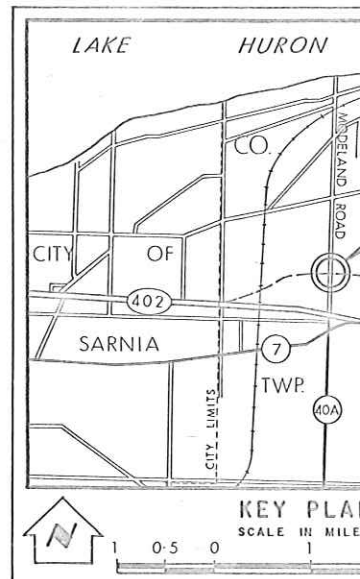
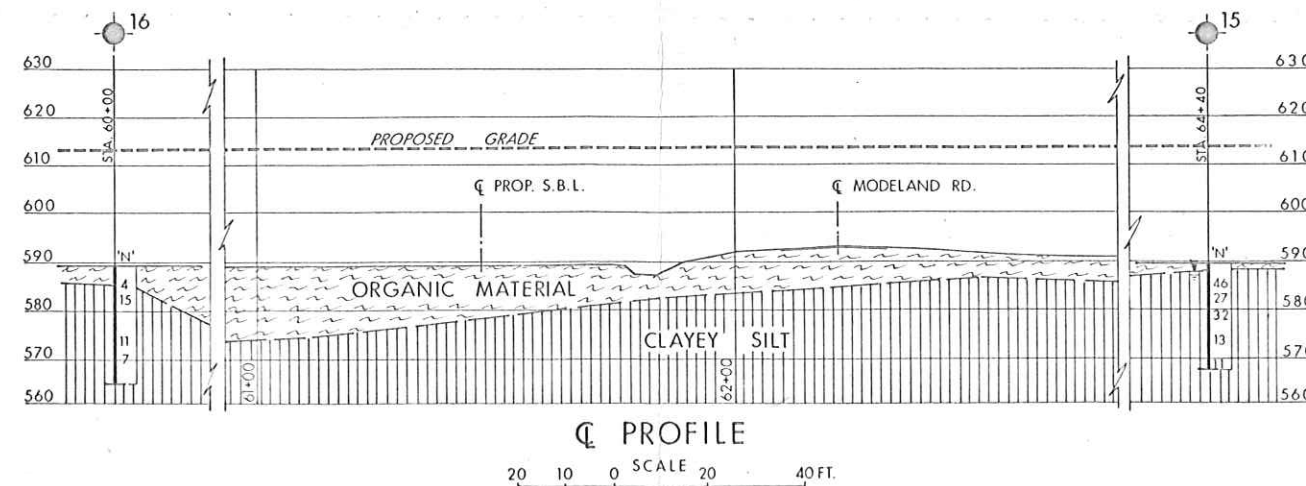
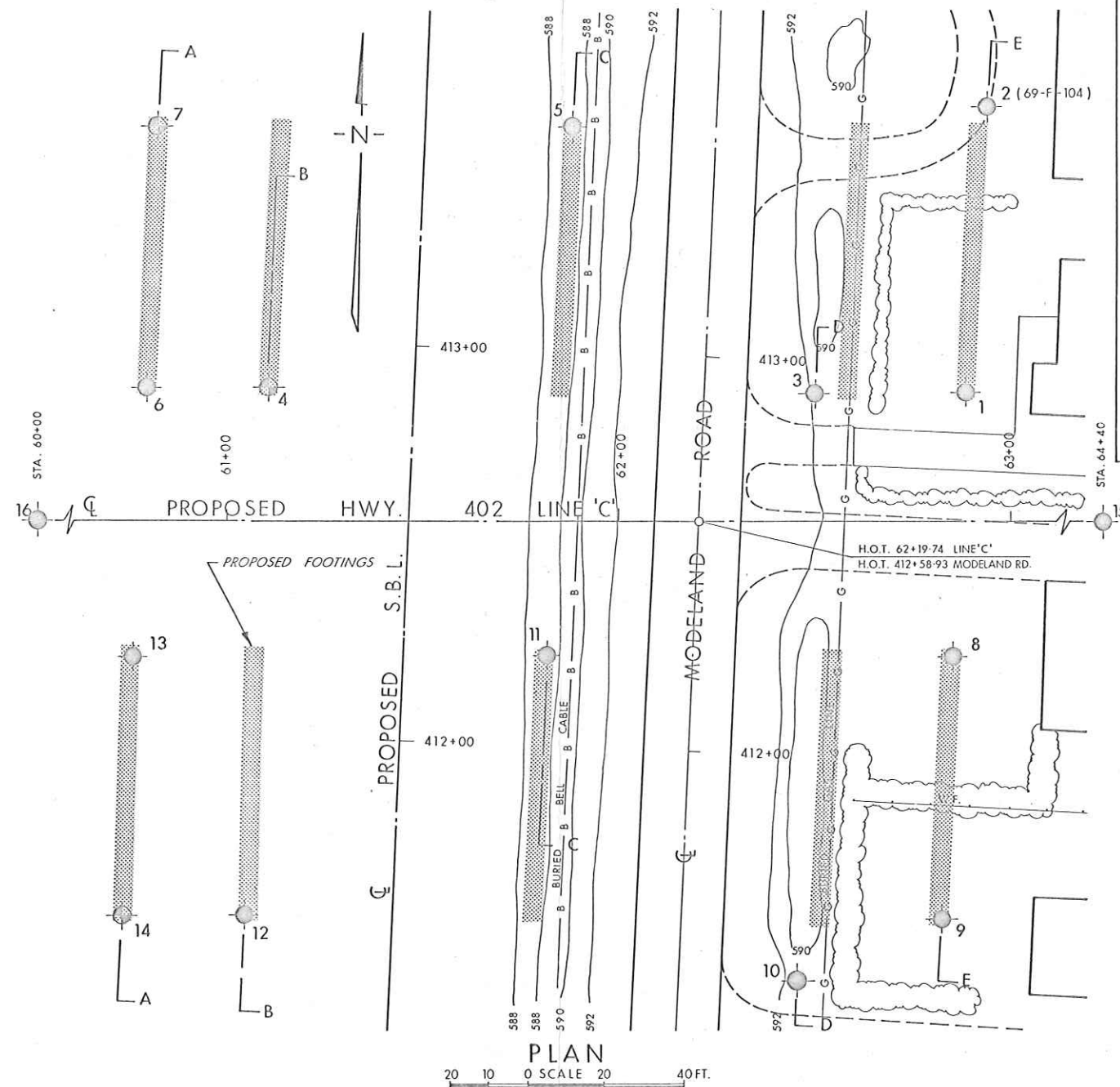


SECTIONS
20 10 0 SCALE 20 40 FT.



| LEGEND | | |
|--------|-------------------------------------------------|--|
| | Bore Hole | |
| | Cone Penetration Test | |
| | Bore & Cone Penetration Test | |
| | Water Levels established by field investigation | |

NOTE - Water Levels in Bore Holes 1 & 16 not established by field investigation.

| NO. | ELEVATION | STATION |
|-----|-----------|---------|
| 1 | 591.3 | 62+ |
| 2 | 590.3 | 62+ |
| 3 | 592.5 | 62+ |
| 4 | 588.6 | 61+ |
| 5 | 587.4 | 61+ |
| 6 | 588.8 | 60+ |
| 7 | 588.6 | 60+ |
| 8 | 590.8 | 62+ |
| 9 | 590.8 | 62+ |
| 10 | 592.1 | 62+ |
| 11 | 587.2 | 61+ |
| 12 | 588.9 | 61+ |
| 13 | 588.7 | 60+ |
| 14 | 589.0 | 60+ |
| 15 | 589.8 | 64+ |
| 16 | 589.5 | 60+ |

NOTE - The boundaries between soil strata have been determined from Bore Hole locations. Between Bore Holes boundaries are determined from geological evidence and may be subject to change.

| REVISIONS | DATE | BY | DESCRIPTION |
|-----------|------|----|-------------|
| | | | |
| | | | |
| | | | |

DEPARTMENT OF HIGHWAYS
MATERIALS & TESTING OFFICE

MODELAND

KING'S HIGHWAY NO. 402 LINE 'C'

CO. LAMBTON

TWP. SARNIA

LOT

BORE HOLE LOCATION

SUBM'D. A.B. CHECKED ☒ W.P. NO. 122-65-0

DRAWN S.O. CHECKED ☒ JOB NO. 70-110

DATE 7 JULY 1970 SITE NO.

APPROVED *A.P. Thomas* PRINCIPAL FOUNDATION ENGINEER

REF. NO. E-4856-1