

APPROVED <i>[Signature]</i>		CONT. NO.	
DATE 7 JULY 1970		SITE NO.	
DRAWN S.O.		JOB NO. 70-11046	
SUBMITTAL 1. B. CHECKED 2. B. CHECKED 3. B. CHECKED		WP NO. 122-65-03&04	
SECTIONS C-C, D-D, E-E & SOIL STRATA			
KING'S HIGHWAY NO. 402 LINE 'C'			
CO. LAMBTON			
TWP. SARINIA			
LOT CON.			
DIST. NO. 1			
MODELAND ROAD			
DEPARTMENT OF HIGHWAYS - ONTARIO			
MATERIALS & TESTING OFFICE - FOUNDATION SECTION			

REVISIONS	DATE	BY	DESCRIPTION

The boundaries between soil strata have been established only at Bore Hole locations. Between Bore Holes the boundaries are assumed from geological evidence and may be subject to considerable error.

NOTE -

NO.	ELEVATION	STATION	OFFSET

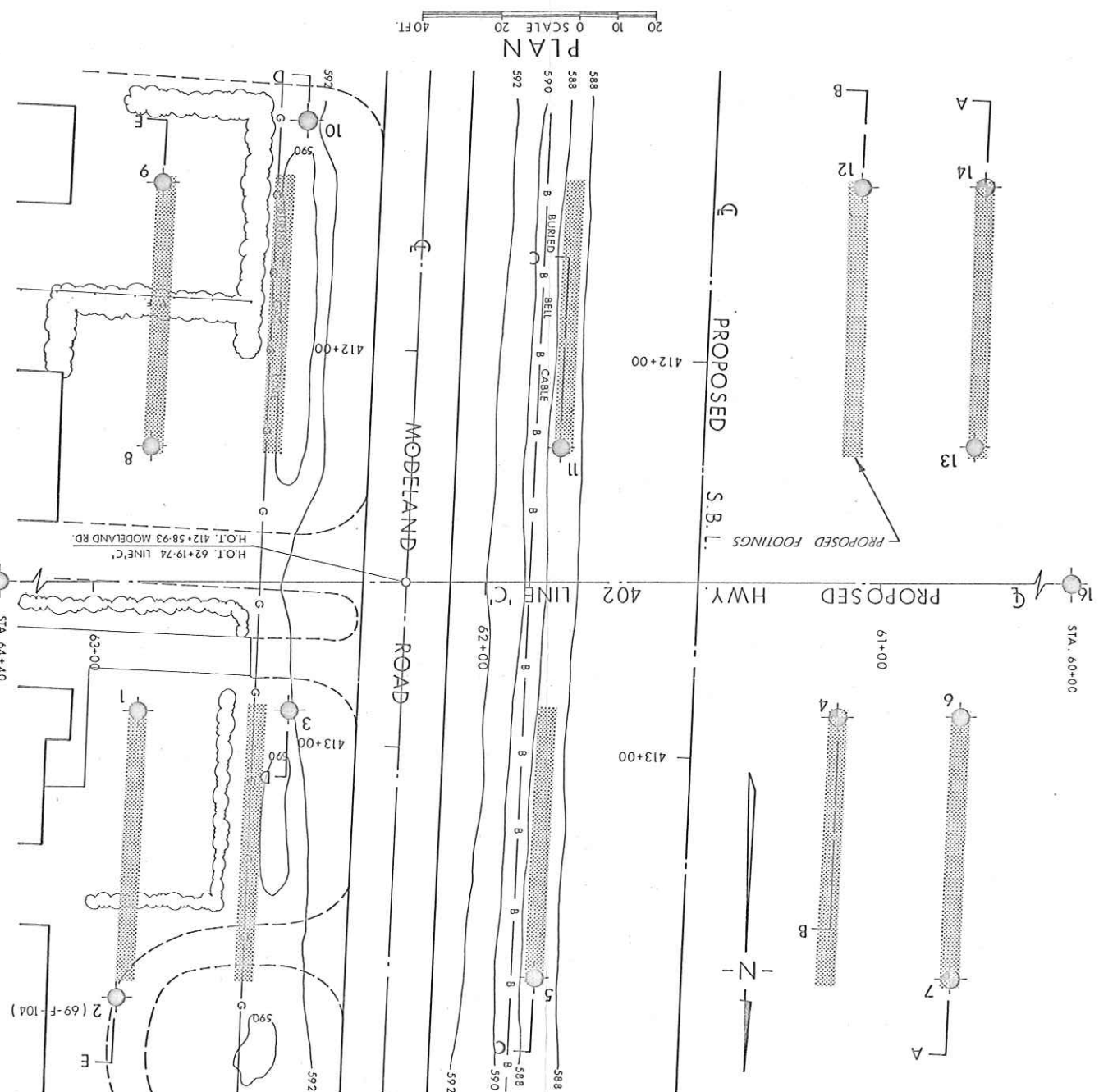
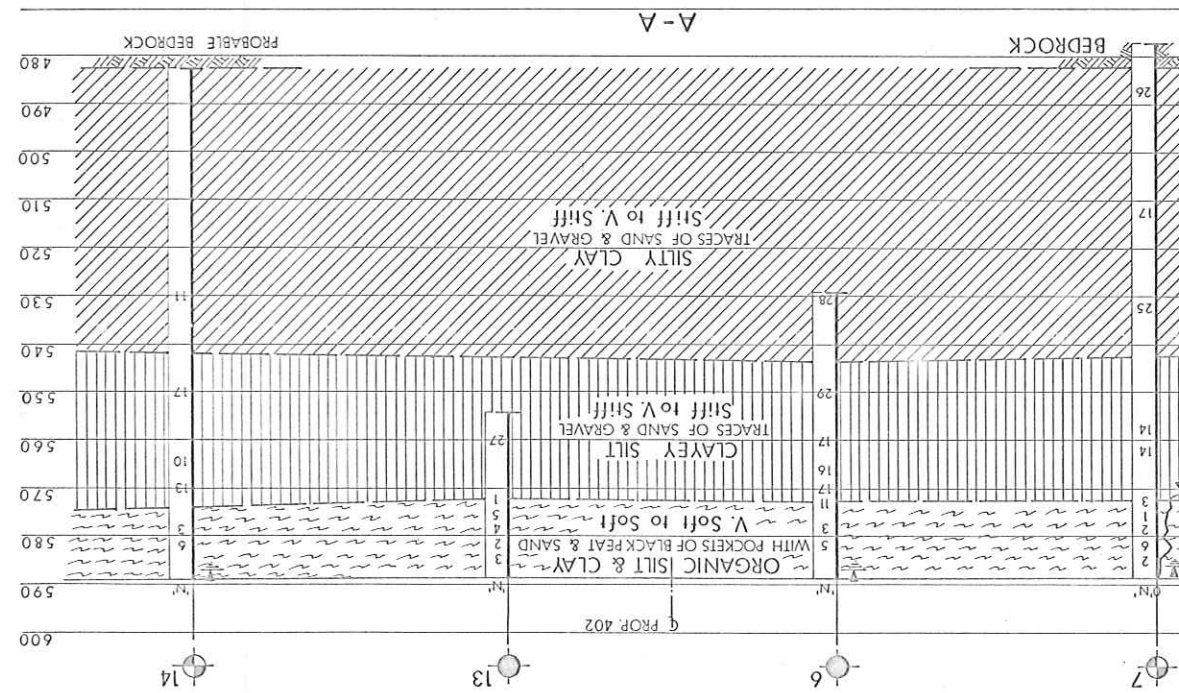
LEGEND

- Bore Hole
- Cone Penetration Hole
- Bore & Cone Penetration Hole
- Water Levels established at time of field investigation.

KEY PLAN

SCALE IN MILES

SEE DRAWING N° 70-11046A



The boundaries between bore holes have been established from geological evidence. Between Bore Holes the boundaries are established from geological evidence.

# NOTE -

1	591.3	62+8.8	33' LT.
2	590.3	62+9.4	105' LT.
3	592.5	62+4.6	33' LT.
4	588.6	61+11	34' LT.
5	587.4	61+8.7	100' LT.
6	588.8	60+8.0	34' LT.
7	588.6	60+8.3	100' LT.
8	590.8	62+8.5	34' RT.
9	590.8	62+8.2	101' RT.
10	592.1	62+4.5	117' RT.
11	587.2	61+8.1	34' RT.
12	588.9	61+0.5	100' RT.
13	588.7	60+7.6	34' RT.
14	589.0	60+7.3	100' RT.
15	589.8	64+4.0	6
16	589.5	60+0.0	6

## NOTE -

Water Levels in Bore Holes 2,8,10,11,12,13 & 16 not established at time of field investigation.

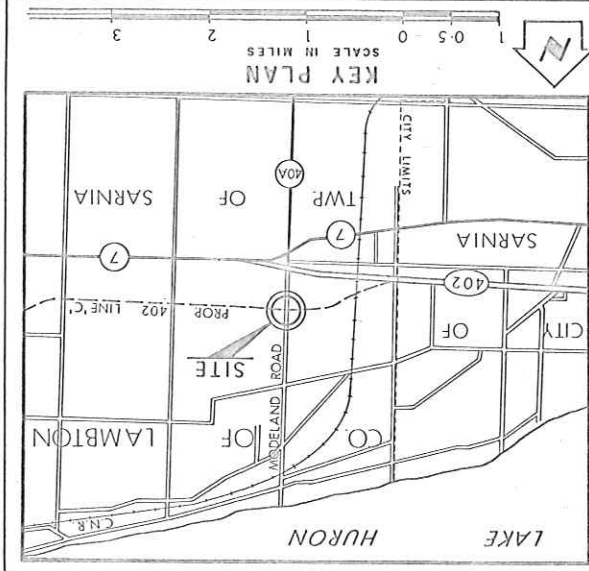
Water Levels established of time of field investigation, JUNE 1970

Bore & Cone Penetration Hole

Cone Penetration Hole

Bore Hole

## LEGEND



DEPARTMENT OF HIGHWAYS - ONTARIO		MATERIALS & TESTING OFFICE - FOUNDATION SECTION	
MODELAND ROAD			
KING'S HIGHWAY NO. 402 LINE 'C'		DIST. NO. 1	
CO. LAMBTON			
TWP. SARINIA		LOT 15 & 16 CON. 7	
BORE HOLE LOCATIONS & SOIL STRATA			
BMD A B	CHECKED	W/P NO.	122-65-03.804
TAWN S O	CHECKED	JOB NO.	70 - 11046
SITE NO		BRIDGE DRAWING NO.	
7 JULY 1970		70 - 11046 A	
APPROVED		M.B.T. DRAWING NO.	
28/8/70		70 - 11046 A	
PROPOSED FOUNDATION DESIGN		JOB NO.	
507		122-65-03.804	

- NOTE -

The boundaries between soil strata have been established only at Bore Hole locations. Between Bore Holes the boundaries are assumed from geological evidence and may be subject to considerable error.