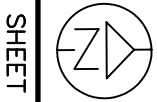


METRIC

DIMENSIONS ARE IN METRES  
AND/OR MILLIMETRES  
UNLESS OTHERWISE SHOWN

HWY 11  
CONT NO  
GWP No759-93-00

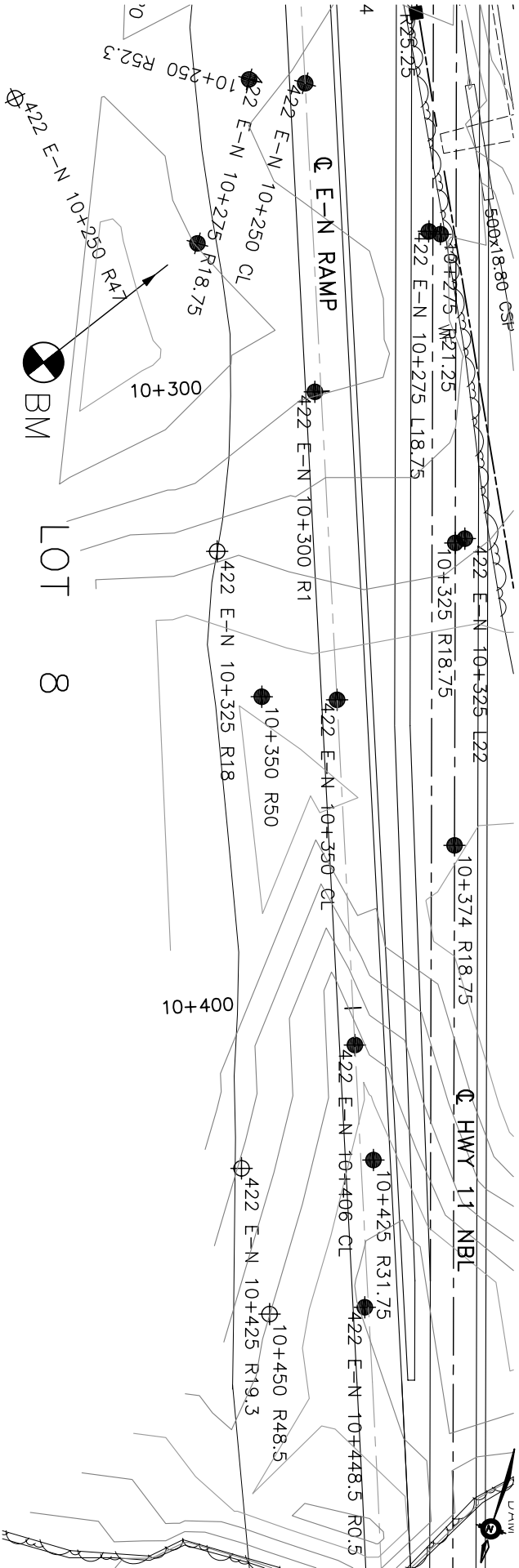
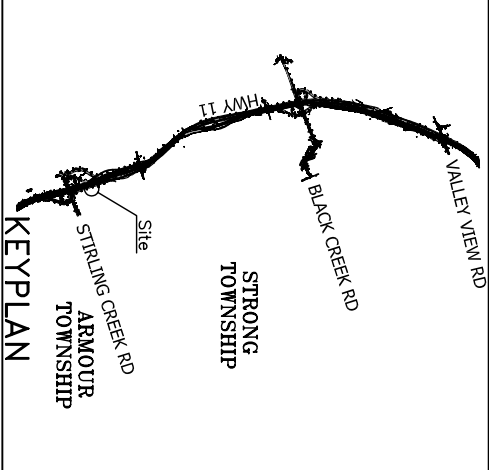
STIRLING CREEK RD INTERCHANGE  
E-N RAMP CENTRELINE  
STATION 10+250 TO 10+450  
BOREHOLE LOCATIONS AND SOIL STRATA



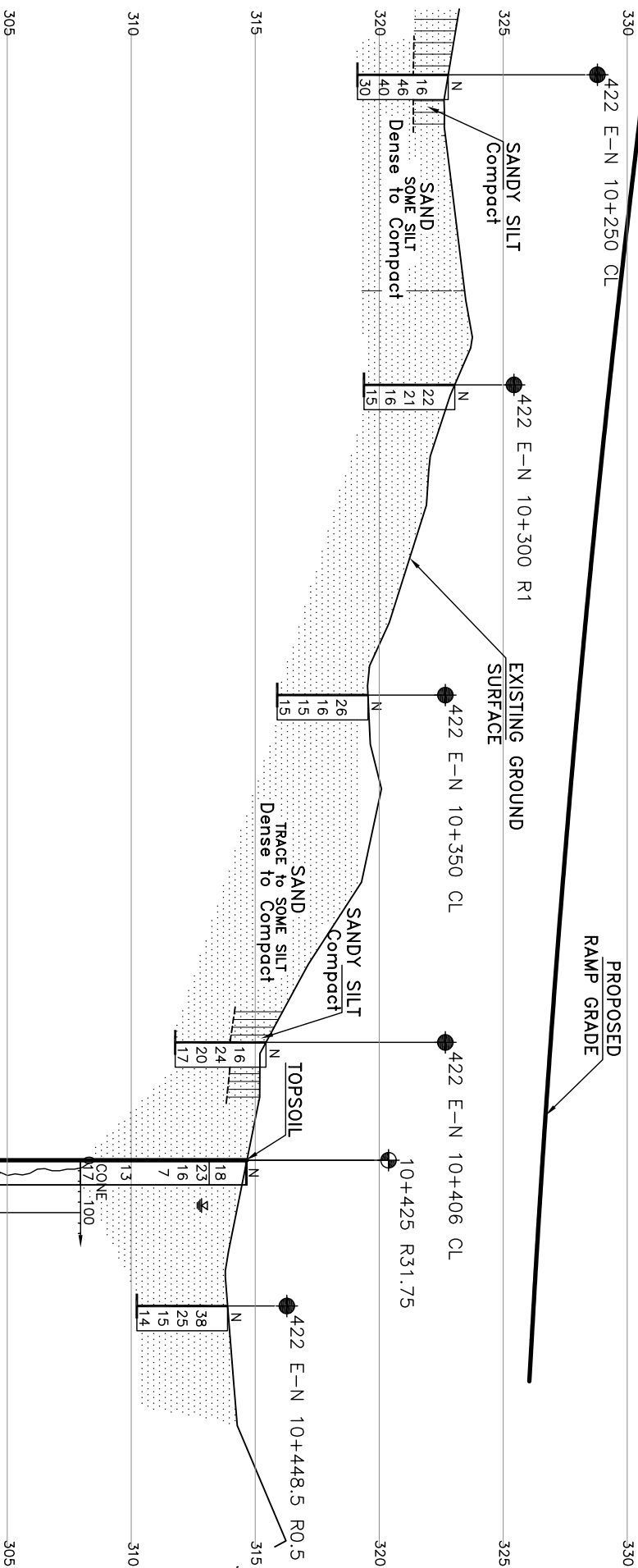
**Marshall**  
**Macklin**  
**Moneghan**

CONSULTING ENGINEERS • SURVEYORS • PLANNERS

THURBER ENGINEERING LTD.  
THURBER



PLAN



PROFILE Q E-N RAMP

HOR: 5 0 10 20m  
VERT: 1.25 0 2.5 5m

L E G E N D			
	Bore Hole		
	Dynamic Cone Penetration Test (cone)		
	Bore Hole & Cone		
	Blows/0.3m (Std pen Test, 475J/blow)		
	Blows/0.3m (60° Cone, 475J/blow)		
	Pressure, Hydraulic		
	WL in Piezometer at Time of Investigation (Date)		
	Head Artesian Water		
	Piezometer		
	WL in Open Borehole Upon Completion of Drilling		
	90% Rock Quality Designation (RQD)		
	Auger Refusal		
	Cone Refusal		
NO	STATION	OFFSET FROM RAMP CL	
422 E-N 10+250 CL	10+250	0	
422 E-N 10+250 R47	10+250	R47	
422 E-N 10+275 L18.75	10+275	L18.75	
422 E-N 10+275 R18.75	10+275	R18.75	
422 E-N 10+300 R1	10+300	R1	
422 E-N 10+325 L22	10+325	L22	
422 E-N 10+325 R18	10+325	R18	
422 E-N 10+350 CL	10+350	0	
422 E-N 10+406 CL	10+406	0	
422 E-N 10+425 R19.3	10+425	R19.3	
422 E-N 10+448.5 R0.5	10+448.5	R0.5	

— NOTE—

The boundaries between soil strata have been established only at Bore Hole locations. Between Bore Holes the boundaries are assumed from geological evidence.

REVISIONS				
NOV-04	SP	ISSUED AS DRAFT FOR REVIEW		
DATE	BY	DESCRIPTION	DATE	NOV-04
DESIGN SKP	CHK SKP	CODE	LOAD	SCHEME
DRAWN IT/WW/CHK PJR	SITE	STRUCT	SCHEME	DWG B6

DRAWING NOT TO BE SCALED  
100 mm ON ORIGINAL DRAWING