

METRIC

DIMENSIONS ARE IN METRES
AND/OR MILLIMETRES
UNLESS OTHERWISE SHOWN



HWY 11

CONT No

GWP No759-93-00

STIRLING CREEK RD INTERCHANGE

E-N RAMP LEFT&RIGHT TOES

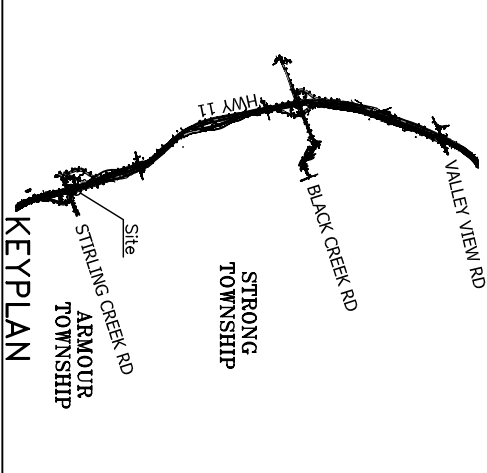
STATION 10+125 TO 10+275

SHEET



CONSULTING ENGINEERS • SURVIVORS • PLANNERS

THURBER ENGINEERING LTD.

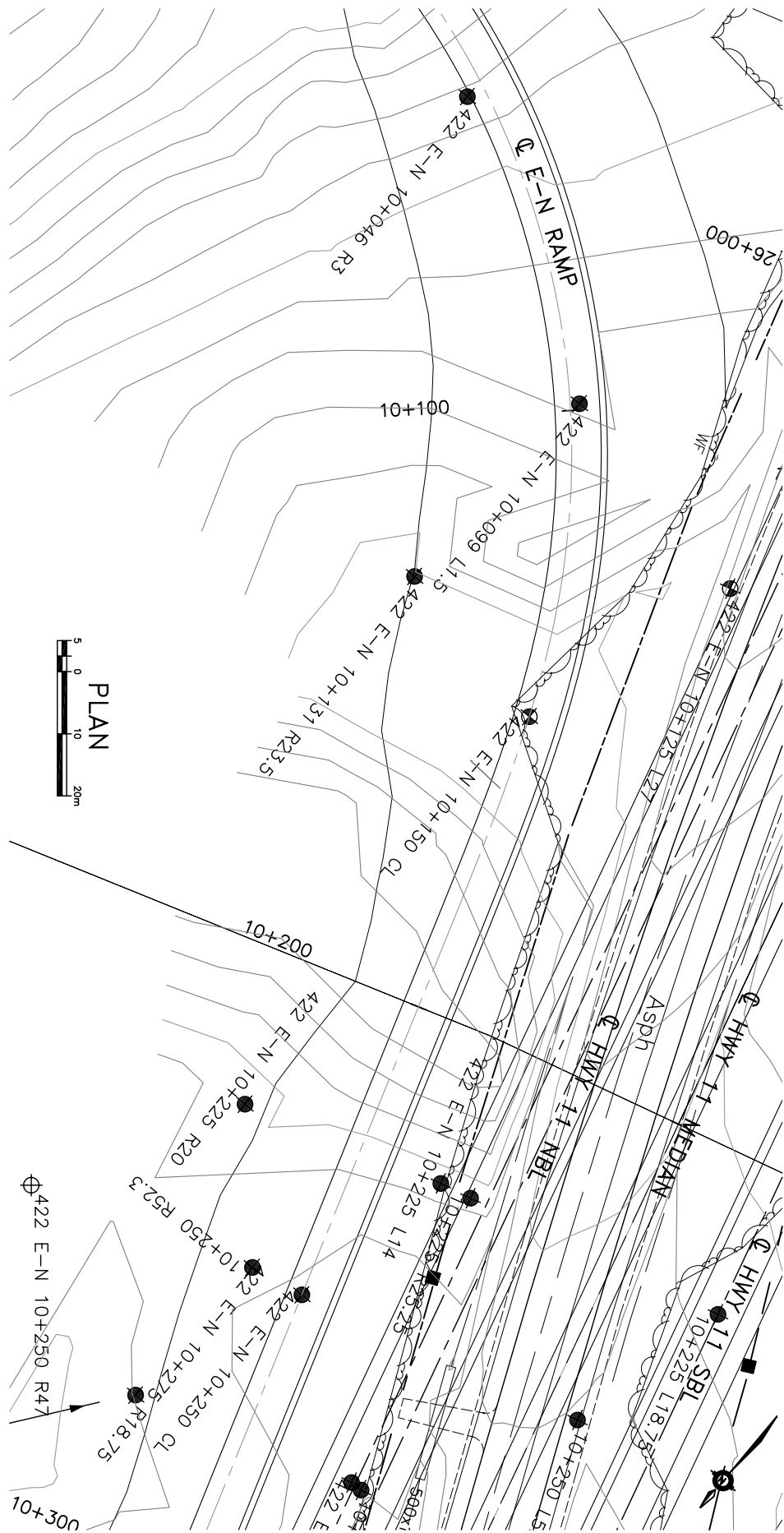


LEGEND

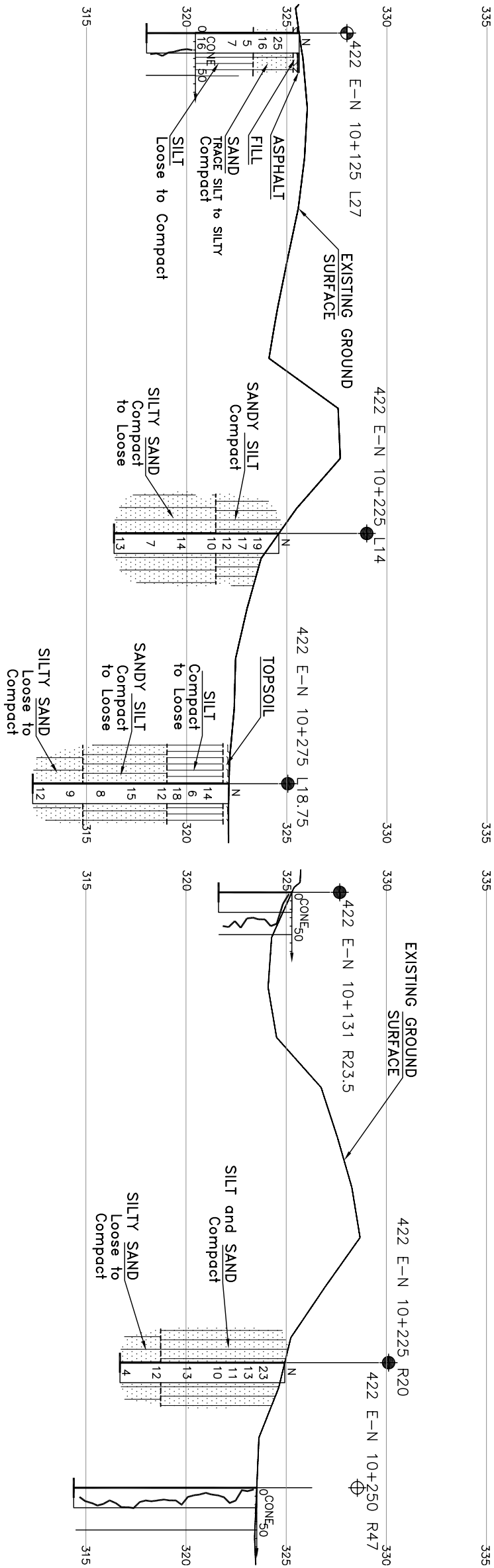
	Bore Hole
	Dynamic Cone Penetration Test (Cone)
	Bore Hole & Cone
	Blows/0.3m (Std pen Test, 475J/blow)
	Blows/0.3m (60° Cone, 475J/blow)
	Pressure, Hydraulic
	WL in Piezometer at Time of Investigation (Date)
	Head Artesian Water
	Piezometer
	WL in Open Borehole Upon Completion of Drilling
	90% Rock Quality Designation (RQD)
	Auger Refusal
	C/R
	NO
	STATION
	OFFSET FROM MEDIAN CL
	422 E-N 10+046 R3
	422 E-N 10+099 L1.5
	422 E-N 10+125 L27
	422 E-N 10+131 R23.5
	422 E-N 10+150 CL
	422 E-N 10+225 L14
	422 E-N 10+225 R20
	422 E-N 10+250 CL
	422 E-N 10+250 R47
	422 E-N 10+275 L18.75
	422 E-N 10+275 R18.75

NOTE

The boundaries between soil strata have been established only at Bore Hole locations. Between Bore Holes the boundaries are assumed from geological evidence.



PLAN



PROFILE OF E-N RAMP LEFT TOE

PROFILE OF E-N RAMP RIGHT TOE



DRAWING NOT TO BE SCALED

100 mm ON ORIGINAL DRAWING

REVISIONS				
NOV-04	SP	ISSUED AS DRAFT FOR REVIEW		
DATE	BY	DESCRIPTION		
DESIGN SKP	CHK SKP	CODE	LOAD	DATE
DRAWN IT/WW/CHK PJR	SITE	STRUCT	SCHEME	DWG BS