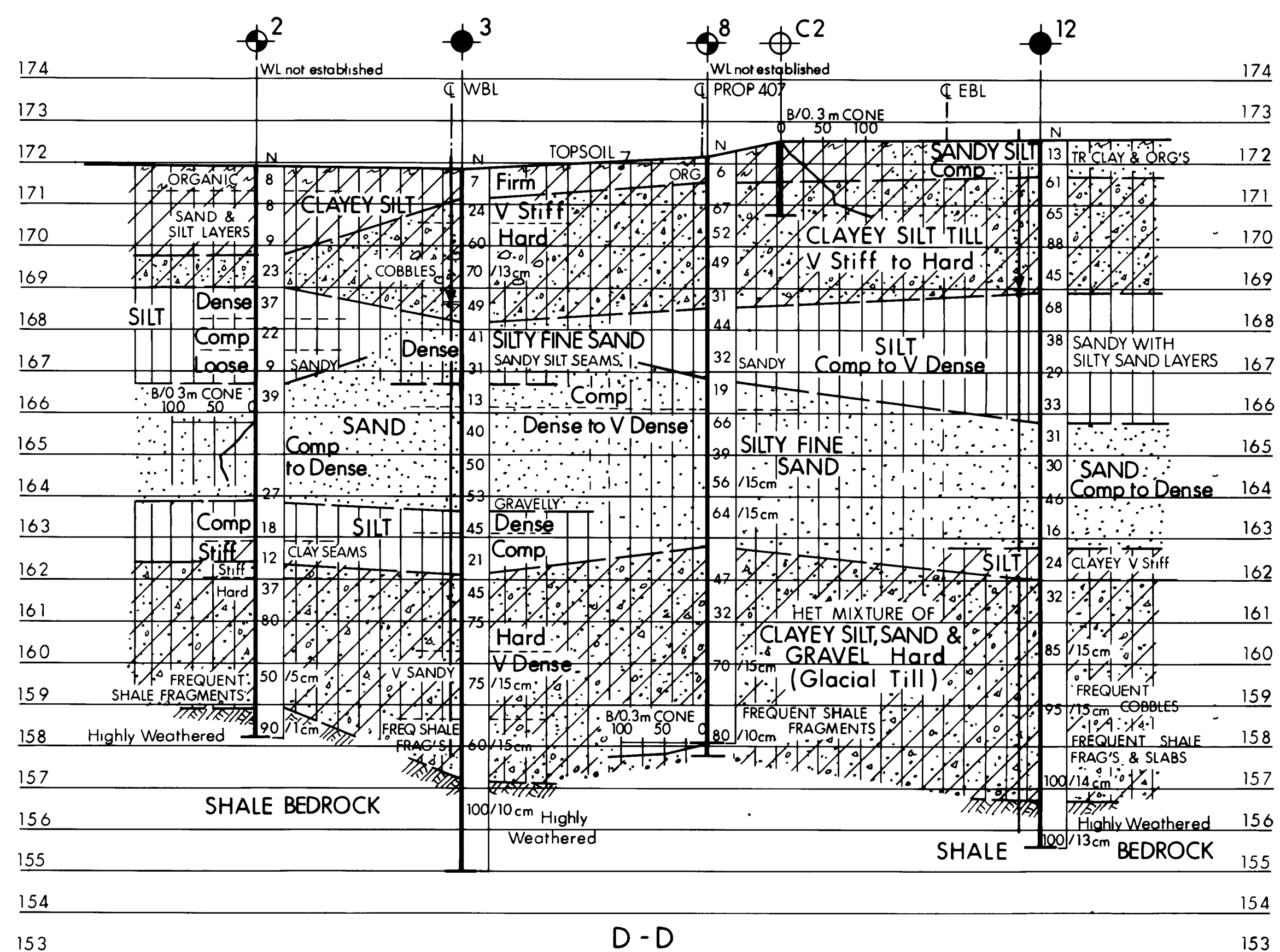
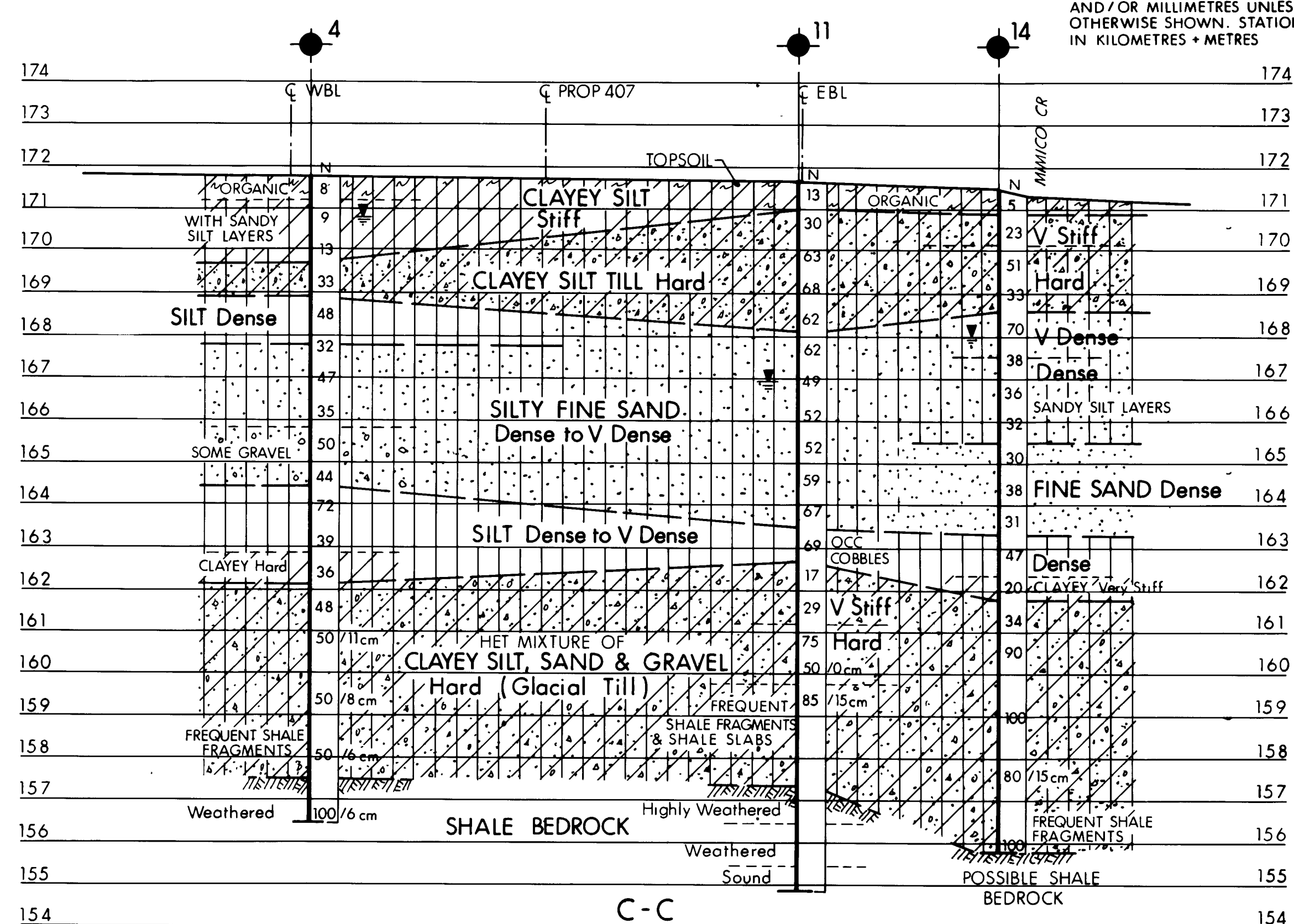
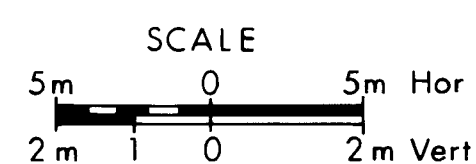


## SECTIONS



D - D

*METRIC*

DIMENSIONS ARE IN METRES  
AND/OR MILLIMETRES UNLESS  
OTHERWISE SHOWN. STATIONS  
IN KILOMETRES + METRES

CONT No  
W P No 367-87-08/09

MIMICO CREEK

SHEET






BORE HOLE LOCATIONS &amp; SOIL STRATA

**DOMINION SOIL INVESTIGATION INC.**

SEE DWG NO 2

KEY PLAN  
SCALE

### LEGEND

- |   |                                       |
|---|---------------------------------------|
|    | Bore Hole                             |
|    | Dynamic Cone Penetration Test (Cone)  |
|    | Bore Hole & Cone                      |
| N   | Blows/0.3m (Std Pen Test, 475 J/blow) |
| CONE  | Blows/0.3m (60° Cone, 475 J/blow)     |
|  | WL at time of investigation 90 09     |
|  | WL in standpipe                       |

No	ELEVATION		
1	171.5		
2	171.9		
3	171.8		
4	171.8		
5	172.0		
6	172.0		
7	171.8		
8	172.1		
9	171.7		
10	171.8		
11	171.7		
12	172.5		
13	171.8		
14	171.5		
15	171.9		
16	172.0		
17	172.0		
18	173.2		
C1	172.0		
C2	172.5		
C3	171.8		

≡NOTE≡

The boundaries between soil strata have been established only at Bore Hole locations. Between Bore Holes the boundaries are assumed from geological evidence.

NOTE: The complete foundation investigation and design report for this project and other related documents may be examined at the Engineering Materials Office, Downsview. Information contained in this report and related documents is specifically excluded in accordance with the conditions of Section 102-2 of Form 100.

REV				
	DATE	BY	DESCRIPTION	
Geocres No 30M12-211				
HWY No 407			DIST 6	
SUBM'D	ZO	CHECKED	DATE 1990 12 04	SITE 24-658
DRAWN	CS	CHECKED	APPROVED	DWG 2A