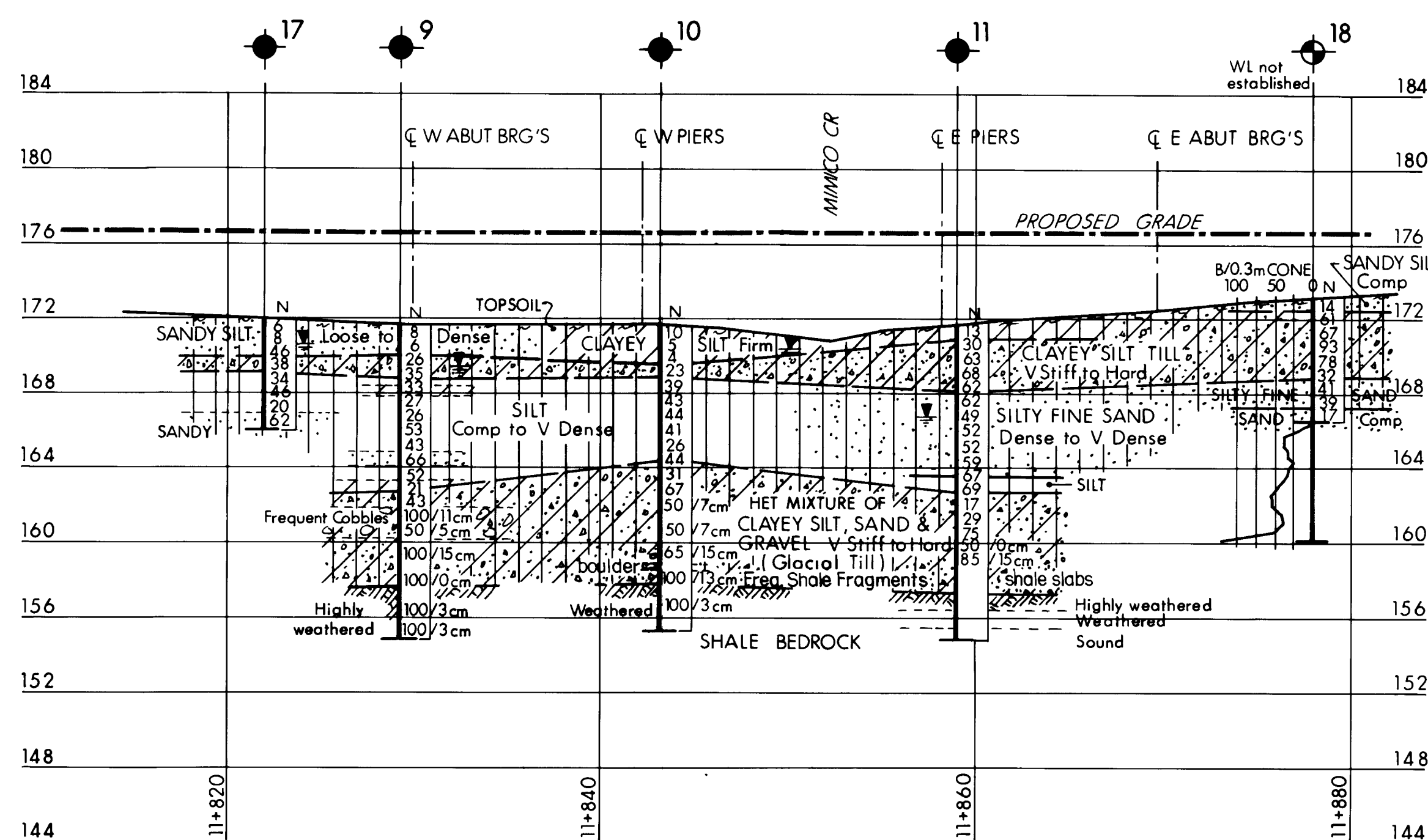



Q PROFILE WBL



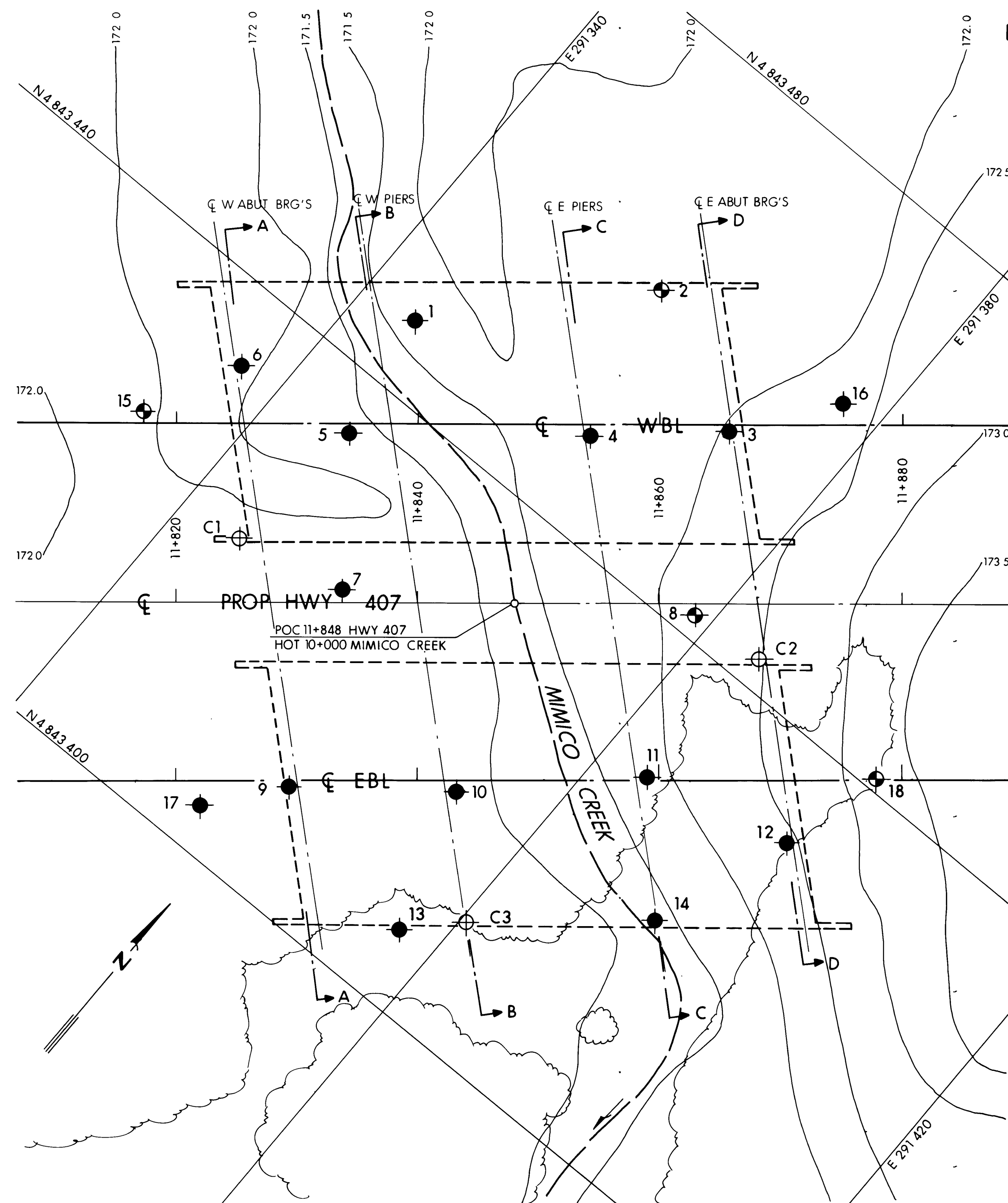
Q PROFILE EBL

SCALE

5m 0 5m



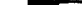
NOTE: SEE DWG NO 2A  
FOR SECTIONS A-A, B-B, C-C & D-D



## PLAN

SCALE

5 m 0 5 m

A horizontal scale bar with a central point labeled '0'. To the left of '0' is a point labeled '5 m', and to the right is another point labeled '5 m'. The bar is divided into segments by tick marks.

*METRIC*

DIMENSIONS ARE IN METRES  
AND/OR MILLIMETRES UNLESS  
OTHERWISE SHOWN. STATIONS  
IN KILOMETRES + METRES.

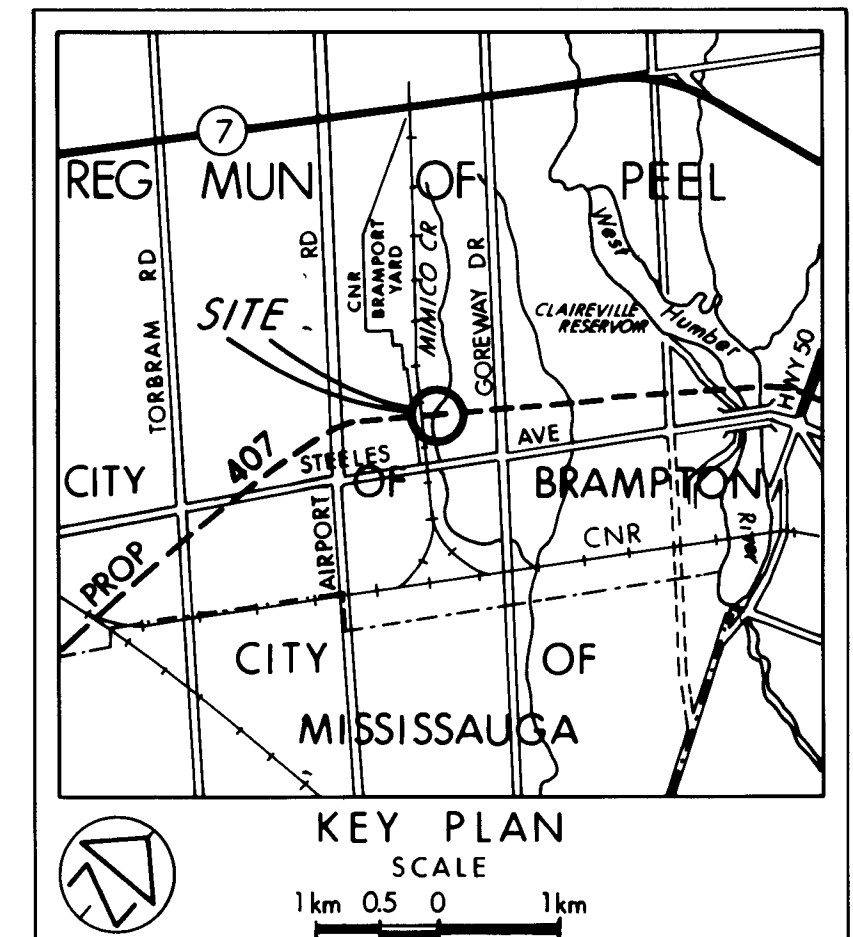
CONT No  
WP No 367-87-08/09

MIMICO CREEK






BORE HOLE LOCATIONS &amp; SOIL STRATA

SHEET

**DOMINION SOIL INVESTIGATION INC.**



## LEGEND

- |   |                                       |
|---|---------------------------------------|
|    | Bore Hole                             |
|    | Dynamic Cone Penetration Test (Cone)  |
|    | Bore Hole & Cone                      |
| N   | Blows/0.3m (Std Pen Test, 475 J/blow) |
| CONE  | Blows/0.3m (60° Cone, 475 J/blow)     |
|  | WL at time of investigation 90 09     |
|  | WL in standpipe                       |

No	ELEVATION	CO-ORDINATES	
		NORTH	EAST
1	171.5	4843 446.0	291 345.0
2	171.9	4843 461.2	291 358.8
3	171.8	4843 455.2	291 370.8
4	171.8	4843 447.8	291 362.1
5	172.0	4843 435.4	291 347.0
6	172.0	4843 433.8	291 336.5
7	171.8	4843 425.1	291 354.8
8	172.1	4843 441.8	291 378.7
9	171.7	4843 409.7	291 362.4
10	171.8	4843 418.0	291 373.1
11	171.7	4843 429.2	291 384.4
12	172.5	4843 432.1	291 396.7
13	171.8	4843 406.1	291 376.7
14	171.5	4843 420.4	291 392.5
15	171.9	4843 425.5	291 332.4
16	172.0	4843 463.4	291 376.4
17	172.9	4843 403.6	291 357.5
18	173.2	4843 441.0	291 399.0
C1	172.0	4843 422.9	291 345.5
C2	172.5	4843 442.3	291 384.9
C3	171.8	4843 410.2	291 380.4

---

=NOTE=

The boundaries between soil strata have been established only at Bore Hole Locations. Between Bore Holes the boundaries are assumed from geological evidence.

NOTE: The complete foundation investigation and design report for this project and other related documents may be examined at the Engineering Materials Office, Downsview. Information contained in this report and related documents is specifically excluded in accordance with the conditions of Section 102-2 of Form 100.

RES.			
DATE	BY	DESCRIPTION	

Geocres No 30M12-211

HWY No	407		DIST	6
SUBM'D	CO	CHECKED	DATE 1990 11 28	SITE 24 - 658
DRAWN	CS	CHECKED	APPROVED	DWG 2