

METRIC

DIMENSIONS ARE IN METRES
AND/OR MILLIMETRES
UNLESS OTHERWISE SHOWN

DISTRICT No. 9
CONT No 92-60
WP No 177-89-08



SOUTH NATION RIVER
BRIDGE 48 (S.B.L.)
HWY. 416
GENERAL ARRANGEMENT

SHEET
340

totten sims hubicki associates
ENGINEERS ARCHITECTS AND PLANNERS

GENERAL NOTES

CLASS OF CONCRETE

- ALL CONCRETE
UNLESS NOTED OTHERWISE

30MPa

CLEAR COVER TO REINFORCING STEEL

- FOOTINGS 100 ±25mm
- ABUTMENTS, WINGWALLS
FRONT FACE 80 ±20mm
BACK FACE 70 ±20mm
- PIER 80 ±20mm
- DECK TOP 70 ±20mm
BOTTOM 40 ±10mm
- APPROACH SLABS 80 ±20mm
- REMAINDER (UNLESS OTHERWISE NOTED) 70 ±20mm

REINFORCING STEEL

- REINFORCING STEEL SHALL BE GRADE 400 UNLESS NOTED
OTHERWISE. BAR MARKS WITH SUFFIX "C" DENOTE COATED BARS.

CONSTRUCTION NOTES

- IF THE ACTUAL BEARING THICKNESSES ARE DIFFERENT FROM
THOSE GIVEN IN THE BEARING DESIGN DATA, THE CONTRACTOR
SHALL ADJUST THE BEARING SEAT ELEVATIONS AND THE
REINFORCING STEEL TO SUIT.

LIST OF DRAWINGS

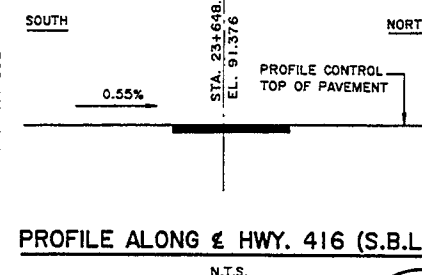
- GENERAL ARRANGEMENT
- BOREHOLE DATA & SOIL STRATA
- FOOTINGS
- FOOTING REINFORCING
- SOUTH ABUTMENT
- NORTH ABUTMENT
- WINGWALLS
- SOUTH PIER
- NORTH PIER
- PRESTRESSED GIRDERS & BEARINGS
- DECK DETAILS
- DECK REINFORCING
- BARRIER WALLS
- 6000mm APPROACH SLAB
- JOINT ANCHORAGE AND ARMOURING
- PILE DRIVING STEAM & DIESEL HAMMERS
- STANDARDS I
- STANDARDS II
- AS CONSTRUCTED ELEV. & DIM.
- ELECTRICAL EMBEDDED WORK
- QUANTITIES STRUCTURE I
- QUANTITIES STRUCTURE II

APPLICABLE STANDARD DRAWINGS

DD-3503 MINIMUM GRANULAR BACKFILL REQUIREMENTS

CURVE DATA

$\Delta = 3^\circ 58' 43.5''$
 $R = 3000$
 $T = 104.242$
 $L = 208.400$
 $E = 1.811$



PROFILE ALONG & HWY. 416 (S.B.L.)

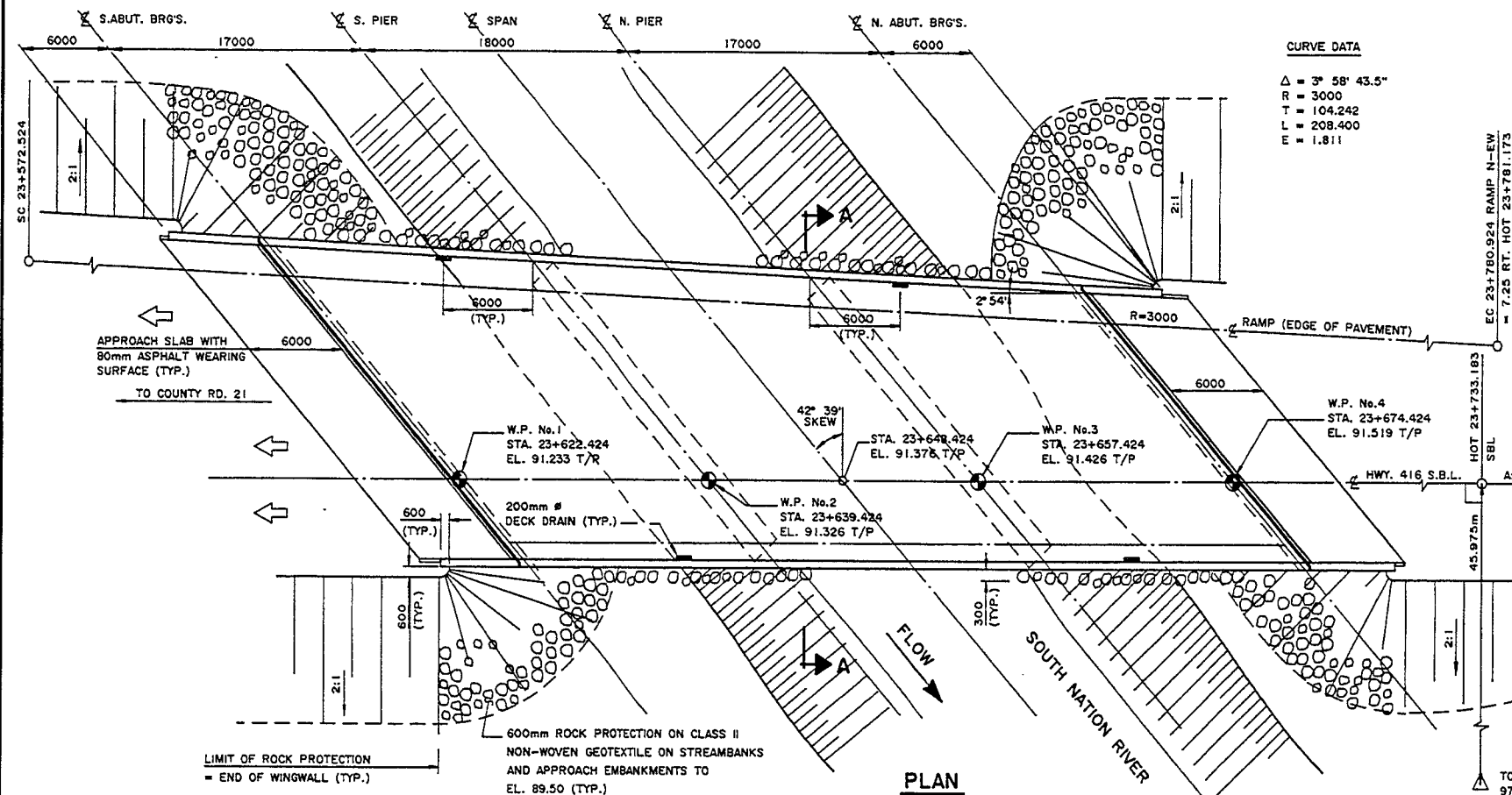


TOPO
9744223
N 4 968 121.444
E 380 771.994

NOTES:

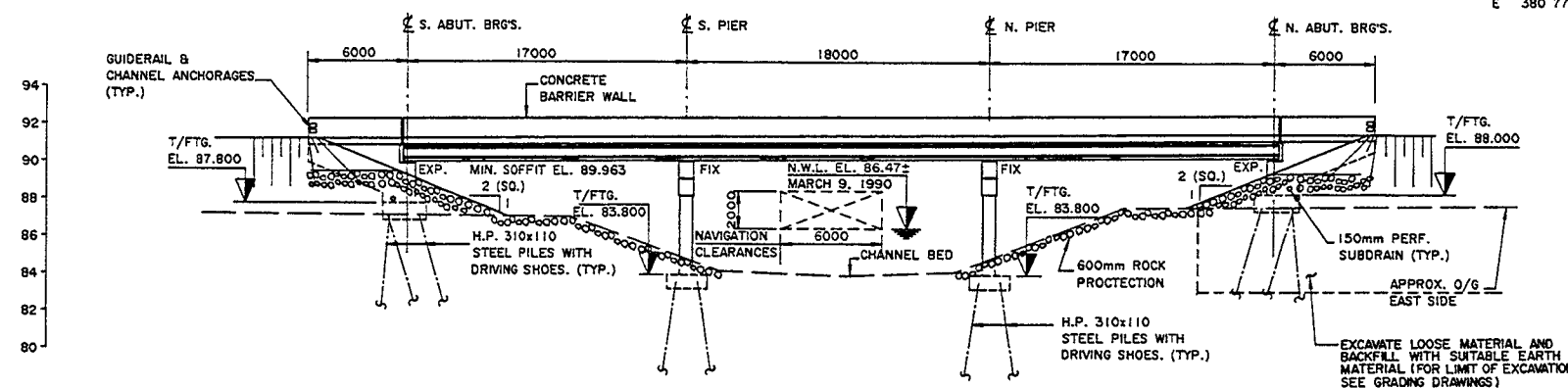
- * DIMENSIONS VARY FROM
5723mm AT N. ABUT. TO
8313mm AT S. ABUT.
- W.P. DENOTES WORKING POINT
- T/P DENOTES ELEVATIONS
GIVEN TO TOP OF PAVEMENT
- O/G DENOTES ORIGINAL
GROUND

DRAWING NOT TO BE SCALED
100 mm ON ORIGINAL DRAWING



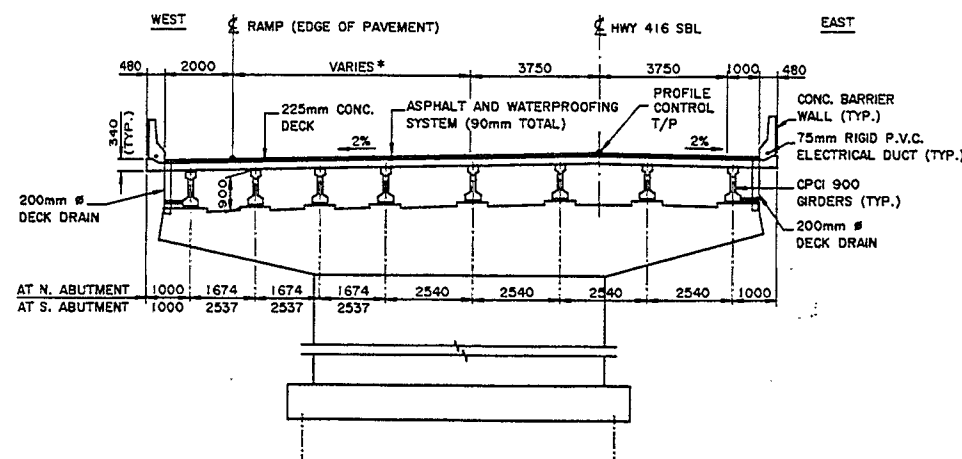
PLAN

SCALE 1:200



ELEVATION

SCALE 1:200



SECTION A-A

SCALE 1:100

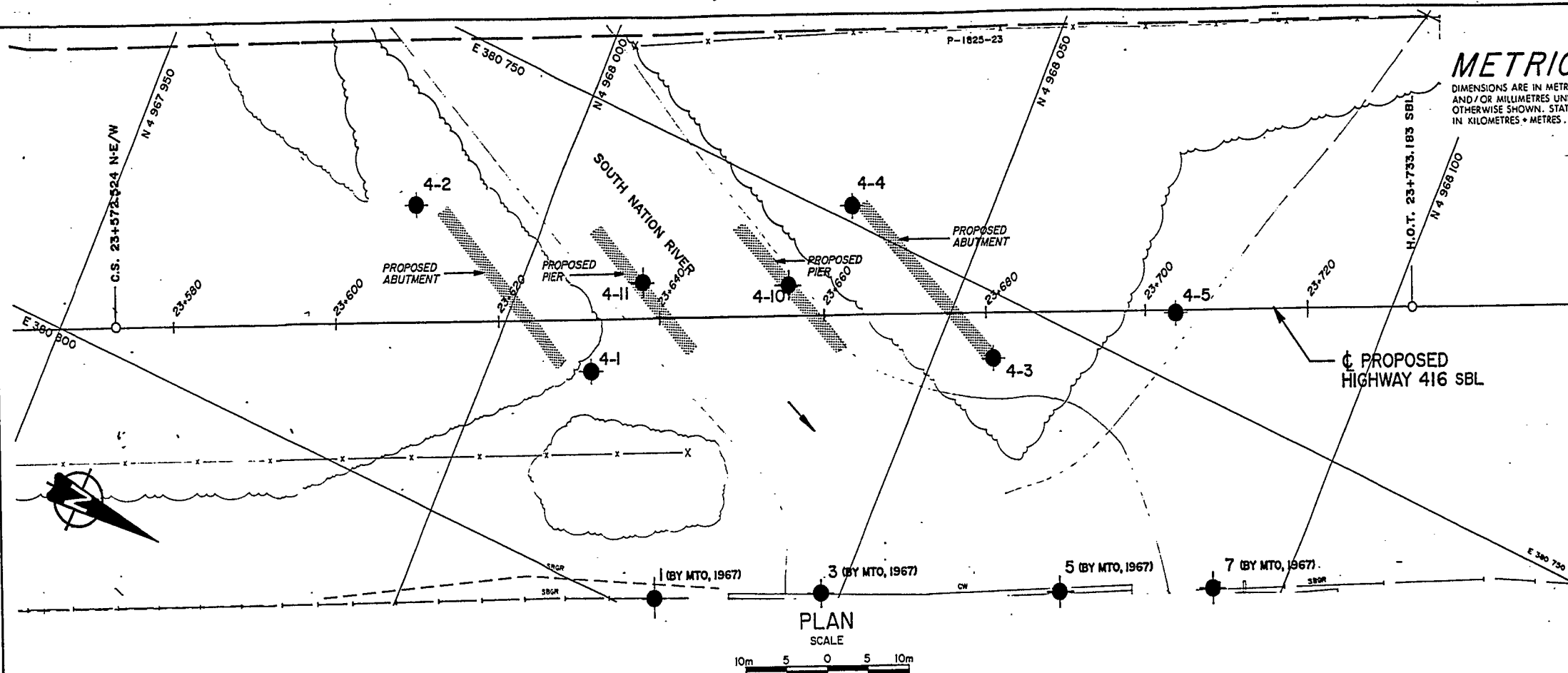
NOTE:
* DIMENSIONS SHOWN NORMAL TO & HWY. 416

B.M. 87.654

N. & W. IN ROOT OF 1.2 BASSWOOD
37.8 L.T. STA. 23+580.0

REVISIONS	DATE	BY	DESCRIPTION
DESIGN W.L.	CHK.S.W.L.	CODE	OHBC 83 LOAD CLASS 'A' DATE JAN., 91
DRAWN C.D.T.	CHK.G.L.A.	SITE 16-189	STRUCT SCHEME IDWG 1

6783130

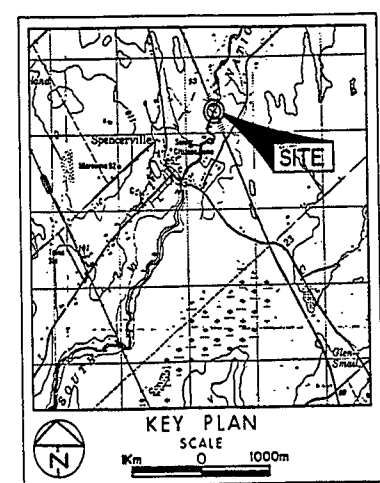


METRIC
DIMENSIONS ARE IN METRES
AND/OR MILLIMETRES UNLESS
OTHERWISE SHOWN. STATIONS
IN KILOMETRES + METRES.

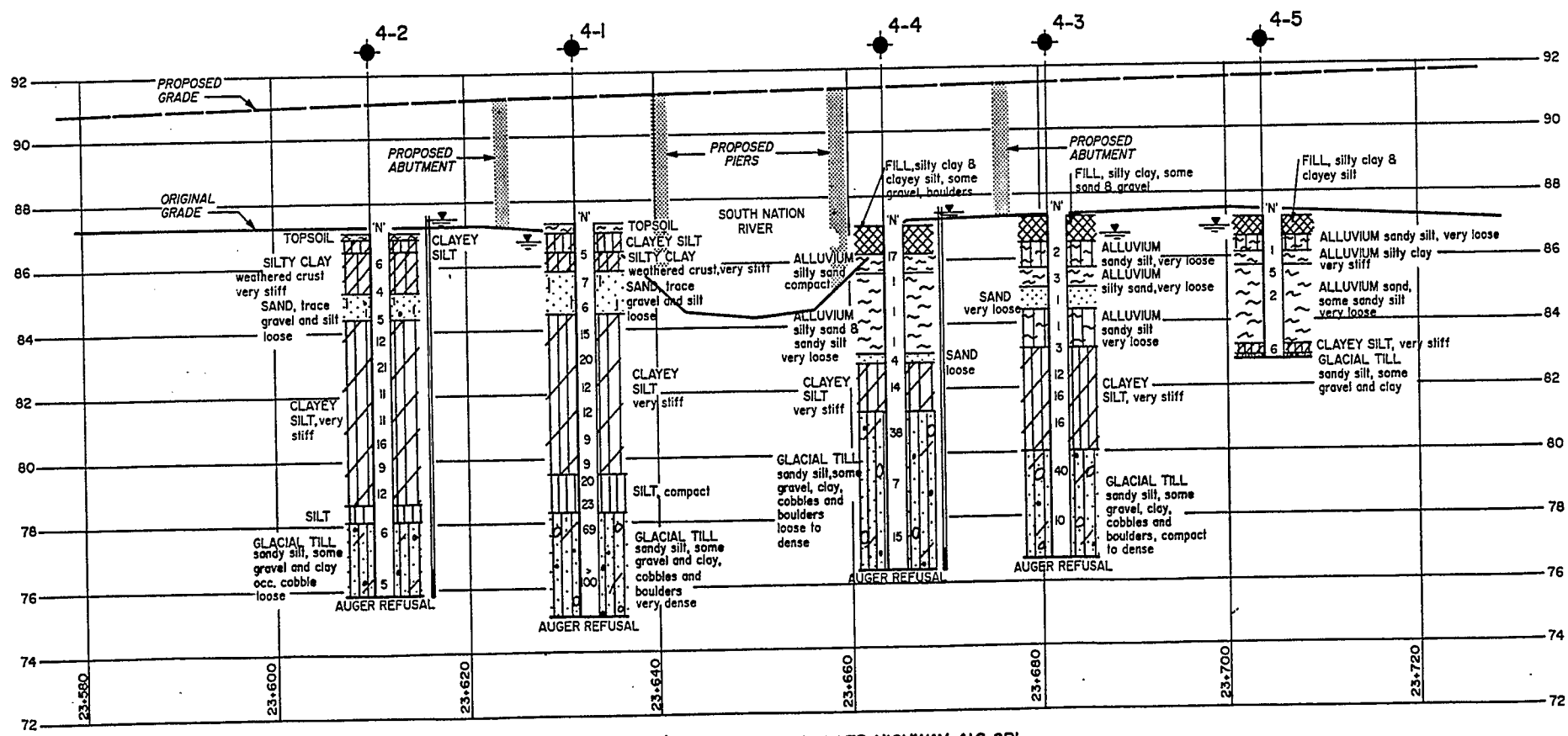
CONT No 92-60
WP No 177-89-02
SOUTH NATION RIVER OVERPASS
HWY 416 SOUTH BOUND LANES
BORE HOLE LOCATIONS & SOIL STRATA

SHEET 341

Golder Associates Ltd.



- LEGEND**
- Bore Hole
 - ⊕ Dynamic Cone Penetration Test (Cone)
 - ⊗ Bore Hole & Cone
 - N Blows/0.3m (Std Pen Test, 475 J/blow)
 - CONE Blows/0.3m (60° Cone, 475 J/blow)
 - W.L. at time of investigation (MAY & JULY 1990)
 - Standpipe



No	ELEVATION	STATION	OFFSET
4-1	87.3	23+631.2	5.7m Rt
4-2	87.1	23+610.1	12.4m Lt
4-3	87.3	23+680.8	5.1m Rt
4-4	87.1	23+663.7	12.0m Lt
4-5	87.2	23+703.6	0.3m Rt
4-10	86.3	23+656	3.5m Lt
4-11	86.3	23+638	4.0m Lt

NOTE
The boundaries between soil strata have been established only at Bore Hole locations. Between Bore Holes the boundaries are assumed from geological evidence.

NOTE: The complete foundation investigation and design report for this project and other related documents may be examined at the Engineering Materials Office, Downsview. Information contained in this report and related documents is specifically excluded in accordance with the conditions of Section 102-2 of Form 100.

REV.	DATE	BY	DESCRIPTION
1			

Geocres No 318-63

HWY No 416 SBL	DIST 9
SUBM'D AC [CHECKED] AC DATE 90/08/21	SITE 16-189A
DRAWN JC [CHECKED] APPROVED	DWG 1778902-A