

METRIC
DIMENSIONS ARE IN METRES AND/OR MILLIMETRES UNLESS OTHERWISE SHOWN

DISTRICT No. 9
CONT No 92-60
WP No 482-90-01

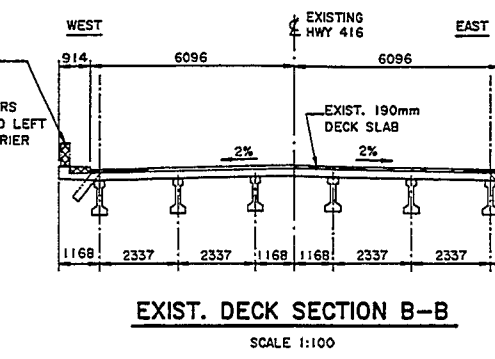
SOUTH NATION RIVER BRIDGE 4A (N.B.L.) HWY. 416
GENERAL ARRANGEMENT

SHEET 315

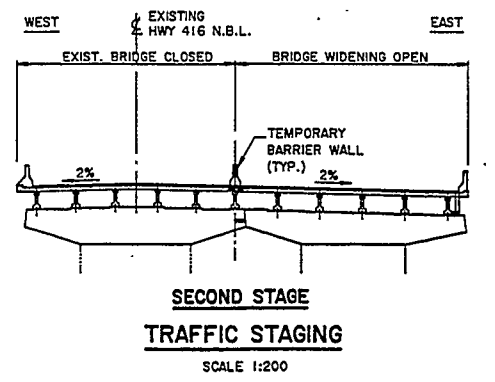
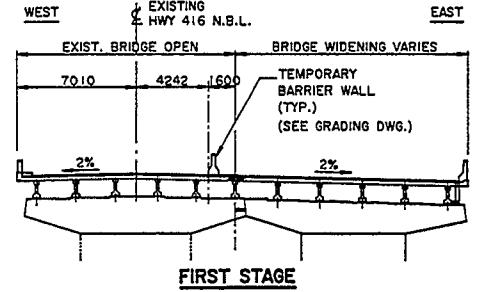
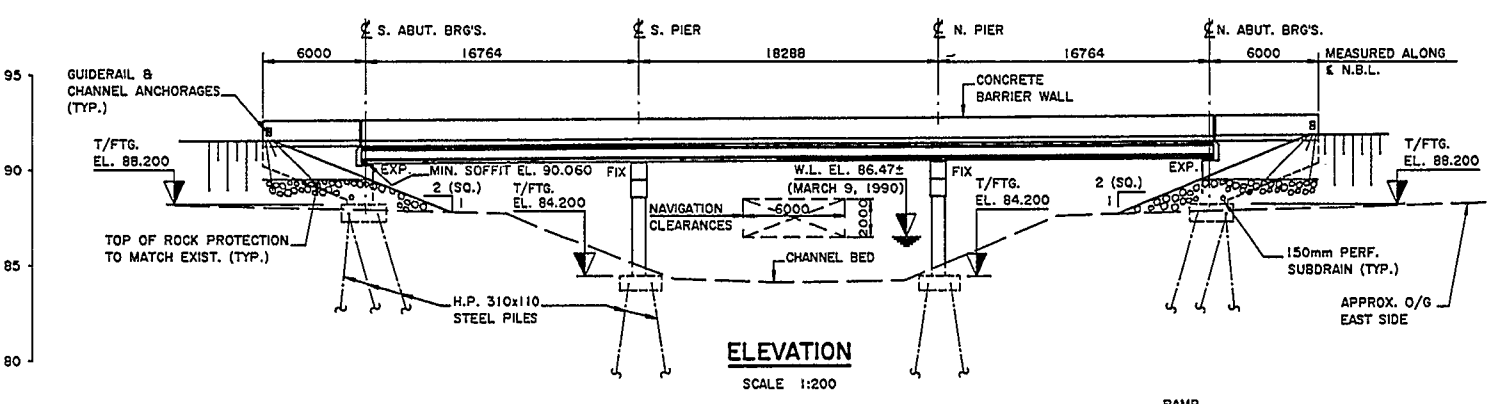
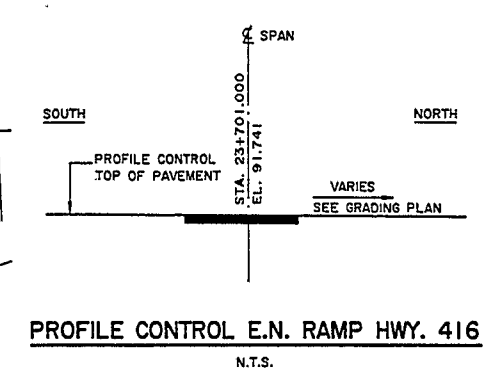
totten sims hubicki associates
ENGINEERS ARCHITECTS AND PLANNERS

PROFESSIONAL ENGINEER
CIVIL
W. L. LIN
PROVINCE OF ONTARIO

PROFESSIONAL ENGINEER
CIVIL
G. L. ALEONG
PROVINCE OF ONTARIO



- GENERAL NOTES**
- CLASS OF CONCRETE**
- ALL CONCRETE UNLESS OTHERWISE NOTED 30MPa
- CLEAR COVER TO REINFORCING STEEL**
- | ITEM | CLEAR COVER (mm) |
|------------------------------------|------------------|
| FOOTINGS | 100 ±25mm |
| ABUTMENTS, WINGWALLS | |
| FRONT FACE | 80 ±20mm |
| BACK FACE | 70 ±20mm |
| PIER | 80 ±20mm |
| DECK | |
| TOP | 70 ±20mm |
| BOTTOM | 40 ±10mm |
| APPROACH SLABS | 80 ±20mm |
| REMAINDER (UNLESS OTHERWISE NOTED) | 70 ±20mm |
- REINFORCING STEEL**
- REINFORCING STEEL SHALL BE GRADE 400 UNLESS NOTED OTHERWISE. BAR MARKS WITH SUFFIX "C" DENOTE COATED BARS.
- CONSTRUCTION NOTES**
- IF THE ACTUAL BEARING THICKNESSES ARE DIFFERENT FROM THOSE GIVEN IN THE BEARING DESIGN DATA, THE CONTRACTOR SHALL ADJUST THE BEARING SEAT ELEVATIONS AND THE REINFORCING STEEL TO SUIT.
- LIST OF DRAWINGS**
- GENERAL ARRANGEMENT
 - BOREHOLE DATA & SOIL STRATA
 - FOOTING LAYOUT
 - FOOTING REINFORCING
 - SOUTH ABUTMENT
 - NORTH ABUTMENT
 - WINGWALLS
 - SOUTH PIER
 - NORTH PIER
 - PRESTRESS GIRDERS & BEARINGS
 - DECK DETAILS
 - DECK REINFORCING
 - WEST BARRIER WALL
 - EAST BARRIER WALL
 - EXISTING CONCRETE REMOVALS
 - EXISTING CONCRETE RESTORATION
 - 6000mm APPROACH SLAB
 - JOINT ANCHORAGE & ARMOURING
 - PILE DRIVING - STEAM & DIESEL HAMMERS
 - STANDARDS I
 - STANDARDS II
 - AS CONSTRUCTED ELEV. & DIM.
 - ELECTRICAL EMBEDDED WORK
 - QUANTITIES STRUCTURE I
 - QUANTITIES STRUCTURE II
- APPLICABLE STANDARD DRAWINGS**
- DD-3503 MINIMUM GRANULAR BACKFILL REQUIREMENTS



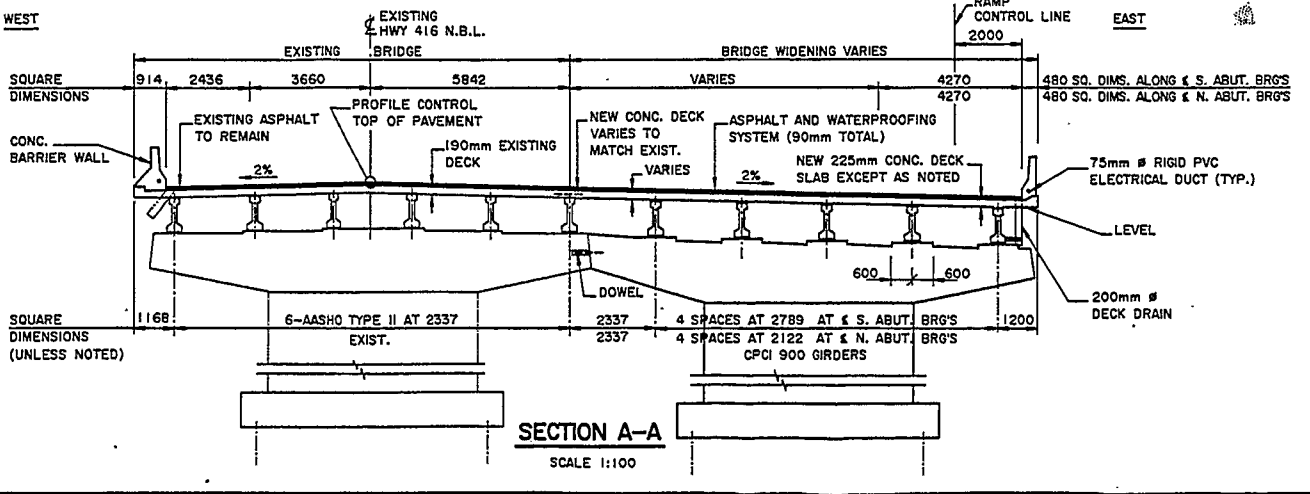
NOTE TO CONTRACTOR

CONTRACTOR TO CHECK ALL RELEVANT EXIST. STRUCTURE DIMENSIONS AND ELEVATIONS SHOWN ON THE DRAWINGS AND ADJUST DIMENSIONS AND ADJUST ELEVATIONS AS REQUIRED TO MATCH EXISTING STRUCTURE AS APPROVED BY THE ENGINEER.

REFERENCE DRAWINGS

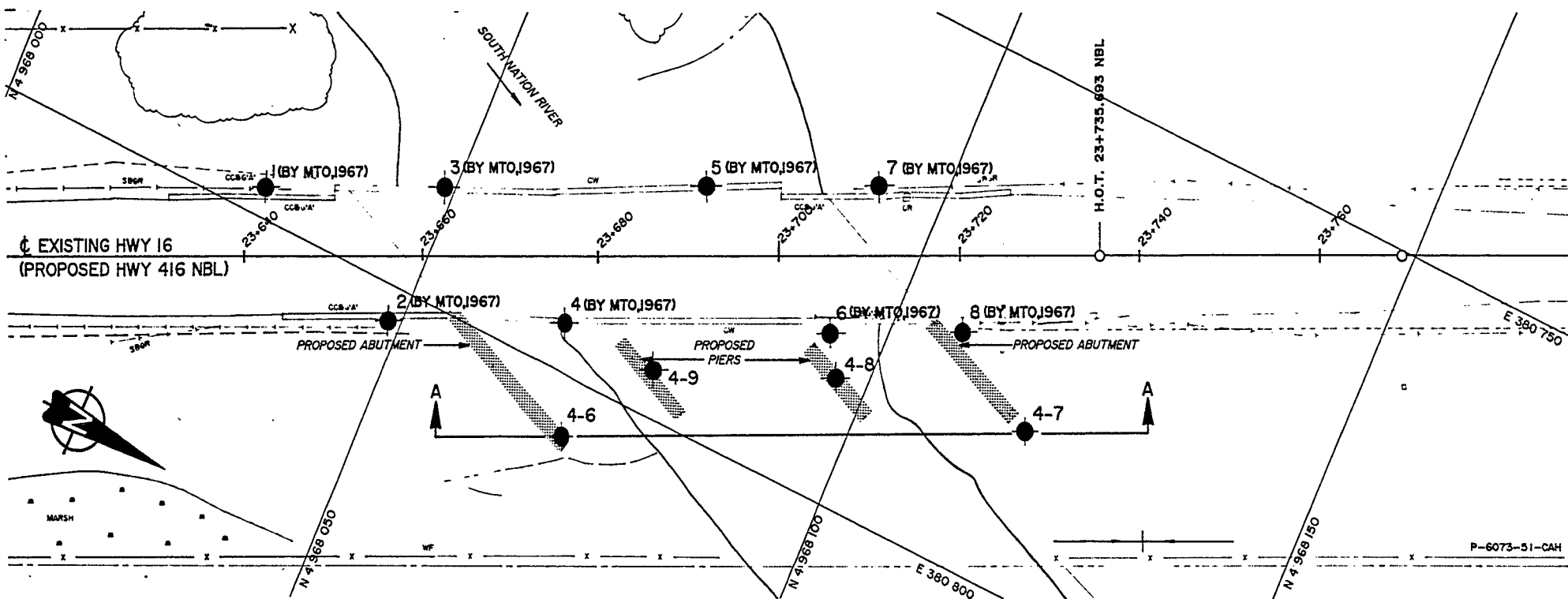
DETAILS OF EXISTING N.B.L. STRUCTURE

B.M. 87.654
N. & W. IN ROOT OF 1.2 BASSWOOD
37.8 LT. STA. 23+580.0

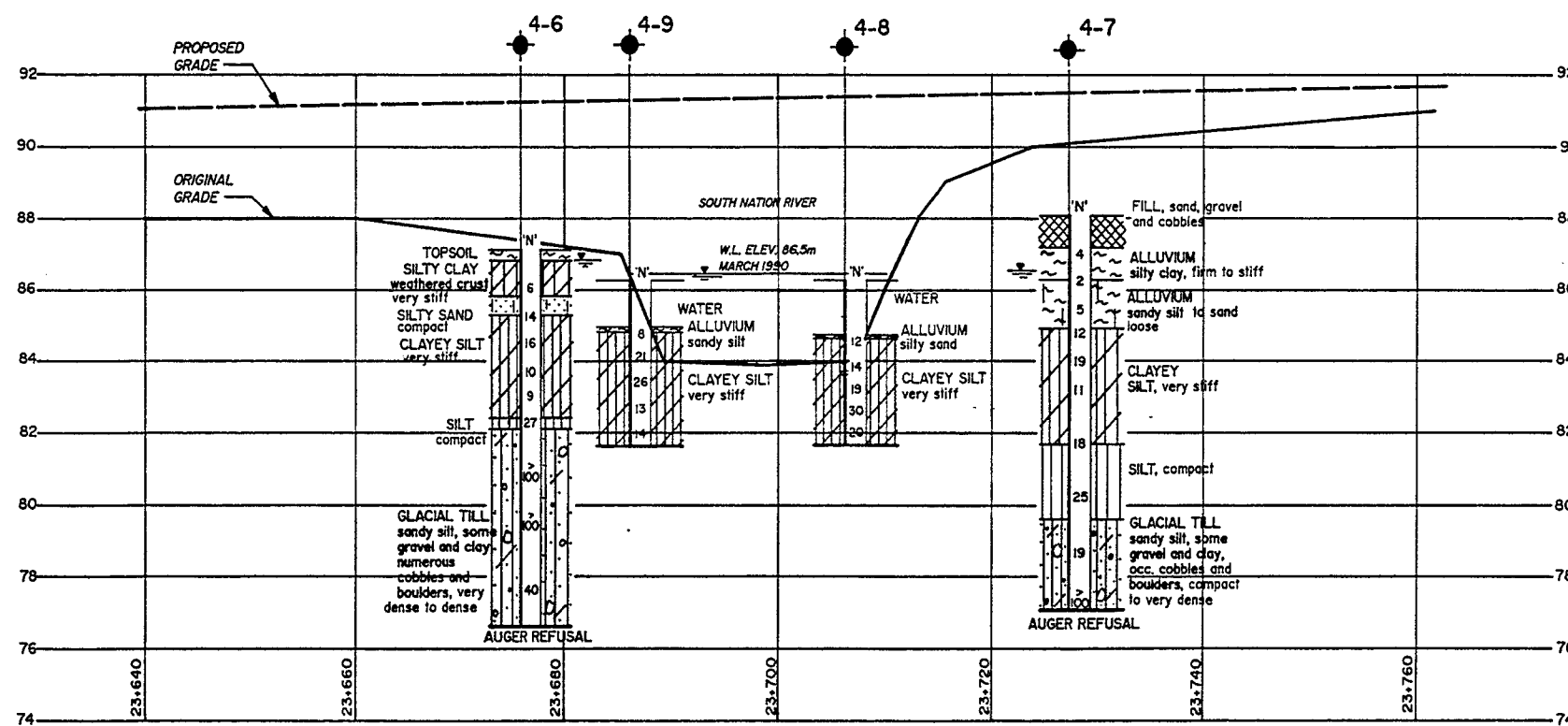


DRAWING NOT TO BE SCALED
100 mm ON ORIGINAL DRAWING

REVISIONS	DATE	BY	DESCRIPTION
DESIGN W.L.	CHK.S.W.L.	CODE	OHBD 93 LOAD CLASS A DATE JAN. 91
DRAWN P.S.H.	CHK G.L.A.	STE 16-189	STRUCT ISCHEME DWG 1



PLAN
SCALE
10m 5 0 5 10m



SECTION A-A

SCALE
10m 5 0 5 10m HORIZ.
3m 1 0 1 3m VERT.

METRIC
DIMENSIONS ARE IN METRES
AND/OR MILLIMETRES UNLESS
OTHERWISE SHOWN. STATIONS
IN KILOMETRES + METRES.

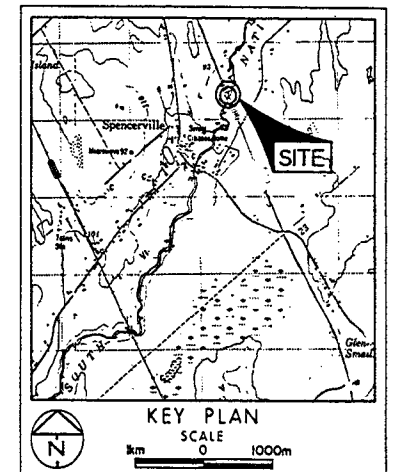
CONT No 92-60
WP No 177-89-02

SOUTH NATION RIVER OVERPASS
HWY 416 NORTH BOUND LANES
BORE HOLE LOCATIONS & SOIL STRATA



SHEET
316

Golder Associates Ltd.



LEGEND

- Bore Hole
- ⊕ Dynamic Cone Penetration Test (Cone)
- ⊕ Bore Hole & Cone
- N Blows/0.3m (Std Pen Test, 475 J/blow)
- CONE Blows/0.3m (60° Cone, 475 J/blow)
- W.L. at time of investigation (MAY 1990)

No	ELEVATION	STATION	OFFSET
4-6	87.1	23+675.8	17.9m Rt
4-7	88.1	23+727.5	17.4m Rt
4-8	86.3	23+706.5	12.5m Rt
4-9	86.3	23+686.0	11.0m Rt

NOTE

The boundaries between soil strata have been established only at Bore Hole locations. Between Bore Holes the boundaries are assumed from geological evidence.

NOTE: The complete foundation investigation and design report for this project and other related documents may be examined at the Engineering Materials Office, Downsview. Information contained in this report and related documents is specifically excluded in accordance with the conditions of Section 102-2 of Form 100.

REV.	DATE	BY	DESCRIPTION
1			

Geocres No 31B-64

HWY No 416 NBL	DIST 9
SUBMD AC CHECKED AC DATE 90/08/23	SITE 16-189B
DRAWN JC CHECKED APPROVED	DWG 1778902-8

REF. No. E-27-416-16-189B