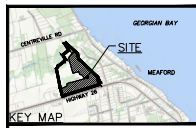


NOTE: ALL WORK WITHIN M.T.O. RIGHT OF WAY TO BE COMPLETED IN ACCORDANCE WITH CURRENT M.T.O. STANDARD PROCEDURES AND SPECIFICATIONS. RESTORE BOULEVARD WITH 100mm TOPSOIL AND SEED.



The position of existing above ground and underground utilities and facilities are not necessarily shown on the drawings, and where shown, the accuracy of the position of such utilities and facilities is not guaranteed. Before starting work, the contractor shall confirm the exact location of all existing utilities and facilities, and shall assume all liability for damage to them.

Drawings shall not be used for construction unless sealed and signed by a Professional Engineer in accordance with the Ontario Regulation 909/03. Any errors and/or omissions shall be reported to Private Engineering Ltd. without delay.



NOTES

1. DATA INFORMATION FROM REGISTERED PLANS 184-007 AND 184-008.
2. TOPOGRAPHIC SURVEY BY JERRETT AND WONG LTD. G.N. 10/01.
3. SUPPLEMENTARY TOPOGRAPHIC SURVEY BY PEL LTD. 02/01.
4. BEST PLAN PROVIDED BY T.A. BENDER ENGINEERING LTD.

LEGEND

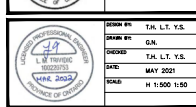
- PROPOSED STORM SEWER
- PROPOSED CATCH BASIN
- PROPOSED STORM CATCH BASIN MANHOLE
- PROPOSED STORM SEWER SERVICE C/W CLEANOUT
- EXISTING 100mm PVE INSULATION (LAW REEL)
- PROPOSED SANITARY MANHOLE
- PROPOSED SANITARY SEWER
- PROPOSED SANITARY SERVICE C/W CLEANOUT
- PROPOSED WATERMAIN
- C/SB STOP VALVE
- PROPOSED HYDRANT
- PROPOSED WATER SERVICE C/W C/SB
- EX. SANITARY MANHOLE
- EX. CATCH BASIN
- EXISTING HYDRANT

BENCHMARK

THE L.P.B. IN SOUTHEAST CORNER OF PROPERTY ON 184-007.

2 [22.03.06] REVISED PER TOWN/ATO/ISSA COMMENTS G.N.

1 [21.08.24] REVISED PER WFO/TOWN COMMENTS G.N.

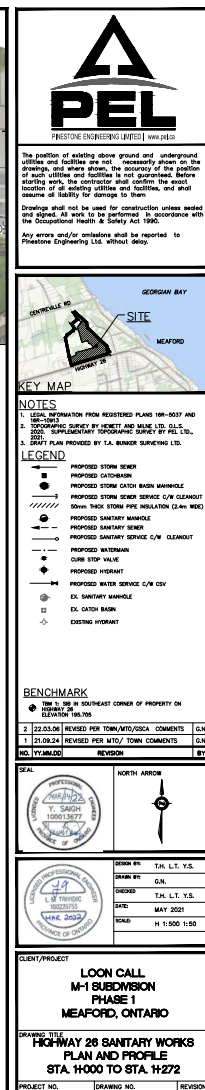
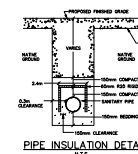
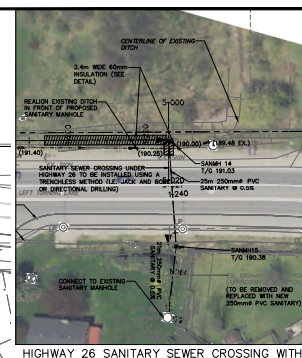


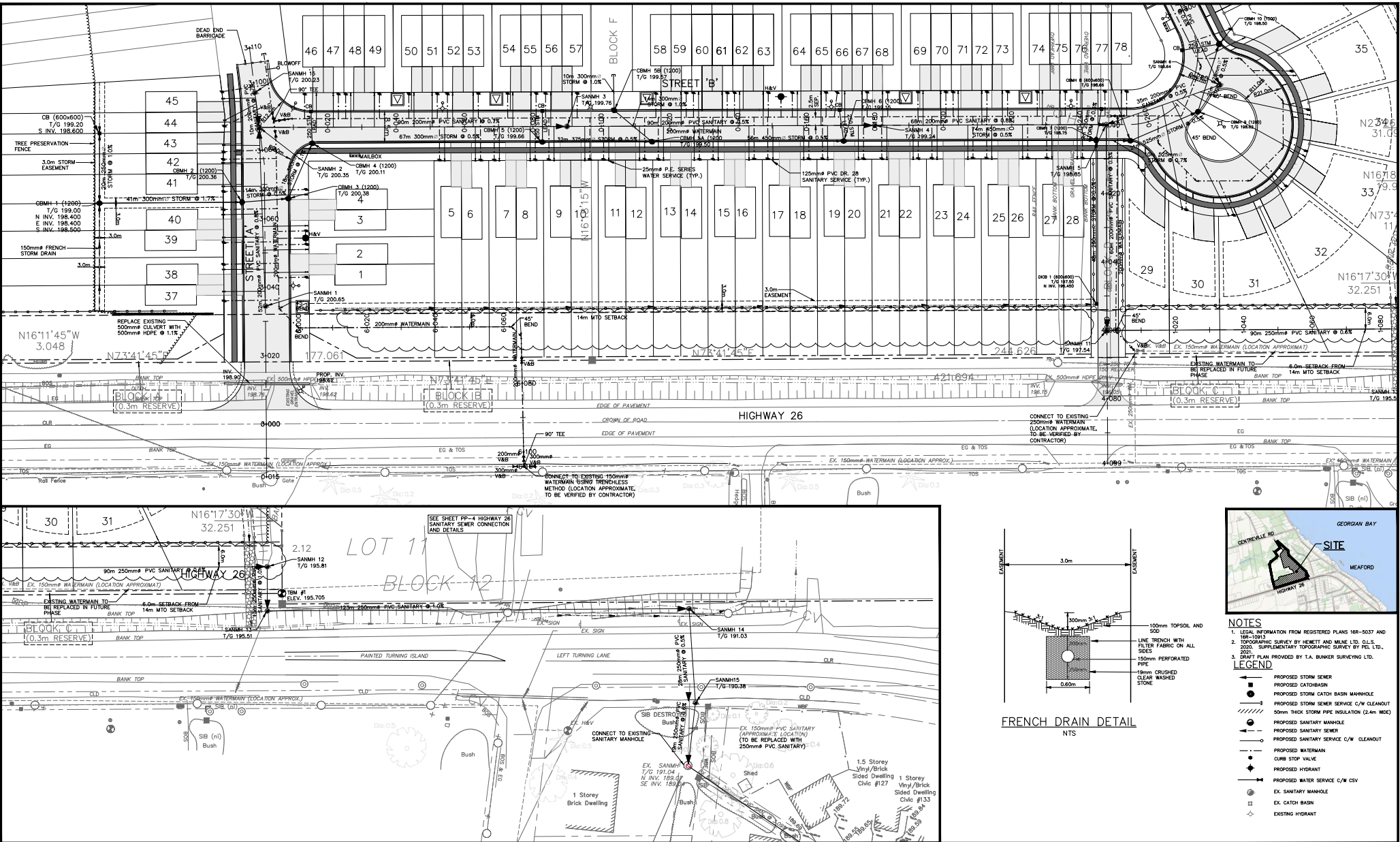
CLIENT/PROJECT

LOON CALL  
M-1 SUBDIVISION  
PHASE 1  
MEAFORD, ONTARIO

DRAWING TITLE  
EMERGENCY ACCESS  
PLAN AND PROFILE  
STA. 4+000 TO STA. 4+099

PROJECT NO. 18-10471-M DRAWING NO. PP-4 REVISION 2





The position of existing above ground and underground utilities and facilities are not necessarily shown on the drawings, and where shown, the accuracy of the position of such utilities and facilities is not guaranteed. Before starting work, the contractor shall confirm the exact location of all existing utilities and facilities, and shall assume all liability for damage to them.

Drawings shall not be used for construction unless sealed and signed. All work to be performed in accordance with the Occupational Health & Safety Act 1990.

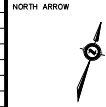
Any errors and/or omissions shall be reported to Pinestone Engineering Ltd. without delay.



SEAL



DESIGNED BY:	TH. L.T. Y.S.
CHECKED BY:	TH. L.T. Y.S.
DATE:	22.03.06
SCALE:	1:500
NO. YY.MMM.DD	1 21.09.24
REVISION	REVISED PER MTO/ TOWN COMMENTS
BY	G.N.



PROJECT:	LOON CALL M-1 SUBDIVISION - PHASE 1 MEAFORD, ONTARIO	PROJECT NO.:	19-11471-M
DRAWING:	GENERAL SERVING PLAN	DRAWING NO.:	SERV-1