

METRIC
DIMENSIONS ARE IN METERS AND/OR MILLIMETERS UNLESS OTHERWISE SHOWN. STATIONS ARE IN KILOMETERS +METERS

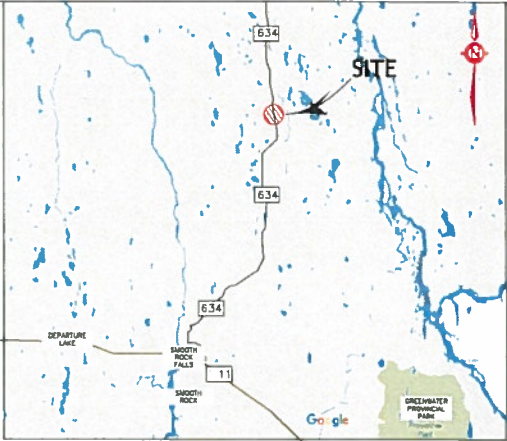
AGREEMENT NO. 5015-E-0007
ASSIGNMENT NO. 1
GEOCRES NO. 42H-63

UNNAMED CREEK CULVERT
(TOWNSHIP OF ADANAC)
BOREHOLE LOCATIONS/SECTION A-A'
SHEET
1



exp Services Inc.

KEY PLAN



LEGEND

Approx. Current Investigated Borehole Locations

LEGEND

- | | |
|----------------------|-----------------|
| ASPHALT | PEAT/SANDY PEAT |
| FILL | SILTY SAND |
| COBBLES AND BOULDERS | SAND AND GRAVEL |
| BEDROCK | |

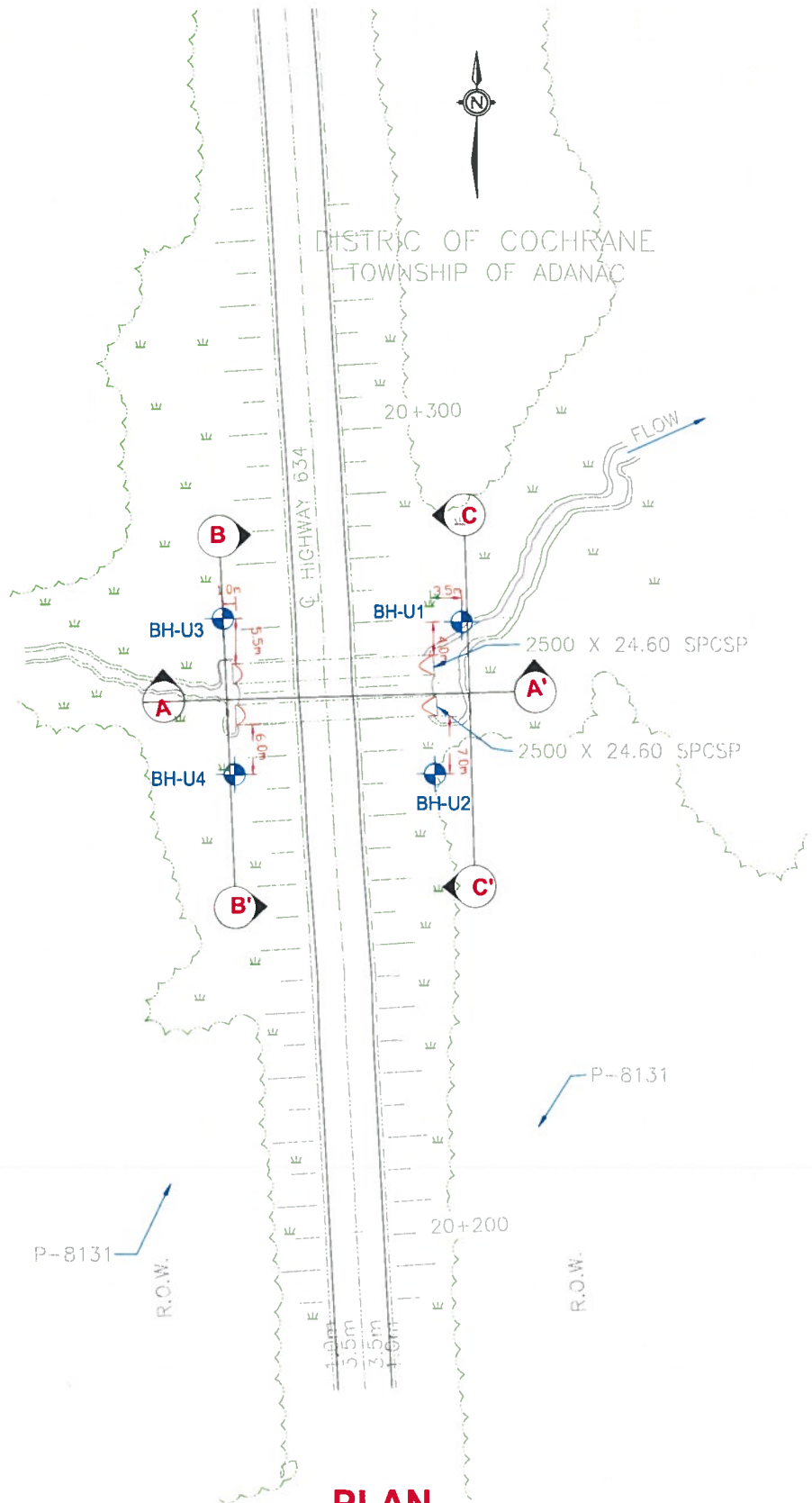
BH No.	APPROX. ELEV.	MTM CO-ORDINATES	
		NORTH	EAST
BH-U1	98.3	5488213	268225
BH-U2	98.5	5488189	268217
BH-U3	98.0	5488013	268196
BH-U4	98.5	5487984	268431

NOTE

This drawing is for subsurface information only. The proposed structure details/works are shown for illustration purposes only and may not be consistent with the final design configuration as shown elsewhere in the Contracts Documents.

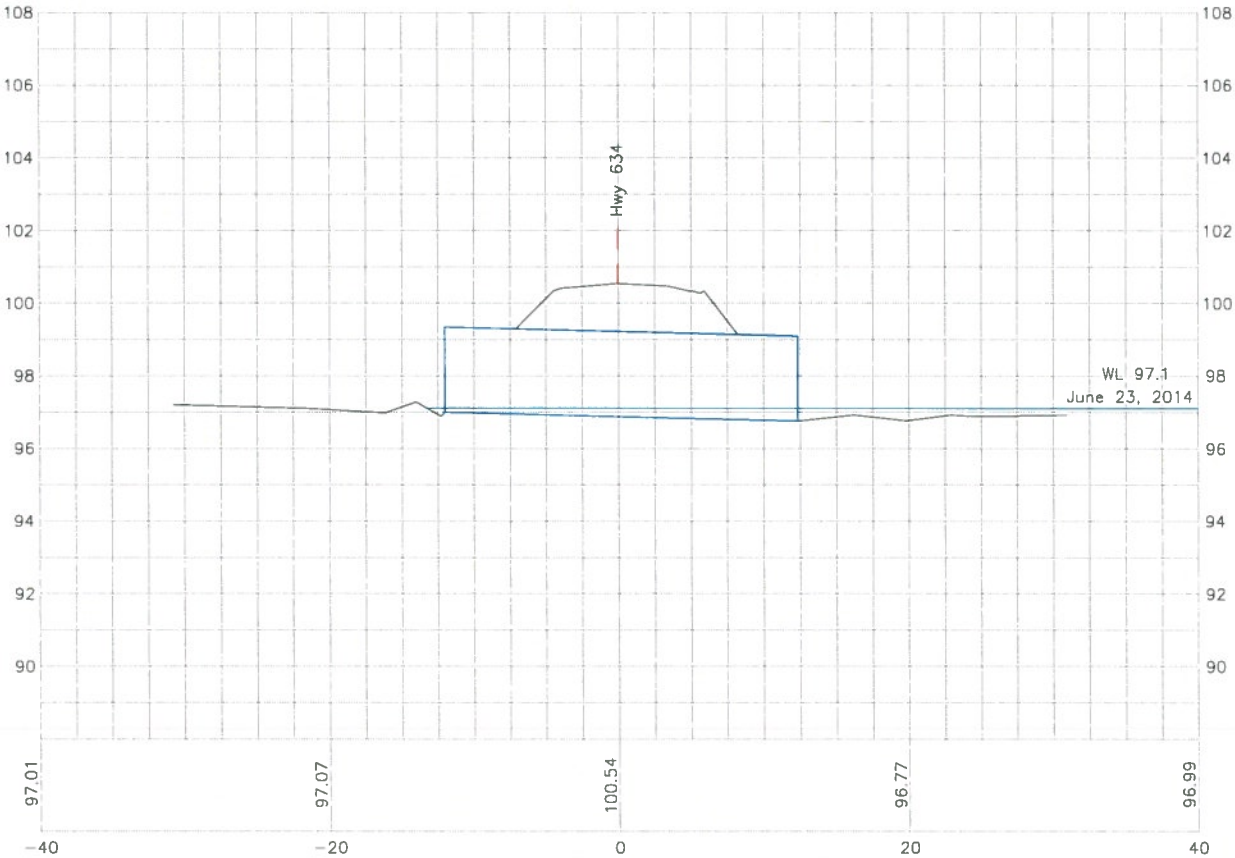
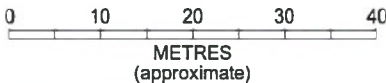
The complete foundation investigation and design report for this project and other related documents may be examined at the Materials Engineering and Research Office, Downsview. Information contained in this report and related documents are specifically excluded in accordance with the conditions of Section GC 2.01 of OPS Gen. Cond.

AUG 2016	SM	FINAL SUBMISSION	
JULY 2016	TK	SUBMISSION FOR REVIEW	
DATE	BY	DESCRIPTION	
SCALE	SEE SCALE BAR	PROJECT NO.	ADM 00233185-A0
SUBMD SM	CHECKED SM	DATE AUG 2016	SITE No. 39E-243/C
DRAWN RB	CHECKED SM	APPROVED SG	DWG. 01



PLAN

UNNAMED CREEK CULVERT SITE 39E-243/C
(SCALE 1:800)
35.3 KM NORTH OF HIGHWAY 11



SECTION A-A'



METRIC
DIMENSIONS ARE IN METERS AND/OR MILLIMETERS UNLESS OTHERWISE SHOWN. STATIONS ARE IN KILOMETERS +METERS

AGREEMENT NO. 5015-E-0007
ASSIGNMENT NO. 1
GEOCRES NO. 42H-63

UNNAMED CREEK CULVERT
(TOWNSHIP OF ADANAC)

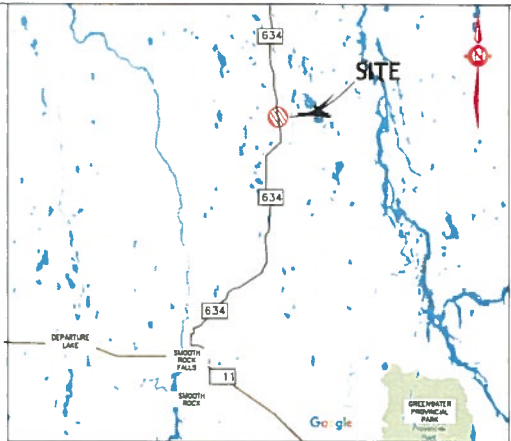
SHEET

1



exp Services Inc.

KEY PLAN



LEGEND



Approx. Current Investigated Borehole Locations

LEGEND



TOPSOIL



SANDY SILT



CLAYEY SILT TILL



SILT SAND

BH No.	APPROX. ELEV.	MTM CO-ORDINATES	
		NORTH	EAST
BH-U3	98.0	5488013	268196
BH-U4	98.5	5487984	268431

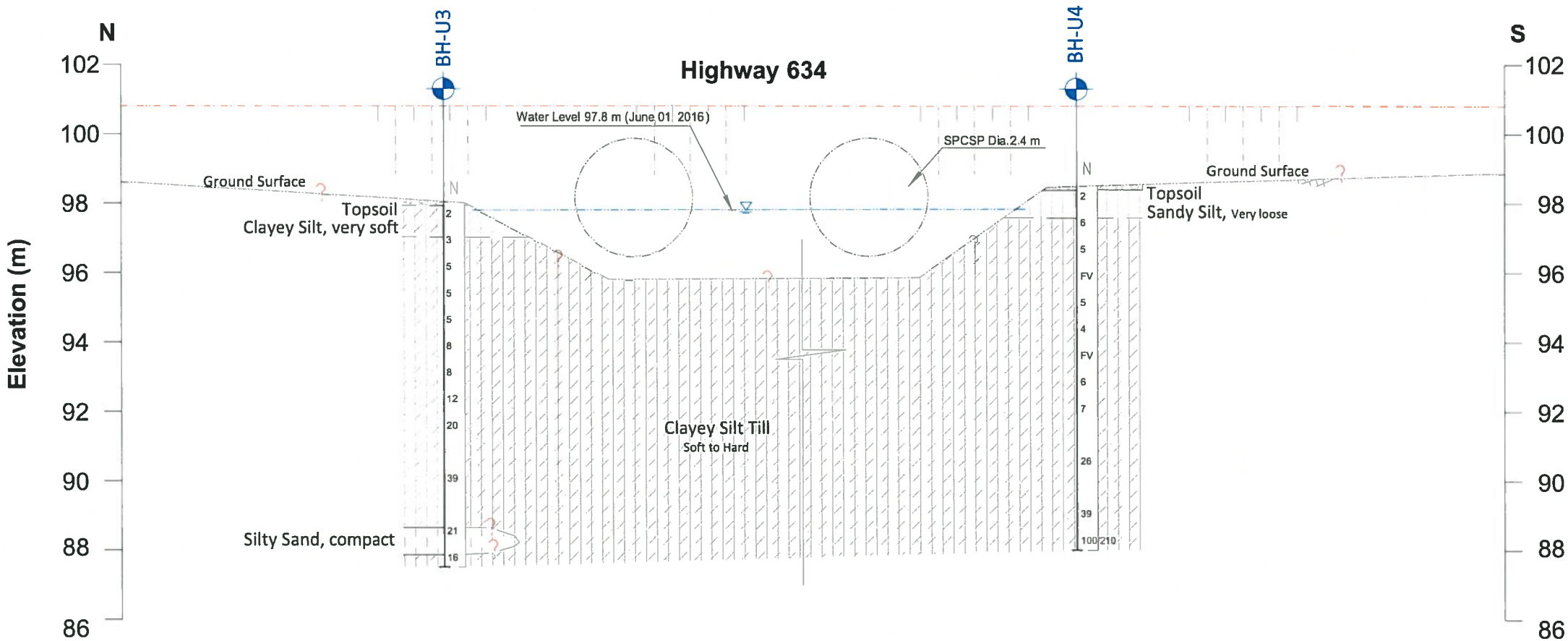
NOTE

This drawing is for subsurface information only. The proposed structure details/works are shown for illustration purposes only and may not be consistent with the final design configuration as shown elsewhere in the Contracts Documents.

The complete foundation investigation and design report for this project and other related documents may be examined at the Materials Engineering and Research Office, Downsview. Information contained in the report and related documents are specifically excluded in accordance with the conditions of Section GC 2.01 of OPS Gen. Cond.

AUG 2016	SM	FINAL SUBMISSION
JULY 2016	TK	SUBMISSION FOR REVIEW
DATE	BY	DESCRIPTION
SCALE	SEE SCALE BAR	PROJECT NO. ADM 00233185-A0
SUBM'D SM	CHECKED SM	DATE AUG 2016 SITE No. 39E-243/C
DRAWN RB	CHECKED SM	APPROVED SG DWG. 02

Unnamed Creek Culvert Inlet



SECTION B-B'



Note:
The geometry of the existing ground surface is assumed based on the investigated elevations of boreholes and the bottom of the creek.

METRIC
DIMENSIONS ARE IN METERS AND/OR MILLIMETERS UNLESS OTHERWISE SHOWN. STATIONS ARE IN KILOMETERS + METERS

AGREEMENT NO. 5015-E-0007
ASSIGNMENT NO. 1
GEOCRE NO. 42H-63

UNNAMED CREEK CULVERT
(TOWNSHIP OF ADANAC)

SOIL STRATA - SECTION C-C'

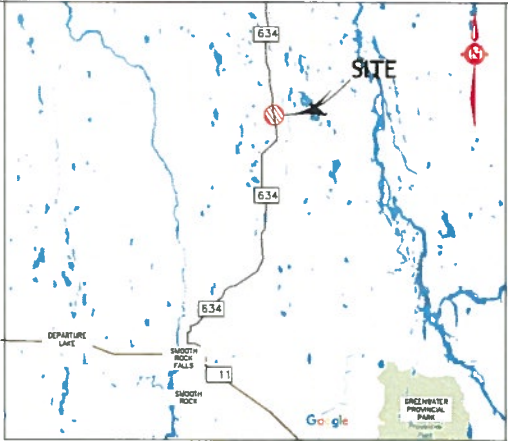
SHEET

1



exp Services Inc.

KEY PLAN



LEGEND



Approx. Current Investigated Borehole Locations

LEGEND



TOPSOIL



SANDY SILT



CLAYEY SILT TILL

BH No.	APPROX. ELEV.	MTM CO-ORDINATES	
		NORTH	EAST
BH-U1	98.3	5488213	268225
BH-U2	98.5	5488189	268217

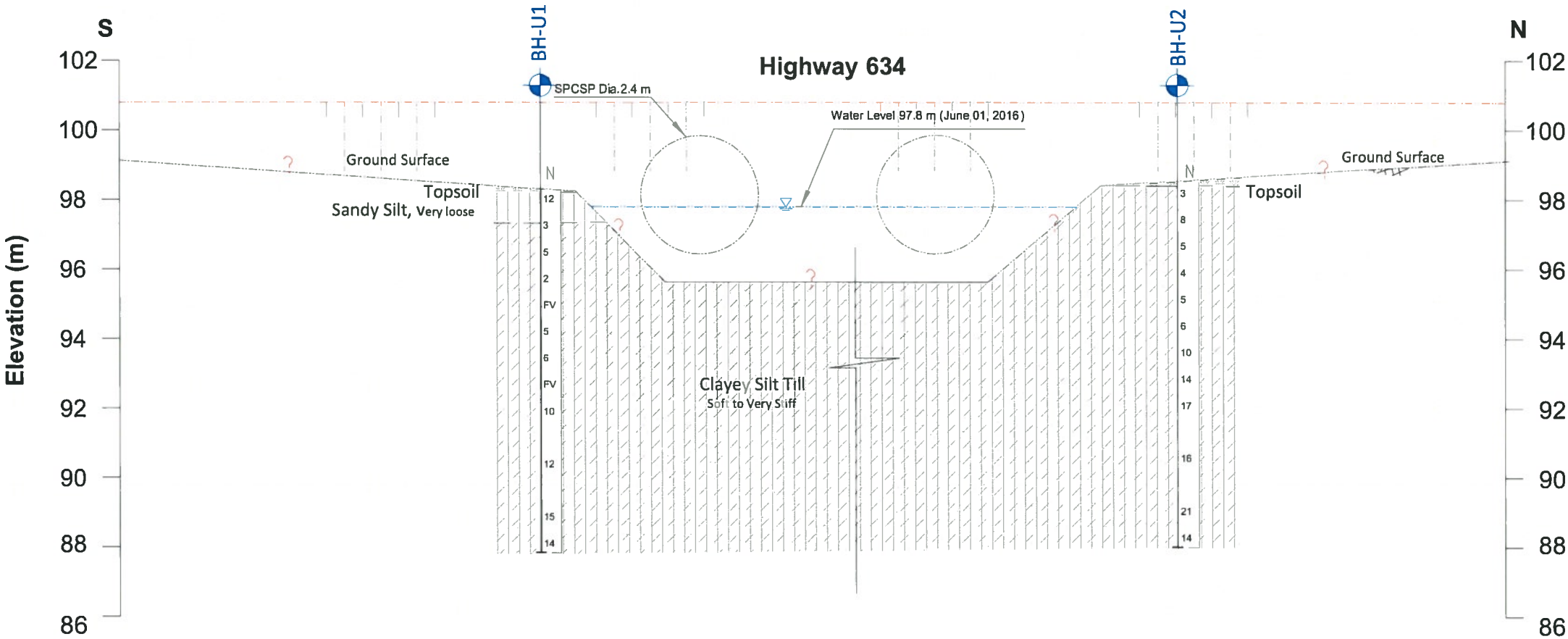
NOTE

This drawing is for subsurface information only. The proposed structure details/works are shown for illustration purposes only and may not be consistent with the final design configuration as shown elsewhere in the Contracts Documents.

The complete foundation investigation and design report for this project and other related documents may be examined at the Materials Engineering and Research Office, Downsview. Information contained in the report and related documents are specifically excluded in accordance with the conditions of Section GC 2.01 of OPS Gen. Cond.

AUG 2016	SM	FINAL SUBMISSION
JULY 2016	TK	SUBMISSION FOR REVIEW
DATE	BY	DESCRIPTION
SCALE	SEE SCALE BAR	PROJECT NO. ADM 00233185-A0
SUBM'D SM	CHECKED SM	DATE AUG 2016 SITE No. 39E-243/C
DRAWN RB	CHECKED SM	APPROVED SG DWG. 03

Unnamed Creek Culvert Outlet



SECTION C-C'



Note:
The geometry of the existing ground surface is assumed based on the investigated elevations of boreholes and the bottom of the creek.