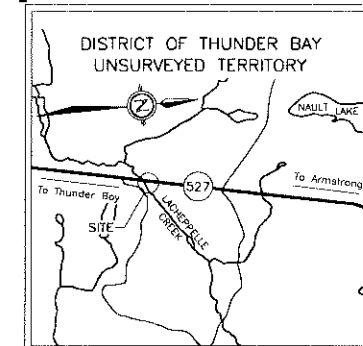










SHEET  
1






A scale bar with a central point labeled '0'. To the left of '0' is a tick mark labeled '1.0 km'. To the right of '0' is a tick mark labeled '1.0 km'. The bar is divided into alternating black and white segments.

**SOIL STRATA SYMBOLS**

 <p><b>BEDROCK</b></p>	 <p><b>SILT</b> <i>sandy</i></p>
 <p><b>FILL</b> <i>sand &amp; gravel</i></p>	 <p><b>SAND &amp; GRAVEL</b></p>
 <p><b>FILL</b> <i>sand &amp; gravel</i> <b>cobbles</b> <b>boulders</b></p>	 <p><b>ROCK FILL</b></p>

### LEGEND

- |   |  |
|---|--|
|  | Borehole                               |
|  | Borehole with Rock Core                |
| 'N'   | Std Pen Test (Blows/0.3m)              |
|  | Wt. at time of investigation SEPT 2003 |

No	ELEVATION	SPRING/ WELLS STA.	LOCATION D/S
1	444.5	19+927	20.0 RT
2	443.9	19+900	20.0 LT
3	450.2	19+825	9.0 LT
4	452.0	19+979	9.0 LT
5	453.3	20+005	4.5 LT
6	451.7	19+965	4.5 LT
7	449.8	19+885	4.5 LT
8	450.2	19+850	4.5 LT
9	449.8	19+813	4.5 LT
TP1	445.0	19+967	21.0 RT
TP2	451.2	19+990	18.0 RT
TP3	453.2	19+988	30.0 RT
TP4	450.6	19+961	11.0 LT
TP5	444.0	19+872	24.0 LT
TP6	448.8	19+849	12.5 LT
TP7	449.8	19+875	5.5 LT
TP8	451.8	19+790	3.0 LT
TP9	449.2	19+860	9.0 RT
TP10	444.6	19+914	18.0 RT
TP11	446.9	19+893	6.0 RT

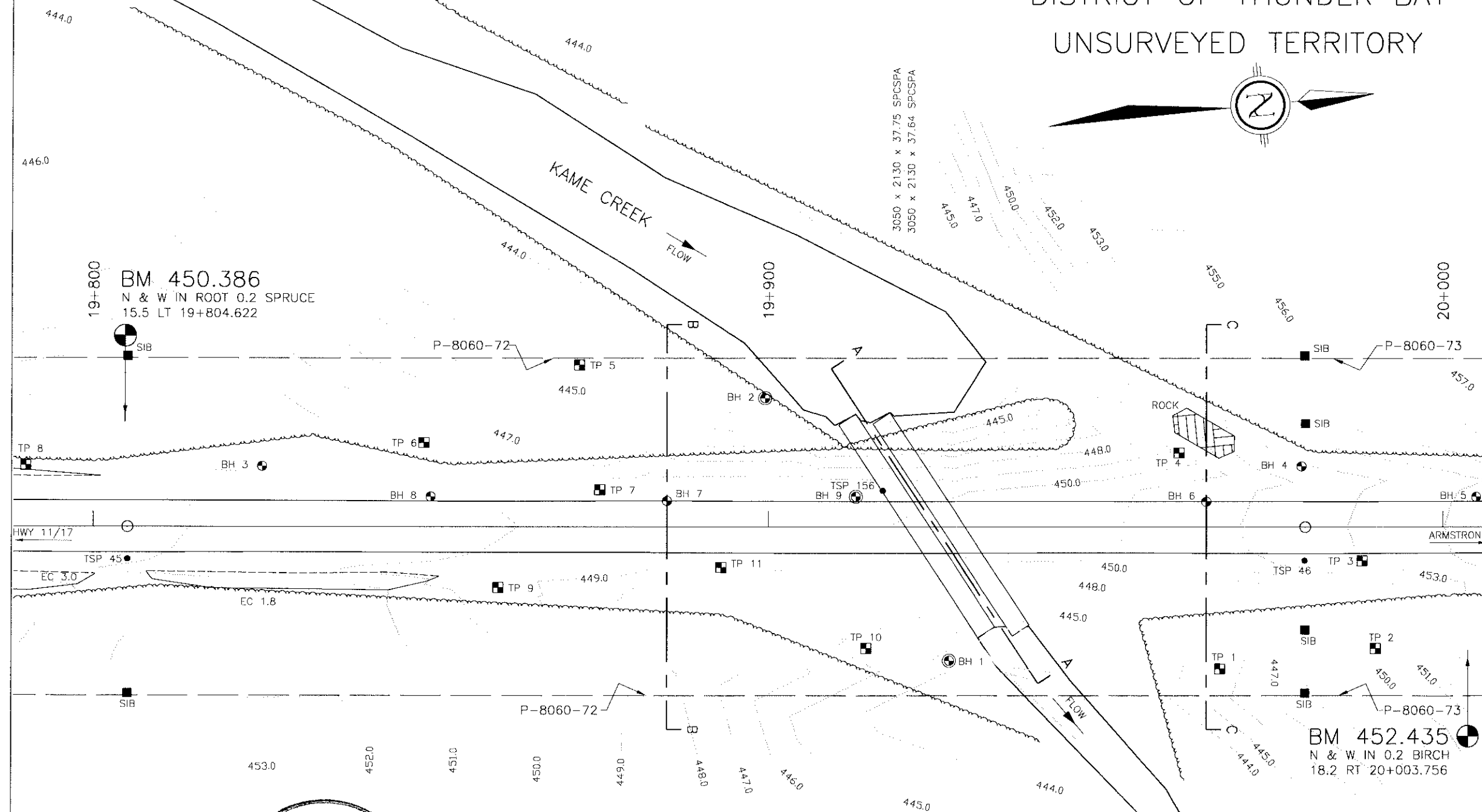
HORIZONTAL DATUM	VERTICAL DATUM
North American Datum 1983 (NAD83)(CSRS)	Canadian Geodetic Vertical Datum
3 Degree Modified Transverse Mercator	1928 Adjustment, Geodetic Elevations
(NTM Zone 15) Grid Coordinates	

—NOTE—

The boundaries between soil strata have been established only at borehole locations. Between boreholes the boundaries are assumed from geological evidence.

[illegible]

HWY 527 LACHAPPELLE CREEK CULVERT REPLACEMENT		DIST	THUNDER BAY
SUBM'D	WH CHECKED	DATE NOV 2003	SITE 4BC-224C
DRAWN	CZ CHECKED	APPROVED	DWG 1



**PLAN**  
SCALE  
HDR 0 1 2 3 4 5 10m



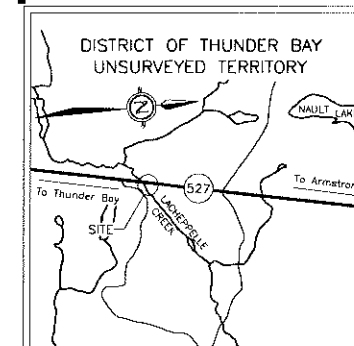
W.D. [Signature]  
Oct. 29/07

DRAWING REFERENCED FROM PLAN B&C-491892-527-6 AND E-491892-527-1, HWY 527, UNSURVEYED TERRITORY 19+680 TO 19+980, SEPT 2002, MINISTRY OF TRANSPORTATION, NORTHWEST REGION										SUB'DW	CH	CHECKED	DATE	NOV 2003	SITE	48C-224C
DRAWING REFERENCED FROM PLAN B&C-491892-527-6 AND E-491892-527-1, HWY 527, UNSURVEYED TERRITORY 19+680 TO 19+980, SEPT 2002, MINISTRY OF TRANSPORTATION, NORTHWEST REGION										DRAWN	CZ	CHECKED	APPROVED		DWG	1

CONT No  
WP NO 70-97-00

LACHAPPELLE CRK CULVERT REPLACEMENT  
HWY 527, Approx. 103km North of HWY 11/17 Jct.  
BOREHOLE LOCATIONS AND SOIL STRATA

SHEET  
2



KEY PLAN

1.0 km 0 1.0 km

SOIL STRATA SYMBOLS	
	BEDROCK
	SILT sandy
	FILL sand & gravel
	SAND & GRAVEL
	FILL sand & gravel cobbles & boulders
	ROCK FILL

LEGEND			
	Borehole		
	Borehole with Rock Core		
	N' Std Pen Test (Blows/0.3m)		
	WL at time of investigation SEPT 2003		
No	ELEVATION	BOREHOLE STA	LOCATION O/S
1	444.5	19+927	20.0 RT
2	443.9	19+900	20.0 LT
3	450.2	19+825	9.0 LT
4	452.0	19+979	9.0 LT
5	453.3	20+005	4.5 LT
6	451.7	19+965	4.5 LT
7	448.8	19+885	4.5 LT
8	450.2	19+850	4.5 LT
9	449.8	19+813	4.5 LT
TP1	445.0	19+967	21.0 RT
TP2	451.2	19+990	18.0 RT
TP3	453.2	19+988	5.0 RT
TP4	450.6	19+961	11.0 LT
TP5	444.0	19+872	24.0 LT
TP6	448.8	19+849	12.5 LT
TP7	449.8	19+875	5.5 LT
TP8	451.6	19+790	9.0 LT
TP9	449.2	19+860	9.0 RT
TP10	444.6	19+914	18.0 RT
TP11	449.9	19+893	6.0 RT

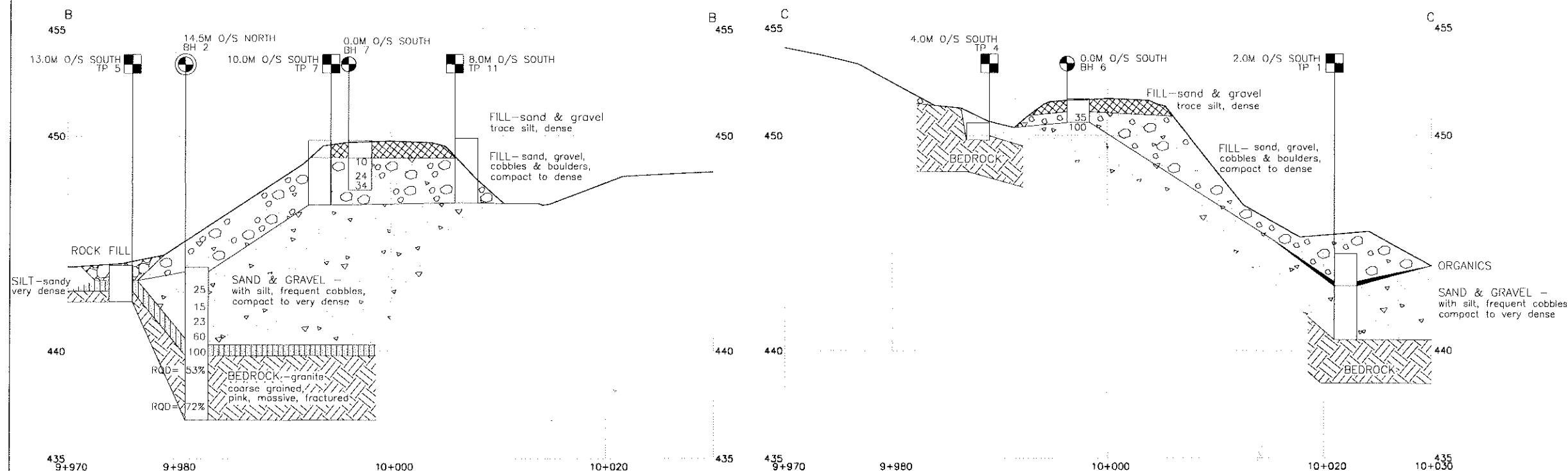
HORIZONTAL DATUM  
North American Datum 1983 (NAD83) (CSRS)  
3 Degree Modified Transverse Mercator  
(MTM Zone 15) Grid Coordinates

VERTICAL DATUM  
Canadian Geodetic Vertical Datum  
1928 Adjustment, Geodetic Elevations

NOTE:  
The boundaries between soil strata have been established only at Borehole locations. Between Boreholes the boundaries are assumed from geological evidence.

REVISIONS			

HWY 527 LACHAPPELLE CREEK CULVERT REPLACEMENT	DIST	THUNDER BAY
SUBM'D	WHICHECKED	DATE
DRAWN	CZ	CHECKED
APPROVED	DATE	APPROVED
DWG	49C-224C	2



SECTION B-B

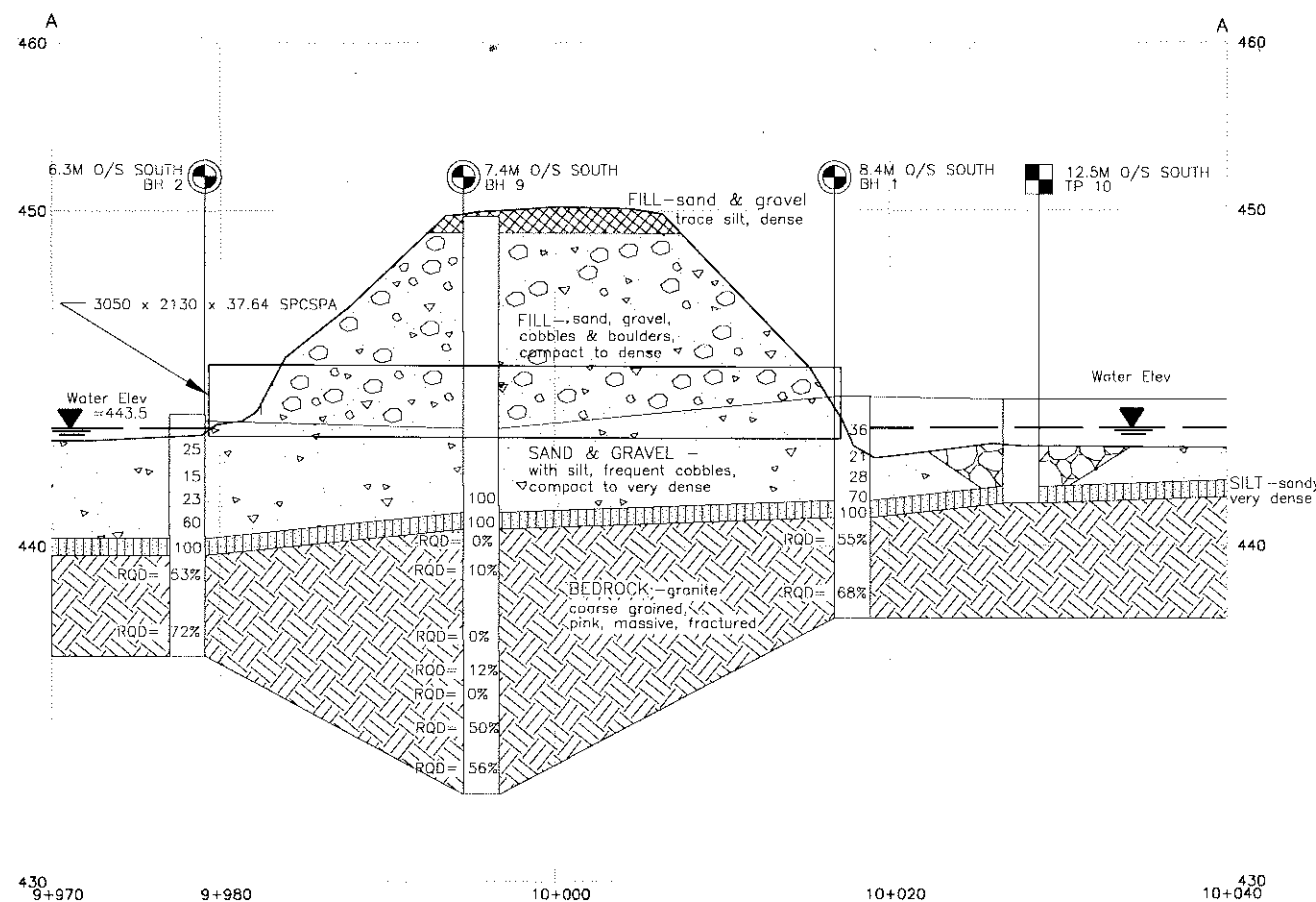
10+000 = 19+885

SCALE  
HOR 0 1 2 3 4 5 10m  
VERT 0 1 2 3 4 5m

SECTION C-C

10+000 = 19+965

SCALE  
HOR 0 1 2 3 4 5 10m  
VERT 0 1 2 3 4 5m



SECTION A-A

10+000 = 19+925

SCALE  
HOR 0 1 2 3 4 5 10m  
VERT 0 1 2 3 4 5m

