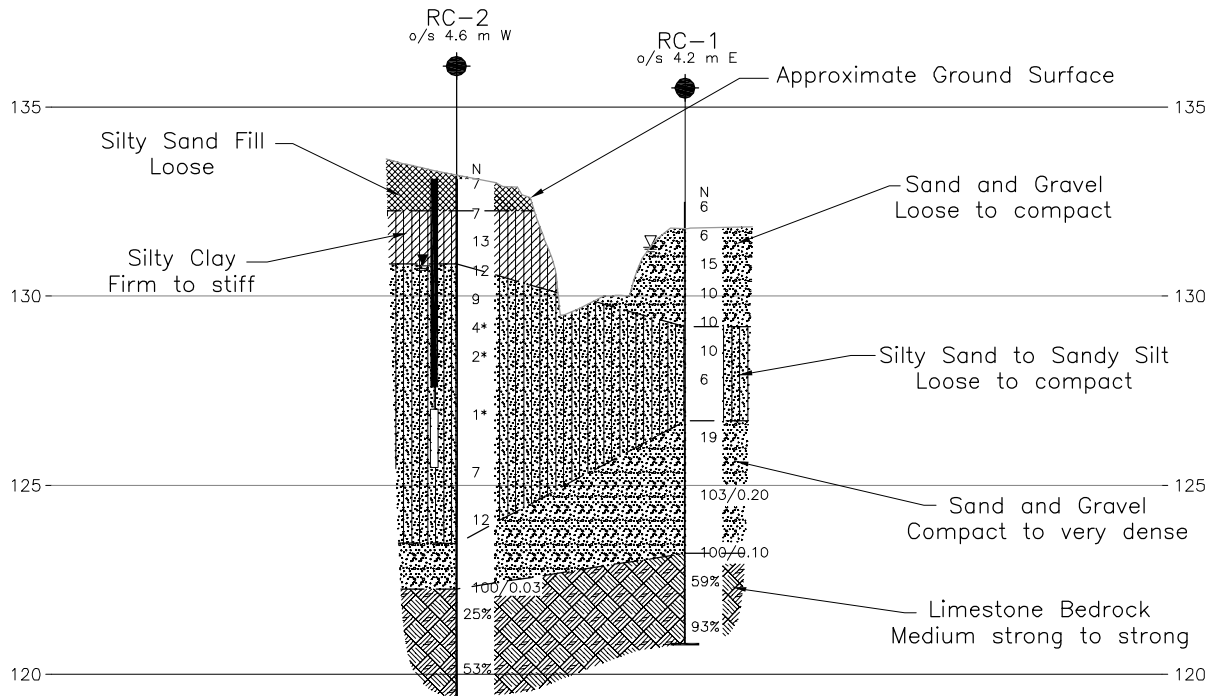


PLAN



SECTION



METRIC
DIMENSIONS ARE IN METRES AND/OR MILLIMETRES UNLESS OTHERWISE SHOWN. STATIONS IN KILOMETRES + METRES.

CONT No.
GWP No. 4044-10-00



HIGHWAY 62
RAWDON CREEK BRIDGE
BOREHOLE LOCATIONS AND SOIL STRATA

SHEET



Golder Associates Ltd.
MISSISSAUGA, ONTARIO, CANADA



KEY PLAN



LEGEND

- Borehole - Current Investigation
- Seal
- Piezometer
- N Standard Penetration Test Value
- 16 Blows/0.3m unless otherwise stated (Std. Pen. Test, 475 j/blow)
- 100% Rock Quality Designation (RQD)
- WL in piezometer, measured on November 29, 2012
- WL upon completion of drilling

BOREHOLE CO-ORDINATES			
No.	ELEVATION	NORTHING	EASTING
RC-1	132.5	4911391.0	226840.6
RC-2	133.1	4911360.5	226848.2

DRAFT

NOTES

This drawing is for subsurface information only. The proposed structure details/works are shown for illustration purposes only and may not be consistent with the preliminary design configuration as shown elsewhere in the Preliminary Design Report.

The boundaries between soil strata have been established only at borehole locations. Between boreholes the boundaries are assumed from geological evidence.

The complete Preliminary Foundation Investigation and Design Report for this project and other related documents may be examined at the Materials Engineering and Research Office, Downsview. Information contained in this report and related documents is specifically excluded in accordance with Section GC 2.01 of OPS General Conditions.

REFERENCE

Base plans provided in digital format by URS, drawing file no.s ACAD-Contours_OG-Hwy62.dwg and ACAD-X-Base_Hwy62.dwg, received December 17, 2012.

NO.	DATE	BY	REVISION
Geocres No.			
HWY. 62		PROJECT NO. 12-1111-0021	DIST. Eastern
SUBM'D. BM	CHKD. LCC	DATE: 2/5/2013	SITE: 11-134
DRAWN: JFC	CHKD. PKS	APPD. LCC	DWG. 1