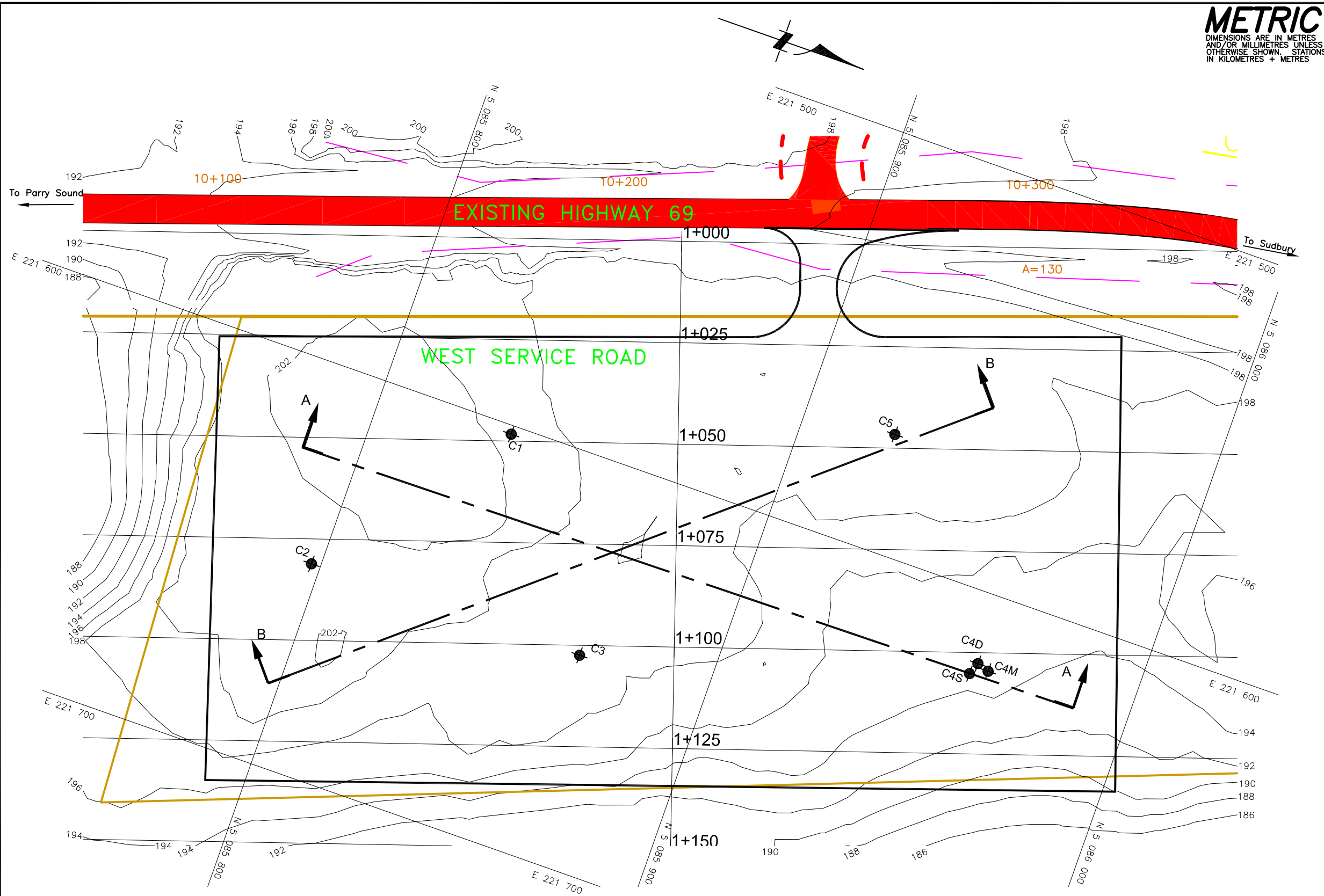


- LEGEND:**
- BOREHOLE BY PML (REF.: 02TF061)
KEY RIVER BRIDGE, GEOCRES No. 461-159
 - KEY RIVER WASTE DISPOSAL SITE MONITORING WELL BY AMEC EARTH AND ENVIRONMENTAL (2008)
 - MOE WATER WELL (SEE TABLE 1)
(D: DECOMMISSIONED WATER WELL)
 - WATER WELL SURVEYED MAY 2008
(SEE TABLE 2)
 - DOOR-TO-DOOR WATER WELL SURVEYED IN MAY 2008 (SEE TABLE 2)
 - SURFACE WATER FLOW DIRECTION
 - EXPOSED BEDROCK
 - HYDROGEOLOGICAL PROFILE (SEE DRAWING 3C)
 - SITE PHOTOGRAPH PLATE No. AND VIEW DIRECTION

NOTE:

THIS DRAWING WAS REPRODUCED FROM A PLAN, DRAWING 652_Display_Locations.dwg PROVIDED BY STANTEC CONSULTING LIMITED AND ONTARIO BASE MAP 2017 5300 50800 AIR PHOTOGRAPHED IN 1980 AND PUBLISHED IN 2002.

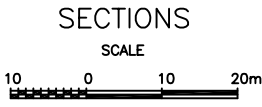
No.	REVISIONS		DATE	BY
HYDROGEOLOGICAL SITE SCREENING PATROL YARD SITE SELECTION STUDY				
HIGHWAY 69, FROM PARRY SOUND TO SUDBURY, ONTARIO G.W.P. 5094 - 06 - 00				
LOCATION PLAN - CENTRAL ALTERNATIVE SITES AND SITE FEATURES OBSERVED IN MAY 2008				
 Ontario		 Stantec Consulting Ltd.		
 Peto MacCallum Ltd. CONSULTING ENGINEERS				
DRAWN: N.A.	DATE	SCALE	JOB NO.	DRAWING NO.
CHECKED: M.A.	DEC. 2008	1 : 16,000	07TX045	2C
APPROVED: M.H.M.				



NOTE:

1. REFER TO DRAWING 4C FOR HYDROGEOLOGICAL PROFILES.

2. THIS DRAWING IS FOR SUBSURFACE INFORMATION ONLY. SURFACE DETAILS AND FEATURES ARE FOR CONCEPTUAL ILLUSTRATION.



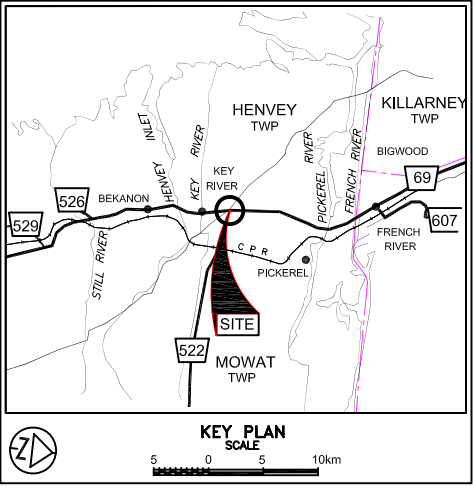
REF No. Stantec Drawing:
652_Design_Central_Interchange_522_CAN83-10_pic2.dwg
dated July 25, 2008

METRIC
DIMENSIONS ARE IN METRES
AND/OR MILLIMETRES UNLESS
OTHERWISE SHOWN. STATIONS
IN KILOMETRES + METRES

CONT No
GWP No 5094-06-00

HIGHWAY 69
HIGHWAY 69 FOUR-LANING
PATROL YARD SELECTION STUDY CENTRAL SITE
BOREHOLE LOCATIONS PLAN

SHEET



LEGEND

Borehole with monitoring well

W L at time of investigation October 1, 2008

BH No	ELEVATION	NORTHINGS	EASTINGS
C1	201.7	5 085 834	221 602
C2	201.7	5 085 798	221 649
C3	198.5	5 085 867	221 648
C4D	194.2	5 085 961	221 617
C4M	194.2	5 085 964	221 618
C4S	194.1	5 085 960	221 620
C5	198.3	5 085 923	221 571

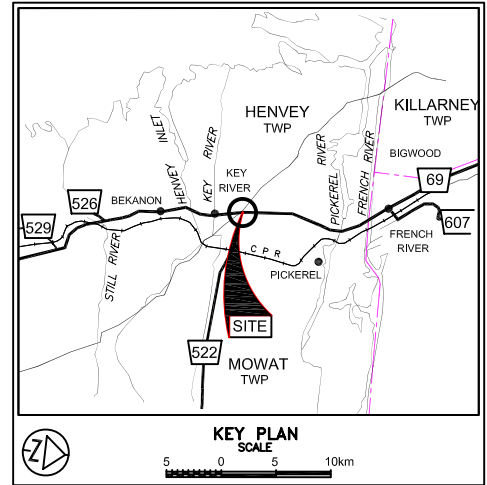
— NOTE —

The boundaries between soil strata have been established only at Borehole locations. Between Boreholes the boundaries are assumed from geological evidence.

DATE	BY	DESCRIPTION

Geocres No. 41H-66

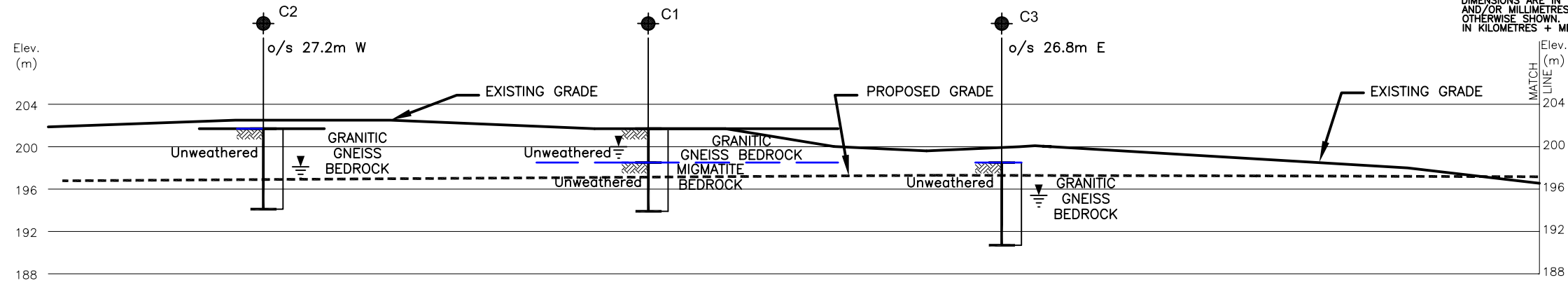
HWY No	69	DIST	54
SUBMTD	MA	CHECKED	MA
DATE	DEC. 18, 2008	SITE	
DRAWN	NA	CHECKED	MHM
APPROVED	BRG	DWG	3C



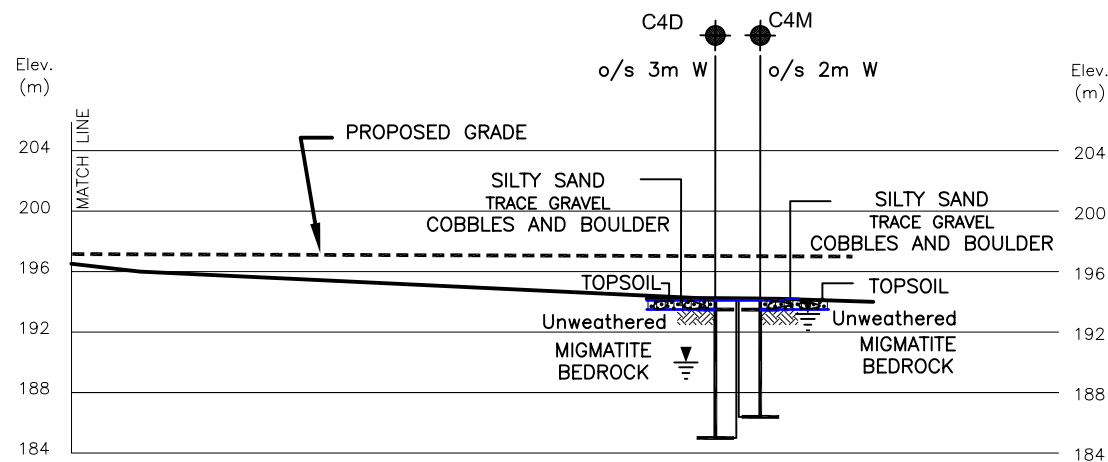
LEGEND			
	Borehole with monitoring well		
	W L at time of investigation October 1, 2008		
BH No	ELEVATION	NORTHINGS	EASTINGS
SEE DRAWING 3C FOR DETAILS			

NOTE
The boundaries between soil strata have been established only at Borehole locations. Between Boreholes the boundaries are assumed from geological evidence.

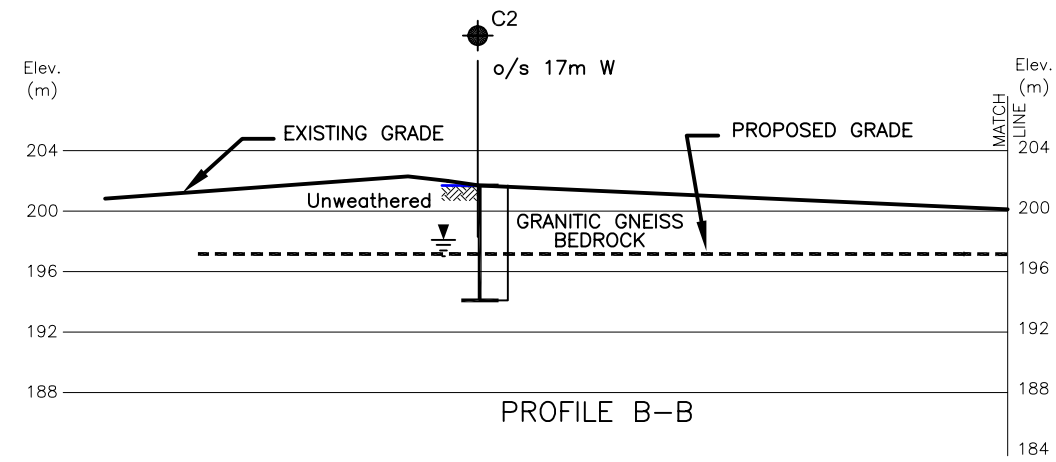
REVISIONS					
	DATE	BY	DESCRIPTION		
Geocres No. 41H-66					
HWY No	69			DIST	54
SUBM'D	MA	CHECKED	MA	DATE DEC. 18, 2008	SITE --
DRAWN	NA	CHECKED	MHM	APPROVED BRG	DWG 4C



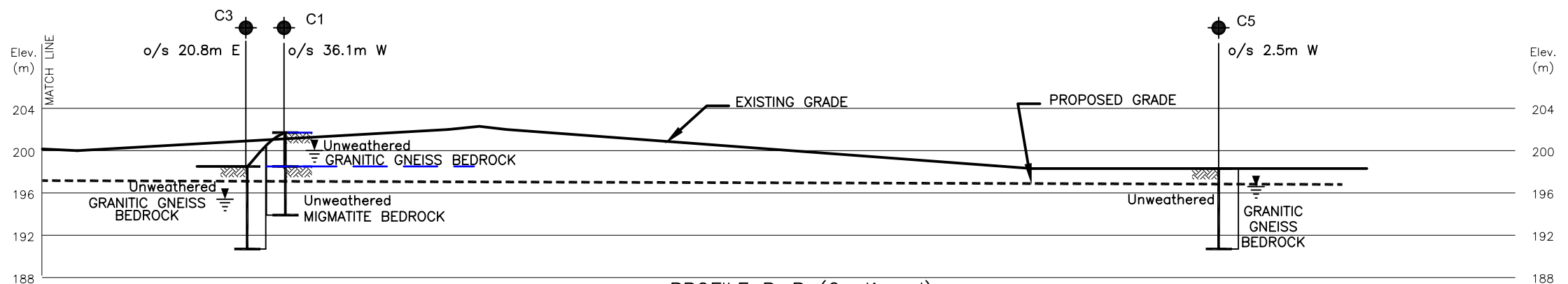
PROFILE A-A



PROFILE A-A (Continued)



PROFILE B-B

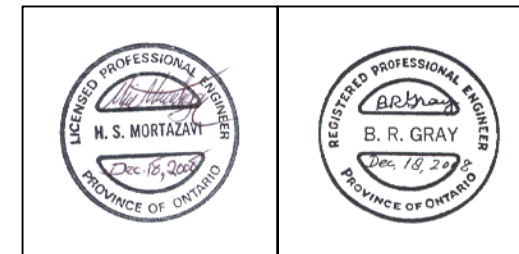
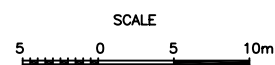


PROFILE B-B (Continued)

NOTES:

- REFER TO DRAWING 3C FOR BOREHOLE LOCATIONS PLAN.
- THIS DRAWING IS FOR SUBSURFACE INFORMATION ONLY. SURFACE DETAILS AND FEATURES ARE FOR CONCEPTUAL ILLUSTRATION.

SECTIONS



REF No. Stantec Drawing:
652_Design_Central_Interchange_522_CAN83-10_pic2.dwg
dated July 25, 2008

