



FINAL REPORT

FOUNDATION INVESTIGATION REPORT **Otasawian River Bridge, Highway 11 (Site No. 39W-002)** **Township of Kohler – New Liskeard (Cochrane) Area, ON**

Prepared for:

Ontario Ministry of Transportation
Regional Director's Office -NE Region
447 McKeown Avenue, Suite 301
North Bay, ON P1B 9S9
Attn: J.P. Perron

Ontario Ministry of Transportation
Pavements and Foundations Section
Foundations Group
Building 'C', Room 223
1201 Wilson Avenue
Downsview, ON M3M 1J8
Attn: T.C. Kim

exp services Inc.
October 19, 2011

Ministry of Transportation

Foundation Investigation Report

Type of Document:
FINAL

Project Name:
Otasawian River Bridge, Highway 11 (Site No. 39W-002)
Township of Kohler – New Liskeard (Cochrane) Area, ON
GEOCRES No. 42F-23

Project Number:
ADM-00201207-AO
THB-00011156-AG

Prepared By:
Demetri N. Georgiou, M.ASc., P.Eng.

Reviewed By:
Stan E. Gonsalves, M.Eng. P.Eng.

exp Services Inc.
56 Queen St, East, Suite 301
Brampton, ON L6V 4M8
Canada



Demetri N. Georgiou, M.ASc., P.Eng.
Principal Engineer
Thunder Bay Branch Manager



Stan E. Gonsalves, M.Eng., P.Eng.
Principal Engineer
Designated MTO Foundation Contact

Date Submitted:
10/19/2011

Legal Notification

This report was prepared by **exp** Services Inc. for the account of the **Ontario Ministry of Transportation**.

Any use which a third party makes of this report, or any reliance on or decisions to be made based on it, are the responsibility of such third parties. **Exp** Services Inc. accepts no responsibility for damages, if any, suffered by any third party as a result of decisions made or actions based on this project.

Table of Contents

1	Part I: FOUNDATION INVESTIGATION	1
1.1	Introduction	1
1.2	Site Description and Geological Setting	1
1.2.1	Site Description.....	1
1.2.2	Geological Setting.....	2
1.3	Investigation Procedures	2
1.3.1	Site Description.....	2
1.3.2	Laboratory Testing.....	3
1.4	Subsurface Conditions	3
1.4.1	Sand and Silt	3
1.4.2	Silty Clay to Clayey Silt.....	4
1.4.3	Silt and Sand	5
1.4.4	Sand and Silt Till.....	6
1.4.5	Refusal and Bedrock	6
1.5	Groundwater Conditions.....	7
1.6	Existing Timber Piles.....	8
1.7	Closure	9

List of Appendices

Appendix A – Figures

- Figure 1 – Site Location Plan
- Figure 2 – Borehole Location Plan
- Figure 3 – Stratigraphic Section A-A
- Figure 4A – Grain Size Distribution – BH1
- Figure 4B – Grain Size Distribution – BH2
- Figure 4C – Grain Size Distribution – BH3
- Figure 4D – Grain Size Distribution – BH4
- Figure 4E – Grain Size Distribution – BH4 (Continued)
- Figure 5A – Plasticity Chart – BH1
- Figure 5B – Plasticity Chart – BH2
- Figure 5C – Plasticity Chart – BH3
- Figure 5D – Plasticity Chart – BH4
- Figure 6 – Borehole Location and Surrounding Features Field Sketch
- Figure 7 – Existing Timber Pile Field Sketch

Appendix B - Photographs

Appendix C – Borehole Logs

1 **Part I: FOUNDATION INVESTIGATION**

1.1 **Introduction**

This report presents the results of a geotechnical investigation completed by **exp** Services Inc. (**exp**) for the Otasawian River Bridge Rehabilitation (Site No. 39W-002), on Highway 11, in the Township of Kohler, about 40.2 km west of the Highway 631 junction, in New Liskeard (Cochrane) Area, Ontario; see Figure 1 – Site Location Plan.

The work was undertaken under Agreement # 5006-E-0060, Assignment No. 5. The terms of reference were as presented by MTO in a letter dated June 13, 2011.

The purpose of the foundation investigation was to examine the existing subsurface conditions within the area of the existing bridge and foundation supports as well as to evaluate the capacity of the existing timber piles. The site specific geotechnical investigation consisted of test borings, borehole logging, and field and laboratory testing. This foundation investigation report has been prepared specifically and solely for the project described herein. It contains the factual results of the field investigation and the associated laboratory testing.

1.2 **Site Description and Geological Setting**

1.2.1 **Site Description**

The site is located on Highway 11, in the Township of Kohler, about 40.2 km west of the Highway 631 junction, in New Liskeard (Cochrane) Area, Ontario. Based on information provided by the MTO, the Otasawian River bridge consists of a three-span supported, reinforced concrete slab on steel girder bridge. The length of the bridge is about 49 m and the individual span lengths are about 16.3 m, 16.5 m and 16.3 m. Based on the MTO records, the bridge was constructed in 1956 and rehabilitated in 1982. The rehabilitation in 1982 was limited to the replacement of expansion joints, deck drain modification, patching of the concrete deck surface, waterproofing and paving. It is understood that the proposed structural rehabilitation will include the replacement of the bridge deck superstructure, which is to be supported on the existing bridge substructure and existing foundations.

Highway 11 runs in an east/west direction and the Otasawian River is generally located in a north/south direction; the river flow direction is to the north. The area is generally forested with mature trees and shrubs and the roadway structure is elevated from the natural topography. Immature vegetation was observed on the slopes/embankments (appears to be vegetated erosion blankets/grids), and beneath the bridge on both sides of the river, blast rock / boulders were observed around the piers. North of the bridge, within the river, 20 timber piles were noted.

The site plan is as shown on the drawings in Appendix A.

1.2.2 Geological Setting

According to the Ontario Ministry of Natural Resources (MNR), Map 5082 and 5083, the regional surficial geology in the area of the river consists of alluvial plain deposits with mainly low local relief and wet surface conditions. In addition, sand alluvial plain deposits with mainly low local relief, channelled and dry surface conditions with a high water table were noted.

According to Bedrock Geology of Ontario Map 2543 (Ministry of Northern Development and Mines, Ontario), the bedrock at the site is from the Paleoproterozoic (1.6 to 2.5 Ga), mafic and ultramafic intrusive rock consisting of Matachewan and Hearst swarms (2454 Ma); diabase dikes.

1.3 Investigation Procedures

1.3.1 Site Description

On July 2, 2011, **exp** personnel visited the site to conduct a site assessment of the existing topographic conditions, accessibility, and to locate possible borehole locations.

To assess the subsurface soil conditions at the site for the bridge rehabilitation, **exp** geotechnical personnel returned to the site between July 12 and 20, inclusive, and monitored the advancement of four (4) boreholes (BH1 to BH4), at the locations shown on Figure 2. The boreholes were advanced near the east and west abutments and east and west piers; drill rig access based on the site topography generally determined the borehole locations. Site photographs of borehole locations are provided in Appendix B.

The drilling was conducted by Thunder Bay Testing & Engineering, an MOE licensed well contractor, using a sub-contracted CME 55 track mounted drill rig, equipped with hollow stem continuous flight augers, a 50 mm outside diameter split spoon sampler, *in situ* shear vane testing equipment and rock coring equipment. The boreholes were advanced to auger and/or split spoon refusal, ranging between about 20.0 m and 37.5 m below ground surface. Upon refusal at BH2 and BH4, rock coring techniques (NQ core size) were used to advance the boreholes about an additional 3.4 m and 3.2 m, respectively. In addition, rock coring techniques were used at BH3 at about 19.4 m to 19.7 m depth to advance the borehole.

During the drilling, soil samples were obtained using a split-spoon sampler with automatic trip hammer, in accordance with Standard Penetration Test (SPT) procedures (ASTM D 1586), at intervals shown on the attached borehole logs (Appendix C). The SPT "N" values were recorded and used to provide an assessment of in-situ consistency or compactness of the non-cohesive soils. *In situ* shear vane tests were performed in the cohesive soil at BH1 and BH2 at about 7.2 m and 8.7 m below ground surface.

Representative samples of the various soil strata encountered in the boreholes were taken to our laboratory in Thunder Bay for further examination by a geotechnical engineer and for laboratory classification testing.

After completion, the boreholes were backfilled with the soil cuttings, generally to about 2.0 m below ground surface and then backfilled with bentonite hole plug material to about 0.3 m below ground surface. The remaining 0.3 m was backfilled with soil cuttings.

Groundwater level measurements were obtained using an electric tape, prior to fully backfilling the boreholes. Following the fieldwork, ground surface elevations at the boreholes and the top of surface water at the Otasawian River were surveyed. The boreholes were measured to local structures/features and using a handheld GPS unit. The ground surface elevations were referenced to a local benchmark; highway centerline at deck on concrete expansion joint at the east end of the bridge (assumed elevation 100.00 m). The elevation and location of the benchmark are detailed on Figure 2.

The locations of the existing timber piles just north of the bridge (assumed to be an abandoned pile bent) were measured to local structures/features and the diameter, stick-up from river bottom and distance below top of river water were measured.

The fieldwork was supervised by a member of **exp**'s geotechnical personnel, Mr. Elwin Farkas, who directed the drilling and sampling operation, logged borehole data in accordance with MTO Soils Classification System, and retrieved soil samples for subsequent laboratory testing and identification.

1.3.2 Laboratory Testing

Following the field investigation representative soil samples were selected for laboratory Atterberg Limit testing (10 samples – LS703/704), hydrometer (5 samples – LS702) and grain size analyses (24 samples – LS602) and natural moisture content determinations (all samples – LS701) for soil type classification purposes as well as to allow estimation of the geotechnical properties. The results are provided in the Appendix A and C, and are discussed herein. Samples remaining after the testing will be stored for one year from issue date of report, after which they may be discarded unless we are requested otherwise.

1.4 Subsurface Conditions

Details of the subsurface conditions encountered at the borehole locations are provided on the Borehole Logs included in Appendix C of this report. The general subsurface soil conditions are summarized in the following sections.

1.4.1 Sand and Silt

Sand and silt was generally encountered surfacing the boreholes. The sand and silt soils were generally described as very loose to loose, brown, moist to wet at depth containing trace to some gravel and roots and rootlets (upper 0.3 m). Occasional cobbles were noted at BH1 and BH4 and trace to some clay was noted at BH1 (3.8 m depth) and BH2 (4.6 m depth). At BH1, a sheet metal piece was noted at about 0.6 m depth; at BH2, wood pieces were noted at about 3.1 m depth; and at BH4, asphalt and wood pieces were noted within the upper 0.1 m. In

addition, trace organics were noted at BH1 (3.8 m depth) and BH2 (3.1 to 3.8 m depth). The sand and silt extended to depths ranging between about 0.1 m and 9.2 m below ground surface.

Eight grain size analyses were performed on representative samples of the sand and silt (BH1-S3, BH1-S6, BH1-S9, BH2-S2, BH2-S3, BH2-S5, BH2-S6, BH2-S8); the results are presented on Figure 4A and 4B. In addition, one hydrometer analysis was performed of the sand and silt (BH2-8); the results are presented on Figure 4B.

All samples within the sand and silt stratum were submitted for moisture contents determinations. The moisture contents ranged between about 4.2 % and 29.6 %.

Based on the saturated moisture contents, unit weights are estimated to range from about 20 kN/m³ to 23 kN/m³.

1.4.2 Silty Clay to Clayey Silt

A cohesive stratum, ranging generally between silty clay and clayey silt was encountered beneath the sand and silt. This cohesive complex was generally described as firm to very stiff, grey, moist to wet, containing trace to some gravel and trace to some sand. Occasional cobbles were noted during augering at BH1 at depths of about 10.4 m to 10.7 m and 12.8 m to 13.1 m below ground surface. At BH2, the soil was described as hard at about 10.7 m to 13.7 m depth as well as at BH3 at about 13.7 m to 15.2 m depth. Two *in situ* shear vane tests were performed and the results were > 100 kPa at BH1 (7.2 m depth) and 20 kPa at BH2 (8.5 m depth). This cohesive soil extended to depths ranging between about 13.7 m and 15.2 m below ground surface.

Two grain size and two hydrometer analyses were performed on representative samples (BH3-S10, BH3-S14); the results are presented on Figure 4C.

All samples within the silty clay and clayey silt were submitted for moisture contents determinations. The moisture contents ranged between about 10.7 % and 21.1 %.

Based on the saturated moisture contents, unit weights are estimated to range from about 20.5 kN/m³ to 23 kN/m³.

At BH4, a mixture of sand, silt and clay layers were encountered underlying the sand and silt upper layer. The sand, silt and clay layers were generally described as brown to grey at depth, moist to wet at depth. The cohesionless soils were described as very loose to compact and the cohesive soils were described as stiff to soft. Trace organics, and roots and rootlets were noted at 1.5 m and 2.3 m depth, respectively and occasional cobbles were noted during augering at about 2.1 m to 2.3 m depth. The sand, silt and clay layers extended to about 9.2 m below ground surface. It is considered that the soil in the upper 4 m to 5 m may be fill from the construction of the embankment.

Four grain size analyses were performed on representative samples of the sand, silt and clay layers (BH4-S3, BH4-S6B, BH4-S7, BH4-S9); the results are presented on Figure 4D. In addition, one hydrometer analysis was performed of the sand, silt and clay (BH4-S3); the results are presented on Figure 4D.

All samples within the sand, silt and clay were submitted for moisture contents determinations. The moisture contents ranged between about 4.1 % and 33.2 %.

Based on the saturated moisture contents, unit weights are estimated to range from about 18.5 kN/m³ to 22.5 kN/m³.

Atterberg limit testing was performed on ten representative samples of the silt and/or clay and indicated that the soil is of low to medium plasticity. The natural moisture contents of the silt and clay were generally below the liquid limits, except at BH4-11B where they were equal. The data is shown on the Plasticity Charts, Figures 5A to 5D, and summarized in the following Table 1-1.

Table 1-1: Summary of Atterberg Limit Testing										
Borehole / Sample	BH1 S10	BH1 S12	BH2 S11	BH3 S3	BH3 S6	BH3 S9	BH3 S15	BH4 S4	BH4 S11A	BH4 S11B
Depth	6.6 m	9.6 m	9.5 m	1.1 m	3.4 m	5.7 m	14.0 m	1.8 m	7.8 m	8.1 m
Liquid Limit, w_L	24	16	16	23	27	16	19	18	36	21
Plastic Limit, w_P	15	13	12	16	15	14	14	15	18	13
Plasticity Index, I_P	9	3	4	7	12	2	5	3	18	8
Moisture Content (%)	18.4	12.0	12.7	14.8	16.8	12.0	13.3	13.1	33.2	21.3

1.4.3 Silt and Sand

Silt and sand was encountered underlying the cohesive soils at BH3 and BH4. The silt and sand was generally described loose to compact, grey, wet containing trace gravel and trace to some clay. The silt and sand extended to 17.2 m at BH3 and 15.6 m at BH4.

Two grain size analyses were performed on representative samples of the silt and/or sand (BH4-S12, BH4-S14); the results are presented on Figure 4D.

All samples within the silt and/or sand were submitted for moisture contents determinations. The moisture contents ranged between about 7.7 % and 18.1 %.

Based on the saturated moisture contents, unit weights are estimated to range from about 21 kN/m³ to 23.5 kN/m³.

Sand and gravel was generally encountered beneath the silt and sand depth at BH3 and was generally described as compact to very dense, grey, wet, containing trace to some silt and some cobbles. A boulder, about 300 mm, was encountered beneath the sand and gravel. The sand and gravel, including the boulder, extended to about 19.7 m below ground surface.

Two grain size analyses were performed on representative samples of the sand and gravel (BH3-S17B, BH3-S18); the results are presented on Figure 4C.

All samples within the sand and gravel were submitted for moisture contents determinations. The moisture contents ranged between about 7.5 % and 9.8 %.

Based on the saturated moisture contents, unit weights are estimated to range from about 23 kN/m³ to 24 kN/m³.

1.4.4 Sand and Silt Till

Sand and silt till was generally encountered beneath all of the above noted overlying soils. The till was generally described as very dense, grey, moist, containing trace gravel to gravelly and trace to some clay. During augering, cobbles were noted at BH1 (18.0 m and 26.2 m depth), BH2, (23.8 m) and BH4 (18.3 m). The till extended to depths of about 20.0 m and 37.5 m below ground surface.

Six grain size analyses were performed on representative samples of the till (BH1-S15, BH1-S18, BH2-S14, BH3-S20, BH4-S16B, BH4-S17); the results are presented on Figures 4A, 4B, 4C and 4E. In addition, one hydrometer analysis was performed of the till (BH1-S18); the results are presented on Figure 4A.

All samples within the till were submitted for moisture contents determinations. The moisture contents ranged between about 4.5 % and 16.9 %.

Based on the saturated moisture contents, unit weights are estimated to range from about 21 kN/m³ to 24.5 kN/m³.

1.4.5 Refusal and Bedrock

Refusal to further augering and/or split spoon penetration was encountered at depths ranging between about 20.0 m and 37.5 m below ground surface. Rock coring techniques (NQ size) were used at BH2, BH3 and BH4; however, bedrock was only proven at BH2. At BH3, rock

This Foundation Investigation Report has been prepared by Ahileas Mitsopoulos, P.Eng. and Demetri N. Georgiou, P.Eng., and reviewed by S.E. Gonsalves, P.Eng., Designated MTO Foundations Contact for **exp**.

We trust that these comments provide you with sufficient information to proceed with design. Should you have any questions, please do not hesitate to contact this office.

Yours truly,
exp Services Inc.



Ahileas Mitsopoulos, P.Eng.
Project Engineer



Demetri N. Georgiou, M.A.Sc., P.Eng.
Principal Engineer
Thunder Bay Branch Manager



S.E. Gonsalves, M.Eng., P.Eng.
Principal Engineer
Designated MTO Foundations Contact

coring techniques indicated the presence of a boulder, about 300 mm, and till beneath the boulder. At BH4, rock coring was used to advance the borehole 3.2 m (25.2 m below ground surface) but only indicated the presence of cobbles and boulders.

The bedrock that was cored in BH2 was described as medium strong rock (25 MPa to 50 MPa compressive strength), very severely fractured to fractured at depth, greenish grey, coarse grained with pink stringers, some quartz pockets and stringers. The gross recovery ranged between about 89% and 100% and the Rock Quality Designation (RQD), which is a modified core recovery ranged between 18% and 64% (very severely fractured to fractured). The RQD increased at depth. Borehole BH2 was advanced about 3.4 m into the bedrock and was terminated at about 40.9 m below ground surface.

1.5 Groundwater Conditions

Groundwater measurements were taken prior to backfilling the boreholes. Groundwater levels are shown on the Borehole Logs in Appendix C and are summarized in Table 1-2, below.

It must be noted that the depth to the groundwater table may fluctuate seasonally, or after periods of extended precipitation or drought, and as such may differ at other times.

Table 1-2: Groundwater Data					
Borehole (UTM Coordinates – NAD 83)	Date Borehole Completed	Date Measured	Ground Surface Elevation²	Depth to Water³	Groundwater Elevation
BH1 (16 U 639240 5513544)	July 15/11	July 17/11	94.59	4.12	90.47
BH2 (16 U 639251 5513544)	July 13/11	July 14/11	92.27	1.90	90.37
BH3 (16 U 639278 5513525)	July 17/11	July 17/11	94.16	2.64	91.52
BH4 (16 U 639291 5513541)	July 19/11	July 20/11	98.95	6.41	92.54
River	N/A	July 14/11	N/A	N/A	90.57
River	N/A	July 17/11	N/A	N/A	90.44
Notes: 1) All units in meters. 2) Elevations surveyed are referenced to highway centerline at deck on concrete expansion joint at the east end of the bridge with assumed elevation (100.00 m). 3) Depths are relative to ground surface. 4) UTM Coordinates from handheld GPS unit and are approximate.					

1.6 Existing Timber Piles

Existing timber piles (20) were noted in the river, north of the bridge. These are assumed to be from an abandoned pile bent at the time of original construction. The piles were located in two rows (i.e. pairs) in north / south direction and the lengths separating the piles in the east / west direction and north / south direction ranged between about 1.1 m and 1.4 m, and 0.6 m and 1.8 m, respectively. In addition, the pile located furthest north and furthest south were single piles (i.e. not paired). Details of the timber piles are shown on Figure 7 and are summarized in Table 1-3 below:

Table 1-3: Existing Timber Piles		
Timber Pile No.	Diameter (mm)	Stick-Up (mm)
1	300	350
2	350	300
3	280	650
4	350	350
5	350	750
6	350	350
7	350	800
8	300	500
9	280	850
10	350	700
11	270	850
12	350	900
13	320	900
14	290	900
15	300	900
16	300	900
17	300	950
18	300	900
19	250	950
20	250	950

There were 20 timber piles noted and ranged in diameter between about 250 mm and 350 mm and the stick-ups ranged between about 300 mm and 950 mm above the river bottom.

1.7 Closure

The comments given in this report are intended only for the guidance of design engineers. The number of boreholes required to determine the localized underground conditions between boreholes affecting construction costs, techniques, sequencing, equipment, scheduling, etc. could be greater than has been carried out for design purposes. Contractors bidding on, or undertaking the works, should, in this light, decide on their own investigations as well as their own interpretations of the factual borehole results so that they may draw their own conclusions as to how the subsurface conditions may affect them.

This Foundation Investigation Report has been prepared by Ahileas Mitsopoulos, P.Eng. and Demetri N. Georgiou, P.Eng., and reviewed by S.E. Gonsalves, P.Eng., Designated MTO Foundations Contact for **exp**.

We trust that these comments provide you with sufficient information to proceed with design. Should you have any questions, please do not hesitate to contact this office.

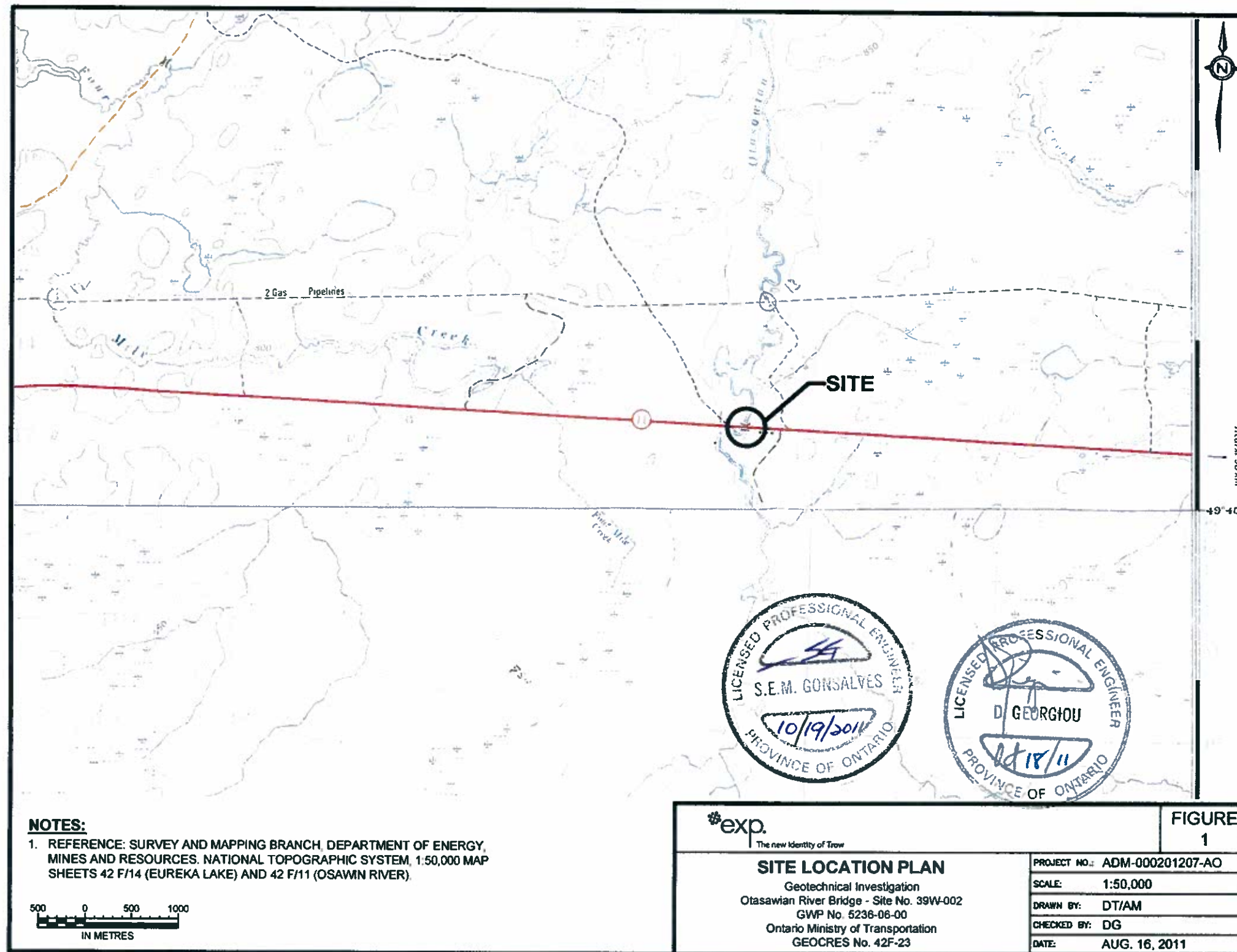
Yours truly,
exp Services Inc.

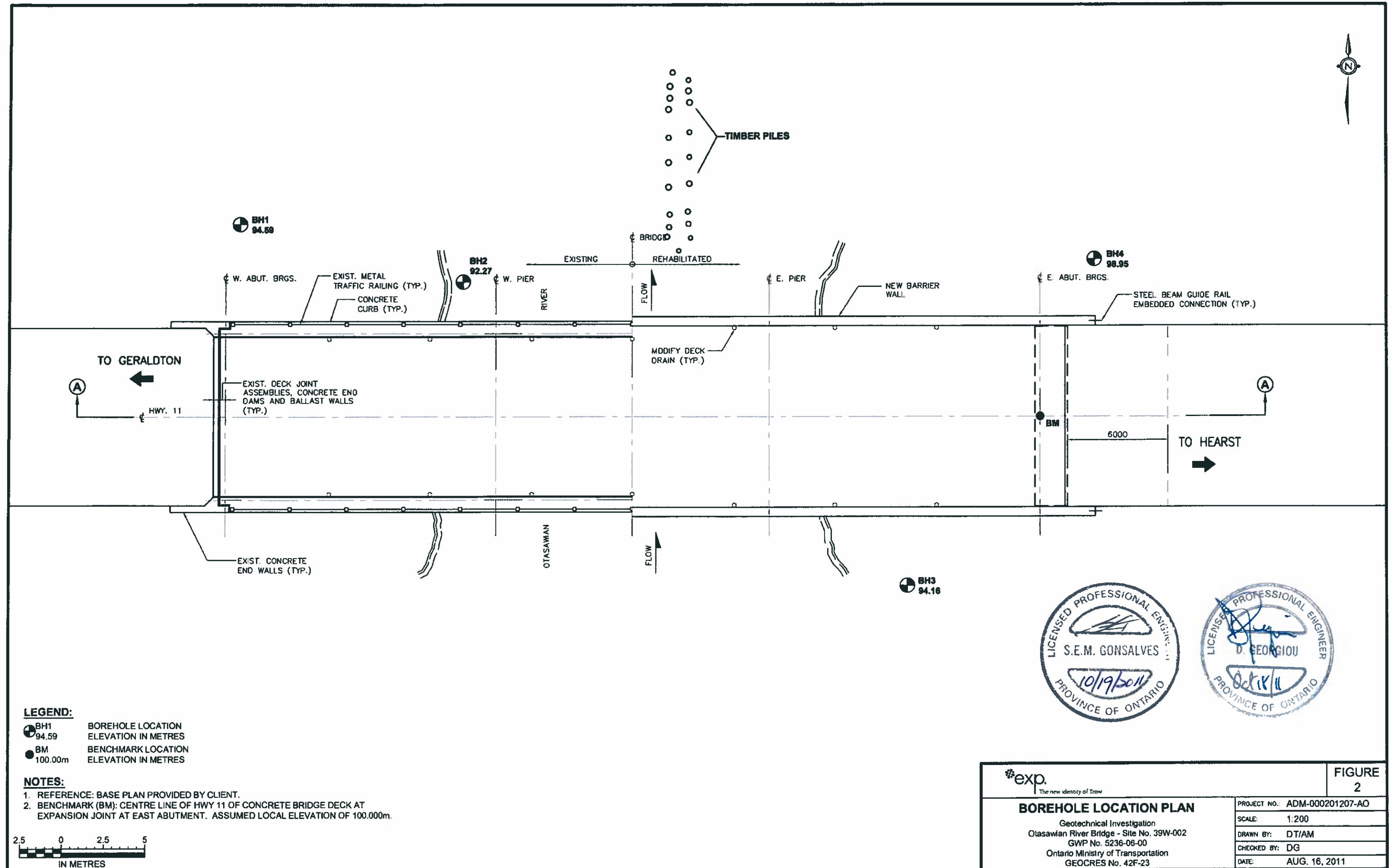
Ahileas Mitsopoulos, P.Eng.
Project Engineer

Demetri N. Georgiou, M.A.Sc., P.Eng.
Principal Engineer
Thunder Bay Branch Manager

S.E. Gonsalves, M.Eng., P.Eng.
Principal Engineer
Designated MTO Foundations Contact

Appendix A – Figures





LEGEND:

● BH1 94.59 BOREHOLE LOCATION ELEVATION IN METRES


● BM 100.00m BENCHMARK LOCATION ELEVATION IN METRES

NOTES:

1. REFERENCE: BASE PLAN PROVIDED BY CLIENT.

2. BENCHMARK (BM): CENTRE LINE OF HWY 11 OF CONCRETE BRIDGE DECK AT EXPANSION JOINT AT EAST ABUTMENT. ASSUMED LOCAL ELEVATION OF 100.000m.



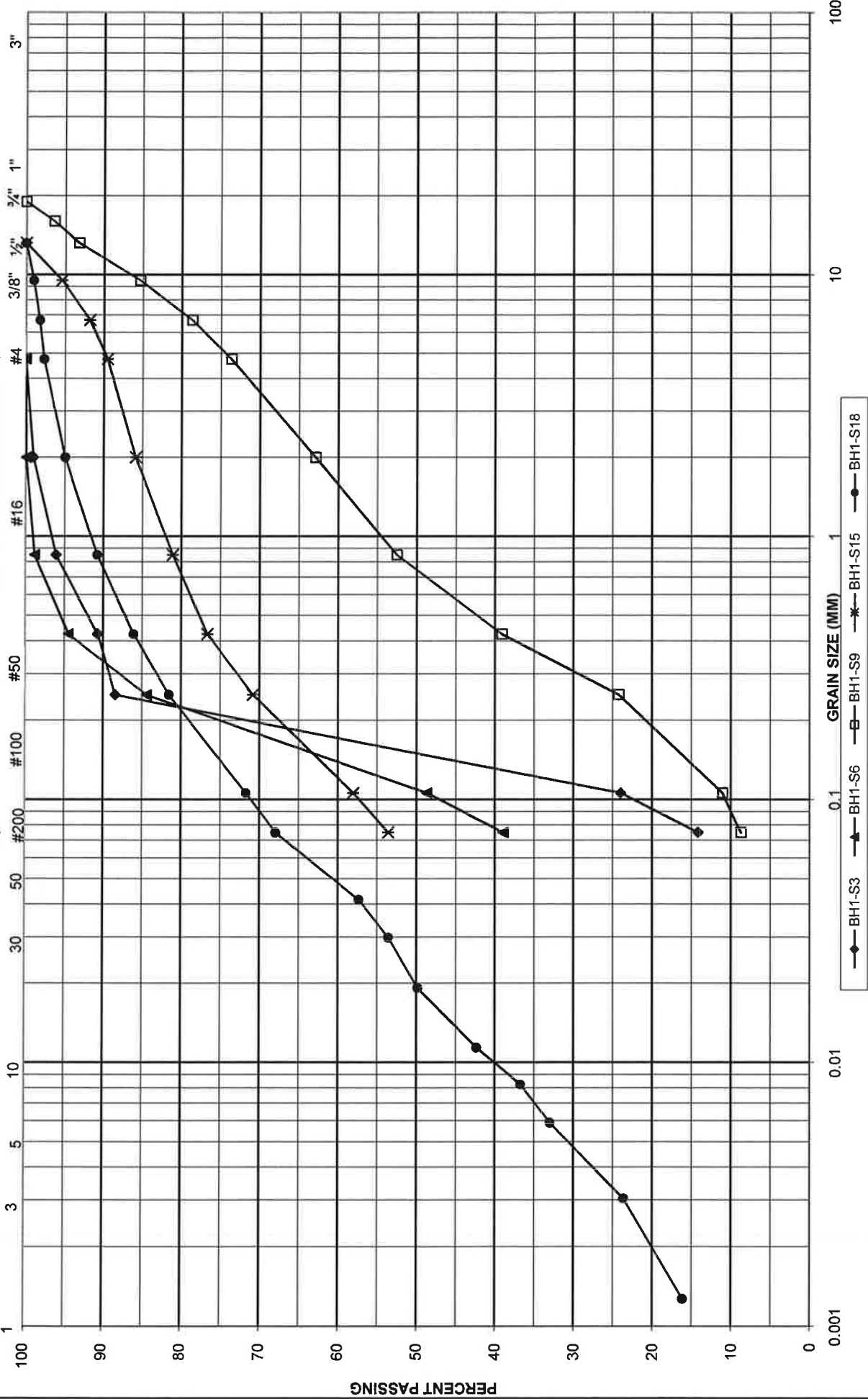
 exp. The new identity of Trow		FIGURE 2	
BOREHOLE LOCATION PLAN		PROJECT NO.: ADM-000201207-AO	
Geotechnical Investigation		SCALE: 1:200	
Oiasawan River Bridge - Site No. 39W-002		DRAWN BY: DT/AM	
GWP No. 5236-06-00		CHECKED BY: DG	
Ontario Ministry of Transportation		DATE: AUG. 16, 2011	
GEOCRES No. 42F-23			

UNIFIED SOIL CLASSIFICATION SYSTEM

CLAY AND SILT	SAND			GRAVEL		
	Fine	Medium	Coarse	Fine	Coarse	

GRAIN SIZE IN MICROMETERS

SIEVE DESIGNATION (Imperial)



UNIFIED SOIL CLASSIFICATION SYSTEM

CLAY AND SILT

SAND

GRAVEL

Fine

Medium

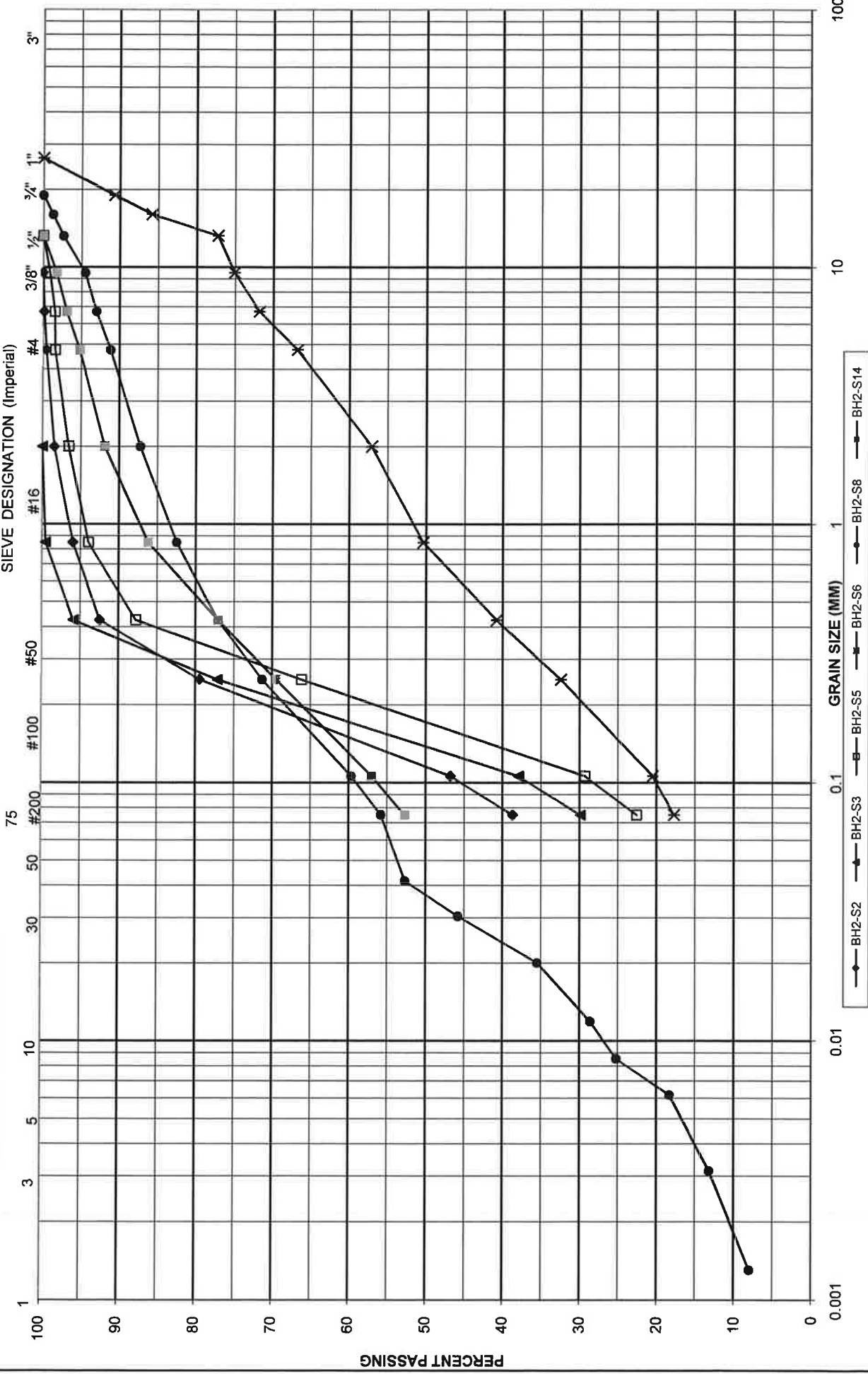
Coarse

Fine

Coarse

GRAIN SIZE IN MICROMETERS

SIEVE DESIGNATION (Imperial)



GRAIN SIZE DISTRIBUTION - BH2
Otasawian River Bridge - Site No. 39W-002 - GEOCRES No. 42F-23

FIGURE No. 4B

Ref. No. ADM-00201207-AO

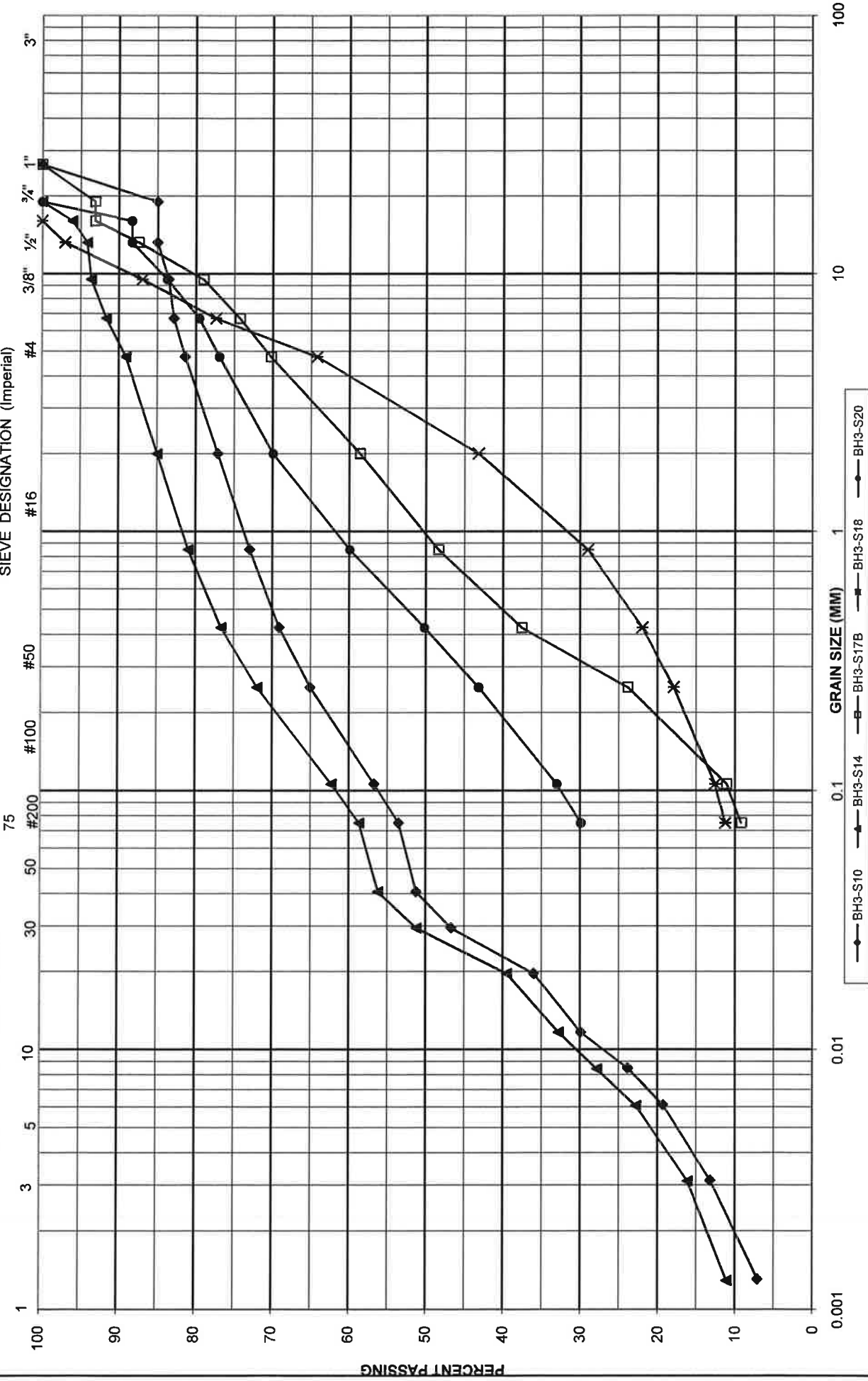
DATE August 19, 2011

UNIFIED SOIL CLASSIFICATION SYSTEM

CLAY AND SILT		SAND			GRAVEL		
		Fine	Medium	Coarse	Fine	Coarse	

GRAIN SIZE IN MICROMETERS

SIEVE DESIGNATION (Imperial)

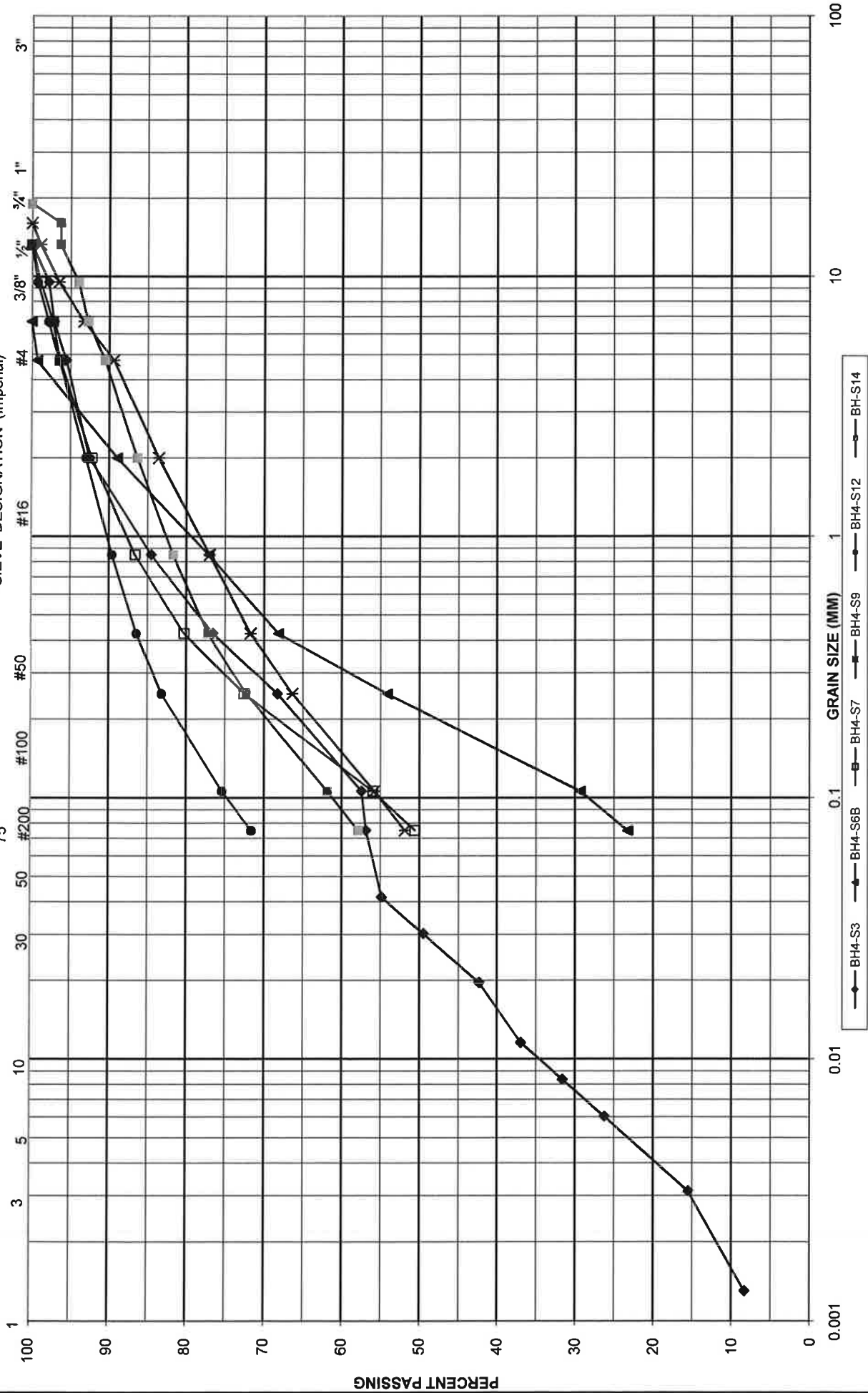


UNIFIED SOIL CLASSIFICATION SYSTEM

CLAY AND SILT		SAND			GRAVEL		
		Fine	Medium	Coarse	Fine	Coarse	

GRAIN SIZE IN MICROMETERS

SIEVE DESIGNATION (Imperial)



GRAIN SIZE DISTRIBUTION - BH4

Otasawian River Bridge - Site No. 39W-002 - GEOCRETS No. 42F-23

FIGURE No. 4D

Ref. No. ADM-00201207-AO

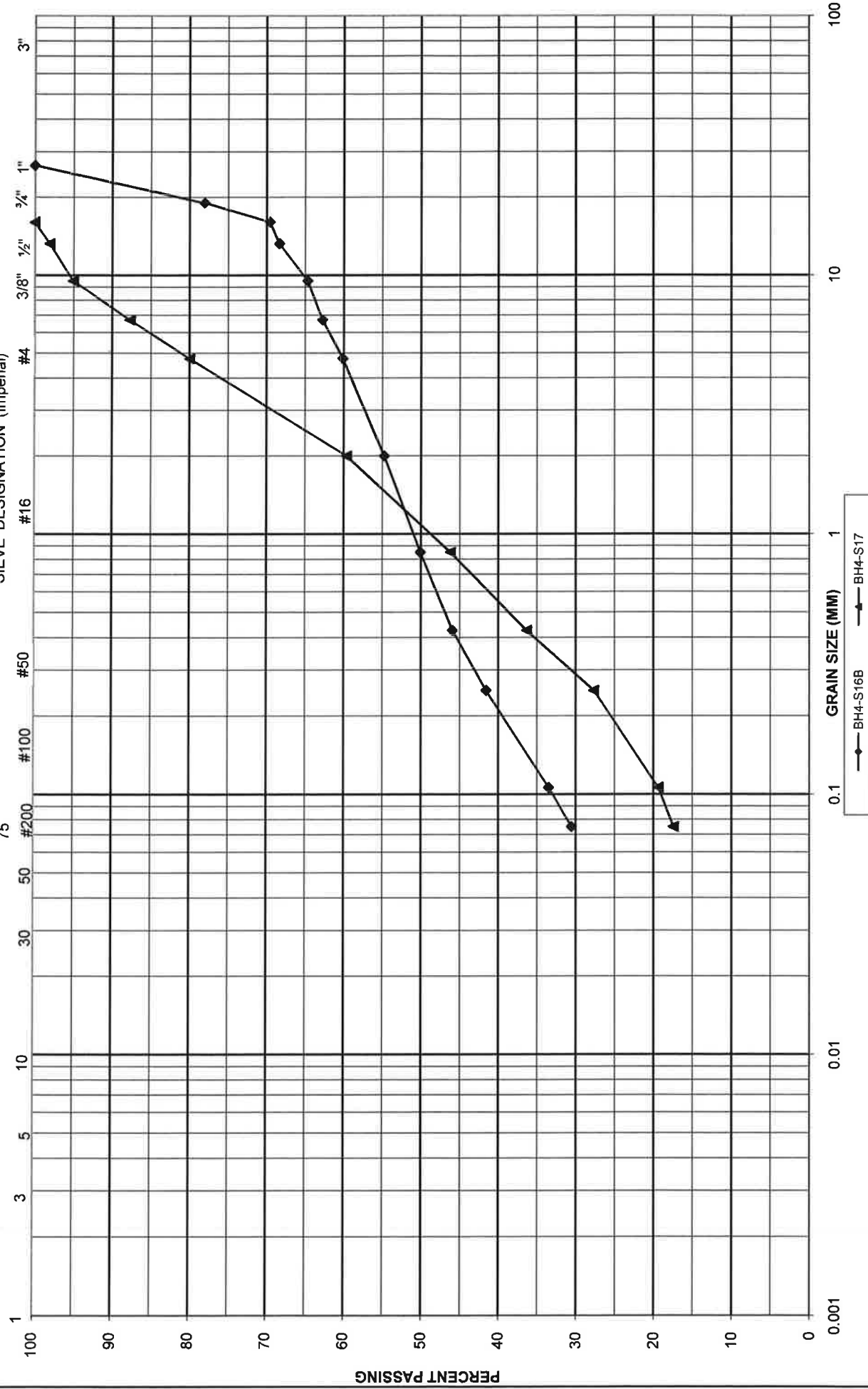
DATE August 19, 2011

UNIFIED SOIL CLASSIFICATION SYSTEM

CLAY AND SILT		SAND			GRAVEL		
		Fine	Medium	Coarse	Fine	Coarse	

GRAIN SIZE IN MICROMETERS

SIEVE DESIGNATION (Imperial)



GRAIN SIZE DISTRIBUTION - BH4 (CONTINUED)

Otasawian River Bridge - Site No. 39W-002 - GEORES No. 42F-23

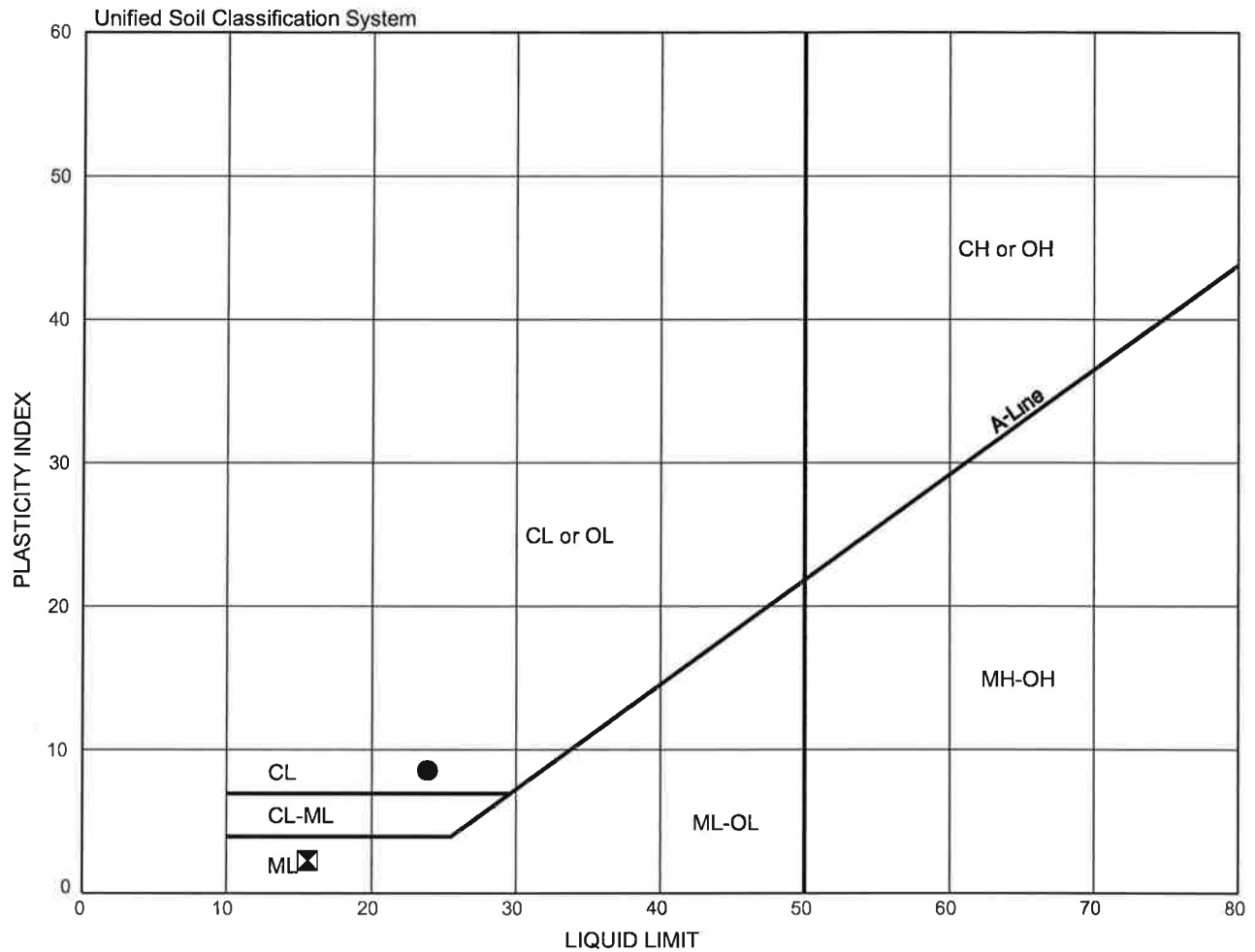
FIGURE No. 4E

Ref. No. ADM-00201207-AO

DATE August 19, 2011

Plasticity Chart

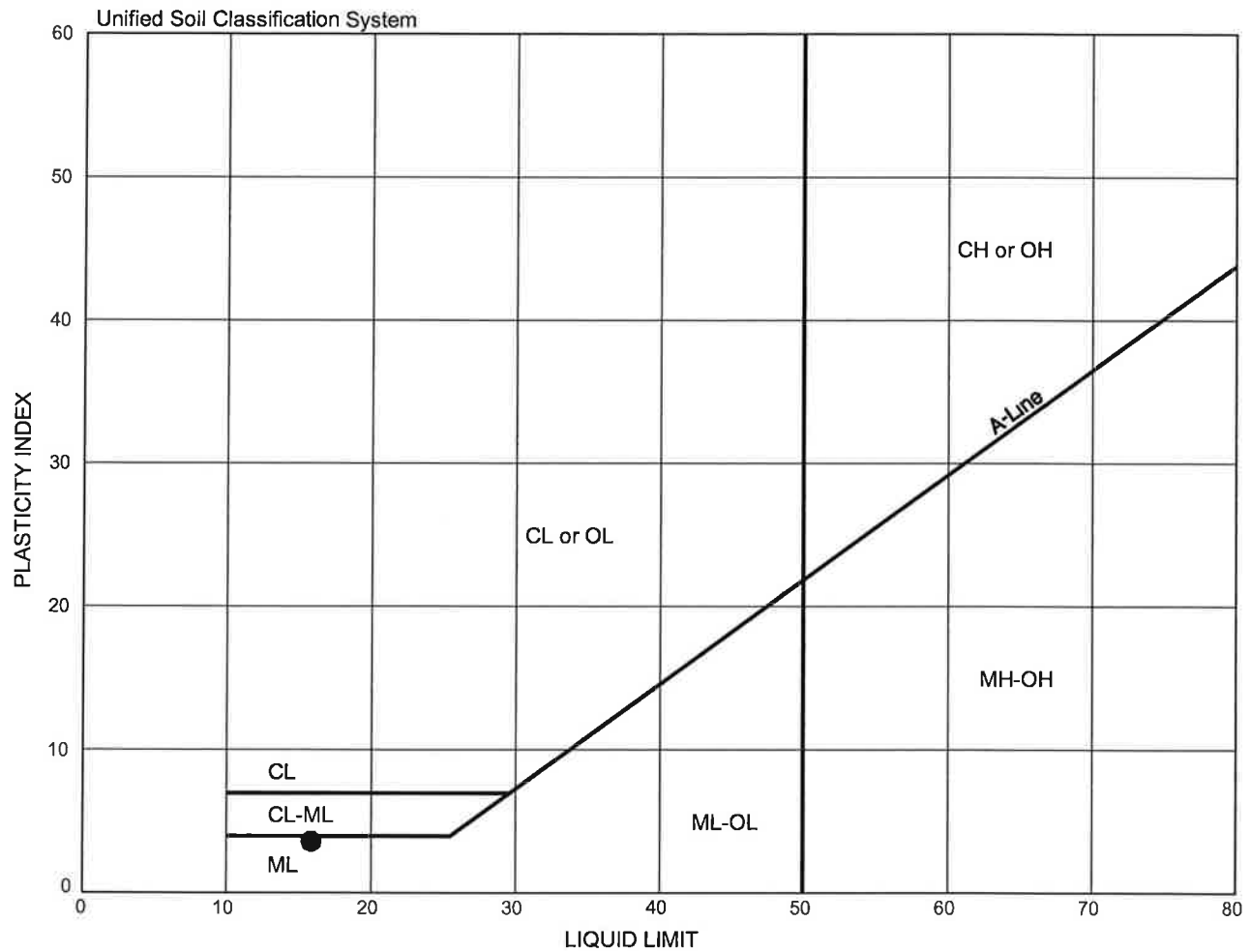
Figure 5A



Symbol	Location	Sample No.	Depth (m)	Elevation (m)	W	W _P	W _L	PI
●	BH1	S10	6.56	88.03	18.4	15.3	23.9	8.6
⊠	BH1	S12	9.61	84.98	12.0	13.3	15.6	2.3

Plasticity Chart

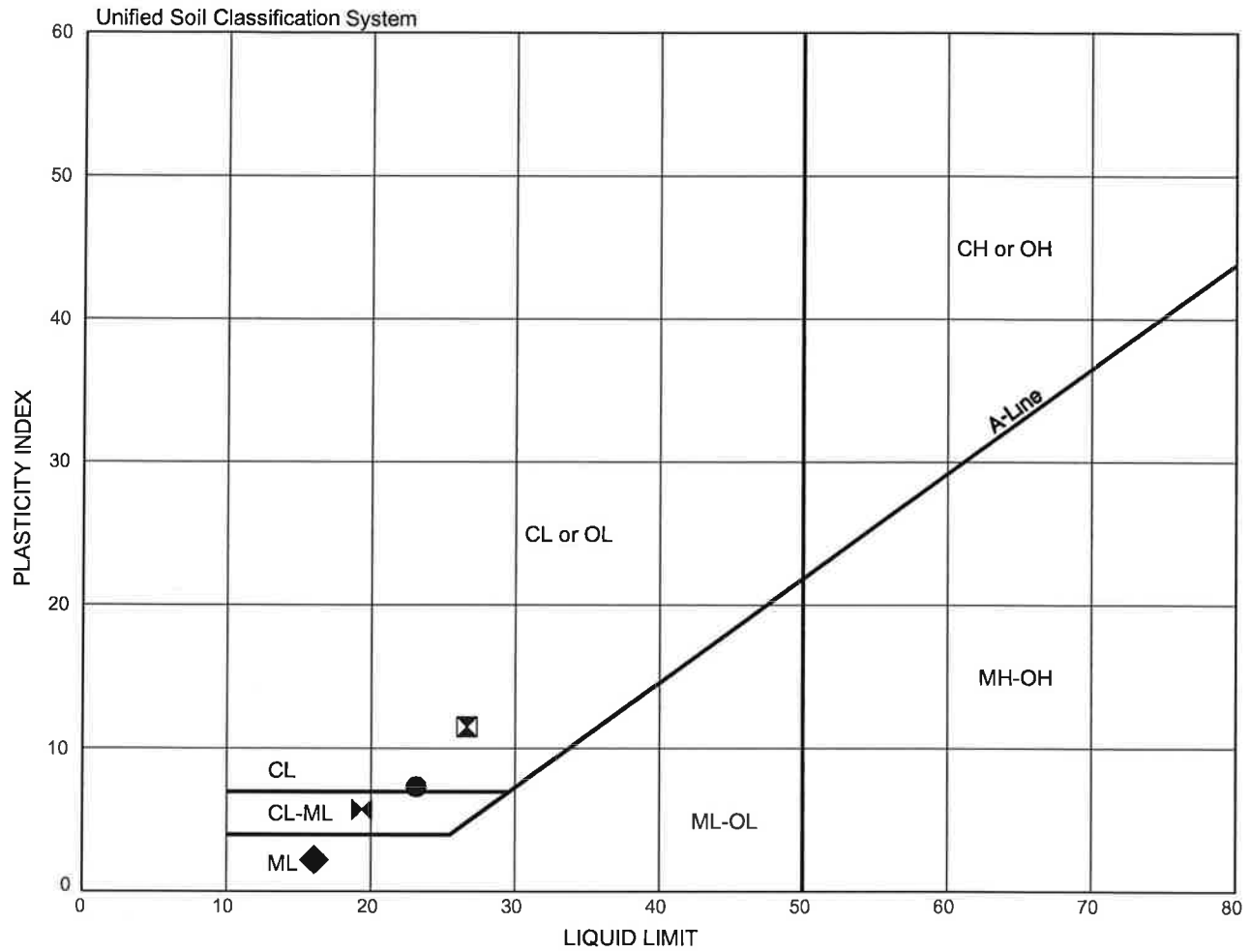
Figure 5B



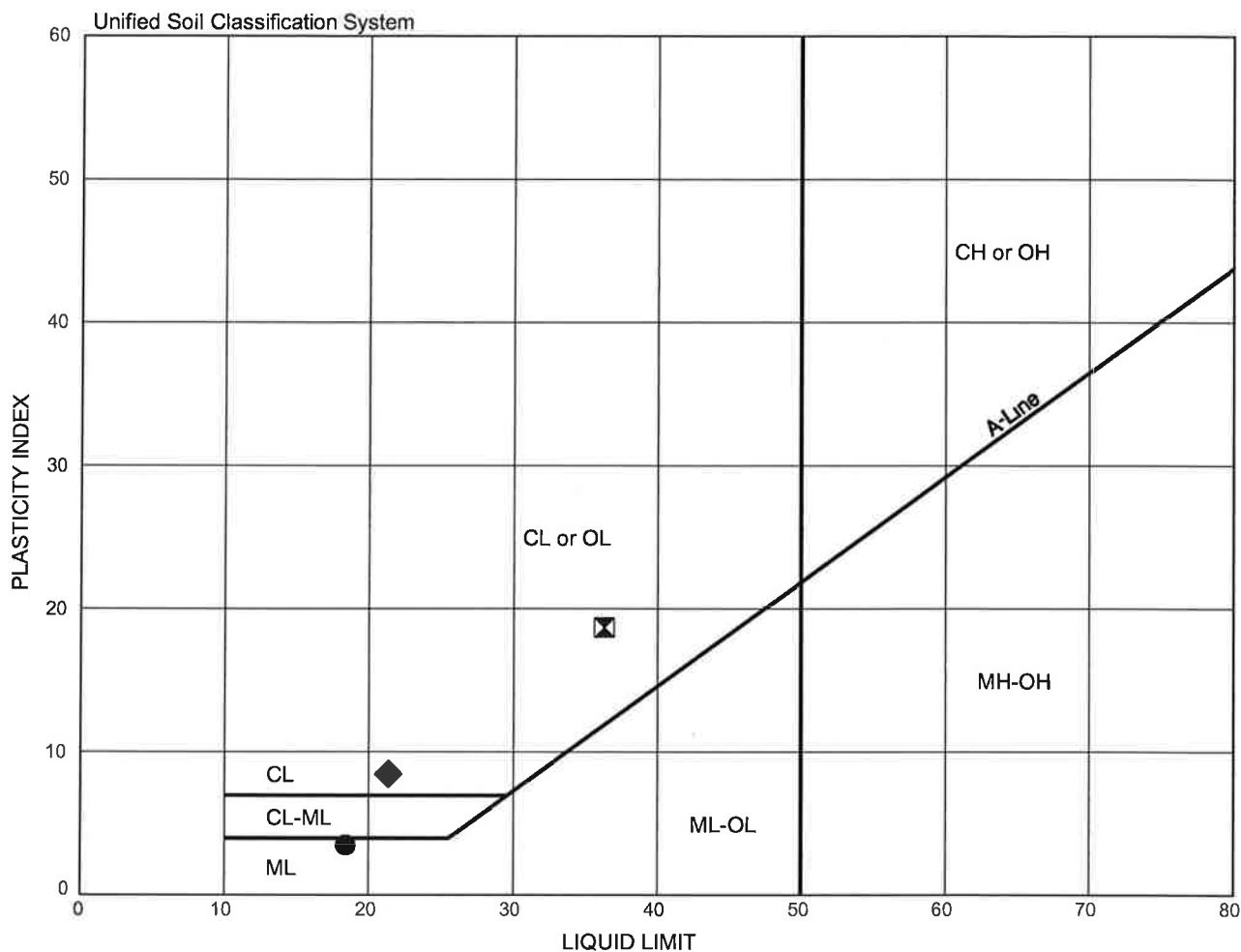
Symbol	Location	Sample No.	Depth (m)	Elevation (m)	W	W _P	W _L	PI
●	BH2	11	9.46	82.81	12.7	12.3	15.9	3.6

Plasticity Chart

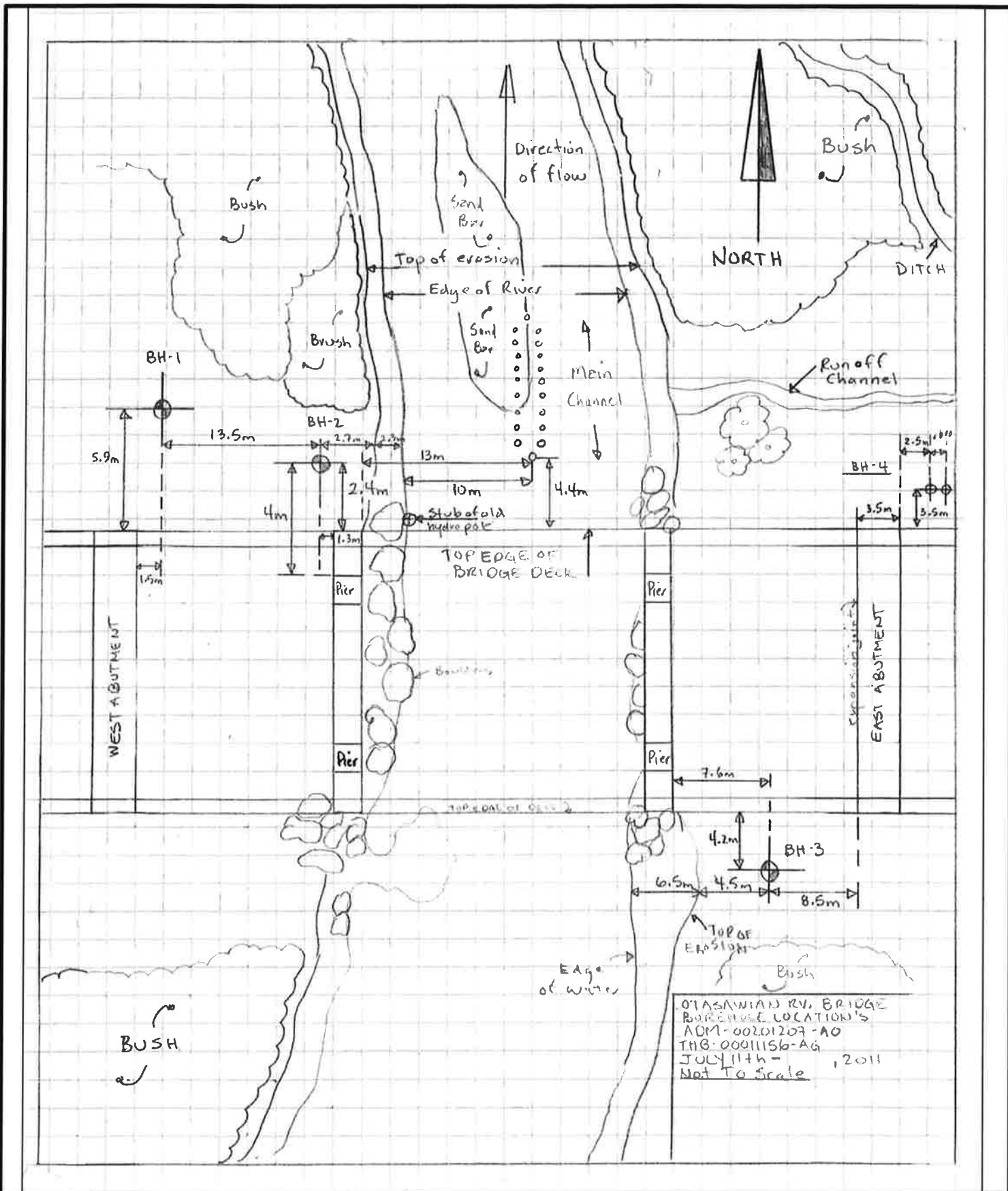
Figure 5C



Symbol	Location	Sample No.	Depth (m)	Elevation (m)	W	W _P	W _L	PI
●	BH3	S3	1.07	93.09	14.8	15.9	23.2	7.3
⊠	BH3	S6	3.41	90.75	16.8	15.2	26.7	11.5
◆	BH3	S9	5.66	88.50	12.0	13.9	16.1	2.2
⋈	BH3	S15	14.03	80.13	13.3	13.7	19.4	5.7



Symbol	Location	Sample No.	Depth (m)	Elevation (m)	W	W _P	W _L	PI
●	BH4	S4	1.84	97.11	13.1	14.9	18.4	3.5
⊠	BH4	S11A	7.78	91.17	33.2	17.6	36.3	18.7
◆	BH4	S11B	8.09	90.86	21.3	12.8	21.3	8.5



Notes:

1. REFERENCE: Field sketch prepared by exp personnel.



The new identity of Trow

BOREHOLE LOCATION & SURROUNDING FEATURES FIELD SKETCH

Geotechnical Investigation
Otawasian River Bridge - Site No. 39W-002
Ontario Ministry of Transportation
GWP No. 5236-06-00 / GEOCRE No. 42F-23

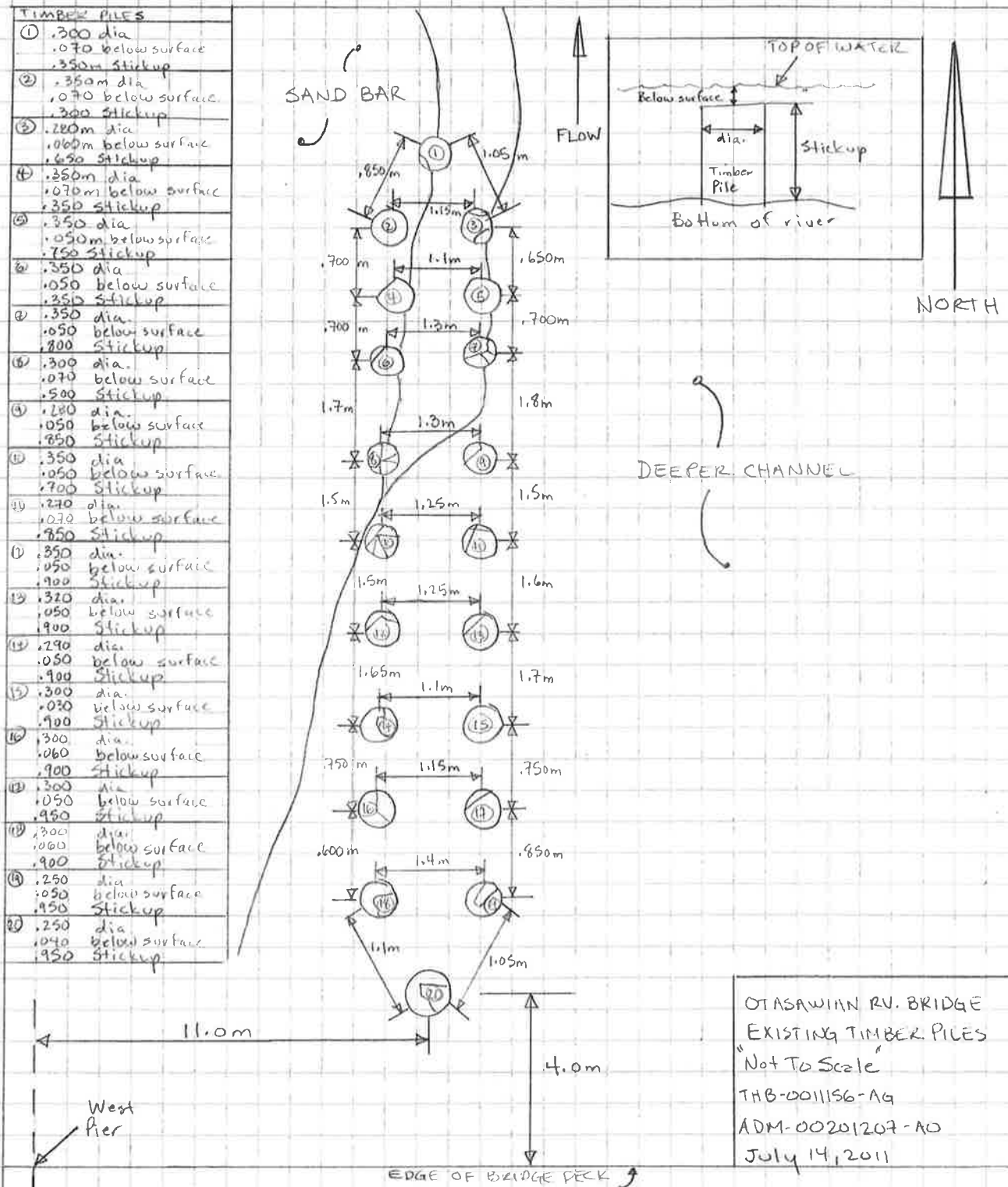
Thunder Bay, Ontario

FIGURE

6

PROJECT NO.:	ADM-00201207-AO
SCALE:	NOT TO SCALE
DRAWN BY:	DMT
CHECKED BY:	DG
DATE:	Aug. 25, 2011

OTASAWIAN RV. BRIDGE ADM-00201207-AO THB-0011156-A9
 July 14, 2011, EXISTING TIMBER PILE DETAILS



Notes:

1. REFERENCE: Field sketch prepared by exp personnel.



The new Identity of Trow

EXISTING TIMBER PILE FIELD SKETCH

Geotechnical Investigation
 Otasawian River Bridge - Site No. 39W-002
 Ontario Ministry of Transportation
 GWP No. 5236-06-00 / GEOCREs No. 42F-23

FIGURE

7

Thunder Bay, Ontario

PROJECT NO.: ADM-00201207-AO

SCALE: NOT TO SCALE

DRAWN BY: DMT

CHECKED BY: DG

DATE: Aug. 25, 2011

Appendix B – Photographs

Photograph 1: Looking west at the bridge.
East pier shown.



Photograph 2: Looking southwest under the
bridge. East and west piers shown. BH2
location is located across river on right side
(north) of bridge.

Photograph 3: Looking north from on top of
bridge. The existing timber piles (11 or 20) are
noted in river.



Photograph 4: Looking south from on top of bridge.



Photograph 5: Looking east at east pier. BH3 location located on right side (south).

Photograph 6: Looking south at BH4 (located on east side of bridge and north side of Hwy 11).



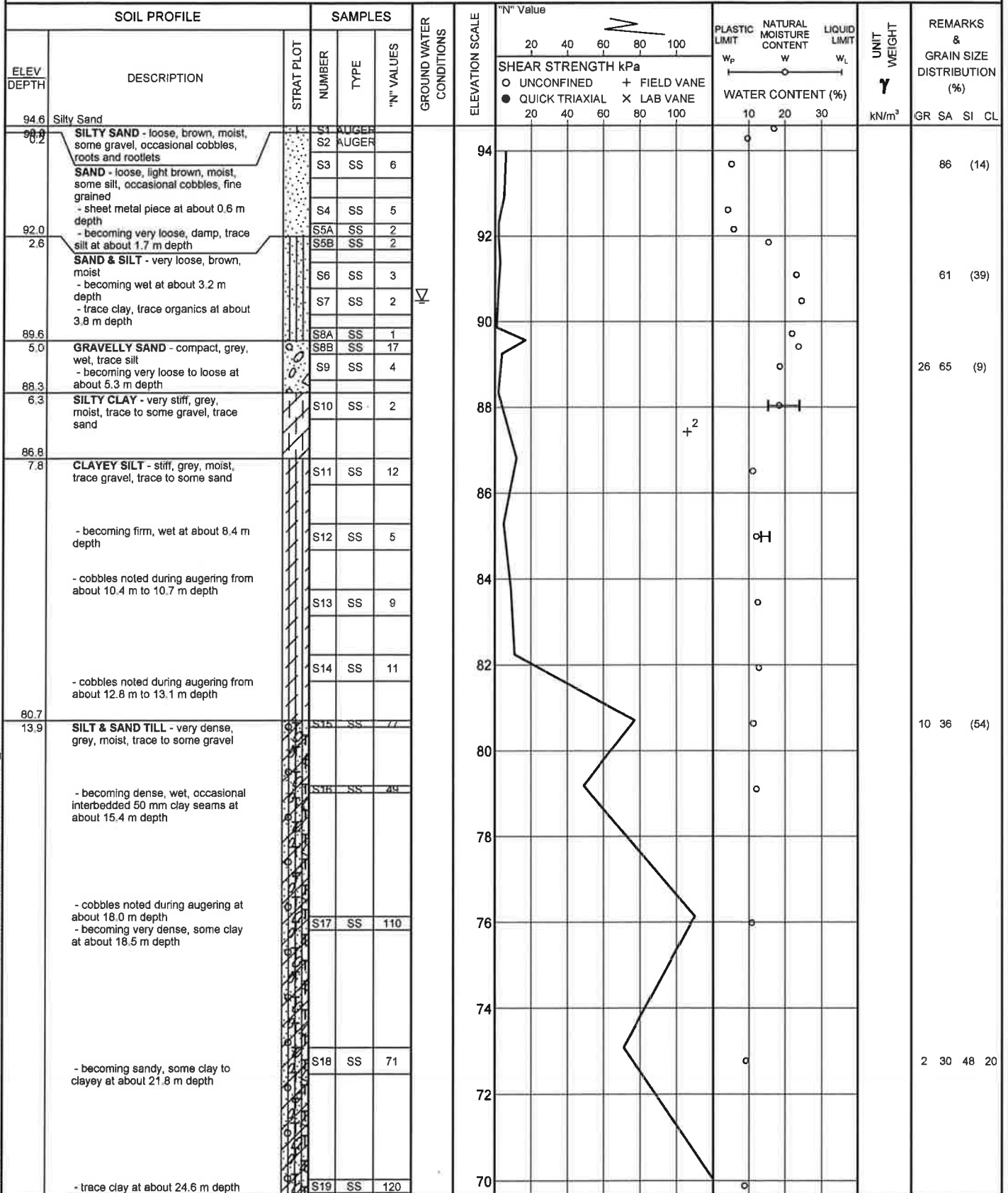
Appendix C – Borehole Logs

RECORD OF BOREHOLE No BH1

1 OF 2

METRIC

W.P. GWP No. 5236-06-00 LOCATION Ottasawian River Bridge (Site No. 39W-002) - GEOCRETS No. 42F-23 ORIGINATED BY EF
 DIST Twp Kohler HWY 11 BOREHOLE TYPE CME 55 Trailer Mount / HSA COMPILED BY DMT
 DATUM Local DATE 7.13.11 - 7.17.11 CHECKED BY AM



Continued Next Page

+³, ×³: Numbers refer to Sensitivity ○ 3% STRAIN AT FAILURE

ON MOT F-11156-AG - OTTASAWIAN RIVER BRIDGE - MTO - BRAMPTON.GPJ ON MOT.GDT 10/18/11

RECORD OF BOREHOLE No BH1

2 OF 2

METRIC

W.P. GWP No. 5236-06-00 LOCATION Otasawian River Bridge (Site No. 39W-002) - GEOCRETS No. 42F-23 ORIGINATED BY EF
 DIST Twp Kohler HWY 11 BOREHOLE TYPE CME 55 Trailer Mount / HSA COMPILED BY DMT
 DATUM Local DATE 7.13.11 - 7.17.11 CHECKED BY AM

SOIL PROFILE		SAMPLES			GROUND WATER CONDITIONS	ELEVATION SCALE	"N" Value		PLASTIC LIMIT w _p	NATURAL MOISTURE CONTENT w	LIQUID LIMIT w _L	UNIT WEIGHT γ	REMARKS & GRAIN SIZE DISTRIBUTION (%)
ELEV DEPTH	DESCRIPTION	STRAT PLOT	NUMBER	TYPE	"N" VALUES		20 40 60 80 100	20 40 60 80 100					
	SILT & SAND TILL continued												
	- cobbles noted during augering at about 26.2 m depth												
			S20	SS	139								
			S21	SS	107								
			S22	SS	138								
			S23	AUGER									
59.0													
35.6	End of Borehole - refusal to auger and SPT		S24	SS	119								
	Notes: - borehole caved below about 7.0 m depth - borehole backfilled with cuttings to about 2.1 m depth - borehole backfilled with bentonite between about 0.3 m and 2.1 m depth - borehole backfilled with cuttings from ground surface to 0.3 m depth												

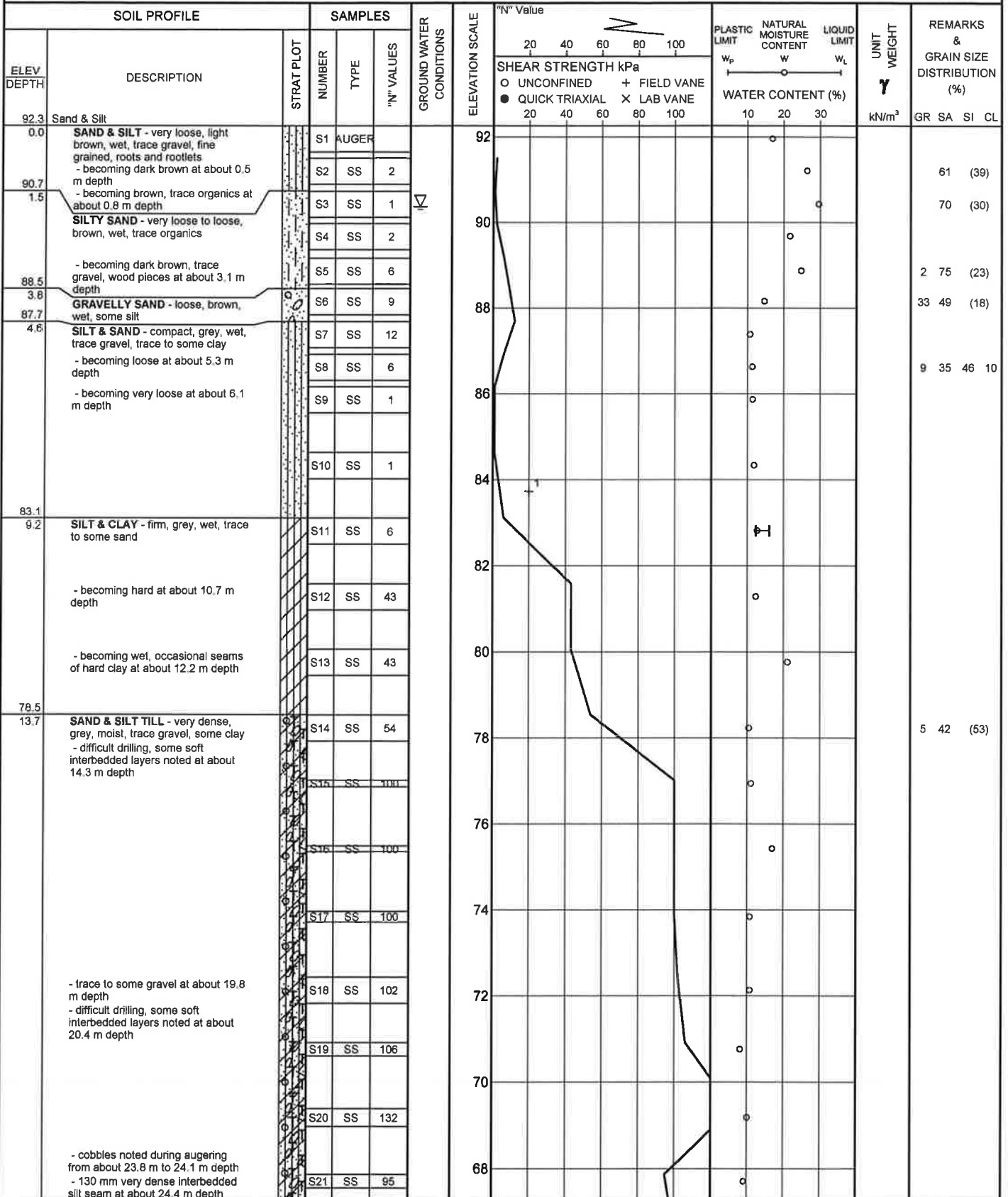
ON_MOT_F-11156-AG - OTASAWIAN RIVER BRIDGE - MTO - BRAMPTON GPJ ON_MOT_GDT 10/18/11

RECORD OF BOREHOLE No BH2

1 OF 2

METRIC

W.P. GWP No. 5236-06-00 LOCATION Ottawian River Bridge (Site No. 39W-002) - GEOCRETS No. 42F-23 ORIGINATED BY EF
 DIST Twp Kohler HWY 11 BOREHOLE TYPE CME 55 Trailer Mount / HSA / NQ COMPILED BY DMT
 DATUM Local DATE 7.12.11 - 7.14.11 CHECKED BY AM



Continued Next Page

+ 3, X 3: Numbers refer to Sensitivity ○ 3% STRAIN AT FAILURE

ON MOT F-11156-AG - OTTAWIAN RIVER BRIDGE - MTO - BRAMPTON GPJ ON MOT GDT 10/18/11

RECORD OF BOREHOLE No BH2

2 OF 2

METRIC

W.P. GWP No. 5236-06-00 LOCATION Otasawian River Bridge (Site No. 39W-002) - GEOCRETS No. 42F-23 ORIGINATED BY EF
 DIST Twp Kohler HWY 11 BOREHOLE TYPE CME 55 Trailer Mount / HSA / NQ COMPILED BY DMT
 DATUM Local DATE 7.12.11 - 7.14.11 CHECKED BY AM

SOIL PROFILE		SAMPLES			GROUND WATER CONDITIONS	ELEVATION SCALE	"N" Value		PLASTIC LIMIT W _p	NATURAL MOISTURE CONTENT W	LIQUID LIMIT W _L	UNIT WEIGHT γ kN/m ³	REMARKS & GRAIN SIZE DISTRIBUTION (%) GR SA SI CL
ELEV. DEPTH	DESCRIPTION	STRAT PLOT	NUMBER	TYPE	"N" VALUES		20 40 60 80 100	20 40 60 80 100					
	SAND & SILT TILL continued		S22	SS	101								
			S23	SS	83								
			S24	SS	77								
			S25	SS	100								
			S26	SS	77								
			S27	SS	78								
54.7	- refusal to euger and SPT at about 37.5 m depth												
37.5	BEDROCK - medium strong, severely fractured (RQD = 18%), greenish grey, coarse grained, pink stringers, some quartz pockets and stringers, recovery = 89% - becoming severely fractured to fractured (RQD = 50%), recovery = 100% at about 38.7 m depth - becoming fractured (RQD = 64%), recovery = 100% at about 39.8 m depth		S28	CORE									
			S29	CORE									
51.4			S30	CORE									
40.9	End of Borehole												
	Notes: - borehole backfilled with cuttings to about 2.0 m depth - borehole backfilled with bentonite between about 0.3 m and 2.0 m depth - borehole backfilled with cuttings from ground surface to 0.3 m depth												

ON_MOT_F-11156-AG - OTASAWIAN RIVER BRIDGE - MTO - BRAMPTON GPJ_ON_MOT_GDT_10/18/11

RECORD OF BOREHOLE No BH3

1 OF 1

METRIC

W.P. GWP No. 5236-06-00 LOCATION Ottawa River Bridge (Site No. 39W-002) - GEOCRETS No. 42F-23 ORIGINATED BY EF
 DIST Twp Kohler HWY 11 BOREHOLE TYPE CME 55 Trailer Mount / HSA / NQ COMPILED BY DMT
 DATUM Local DATE 7.16.11 - 7.17.11 CHECKED BY AM

SOIL PROFILE			SAMPLES			GROUND WATER CONDITIONS	ELEVATION SCALE	"N" Value			PLASTIC LIMIT w _p	NATURAL MOISTURE CONTENT w	LIQUID LIMIT w _L	UNIT WEIGHT γ kN/m ³	REMARKS & GRAIN SIZE DISTRIBUTION (%)
ELEV DEPTH	DESCRIPTION	STRAT PLOT	NUMBER	TYPE	"N" VALUES			20	40	60	80	100			
94.2	Sand		S1 AUGER				94								
90.2	SAND - very loose, brown, damp, trace gravel, some silt, roots and rootlets		S2 AUGER				92								
	SILTY CLAY - firm, brown, moist, trace gravel, trace sand - becoming brown to grey, trace organics in upper 2.3 m at about 0.8 m depth - becoming soft, moist to wet at about 2.3 m depth - becoming firm at about 3.1 m depth - becoming soft, varved, fine grey sand seams at about 3.8 m depth		S3 SS		5										
			S4 SS		6										
			S5 SS		1										
			S6 SS		7										
89.6			S7 SS		2		90								
4.6	CLAYEY SILT - firm to stiff, grey, wet, trace gravel, trace to some sand - becoming soft, some gravel, sandy at about 6.1 m depth - becoming soft at about 7.6 m depth		S8 SS		6		88								19 27 44 10
			S9 SS		9										
			S10 SS		2										
			S11 SS		3		86								
			S12 SS		2										
			S13 SS		4		84								
			S14 SS		5		82								11 30 46 13
			S15 SS		33		80								
78.9			S16A SS		8		78								
15.4	SAND - loose, grey, wet, trace to some silt, fine grained SILT - compact, grey, wet, trace gravel, trace sand, some clay - 80 mm seam of hard grey clay at about 16.8 m depth GRAVELLY SAND - compact, grey, wet, trace silt		S16B SS		14										
77.0			S17A SS		24		76								30 61 (9)
17.2			S17B SS		18										
75.9			S18 SS		100										36 53 (11)
18.3	SAND & GRAVEL - very dense, grey, wet, some silt, some cobbles at about 18.3 m depth		S19 CORE												
74.8	BOULDER - about 300 mm		S20 SS		193										23 47 (30)
74.7	SILTY SAND TILL - very dense, grey, moist, gravelly														
20.0	End of Borehole - refusal to SPT														

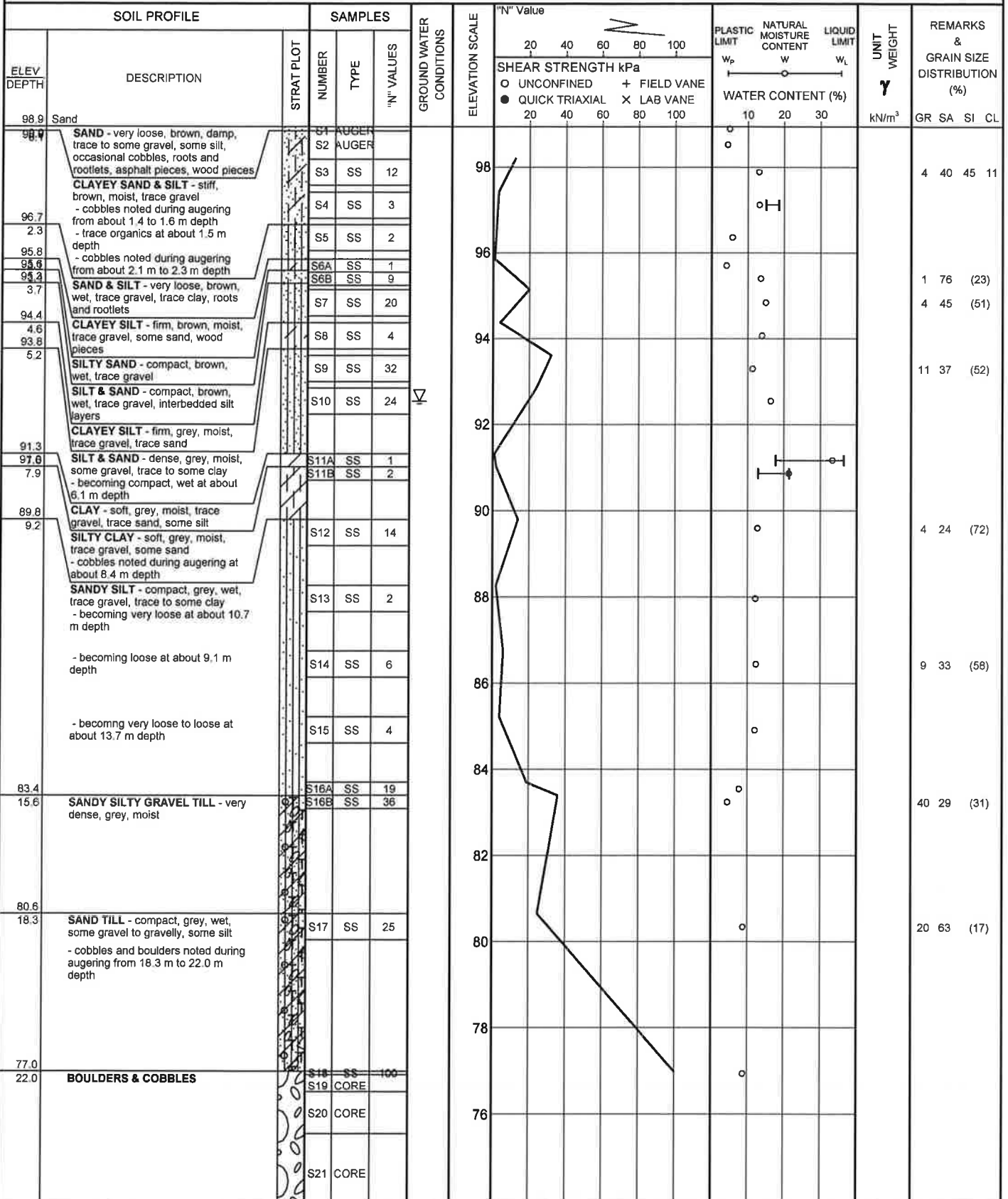
Notes:
 - borehole backfilled with cuttings to
about 2.0 m depth
 - borehole backfilled with bentonite
between about 0.3 m and 2.0 m
depth
 - borehole backfilled with cuttings
from ground surface to 0.3 m depth

RECORD OF BOREHOLE No BH4

1 OF 2

METRIC

W.P. GWP No. 5236-06-00 LOCATION Otasawian River Bridge (Site No. 39W-002) - GEOCREs No. 42F-23 ORIGINATED BY EF
DIST Twp Kohler HWY 11 BOREHOLE TYPE CME 55 Trailer Mount / HSA / NQ COMPILED BY DMT
DATUM Local DATE 7.18.11 - 7.20.11 CHECKED BY AM



Continued Next Page

+³, X³: Numbers refer to Sensitivity ○³% STRAIN AT FAILURE

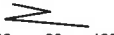

ON MOT F-11156-AG - OTASAWIAN RIVER BRIDGE - MTO - BRAMPTON, GPJ ON MOT GDT 10/18/11

RECORD OF BOREHOLE No BH4

2 OF 2

METRIC

W.P. GWP No. 5236-06-00 LOCATION Otasawan River Bridge (Site No. 39W-002) - GEOCRETS No. 42F-23 ORIGINATED BY EF
 DIST Twp Kohler HWY 11 BOREHOLE TYPE CME 55 Trailer Mount / HSA / NQ COMPILED BY DMT
 DATUM Local DATE 7.18.11 - 7.20.11 CHECKED BY AM

SOIL PROFILE			SAMPLES			GROUND WATER CONDITIONS	ELEVATION SCALE	<div>"N" Value </div>	<div>PLASTIC LIMIT NATURAL MOISTURE CONTENT LIQUID LIMIT </div>	UNIT WEIGHT <div>γ</div>	REMARKS & GRAIN SIZE DISTRIBUTION (%)
ELEV DEPTH	DESCRIPTION	STRAT PLOT	NUMBER	TYPE	"N" VALUES						
73.7 25.2	End of Borehole	1/1					72				
	<div>Notes: - borehole caved below about 11.1 m depth - borehole backfilled with cuttings to about 7.0 m depth - borehole backfilled with bentonite between about 5.8 m and 7.0 m depth - borehole backfilled with cuttings to about 1.5 m depth - borehole backfilled with bentonite between about 0.3 m and 1.5 m depth - borehole backfilled with cuttings from ground surface to 0.3 m depth</div>										

ON_MOT F-11156-AG - OTASAWAN RIVER BRIDGE - MTO - BRAMPTON GPJ ON_MOT.GDT 10/18/11