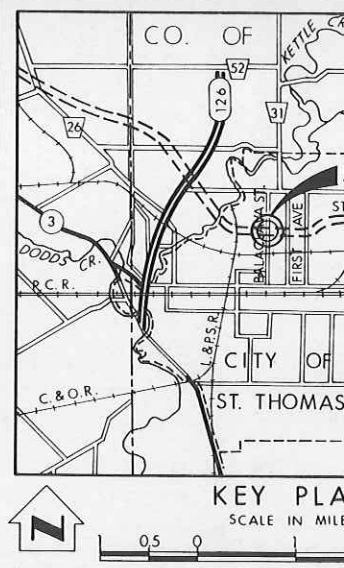
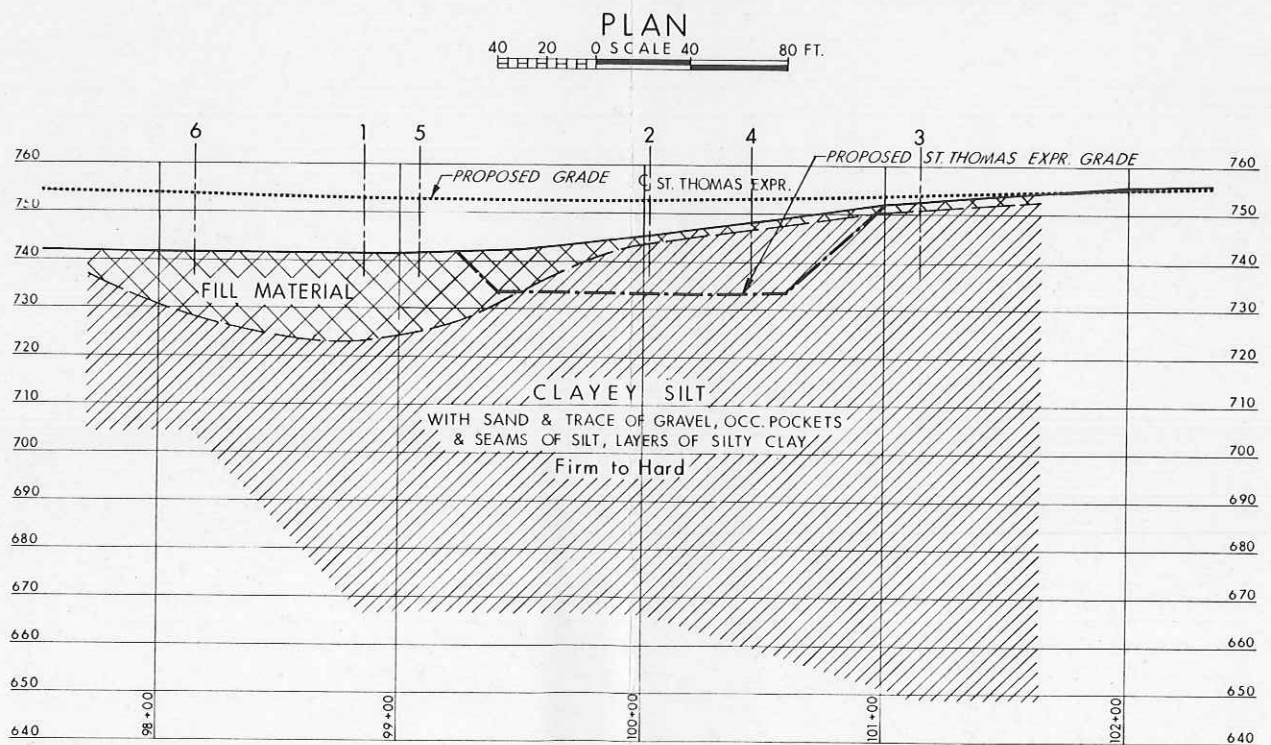
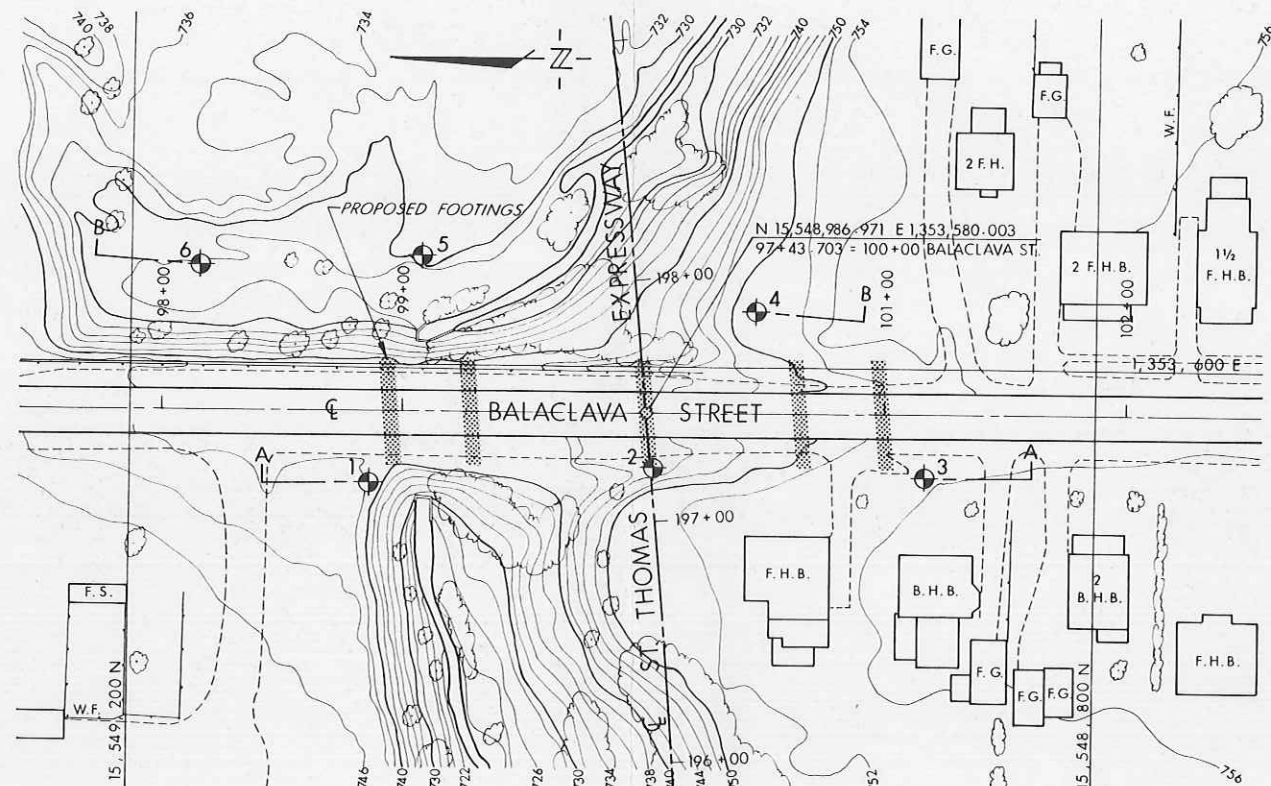


SECTIONS
20 10 0 SCALE 20 40 FT.



LEGEND

- Bore Hole
- Cone Penetration Test
- Bore Hole & Cone
- Water Levels established by field investigation
- Water Level not established by field investigation
- Bore Hole No. 1

| NO. | ELEVATION | CO- NORTH |
|-----|-----------|-----------|
| 1 | 742.9 | 15,549, |
| 2 | 745.6 | 15,548, |
| 3 | 755.6 | 15,548, |
| 4 | 750.5 | 15,548, |
| 5 | 731.1 | 15,549, |
| 6 | 728.6 | 15,549, |

NOTE
The boundaries between soil strata have been determined from Bore Hole locations. Between Bore Holes the boundaries are inferred from geological evidence and may be subject to change.

REVISIONS

| NO. | DATE | BY | DESCRIPTION |
|-----|------|----|-------------|
| | | | |
| | | | |
| | | | |

DEPARTMENT OF TRANSPORTATION
DESIGN SERVICES BRANCH

BALACLAVA ST.

HIGHWAY NO. ST. THOMAS EXPRESSWAY
CO. ELGIN
+W.P. CITY OF ST. THOMAS LOT

BORE HOLE LOCATIONS

SUBWD. P.P. CHECKED P.P. W.P. NO. 88 - 69 -
DRAWN S.R. CHECKED S.R. JOB NO. 71 - 1106.
DATE AUGUST 27, 1971 SITE NO.
APPROVED [Signature] CONT. NO.
PRINCIPAL FOUNDATION ENGINEER