

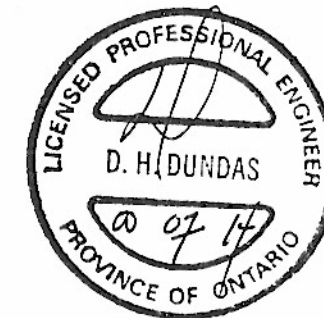
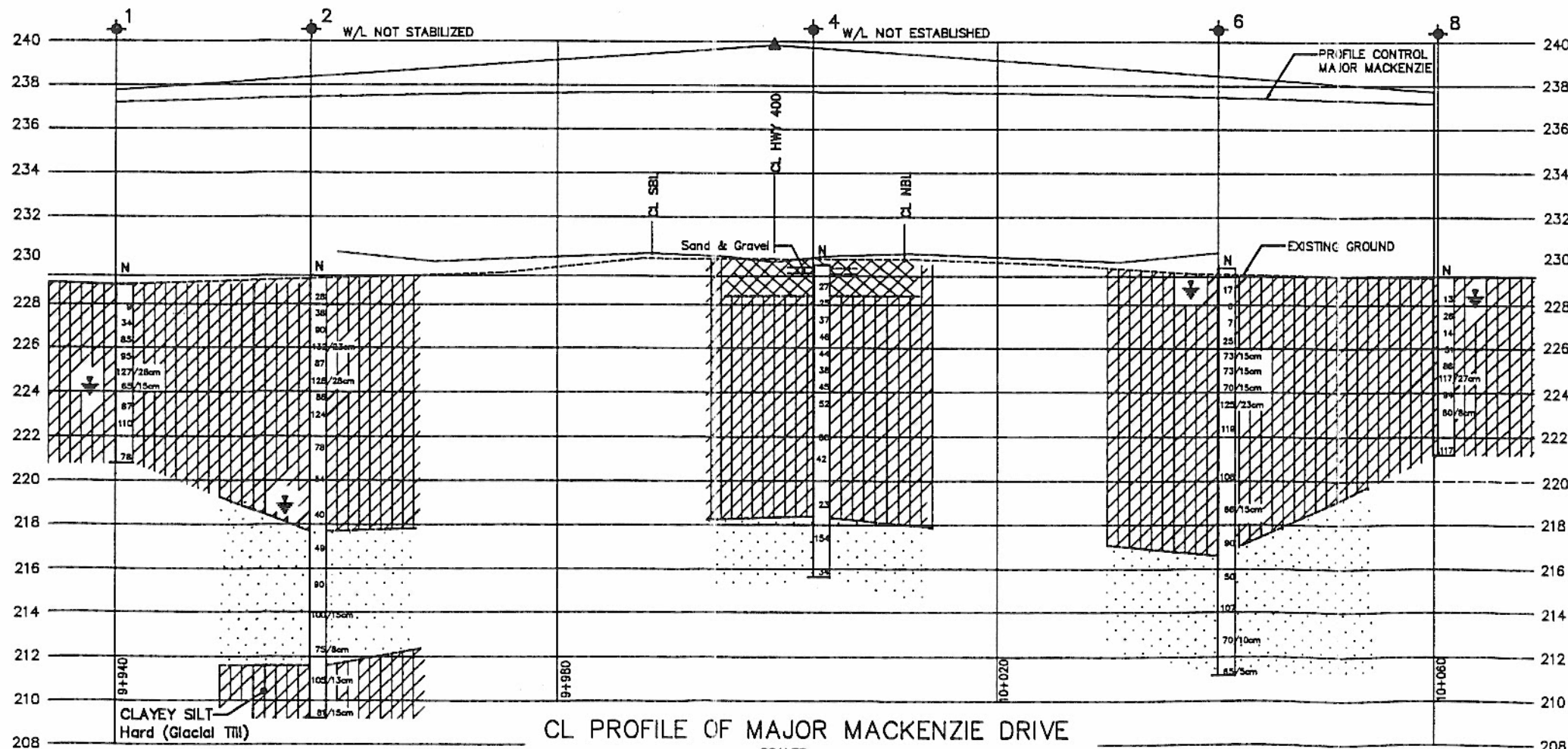
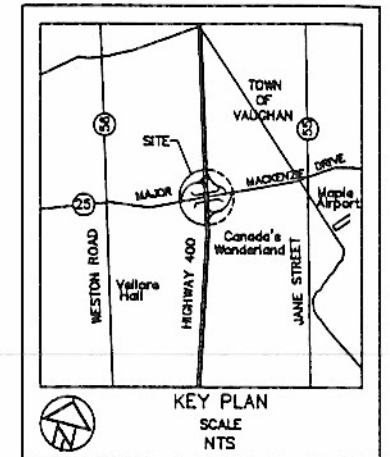
METRIC
DIMENSIONS ARE IN METRES
AND/OR MILLIMETRES UNLESS
OTHERWISE SHOWN. STATIONS
IN KILOMETRES + METRES

CONT No
WP No 474-91-00



MAJOR MACKENZIE DRIVE
BORE HOLE LOCATIONS & SOIL STRATA

SHEET



NOTE:
For Sections A-A, B-B & C-C
Refer to Dwg No 4749100-B

See Dwg No 4749100-B for Soil
Stratigraphy Legend

LEGEND

- Bore Hole
- ⊕ Dynamic Cone Penetration Test (Cone)
- ⊙ Bore Hole & Cone
- N Blows/0.3m (Std. Pen. Test, 475 J/Blow)
- CONE Blows/0.3m (60° Cone, 475 J/Blow)
- ↓ W.L. at time of investigation 1999 03

No	ELEVATION	COORDINATES	
		NORTHING	EASTING
1	228.9	4856312.0	300830.0
2	229.3	4856317.0	300850.0
3	229.0	4856341.0	300847.0
4	229.8	4856314.5	300895.0
5	230.2	4856349.0	300889.0
6	229.7	4856337.0	300930.0
7	229.5	4856357.0	300927.0
8	229.3	4856346.5	300948.5

NOTE

The boundaries between soil strata have been established only at Bore Hole locations. Between Bore Holes the boundaries are assumed from geological evidence.

NOTE: The complete foundation investigation and design report for this project and other related documents may be examined at the Engineering Materials Office, Downsview. Information contained in this report and related documents is specifically excluded in accordance with the conditions of Section 2.01 of OPS Gen. Cond.

REV	DATE	BY	DESCRIPTION
1	2000 07 10	DD	DATE 2000 07 10 SITE 37-128
2	2000 07 10	DD	DWG 4749100-A

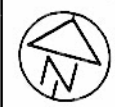
Geocres No 30M13-143
HWY No 400 DIST CR
SUBM'D BB CHECKED DATE 2000 07 10 SITE 37-128
DRAWN DT CHECKED DWG 4749100-A

METRIC
DIMENSIONS ARE IN METRES
AND/OR MILLIMETRES UNLESS
OTHERWISE SHOWN. STATIONS
IN KILOMETRES + METRES

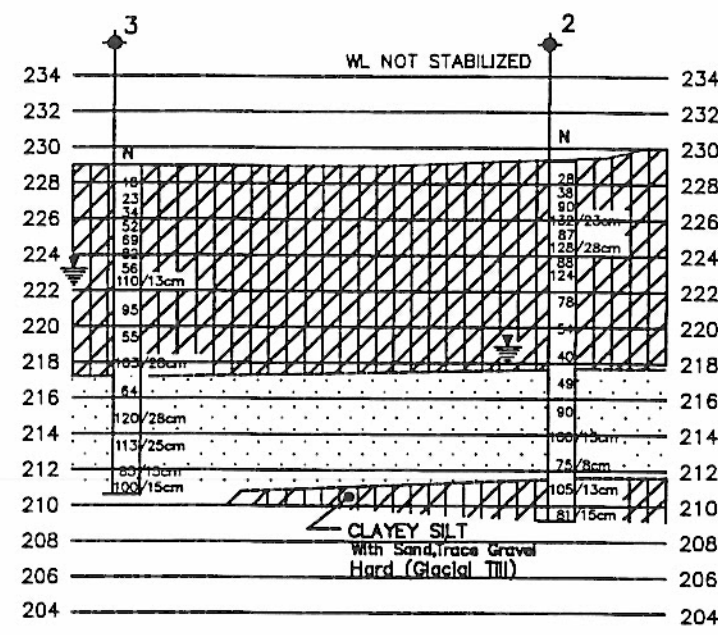
CONT No
WP No 474-91-00

MAJOR MACKENZIE DRIVE

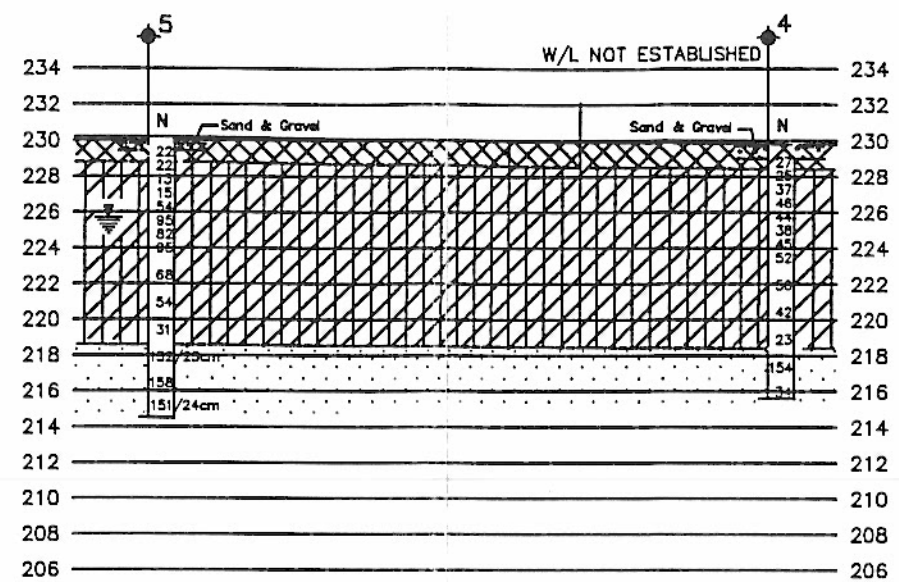
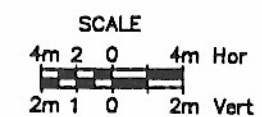
BORE HOLE LOCATIONS & SOIL STRATA



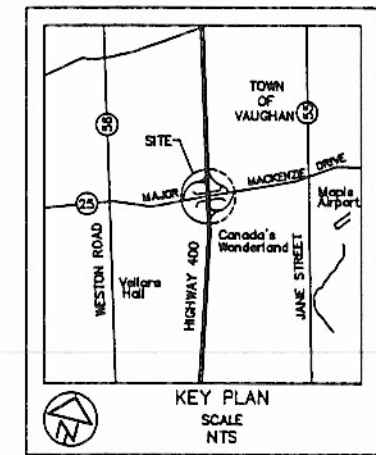
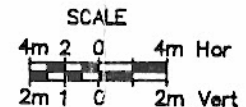
SHEET



SECTION A-A



SECTION B-B



LEGEND

- Bore Hole
- Dynamic Cone Penetration Test (Cone)
- Bore Hole & Cone
- N Blows/0.3m (Std. Pen. Test, 475 J/Blow)
- CONE Blows/0.3m (60° Cone, 475 J/Blow)
- W.L. at time of investigation 1999 03

No	ELEVATION	COORDINATES	
		NORTHING	EASTING
1	228.9	4856312.0	300830.0
2	229.3	4856317.0	300850.0
3	229.0	4856341.0	300847.0
4	229.8	4856314.5	300895.0
5	230.2	4856349.0	300889.0
6	229.7	4856337.0	300930.0
7	229.5	4856357.0	300927.0
8	229.3	4856346.5	300948.5

NOTE

The boundaries between soil strata have been established only at Bore Hole locations. Between Bore Holes the boundaries are assumed from geological evidence.

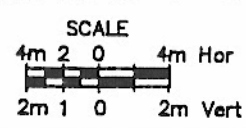
NOTE: The complete foundation investigation and design report for this project and other related documents may be examined at the Engineering Materials Office, Downsview. Information contained in this report and related documents is specifically excluded in accordance with the conditions of Section GC 2.01 of OPS Gen. Cond.

DATE	BY	DESCRIPTION
2000 07 10	DT	Geocres No 30M13-143
2000 07 10	DT	HWY No 400
2000 07 10	DT	SUBWD BB CHECKED
2000 07 10	DT	DATE 2000 07 10
2000 07 10	DT	SITE 37-128
2000 07 10	DT	DWG 4749100-B

REF No: B-73-400-36

NOTE:
For Plan & Profile Refer to
Dwg No 4749100-A

SECTION C-C



Soil Stratigraphy Legend

- SAND (FILL)
Trace Gravel
Trace Silt
Compact
- CLAYEY SILT
Trace Gravel
Trace / Some Sand
Firm to Hard
- SAND TO SILTY SAND
Dense to Very Dense

