

**METRIC**  
DIMENSIONS ARE IN METRES AND/OR  
MILLIMETRES UNLESS OTHERWISE SHOWN.  
STATIONS IN KILOMETRES + METRES.

CONT No.  
GWP No. 2368-09-00

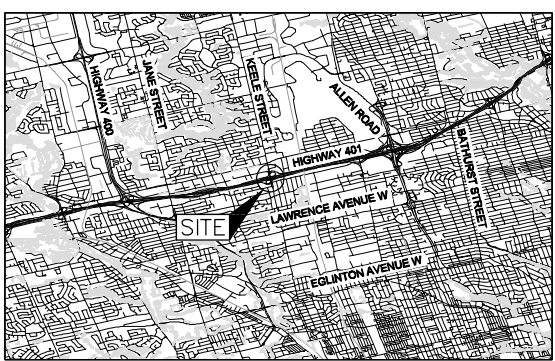


KEELE STREET UNDERPASS  
HIGHWAY 401 EBC REHABILITATION  
BOREHOLE LOCATIONS AND SOIL STRATA

SHEET



**Golder Associates Ltd.**  
MISSISSAUGA, ONTARIO, CANADA



KEY PLAN

SCALE

1.8 0 1.8 3.6 km

LEGEND

- Borehole - Current Investigation
- Borehole - Previous Investigation Approx. Location
- Seal
- Piezometer
- N Standard Penetration Test Value
- 16 Blows/0.3m unless otherwise stated (Std. Pen. Test, 475 j/blow)
- WL in piezometer, measured on Oct. 20, 2010
- WL upon completion of drilling

BOREHOLE CO-ORDINATES			
No.	ELEVATION	NORTHING	EASTING
1	178.8	4842588.8	306281.9
2	177.8	4842459.7	306354.5
2010-01	179.5	4842588.7	306315.7
2010-02	172.2	4842539.0	306289.7
2010-03	172.5	4842502.5	306327.7
2010-04	178.0	4842462.1	306338.6

NOTES

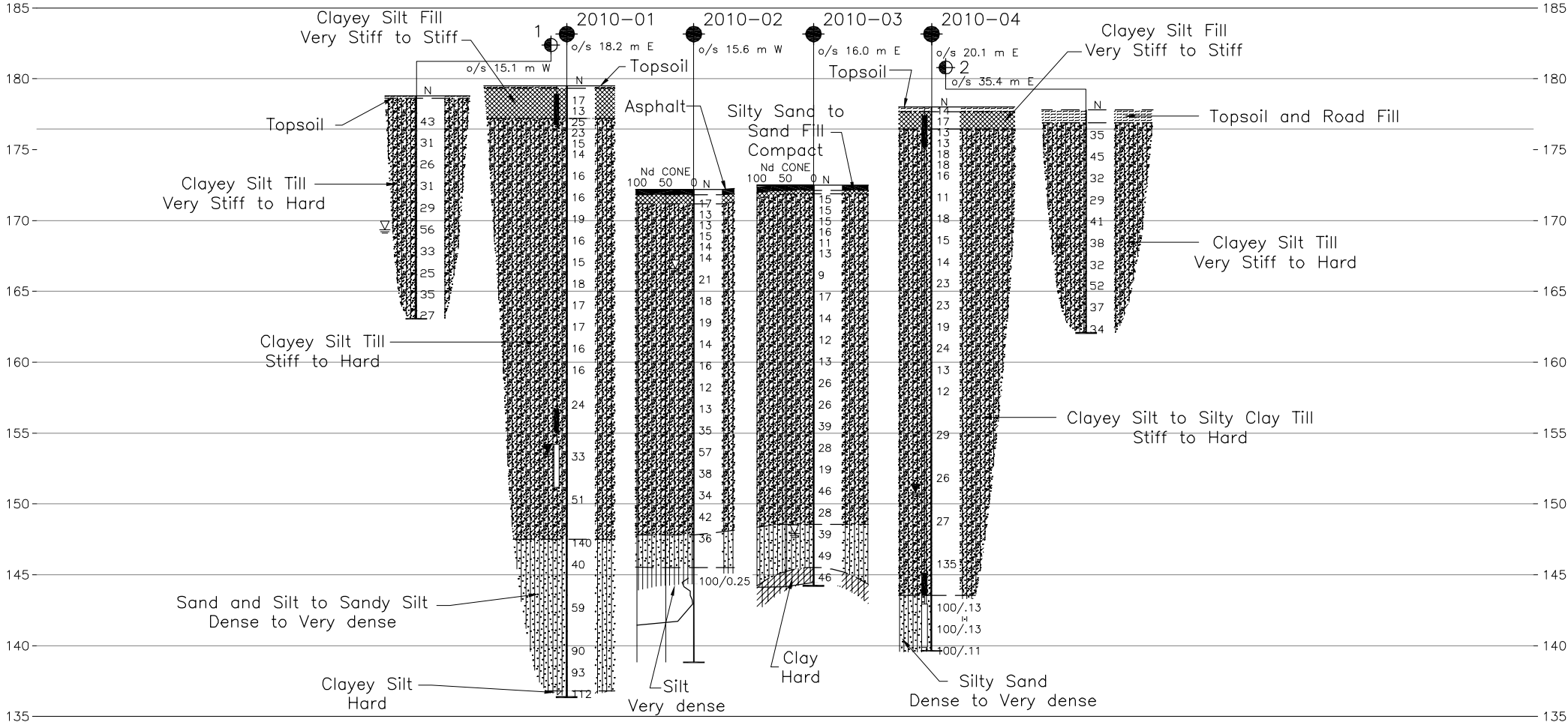
This drawing is for subsurface information only. The proposed structure details/works are shown for illustration purposes only and may not be consistent with the final design configuration as shown elsewhere in the Contracts Documents.

The boundaries between soil strata have been established only at borehole locations. Between boreholes the boundaries are assumed from geological evidence.

The complete Foundation Investigation and Design Report for this project and other related documents may be examined at the Materials Engineering and Research Office, Downsview. Information contained in this report and related documents is specifically excluded in accordance with Section GC 2.01 of OPS General Conditions.

REFERENCE

Base plans provided in digital format from URS, drawing file nos. Hwy401\_bgd\_Keele.dwg and Hwy401\_contours\_Keele.dwg, received October 21, 2010



SECTION A-A'

HORIZONTAL SCALE

20 0 20 40 m

4 0 4 8 m

HORIZONTAL SCALE