

**EXP Services Inc.**  
*The new identity of Trow Associates*



LEGEND

Approx. Borehole Location (Current Investigation)

BH No.	ELEV.	CO-ORDINATES	
		NORTH	EAST
1	282.5	4 997 654	319 602
2	298.7	4 997 657	319 636
3	292.9	4 997 664	319 657
4	296.6	4 997 656	319 685
5	283.0	4 997 652	319 720
6	280.2	4 997 545	319 724
7	297.8	4 997 612	319 633
8	294.6	4 997 574	319 673
9	295.7	4 997 558	319 687
10	283.9	4 997 615	319 716

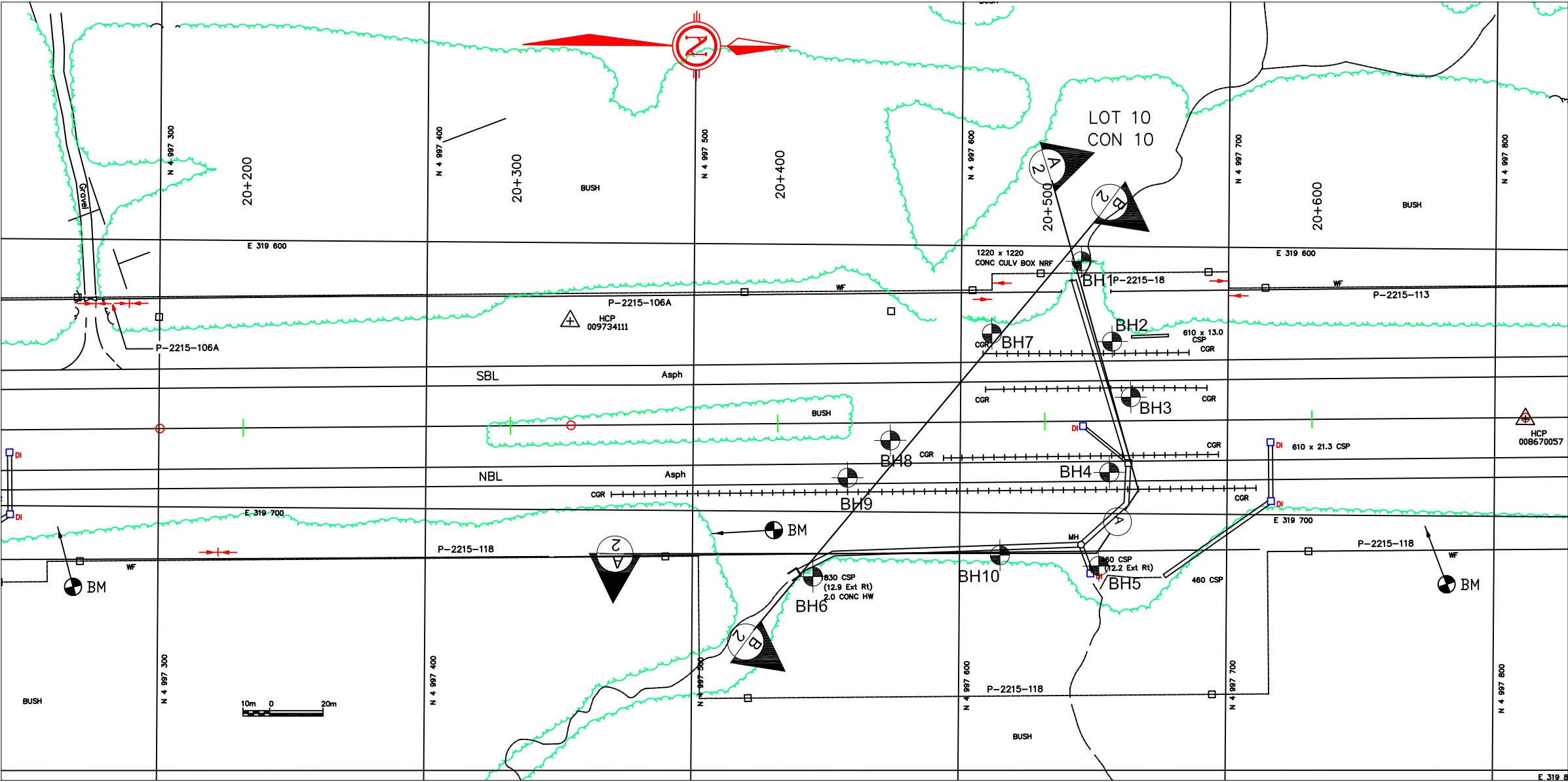
NOTE

This drawing is for subsurface information only. The proposed structure details/works are shown for illustration purposes only and may not be consistent with the final design configuration as shown elsewhere in the Contracts Documents

The complete foundation investigation and design report for this project and other related documents may be examined at the Materials Engineering and Research Office, Downsview. Information contained in this report and related documents are specifically excluded in accordance with the conditions of Section GC 2.01 of OPS Gen. Cond.

REV. No.		
	DATE	DESCRIPTION
14/06/2011	SM	

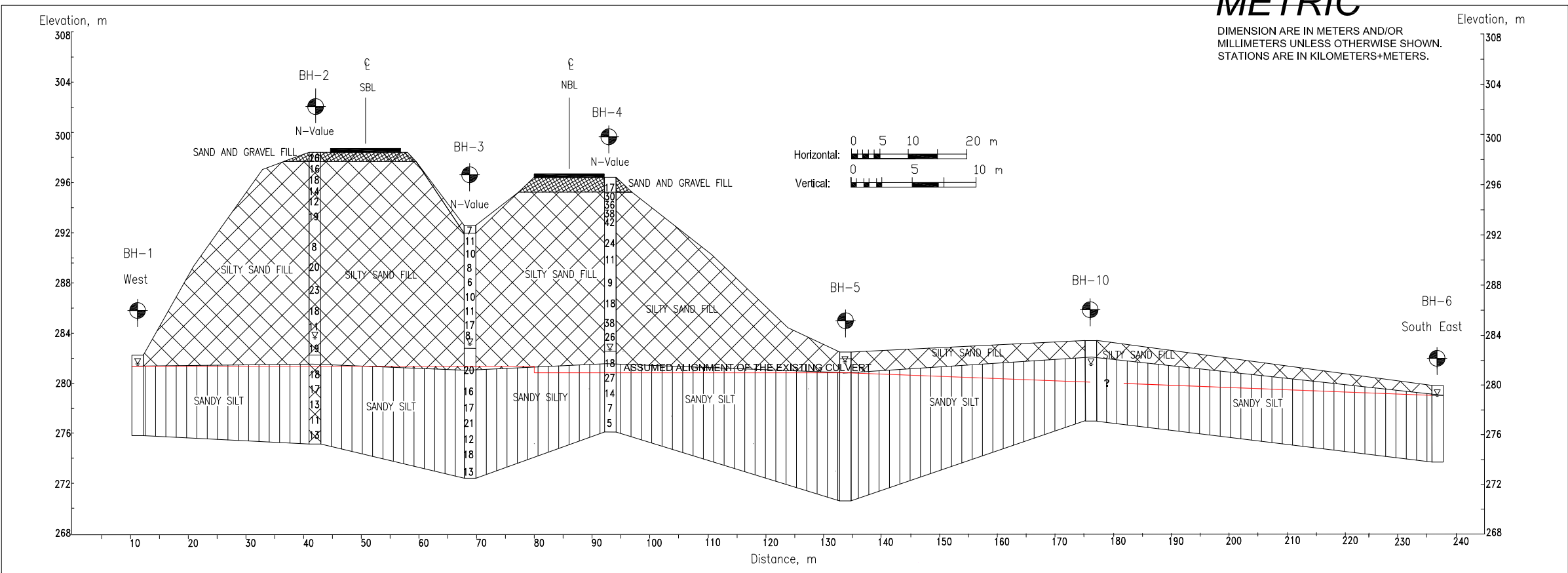
Geocres No. 31E-311			
HWY No.11	Project No. ADM 00200887-A0	DIST. MUSKOKA	
SUBM'D: SM	CHECKED: SG	DATE: JUNE 2011	SITE:
DRAWN: AG	CHECKED: SM	APPROVED: SG	DWG. 01



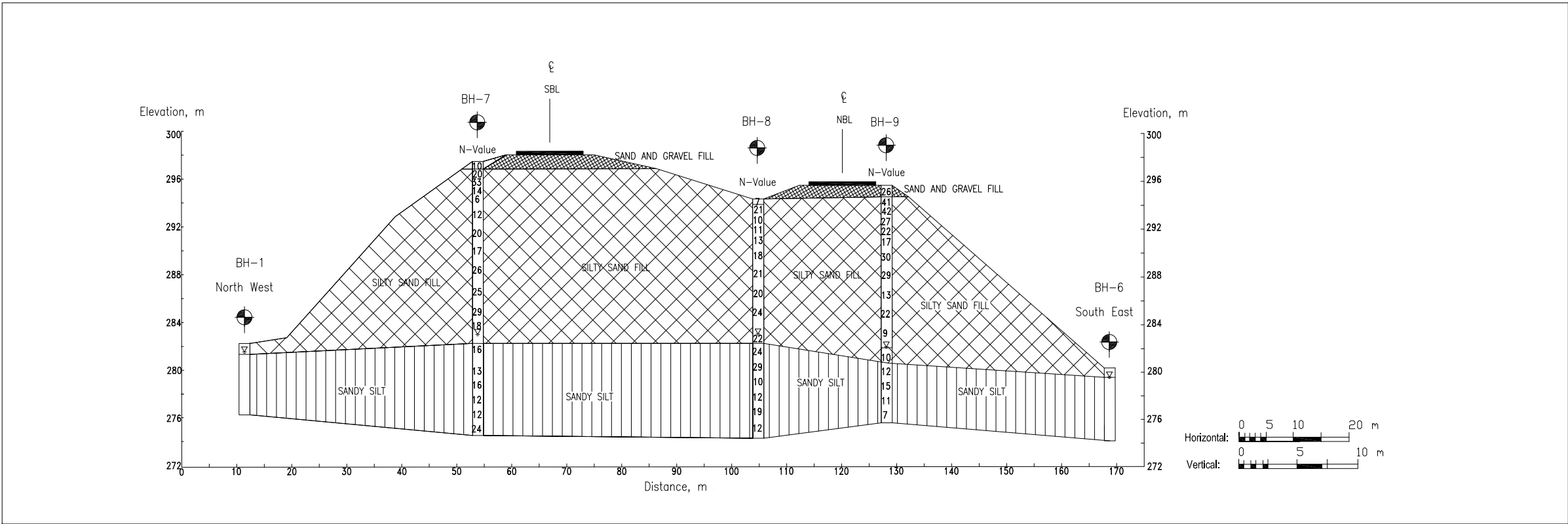
PLAN

METRIC

DIMENSION ARE IN METERS AND/OR MILLIMETERS UNLESS OTHERWISE SHOWN. STATIONS ARE IN KILOMETERS+METERS.



A-A SECTION 1



B-B SECTION 1

CONT No.  
GWP 322-00-00

HWY 11 CENTRELINE CULVERT  
MACAULAY TOWNSHIP  
SECITON A-A and B-B



SHEET

2



EXP Services Inc.

The new identity of Trow Associates



KEY MAP

not to scale

LEGEND

- Approx. Borehole Location (Current Investigation)
- Water Level
- Pavement
- 'N' Blow/0.3 m
- CULVERT

BH No.	ELEV.	CO-ORDINATES	
		NORTH	EAST
1	282.5	4 997 654	319 602
2	298.7	4 997 657	319 636
3	292.9	4 997 664	319 657
4	296.6	4 997 656	319 685
5	283.0	4 997 652	319 720
6	280.2	4 997 545	319 724
7	297.8	4 997 612	319 633
8	294.6	4 997 574	319 673
9	295.7	4 997 558	319 687
10	283.9	4 997 615	319 716

NOTE

This drawing is for subsurface information only. The proposed structure details/works are shown for illustration purposes only and may not be consistent with the final design configuration as shown elsewhere in the Contracts Documents

The complete foundation Investigation and design report for this project and other related documents may be examined at the Materials Engineering and Research Office, Downsview. Information contained in this report and related documents are specifically excluded in accordance with the conditions of Section GC 2.01 of OPS Gen. Cond.

REV. No.	DATE	BY	DESCRIPTION
14/06/2011	SM		

Geocres No. 31E-311

HWY No.11	Project No. ADM 00200887-A0	DIST. MUSKOKA
SUBM'D: SM	CHECKED: SG	DATE: JUNE 2011
DRAWN: AG	CHECKED: SM	APPROVED: SG
		DWG. 02