

**PRELIMINARY FOUNDATION INVESTIGATION AND DESIGN REPORT
PROPOSED MCGREGOR CREEK BRIDGE REPLACEMENT
HIGHWAY 40, NORTH OF HIGHWAY 401
HIGHWAY 401/40 INTERCHANGE ONTARIO
SITE NO. 13-168
G.W.P. 3093-09-00

MTO GEOCRETS NO. 40J8-56**

Prepared for:

Ministry of Transportation Ontario

By:

SPL CONSULTANTS LIMITED

Project: 919-1101 (13-168)
December 2011



SPL Consultants Limited
Geotechnical Environmental Materials Hydrogeology

146 Colonnade Road
Ottawa, Ontario K2E 7Y1
Tel: 613.228.0065 Fax: 613.228.0045

PART A
PRELIMINARY FOUNDATION INVESTIGATION REPORT
PROPOSED MCGREGOR CREEK BRIDGE REPLACEMENT
HIGHWAY 40 NORTH OF HIGHWAY 401
HIGHWAY 401/40 INTERCHANGE ONTARIO
SITE NO. 13-168

1.0 INTRODUCTION

SPL Consultants Limited (SPL) was retained by the Ontario Ministry of Transportation (MTO) to conduct a foundation investigation at the McGregor Creek Crossing (Site No. 13-168) located on Highway 40 north of Highway 401 near Chatham-Kent, Ontario.

The terms of reference (TOR) for this investigation are outlined in the Request for Proposal (RFP) issued by the Ministry of Transportation under Agreement No. 3011-E-0005 dated May 2011 and SPL's subsequent Proposal No. P11.06.024 dated June 2011.

The purpose of the preliminary foundation investigation was to obtain subsurface information at the site by means of a single exploratory borehole. This report presents the factual findings of the foundation investigation carried out at the site, as well as preliminary comments and recommendations related to the design and construction of the proposed new structure.

The investigation forms part of the larger Highway 401/40 interchange project. The project includes a total of six preliminary foundation investigations; the remaining five are submitted under separate cover. As part of this project a geotechnical (pavement) investigation was also carried out at the site concurrent with the foundation investigations. The results of the pavement investigation are also presented under separate cover.

2.0 SITE DESCRIPTION

The site is located where Highway 40 crosses McGregor Creek, north of Highway 401 in the Geographical Township of Harwich, County of Kent, Ontario. The crossing is situated on the generally flat terrain of the St. Clair Clay Plain.

The existing structure at the creek crossing is a reinforced concrete single span rigid frame slab bridge. Site Photographs are included in Appendix A.

3.0 INVESTIGATION PROCEDURES

The foundation investigation was carried out in September 2011. The scope of work for this assignment included a desk study, field investigations, laboratory testing, analysis and preparation of this report.

3.1 Desk Study

Surficial geology in the area comprises fine-textured glacio-lacustrine and modern alluvial deposits, overlying glacial till.

Bedrock in the general area is black, non-calcareous shale with silty shale interbeds of the upper Devonian Kettle Point formation.

The GEOCREs database includes the results of several previous investigations at the Highway 401/40 interchange including a previous investigation at the McGregor Creek crossing on Highway 40 which is the subject of this report. The existing foundation information at the site is found in the following previous reports:

Table 1 – Previous Foundation Reports at Highway 401/40 Interchange

GEOCREs No.	Location
40J8-15	Highway 40 Underpass – Highway 401/40 Interchange
40J8-14	McGregor Creek Bridge – Highway 40 south of Highway 401
40J8-24	McGregor Creek Bridge – Highway 40 north of Highway 401 ¹
40J8-13	McGregor Creek Bridges (EBL and WBL) – Highway 401 East of Highway 40

These investigation results included in the various reports suggest the general area is underlain by a layer of very stiff, grey, silty clay till. A layer (or layers) of water-bearing sand and gravel was also encountered in some of the boreholes in the general area of the 401/40 interchange (including the report at the subject crossing).

The previous report for the subject bridge (40J8-24, dated 1960) includes four borehole records drilled as part of a proposed (at that time) bridge over McGregor Creek. Two boreholes (BH1 and BH2) appear to have been drilled on the north side of the creek (roughly 60 m to 80 m north of the creek). BH1 was drilled to the west of the road and encountered 2.9 m of very loose to loose silt and sand, overlying dense grey till which extended to 11.9 m, below which a lens of coarse sand was encountered. BH2 was drilled on or near the existing (in 1960) road and encountered 3.1 m of fill, underlain by around 2 m of clay and alluvial deposits. These soils were underlain by silty till at a depth of approximately 5.6 m. The till extended to the depth of drilling at 11.9 m.

The other two boreholes (BH3 and BH4) were drilled in the creek. At these locations the boreholes encountered approximately 2.3 m to 2.7 m of alluvial soils, overlying till which extended to the depth of drilling at 8.2 m.

¹ Site of the current investigation

Project correspondence included with the file recommends the bridge structure be founded on spread footings within the clay till layer at or below 177.4 m elevation (582.0'). This is approximately 2.5 m below the ground surface at the time of the investigation. The actual foundation construction, however, cannot be confirmed based on the information available.

A copy of the 1960 geotechnical investigation is included in Appendix B of this report.

3.2 Field Investigation

The foundation investigation for this site was carried out in September, 2011 and included drilling two boreholes at the existing bridge crossing. BH13-168 was drilled specifically for the McGregor Creek crossing which is the subject of this report. BH13-524 was drilled for the proposed new west-bound on ramp, however as it is immediately adjacent to the bridge it has also been included in this report. As mentioned previously, additional shallow boreholes were advanced at the same time for the geotechnical (pavement) portion of the work; the results of these boreholes are submitted with the geotechnical (pavement) investigation report under separate cover.

The boreholes were advanced using a truck-mounted drill rig supplied and operated by London Soil Test Ltd. of London, ON. The boreholes were advanced using hollow-stem auger drilling as well rock coring techniques (using "N" size triple tube core barrels) to a depth of 31.8 m and 31.1 m below the existing ground surface in BH13-168 and BH13-524, respectively. During drilling, sampling and in-situ testing including Standard Penetration (SPT) Testing and Dynamic Cone Penetration (DCPT) Testing were carried out.

A standpipe piezometer was installed in both boreholes to allow for subsequent measurement of the stabilized groundwater level at the site. The boreholes were backfilled with bentonite and were sealed at the ground surface.

The borehole locations are shown in Drawing 2. Borehole records are included in Appendix C of this report.

3.3 Laboratory Testing

Upon completion of drilling and in-situ testing, soil samples were returned to SPL's laboratory for further examination and classification. A laboratory testing program, including determination of natural water content, soil density, Atterberg limits (plasticity) and grain size distribution (sieve and hydrometer) was carried out on selected representative soil samples.

The results of natural water content tests are included on the relevant borehole logs in Appendix C. The results of plasticity testing are included on the borehole logs, and presented in the Plasticity Chart included as Drawing 3. The results of determination of grain size distribution are summarized on the borehole logs and are presented in Drawings 4 through 6.

4.0 SUBSURFACE CONDITIONS

The subsurface conditions at the site are discussed in the following sections. Detailed descriptions of the soil and groundwater conditions encountered at the borehole locations are included in the borehole log in Appendix C.

4.1 Soil & Rock Conditions

4.1.1 Asphalt

Both boreholes were drilled on the shoulder of the existing highway. A layer of asphalt 100 mm to 125 mm thick was present at the ground surface.

4.1.2 Fill

Immediately underlying the asphalt, the boreholes (which were drilled on the north and south approach embankments) encountered a layer of fill material. The uppermost fill extended to a depth of 1.0 m and 0.6 m in BH13-168 and BH13-524, respectively and comprised dense sand and gravel, which is inferred to be the pavement structure of the highway.

Grain size analysis was carried out on two samples of the granular fill (one from each side of the creek). The results are presented in Figure 4, and are summarized in Table 2 below.

Table 2 – Results of Grain Size Analyses for Granular Fill

Borehole No.	Sample No.	Grain Size Distribution		
		% Gravel	% Sand	% Silt & Clay
BH13-168	SS1	34	59	7
BH13-524	SS1	32	58	10

Underlying this granular fill the remainder of the embankment fill includes firm to stiff (as inferred from SPT “N” values) clayey silt which extended to a depth of approximately 5 m below the existing road surface at BH13-168 on the south side of the bridge/creek and approximately 3 m at BH13-524 on the north side of the bridge/creek. Similar fine-grained fill was noted in BH-2 drilled in 1960 on Highway 40. Natural water contents in the clayey silt fill material were found to range from about 14 to 18.

4.1.3 Clay, Silt and Sand

Underlying the fill material a variable deposit of clay, silt and sand was encountered at most of the locations investigated.

In the four boreholes drilled in 1960 deposits of alluvial silt and sand were encountered in all four boreholes. Three of the boreholes (BH-1, BH-3 and BH-4) were drilled in the creek bottom and at these locations the thickness of the alluvial soils was found to be 2.3 m to 2.9 m thick. At BH-2 (drilled on the highway) similar soil was encountered below the fill embankment.

BH13-168 drilled on the south side of the existing structure as part of the current investigation encountered a deposit of stratified clayey silt and sand with trace gravel which extended from the base of the fill embankment to approximately 9.2 m below the existing ground surface. BH13-524 on the north side of the existing structure did not encounter this soil deposit.

Grain size analysis was carried out on one sample of the coarser soils within this deposit. The results are summarized in Table 3 below.

Table 3 – Results of Grain Size Analyses for Silty Sand

Borehole No.	Sample No.	Grain Size Distribution			
		% Gravel	% Sand	% Silt	% Clay
BH13-168	SS8	20	64	11	5

Based on SPT “N” values the soil deposit would be described as firm to stiff (cohesive soils) or loose to compact (cohesionless soils).

4.1.4 Silty Clay/Clayey Silt Till

Underlying the upper stratified soils a thick deposit of clayey silt and silty clay till was encountered. The till extended to a depth of 21.4 m to 22.8 m depth in the borehole drilled as part of this current investigation, to a depth of 11.9 m in the Borehole BH1 drilled in 1960, and to the depth of drilling in the remaining three 1960 boreholes.

Based the results of in-situ and laboratory testing there is an upper till layer which extends to approximately 15 m to 17 m depth (in the boreholes drilled as part of this investigation) and a lower till unit which is typically stiffer and has a lower natural water content.

A layer of sand and gravel was encountered within the till layer from 15.2 m depth to 16.7 m depth in Borehole BH13-524. A sand layer was encountered at a similar depth in BH1 drilled in 1960. A layer of silty sand was encountered in BH13-168 from 7.6 m to 9.2 m depth. Sand lenses may be present at other locations as well.

The results of Atterberg limits (plasticity) testing on representative samples of the silty clay till yielded liquid limits of 20 to 40 and plasticity indices of 10 to 20 indicating a low to medium plastic silty clay (see

Drawing 3). Natural water contents were typically around 20% above 15 m to 17 m depth and were around 10% below that depth.

The grain size distributions of selected samples of the silty clay till are presented in Drawing 5, and are summarized in Table 4 below.

Table 4 – Results of Grain Size Analyses for Silty Clay Till

Borehole No.	Sample No.	Grain Size Distribution			
		% Gravel	% Sand	% Silt	% Clay
13-168	SS13	4	32	33	31
13-168	SS15	4	47	32	17
13-524	SS5	2	34	37	27
13-524	SS9	3	23	42	32
13-524	SS14	4	58	22	16

Measurements of unit weight carried out on samples of the silty clay till obtained in both the current and 1960 investigation yielded values of 20.8 kN/m³ to 22.6 kN/m³.

SPT “N” values measured during the current investigations are generally between 10 and 20 in the upper 15 m to 16 m of the deposit (indicating a stiff to very stiff consistency) and between 30 and 50 below that depth (indicating a very stiff to hard consistency). A field vane test was carried out at BH13-524 within the till and yielded an undrained shear strength of 100 kPa indicating a stiff to very stiff consistency. Laboratory undrained shear strengths presented in the 1960 investigation for the upper till range from 85 kPa to 150 kPa (which again would be considered stiff to very stiff).

4.1.5 Sand and Gravel

The glacial till is underlain by a layer of compact to dense sand and gravel, which was encountered in the both of the boreholes drilled as part of the current investigations. The sand and gravel was encountered at 21.4 m and 22.8 m depth in Boreholes BH13-168 and BH13-524, respectively and ranged in thickness from 4.2 m to 4.4 m.

Heaving and flowing conditions were encountered in this layer and drilling was found to be relatively difficult. SPT testing could not be carried out in this layer due to heaving and flowing sand.

4.1.6 Bedrock

Bedrock was encountered at 25.9 m and 27.0 m depth (159.1 m and 159.4 m elevation) in Boreholes BH13-168 and BH13-524. At Borehole BH13-168 the rock was augered from 25.9 m to 29.0 m at which point auger refusal was encountered. At Borehole BH13-524 the rock could be augered from 27.0 m to 28.0 m before auger refusal was encountered.

At both locations the boreholes were cored using “N” size coring equipment from that depth. Approximately 100% recovery was obtained during coring. The bedrock comprises dark grey fresh to slightly weathered shale. The shale is very thinly bedded with closely spaced discontinuities. RQD values for the shale bedrock range from 74% to 100%, indicating good to excellent quality rock.

4.2 Groundwater Conditions

Standpipe piezometers were installed in both of the boreholes drilled as part of the current investigation. The groundwater elevation at the site was measured in October 2011 and found to be at 10.0 m and 11.6 m depth in Boreholes BH13-168 and BH13-524, respectively. These depths correspond to 175.0 and 174.8 m elevation. Groundwater levels were obtained in some boreholes drilled in the creek in the 1960 investigation and were similar to the level of the creek at the time (which is approximately 5 m higher than the groundwater levels measured in the till during the current investigation).

It should be noted that the groundwater levels can vary and are subject to seasonal fluctuations as well as fluctuations in response to major weather events, and in particular for this site in response to sustained changes in the level of the creek. If construction is carried out at a time when the creek level is higher than the level at the time of the foundation investigation, a corresponding increase in groundwater levels should be anticipated.

4.3 Summary

A summary of the soil and groundwater conditions encountered at the McGregor Creek crossing location is presented in Table 5 below.²

² The values presented for the 1960 investigation have been obtained from a copy of the investigation report which was made available to us. The accuracy of this data has not been verified as part of this study. It is recommended that this value be treated with caution.

Table 5 – Simplified Stratigraphy and Groundwater Elevations

BH No.	Elev.	Simplified Stratigraphy (Depth, m)						Ground Water Elevation
		Asphalt & Granular Fill	Silt & Clay Fill	Clay, Silt & Sand	Silty Clay / Clayey Silt Till	Sand & Gravel	Shale Bedrock	
13-168 (2011)	185.0	0.0 – 1.0	1.0 – 5.0	5.0 – 9.2	9.2 – 21.4	21.4 – 25.9	25.9 – 31.8	175.0 m
13-524 (2011)	186.4	0.0 – 0.6	0.6 – 2.9	--	2.9 – 22.8	15.2 – 16.7 22.8 – 27.0	27.0 – 31.1	174.8 m
BH-1 (1960)	180.3	--	--	0.0 – 2.9	2.9 – 11.9	11.9 – 13.7	--	179.9 m
BH-2 (1960)	182.6	--	0.0 – 3.0	3.0 – 5.6	5.6 – 11.9	--	--	180.1 m
BH-3 (1960)	179.4	--	--	0.0 – 2.3	2.3 – 9.3	--	--	--
BH-4 (1960)	179.6	--	--	0.0 – 2.4	2.4 – 7.6	--	--	--

5.0 CLOSURE

Field investigations for this project were supervised by Phil Resendes. This report was prepared by Mr. Chris Hendry, P.Eng. Mr. Fanyu Zhu, P.Eng., SPL's project manager and designated MTO Contact, and Mr. Shaheen Ahmad, P.Eng., SPL's quality control auditor provided independent review and quality control.

SPL CONSULTANTS LIMITED



Chris Hendry, M.Eng., P.Eng.



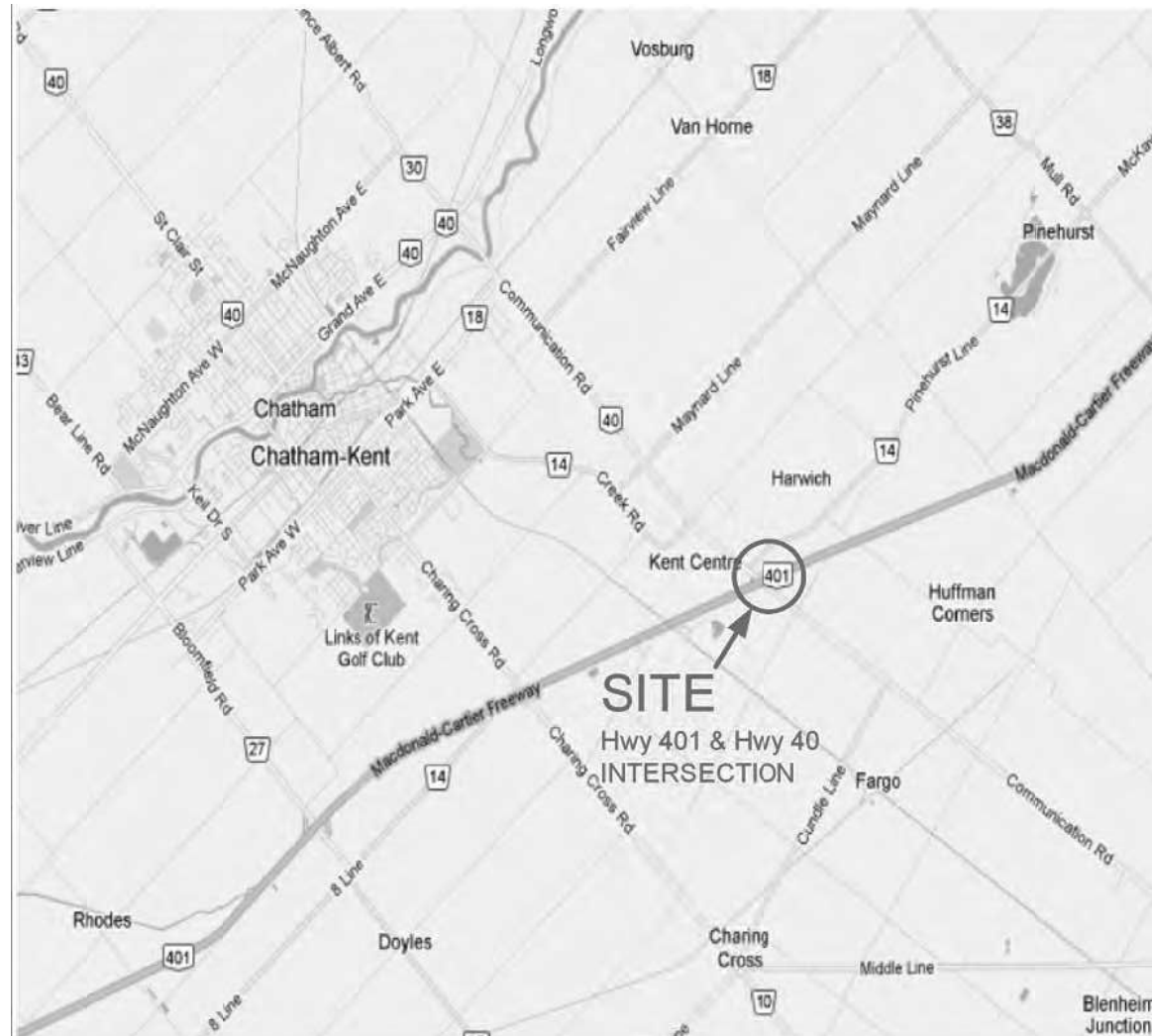
Fanyu Zhu, Ph.D., P.Eng.




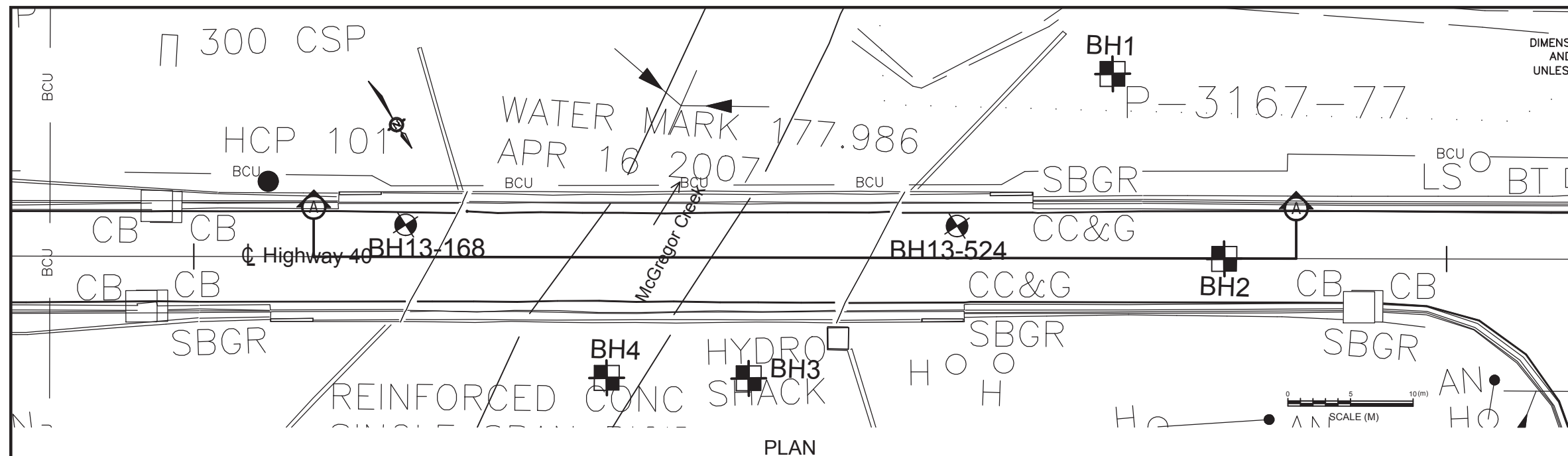

Shaheen Ahmad, M.A.Sc., P.Eng.



Drawings



		Client: Ministry of Transportation Ontario		Title: SITE PLAN		Project: Foundation Investigation Structure 13-168, Hwy 40 & Hwy 401	
		Date: DEC 12, 2011	Drawn: NT	Scale: N/A	Project No.: 919-1101	 SPL Consultants Limited Geotechnical • Environmental • Materials • Hydrogeology	
		Original Size: LETTER	Approved: CH	Rev: N/A	Drawing No.: 1		

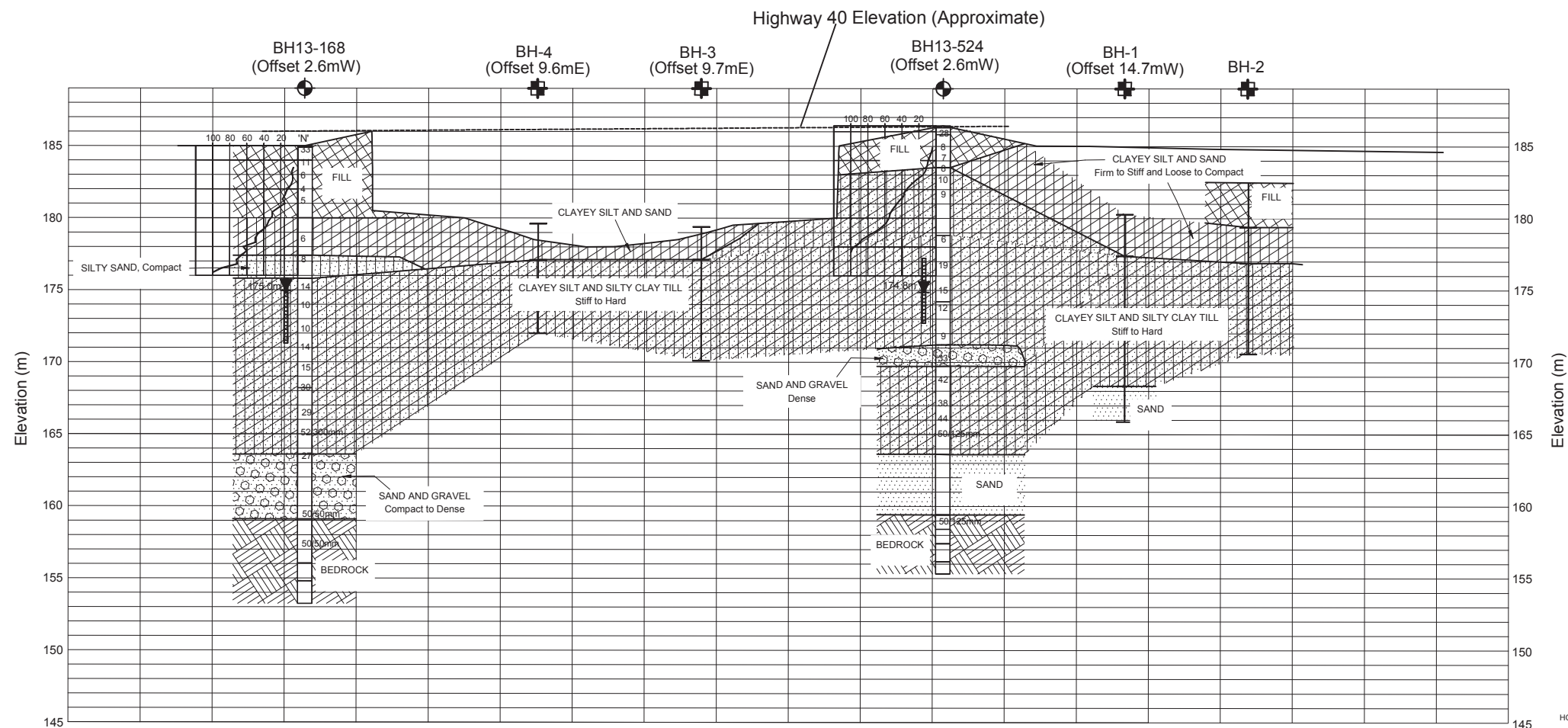


CONT No
WP No 3093-09-00

McGregor Creek
Bridge Widening
Highway 40 North of 401
BORE HOLE LOCATIONS & SOIL STRATA

SPL Consultants Limited
Geotechnical • Environmental • Materials • Hydrogeology

KEY PLAN
NOT TO SCALE



CROSS-SECTION A-A'

SOIL STRATA SYMBOLS

- GRANULAR FILL
- CLAYEY SILT AND SILTY CLAY TILL
- SAND AND GRAVEL
- SILTY SAND
- CLAYEY SILT AND SAND
- SAND
- BEDROCK

LEGEND

Bore Hole Drilled in 2011

Bore Hole drilled in 1960

N Blows/0.3m (Std Pen Test, 475 J/blow)

CONE Blows/0.3m (60' Cone, 475 J/blow)

WL in Piezometer

Piezometer

BH No	ELEV:	NORTHING	EASTING
13-168	185.0	4693806	338175
13-524	186.4	4693830	338138

NOTES

The boundaries between soil strata have been established only at Bore Hole locations. Between Bore holes the boundaries are assumed from geological evidence.

Locations and Elevations of Boreholes Drilled in 1960 are approximate only and have not been verified.

REVISIONS

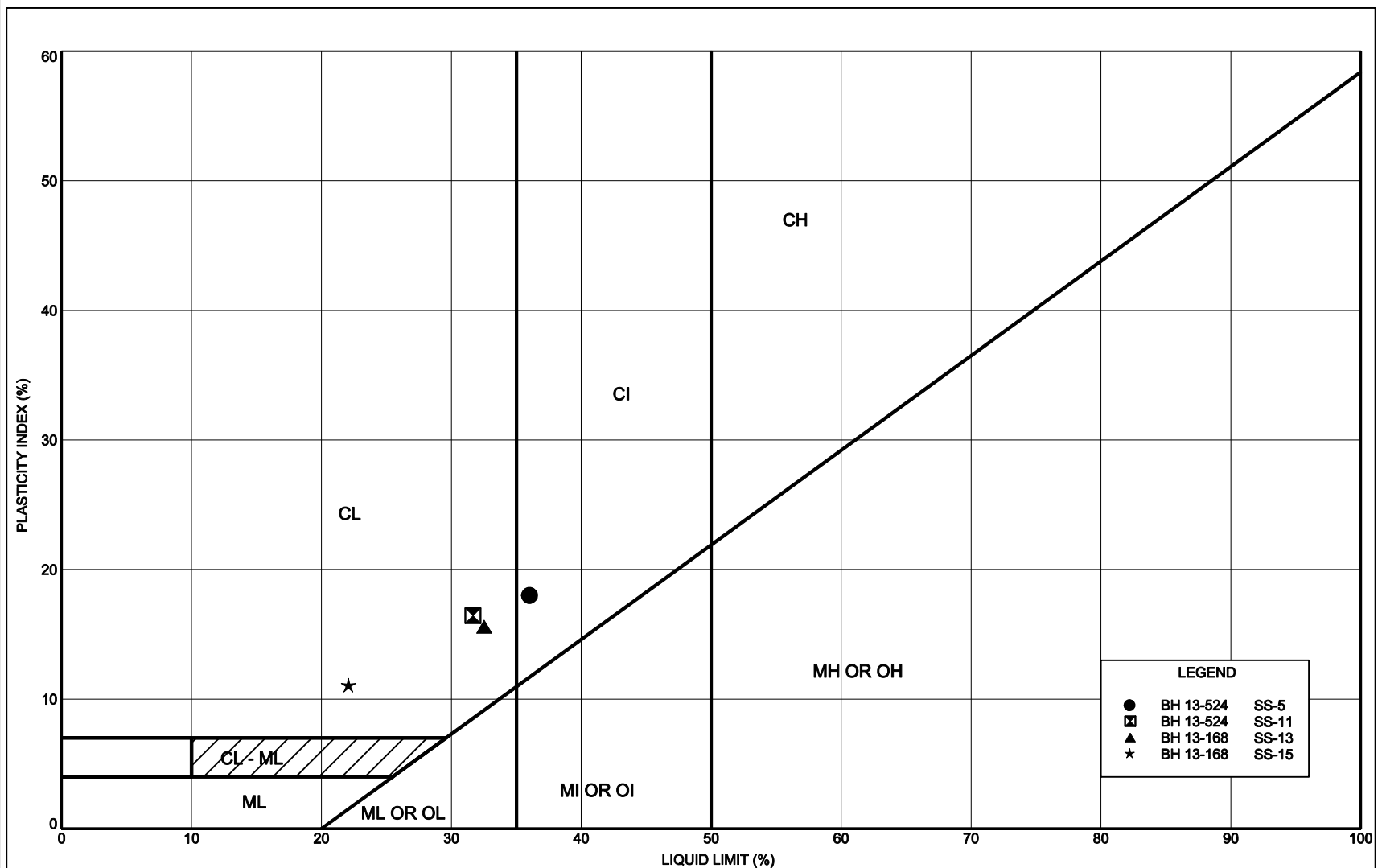
DATE	BY	DESCRIPTION
Dec.16, 2011	PR	Final Revision

GEOCRES No 40JB-56

HWY No 401		DIST Chatham
SUBM'D CH	CHECKED CH	DATE Dec.16, 2011
DRAWN PR	CHECKED CH	APPROVED FZ

SITE 13-168

DWG 2



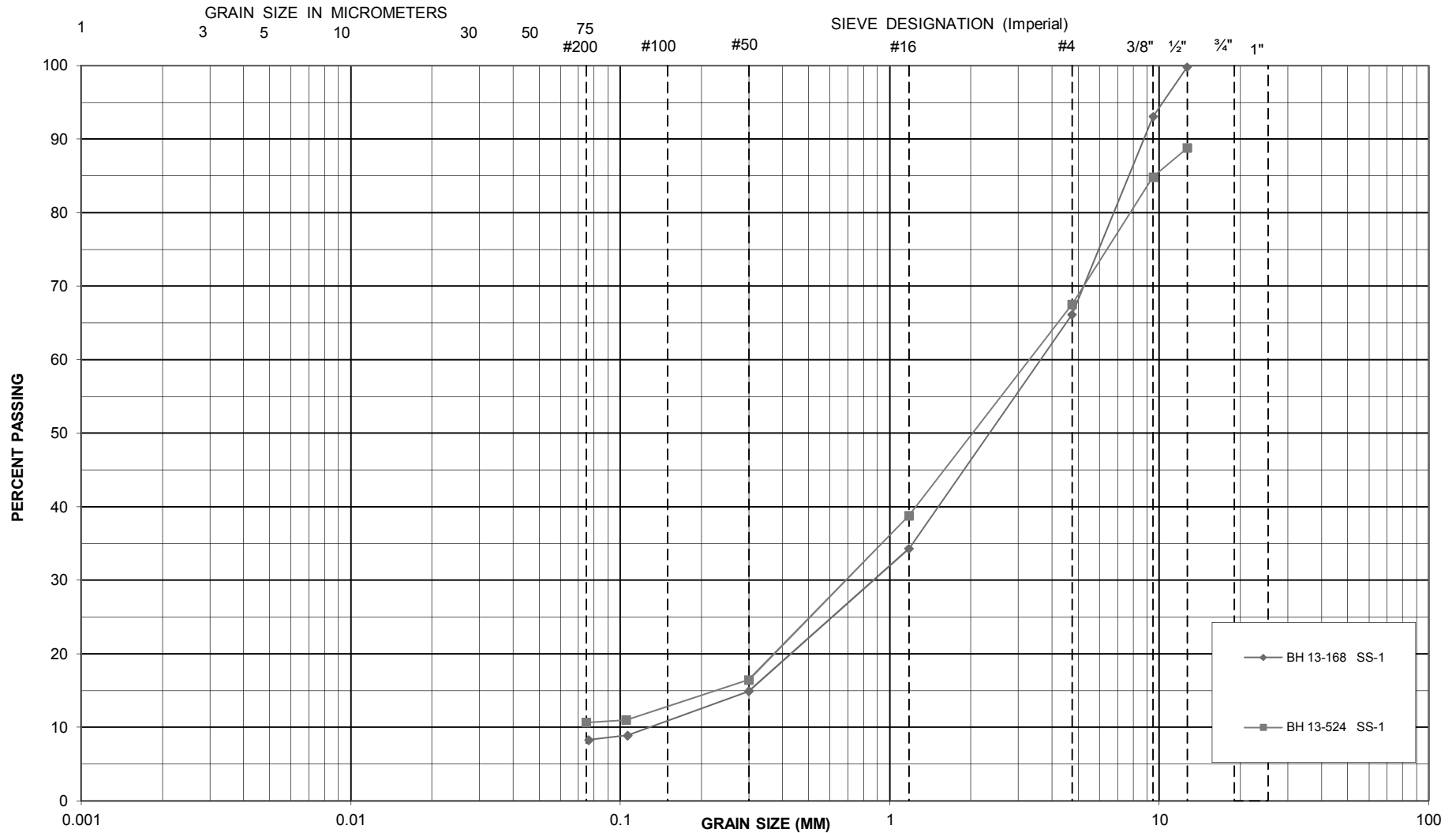
Client: Ministry of Transportation Ontario		Title: PLASTICITY CHART - SILTY CLAY TILL		
Date: DEC 12, 2011	Drawn: NT	Scale: N/A	Project No.: 919-1101	
Original Size: LETTER	Approved: CH	Rev: N/A	Drawing No.: 3	

Project: **Foundation Investigation
Structure 13-168, Hwy 40 & Hwy 401**

SPL Consultants Limited
Geotechnical • Environmental • Materials • Hydrogeology

UNIFIED SOIL CLASSIFICATION SYSTEM

CLAY AND SILT	SAND			GRAVEL	
	Fine	Medium	Coarse	Fine	Coarse



SPL Consultants Limited
Geotechnical Environmental Materials Hydrogeology

GRAIN SIZE DISTRIBUTION - GRANULAR FILL
Structure 13-168, Hwy 401 & Hwy 40, Chatham, Ontario

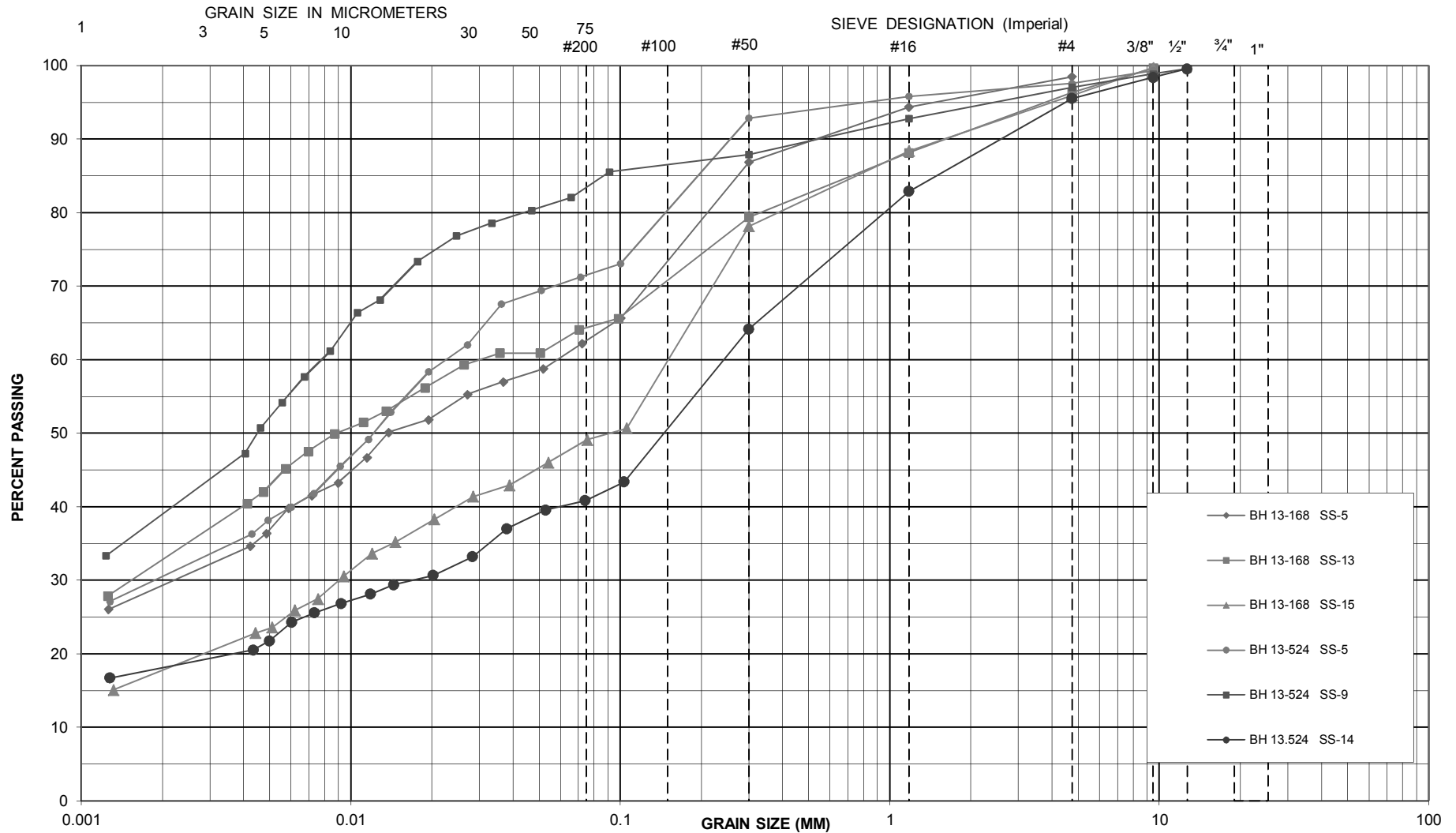
Drawing No: 4

Project No. 919-1101

Date: December 2011

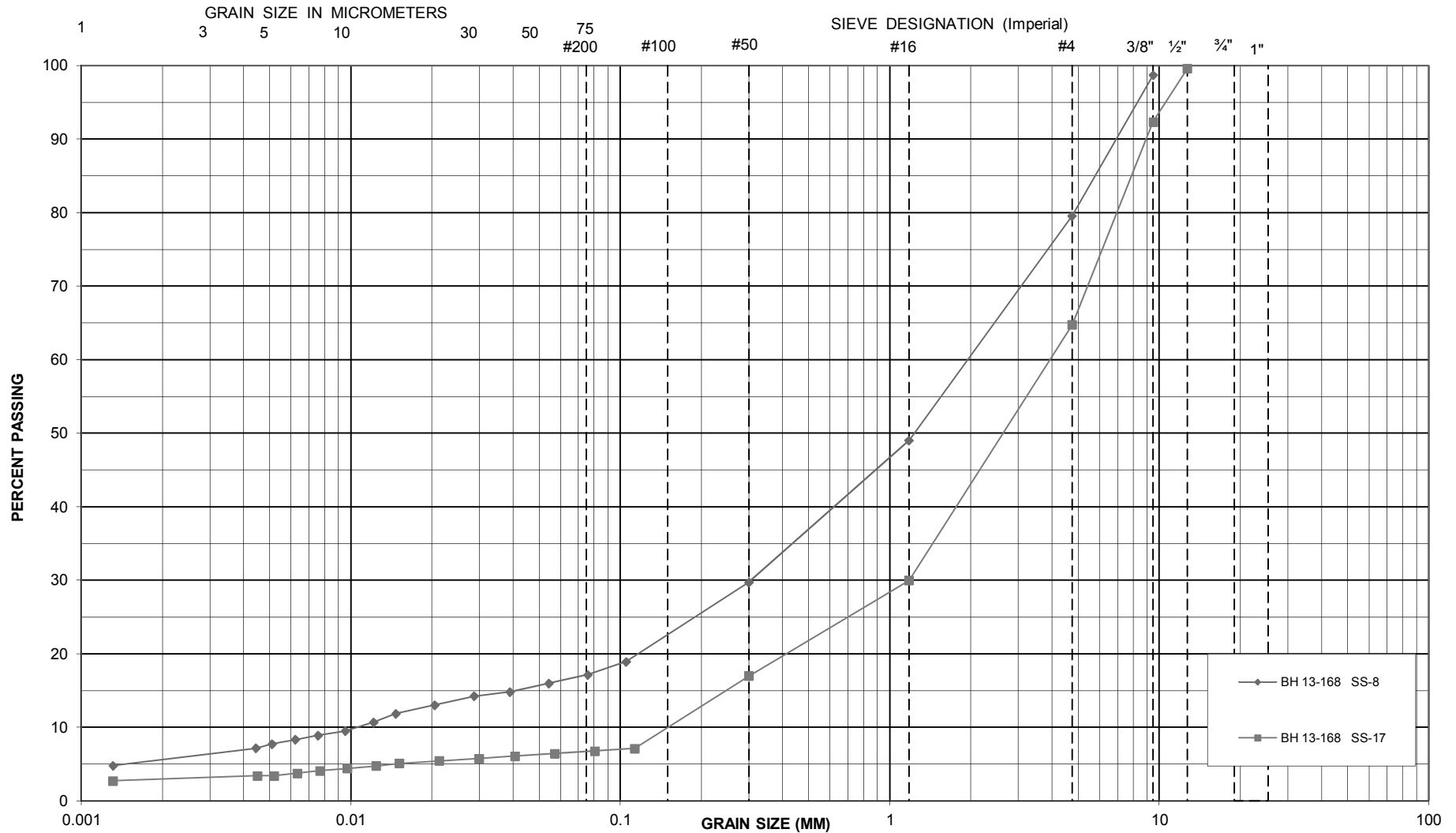
UNIFIED SOIL CLASSIFICATION SYSTEM

CLAY AND SILT	SAND			GRAVEL	
	Fine	Medium	Coarse	Fine	Coarse



UNIFIED SOIL CLASSIFICATION SYSTEM

CLAY AND SILT	SAND			GRAVEL	
	Fine	Medium	Coarse	Fine	Coarse



SPL Consultants Limited
Geotechnical Environmental Materials Hydrogeology

GRAIN SIZE DISTRIBUTION - SAND
Structure 13-168, Hwy 401 & Hwy 40, Chatham, Ontario

Drawing No: 6
Project No: 919-1101
Date: December 2011

Appendix A

Site Photos



Highway 40 over McGregor Creek (north of 401), facing south.



Highway 40 over McGregor Creek (north of 401), facing north.



Highway 40 over McGregor Creek (north of 401), facing south.

Appendix B

Previous Geotechnical Investigation

#60-F-228

W.P. # 303-59

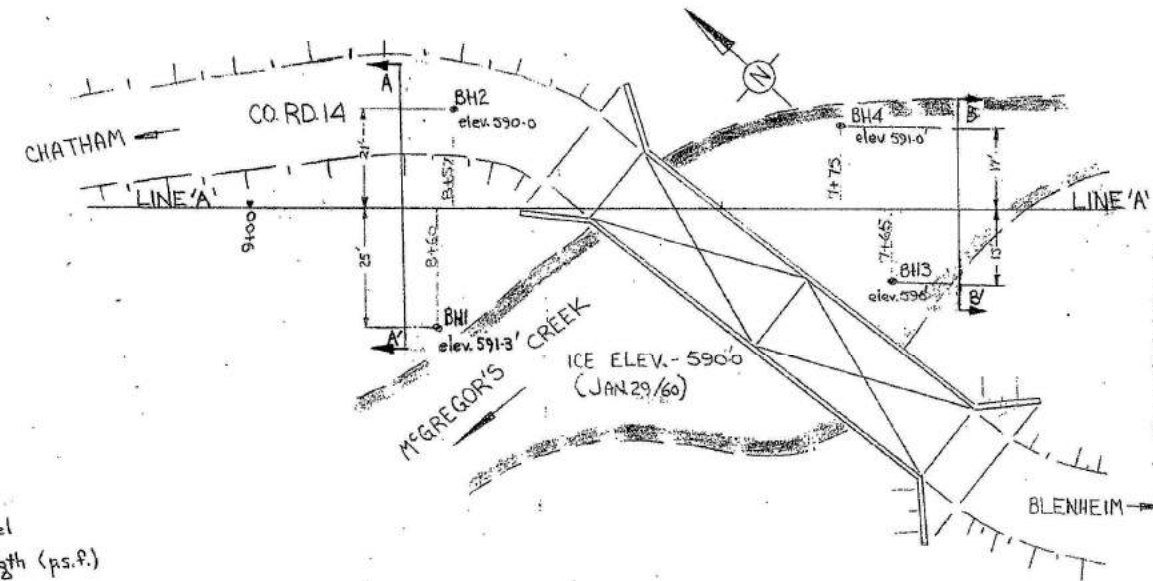
KENT CTY. RD. #14

PROP. BRIDGE

CROSSING

McGREGOR CR.

4038E



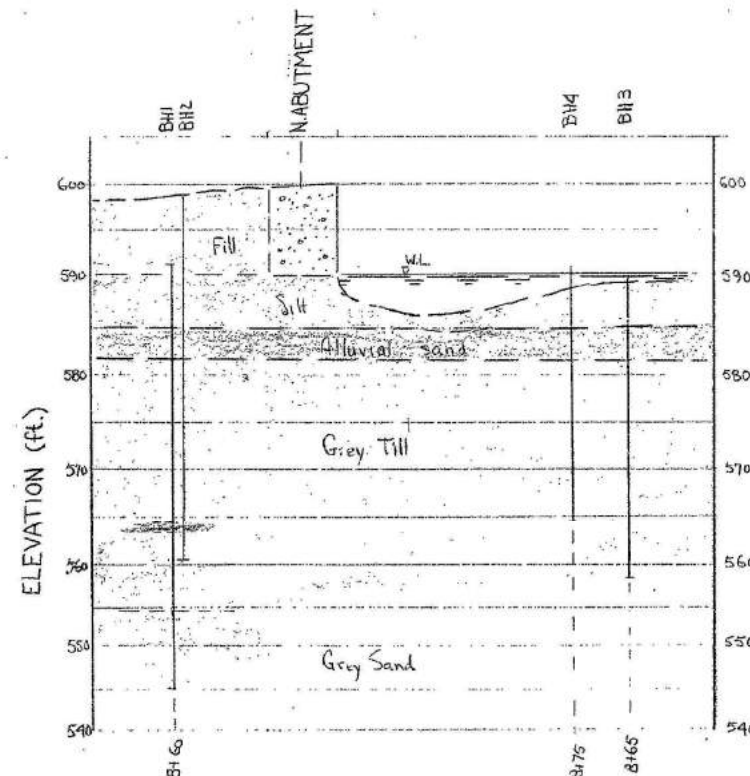
LEGEND:

- BH Bore hole
- WL Free water table level
- C_v Insitu vane shear strength (p.s.f.)
- ELEVATION - Geodetic datum

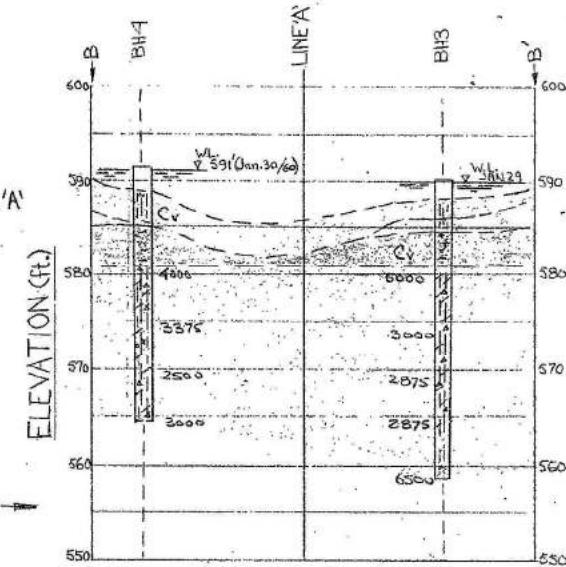
SOILS LEGEND:

- Road fill: clay, grey till, gravel, sand etc.
- Coarse grey silt (some brown at top), some sand, some organic material, iron stained.
- Loose, med., dark grey alluvial sand, some white calcareous material, traces of organic fibre.
- Med. dense grey till, predom. silt, some clay, some med. to fine sand, black shaly gravel.
- Loose coarse sand & gravel, predom. black shale.
- Dense coarse grey sand, almost stratified.

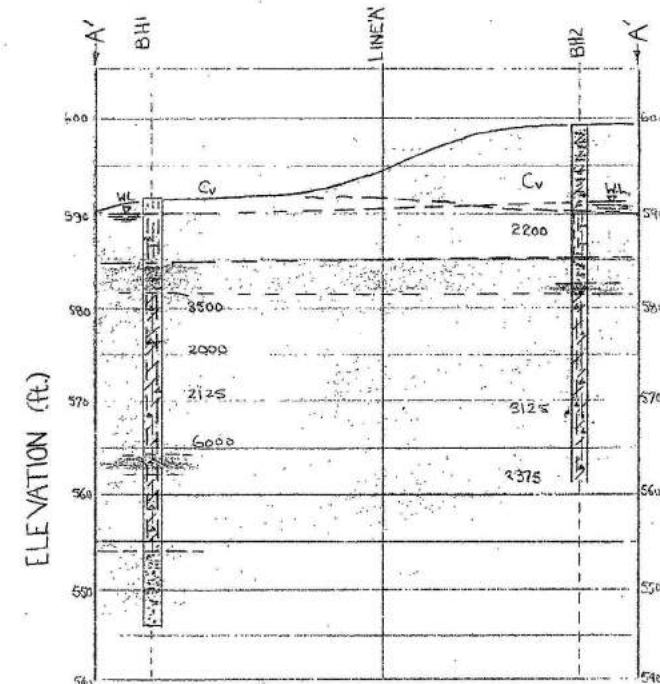
LOCATION OF BOREHOLES
SCALE 1"=20'



SUBSURFACE PROFILE ALONG LINE 'A'
HORIZONTAL SCALE 1"=20'
VERTICAL SCALE 1"=10'



SUBSURFACE SECTION ALONG B-B'
SCALE 1"=10'



SUBSURFACE SECTION ALONG A-A'
SCALE 1"=10'

ONTARIO DEPARTMENT OF HIGHWAYS
MATERIALS & RESEARCH SECTION

M^c GREGOR'S CREEK BRIDGE - KENT CO. RD. 14
HARWICH TWP. BET'N. CONI - ECR & CONI (WCR) - LOT 26
WP - 303 - 59

DOMINION SOIL INVESTIGATION LTD.
TORONTO
FIELD SUP - PL. JOB NO. 60-106 FEB 18/60 ENCL. #2



ONTARIO
DEPARTMENT OF HIGHWAYS

Memo to Mr. A. M. Toye, **Date** April 22, 1960.
Bridge Engineer. **Subject** FOUNDATION INVESTIGATION -- b
From Materials & Research Section. Dominion Soil Investigation, L

Attention: Mr. S. McCombie.

Re: Proposed Bridge Across McGregor Creek,
Kent County Rd. 14, Harwich Township,
Conc. I, Lot 26, District No. I,
W.P. 303-59.

We have reviewed the above mentioned Report submitted by Dominion Soil Investigation, Ltd., and have found the conclusions and recommendations in the report not adequate and, in some instances, the interpretation misleading.

By reviewing the field data, we have come to the conclusions which we suggest for you to follow in future design work:-

1. Spread footings should be used for the structure. The foundation elevation should be 562.0' - i.e., footings should be placed on top of the medium dense grey till material.
2. The allowable nett bearing capacity at the above mentioned elevation can be taken as 3.0 T/sq.ft.
(Average unconfined compression strength = 4,500 p.s.f.)
(Average shear strength by field vane .. = 4,000 p.s.f.)
3. Anticipated settlements will be in the order of 2 inches over a longer period of time (some 20 - 30 years). It is not expected that detrimental (greater than 3/4") differential settlement would occur.

cont'd. /2 ...

Recommendations: (cont'd.) ...

4. Settlements due to the placement of the approach embankment will take place within a short period of time, because of the silty character of the material below. Some differential settlements of the embankment must be expected because of some interbedded clay layers.

Should any queries arise with respect to the contents of the Consultant's report, or our foregoing comments, we would be pleased to discuss these further, with you.

L. G. Soderman,
PRINCIPAL SOILS & FOUNDATIONS ENGR.

Per:



(A. Stermac,
FOUNDATION OFFICE ENGINEER)

AS/MdeF
Attach.

cc: Messrs. A. M. Toye (2)
H. A. Tregaskes
D. G. Ramsay
A. Gater
G. U. Howell
J. Roy
A. Watt

Foundations Office
Gen. Files.

Department of Highways Ontario
Materials and Research Section
Downsview Ontario

REPORT ON
FOUNDATION INVESTIGATION
PROPOSED BRIDGE ACROSS MCGREGOR CREEK
KENT COUNTY RD. 14 - HARWICH TWP. CONC. 1, LOT 26
WP-303-59

Submitted by:
DOMINION SOIL INVESTIGATION LTD
88 Eglinton Ave. E.
Toronto 12 Ontario
April 1960

DOMINION SOIL INVESTIGATION LTD.

SOIL MECHANICS • FOUNDATION ENGINEERING

TORONTO 12, ONTARIO

FOUNDATION INVESTIGATION FOR
PROPOSED BRIDGE ACROSS MCGREGOR CREEK
KENT COUNTY ROAD 14
HARWICH TOWNSHIP
CONCESSION 1, LOT 26
WP-303-59

INTRODUCTION

Authorization was received from the Department of Highways, Materials and Research Section, to investigate soil condition for a proposed bridge foundation. The proposed bridge will span across McGregor Creek to serve the future Kent County Road 14. It is located near Kent Centre, Ontario.

This report presents:

- 1) An account of field tests and - work
- (2) Laboratory tests and data sheets with results of tests
- (3) Interpretation of results, and
- (4) Recommendations.

TABLE OF CONTENTS

	<u>Page</u>
1. DESCRIPTION & GEOLOGY OF THE SITE.	1
2. DRILLING PROGRAM.	1
3. LABORATORY TEST.	2
4. DESCRIPTION OF SUBSOIL.	3
5. RECOMMENDATIONS	4

ENGINEERING DATA SHEETS

Location of Boreholes	Enclosure	1
Borehole Logs	Encis. 2 -	7
Subsurface Section	Enclosure	8
Summary of Lab Test Results	Enclosure	9
Stress & Capacity Distribution Graphs	Enclosure	10

1. DESCRIPTION AND GEOLOGY OF THE SITE

There is an existing concrete and steel bridge over McGregor Creek which serves the present county road. In the future this road will be relocated, the creek diverted and a new bridge constructed (about 65' long). The present span is about 95' long and shows no visible sign of settlement.

Geology

McGregor Creek flows slowly and meanders to the north where it empties into the Thames River at Chatham. The creek is slowly dissecting the flat Wisconsin clay till sheets of the area. Floods occur in the spring and fall creating a broad silty alluvial flood plain in the creek valley. The soil has poor ability to absorb moisture. The banks of the valley are not well wooded. A lack of boulders was also noted in the creek valley, which is shallow (about 10 feet) and broad (about 100 feet) at the site.

This flat Wisconsin plain, general elevation in the area is 600[±] above sea level, is underlain by stratified sands occurring at about elevation 522[±].

2. DRILLING PROGRAM

Drilling was carried out between 27-30th January, 1960. Conventional washbore drilling was used. Elevations at every borehole were established by an engineering level. Existing bridge dock was used as benchmark. Holes were located by chainage stations along line 'A' from data supplied by D.H.O.

Water level in the creek changed rapidly due to melting ice, thus cribbing was placed on the bottom of the creek to serve as a platform for the drill. Changing water level made it impossible to place the holes three and four in their proposed positions, hence they were offset.

2. DRILLING PROGRAM - Continued

Sampling was carried out at regular intervals (see data sheet). Disturbed samples in the 2" split spoon and undisturbed ones in 2" shelly tubes were taken where necessary.

Vane shear tests were carried out in the clay materials of all four boreholes.

LABORATORY TESTS

Laboratory tests were carried out and following values determined:

- (a) Natural moisture contents
- (b) Unconfined compression strength of undisturbed samples
- (c) Sensitivity
- (d) Liquid limits
- (e) Dry unit weight
- (f) Consolidation test was attempted to determine settlement factor. However, considerable gravel content made it impossible. Details of above tests are enclosed in enclosure #9.

4. DESCRIPTION OF SUBSOIL

From samples of subsurface materials, six soil formations were classified. A detailed description of all samples and field tests may be found on "Bore Hole Log Sheets".

(a) Road Fill and Top Soil

Fill and top soil was found only in borehole #2 which penetrated the existing roadbed.

Fill material is highly ironstained and oxydized. It consists of clay and sand with added gravel.

Underlying the fill in borehole #2 is a 4 foot layer of sensitive (sensitivity = 6) blue clay with shear strength about 2200 p.s.f. This was determined from vane tests at elevation 587 feet.

(b) Grey Silt

Grey Silt is the surface material of McGregor Creek's flood plain, and forms the creek bed. Average thickness of this layer is about 4'. It is easily eroded.

(c) Dark Grey Sand

This about 3' thick layer, is well graded, but easily disturbed. Organic material seems to be distributed throughout the layer together with calcareous particles. Underlying this layer is 1' layer of water-bearing gravel, a possible former river bed.

(d) Grey Clay Till

This layer is medium dense. Silt content is increasing with depth. It extends from elevation 582'± in the creek valley where boreholes were taken.

At elevation 564' about a 2' thick lense of gravel was dissected in borehole #1 only.

Grey clay till in general has quite uniform physical properties. Low sensitivity (its value = 1 to 2) is prevalent, except in borehole #4 where a sensitivity of 8 was found.

Unconfined compression strength ranged from 6460 p.s.f. at elevation 580' to 3550 p.s.f. at elevation 571.5'.

(e) Grey Sand

This layer underlying till (see paragraph d) is a coarse-grained dense material. It is stratified. Resistance to penetration test rose to 49 blows per foot. Grey sand continues down from elevation 552'. At elevation 544' the drilling was stopped.

(f) Bedrock

Bedrock in this area is estimated to be about 90' below ground surface. It is a flatlying fissile black shale from Kettle Point Devonian.

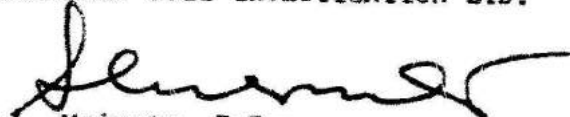
5. RECOMMENDATIONS

Footings could be placed on grey till at elevation 580' or below. Bearing capacity of 6170 p.s.f. was found at top of till based on unconfined compression test for 10' x 30' footing. However in borehole #4 high sensitivity (about 8) and a natural moisture content (about 18) was found. A consolidation test could not be performed because of gravel content. Due to difference in sensitivity in various boreholes a high differential settlement could be expected, thus spread or strip footings are not suitable.

For pile foundation no endbearing strata was encountered at elevations explored. High sensitivity in hole #4 outrules friction type of pile foundation. Organic content can also be considered detrimental to steel H-piles.

A culvert type of structure is most suitable for the location. Due to long span (about 65') a twin or triple culvert can be most advantageously used. Maximum bearing capacity of the soil from unconfined compression test was found to be 4080 p.s.f. for 25' x 65' culvert.

DOMINION SOIL INVESTIGATION LTD.



L. Maimets, P.Eng.

Order No. 60-106

Prep. By P.L.

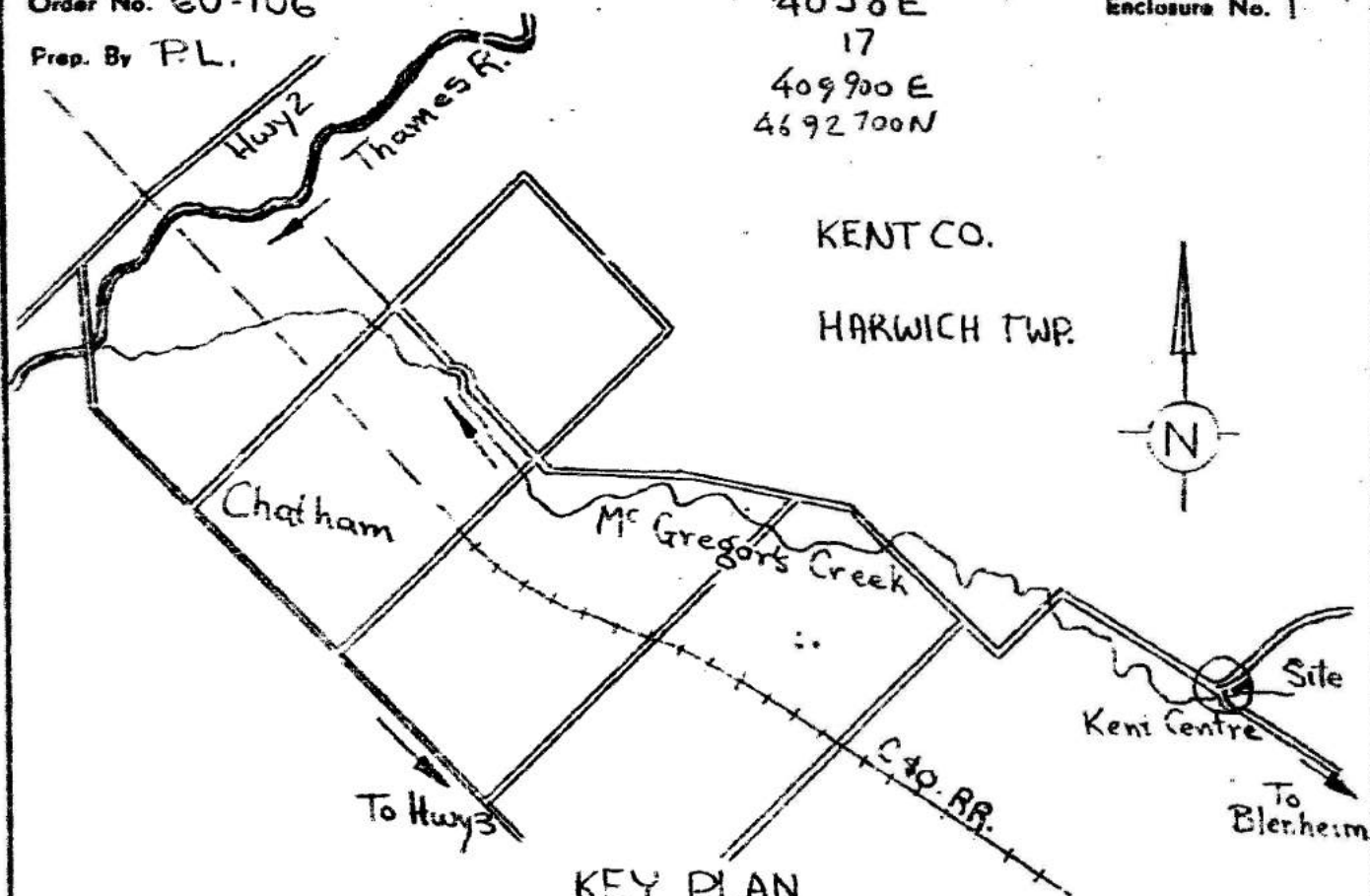
4038E

17

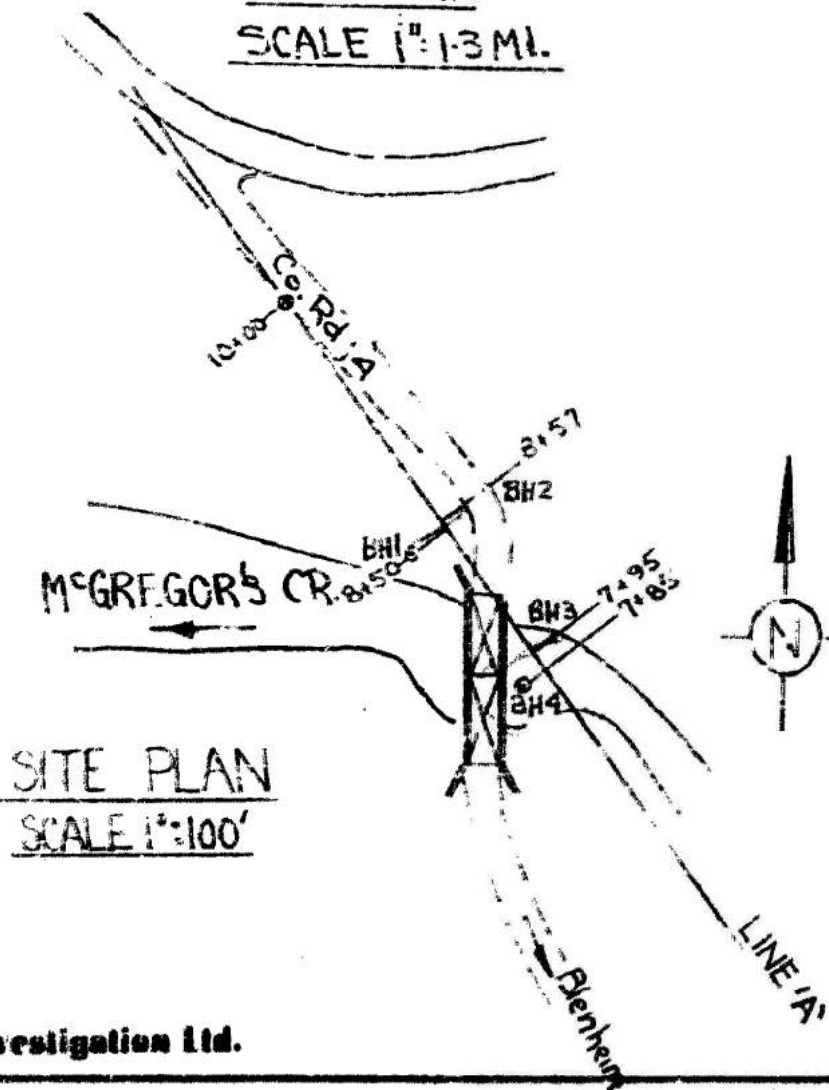
409900 E

4692700 N

Enclosure No. 1



KEY PLAN
SCALE 1" = 1.3 MI.



SITE PLAN
SCALE 1" = 100'

Demirion Soil Investigation Ltd.

Engineering Data Sheet for Borehole 1 of 4 - Sheet 1 of 2

Date: Jan. 27, 1960.

Demirion Soil Investigation Ltd.

Engineering Data Sheet for Borehole:

Project: Bridge across McGregor's Creek
 Location: Co. M. 14, Harwich Twp., Kent
 Station: Sta. 8+60 - 25' left.
 Elevation and Datum: 591.3
 Add Supervisor: PL & AK Prep: P.L.
 Checked: C.I.

LEGEND
 Shear Strength (C)
 Unconfined compression
 Penetration Resistance (P)
 2" Sph. tube
 2" Dia. Cone
 Casing

Sampling Method
 2" Dia. split tube
 2" Shelby tube

LEGEND
 Consistency
 Natural moisture and
 Liquid Index (LI)
 Liquid limit
 Plastic limit

Sampling Method
 2" Dia. split tube
 2" Shelby tube

DESCRIPTION

ELEV.
FEETDEPTH
FEET

STRENGTH AND PENETRATION RESISTANCE

MOISTURE CONTENT, % DRY WEIGHT

SAMPLE
NATURAL
UNIT WT.
P.C.F.

REMARKS

Ground level

Coarse grey silt, some sand, V.L. trace grey, trace organic matter, some iron stain, moist.

Loose coarse grey silt, some sand, trace organic fibre.

Grey coarse silt, some sand, some organic matter, iron-stained, moist.

Very loose med.-fine alluvial sand, dark grey, some silt, some white calcareous material, trace organic fibre, moist.

Med. dense grey till

Grey till

Same as above

Grey till - increased silt content. Denser from 24 1/2

Dark grey very coarse sand, fine grey, black shale, quartz, fine feldspar - loose.

Med. dense grey till

Med. dense grey sandy till: predominant fine and coarse sand, some gravel, moist.

Continued on Enclosure #3

594.34

35.0

0

20

40

60

80

100

120

140

160

180

200

220

240

260

280

300

320

340

360

380

400

420

440

460

480

500

520

540

560

580

600

620

640

660

680

700

720

740

760

780

800

820

840

860

880

900

920

940

960

980

1000

1020

1040

1060

1080

1100

1120

1140

1160

1180

1200

1220

1240

1260

1280

1300

1320

1340

1360

1380

1400

1420

1440

1460

1480

1500

1520

1540

1560

1580

1600

1620

1640

1660

1680

1700

1720

1740

1760

1780

1800

1820

1840

1860

1880

1900

1920

1940

1960

1980

2000

2020

2040

2060

2080

2100

2120

2140

2160

2180

2200

2220

2240

2260

2280

2300

2320

2340

2360

2380

2400

2420

2440

2460

2480

2500

2520

2540

2560

2580

2600

2620

2640

2660

2680

2700

2720

2740

2760

2780

2800

2820

2840

2860

2880

2900

2920

2940

2960

2980

3000

3020

3040

3060

3080

3100

3120

3140

3160

3180

3200

3220

3240

3260

3280

3300

3320

3340

3360

3380

3400

3420

3440

3460

3480

3500

3520

3540

3560

3580

3600

3620

3640

3660

3680

3700

3720

3740

3760

3780

3800

3820

3840

3860

3880

3900

3920

3940

3960

3980

4000

4020

4040

4060

4080

4100

4120

4140

4160

4180

4200

4220

4240

4260

4280

4300

4320

4340

4360

4380

4400

4420

4440

4460

4480

4500

4520

4540

4560

4580

4600

4620

4640

4660

4680

4700

4720

4740

4760

4780

4800

4820

4840

4860

4880

4900

4920

4940

4960

4980

5000

5020

5040

5060

5080

5100

5120

5140

5160

5180

5200

5220

5240

5260

5280

5300

5320

5340

5360

5380

5400

5420

5440

5460

5480

5500

5520

5540

5560

5580

5600

5620

5640

5660

5680

5700

5720

5740

5760

5780

5800

5820

5840

5860

5880

5900

5920

5940

5960

5980

6000

6020

6040

6060

6080

6100

6120

6140

6160

6180

6200

6220

6240

6260

6280

6300

6320

6340

6360

6380

Dominion Soil Investigation Ltd.

Engineering Data Sheet for Borehole of 4 - Sheet 2 of 2

Dominion Soil Investigation Ltd.

Engineering Data Sheet for Borehole:

Date: Jan. 27, 60.

Project: Bridge across McGregor's Creek
 Location: Co. Rd. 14, Harwich Centre, Ont.
 Hole Location: Sta. 8+60 - 25' Left.
 Hole Elevation and Datum: 591.3
 Field Supervisor: P.L. & AK Prep: P.L.
 Driller: C.I. Checked:

LEGEND

Shear Strength (C)
 Vane test and sensitivity (S)
 Penetration Resistance (P)
 2" Split tube
 2" Dia. Cone
 Casing

Sampling Method
 2" Dia. split tube
 2" Shelby tube

Consistency
 Natural moisture content
 Liquid limit
 Plastic limit

Consistency
 X LI
 -O
 L

Sampling Method
 2" Dia. split tube
 2" Shelby tube

Consistency
 X LI
 -O
 L

STATION

DESCRIPTION

ELEV.
FEETDEPTH
FEETSTRENGTH AND PENETRATION RESISTANCE
P.S.F.CONSISTENCY
MOISTURE CONTENT, % DRY WEIGHTSAMPLE
NATURAL
UNIT WT.
P.C.F.

REMARKS

CONTINUED FROM ENCLOSURE #2
 Red, dense grey sandy till:
 predominantly med.-coarse sand,
 some gravel, moist.

554.3

35.0

SS8

Dense grey fine sand.
 5" layer of grey fine sand.

552.34

40.0

SS9

END OF B.H.

Dominion Soil Investigation Ltd.

Engineering Data Sheet for Borehole 2 - Sheet 1 of 2

Date: Jan. 23, 60.

Dominion Soil Investigation Ltd.

Engineering Data Sheet for Borehole

Project: McGregor's Creek Bridge
 Location: Co. Rd. 14, Barwick Centre, Ont.
 Hole Location: Sta. 8+57 - 21' Rt. of Line 'A'
 Hole Elevation and Depth: 599.0
 Field Supervisor: P.L. & A.K. Prep:
 Driller: C.I. Checked: P.L.

LEGEND
 Shear Strength (C)
 Unclassified compression
 Vane test and sensitivity (S)
 Penetration Resistance (P)
 2" Split tube
 2" Dia. Cone
 Casing

Sampling Method
 2" Dia. split tube
 2" Shelby tube

LEGEND
 Consistency
 Natural moisture and
 Liquidity Index (LI)
 Liquid limit
 Plastic limit

Sampling Method
 2" Dia. split tube
 2" Shelby tube

Sampling Method
 2" Dia. split tube
 2" Shelby tube

SYMBOL

DESCRIPTION

ELEV.
FEETDEPTH
FEETSTRENGTH AND PENETRATION RESISTANCE
P.S.F.
BLOWS/FTCONSISTENCY
MOISTURE CONTENT, % DRY WEIGHTSAMPLE
UNIT WT.
P.C.F.NATURAL
UNIT WT.
P.C.F.

REMARKS

Ground level

Brown clay, fine-med. sand, chunks of grey fill, coarse gravel, some organic fibre, iron-stained, moist.

599.0

0.0

Fill - same as above.

V.M.L.

590.6

5.0

Still blue-grey clay, some silt, trace organic fibre, iron-stained trace fine gravel.

588.7

10.0

Alluvium, some clay, some silt, brown to grey, coarse gravel, etc. loose.

586.5

15.0

Loose coarse gravel (river material) Med. dense grey silty fill, some clay, some gravel, trace coarse sand.

581.5

20.0

580.5

25.0

Same as above.

30.0

Same as above, but more plastic and very clayey.

35.0

CONTINUED ON ENCLOSURE #5

Deminion Soil Investigation Ltd.

Engineering Data Sheet for Borehole: 2 - Sheet 2 of 2

Date: Jan. 28, 60.

Deminion Soil Investigation Ltd.

Engineering Data Sheet for Borehole:

Project: McGregor's Creek Bridge
 Location: Co. Rd. 14, Hartsch Centre, Ont.
 Hole Location: Sta. 8457 - 21' R.L. of A
 Hole Elevation and Datum: 599.0
 Field Supervisor: P.L. & A.K. Prep: P.L.
 Driller: C.I. Checked:

LEGEND
 Shear Strength (C)
 Undrained compression
 Vane test and sensitivity (S)
 Penetration Resistance (P)
 2" Split tube
 2" Dia. Cone
 Casing

Sampling Method
 2" Dia. split tube
 2" Shelby tube

LEGEND
 Consistency
 Natural moisture and
 Liquid limit
 Plastic limit

X U
 L

Sampling Method
 2" Dia. split tube
 2" Shelby tube

SYMBOL

DESCRIPTION

ELEV.
FEETDEPTH
FEET

STRENGTH AND PENETRATION RESISTANCE

MOISTURE CONTENT, % DRY WEIGHT

SAMPLE UNIT WT.
P.C.F.

REMARKS

CONTINUED FROM ENCLOSURE #4

564.0

35.0

0 20 40 60 80

SS7

Med. dense grey till, very clayey.

560.0

40.0

Dominion Soil Investigation Ltd.

Engineering Data Sheet for Borehole: 3

Dominion Soil Investigation Ltd.

Engineering Data Sheet for Borehole:

Project: McGregor's Creek Bridge

Location: Co. Rd. 14, Harwich Twp.

Hole location: Sta. 7+85 - 15' left of line 'A'

Hole Elevation and Datum: 590.0

Field Supervisor: P.L. & A.K. Prep: P.L.

Driller: C.I. Checked:

LEGEND

Shear Strength (C)

Unit Unconfined compression

Vane test and sensitivity (S)

Penetration Resistance (P)

2" Split tube

2" Dia. Cone

Coring

Date: Jan. 29, 60.

LEGEND

Moisture

Natural moisture and

Liquidity Index (LI)

Plastic limit

Plastic limit

X LI

X LI

X LI

X LI

X LI

X LI

X LI

X LI

X LI

X LI

X LI

X LI

X LI

X LI

X LI

X LI

X LI

X LI

X LI

X LI

X LI

X LI

X LI

X LI

X LI

X LI

X LI

X LI

X LI

X LI

X LI

X LI

X LI

X LI

X LI

X LI

X LI

X LI

X LI

X LI

X LI

X LI

X LI

X LI

X LI

X LI

X LI

X LI

X LI

X LI

X LI

X LI

X LI

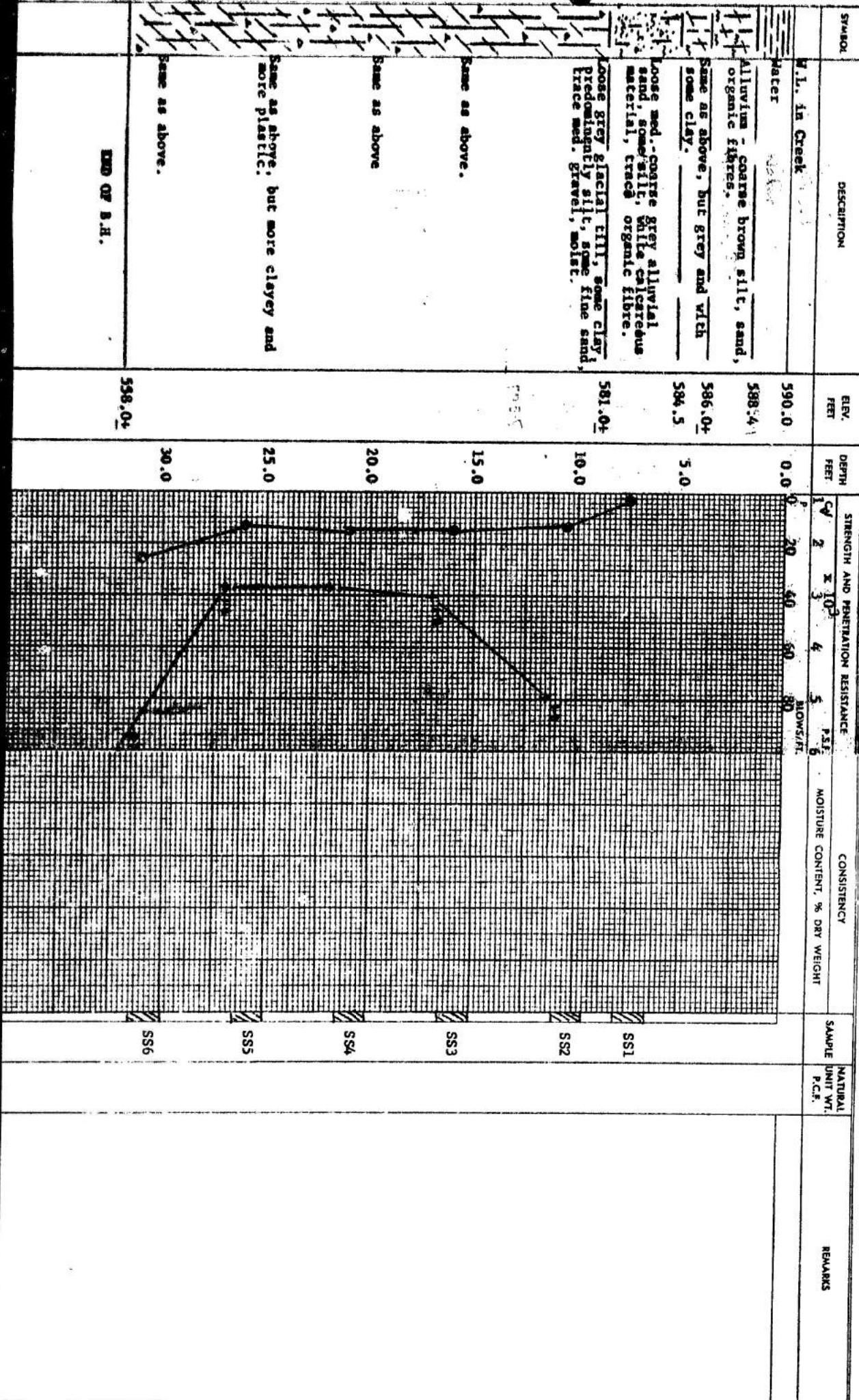
X LI

X LI

X LI

Sampling Method
2" Dia. split tube
2" Shelby tubeNATURAL
UNIT WT.
P.C.F.

REMARKS



Dominion Soil Investigation Ltd.

Engineering Data Sheet for Borehole 404

Date: Jan. 30, 40.

Dominion Soil Investigation Ltd.

Engineering Data Sheet for Borehole:

Project: McGregor's Creek Bridge
 Location: Q. 14, Barville, Kent
 Hole Location: Sta. 7+95 - 17' at center of bridge
 Hole Elevation and Datum: 591.0
 Field Supervisor: P. L. & M. K. Prep.: P. L.
 Driller: C. I. Checked:

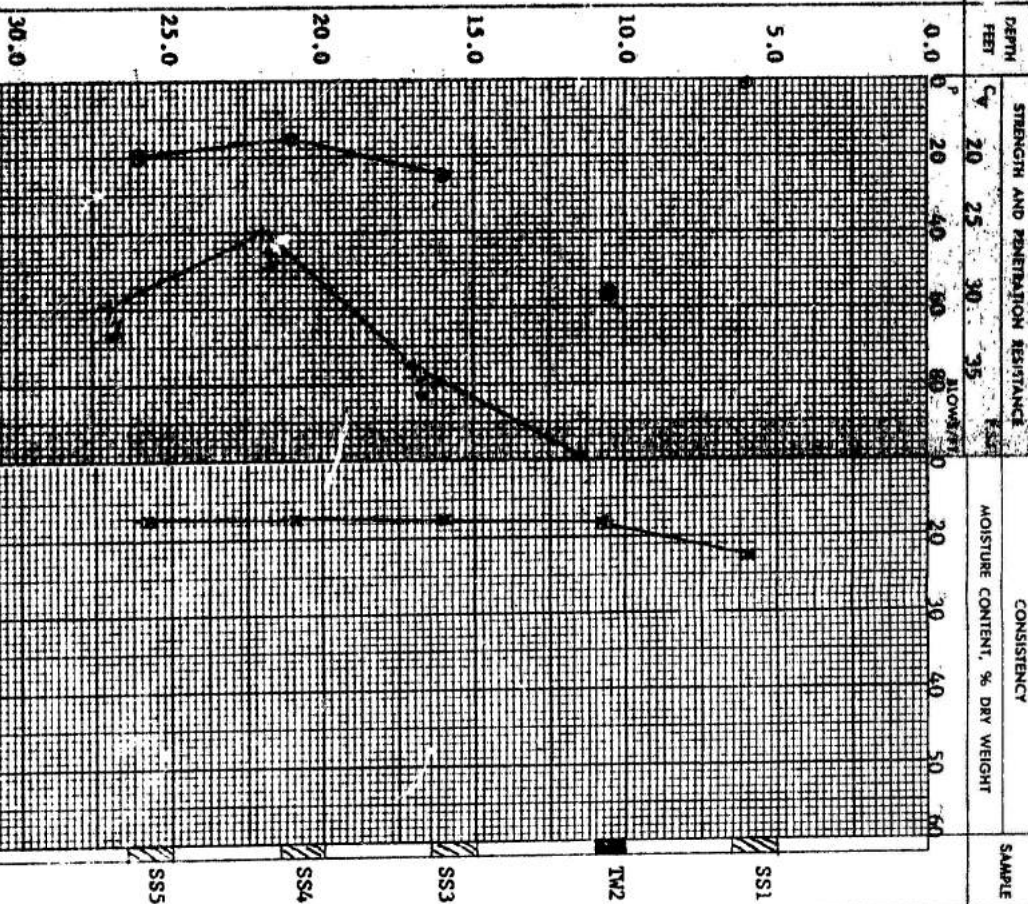
LEGEND
 Shear Strength (C)
 Discarded compression
 Vane test and sensitivity (S)
 Penetration Resistance (P)
 2" Split tube
 2" Dia. Cone
 Casing

Sampling Method
 2" Dia. split tube
 2" Shelby tube

LEGEND
 Moisture
 Natural moisture and
 Liquidity Index (LI)
 Liquid limit
 Plastic limit

Sampling Method
 2" Dia. split tube
 2" Shelby tube

SYMBOL	DESCRIPTION	ELEV. FEET	DEPTH FEET
	Creek level	591.0	0.0
	Water		
	Coarse brown silt, some sand, trace organic fibre.	589.0+	
	Coarse dark grey silty sand, coarse, some silt, some calcareous material, trace organic material.	585.0+	
	Coarse gravel.	581.0+	
	Med. dense grey silt till, some coarse-med. sand, some med. gravel.		
	Med. dense grey silt till, some clay, some med.-coarse gravel, moist.		
	Same as above, but moister, plastic.		
	Same as above		
	END OF B.H.	564.0+	

NATURAL
UNIT WT.
P.C.F.

REMARKS

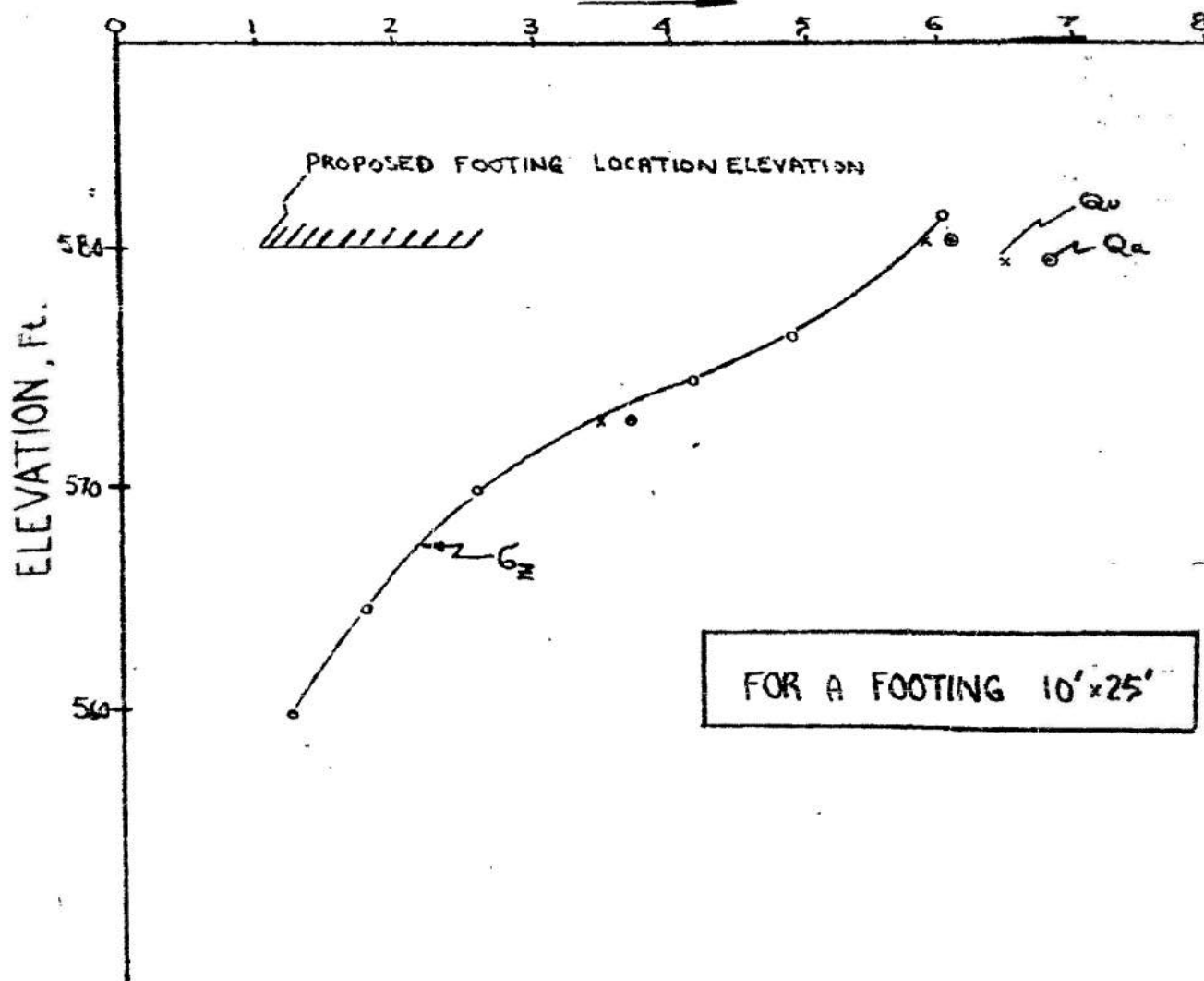
SUMMARY OF LABORATORY TEST RESULTS

Borehole & Sample No.	Elevation	Moisture Content%	W-pec	Uu (psf)	Strain	Liquid Limit	Plastic Limit	Plasticity Index
Borehole 1								
Sample 1	588.8	34.3						
" 2	585.3	52.0						
" 3	581.4	20.2						
" 4	579.55	17.4	133.0	6460	20%	42.3	25.1	17.2
" 5	572.80	18.1	130.6	3550	20%			
" 6	566.80	15.6						
" 7	563.05	22.8						
" 8	556.3	8.9						
Borehole 4								
Sample 1	586	22.7						
" 2	581	18.3	132.0	5825	20%			
" 3	576	17.7						
" 4	571	17.3						
" 5	566	17.9						

Prep. By

STRESS & CAPACITY DISTRIBUTION GRAPH

STRESS VS ELEVATION

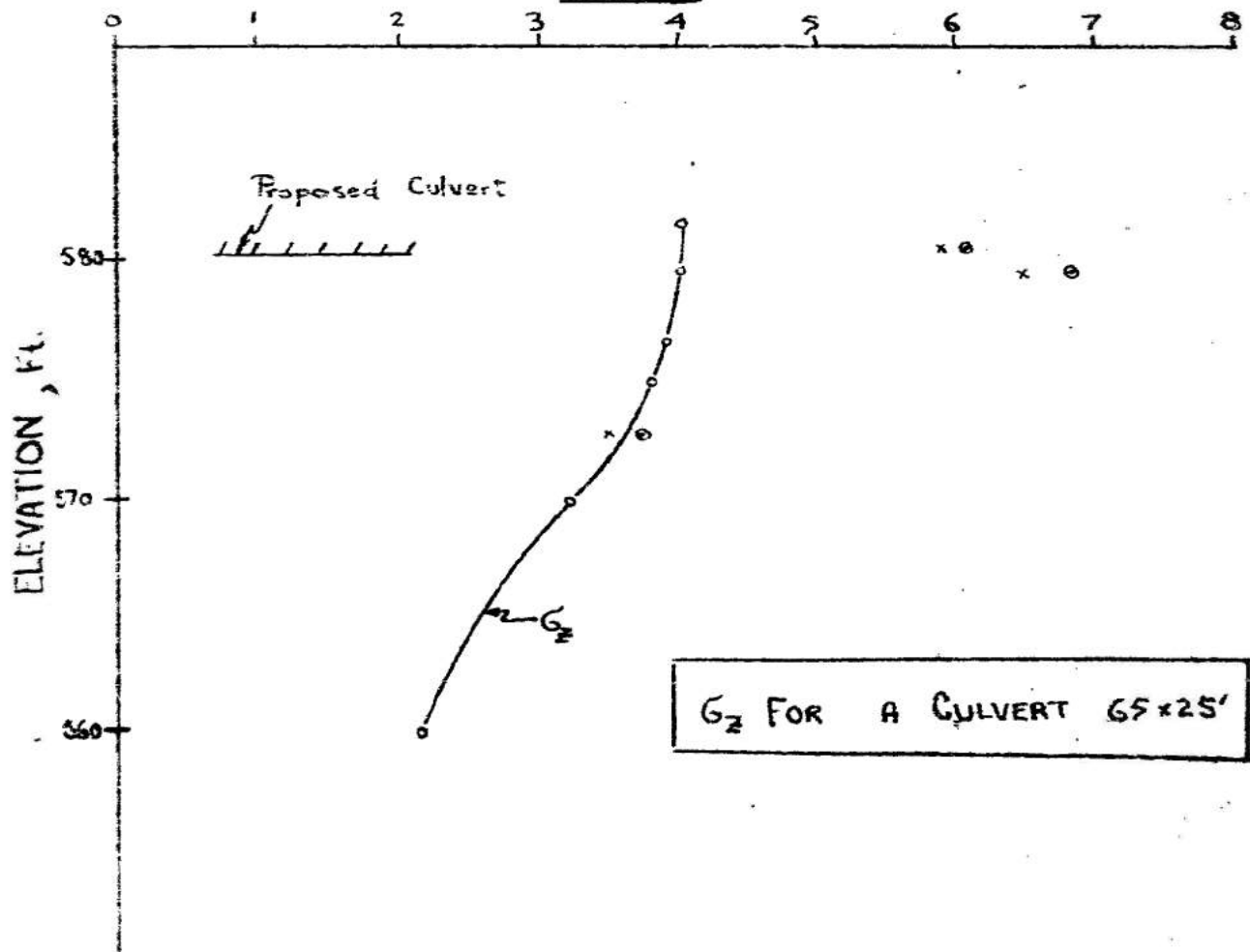
STRESS, PSF $\times 10^3$ LEGEND:

- - G_z - Boussinesq Vertical Stress Distribution Curve, psf.
- x Q_u - Unconfined Compression Results, psf.
- Q_a - Safe Allowable Bearing Capacity
 $= 0.95 Q_u (1 + 0.3 \frac{B}{L})$ where $\frac{B}{L} = \frac{10}{25}$

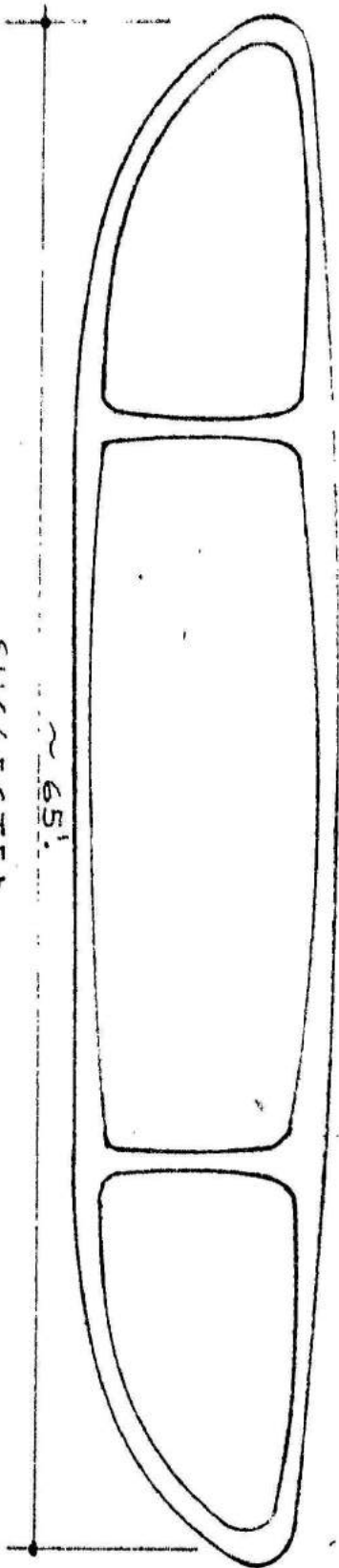
Prep. By

STRESS & CAPACITY DISTRIBUTION GRAPH

STRESS VS ELEVATION

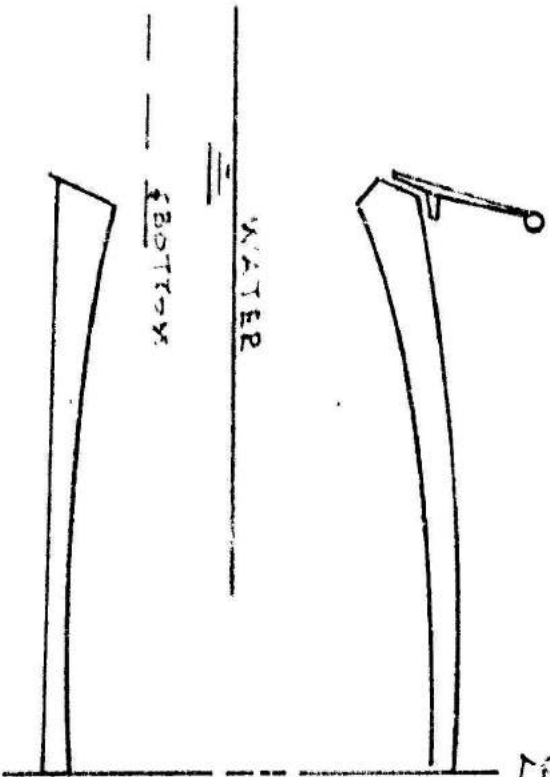
STRESS, $\text{PSF} \times 10^3$ LEGEND:

- G_z - Boussinesq Vertical Stress Distribution Curve, psf.
- x Q_u - Unconfined Compression Results, psf.
- ⊙ Q_a - Safe Allowable Bearing Capacity
 $= 0.95 Q_u (1 + 0.3 \frac{B}{L})$ where $\frac{B}{L} = \frac{25}{65}$



SUGGESTED
TRIPLE CULVERT.

— 2. —



SECTION.

See also
60-106

DOM. SOIL INV. LTD.
88 EGLINTON AVE. E.

FOUNDATION CALCULATIONSExplanation:

#1. Safe Allowable Bearing Capacity, Q_a , was calculated from the formula $Q_a = 0.95 Q_u (1 + 0.3 \frac{B}{L})$ where Q_u = unconfined compression test results.

#2. The Bearing Capacity was checked, based on a minimum Q_a i.e. Minimum Q_a was set = G_z in Boussinesq's Formula. The smaller bearing value of ① & ② was taken as safe bearing capacity under the footing.

#3. Curves were plotted, elevation vs stress - G_z , Q_u , Q_a

* Reference - Tschebotarioff, "Soil Mechanics, Foundations and Earth Structures" - p 217

For a 10' x 30' Footing

$$Q_a = 0.95 \times 6460 (1 + 0.3 \times \frac{10}{30}) = 6740 \text{ psf at elev. 580}$$

$$Q_a = 0.95 \times 3550 (1 + 0.3 \times \frac{10}{30}) = 3650 \text{ psf. at elev. 573}$$

$$Q_a \text{ at elev. 582.5} = 6080 \text{ psf. at elev. 581}$$

For a Culvert 65' x 25'

$$\text{where } \frac{B}{L} = \frac{25}{65}$$

$$Q_a \text{ at elev. 580} = 6340 \text{ psf}$$

$$Q_a \text{ at elev. 573} = 3760 \text{ psf}$$

$$Q_a \text{ at elev. 581} = 6170 \text{ psf}$$

Testing Minimum Q_a from above

- Footing placed at 582 or below

$$Z = 582 - 573 = 9'$$

$$b = 3'$$

$$a = 15' \quad \frac{a}{b} = 3 \quad \frac{Z}{b} = \frac{9}{3} = 1.8$$

$$4 \times G_z = 3650 \text{ psf}$$

$$G_z = 913 \text{ psf.}$$

$$\frac{G_z}{P} = 0.14$$

$$\text{Capacity, } P = \frac{G_z}{0.14} = \frac{913}{0.14} = 6520 \text{ psf.}$$

∴ Use 6080 as capacity for area at elev. 582.

For 65' x 25' Culvert -

Culvert bottom at 582'

$$z = 9' \quad b = 12.5 \quad \frac{q}{b} = 2.6 \quad \frac{z}{b} = \frac{9}{12.5} = .72$$

$$4 \times G_z = 3760 \text{ psf.}$$

$$G_z = 940 \text{ psf.}$$

$$\frac{G_z}{P} = 0.23$$

$$\text{Capacity, } P = \frac{940}{0.23} = 4080 \text{ psf.}$$

∴ Use 4080 as capacity for area at elev. 582

Boussinesq's Stress Distribution - 60-106

A Footing 10 x 20'

Elev.	z	z/b	$\frac{G_z}{P}$	$4 \times G_z$ psf
582	0	0	.25	6170 psf.
580	2	0.4	.242	5980 psf
577	5	1.0	.200	4920 "
575	7	1.4	.170	4260 "
570	12	2.4	.108	2660 psf
565	17	3.4	.075	1850 "
560	22	4.4	.056	1230 "

B Culvert 65' x 25'

Elev	z	z/b	$\frac{G_z}{P}$	$4 \times G_z$
582	0	0	0.25	4080 psf
580	2	0.16	0.250	4050 psf
577	5	0.40	0.242	3950 "
575	7	0.56	0.238	3880 "
570	12	0.96	0.205	3340 "
565	17			
560	22	1.76	0.140	2280 "

Appendix C

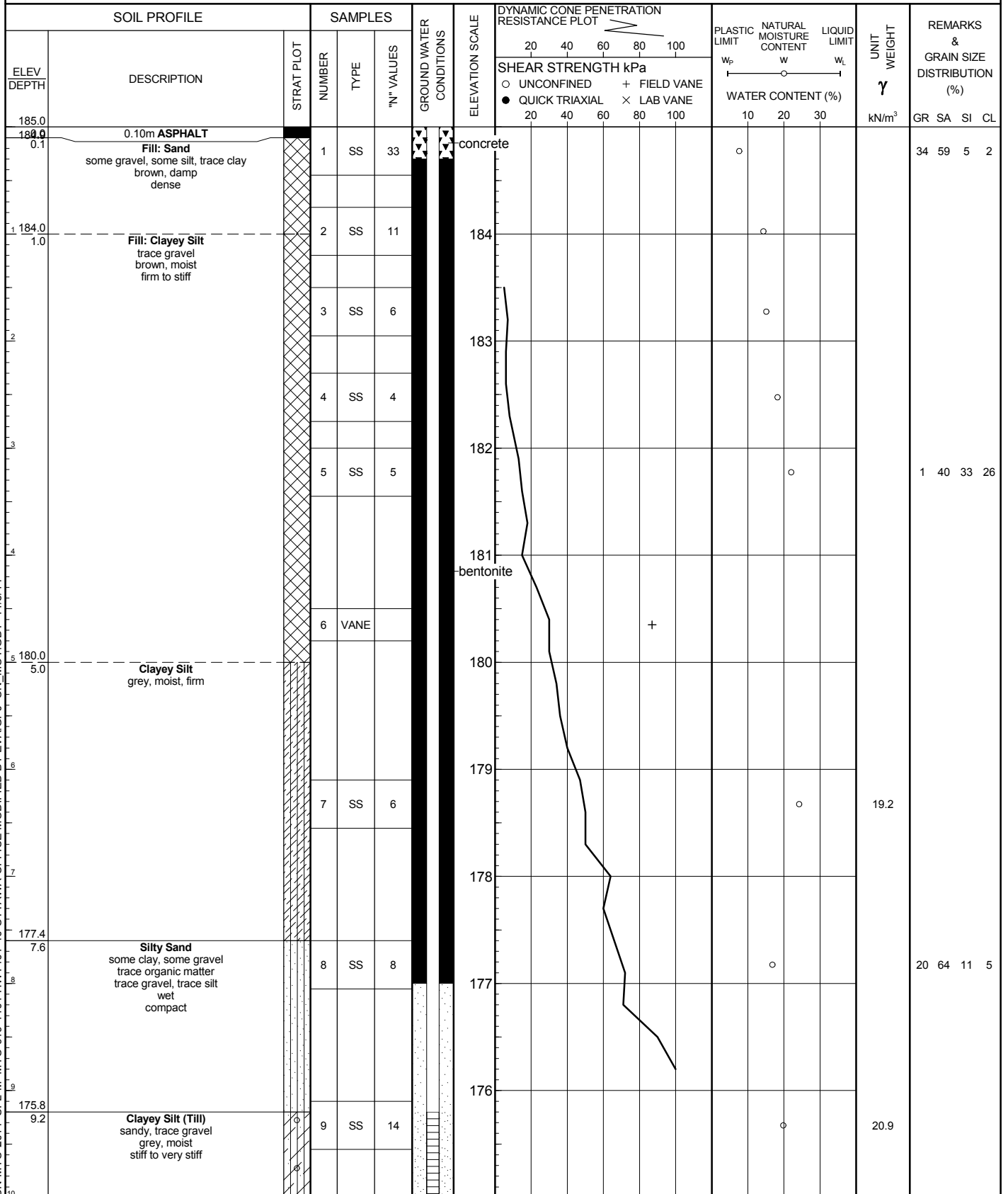
Borehole Logs (Record of Borehole Sheets)



RECORD OF BOREHOLE No BH13-168

METRIC 1 OF 4

W.P. 3093-09-00 LOCATION See Borehole Location Plan ORIGINATED BY PR
 DIST West Region HWY 40 BOREHOLE TYPE Hollow Stem Augers/Rock Coring COMPILED BY NT
 DATUM Geodetic DATE Sep/06/2011 CHECKED BY EP



Continued Next Page

GROUNDWATER ELEVATIONS

Measurement 1st 2nd 3rd 4th

+ 3, x 3: Numbers refer to Sensitivity $\circ \epsilon=3\%$ Strain at Failure

919-1101

ONL-MTO-2014 SPL-M-MTO-919-1101-HWY401-40-OTTAWA-OFFICE MODIFIED BY EVA.GPJ ON MOT.GDT 11/3/14

W.P.	3093-09-00	LOCATION	See Borehole Location Plan	ORIGINATED BY	PR
DIST	West Region HWY 40	BOREHOLE TYPE	Hollow Stem Augers/Rock Coring	COMPILED BY	NT
DATUM	Geodetic	DATE	Sep/06/2011	CHECKED BY	EP

SOIL PROFILE			SAMPLES			GROUND WATER CONDITIONS	ELEVATION SCALE	DYNAMIC CONE PENETRATION RESISTANCE PLOT			PLASTIC LIMIT W _p	NATURAL MOISTURE CONTENT W	LIQUID LIMIT W _L	UNIT WEIGHT γ kN/m ³	REMARKS & GRAIN SIZE DISTRIBUTION (%) GR SA SI CL			
ELEV DEPTH	DESCRIPTION	STRAT PLOT	NUMBER	TYPE	"N" VALUES			SHEAR STRENGTH kPa								WATER CONTENT (%)		
								○ UNCONFINED	+ FIELD VANE	● QUICK TRIAXIAL						× LAB VANE		
	Clayey Silt (Till) sandy, trace gravel grey, moist stiff to very stiff (continued)						W. L.	175.0 m										
			10	SS	10		sand	174										
11							screen	173										
12			11	SS	10			172										
13								171						21.0				
14			12	SS	14			170										
15								169										
16			13	SS	15			168							4 32 33 31			
168.2 16.8	Clayey Silt (Till) some gravel grey, moist hard		14	SS	30			167										
17								166										
18			15	SS	29										4 47 32 17			
19																		
20																		
21																		
22																		
23																		
24																		
25																		
26																		
27																		
28																		
29																		
30																		

ON-MTO-2014 SPL-M -MTO-919-1101-HWY401-40-OTTAWA-OFFICE MODIFIED BY EVA.GPJ ON MOT.GDT 11/3/14

Continued Next Page

GROUNDWATER ELEVATIONS

	1st	2nd	3rd	4th
Measurement				

+ 3, × 3: Numbers refer to Sensitivity ○ $\epsilon=3\%$ Strain at Failure

919-1101



RECORD OF BOREHOLE No BH13-168

METRIC 3 OF 4

W.P. 3093-09-00 LOCATION See Borehole Location Plan ORIGINATED BY PR
 DIST West Region HWY 40 BOREHOLE TYPE Hollow Stem Augers/Rock Coring COMPILED BY NT
 DATUM Geodetic DATE Sep/06/2011 CHECKED BY EP

SOIL PROFILE			SAMPLES			GROUND WATER CONDITIONS	ELEVATION SCALE	DYNAMIC CONE PENETRATION RESISTANCE PLOT		PLASTIC LIMIT w _p	NATURAL MOISTURE CONTENT w	LIQUID LIMIT w _L	UNIT WEIGHT γ	REMARKS & GRAIN SIZE DISTRIBUTION (%)
ELEV DEPTH	DESCRIPTION	STRAT PLOT	NUMBER	TYPE	"N" VALUES			SHEAR STRENGTH kPa						
								20 40 60 80 100	○ UNCONFINED + FIELD VANE					
								20 40 60 80 100	● QUICK TRIAXIAL × LAB VANE					

Continued Next Page

GROUNDWATER ELEVATIONS

Measurement 1st 2nd 3rd 4th

+ 3, × 3: Numbers refer to Sensitivity ○ ε=3% Strain at Failure

919-1101

ONL-MTO-2014 SPL-M-MTO-919-1101-HWY401-40-OTTAWA-OFFICE MODIFIED BY EVA.GPJ ON MOT.GDT 11/3/14



RECORD OF BOREHOLE No BH13-168

METRIC 4 OF 4

W.P. 3093-09-00 LOCATION See Borehole Location Plan ORIGINATED BY PR
 DIST West Region HWY 40 BOREHOLE TYPE Hollow Stem Augers/Rock Coring COMPILED BY NT
 DATUM Geodetic DATE Sep/06/2011 CHECKED BY EP

SOIL PROFILE			SAMPLES			GROUND WATER CONDITIONS	ELEVATION SCALE	DYNAMIC CONE PENETRATION RESISTANCE PLOT					PLASTIC LIMIT NATURAL MOISTURE CONTENT LIQUID LIMIT			UNIT WEIGHT γ	REMARKS & GRAIN SIZE DISTRIBUTION (%)
ELEV DEPTH	DESCRIPTION	STRAT PLOT	NUMBER	TYPE	"N" VALUES			20	40	60	80	100	W _p	W	W _L		
154.8 30.2	Shale fresh to slightly weathered, black TCR=100% SCR=100% RQD=100%																
153.2 31.8	End of Borehole Notes: 1) Piezometer installed to 13.7m upon completion of drilling. 2) Water level in Piezometer Date Depth (m) Elevation (m)																

GROUNDWATER ELEVATIONS

Measurement 1st 2nd 3rd 4th

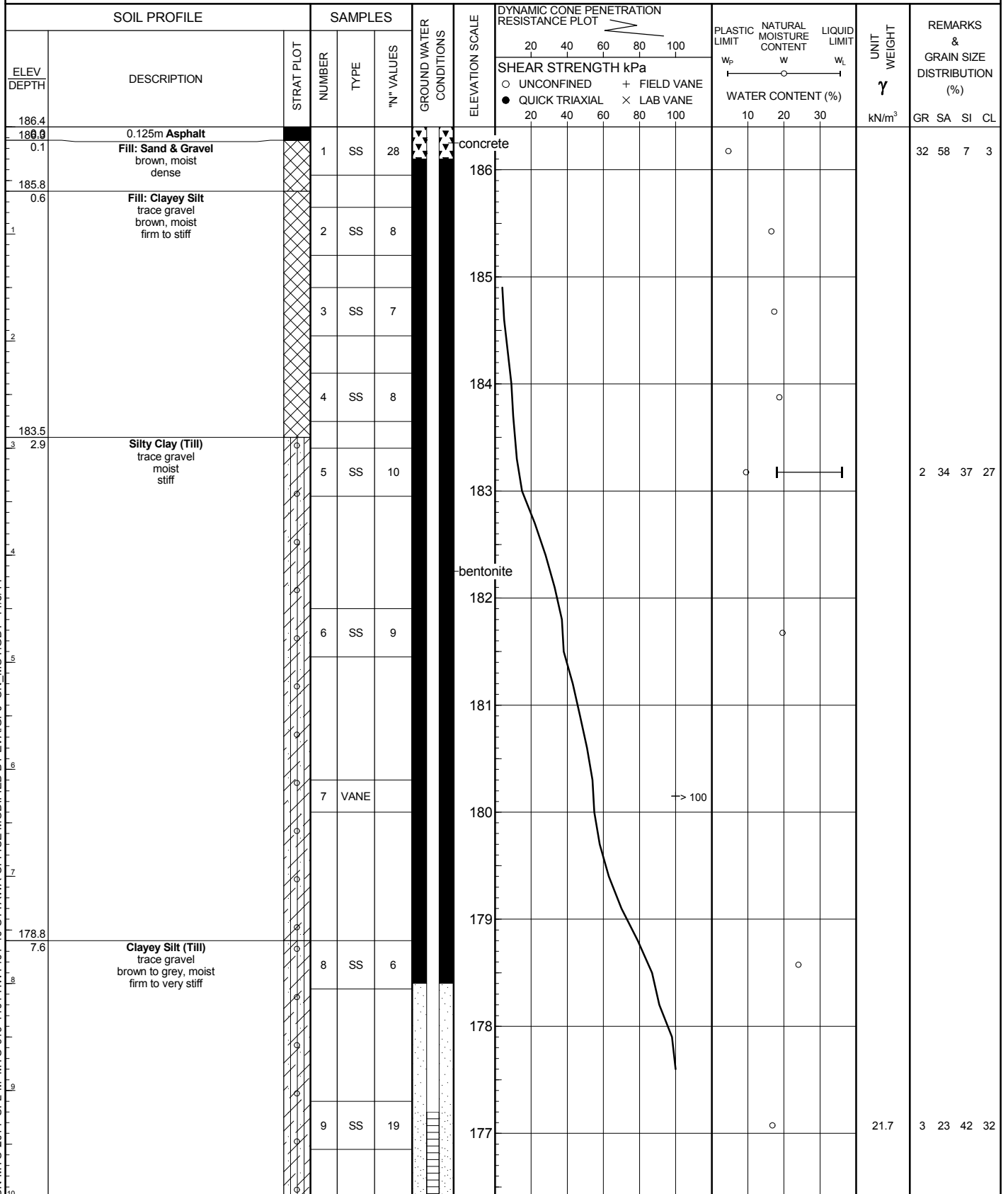
+ 3, X 3: Numbers refer to Sensitivity ○ $\epsilon=3\%$ Strain at Failure



RECORD OF BOREHOLE No BH13-524

METRIC 1 OF 4

W.P. 3093-09-00 LOCATION See Borehole Location Plan ORIGINATED BY PR
 DIST West Region HWY 40 BOREHOLE TYPE Hollow Stem Augers/Rock Coring COMPILED BY NT
 DATUM Geodetic DATE Sep/07/2011 CHECKED BY EP



Continued Next Page

GROUNDWATER ELEVATIONS
 Measurement 1st 2nd 3rd 4th

+ 3, × 3: Numbers refer to Sensitivity ○ ε=3% Strain at Failure

919-1101

ON-MTO-2014 SPL-M-MTO-919-1101-HWY401-40-OTTAWA-OFFICE MODIFIED BY EVA.GPJ ON MOT.GDT 11/3/14



RECORD OF BOREHOLE No BH13-524

METRIC 2 OF 4

W.P. 3093-09-00 LOCATION See Borehole Location Plan ORIGINATED BY PR
 DIST West Region HWY 40 BOREHOLE TYPE Hollow Stem Augers/Rock Coring COMPILED BY NT
 DATUM Geodetic DATE Sep/07/2011 CHECKED BY EP

SOIL PROFILE			SAMPLES			GROUND WATER CONDITIONS	ELEVATION SCALE	DYNAMIC CONE PENETRATION RESISTANCE PLOT		PLASTIC LIMIT NATURAL MOISTURE LIQUID LIMIT LIMIT CONTENT LIMIT w _p w w _L			UNIT WEIGHT γ kN/m ³	REMARKS & GRAIN SIZE DISTRIBUTION (%) GR SA SI CL
ELEV DEPTH	DESCRIPTION	STRAT PLOT	NUMBER	TYPE	"N" VALUES			SHEAR STRENGTH kPa		WATER CONTENT (%)				
								○ UNCONFINED + FIELD VANE ● QUICK TRIAXIAL × LAB VANE						
							20 40 60 80 100							
							20 40 60 80 100							

Continued Next Page

GROUNDWATER ELEVATIONS

Measurement 1st 2nd 3rd 4th

+ 3, × 3: Numbers refer to Sensitivity ○ ε=3% Strain at Failure

919-1101

ONL-MTO-2014 SPL-M-MTO-919-1101-HWY401-40-OTTAWA-OFFICE MODIFIED BY EVA.GPJ ON MOT.GDT 11/3/14

W.P.	3093-09-00	LOCATION	See Borehole Location Plan	ORIGINATED BY	PR
DIST	West Region HWY 40	BOREHOLE TYPE	Hollow Stem Augers/Rock Coring	COMPILED BY	NT
DATUM	Geodetic	DATE	Sep/07/2011	CHECKED BY	EP

[illegible]

Continued Next Page

+ 3, × 3: Numbers refer to Sensitivity ○ $\epsilon=3\%$ Strain at Failure

GROUNDWATER ELEVATIONS

	1st	2nd	3rd	4th
Measurement				



RECORD OF BOREHOLE No BH13-524

METRIC 4 OF 4

W.P. 3093-09-00 LOCATION See Borehole Location Plan ORIGINATED BY PR
 DIST West Region HWY 40 BOREHOLE TYPE Hollow Stem Augers/Rock Coring COMPILED BY NT
 DATUM Geodetic DATE Sep/07/2011 CHECKED BY EP

SOIL PROFILE		SAMPLES			GROUND WATER CONDITIONS	ELEVATION SCALE	DYNAMIC CONE PENETRATION RESISTANCE PLOT					PLASTIC LIMIT NATURAL MOISTURE CONTENT LIQUID LIMIT			UNIT WEIGHT γ	REMARKS & GRAIN SIZE DISTRIBUTION (%)
ELEV DEPTH	DESCRIPTION	STRAT PLOT	NUMBER	TYPE			"N" VALUES	SHEAR STRENGTH kPa					WATER CONTENT (%)			
						20	40	60	80	100	W _p	W	W _L			
						○ UNCONFINED + FIELD VANE ● QUICK TRIAXIAL × LAB VANE					10 20 30				GR SA SI CL	
156.1	Shale TCR=100% SCR=100% RQD=89%															
30.3																
155.3																
31.1	END OF BOREHOLE Notes: 1) Piezometer installed to 13.7m upon completion of drilling. 2) Water level in Piezometer Date Depth (m) Elevation (m) 10/18/11 11.56 174.84															

ON-MTO-2014 SPL-M-MTO-919-1101-HWY401-40-OTTAWA-OFFICE MODIFIED BY EVA.GPJ ON_MOT.GDT 11/3/14

GROUNDWATER ELEVATIONS
 Measurement 1st 2nd 3rd 4th

+ 3, × 3: Numbers refer to Sensitivity ○ $\epsilon=3\%$ Strain at Failure

919-1101

Appendix D

Explanation of Terms used in Report

Explanation of Terms Used in the Record of Borehole

Sample Type

AS	Auger sample
BS	Block sample
CS	Chunk sample
DO	Drive open
DS	Dimension type sample
FS	Foil sample
RC	Rock core
SC	Soil core
SS	Spoon sample
ST	Slotted tube
TO	Thin-walled, open
TP	Thin-walled, piston
WS	Wash sample

Penetration Resistance

Standard Penetration Resistance (SPT), N:

The number of blows by a 63.5 kg (140 lb) hammer dropped 760 mm (30 in) required to drive a 50 mm (2 in) drive open sampler for a distance of 300 mm (12 in).

WH – Samples sinks under “weight of hammer”

Dynamic Cone Penetration Resistance, N_d :

The number of blows by a 63.5 kg (140 lb) hammer dropped 760 mm (30 in) to drive uncased a 50 mm (2 in) diameter, 60° cone attached to “A” size drill rods for a distance of 300 mm (12 in).

Textural Classification of Soils

Classification	Particle Size
Boulders	> 200 mm
Cobbles	75 mm - 200 mm
Gravel	4.75 mm - 75 mm
Sand	0.075 mm – 4.75 mm
Silt	0.002 mm-0.075 mm
Clay	<0.002 mm

Coarse Grain Soil Description (50% greater than 0.075 mm)

Terminology	Proportion
Trace	0-10%
Some	10-20%
Adjective (e.g. silty or sandy)	20-35%
And (e.g. sand and gravel)	> 35%

Soil Description

a) Cohesive Soils(*)

Consistency	Undrained Shear Strength (kPa)	SPT “N” Value
Very soft	<12	0-2
Soft	12-25	2-4
Firm	25-50	4-8
Stiff	50-100	8-15
Very stiff	100-200	15-30
Hard	>200	>30

(*) Hierarchy of Shear Strength prediction

1. Lab triaxial test
2. Field vane shear test
3. Lab. Vane shear test
4. SPT “N” value
5. Pocket penetrometer

b) Cohesionless Soils

Density Index (Relative Density)	SPT “N” Value
Very loose	<4
Loose	4-10
Compact	10-30
Dense	30-50
Very dense	>50

Soil Tests

w	Water content
w _p	Plastic limit
w _l	Liquid limit
C	Consolidation (oedometer) test
CID	Consolidated isotropically drained triaxial test
CIU	consolidated isotropically undrained triaxial test with porewater pressure measurement
D _R	Relative density (specific gravity, G _s)
DS	Direct shear test
ENV	Environmental/ chemical analysis
M	Sieve analysis for particle size
MH	Combined sieve and hydrometer (H) analysis
MPC	Modified proctor compaction test
SPC	Standard proctor compaction test
OC	Organic content test
U	Unconsolidated Undrained Triaxial Test
V	Field vane (LV-laboratory vane test)
γ	Unit weight