

## **Appendix A – Site Photographs**



Photo 1. Hwy 672, looking north



Photo 2. Hwy 672, looking south





Photo 3. Looking east from the outlet of the culvert



Photo 4. Looking west from the inlet of the culvert





Photo 5. East (outlet) side of the embankment looking north



Photo 6. East (outlet) side of the embankment looking south



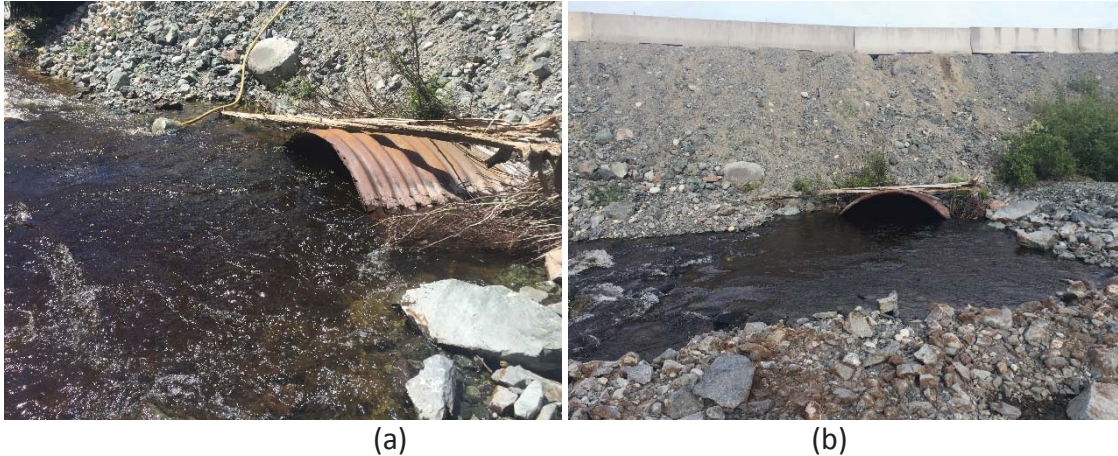


Photo 7. Water levels at outlet of existing culvert, (a) in June 2017 and (b) July 2017







Photo 9. West (inlet) side of the embankment looking south



Photo 10. Submerged inlet of existing culvert during Phase I investigation on June 2017



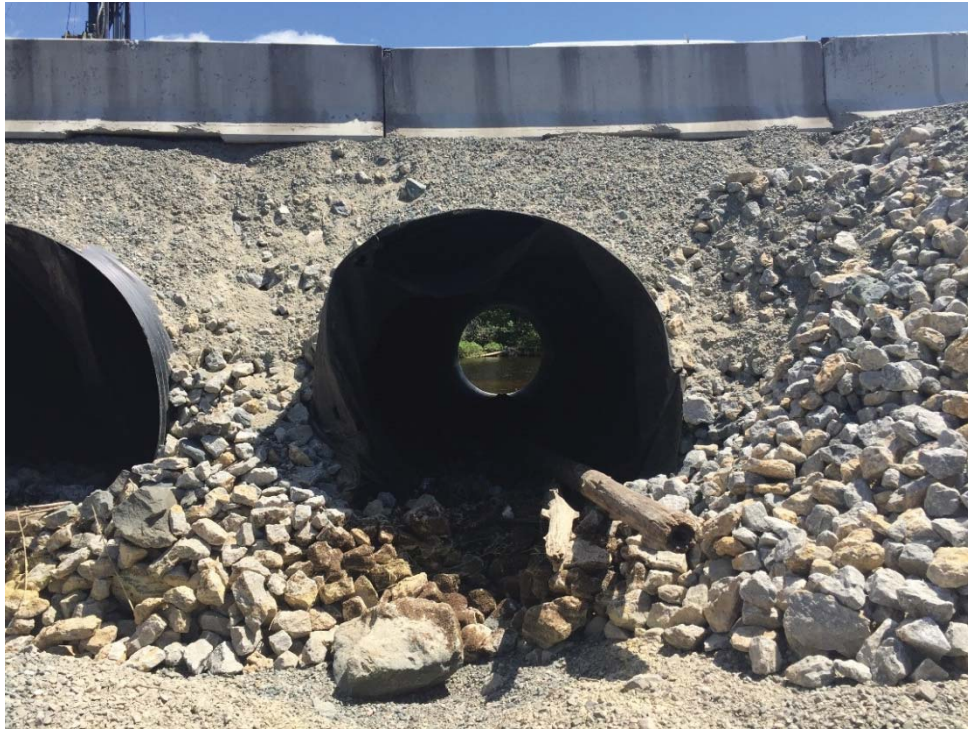


Photo 11. Temporary twin culvert, inlet side looking east



Photo 12. Water seepage through east(outlet) side of embankment north of existing culvert





Photo 13. Temporary modular bridge location looking south, note existing abutment



Photo 14. Crain lifting of barge and rig and placing them in water





Photo 15. Borehole BH-1 drilling using a barge



Photo 16. Benchmark HCP (101)