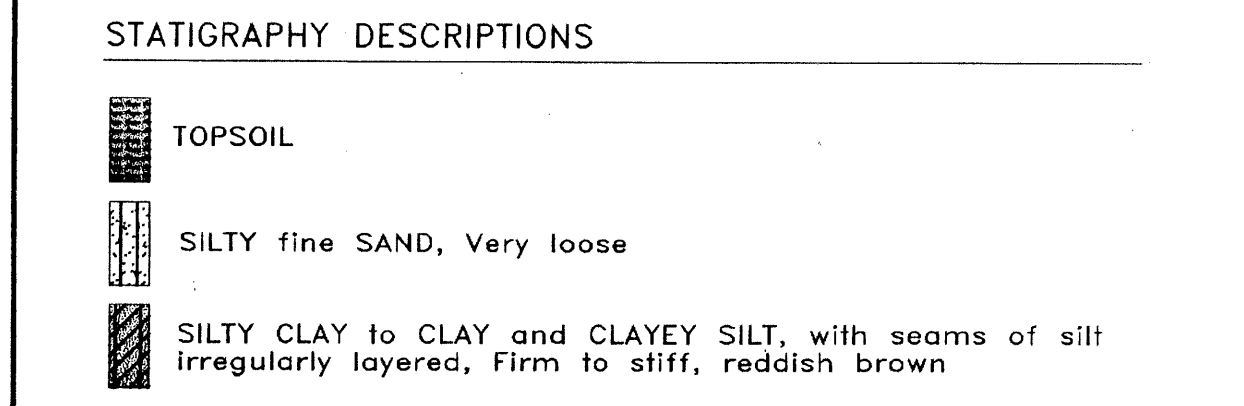
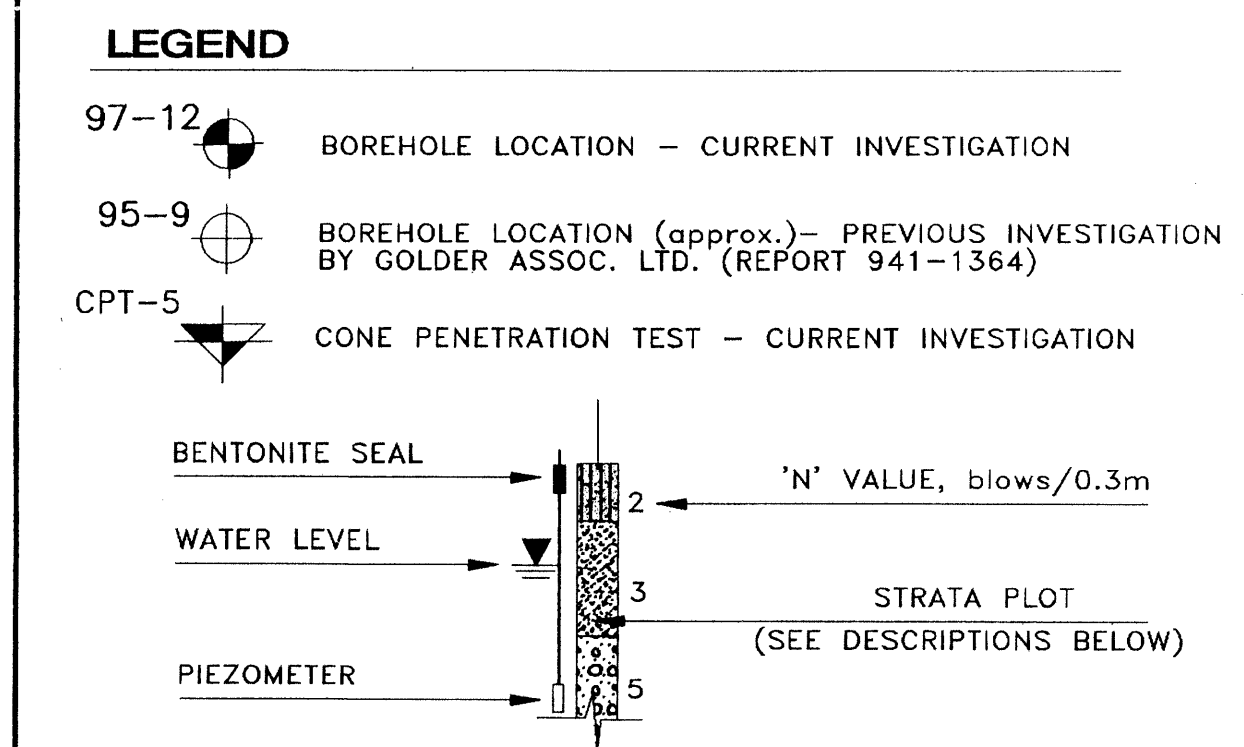
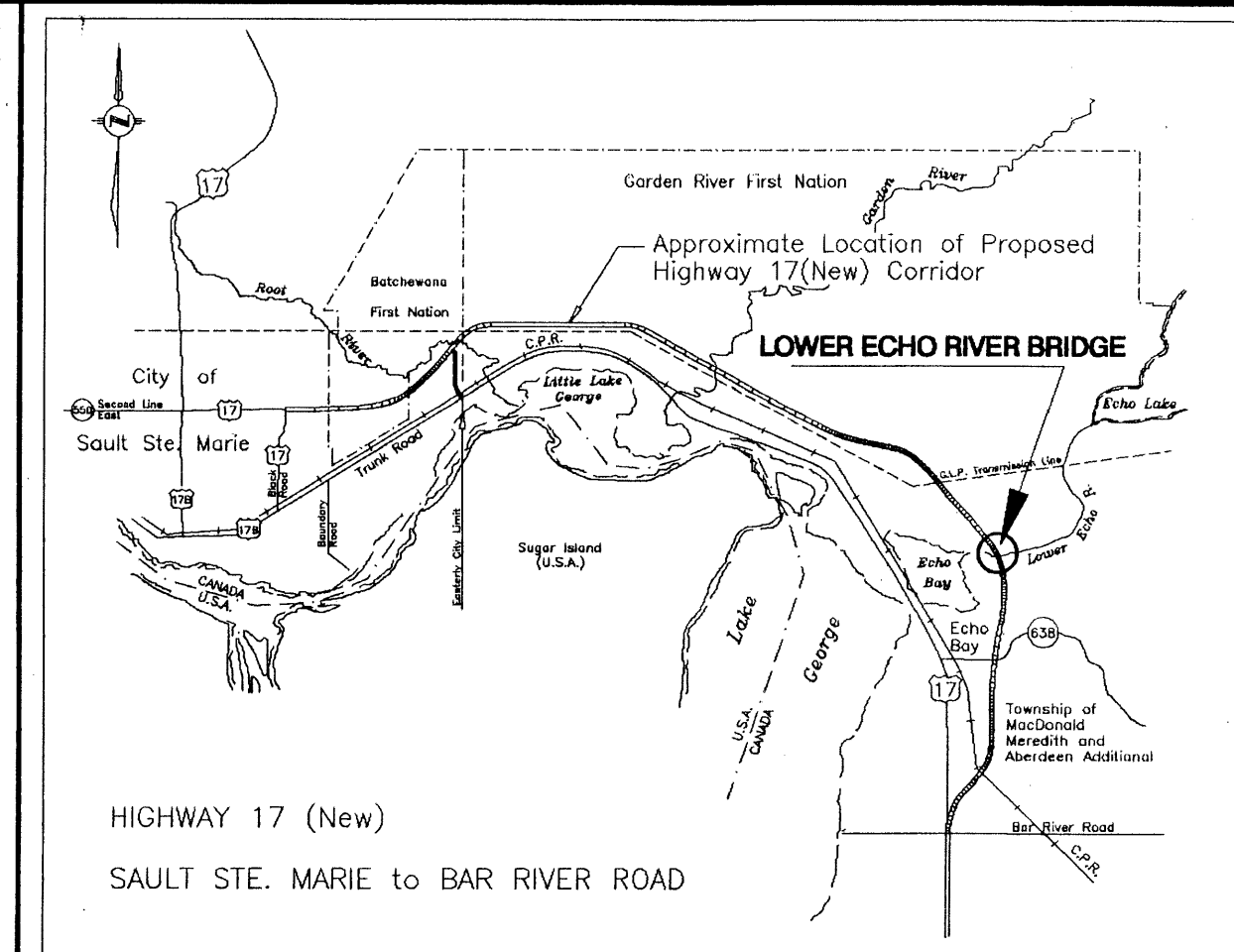
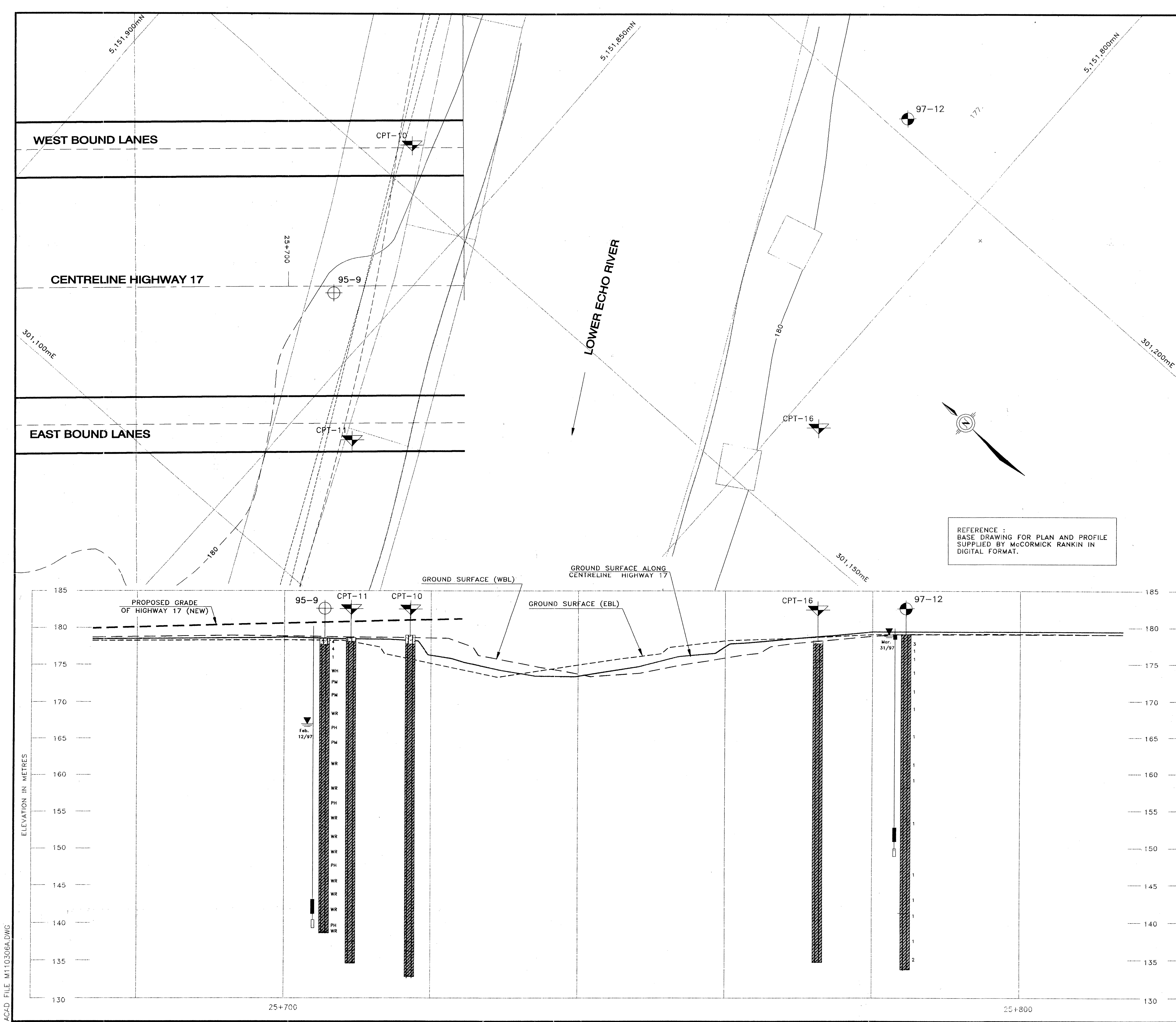
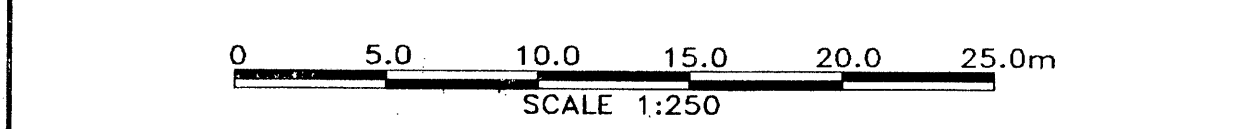


ACAD FILE M110306A.DWG



- NOTES :**
1. THIS DRAWING SHOULD BE READ IN CONJUNCTION WITH GEOTECHNICAL REPORT TITLED "GEOTECHNICAL INVESTIGATION, PROPOSED HIGHWAY 17 (NEW), ROOT RIVER TO LOWER ECHO RIVER, DISTRICT 18, SAULT STE. MARIE, ONTARIO", REPORT 971-1103, DATED JUNE 1997.
  2. THE STRATA PLOT IN SECTION INDICATES SIMPLIFIED SOIL STRATIGRAPHY ONLY. FOR DETAILED STRATIGRAPHIC DESCRIPTIONS, REFER TO RECORD OF BOREHOLE SHEETS IN REPORT 971-1103.
  3. GROUND SURFACE PROFILE, BOREHOLE ELEVATIONS AND LOCATIONS OBTAINED FROM MCCORMICK RANKIN CORPORATION.
  4. BOREHOLE DIAMETER IN PLAN AND WIDTH IN PROFILE ARE NOT TO SCALE.



NO.	DATE	REVISION	BY	CHK	ENG	APP

**Golder Associates Ltd.**  
MISSISSAUGA, ONTARIO, CANADA

**MCCORMICK RANKIN CORPORATION**  
MISSISSAUGA, ONTARIO

**HIGHWAY 17**

**PLAN AND PROFILE  
LOWER ECHO RIVER BRIDGE**

DRAWN: MHW	CHKD: AMP	6	
DATE: MARCH 16, 1997	PROJECT NO.: 971-1103		
DRAWING NUMBER			