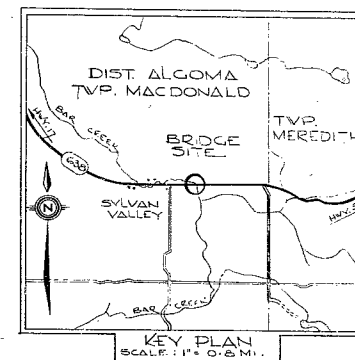
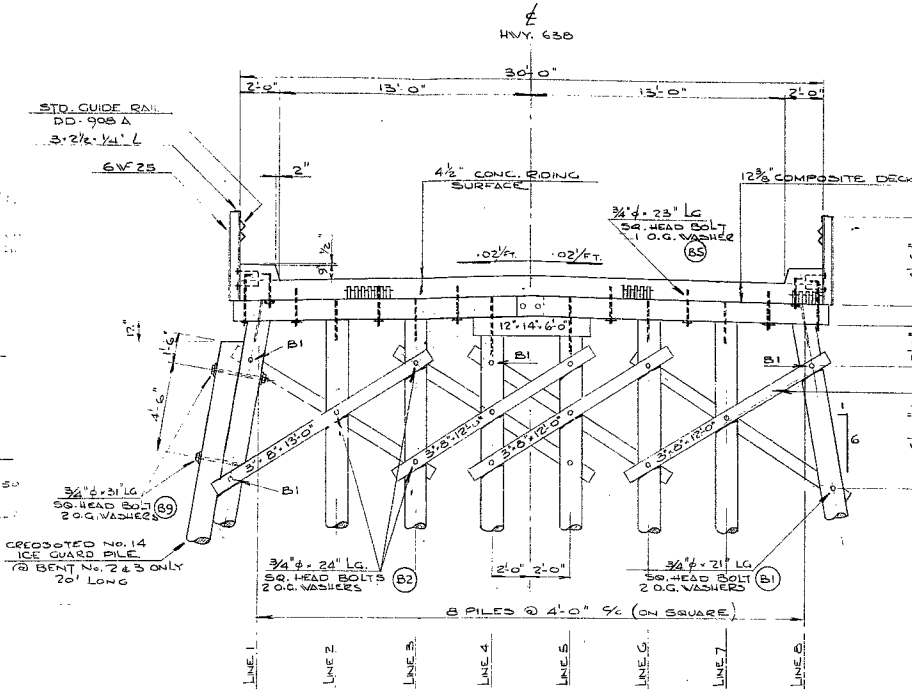
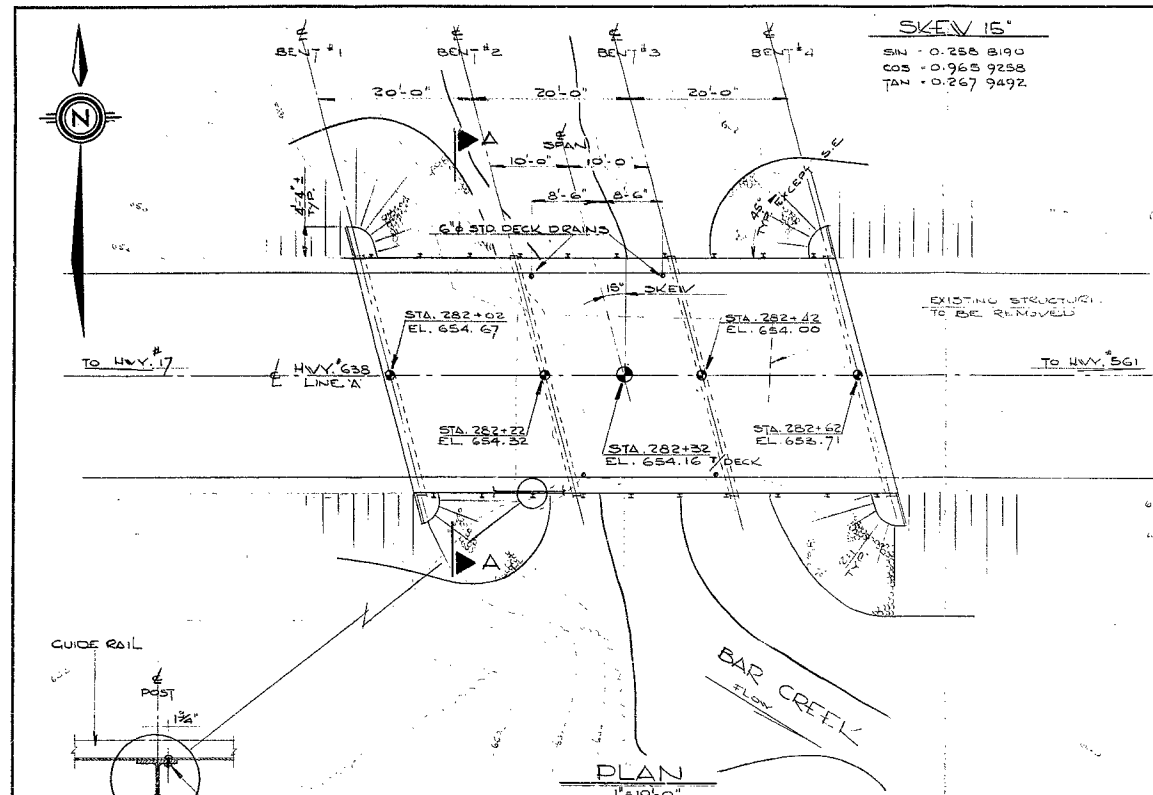


#68-F-77
WP #263-66-02
HWY #638
SYLVAN VALLEY
BRIDGE #3



NOTES

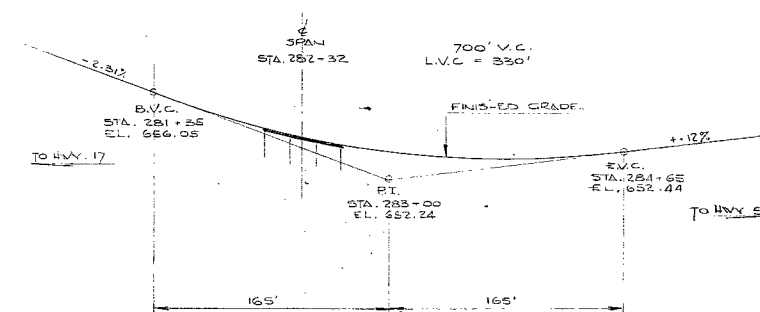
1. CLASS OF CONCRETE - 3000 PSI. @ 28 DAYS.
2. CLEAR COVER ON REINFORCING STEEL: 1 1/2" DECK SLAB.
3. APPROVED MIXTURES SUPPLIED BY THE CONTRACTOR WILL BE ADDED TO ALL CONCRETE AS SPECIFIED BY THE ENGINEER.
4. ALL HOLES FOR DRIFT PINS SHALL BE DRILLED IN THE FIELD AND SHALL BE 3/4" DIA. ALL HOLES FOR BOLTS SHALL BE DRILLED IN THE FIELD AND SHALL BE 1/8" LARGER IN DIAMETER THAN THE BOLT.
5. PRIOR TO CUTTING OFF PILES, THE CUT-OFF ELEVATIONS SHALL BE CHECKED BY THE ENGINEER IN THE FIELD TO ENSURE A TRUE GRADE ACROSS THE STRUCTURE.
6. DECK LAMINATIONS TO BE PLACED WITH DRESSED EDGE BEARING ON THE PILE CAPS. EACH STRIP TO BE PLACED VERTICALLY AND TIGHT AGAINST THE PRECEDING ONE.

LIST OF DRAWINGS

- D-6950-1 GENERAL PLAN
2 BENTS & DECK DETAILS
3 BILL OF MATERIALS
4 STANDARD DETAILS

B.M. 652.33
GEODETIC DATUM
N.E.V. IN ROOT 2" TWIN SPRUCE
78' LEFT STA. 278+26

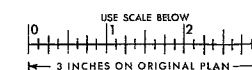
REVISIONS	DATE	BY	DESCRIPTION



LINE #	1	2	3	4	5	6	7	8
BENT #	1	2	3	4	5	6	7	8
1	652.36	652.42	652.48	651.58	651.56	652.42	652.32	652.22
2	652.00	652.06	652.12	651.22	651.21	652.07	651.98	651.88
3	651.68	651.74	651.81	650.91	650.89	651.76	651.66	651.57
4	651.38	651.45	651.51	650.62	650.60	651.47	651.37	651.28



FOR REDUCED PLAN



DEPARTMENT OF HIGHWAYS ONTARIO
BRIDGE OFFICE

68-177

SYLVAN VALLEY BRIDGE #3

KING'S HIGHWAY No. 638 DIST. No. 15
DIST. ALGOMA
TWP. MACDONALD LOT 24 & 25 CON. 17

GENERAL PLAN

APPROVED _____
BRIDGE ENGINEER

DESIGN W.V. CHECK V.F.B.
DRAWING W.V. CHECK V.F.B.
DATE MARCH '71 LOADING H.S. 20-44

SITE No. B.D. 5-121 W.P. No. 263-66-02
CONTRACT No. _____
DRAWING No. D-6950-1

PRINT RECORD	No.	FOR	DATE

