

54-F-215C

Oxford W. #1



"Franki Piles carry more tons per Pile"

FRANKI COMPRESSED PILE COMPANY OF CANADA LIMITED

1835 YONGE STREET

TORONTO 7, ONT.

CABLEGRAMS:
"FRANKIPILE"



TELEPHONE:
HUDSON 8-9009

Our Reference:
PG 330 OF 11754
October 29th, 1954.

SOIL INVESTIGATION REPORT for DEPARTMENT OF HIGHWAYS OF ONTARIO (W.M. Dillon, Consulting Engineers) at OXFORD W. #1.

As requested we carried out a soil investigation at the proposed bridge site, Oxford W. #1, at Highway #401 and the Swaburg road.

REPORT OF INVESTIGATION:

Six percussion tests were made at the location shown on the Location Sketch. The results are shown on the accompanying diagrams and are summarized as follows.

S U M M A R Y

Hole No.	Gr. Surface	Water Level	2,000 lbs per sq.ft.	3,000 lbs per sq.ft.	4,000 lbs per sq.ft.	Refusal
1	1003	985	1001	1001	990	973
2	1004	-	1002	996	992	989
3	1004	-	1003	1003	1003	990
4	996	982	994	987	986	960
5	996	982	994	992	991	966
6	1001	985	1000	997	996	984

Two auger borings were made at holes #3 and #4, with the following results.

LOG OF AUGER BORING

Hole #3.

Ground Surface Elevations 1004

0' - 2'	Fine sand, stoney
2' - 5'	Fine sand, stoney
5' - 9'	Very fine sand
9' - 11'	Hard silty very fine sand, stoney
11' - 14'	Hard silty very fine sand, stoney

October 29th, 1954.

- 2 -

Hole #4.

Ground Surface Elevation: 996

0' - 2'	Very fine sand, stoney
2' - 5'	Loamy very fine sand
5' - 9'	Brown sandy clay
9' - 15'	Silty fine sand, stoney
15' - 16'	Shelly tube sample
16' - 21'	Silty fine sand, wet
21' - 25'	Compact silty very fine sand, stoney
25' - 28'	Compact silty very fine sand, stoney
28' - 32'	Hard silty very fine sand, stoney
32' - 36'	Hard clayey sand, stoney

DISCUSSION

The highway embankment at this site is built on the side of a hill, which accounts for the deeper refusals to the South, as shown on the accompanying profile of test holes.

The ground level was on graded fill.

CONCLUSION

The West abutment can be based on 4000 psf material at elevation 990.

The East abutment can be based on 4000 psf material at elevation 986.



W. H. T. Wilson, P. Eng.

FRANKI

COMPRESSED PILE COMPANY
OF CANADA LIMITED

PERCUSSION TEST DIAGRAM

FOR: DEPARTMENT OF HIGHWAYS OF ONTARIO

AT: OXFORD W. #1

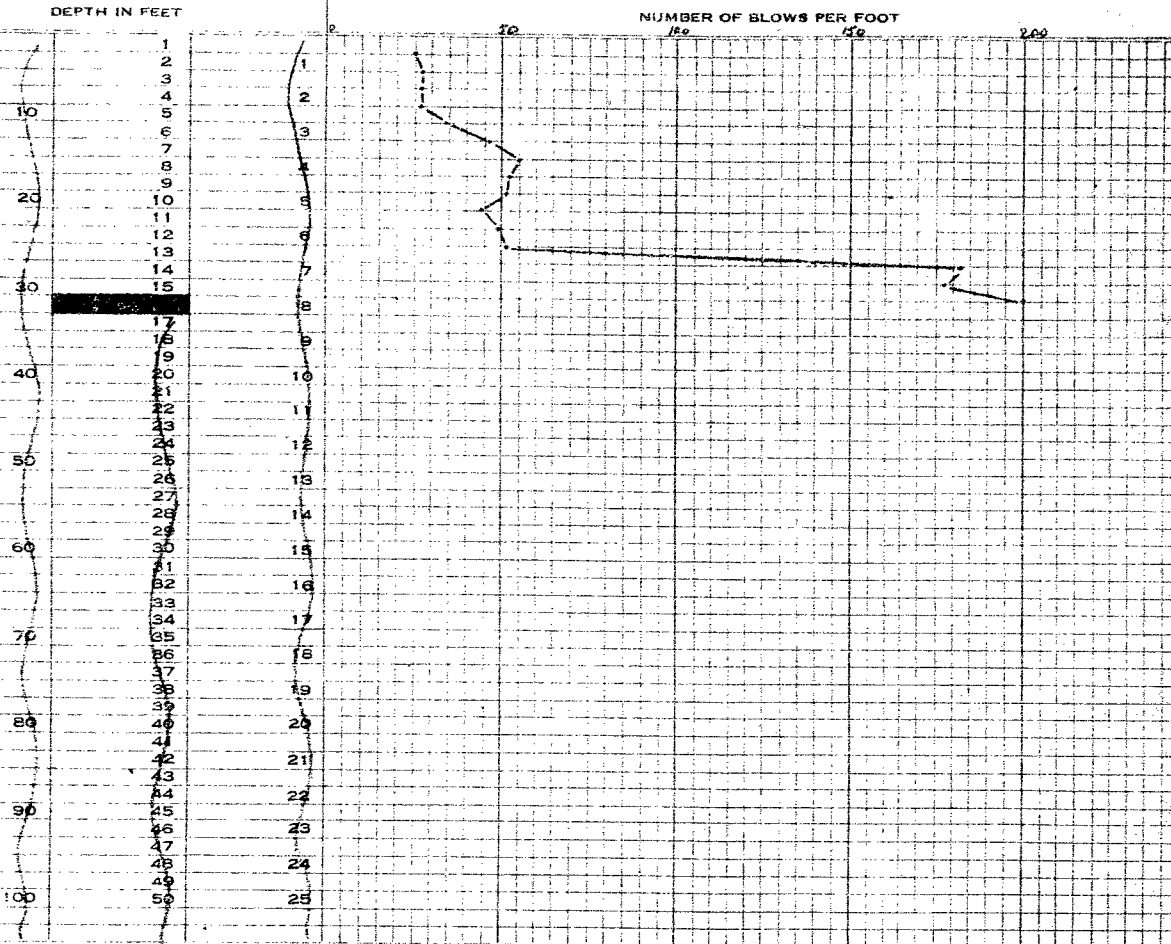
JOB NO. PC 320

DATE: OCTOBER 8, 1954.

TEST NO.: 2

WEIGHT OF HAMMER 225#

DROP: 3 FT.



Ground Surface Elevation 1004
Refusal Elevation 989
Number of Blows 200 per 6"

SIGNED

Donald J. Clough

FRANKI

COMPRESSED PILE COMPANY
OF CANADA LIMITED

PERCUSSION TEST DIAGRAM

FOR: DEPARTMENT OF HIGHWAYS OF ONTARIO

AT: OXFORD W. #1

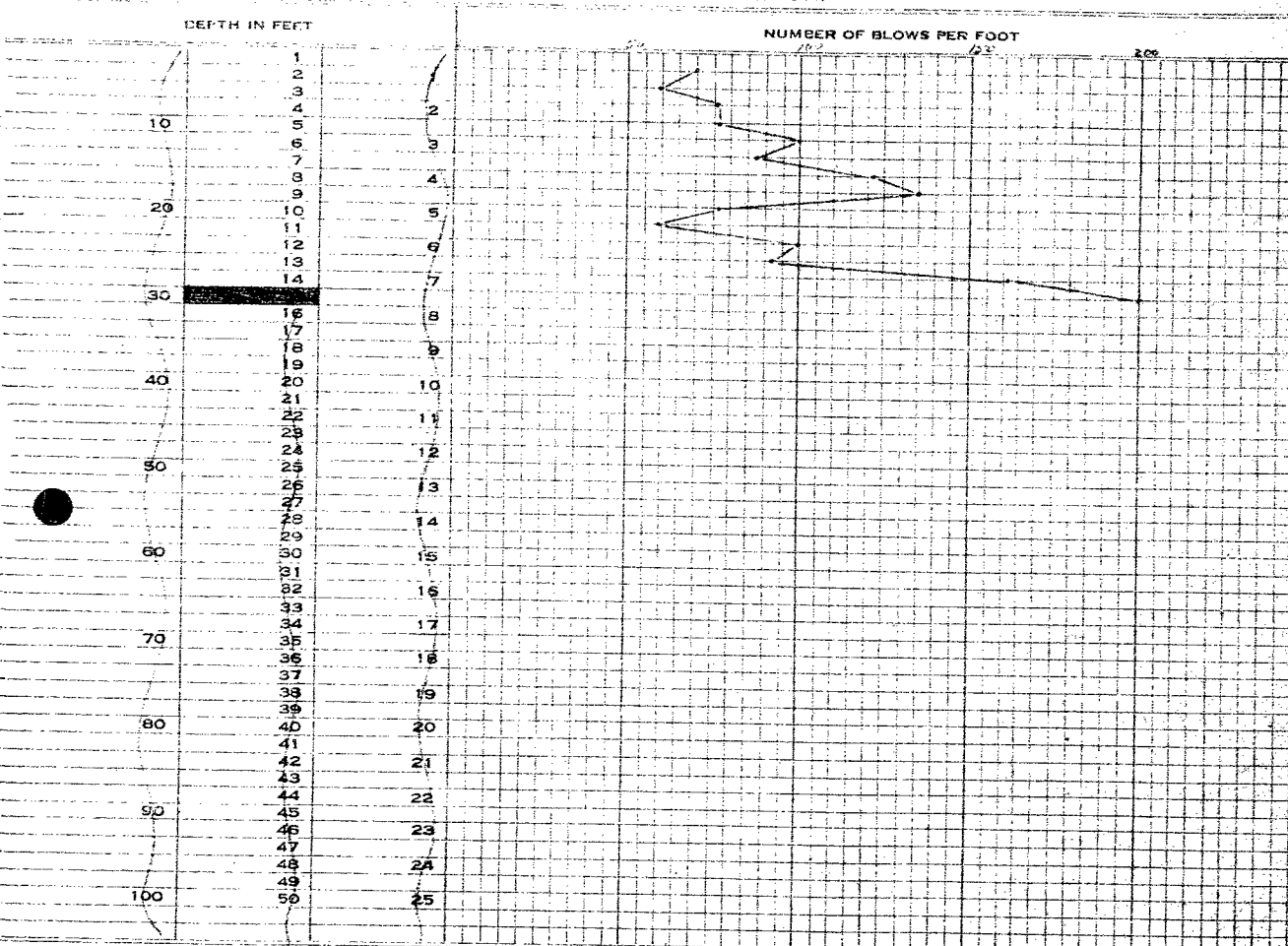
DATE: OCTOBER 7, 1954

JOB NO. PG 320

TEST NO.: 3

WEIGHT OF HAMMER 225#

DROP 3 FT.



Ground Surface Elevation 1004
Refusal Elevation 990
Number of Blows 200 for 2"

SIGNED

[Handwritten Signature]

FRANKI

COMPRESSED PILE COMPANY
OF CANADA LIMITED

PERCUSSION TEST DIAGRAM

FOR: DEPARTMENT OF HIGHWAYS OF ONTARIO

AT: OXFORD W. #1

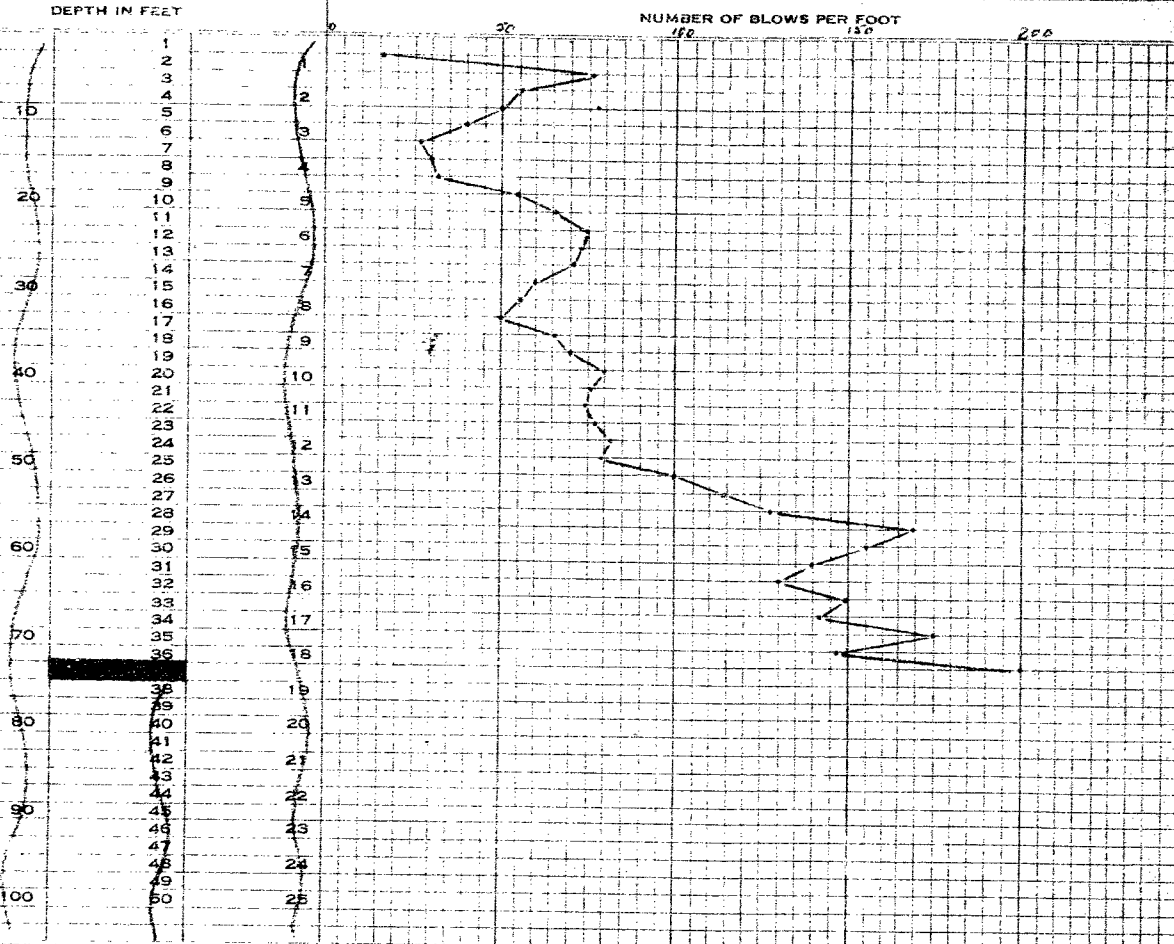
DATE: OCTOBER 13, 1954.

JOB NO. PC 320

TEST NO.: 4

WEIGHT OF HAMMER 225#

DROP 3 FT.



Ground Surface Elevation 996
Refusal Elevation 960
Number of Blows 200

SIGNED

Donald G. Clark

FRANKI

COMPRESSED PILE COMPANY
OF CANADA LIMITED

PERCUSSION TEST DIAGRAM

FOR: DEPARTMENT OF HIGHWAYS OF ONTARIO

AT: OXFORD W. #1

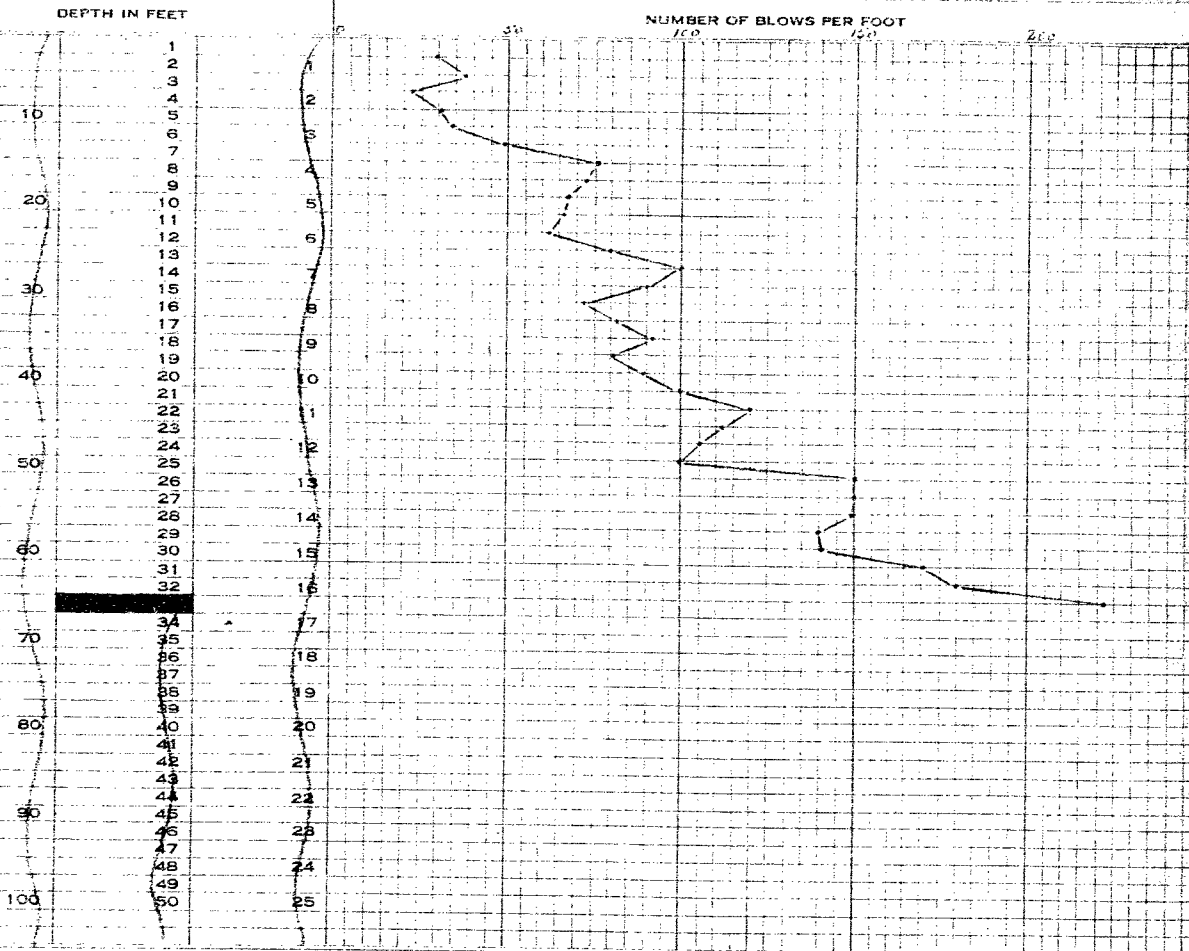
DATE: OCTOBER 14, 1954.

JOB NO. PC 320

TEST NO.: 5

WEIGHT OF HAMMER 2254

DROP: 3 FT.



Ground Surface Elevation 998
Refusal Elevation 966
Number of Blows 232

SIGNED

Wm. J. P. Sh.

FRANKI

COMPRESSED PILE COMPANY
OF CANADA LIMITED

PERCUSSION TEST DIAGRAM

FOR: DEPARTMENT OF HIGHWAYS OF ONTARIO

AT: OXFORD W. #1

DATE: OCTOBER 7, 1954.

JOB NO. PG 320

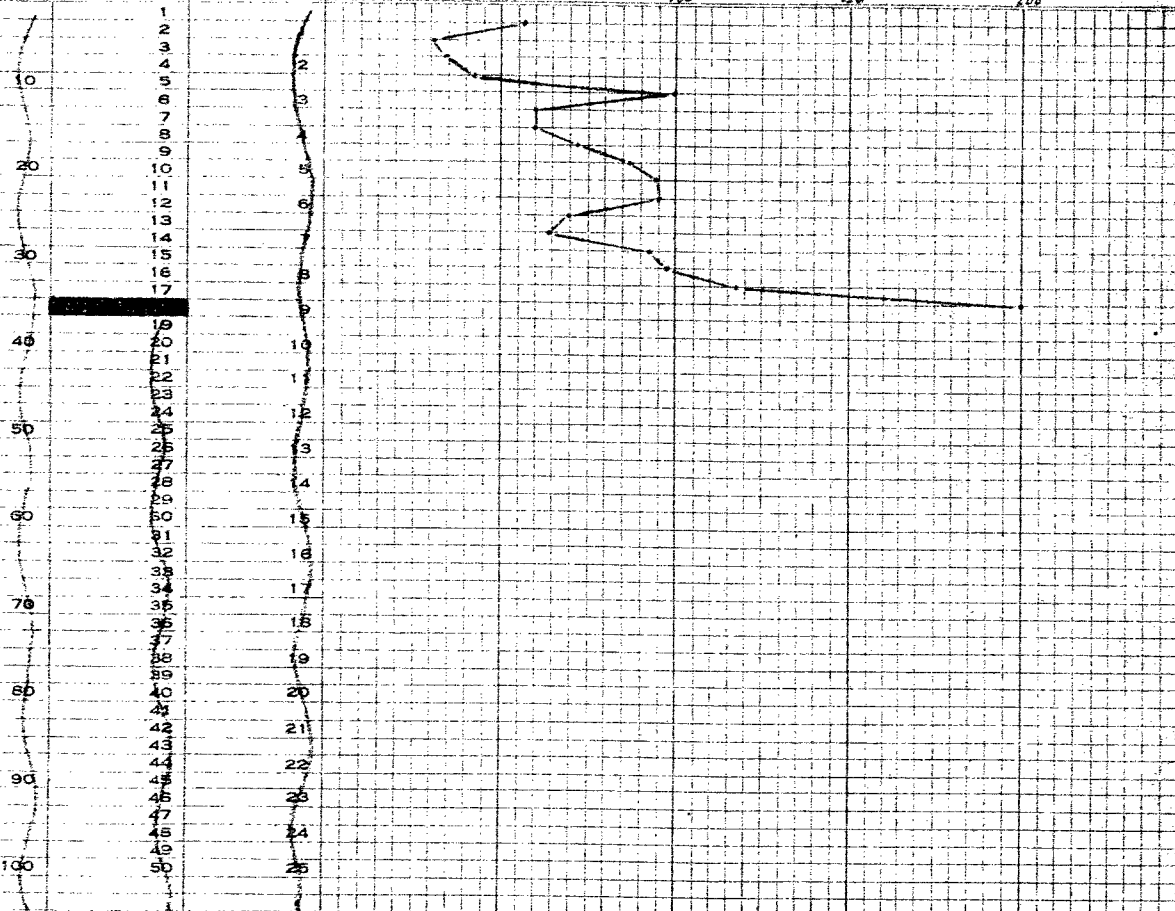
TEST NO.: 6

WEIGHT OF HAMMER 225#

DROP, 3 FT.

DEPTH IN FEET

NUMBER OF BLOWS PER FOOT

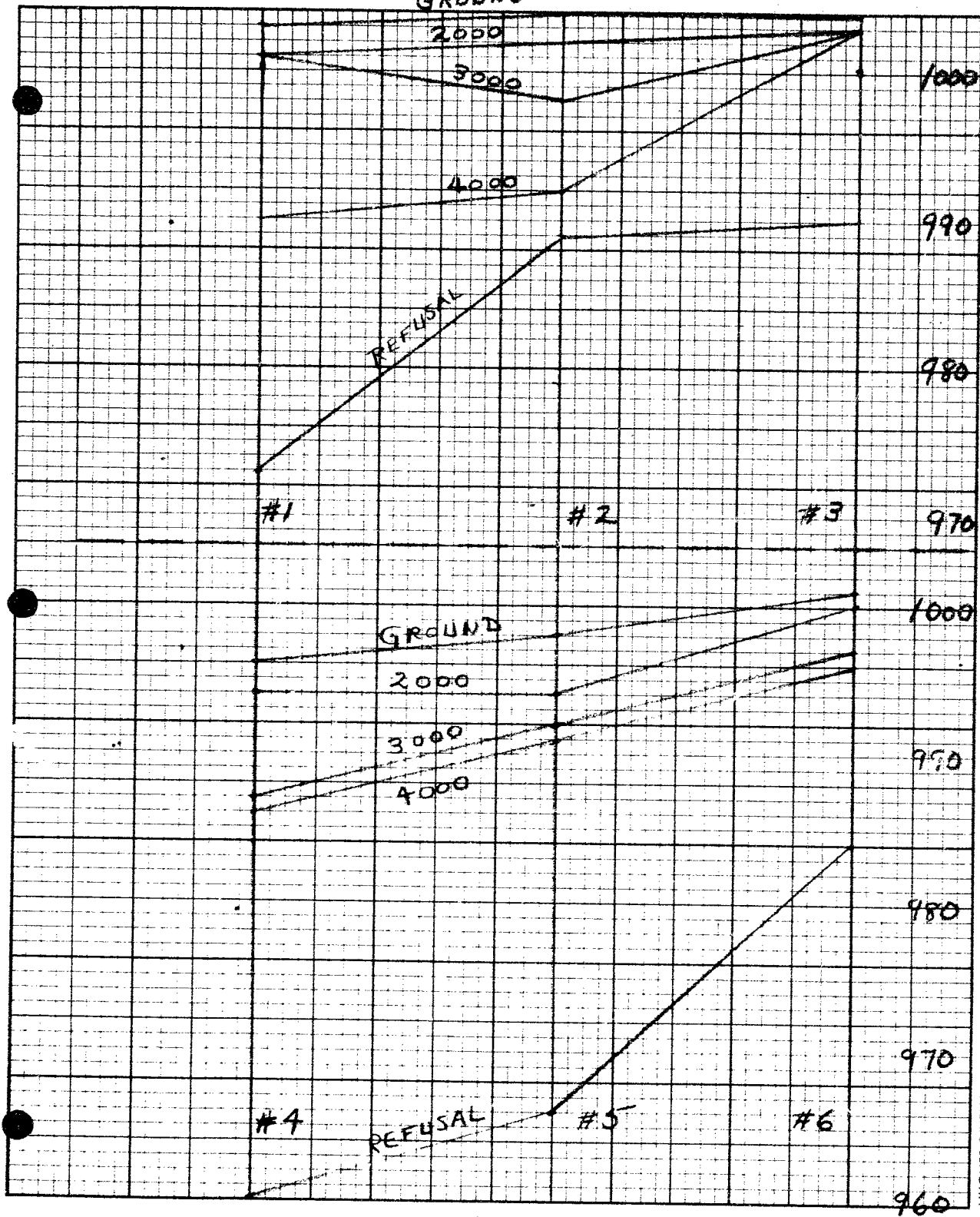


Ground Surface Elevation 1001
Refusal Elevation 984
Number of Blows 200

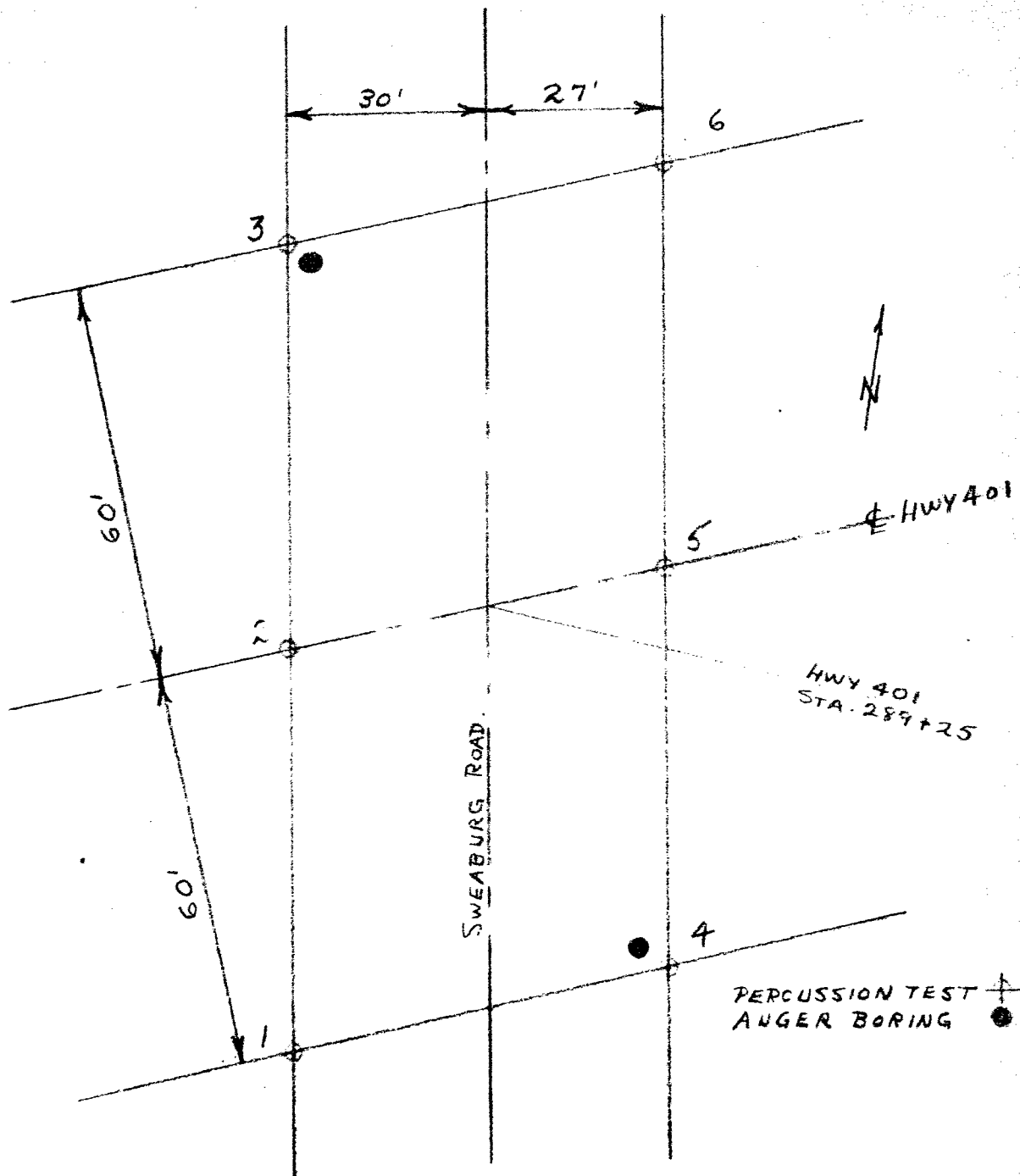
SIGNED

[Signature]

PERCUSSION RESULTS PROFILE



LOCATION SKETCH



FRANKI COMPRESSED FILF COMPANY OF CANADA LIMITED
for
DEPARTMENT OF HIGHWAYS OF ONTARIO
at
OXFORD W. #1

PG 320
October 27, 1957