

55-F-219C



Hwy 401 &

SANDWICH S.

BRIDGE # 11



"Franki Piles carry more tons per Pile"

CABLEGRAMS:  
"FRANKIPILE"



TELEPHONE:  
HUDSON 3-9003

# FRANKI COMPRESSED PILE COMPANY OF CANADA LIMITED

1835 YONGE STREET

TORONTO 7, ONT.

Our Reference:  
OP 2455 PC 361  
March 7th, 1955.

## SOIL INVESTIGATION REPORT for DEPARTMENT OF HIGHWAYS OF ONTARIO (N. M. Dillon, Consulting Engineers) at SANDWICH SOUTH BRIDGE #1, HWY 401

As requested we carried out a soil investigation at the proposed bridge site, Sandwich South #1, highway #401.

### REPORT OF INVESTIGATION:

Six percussion tests were made at the locations shown on the Location Sketch. The results are shown on the accompanying diagrams and are summarized as follows.

### SUMMARY

Hole No:	Ground Surface	Water Level	2,000 lbs per sq.ft.	4,000 lbs per sq.ft.	6,000 lbs per sq.ft.	Refusal
1	625.5	Dry	621	620	619	616
2	625.5	Dry	621	620	619	616
3	625.5	Dry	620	619	618	616
4	625.5	Dry	621	620	619	615
5	625.5	Dry	622	620	619	616
6	625.5	Dry	621	620	619	617

Two auger borings were made at holes #3 and #4, with the following results.

Hole #3.

Ground Surface Elevation 625.5

- |         |  |
|---------|--|
| 0' - 1' | Soft sandy clay topsoil.                                   |
| 1' - 2' | Soft mottled sandy clay, slightly stoney.                  |
| 2' - 4' | Mottled sandy clay, slightly stoney.                       |
| 4' - 5' | Mottled sandy clay, slightly stoney.                       |
| 5' - 8' | Very stiff brown sandy clay, with angular stone fragments. |
| 8' - 9' | Very stiff brown sandy clay, with angular stone fragments. |

Hole #4.

Ground Surface Elevation 625.5

- |          |  |
|----------|--|
| 0' - 1'  | Soft sandy clay topsoil.                   |
| 1' - 2'  | Mottled sandy clay, slightly stoney.       |
| 2' - 4'  | Mottled sandy clay, slightly stoney.       |
| 4' - 6'  | Mottled sandy clay, slightly stoney.       |
| 6' - 8'  | Stiff mottled sandy clay, slightly stoney. |
| 8' - 10' | Stiff brown sandy clay, slightly stoney.   |

"Mottled", as used above, means a conglomeration of particles of gray sandy clay and reddish brown clayey sand.

CONCLUSION:

Footings could be based on material of the bearing capacity shown, and at the elevations shown in the percussion test summary.

*W.H.T. Wilson*  
W.H.T. Wilson, P. Eng.

# FRANKI

COMPRESSED PILE COMPANY  
OF CANADA LIMITED

## PERCUSSION TEST DIAGRAM

FOR: DEPARTMENT OF HIGHWAYS OF ONTARIO.

AT: SHADICE SOUTH BRIDGE #11, HWY 401

JOB NO. RC 361

DATE: FEBRUARY 26th, 1955.

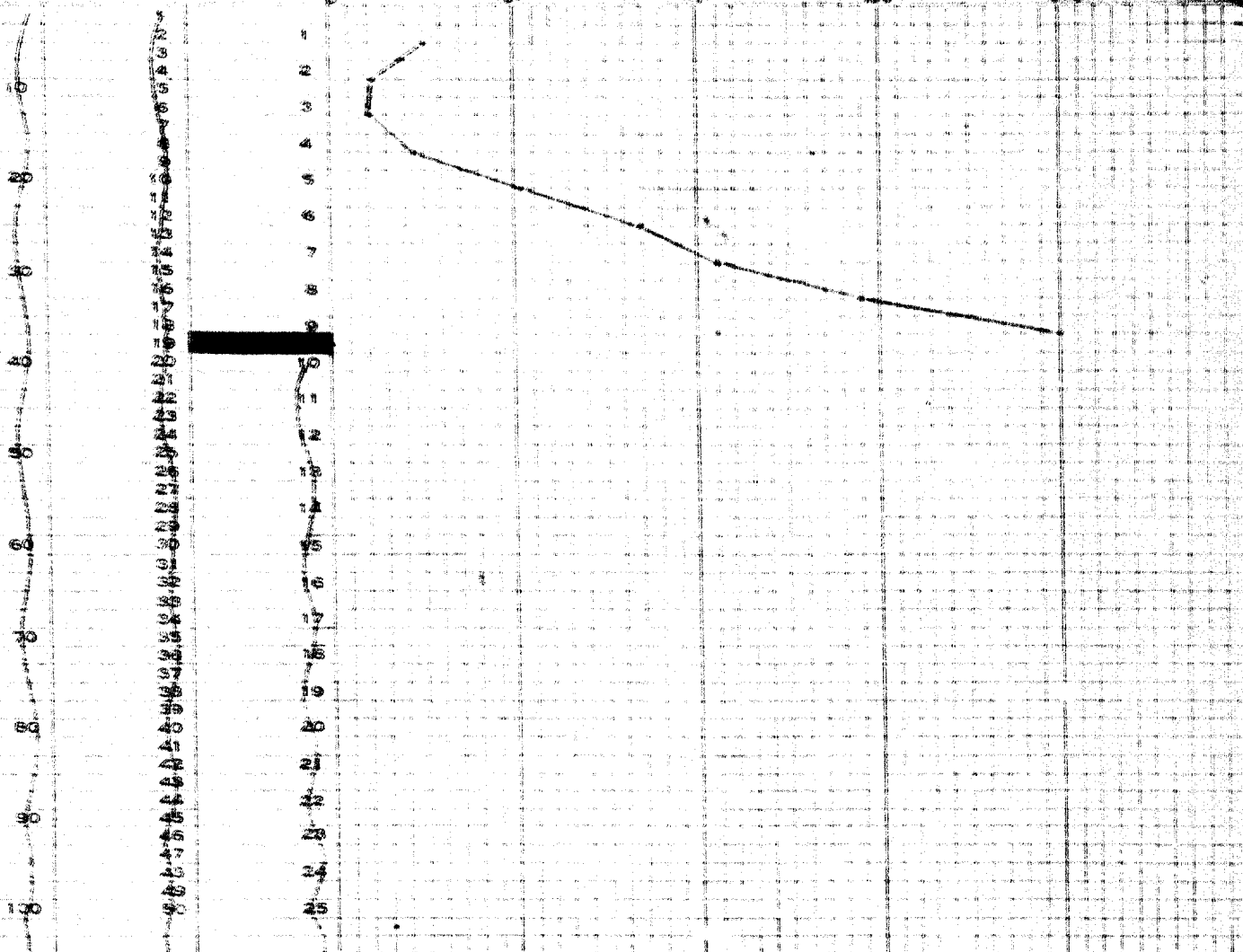
TEST NO.: 1

WEIGHT OF HAMMER 2250

DROP 3 FT

DEPTH IN FEET

NUMBER OF BLOWS PER FOOT



Ground Surface Elevation 625.5  
Refusal Elevation 616  
Number of Blows 100

SIGNED

*W. J. G. G. G.*

FRANKI

COMPRESSED PILE COMPANY  
OF CANADA LIMITED

PERCUSSION TEST DIAGRAM

FOR: DEPARTMENT OF HIGHWAYS OF ONTARIO.

AT: SANDWICH SOUTH BRIDGE #11, HWY 401

DATE: FEBRUARY 26th, 1955.

TEST NO.: 2

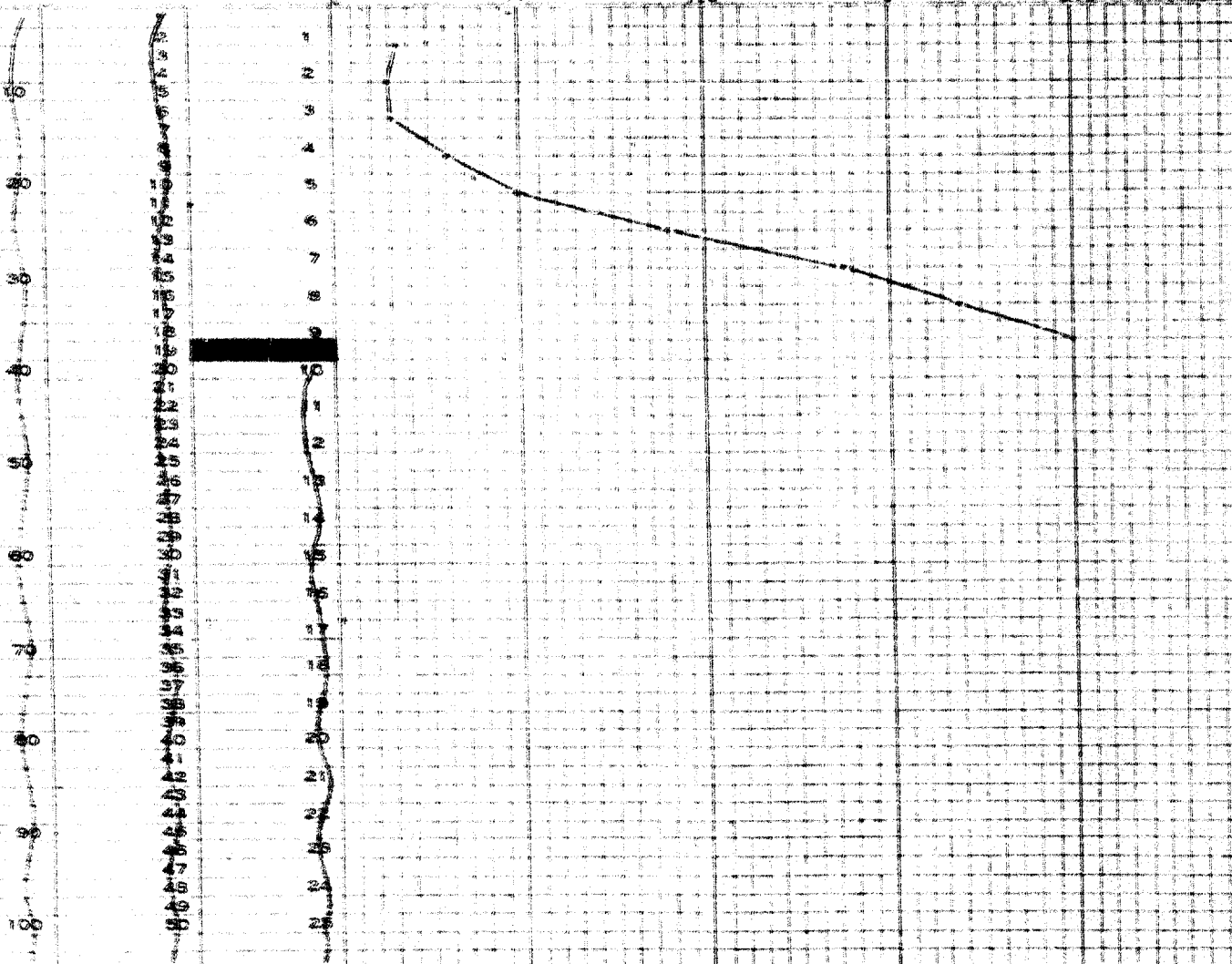
JOB NO. FC 361

WEIGHT OF HAMMER 225 lb

DROP 3 FT.

DEPTH IN FEET

NUMBER OF BLOWS PER FOOT



Ground Surface Elevation 625.5  
Refusal Elevation 616  
Number of Blows 200 for 10'

SIGNED *Edmund J. O'Leary Jr.*

# FRANKI

COMPRESSED PILE COMPANY  
OF CANADA LIMITED

## PERCUSSION TEST DIAGRAM

FOR: DEPARTMENT OF HIGHWAYS OF ONTARIO

AT: SANDWICH SOUTH BRIDGE #11, HWY 401

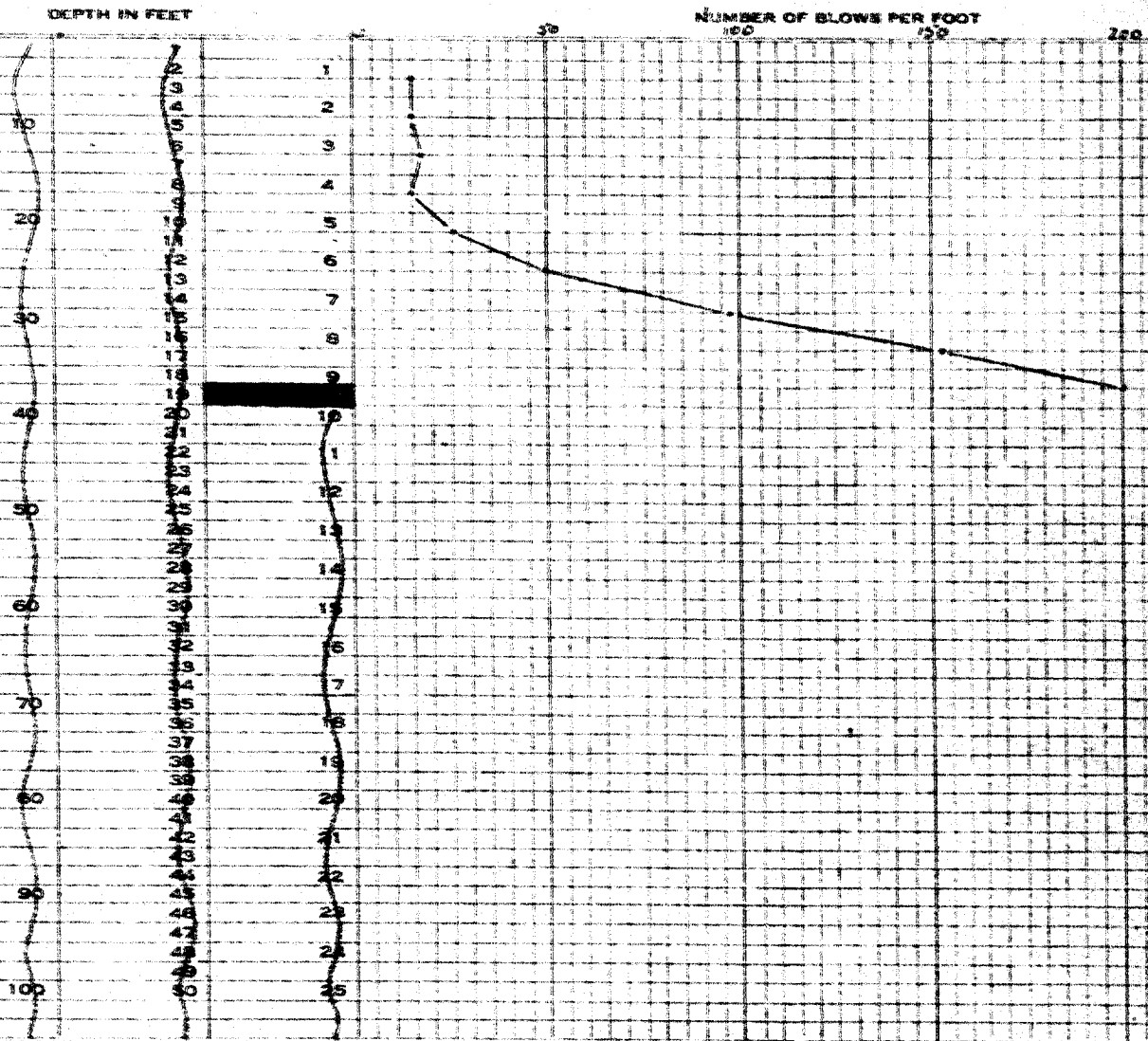
DATE: FEBRUARY 25th, 1955.

TEST NO.: 3

JOB NO. 361

WEIGHT OF HAMMER 2256

DROP 3 FT.



Ground Surface Elevation 625.5  
Refusal Elevation 616  
Number of Blows 200 for 11

SIGNED

*Ronald D. Blagden*

# FRANKI

COMPRESSED PILE COMPANY  
OF CANADA LIMITED

## PERCUSSION TEST DIAGRAM

FOR: DEPARTMENT OF HIGHWAYS OF ONTARIO.

AT: SANDWICH SOUTH BRIDGE #11, H.W. 401

JOB NO. PC 361

DATE: FEBRUARY 28th, 1955.

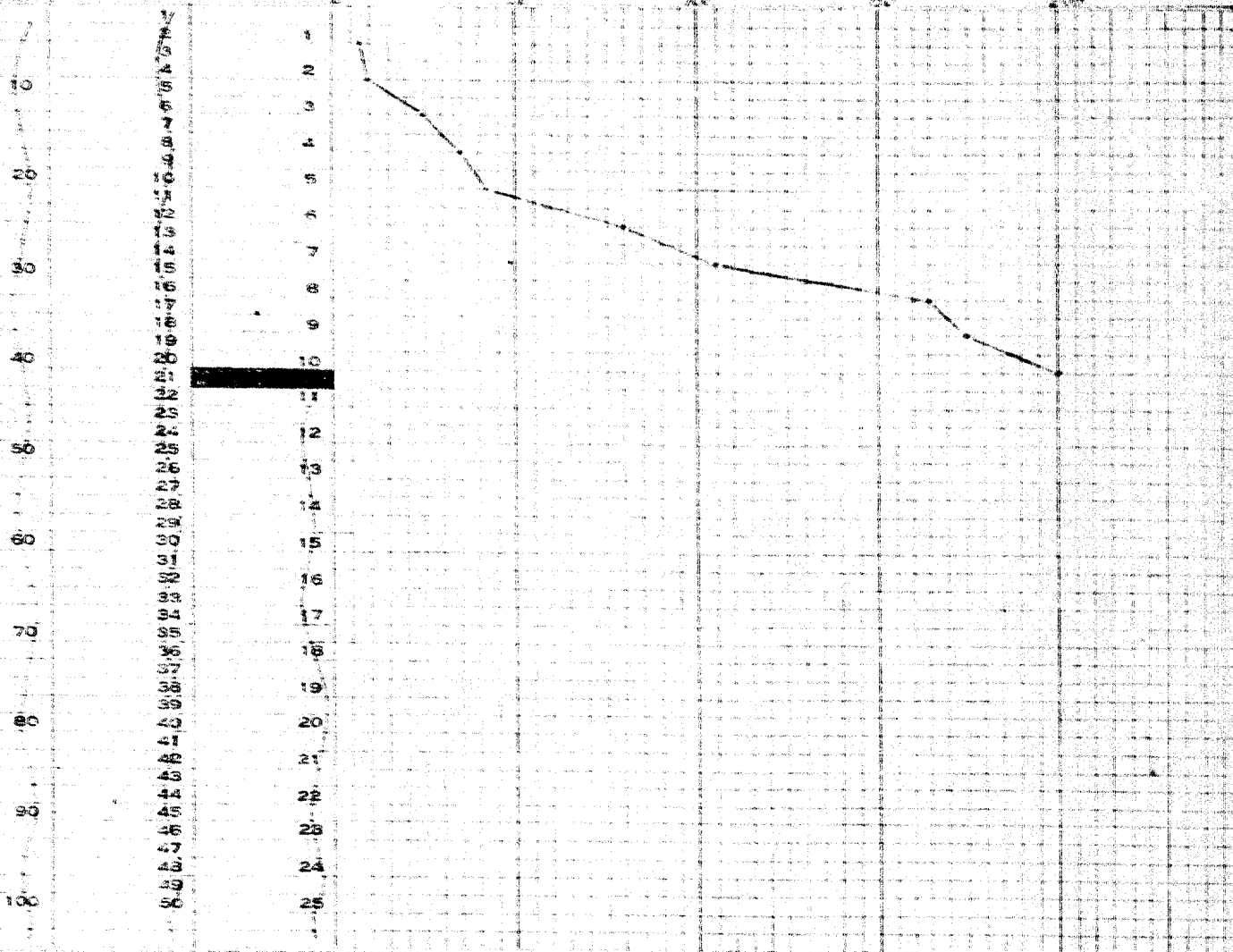
TEST NO.: 1

WEIGHT OF HAMMER 2254

DROP 3 FT.

DEPTH IN FEET

NUMBER OF BLOWS PER FOOT



Ground Surface Elevation 625.5  
Refusal Elevation 615  
Number of Blows 200 for 11"

SIGNED

*Ronald J. Dill*

# FRANKI

COMPRESSED PILE COMPANY  
OF CANADA LIMITED

## PERCUSSION TEST DIAGRAM

FOR: DEPARTMENT OF HIGHWAYS OF ONTARIO.

AT: SANDWICH SOUTH BRIDGE #11, HWY 401

JOB NO. PC 361

DATE: MARCH 1st, 1955.

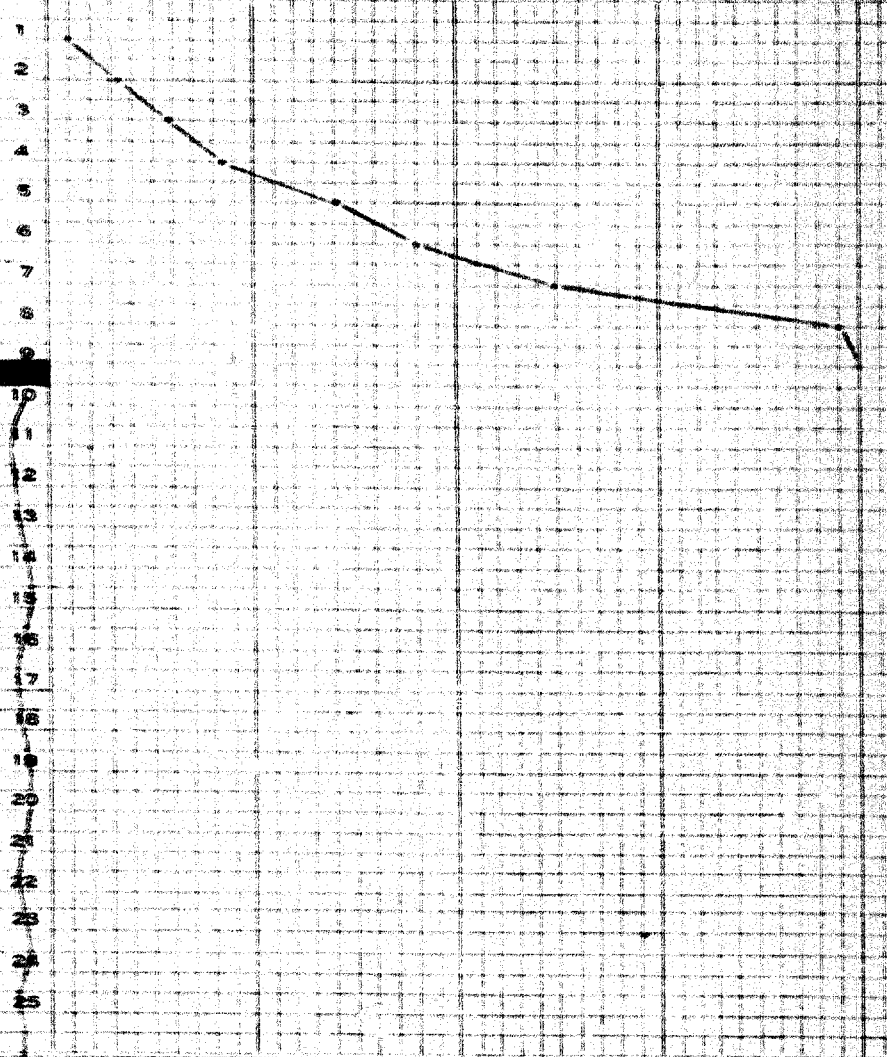
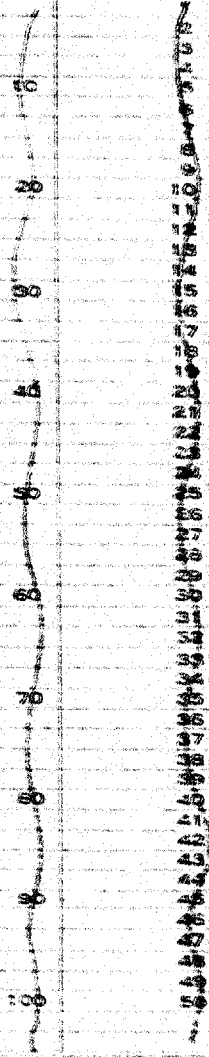
TEST NO.: 5

WEIGHT OF HAMMER 2254

DROP 3 FT.

DEPTH IN FEET

NUMBER OF BLOWS PER FOOT



Ground Surface Elevation 625.5  
Refusal Elevation 616  
Number of Blows 200 for 9'

SIGNED

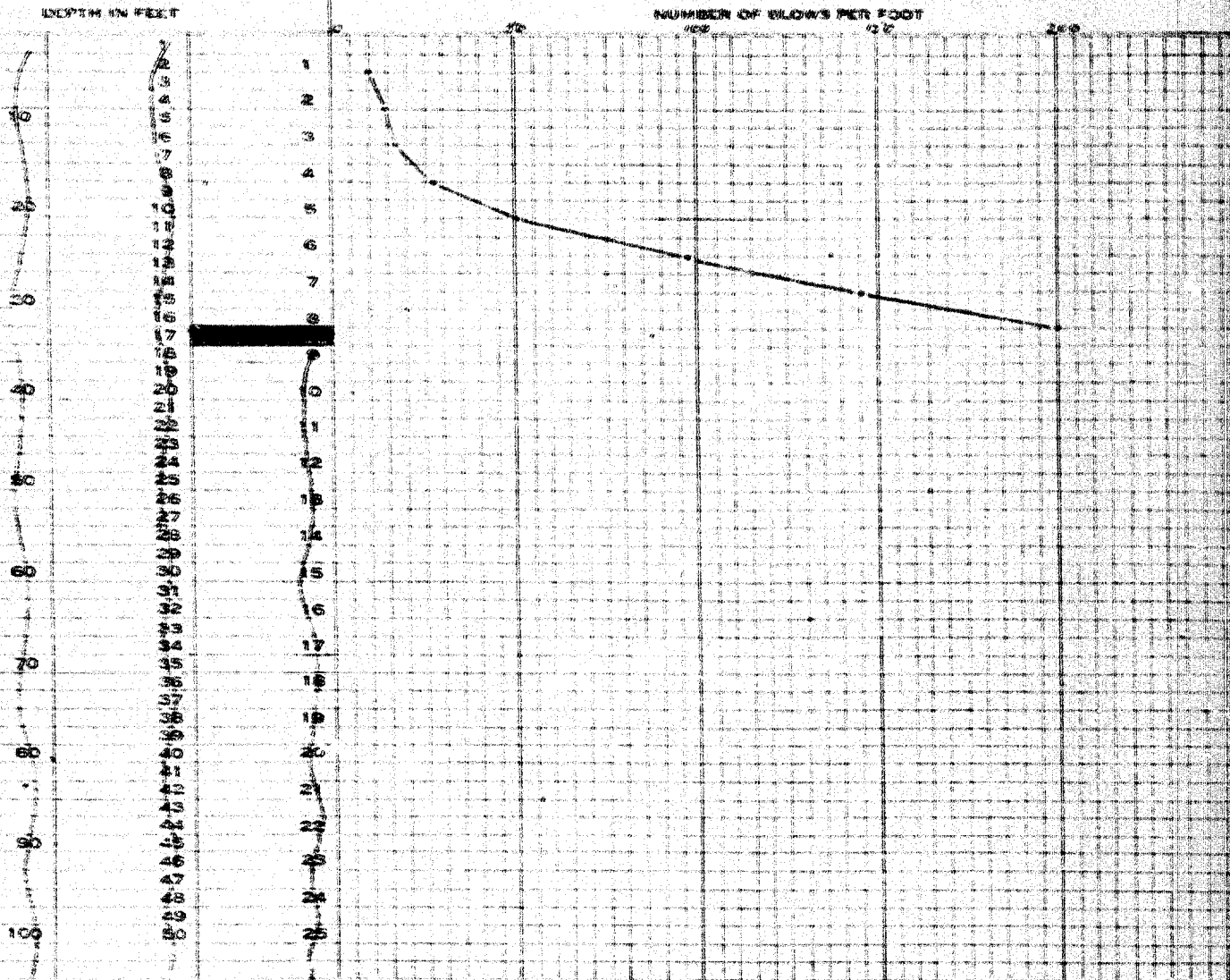
*Donald J. Plush*



**FRANKI**COMPRESSED PILE COMPANY  
OF CANADA LIMITED**PERCUSSION TEST DIAGRAM**FOR: DEPARTMENT OF HIGHWAYS OF ONTARIO.AT: SANDWICH SOUTH BRIDGE #11, HWY 401JOB NO. C 361DATE: MARCH 1st, 1955.TEST NO.: 6

WEIGHT OF HAMMER 2250

DROP 3 FT

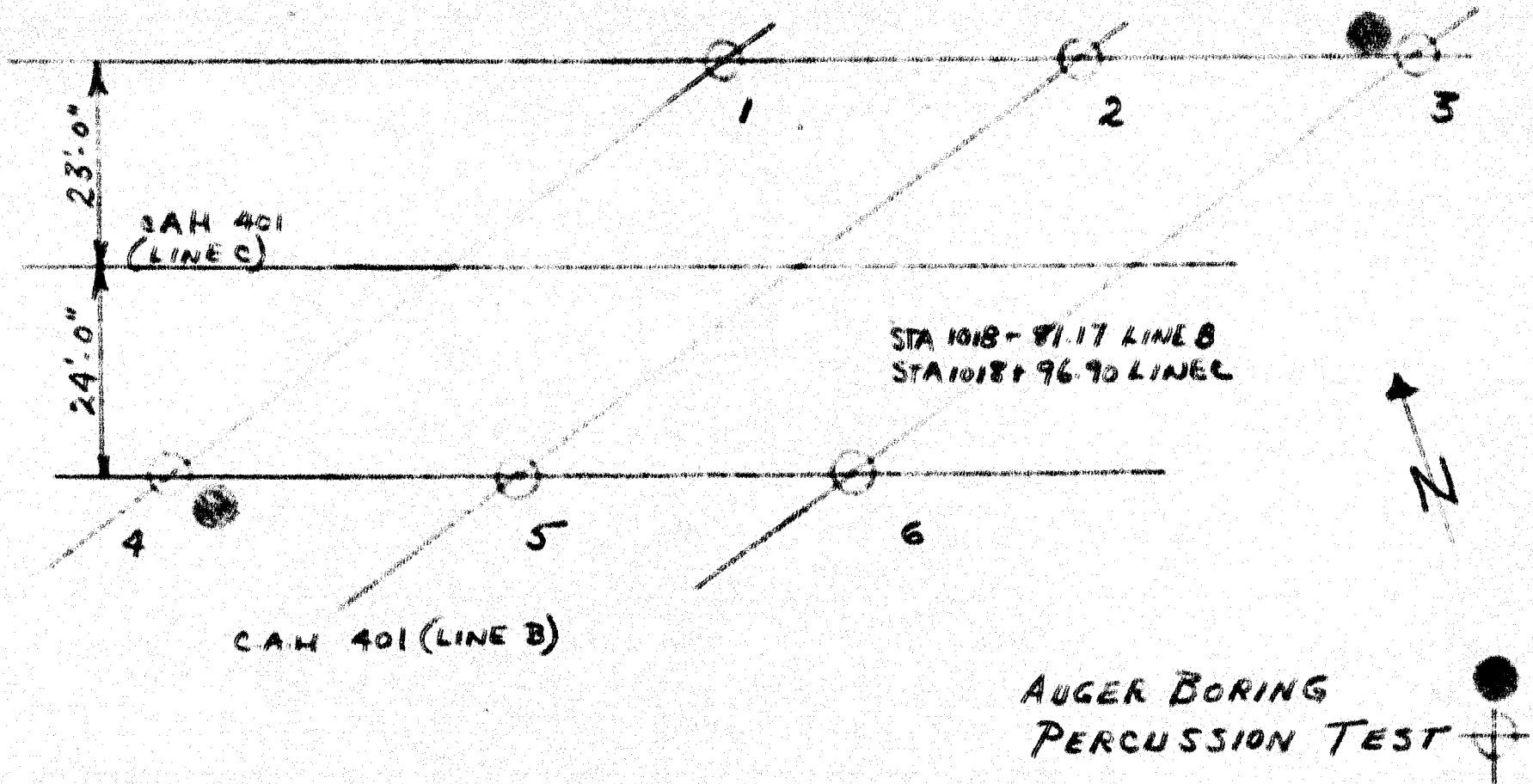


Ground Surface Elevation 625.5  
Refusal Elevation 617  
Number of Blows 200

SIGNED

*Donald J. G. L. Jr.*

LOCATION SKETCH



LOCATION SOIL TESTS

SANDWICH SOUTH BRIDGE #11.

FRANKI COMPRESSED PILE COMPANY OF CANADA LIMITED  
for  
DEPARTMENT OF HIGHWAYS OF ONTARIO.  
at  
SANDWICH SOUTH BRIDGE #11, HWY 401

PC 261  
March 7th, 1955.