

#

55-F-213C

#

Hwy 401 &

SANDWICH S.

#

13



"Franki Piles carry more tons per Pile"

# FRANKI COMPRESSED PILE COMPANY OF CANADA LIMITED

1835 YONGE STREET

TORONTO 7, ONT.

CABLEGRAMS:  
"FRANKIPILE"



TELEPHONE:  
HUDSON 8-3009

Our Reference:  
OF 2655 PC 363  
March 18th, 1955.

55 F 213.

SOIL INVESTIGATION REPORT  
for  
DEPARTMENT OF HIGHWAYS OF ONTARIO  
(M.M. Dillon, Consulting Engineers)  
at  
SANDWICH SOUTH BRIDGE #13.

As requested we carried out a soil investigation  
at the proposed bridge site, Sandwich South #13, highway #401.

REPORT OF INVESTIGATION:

Six percussion tests were made at the locations  
shown on the Location Sketch. The results are shown on the  
accompanying diagrams and are summarized as follows:

S U M M A R Y

Hole No:	Ground Surface	2,000 lbs per sq.ft.	4,000 lbs per sq.ft.	6,000 lbs per sq.ft.	Refusal
1	616	611	610	610	608
2	616	610	608	608	606
3	616	610	609	608	607
4	616	611	610	609	606
5	616	611	610	610	608
6	616	612	610	610	607

Two auger borings were made at holes #1 and  
#2, with the following results.

March 18th, 1955.

- 2 -

LOG OF AUGER BORINGS

Hole #1.

Ground surface Elevation: 616

0	-	1'	Sandy clay topsoil.
1'	-	2'	Mottled sandy clay, slightly stoney.
3'	-	4'	Mottled sandy clay, slightly stoney.
5'	-	6'	Mottled sandy clay, slightly stoney.
7'	-	8'	Stiff mottled sandy clay, slightly stoney.
8'	-	9'	Hard mottled sandy clay, slightly stoney.

Hole #2

Ground Surface Elevation: 616

0	-	1'	Sandy clay topsoil.
1'	-	2'	Mottled sandy clay, slightly stoney.
5'	-	6'	Mottled sandy clay, slightly stoney.
7'	-	8'	Mottled sandy clay, slightly stoney.
8'	-	9'	Stiff mottled sandy clay, slightly stoney.
9'	-	10'	Hard mottled sandy clay, slightly stoney.

The term "mottled", as used above, refers to a conglomeration of particles of grey sandy clay, and reddish brown clayey sand.

CONCLUSION:

Footings could be based on material of the bearing capacity shown, and at the elevations shown in the percussion test summary.

  
W.E. Lardner, P. Eng.

FRANK!

COMPRESSED PILE COMPANY  
OF CANADA LIMITED

PERCUSSION TEST DIAGRAM

FOR: DEPARTMENT OF HIGHWAYS OF ONTARIO

AT: SANDWICH SOUTH #12.

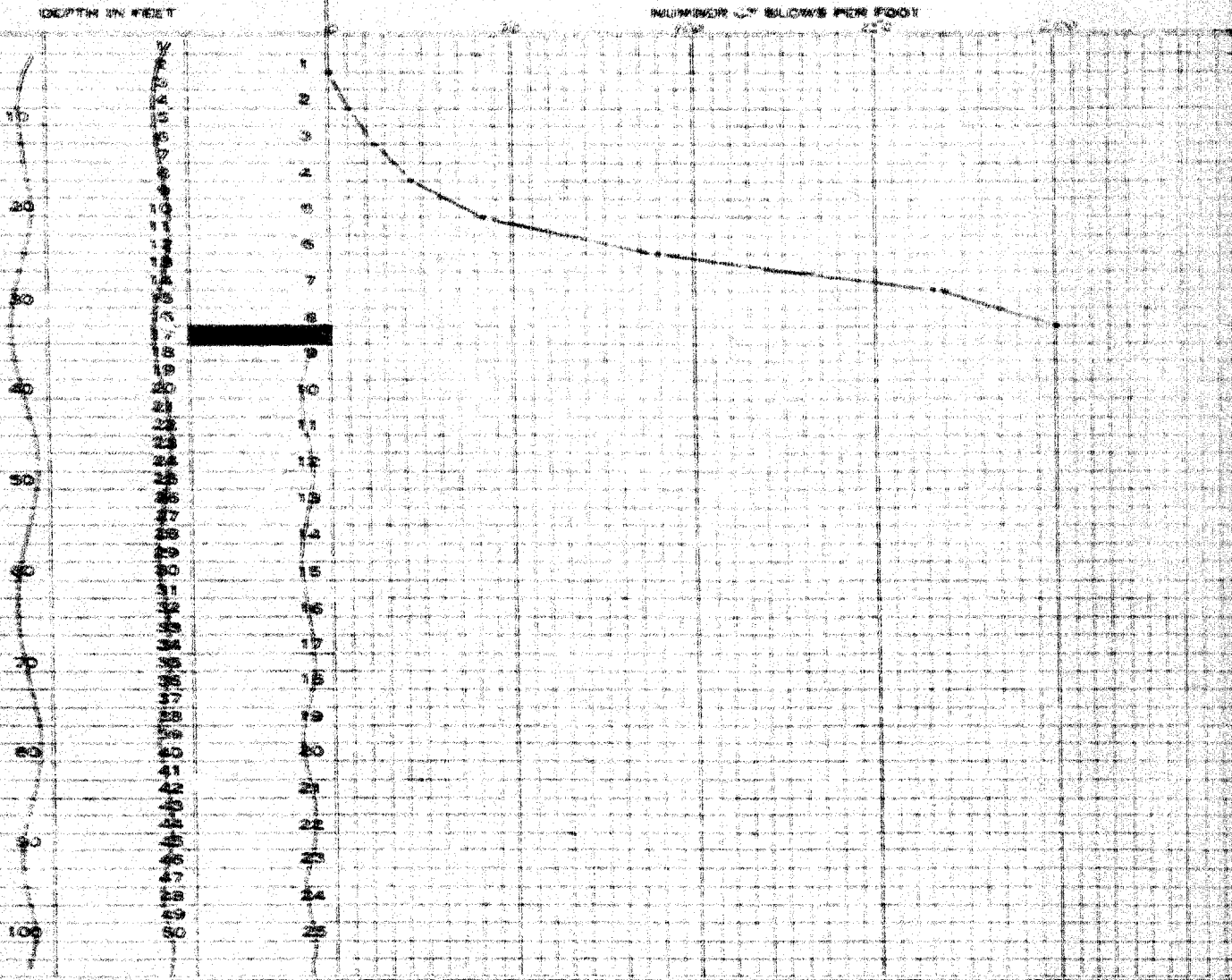
JOB NO. PC 142

DATE: MARCH 10th, 1945.

TEST NO. 1

WEIGHT OF HAMMER 2250

DROP 30 ft



Ground Surface Elevation 616  
Refusal Elevation 608  
Number of Blows 200 for 11"

SIGNED

*Donald J. [Signature]*

# FRANKI

COMPRESSED PILE COMPANY  
OF CANADA LIMITED

## PERCUSSION TEST DIAGRAM

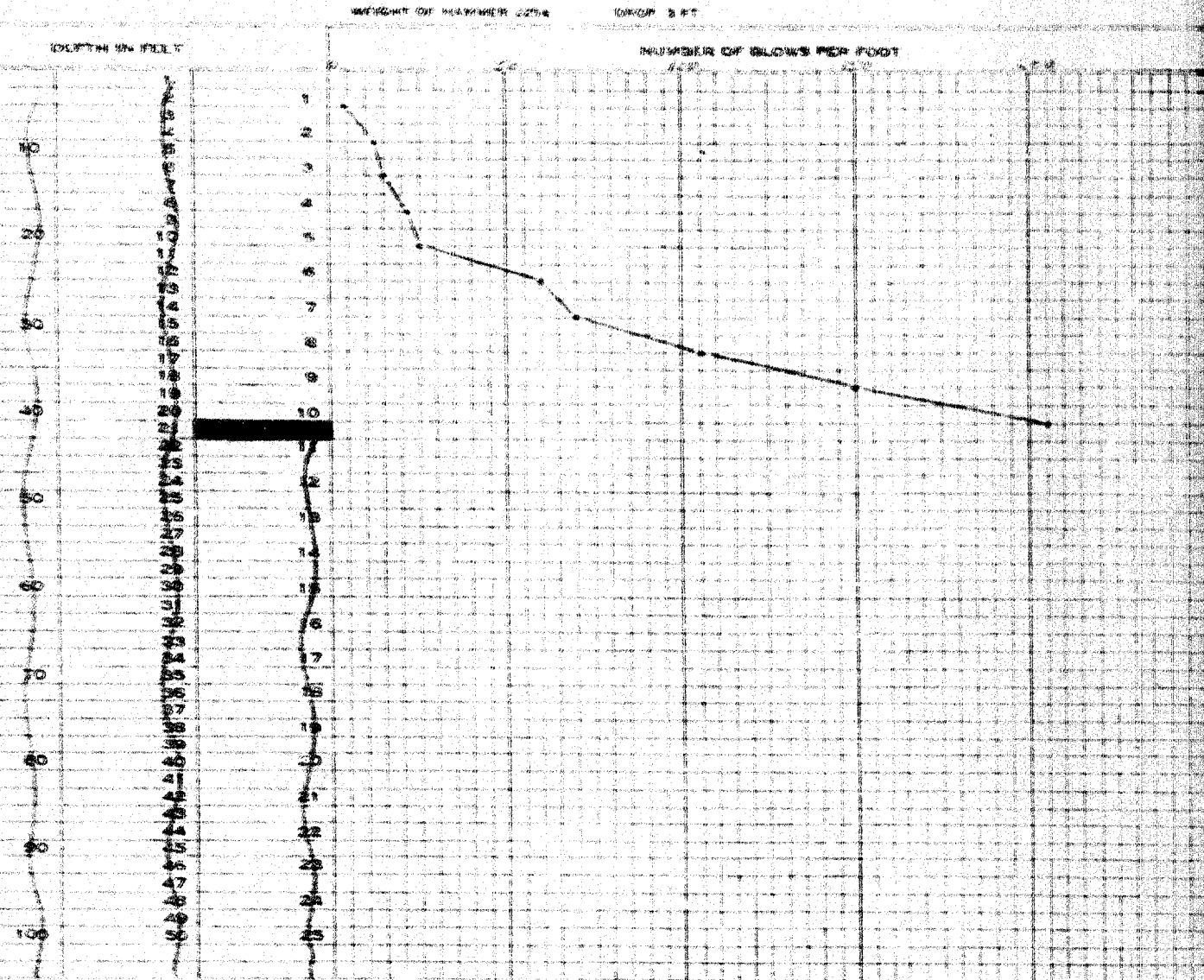
FOR: DEPARTMENT OF HIGHWAYS OF ONTARIO

AT: SANDWICH STATION #22

JOB NO. PG 261

DATE: MARCH 22, 1958

TEST NO.: 2



Ground Surface Elevation 616  
Refusal Elevation 606  
Number of Blows 200

SIGNED

*Donald J. LaRue*

# FRANKI

COMPRESSED PILE COMPANY  
OF CANADA LIMITED

## PERCUSSION TEST DIAGRAM

FOR: DEPARTMENT OF HIGHWAYS OF ONTARIO.

AT: SANDWICH SOUTH #13.

DATE: MARCH 9th, 1955.

TEST NO.: 1

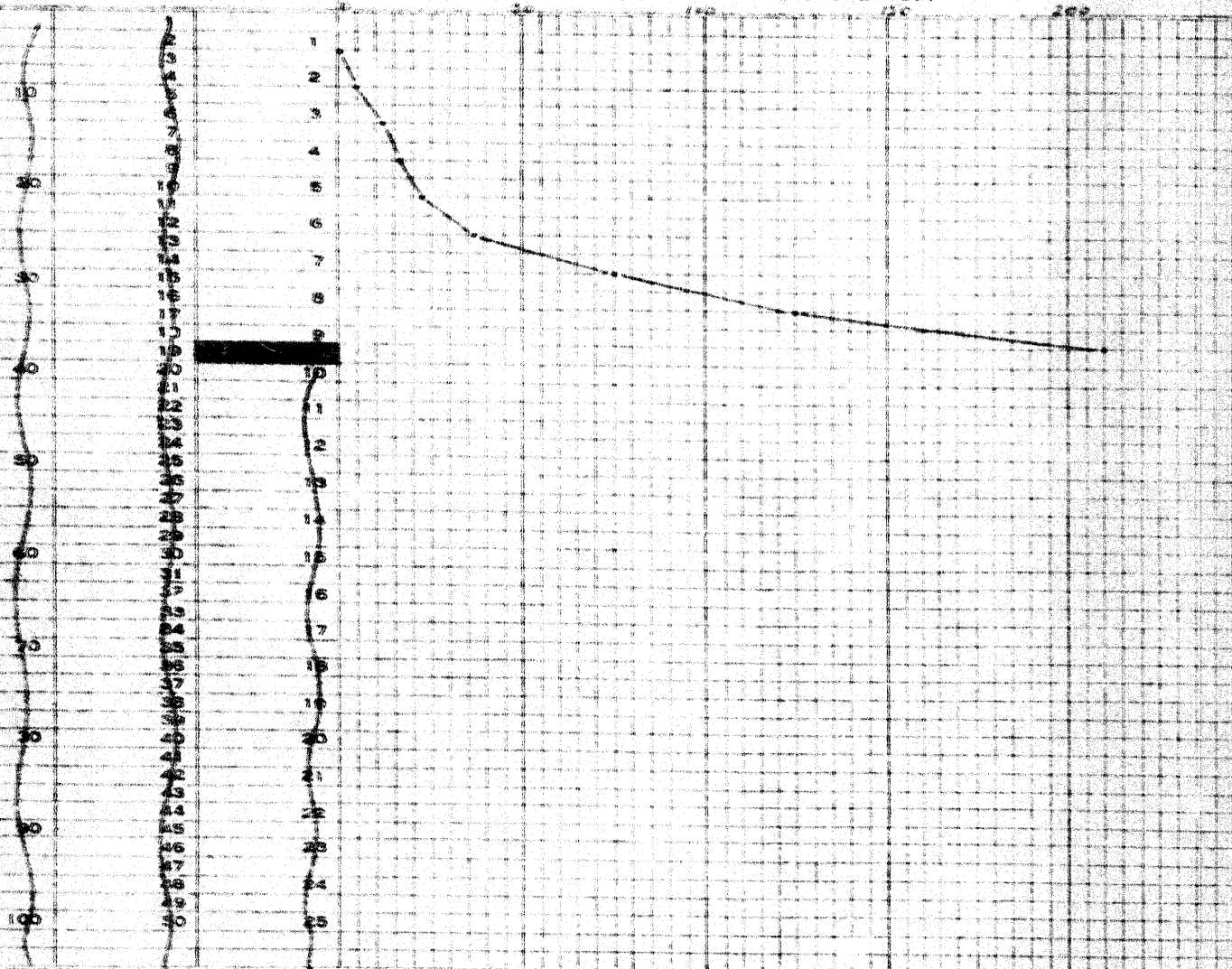
JOB NO. FC 363

WEIGHT OF HAMMER 2250

DROP 3 FT.

DEPTH IN FEET

NUMBER OF BLOWS PER FOOT



Ground Surface Elevation 616  
Refusal Elevation 607  
Number of Blows 200

SIGNED

*W. J. G. Gough*



# FRANKI

COMPRESSED PILE COMPANY  
OF CANADA LIMITED

## PERCUSSION TEST DIAGRAM

FOR: DEPARTMENT OF HIGHWAYS OF ONTARIO.

AT: SANDWICH SOUTH #13.

JOB NO. PC 362

DATE: MARCH 11th, 1955.

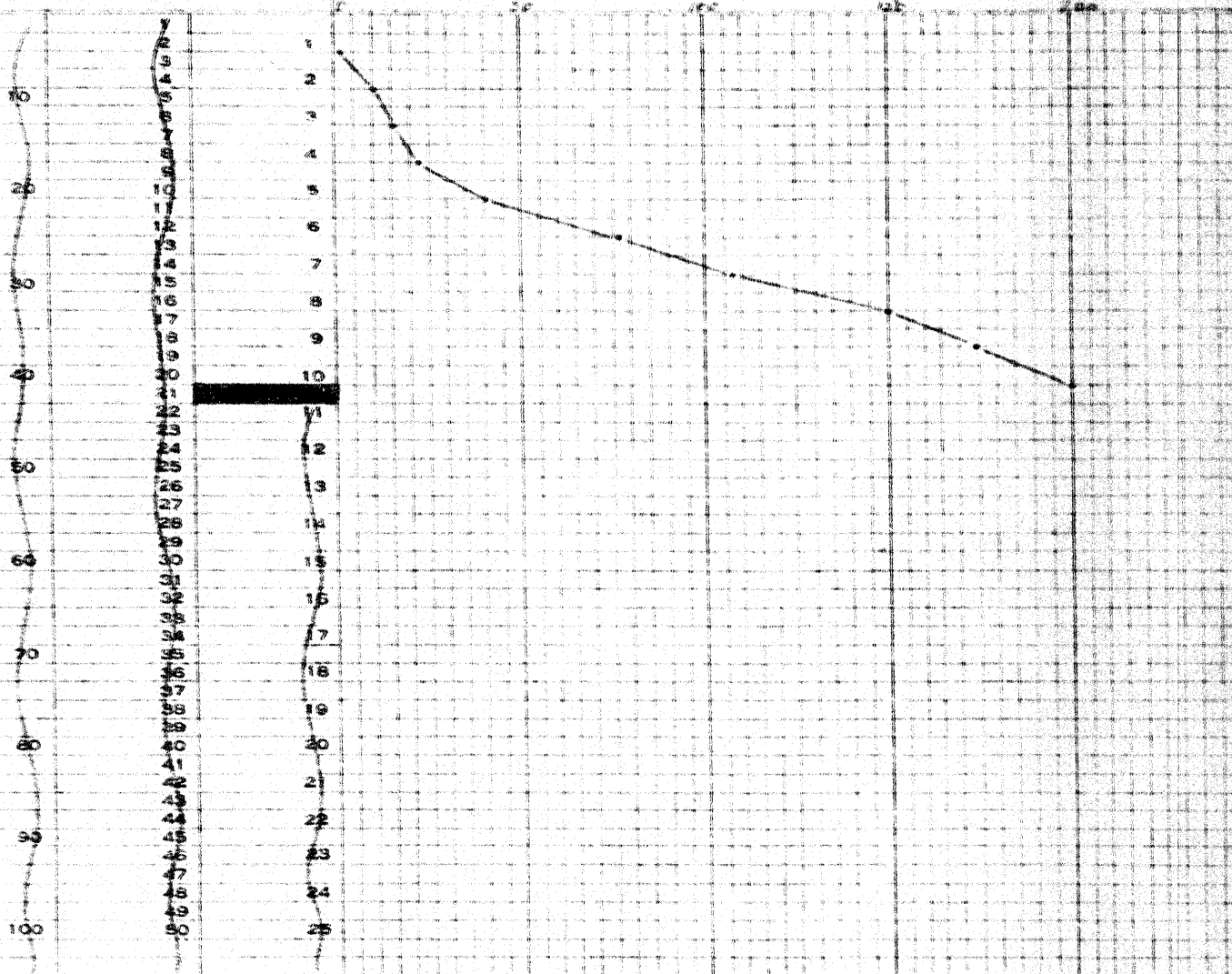
TEST NO.: 4

WEIGHT OF HAMMER 2250

DROP 3 FT

DEPTH IN FEET

NUMBER OF BLOWS PER FOOT



Ground Surface Elevation 616  
Refusal Elevation 606  
Number of Blows 200

SIGNED

*Donald J. Feltz*

# FRANKI

COMPRESSED PILE COMPANY  
OF CANADA LIMITED

## PERCUSSION TEST DIAGRAM

FOR: DEPARTMENT OF HIGHWAYS OF ONTARIO,

AT: SANDWICH BRIDGE #13.

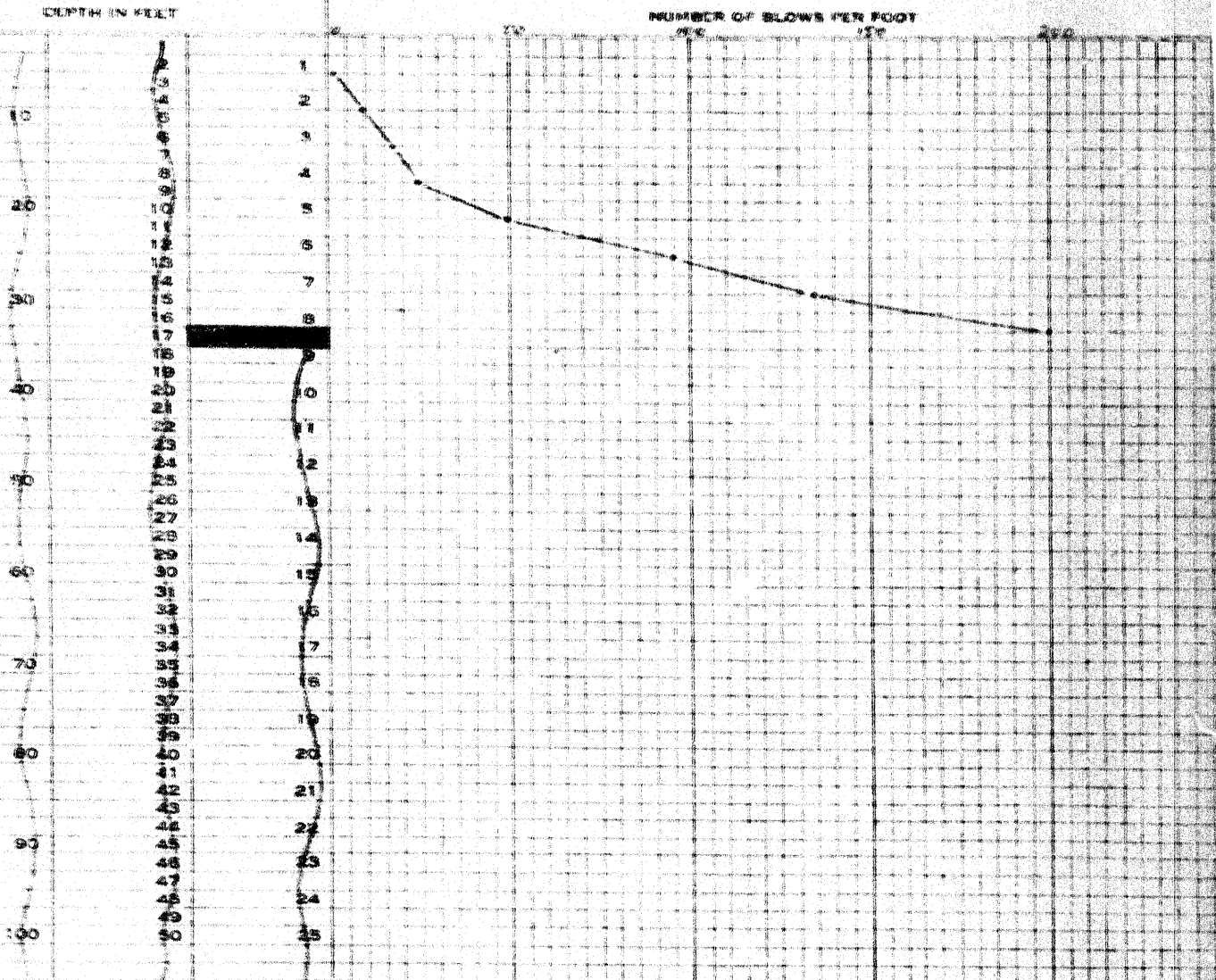
DATE: MARCH 11th, 1955.

TEST NO.: 5

JOB NO. PC 363

WEIGHT OF HAMMER 2000

DROP 3 FT.



Ground Surface Elevation 616  
Refusal Elevation 608  
Number of Blows 200 for 10"

SIGNED

*Donald J. Clark*



**FRANKI**  
COMPRESSED PILE COMPANY  
OF CANADA LIMITED

**PERCUSSION TEST DIAGRAM**

FOR: DEPARTMENT OF HIGHWAYS OF ONTARIO.

AT: SANDWICH SOUTH #13.

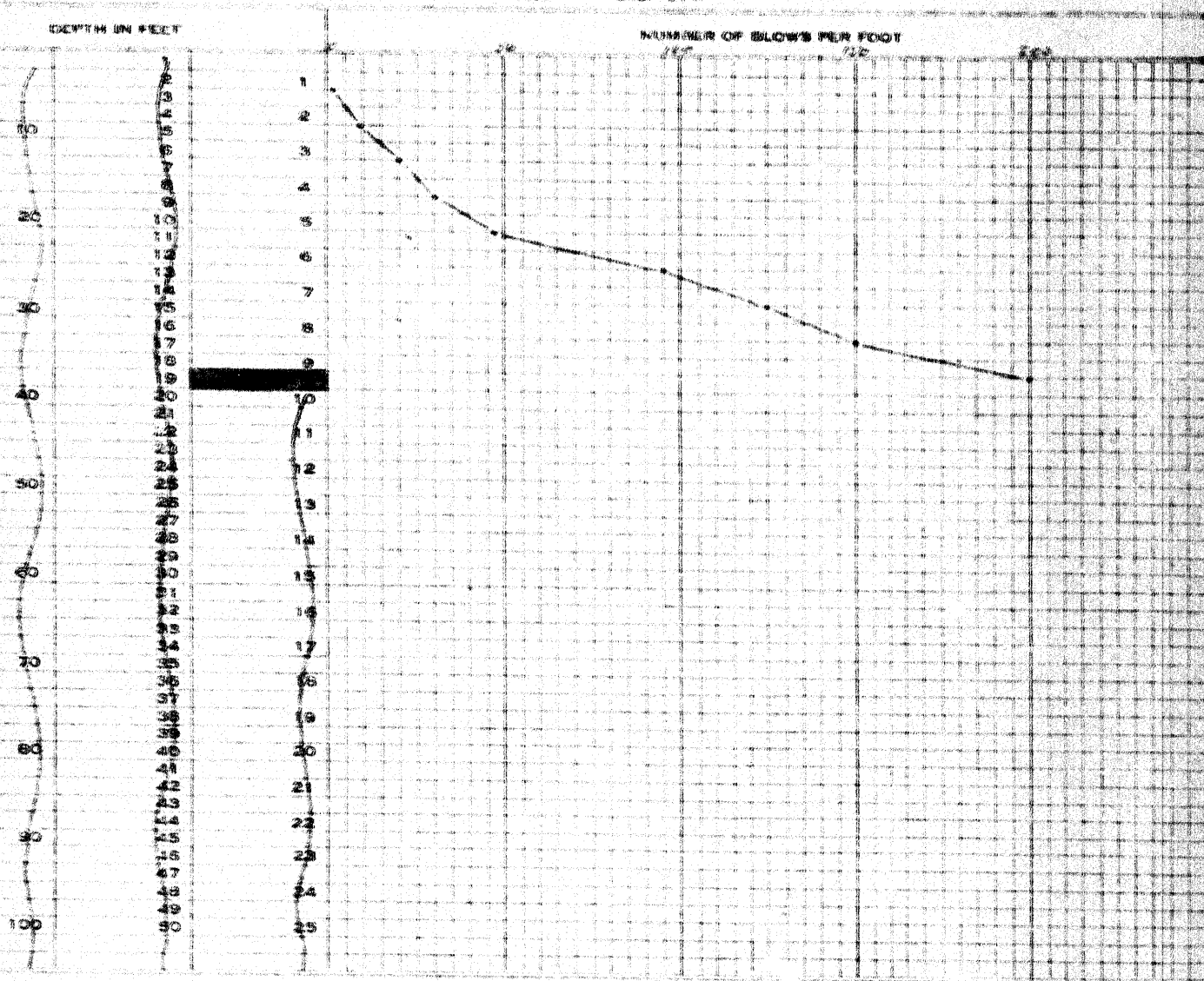
JOB NO. PO 363

DATE: MARCH 11th, 1955.

TEST NO.: 6

WEIGHT OF HAMMER 2254

DROP 2 FT

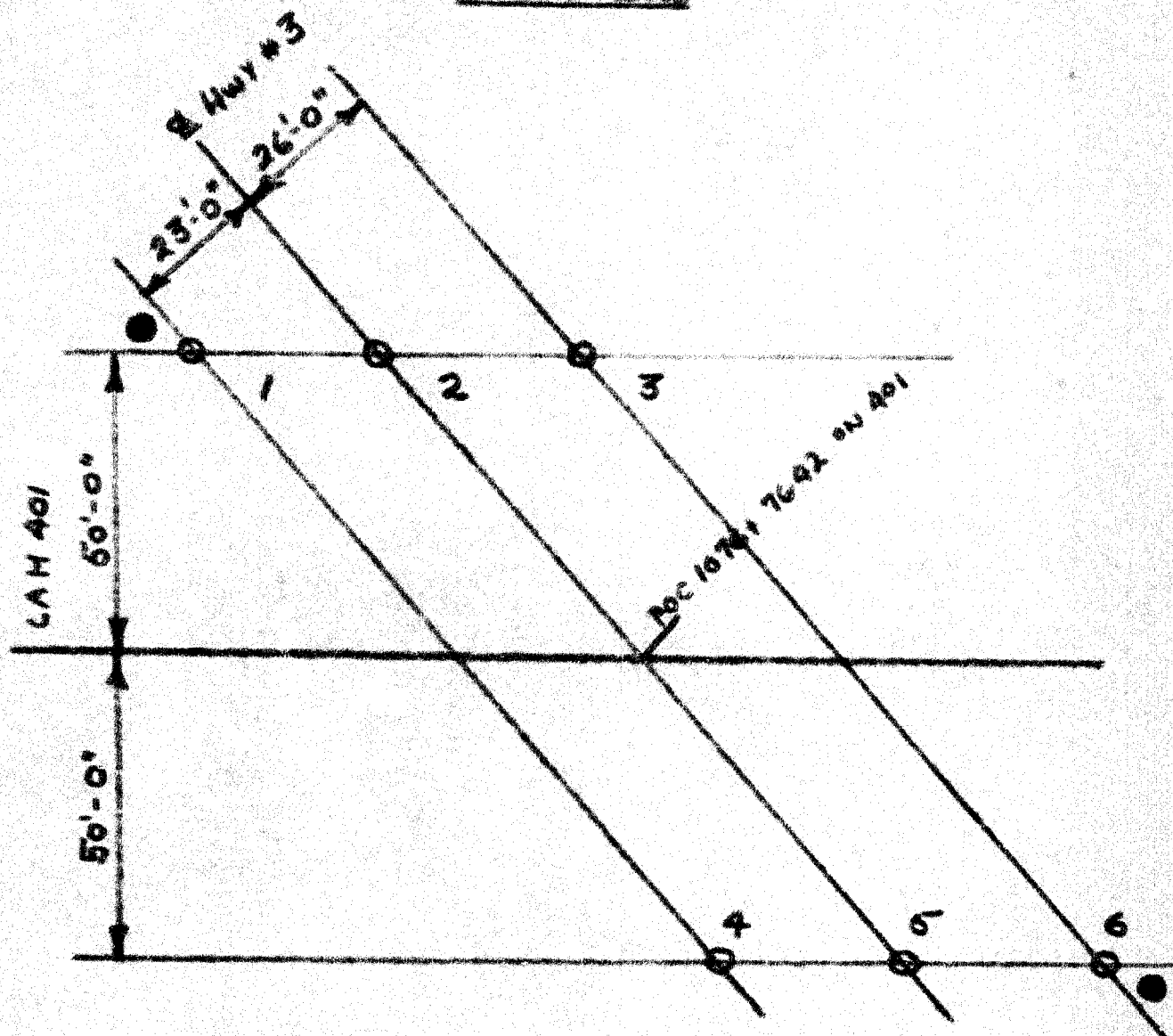


Ground Surface Elevation 616  
Refusal Elevation 607  
Number of Blows 200 per

SIGNED

*Ronald J. Gough*

LOCATION SKETCH



**PERCUSSION TEST  
AUGER BORING**

FRANKI COMpressed PILE COMPANY OF CANADA LIMITED  
for  
DEPARTMENT OF HIGHWAYS OF ONTARIO  
at  
SANDWICH SOUTH #13.

PC 363  
March 18th, 1954