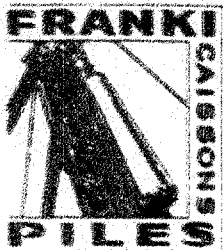


54-F-221C

SANDWICH SOUTH #8



"Franki Piles carry more tons per Pile"

52 F-221C

CABLEGRAMS
"FRANKIPILE"

FRANKI COMPRESSED PILE COMPANY OF CANADA LIMITED

1835 YONGE STREET



TELEPHONE
HURON 8-9009

TORONTO 7, ONT.

Our Reference:
OP 13154 PG 336
December 22nd, 1954.

SOIL INVESTIGATION REPORT
for
DEPARTMENT OF HIGHWAYS OF ONTARIO
(H.M. Dillon, Consulting Engineers)
at
PROPOSED BRIDGE SITE SANDWICH SOUTH #8.

As requested we carried out a soil investigation at the proposed bridge site, Sandwich South #8, i.e. the junction of Highway #401 and New York Central Railway, near Windsor, Ontario.

REPORT OF INVESTIGATION

Eight percussion tests were made at the locations shown on the Location Sketch. The results are shown on the accompanying diagrams and are summarized as follows.

S U M M A R Y

Hole No:	Ground Surface	2,000 lbs per sq.ft.	4,000 lbs per sq.ft.	6,000 lbs per sq.ft.	Refusal
1	626	621	620	619	616
2	626	621	620	619	616
3	625	619	618	617	615
4	626	621	619	618	616
5	626	620	619	618	615
6	626	620	618	617	615
7	628	622	621	620	618
8	629	621	620	618	616

Two auger borings were made at Holes #3 and #6, with the following results.

Hole #5.

Ground Surface Elevation: 625

0' - 2'	Moist silty clay, mottled gray and brown, slightly stoney
2' - 4'	Moist silty clay, mottled gray and brown, slightly stoney
6' - 7'	Dry sandy clay, slightly stoney
8' - 9'	Very stiff sandy clay, slightly stoney, dry
9' - 10'	Very stiff sandy clay, slightly stoney, dry

Hole #6.

Ground Surface Elevation: 626

0' - 4'	Moist silty clay, mottled gray and brown
4' - 5'	Saturated coarse sand
5' - 6'	Moist sandy clay, slightly stoney
6' - 10'	Stiff sandy clay, slightly stoney
10' - 11'	Very stiff sandy clay, slightly stoney

DISCUSSION

An examination of the percussion test summary indicated that soil conditions are uniform over the entire site.

Although the sugar boring, hole #6, shows saturated coarse sand at a depth of 4 to 5 feet, the sandy clay below this is impervious. No excessive flow of water into an excavation is anticipated from the narrow strata of sand.

A safe bearing capacity of 4000 psf can be found at elevation 618.

W. H. T. Wilson

W. H. T. Wilson, P. Eng.

FRANKI

COMPRESSED FILE COMPANY
OF CANADA LIMITED

PERCUSSION TEST DIAGRAM

FOR: DEPARTMENT OF HIGHWAYS OF ONTARIO

AT: SANDWICH SOUTH # 2.

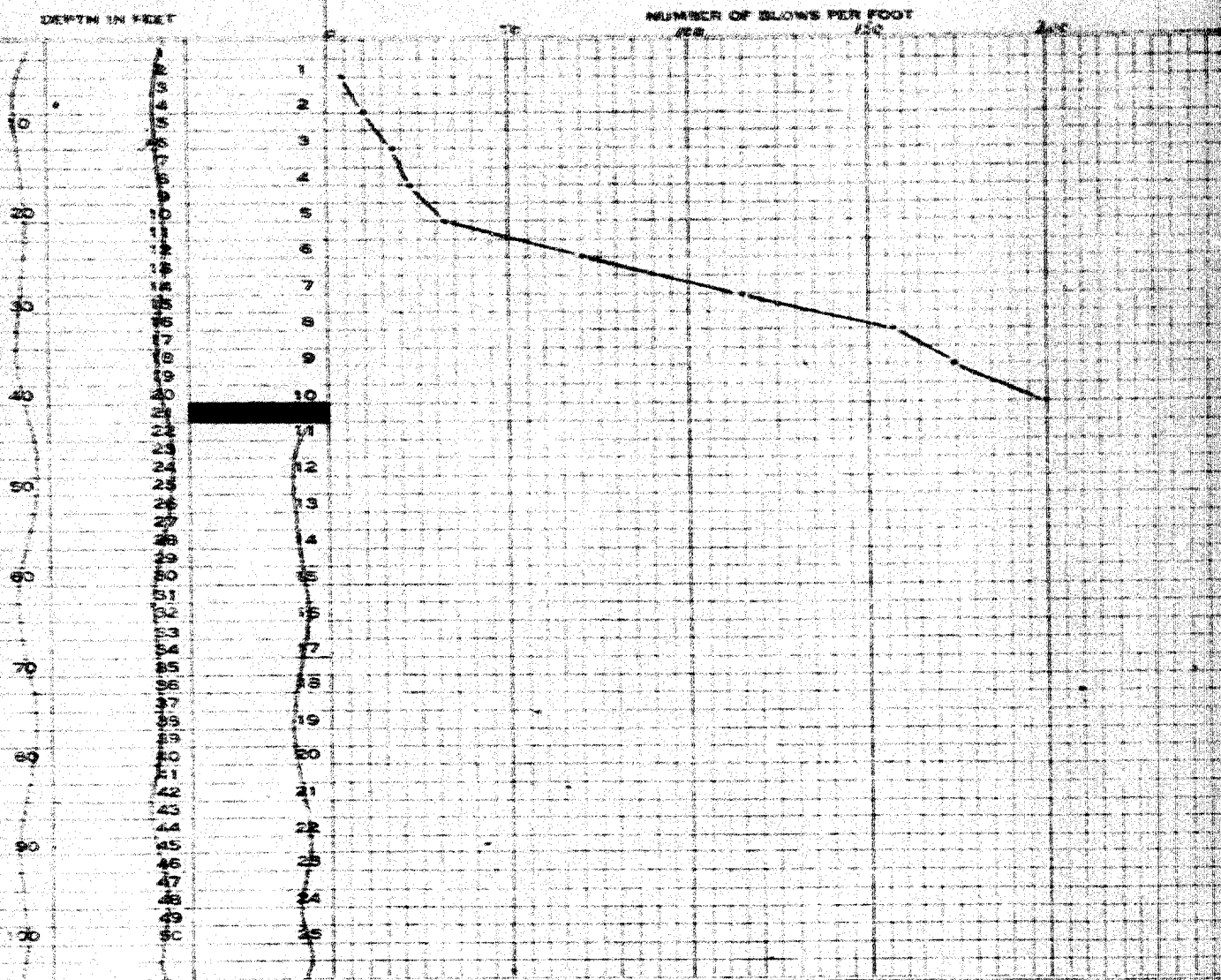
JOB NO. RC 338

DATE: DECEMBER 13th, 1954.

TEST NO.: 1

WEIGHT OF HAMMER 225 lb

DROP 3 ft



Ground Surface Elevation
Refusal Elevation
Number of Blows

626
616
200 for 11"

SIGNED *Donald J. Smith*

FRANKI
COMPRESSED FILE COMPANY
OF CANADA LIMITED

PERCUSSION TEST DIAGRAM

FOR: DEPARTMENT OF HIGHWAYS OF ONTARIO

AT: SANDWICH SOUTH # 8.

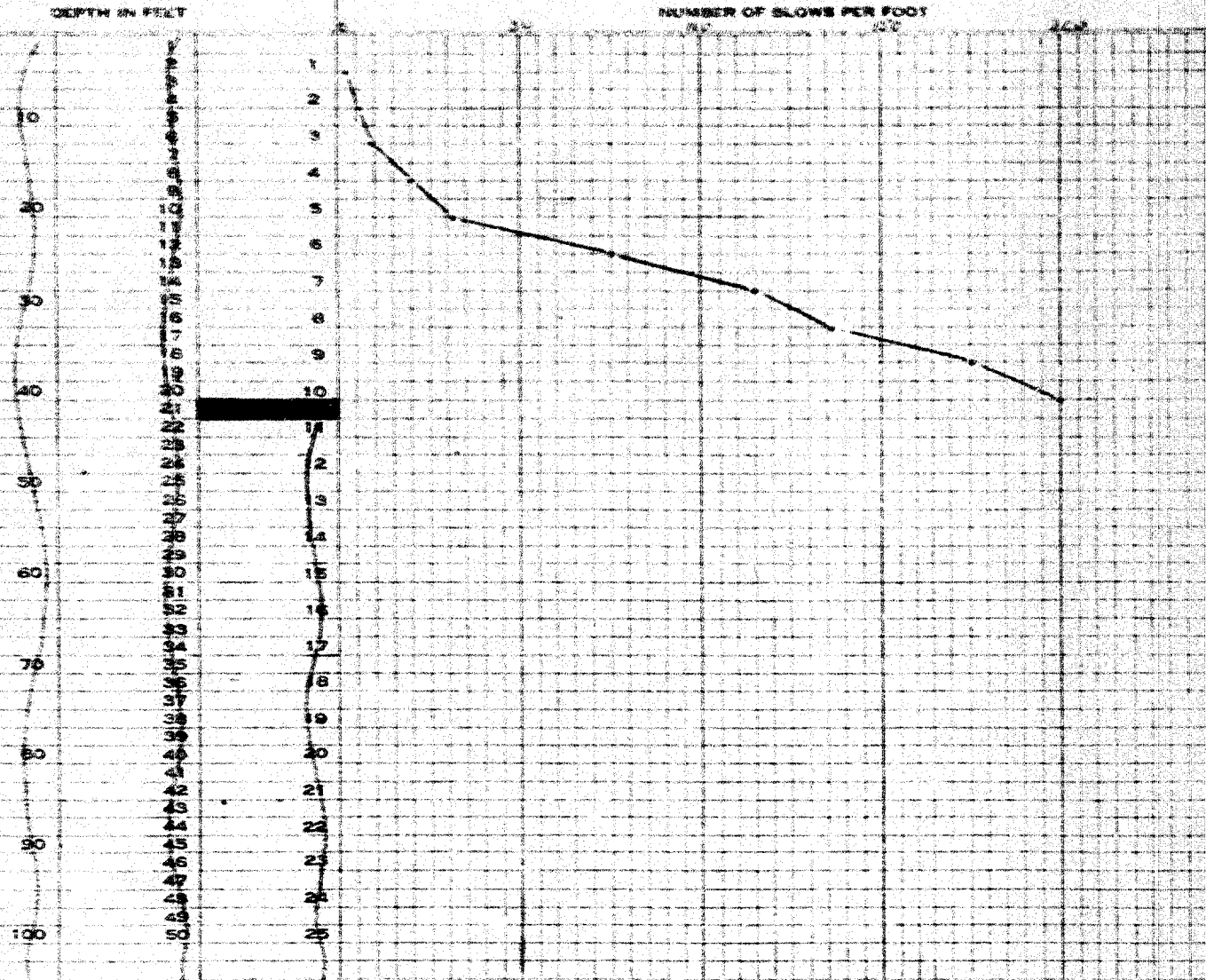
JOB NO. FC 338

DATE: DECEMBER 13th, 1954.

TEST NO. 2

WEIGHT OF HAMMER 2250

DROP 3 FT



Ground Surface Elevation 626
Refusal Elevation 636
Number of Blows 200 for 11"

SIGNED

Walter J. Plafie

FRANKI
COMPRESSED PILE COMPANY
OF CANADA LIMITED

PERCUSSION TEST DIAGRAM

FOR: DEPARTMENT OF HIGHWAYS OF ONTARIO

AT: SANDWICH SOUTH # 8.

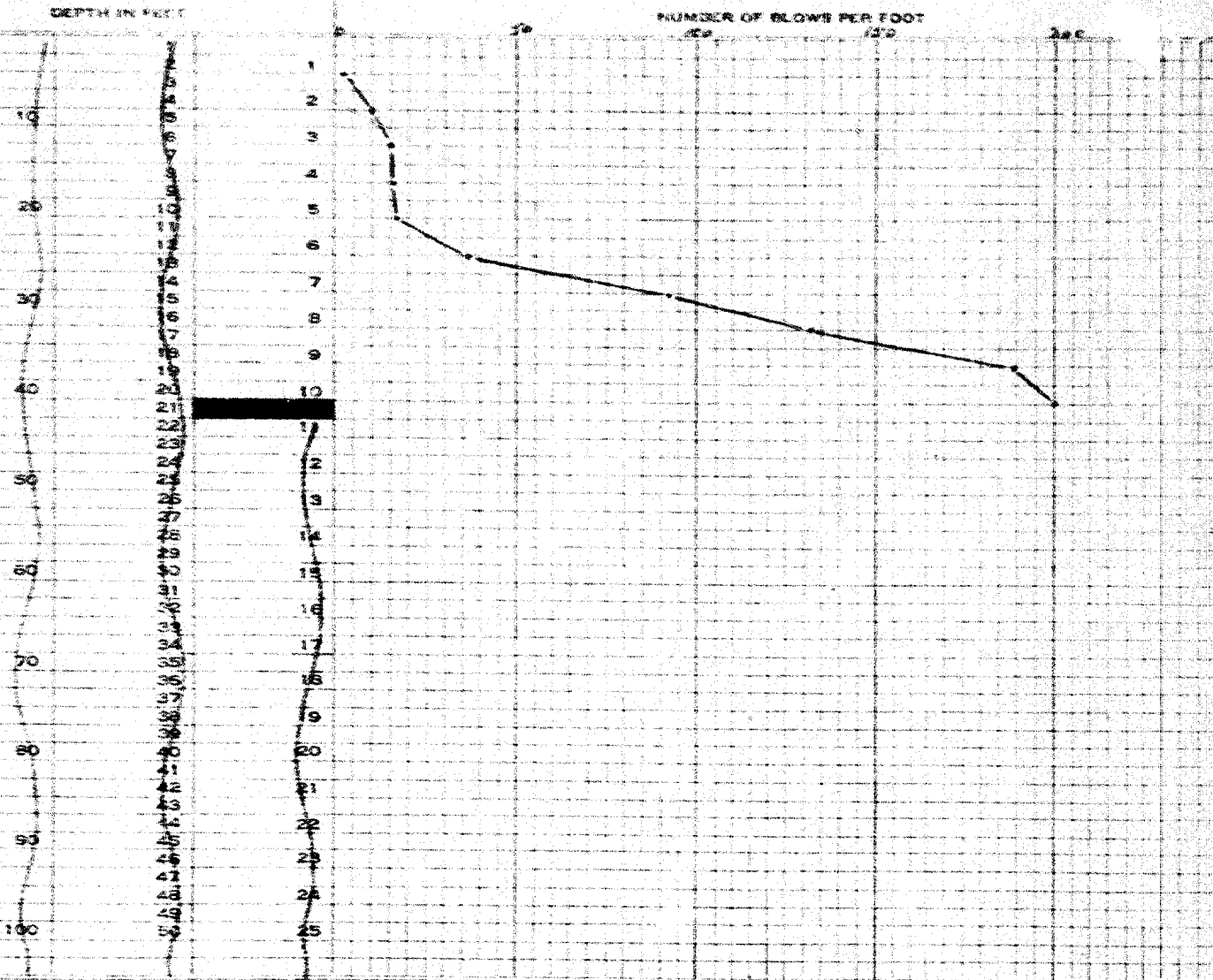
JOB NO. FC 238

DATE: DECEMBER 14th, 1954.

TEST NO. 3

WEIGHT OF HAMMER 2250

DROP 3 FT.



Ground Surface Elevation 625
Refusal Elevation 615
Number of Blows 200 for 9"

SIGNED

Herald J. Bluff

FRANKI

COMPRESSED PILE COMPANY
OF CANADA LIMITED

PERCUSSION TEST DIAGRAM

FOR: DEPARTMENT OF HIGHWAYS OF ONTARIO

AT: SANDWICH SOUTH # 2.

JOB NO. PC 332

DATE: DECEMBER 17th, 1954.

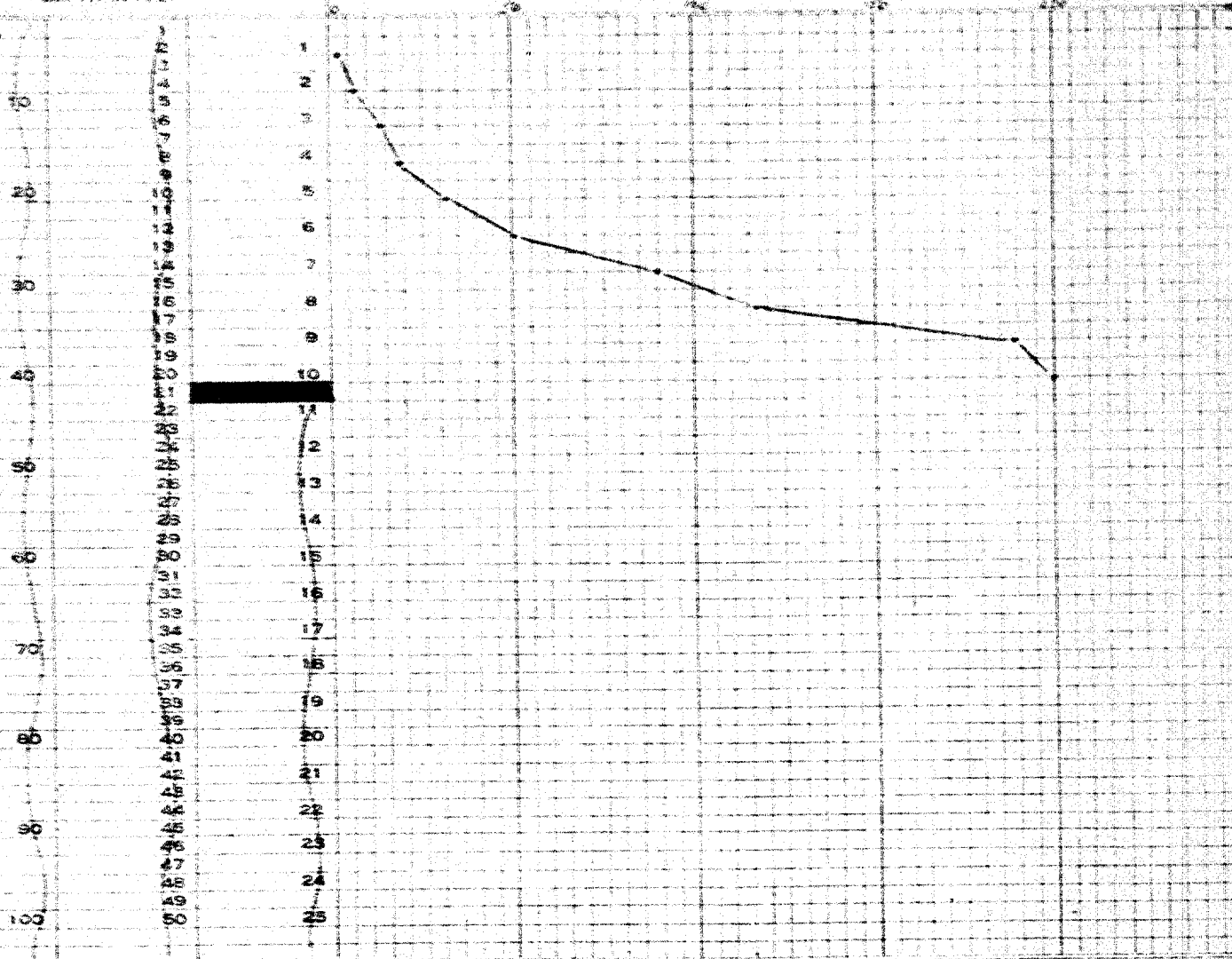
TEST NO. 4

WEIGHT OF HAMMER 2750

DROP 5 FT

DEPTH IN FEET

NUMBER OF BLOWS PER FOOT



Ground Surface Elevation 626
Refusal Elevation 616
Number of Blows 200 for 10'

SIGNED

Donald J. Flaherty

FRANKI
COMPRESSED PILE COMPANY
OF CANADA LIMITED

PERCUSSION TEST DIAGRAM

FOR: DEPARTMENT OF HIGHWAYS OF ONTARIO

AT: SANDWICH SOUTH # 2.

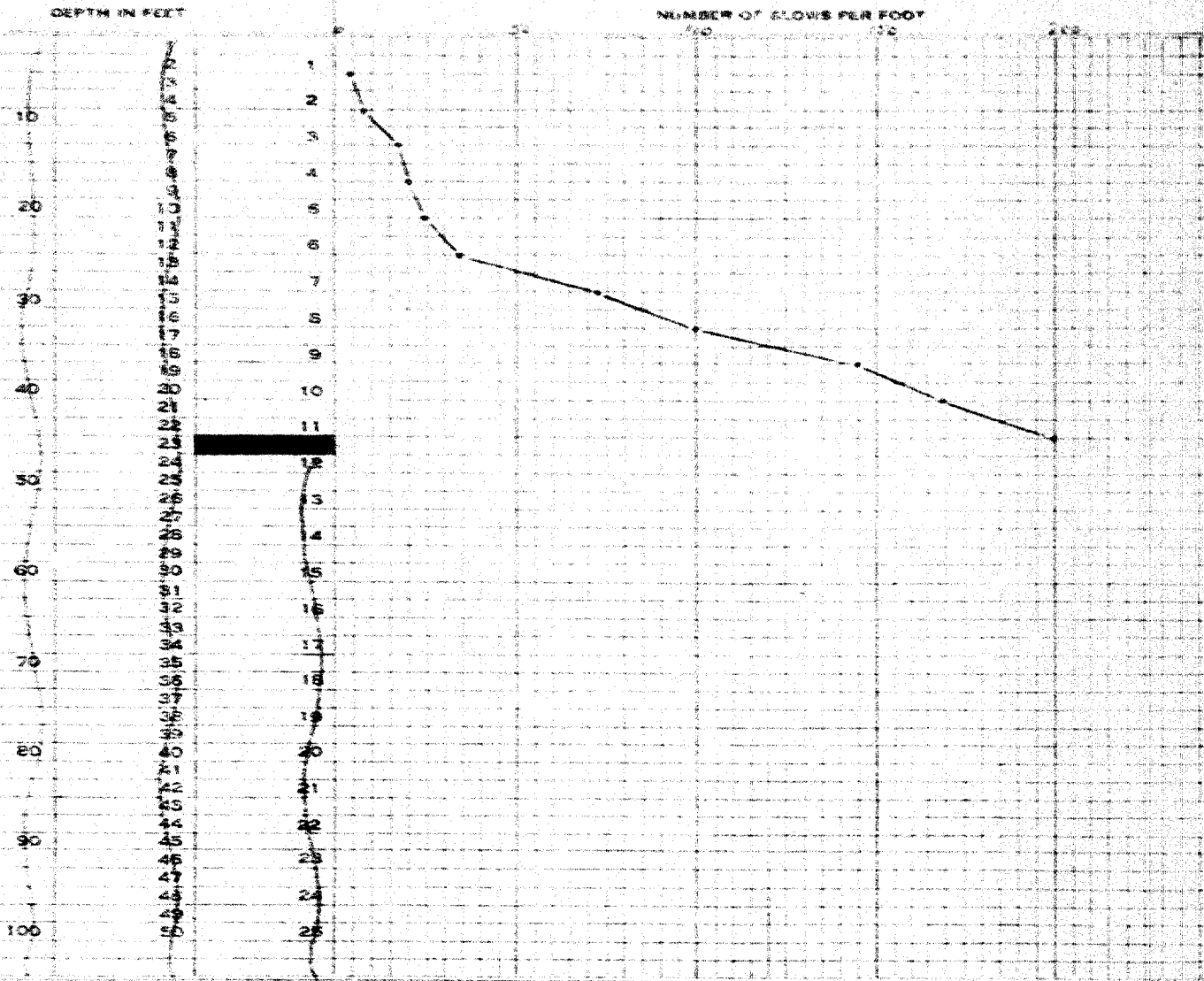
JOB NO. EC 138

DATE: DECEMBER 16th, 1954.

TEST NO. 5

WEIGHT OF HAMMER 225A

DROP 3 FT.



Ground Surface Elevation 626
Refusal Elevation 615
Number of Blows 200

SIGNED

W. J. P. Smith

FRANKI

COMPRESSED PILE COMPANY
OF CANADA LIMITED

PERCUSSION TEST DIAGRAM

FOR: DEPARTMENT OF HIGHWAYS OF ONTARIO

AT: SANDWICH SOUTH # 8.

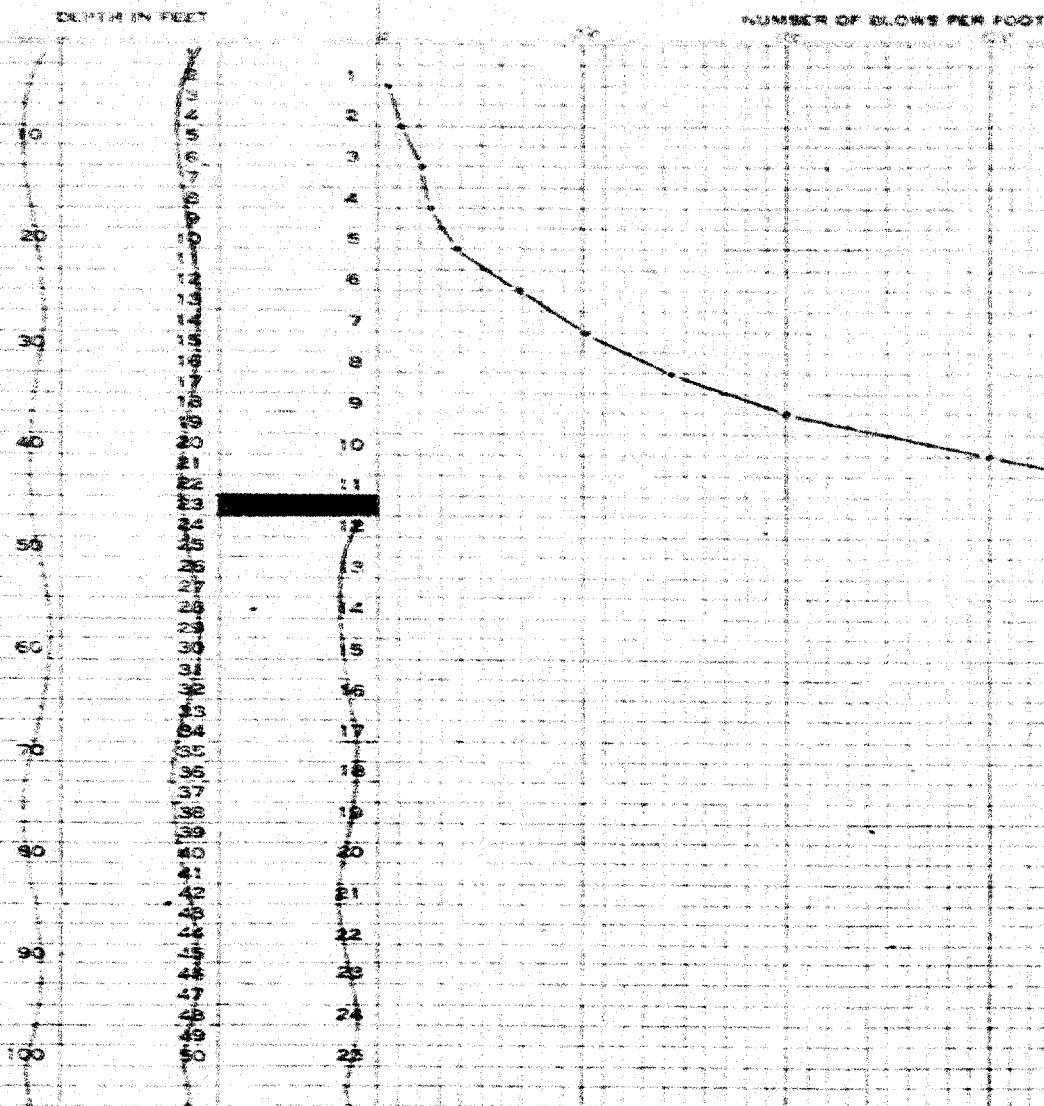
JOB NO. PC 338

DATE: DECEMBER 15th, 1954.

TEST NO.: 6

WEIGHT OF HAMMER 2250

DROP 3 FT



Ground Surface Elevation 626
Refusal Elevation 615
Number of Blows 200 for 10"

SIGNED

Franki

FRANKI

COMPRESSED PILE COMPANY
OF CANADA LIMITED

PERCUSSION TEST DIAGRAM

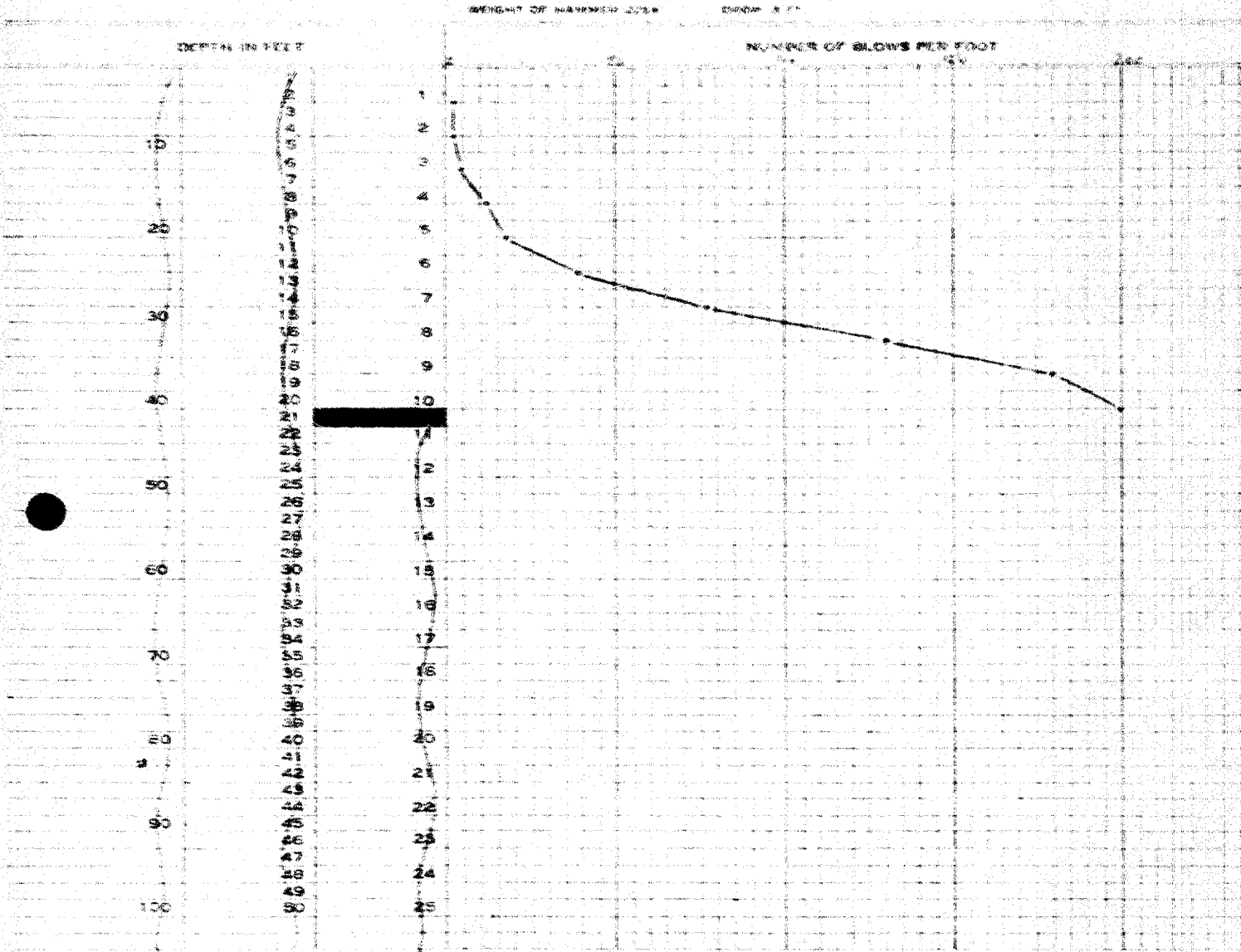
FOR: DEPARTMENT OF HIGHWAYS OF ONTARIO

AT: SANDWICH SOUTH # 8.

JOB NO. PC 338

DATE: DECEMBER 14th, 1964.

TEST NO.: 7



Ground Surface Elevation 628
Refusal Elevation 618
Number of Blows 200 for 10"

SIGNED

Frank J. Reilly

FRANKI
COMPRESSED PILE COMPANY
OF CANADA LIMITED

PERCUSSION TEST DIAGRAM

FOR: DEPARTMENT OF HIGHWAYS OF CANADA

AT: SANDLICH SOUTH # 8.

JOB NO. RC 318

DATE: JUNE 16th, 1964

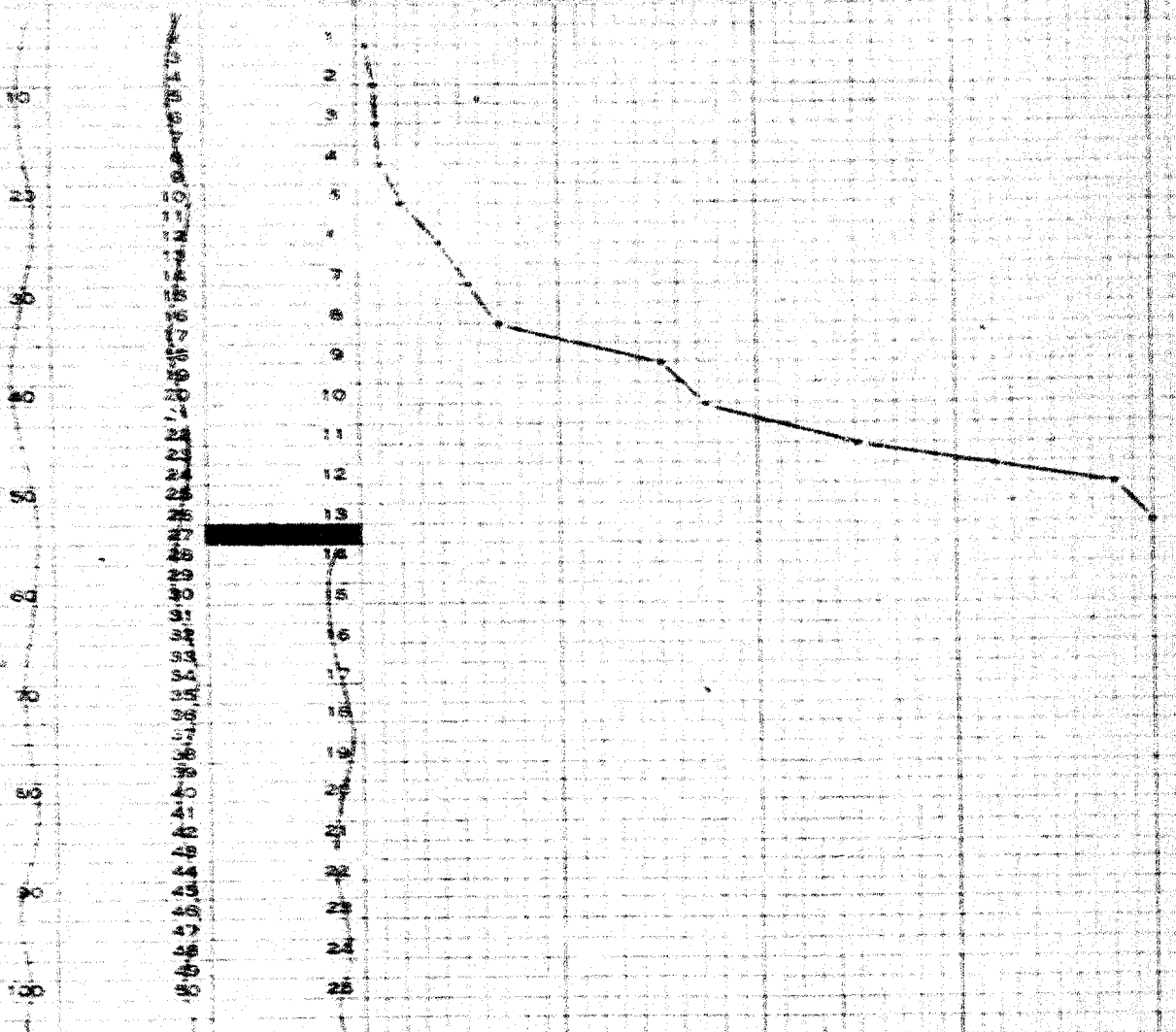
TEST NO.: 8

WEIGHT OF HAMMER 2250

DROP 30"

DEPTH IN FEET

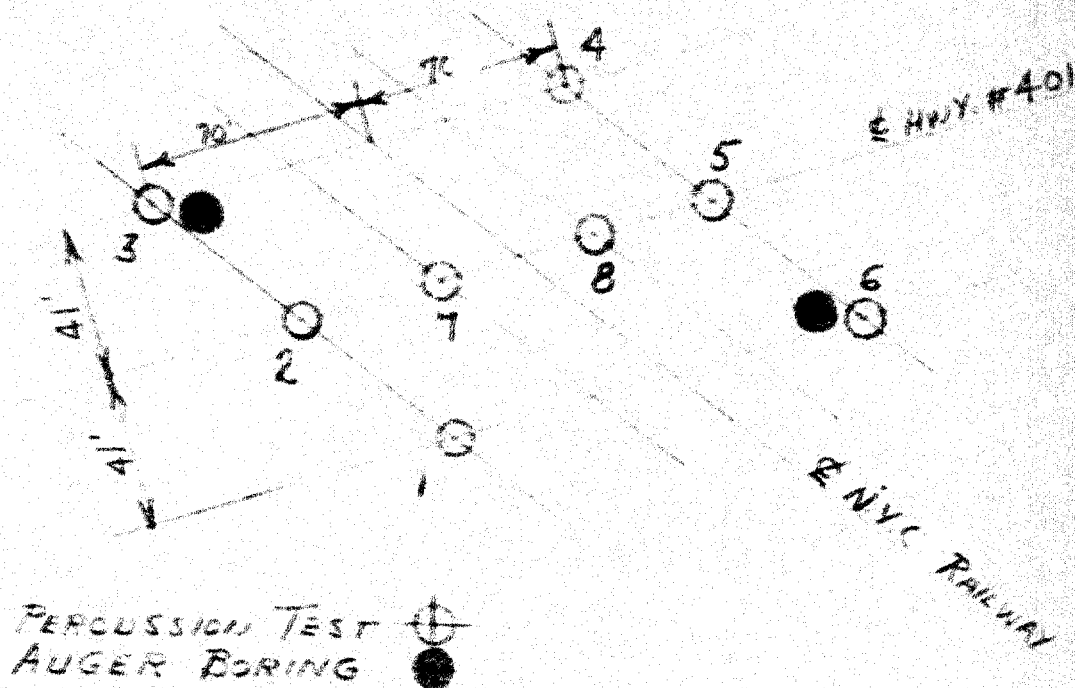
NUMBER OF BLOWS PER FOOT



Ground Surface Elevation 629
Refusal Elevation 616
Number of Blows 200 for 11"

SIGNED *Franki*

LOCATION SKETCH



FRANKI COMPRESSED PILE CO. OF CANADA LTD.
for
DEPARTMENT OF HIGHWAYS OF ONT.
at
SANDWICH SOUTH #8.

PC 338
December 22nd, 1954.