

METRIC
DIMENSIONS ARE IN METRES
AND/OR MILLIMETRES UNLESS
OTHERWISE SHOWN. STATIONS
IN KILOMETRES + METRES.

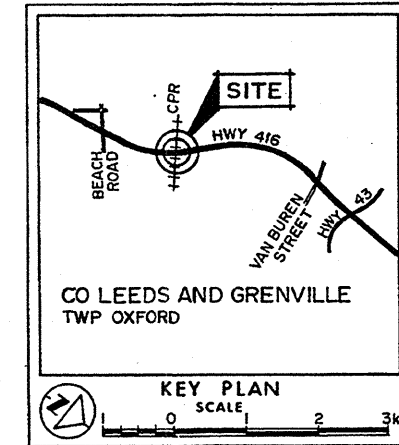
CONT No 97-19
WP No 372-89-04

CPR OVERHEAD
(2.5 km SOUTH OF KEMPTVILLE)
BORE HOLE LOCATIONS & SOIL STRATA



SHEET
310

GEOCON (1991) INC



LEGEND

- ◆ Bore Hole
- ⊕ Dynamic Cone Penetration Test (Cone)
- ◆ Bore Hole & Cone
- N Blows/0.3m (Std Pen Test, 475 J/blow)
- CONE Blows/0.3m (60° Cone, 475 J/blow)
- W.L. at time of investigation Oct./Nov. 1991
- Head, Artesian Water Encountered
- Piezometer
- Test Pit

No	ELEVATION	CO-ORDINATES	
		NORTH	EAST
10-1	96.2	4 984 512.6	374 551.3
10-2	96.1	4 984 682.3	374 444.5
10-3	96.1	4 984 697.7	374 439.8
10-4	95.8	4 984 692.1	374 430.7
10-5	95.7	4 984 718.7	374 413.5
10-6	95.5	4 984 720.2	374 424.1
10-7	96.2	4 984 728.6	374 412.8
10-8	96.5	4 984 850.6	374 321.4
10-9	95.9	4 984 604.2	374 498.4
10-10	96.0	4 984 776.2	374 378.9
10-11	96.2	4 984 947.4	374 242.7
TP1	101.5	4 984 863.5	374 292.5
TP2	101.5	4 984 899.0	374 271.0

NOTE
The boundaries between soil strata have been established only at Bore Hole locations. Between Bore Holes the boundaries are assumed from geological evidence.

NOTE: The complete foundation investigation and design report for this project and other related documents may be examined at the Engineering Materials Office, Downsview. Information contained in this report and related documents is specifically excluded in accordance with the conditions of Section GC 2.01 of OPS Gen. Cond.

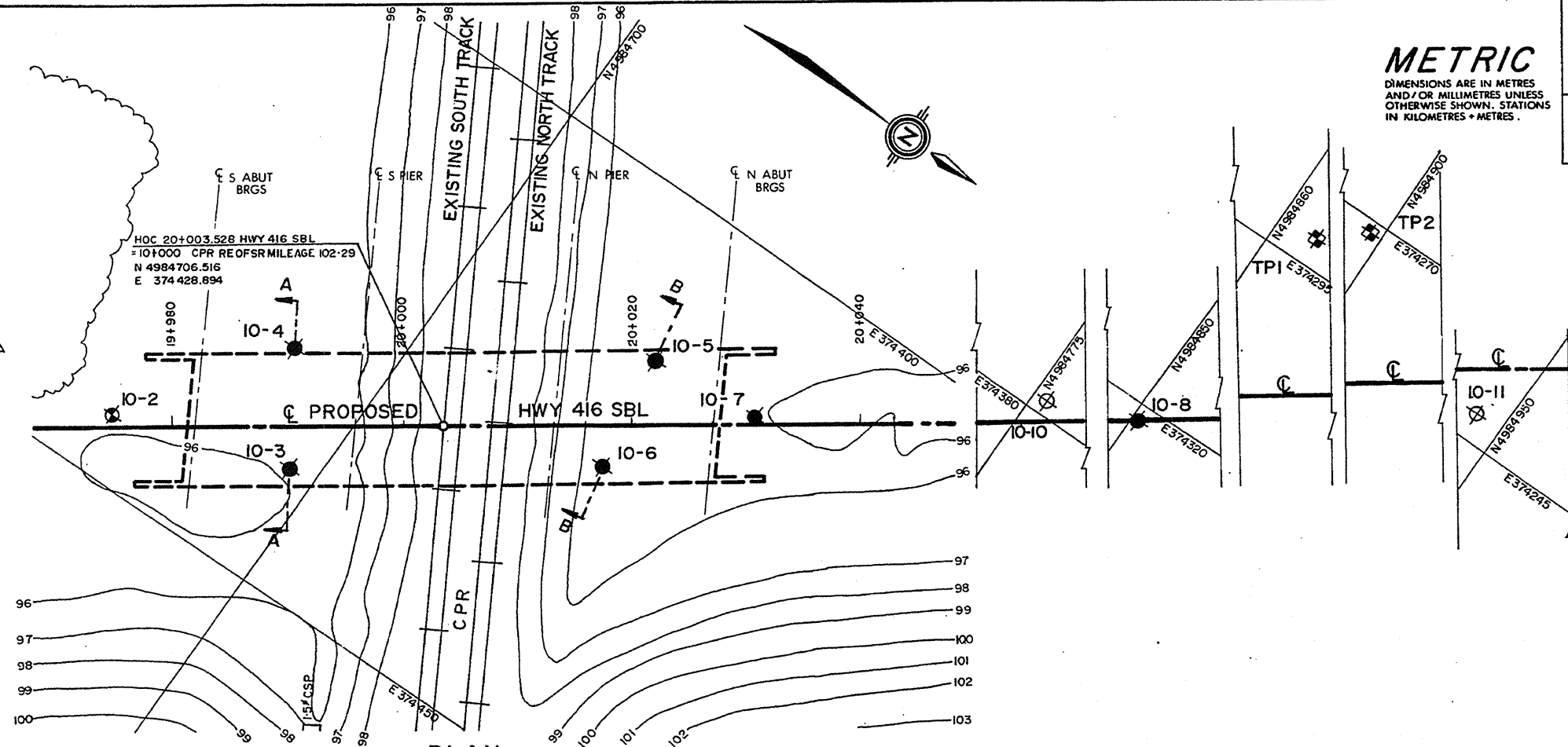
REV.	DATE	BY	DESCRIPTION
1			
2			
3			

Geocres No 31G-208

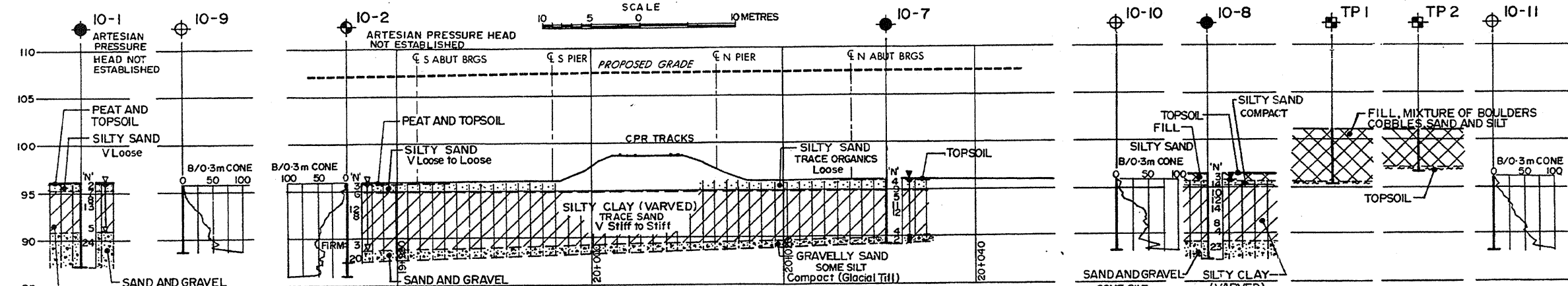
HWY No 416 SBL	DIST 9
SUBM'D NK [CHECKED NK] DATE 1991 08 26	SITE 16-193
DRAWN MCZ [CHECKED RB] APPROVED	DWG 2



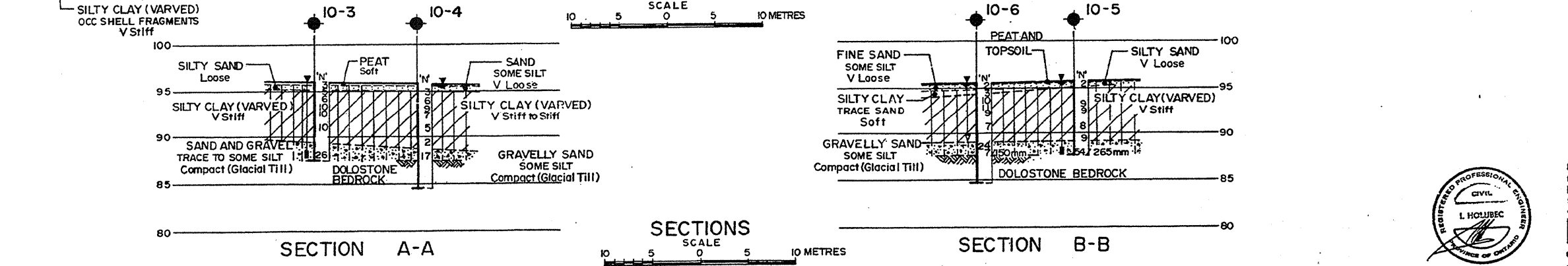
REF No E-53-416-2, 91-04



PLAN
SCALE 1:1000



PROFILE HWY 416 SBL
SCALE 1:100



SECTION A-A
SCALE 1:100

SECTION B-B
SCALE 1:100