

OFFICE LOCATION -

DOWNSVIEW AVE.,
KEELE ST. - HIGHWAY 401
TORONTO, ONTARIO.



ONTARIO
DEPARTMENT OF HIGHWAYS

POSTAL ADDRESS -

DEPARTMENT OF HIGHWAYS
PARLIAMENT BUILDINGS,
TORONTO 2, ONTARIO.

Bridge Division,
August 16, 1960.

*A letter written
to a John Winella
lead in 1960*

F-60-22

MEMORANDUM TO:

Mr. L. Soderman,
Principal Soils & Foundations Eng.,
Room 121,
Downsview.

RE: W.P. 140-59-1 Preliminary
Plan Approval by Soils
Section,
Osnabruck Twp. Br. #3A,
District #9.

Enclosed find one copy of the preliminary plan for the above structure.

The designer seems to have followed the recommendations of the Soils Report #BA 1013 which recommends spread footings founded six feet below existing ground level.

Would you kindly look this drawing over and let us have any comments you wish to make. Would you also indicate the elevation at which you believe the H piles can be stopped to sustain a load of 40 tons per pile.

JBC/ga

J. B. Curtis,
for S. McCombie,
Bridge Planning Engineer

Mr. A. M. Tove,

March 11, 1960.

Bridge Engineer.

Materials & Research Section.

Attention: Mr. S. McCombie.

Re: Preliminary Subsoil Investigation at -
Hwy. 401 and Road crossing in Lot 20 -
(between Con's. II & III), Twp. of
Canabruk, District 9.
W.P. 140-59 (Profile 401-J-59, Sta. 224+60)
W.J. 60-7-22.

A preliminary subsoil investigation, carried out by means of a power auger at the above mentioned site, revealed the following stratification:-

- 0 - 1.5' -- Topsoil.
- 1.5' - 6.5' -- Brown, silty, sandy, clay till.
- 6.5' - 10.5' -- Hard, brown, pebbly, silty, sandy clay till.
- 10.5' - 13.0' -- Grey, pebbly, silty, sandy clay till.


Large boulders or bedrock prevented the advance of the borings from penetrating deeper. There was no apparent water in the holes; the soil was moist, dry.

The subsoil at about 6 ft. below the existing ground level can provide support for spread footing foundations. A safe bearing pressure of 3 t.s.f. is recommended.

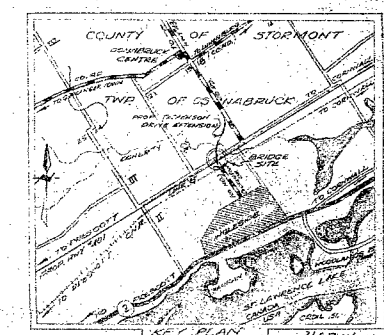
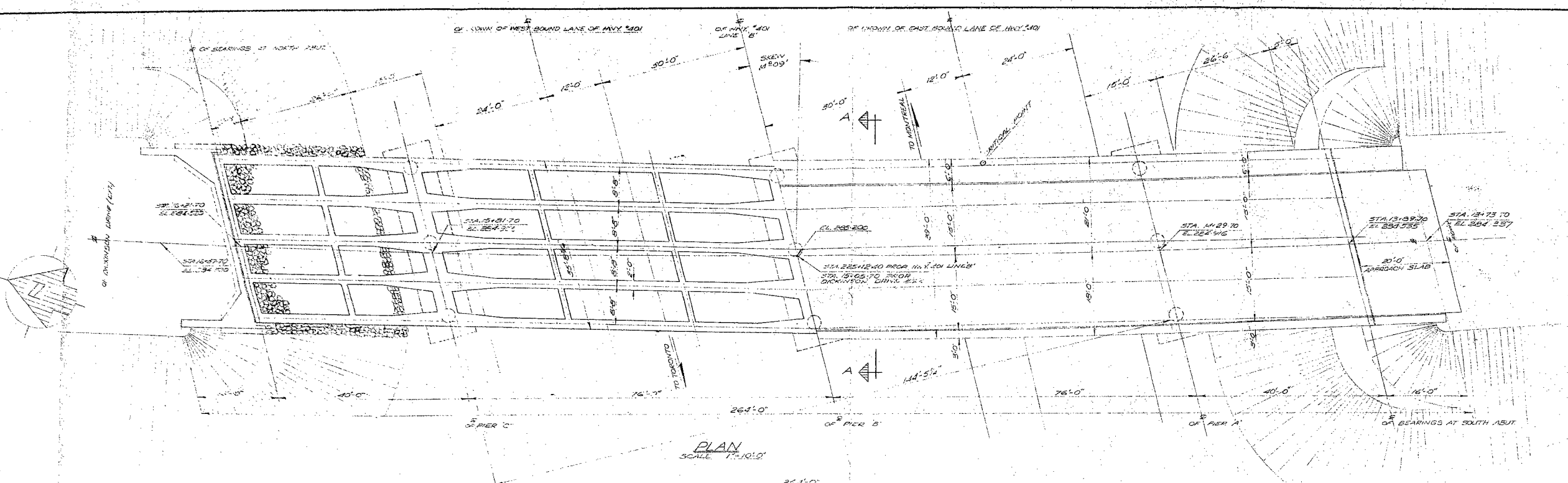
VL/MCWP

cc: Messrs. A. M. Tove (2)
H. A. Tregaskes
D. C. Ramsay
D. J. Ford
L. A. Walker
J. S. Grussier
Foundations Office
Gen. Files.

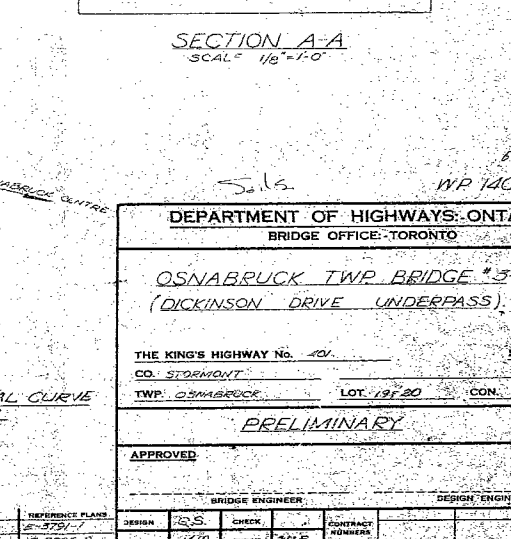
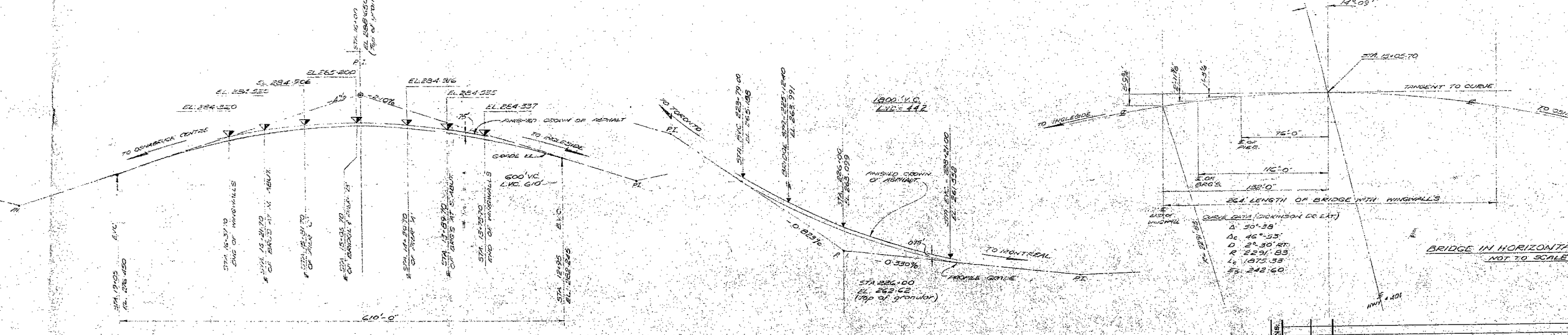
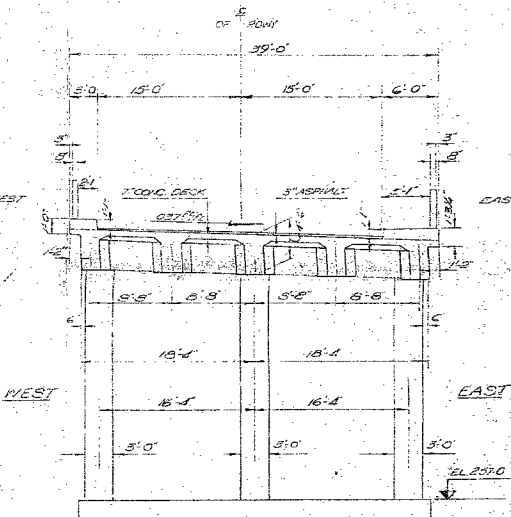
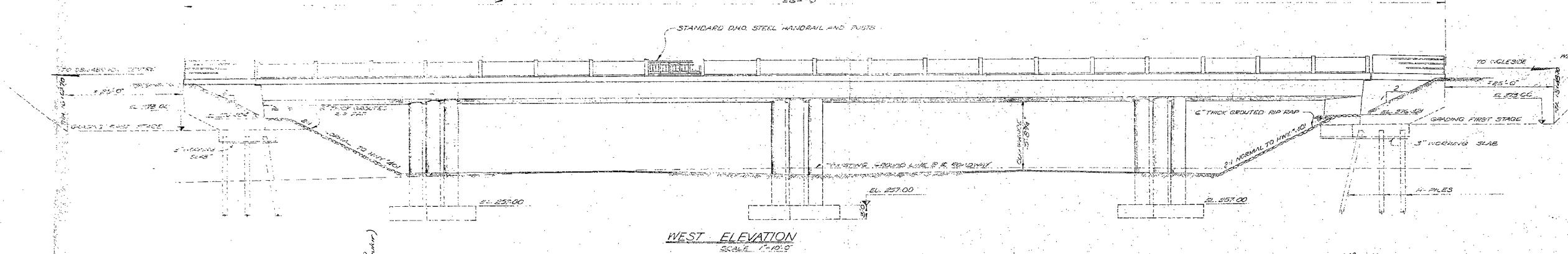
L. C. Soderman,
PRINCIPAL SOILS & FOUNDATIONS ENGR.
per:


(V. Kerlin,
Project Foundation Engr.)

#60-F-22
W.P. # 140-59
HWY #401 & ROAD
CROSSING IN
LOT # 20



3192 W.
6 500120
98924000
2.18



DEPARTMENT OF HIGHWAYS-ONTARIO BRIDGE OFFICE-TORONTO			
OSNABURCK TWP BRIDGE #34 (DICKINSON DRIVE UNDERPASS)			
THE KING'S HIGHWAY No. 401		DIST. NO. 37	
CO. STORMONT		TWP. OSNABURCK	
LOT 191-20		CON. 11-12	
PRELIMINARY			
APPROVED			
BRIDGE ENGINEER		DESIGN ENGINEER	
DESIGN	10/5	CHECK	10/5
DRAWING	10/5	CHECK	10/5
TRACING	10/5	CHECK	10/5
DATE	10/5	DATE	10/5
REFERENCE PLANS		CONTRACT NUMBER	
E-5751-1		1120	
E-5751-2		1120	
E-5751-3		1120	
E-5751-4		1120	
E-5751-5		1120	
E-5751-6		1120	
E-5751-7		1120	
E-5751-8		1120	
E-5751-9		1120	
E-5751-10		1120	
E-5751-11		1120	
E-5751-12		1120	
E-5751-13		1120	
E-5751-14		1120	
E-5751-15		1120	
E-5751-16		1120	
E-5751-17		1120	
E-5751-18		1120	
E-5751-19		1120	
E-5751-20		1120	
E-5751-21		1120	
E-5751-22		1120	
E-5751-23		1120	
E-5751-24		1120	
E-5751-25		1120	
E-5751-26		1120	
E-5751-27		1120	
E-5751-28		1120	
E-5751-29		1120	
E-5751-30		1120	
E-5751-31		1120	
E-5751-32		1120	
E-5751-33		1120	
E-5751-34		1120	
E-5751-35		1120	
E-5751-36		1120	
E-5751-37		1120	
E-5751-38		1120	
E-5751-39		1120	
E-5751-40		1120	
E-5751-41		1120	
E-5751-42		1120	
E-5751-43		1120	
E-5751-44		1120	
E-5751-45		1120	
E-5751-46		1120	
E-5751-47		1120	
E-5751-48		1120	
E-5751-49		1120	
E-5751-50		1120	
E-5751-51		1120	
E-5751-52		1120	
E-5751-53		1120	
E-5751-54		1120	
E-5751-55		1120	
E-5751-56		1120	
E-5751-57		1120	
E-5751-58		1120	
E-5751-59		1120	
E-5751-60		1120	
E-5751-61		1120	
E-5751-62		1120	
E-5751-63		1120	
E-5751-64		1120	
E-5751-65		1120	
E-5751-66		1120	
E-5751-67		1120	
E-5751-68		1120	
E-5751-69		1120	
E-5751-70		1120	
E-5751-71		1120	
E-5751-72		1120	
E-5751-73		1120	
E-5751-74		1120	
E-5751-75		1120	
E-5751-76		1120	
E-5751-77		1120	
E-5751-78		1120	
E-5751-79		1120	
E-5751-80		1120	
E-5751-81		1120	
E-5751-82		1120	
E-5751-83		1120	
E-5751-84		1120	
E-5751-85		1120	
E-5751-86		1120	
E-5751-87		1120	
E-5751-88		1120	
E-5751-89		1120	
E-5751-90		1120	
E-5751-91		1120	
E-5751-92		1120	
E-5751-93		1120	
E-5751-94		1120	
E-5751-95		1120	
E-5751-96		1120	
E-5751-97		1120	
E-5751-98		1120	
E-5751-99		1120	
E-5751-100		1120	