

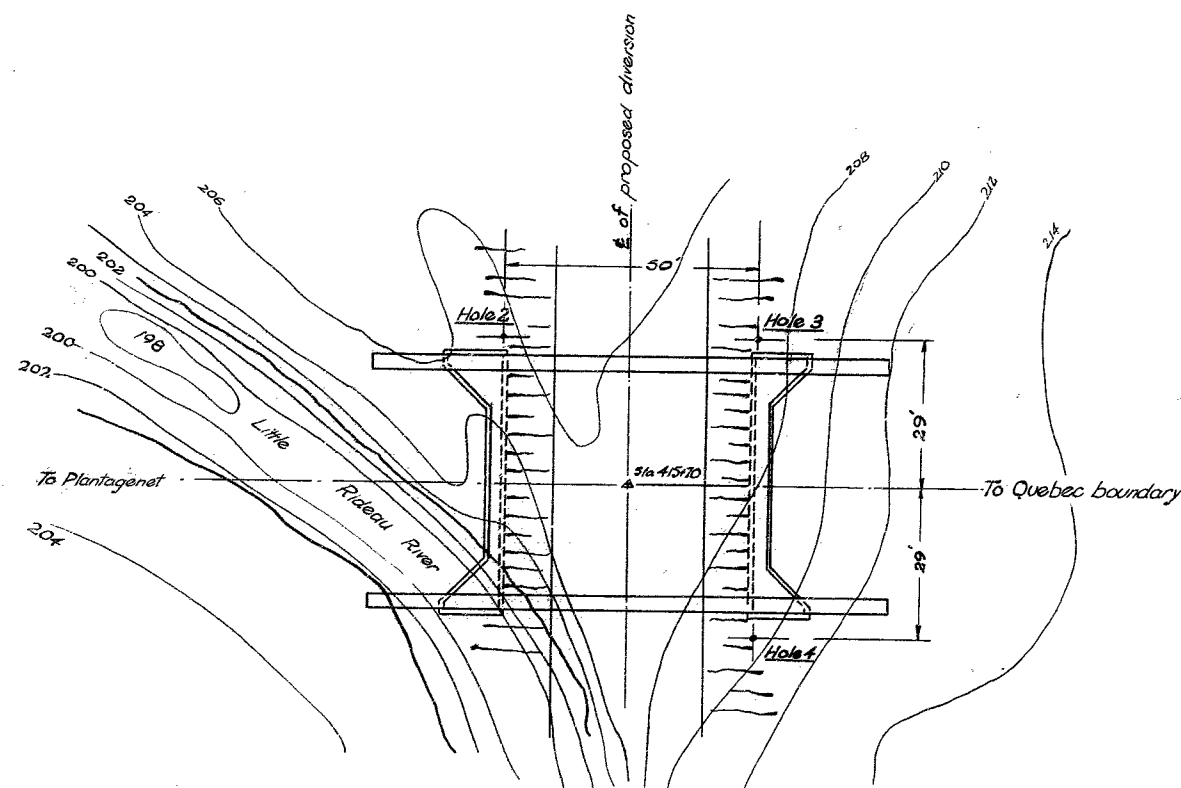
W.O. 54-F-17

LITTLE

RIDEAU

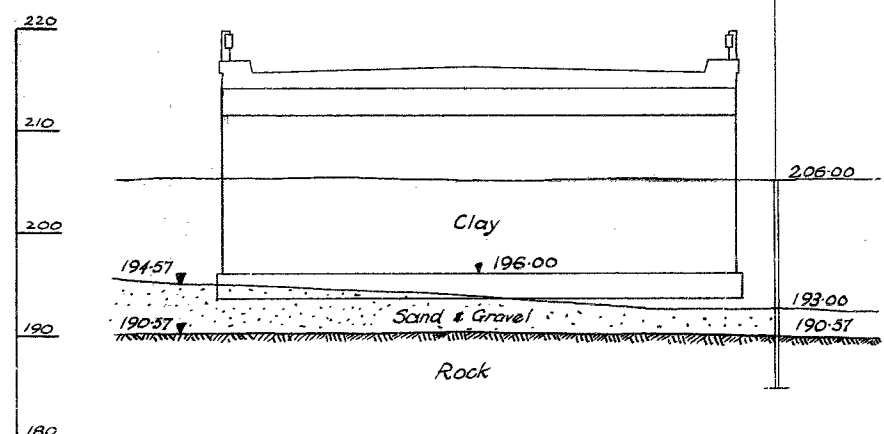
RIVER

314-5



PLAN

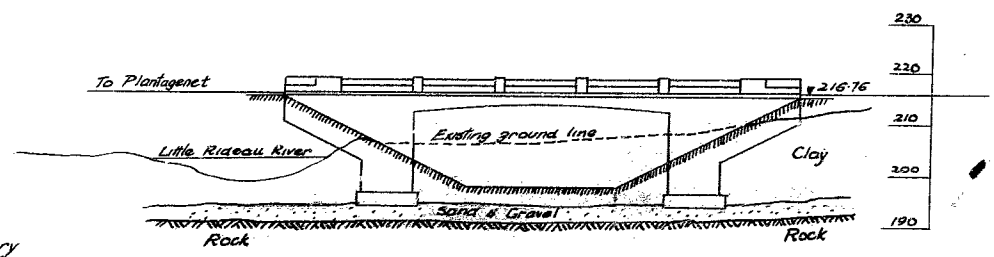
Scale 1" = 20 feet



ELEVATION OF PLANTAGENET

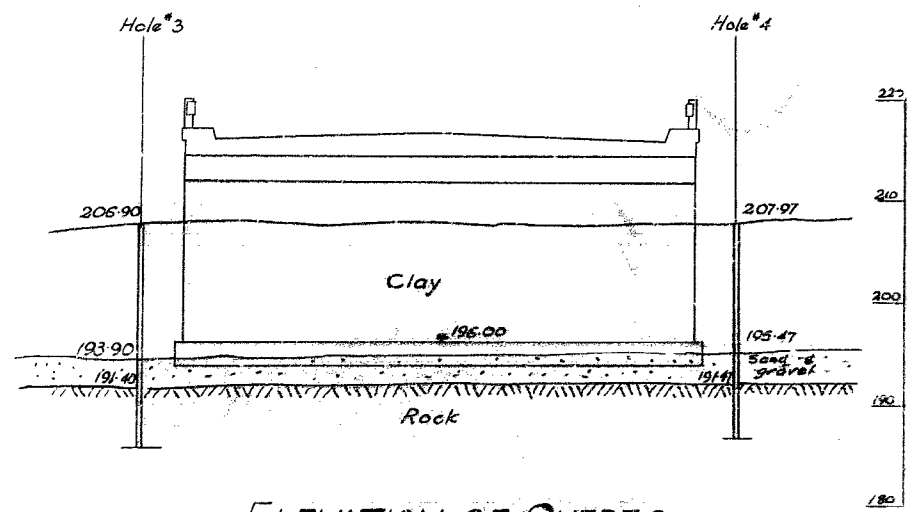
ABUTMENT

Scale 1" = 10 feet



E ELEVATION

Scale 1" = 20 feet



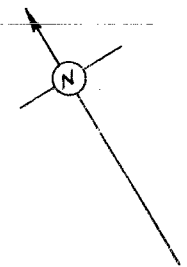
ELEVATION OF QUEBEC

ABUTMENT

Scale 1" = 10 feet

316-5
GEOGRS N.

DEPARTMENT OF HIGHWAYS - ONTARIO		
MATERIALS & RESEARCH BRANCH		
LITTLE RIDEAU RIVER		
Proposed bridge in relation to sub strata		
Scales As shown	Submitted by	Date Oct 28/54
Drawings Traced by P.B.L.A. MOETA	Approved by	Drawing No F-54-17



JOB HAWKESBURY 54-F-1 BORING NO #2
 DATUM 2060 DATE REPORT _____
 COMPILED BY _____ CHECKED BY _____ BORING DATE 18th Dec 1954

ABBREVIATIONS

V-INSITU VANE SHEAR TEST γ - UNIT WEIGHT
 M-MECHANICAL ANALYSIS K - PERMEABILITY
 U-UNCONFINED COMPRESSION C - CONSOLIDATION
 Q_c- TRIAXIAL CONSOLIDATED QUICK CA.- CASING
 Q - TRIAXIAL QUICK WL- WATER LEVEL IN CASING,
 S - TRIAXIAL SLOW WT- WATER TABLE IN SOIL

[illegible]

TL 129
54-90

MATERIALS LABORATORY-DEPARTMENT OF HIGHWAYS - ONTARIO
OFFICE REPORT ON SOIL EXPLORATION

31 G-5
GEOCRE No.

DRILL RIG CORE DRILL #2
CASING BX (STANDARD SAMPLERS TO FIT UNLESS NOTED)
SAMPLER HAMMER WT 230 # DROP 21 INCHES

JOB HAWKESBURY 54-F-17 BORING No. #3
DATUM 206.90 DATE REPORT
COMPILED BY P.B.L. CHECKED BY BORING DATE 20th Oct. 1954

SAMPLE CONDITION

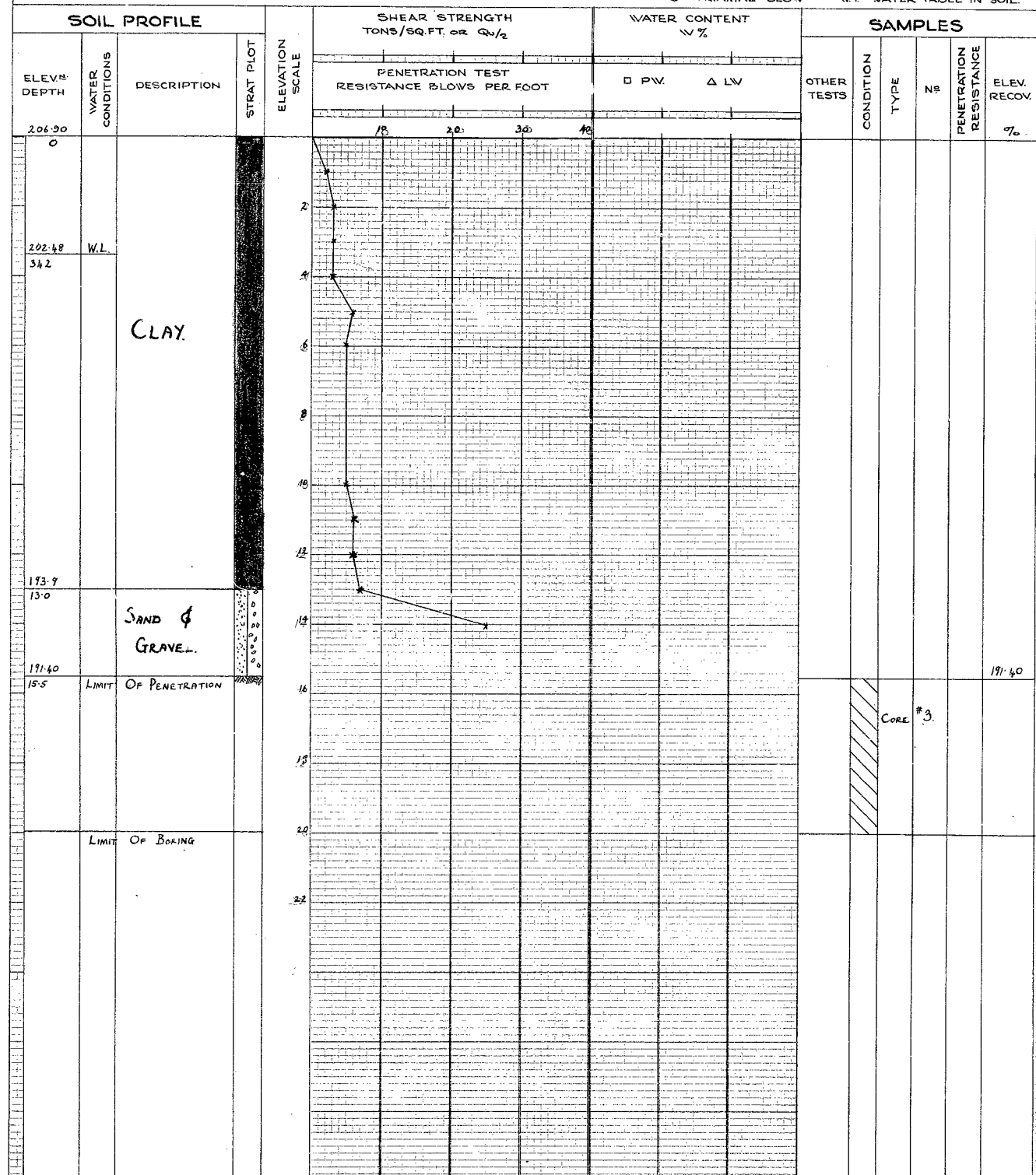


SAMPLE TYPES

C.S. - CHUNK
D.O. - DRIVE OPEN
D.F. - DRIVE FOOT VALVE
W.S. - WASHED SAMPLE
R.C. - ROCK CORE
T.O. - THIN WALLED OPEN

ABBREVIATIONS

V - INSITU VANE SHEAR TEST
M - MECHANICAL ANALYSIS
U - UNCONFINED COMPRESSION
Q_c - TRIAXIAL CONSOLIDATED QUICK
Q - TRIAXIAL QUICK
S - TRIAXIAL SLOW
γ - UNIT WEIGHT
K - PERMEABILITY
C - CONSOLIDATION
CA - CASING
WL - WATER LEVEL IN CASING
WT - WATER TABLE IN SOIL



TL 129
54-90

MATERIALS LABORATORY-DEPARTMENT OF HIGHWAYS - ONTARIO
OFFICE REPORT ON SOIL EXPLORATION

316-5
GEOCRE No.

DRILL RIG CORE DRILL #2
CASING BX (STANDARD SAMPLERS TO FIT UNLESS NOTED)
SAMPLER HAMMER WT 250 *
DROP 20 1/2 INCHES

JOB HAWKESBURY 5A-E-7
DATUM 201.17
COMPILED BY P.B.L. CHECKED BY

BORING NO 4
DATE REPORT
BORING DATE 21 Oct, 1954

SAMPLE CONDITION



DISTURBED
GOOD
LOST

SAMPLE TYPES

C.S - CHUNK
D.O - DRIVE OPEN
D.F - DRIVE FOOT VALVE
T.O - THIN WALLED OPEN
W.S - WASHED SAMPLE
R.C - ROCK CORE

ABBREVIATIONS

V - INSITU VANE SHEAR TEST
M - MECHANICAL ANALYSIS
U - UNCONFINED COMPRESSION
Q_c - TRIAXIAL CONSOLIDATED QUICK
Q - TRIAXIAL QUICK
S - TRIAXIAL SLOW
γ - UNIT WEIGHT
K - PERMEABILITY
C - CONSOLIDATION
CA - CASING
WL - WATER LEVEL IN CASING
WT - WATER TABLE IN SOIL

