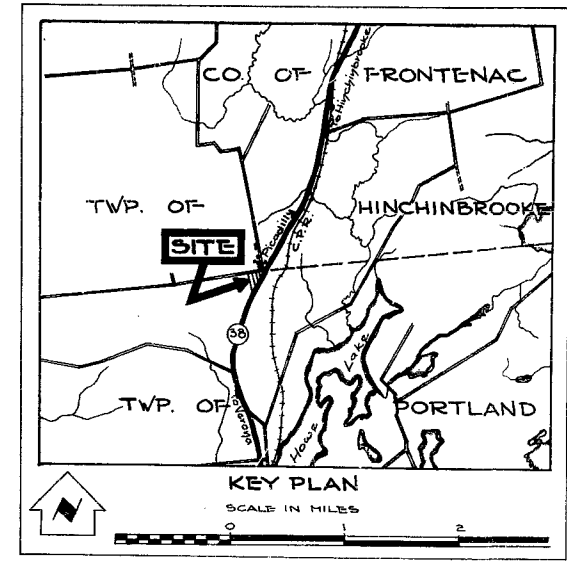
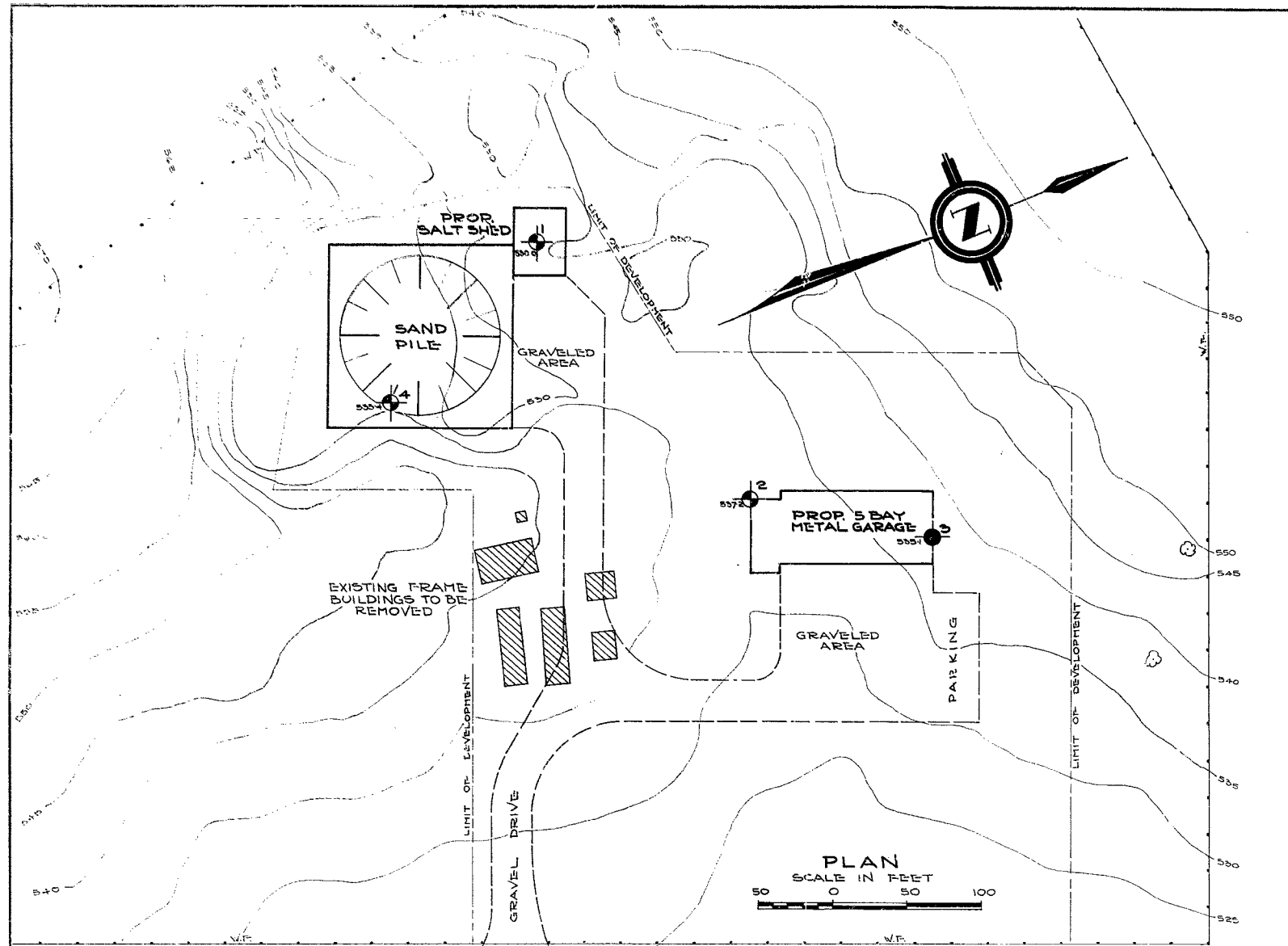


W.O. 63-F-54A

VERONA

PATROL YARD

31C-129



LEGEND

- BORE & CONE PENETRATION HOLE
- POWER AUGER BORINGS

NOTE
THE BOUNDARIES BETWEEN SOIL STRATA HAVE BEEN ESTABLISHED ONLY AT BORE HOLE LOCATIONS. BETWEEN BORE HOLES THE BOUNDARIES ARE ASSUMED FROM GEOLOGICAL EVIDENCE AND MAY BE SUBJECT TO CONSIDERABLE ERROR.

NOTE
The complete soil investigation report for this structure may be examined at the Bridge Office and Foundation Office, Downsview, and at the Kingston District Office. The Department does not guarantee the accuracy of this report or the abridged version shown on these plans.

31C-129
GEORES HS.

DEPARTMENT OF HIGHWAYS - ONTARIO		
MATERIALS & RESEARCH SECTION		
VERONA PATROL YARD		
ORIGINATED W. KULMATICAS	DISTRICT NO. 8	DATE 7 JUNE 65
DRAWN D. G. HOSNOVATUK	W.P. NO.	JOB NO. 63 F-54
CHECKED <i>W. H. D.</i>	SCALE	DRAWING NO.
APPROVED <i>Alf...</i>	AS SHOWN	63 F-54 A

