

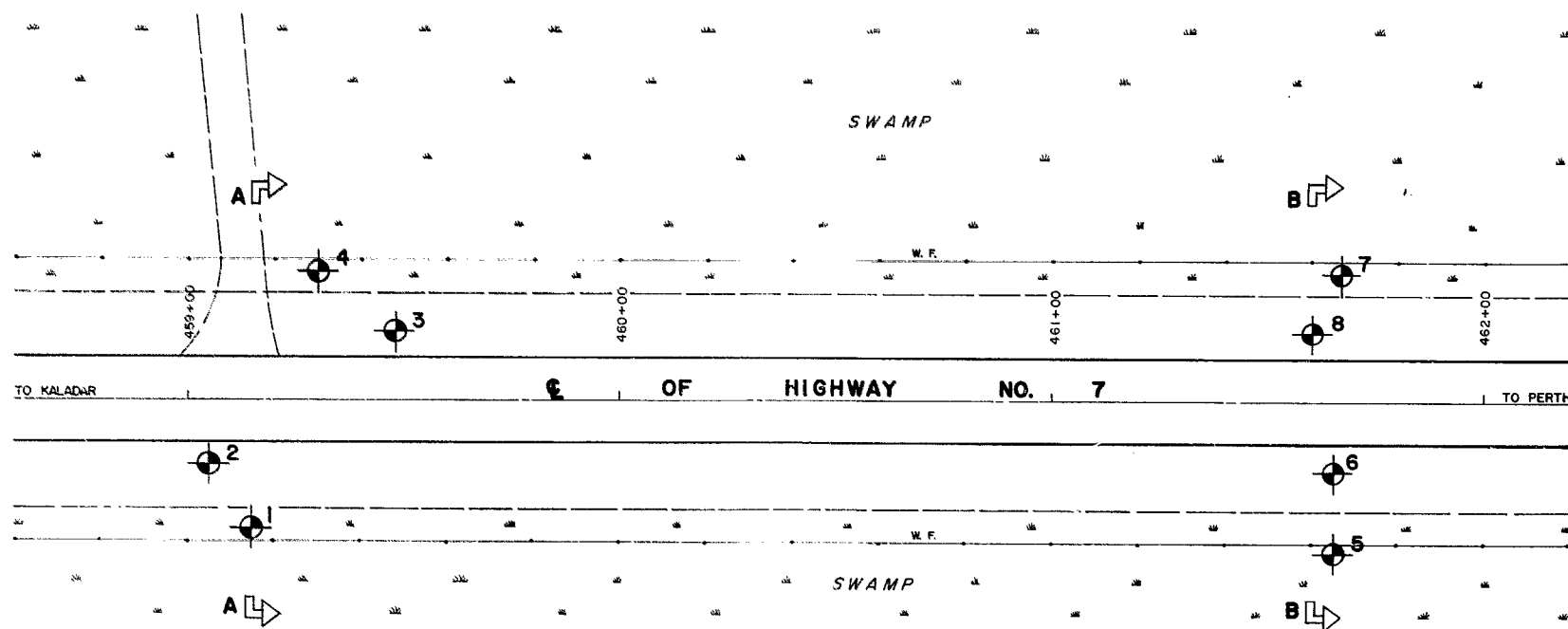
W.O. 61-F-104A

HWY. 7

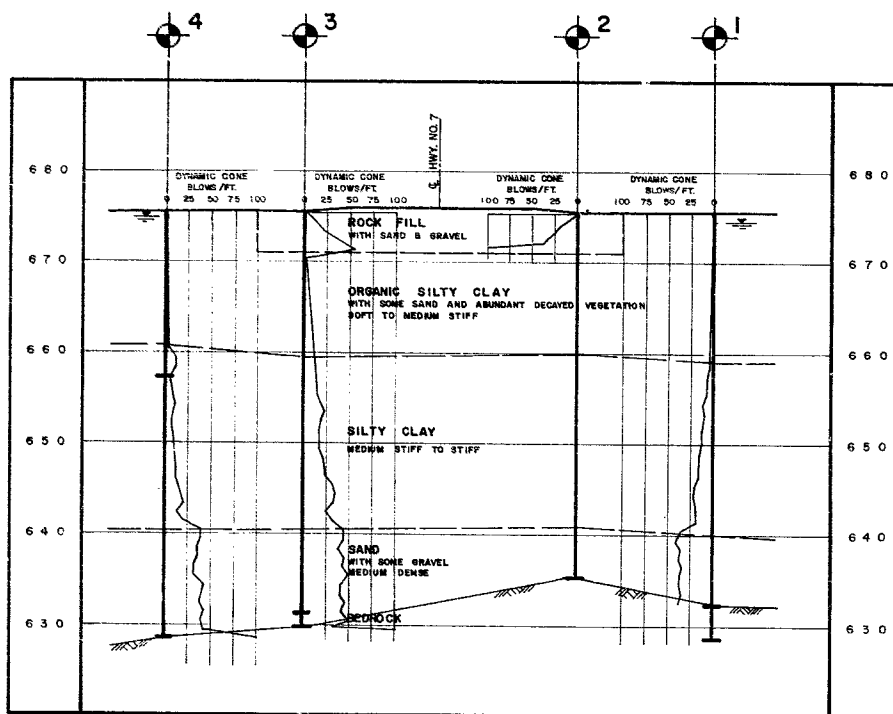
1 $\frac{1}{2}$  MILES EAST OF

KALADAR

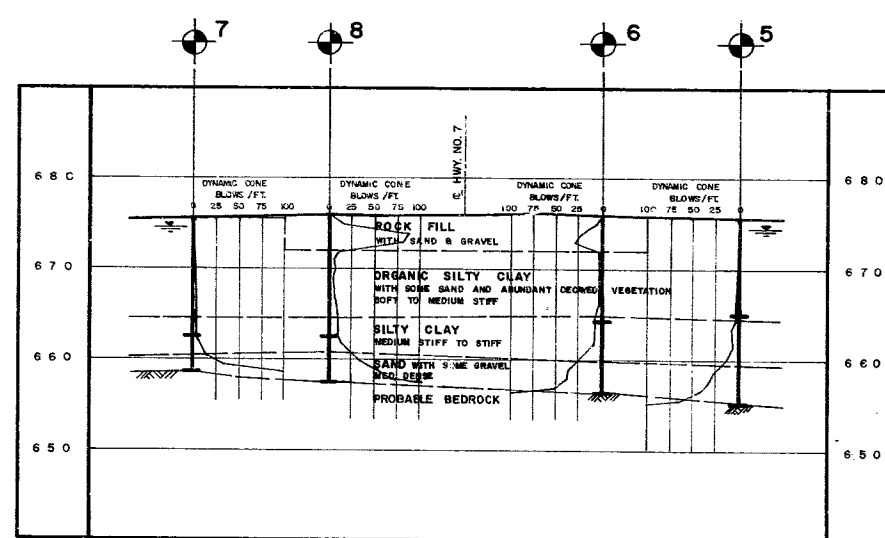
31C-128



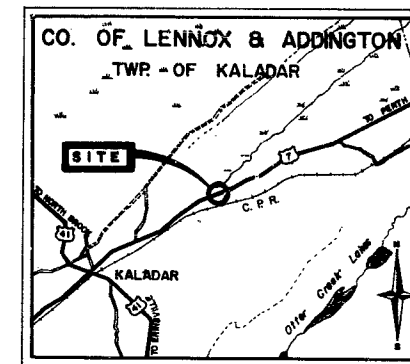
**PLAN**  
SCALE: 1 inch = 20 feet



**A - A**  
SCALE: 1 inch = 10 feet



**B - B**  
SCALE: 1 inch = 10 feet



**KEY PLAN**  
SCALE: 1 inch = 0.5 miles

### LEGEND

- BORE & PENETRATION HOLE
- WATER LEVELS established at time of field investigation. (OCTOBER 1961)

HOLE	ELEVATION	STATION	OFFSET
1	675.5	459+15	30' RT.
2	675.5	459+05	15' RT.
3	675.5	459+48	16' LT.
4	675.0	459+30	30' LT.
5	675.5	461+65	35' RT.
6	676.0	461+65	16' RT.
7	675.5	461+67	30' LT.
8	676.0	461+60	16' LT.

DEPARTMENT OF HIGHWAYS - ONTARIO  
MATERIALS & RESEARCH SECTION

### SECTIONS ON HIGHWAY NO. 7

1 1/2 MILES EAST OF KALADAR

ORIGINATED V. KORLU	DISTRICT NO. 8	DATE 27 OCT. 1961
DRAWN D. MUMFORD	W.P. NO.	JOB NO. 61 - F - 104
CHECKED <i>[Signature]</i>	SCALE	DRAWING NO.
APPROVED <i>[Signature]</i>	AS SHOWN	<b>61 - F - 104 A</b>