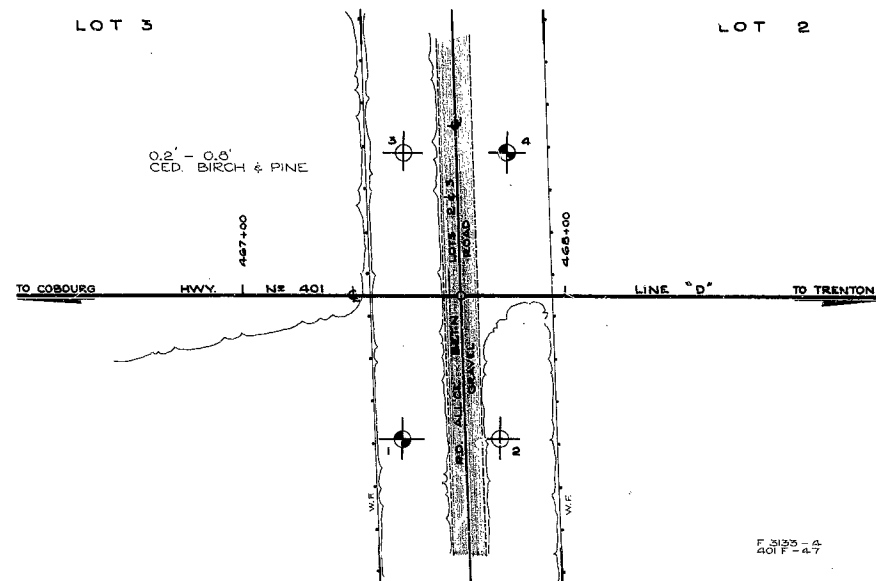


W.O. 57-F-49A

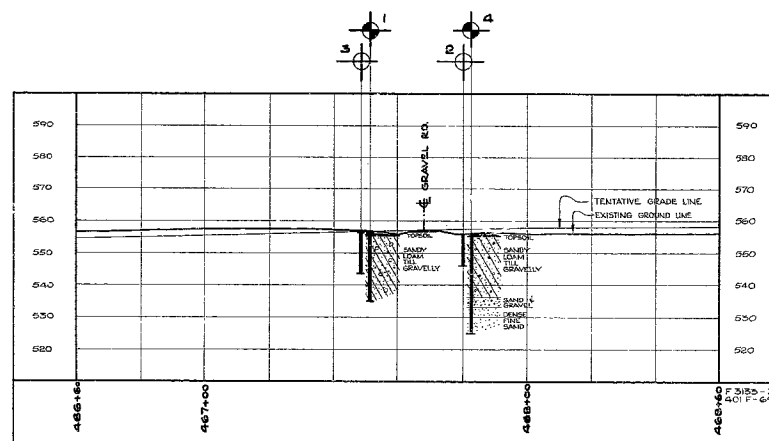
HWY. 401

TWP. HALDIMAND

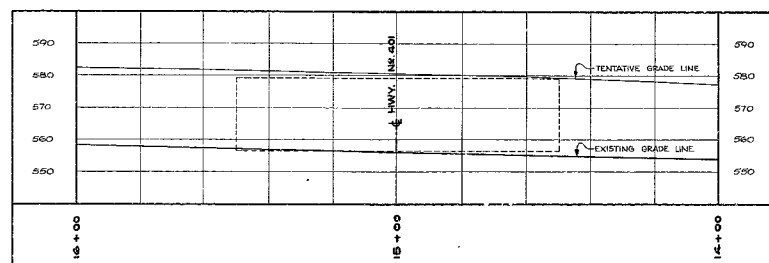
31C-127



PLAN



PROFILE OF HWY. N^o 401



PROFILE OF GRAVEL ROAD

LEGEND			
BORE HOLE			
PENETRATION HOLE			
BORE & PENETRATION HOLE			
HOLE NO.	ELEVATION	STATION	DISTANCE FROM C.
1	556.2'	467+50'	45' RT
2	556.0'	467+80'	45' RT
3	556.5'	467+50'	45' LT
4	556.5'	467+82'	45' LT

315-127
GEOGRAPHIC No.

DEPARTMENT OF HIGHWAYS - ONTARIO		
MATERIALS & RESEARCH SECTION - DOWNSVIEW		
GRAVEL ROAD PROPOSED CROSSING 2 MILES N.W. OF COLBORNE SHOWING POSITION & ELEVATION OF HOLES		
HWY. N ^o 401	W.R.	DIV. N ^o 7
CO. NORTHUMBERLAND	LOTS 2 & 3	CON. 1
TWP. HALDIMAND		
SCALE 1 IN. = 20 FT.	SUBMITTED BY	DATE 8 FEB. 1958
DRAWN BY R.E.F.	APPROVED BY	DRAWING NO. F-57-49A

TL-129 (REV. 56)
DEPARTMENT OF HIGHWAYS - ONTARIO
MATERIALS & RESEARCH BRANCH - FOUNDATIONS SECTION - DOWNSVIEW
OFFICE REPORT ON SOIL EXPLORATION
31C-127
GEOCRE No.
DRILL RIG 54-1 OPERATION BORE & PENET'N JOB F-57-49 WP. BORING 1 STA. 467.50 (45' 27")
CASING BX (standard samplers to fit unless noted) DATUM GEODETIC DATE REPORT JAN. 1958
SAMPLER HAMMER WT. 250 LBS. DROP 19 1/2 INCHES COMPILED BY AL CHECKED BY AL DATE BORING 10 DEC. 1957
ABBREVIATIONS: V - INSITU VANE SHEAR TEST, Q - TRIAXIAL QUICK, K - PERMIABILITY, C.S. - CHUNK, S.S. - SLEEVE SAMPLE, M - MECHANICAL ANALYSIS, S - TRIAXIAL SLOW, C - CONSOLIDATION, D.O. - DRIVE OPEN, P.S. - PISTON SAMPLE, U - UNCONFINED COMPRESSION, WL - WATER LEVEL IN CASING, CA - CASING, D.F. - DRIVE FOOT VALVE, W.S. - WASHED SAMPLE, D.C. TRIAXIAL CONSOLIDATED QUICK, WT - WATER TABLE IN SOIL, U - UNIT WEIGHT, T.O. - THIN WALLED OPEN, R.C. - ROCK CORE
SAMPLE CONDITION: DISTURBED, FAIR, GOOD, LOST
SOIL PROFILE: ELEVATION DEPTH, WATER CONDITIONS, DESCRIPTION, STRAT. PLOT, ELEVATION SCALE, WATER CONTENT W%, PENETRATION TEST RESISTANCE BLOWS PER FOOT, D. CONE PEN. X, STAND. PEN.
SAMPLES: CASING BLOWS (ACTUAL), OTHER TESTS, CONDITION, TYPE, NO., PENETRATION RESISTANCE, ELEV. RECOV.

TL-129 (REV. 56)

H.D.R.

DEPARTMENT OF HIGHWAYS - ONTARIO
MATERIALS & RESEARCH BRANCH - FOUNDATIONS SECTION - DOWNSVIEW

3/C-127
GEOCRETS No.

OFFICE REPORT ON SOIL EXPLORATION

DRILL RIG 54-1 OPERATION PENETRATION JOB T-57-49 W.P. BORING 2 STA. 467+80 (45' RT.)
CASING BX (standard samplers to fit unless noted) DATUM GEODETIC DATE REPORT JAN. 1958
SAMPLER HAMMER WT. 250 LBS. DROP 19 1/2 INCHES COMPILED BY H.I. CHECKED BY AL. DATE BORING 10 DEC. 1957

ABBREVIATIONS
V - INSITU VANE SHEAR TEST Q - TRIAXIAL QUICK K - PERMIABILITY C.S. - CHUNK SAMPLE TYPES
M - MECHANICAL ANALYSIS S - TRIAXIAL SLOW C - CONSOLIDATION D.O. - DRIVE OPEN S.S. - SLEEVE SAMPLE
U - UNCONFINED COMPRESSION WL - WATER LEVEL IN CASING CA - CASING D.F. - DRIVE FOOT VALVE P.S. - PISTON SAMPLE
Qc - TRIAXIAL CONSOLIDATED QUICK WT. - WATER TABLE IN SOIL γ - UNIT WEIGHT T.O. - THIN WALLED OPEN R.C. - ROCK CORE

SAMPLE CONDITION
- DISTURBED
- FAIR
- GOOD
- LOST

SOIL PROFILE

ELEVATION DEPTH
WATER CONDITIONS
DESCRIPTION
STRAT. PLOT
ELEVATION SCALE

WATER CONTENT W%
O - NAT. □ - P.W. Δ - L.W.
PENETRATION TEST RESISTANCE BLOWS PER FOOT
AT STANDARD ENERGY (4200 IN. LBS. PER BLOW)
D. CONE PEN. X-----X-----X STAND. PEN. -----
50 100 150 200

CASING BLOWS (ACTUAL)
OTHER TESTS
CONDITION
TYPE
NO.
PENETRATION RESISTANCE
ELEV. RECOV.

556' GROUND LEVEL
555
550
545
RETURN AT 545' HAMMER BOUNCING

TL-129 (REV. 56)

H.D.R.

DEPARTMENT OF HIGHWAYS - ONTARIO

MATERIALS & RESEARCH BRANCH - FOUNDATIONS SECTION - DOWNSVIEW

31C-127

GEOCRES No.

OFFICE REPORT ON SOIL EXPLORATION

DRILL RIG 54-1 OPERATION PENETRATION JOB F-57-49 W.P. BORING 3 STA. 467+50 (45' LT.)

CASING BX (standard samplers to fit unless noted) DATUM GEODETIC DATE REPORT JAN. 1957

SAMPLER HAMMER WT. 250 LBS. DROP 19 1/4 INCHES COMPILED BY H.F. CHECKED BY AL. DATE BORING 4 DEC. 1957

ABBREVIATIONS

V - INSITU VANE SHEAR TEST

M - MECHANICAL ANALYSIS

U - UNCONFINED COMPRESSION

Q_c - TRIAXIAL CONSOLIDATED QUICK

Q - TRIAXIAL QUICK

S - TRIAXIAL SLOW

WL - WATER LEVEL IN CASING

WT - WATER TABLE IN SOIL

K - PERMIABILITY

C - CONSOLIDATION

CA - CASING

γ - UNIT WEIGHT

C.S. - CHUNK

D.O. - DRIVE OPEN

D.F. - DRIVE FOOT VALVE

T.O. - THIN WALLED OPEN

SAMPLE TYPES

S.S. - SLEEVE SAMPLE

P.S. - PISTON SAMPLE

W.S. - WASHED SAMPLE

R.C. - ROCK CORE

SAMPLE CONDITION

- DISTURBED

- FAIR

- GOOD

- LOST

SOIL PROFILE

ELEVATION DEPTH

WATER CONDITIONS

DESCRIPTION

STRAT. PLOT

ELEVATION SCALE

WATER CONTENT W%

0 - NAT.

□ - P.W.

Δ - L.W.

PENETRATION TEST RESISTANCE BLOWS PER FOOT AT STANDARD ENERGY (4200 IN. LBS. PER BLOW)

D. CONE PEN. X-----X-----X STAND. PEN. -----

50 100 150 200

CASING BLOWS (ACTUAL)

OTHER TESTS

CONDITION

TYPE

NO.

PENETRATION RESISTANCE

ELEV. RECOV.

556.5' GROUND LEVEL

555

550

545

RETURNS AT ELEV. 543.5 HAMMER BOUNCING

TL-129 (REV. 96)

TRIM LINE

DEPARTMENT OF HIGHWAYS - ONTARIO
MATERIALS & RESEARCH BRANCH - FOUNDATIONS SECTION - DOWNSVIEW

31C-127
GEOCRETS No.

DRILL RIG 54-1 OPERATION BORE & PENET JOB F-57-49 W.P. BORING 4 STA 457+82 (45' LT.)
CASING BX (standard samplers to fit unless noted) DATUM GEODETIC DATE REPORT JAN. 1958
SAMPLER HAMMER WT. 250 LBS. DROP 19 1/2 INCHES COMPILED BY H.J. CHECKED BY AL DATE BORING 11 DEC. 1957

ABBREVIATIONS
V - INSITU VANE SHEAR TEST Q - TRIAXIAL QUICK K - PERMIABILITY
M - MECHANICAL ANALYSIS S - TRIAXIAL SLOW C - CONSOLIDATION
U - UNCONFINED COMPRESSION WL - WATER LEVEL IN CASING CA - CASING
Qc - TRIAXIAL CONSOLIDATED QUICK WT - WATER TABLE IN SOIL G - UNIT WEIGHT

SAMPLE TYPES
CS - CHUNK SS - SLEEVE SAMPLE
DO - DRIVE OPEN PS - PISTON SAMPLE
DF - DRIVE FOOT VALVE WS - WASHED SAMPLE
TO - THIN WALLED OPEN RC - ROCK CORE

SAMPLE CONDITION
- DISTURBED
- FAIR
- GOOD
- LOST

SOIL PROFILE

ELEVATION DEPTH	WATER CONDITIONS	DESCRIPTION	STRAT PLOT	ELEVATION SCALE	WATER CONTENT W %	0 - NAT	0 - RW	0 - LW	PENETRATION TEST RESISTANCE BLOWS PER FOOT AT STANDARD ENERGY (4200 IN. LBS. PER BLOW) D. CONE PEN. X-----X-----X STAND. PEN. 0-----200	CASING BLOWS (ACTUAL)	OTHER TESTS	CONDITION	TYPE	NO.	PENETRATION RESISTANCE	ELEV. RECOV.
5.33'		GROUND LEVEL														
555.3'		TOPSOIL		555												556.3'
10'																
		SANDY LOAM TILL GRAVELLY		550												551.3'
				545												546.3'
				540												541.3'
536.3'		SAND & GRAVEL		535												536.3'
20'																
		DENSE FINE SAND		530												531.3'
37'																
625.0'		END OF BOREHOLE		625												626.3'
37.3'																

RETUSAL AT ELEV 536.3'
HAMMER BOUNCING

END OF CASING
AT 625.3'