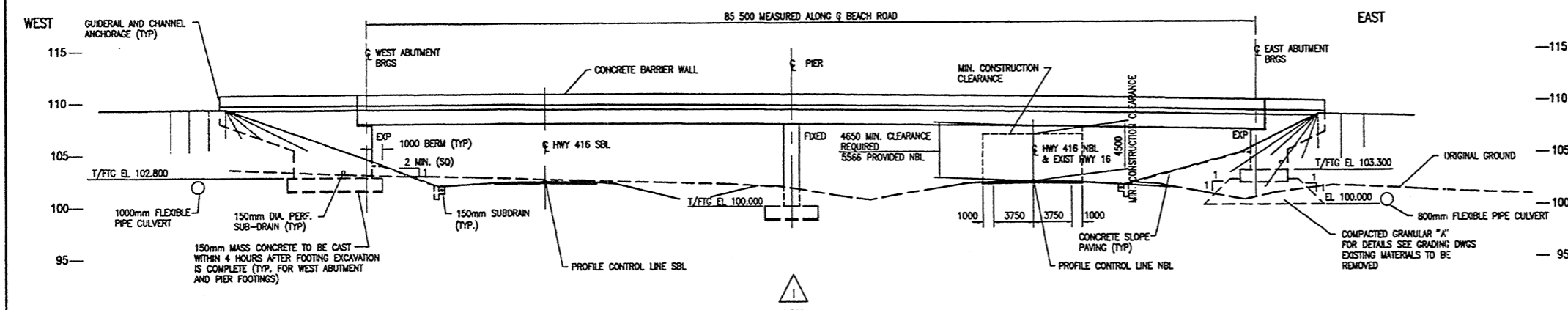
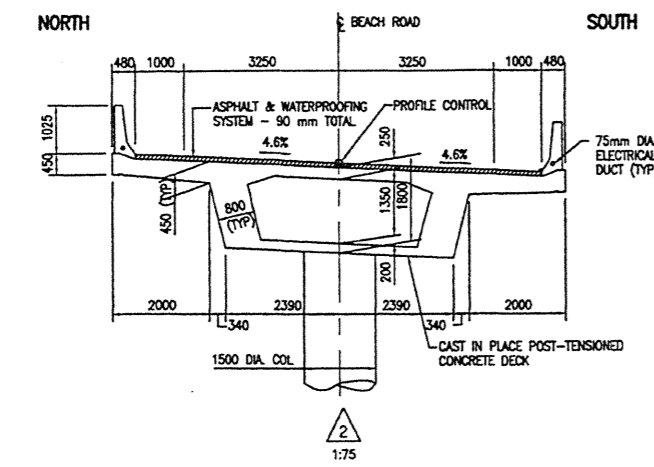


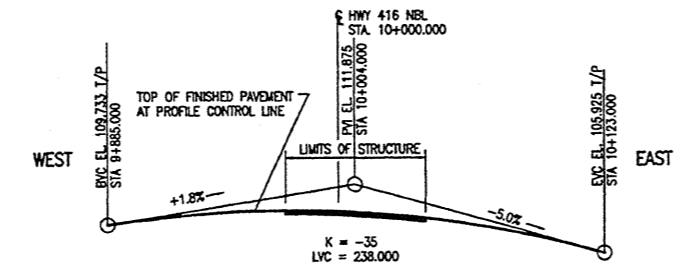
PLAN
1 : 250



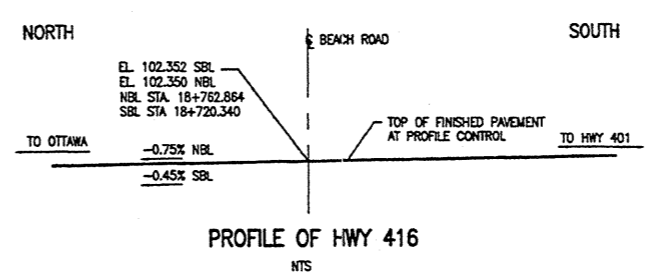
1 : 250



2 : 75



PROFILE BEACH ROAD
NTS



PROFILE OF HWY 416
NTS

METRIC
DIMENSIONS ARE IN METRES
AND/OR MILLIMETRES
UNLESS OTHERWISE SHOWN

DIST. No. 9 HWY 416
CONT. No. 97-19
WP. No. 372-89-03



BEACH ROAD UNDERPASS
BRIDGE No. 9 HIGHWAY 416
GENERAL ARRANGEMENT

SHEET
286

Fenco
FENCO ENGINEERS INC.

GENERAL NOTES
CLASS OF CONCRETE

DECK AND COLUMN	35 MPa
REMAINDER	30 MPa
CLEAR COVER TO REINFORCING STEEL	
FOOTINGS	100 ± 25
ABUTMENTS AND WINGWALLS	
FRONT FACE	80 ± 20
BACK FACE	70 ± 20
COLUMN	80 ± 20
DECK	TOP SLAB - TOP 70 ± 20 BOT. SLAB - TOP 40 ± 10
REMAINDER	60 ± 10 70 ± 20

UNLESS OTHERWISE SPECIFIED
REINFORCING STEEL SHALL BE GRADE 400 UNLESS OTHERWISE SPECIFIED. BAR MARKS WITH SUFFIX "C" DENOTE COATED BARS.

CONSTRUCTION NOTES

THE CONTRACTOR SHALL ESTABLISH THE BEARING SEAT ELEVATIONS BY DEDUCTING THE ACTUAL BEARING THICKNESSES FROM THE TOP OF BEARING ELEVATIONS. IF THE ACTUAL BEARING THICKNESSES ARE DIFFERENT FROM THOSE GIVEN WITH THE BEARING DESIGN DATA, THE CONTRACTOR SHALL ADJUST THE REINFORCING STEEL TO SUIT.

LIST OF DRAWINGS

1. GENERAL ARRANGEMENT
2. BOREHOLE LOCATION AND SOIL STRATA
3. FOUNDATION LAYOUT AND REINFORCEMENT
4. WEST AND EAST ABUTMENTS
5. WEST WINGWALLS
6. EAST WINGWALLS
7. PIER
8. DECK LAYOUT AND DETAILS
9. DECK PRESTRESSING
10. TRANSVERSE TENDONS
11. DECK REINFORCING I
12. DECK REINFORCING II
13. DECK REINFORCING III
14. 6000mm APPROACH SLAB
15. NORTH BARRIER WALL
16. SOUTH BARRIER WALL
17. JOINT ANCHORAGE AND ARMOURING WITH INJECTION HOSE SYSTEM-ASSEMBLY
18. JOINT ANCHORAGE AND ARMOURING WITH INJECTION HOSE SYSTEM-DETAILS
19. DETAILS OF CONCRETE SLOPE PAVING
20. STANDARD DETAILS
21. ELECTRICAL EMBEDDED WORK
22. QUANTITIES - STRUCTURE
23. QUANTITIES - STRUCTURE

APPLICABLE STANDARDS

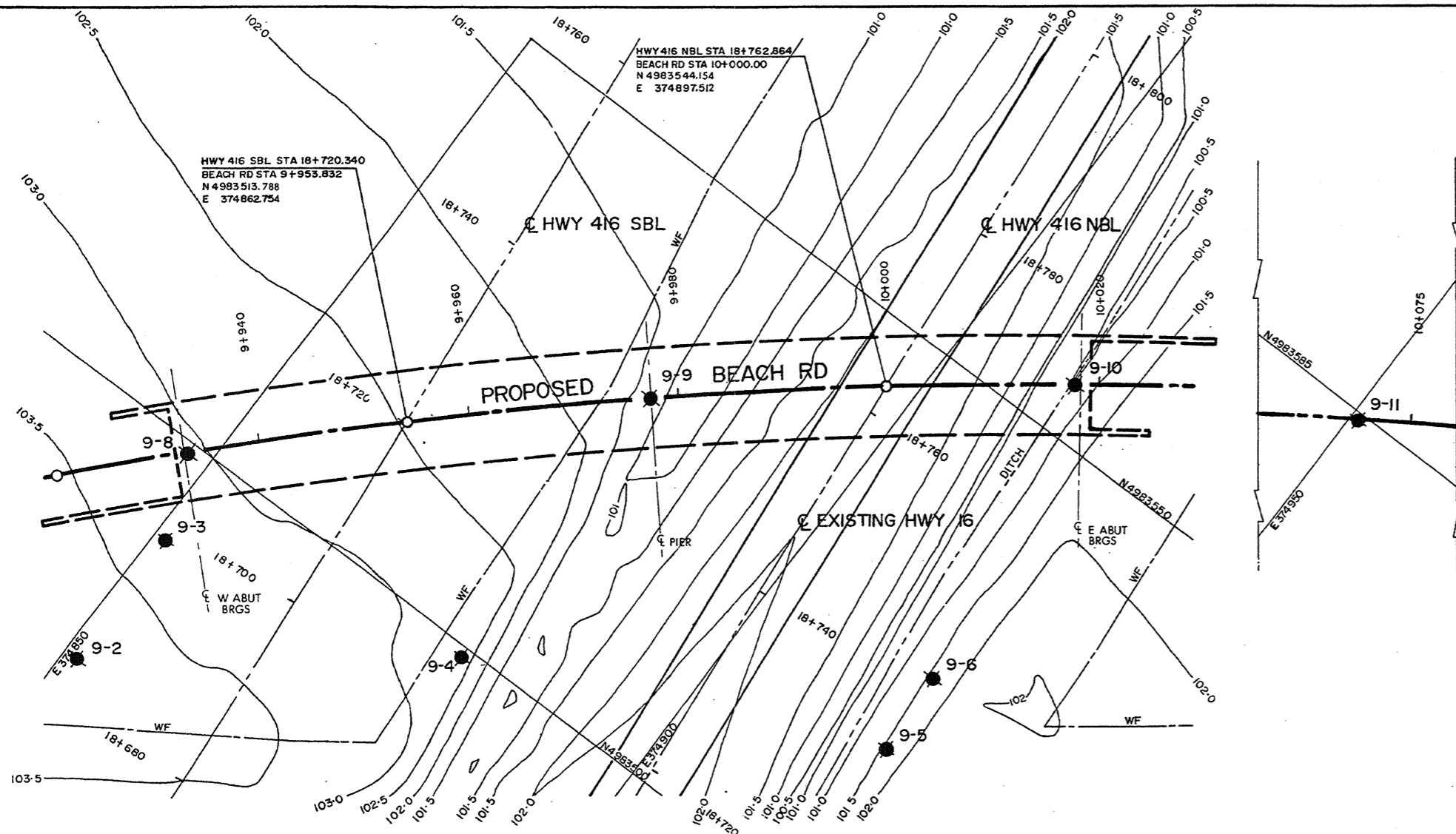
OPSD 3501.00 GRANULAR BACKFILL REQUIREMENTS-ABUTMENTS
OPSD 4810.00 GUIDEWAY AND CHANNEL ANCHORAGE
OPSD 4802.00 FALSEWORK CLEARANCES



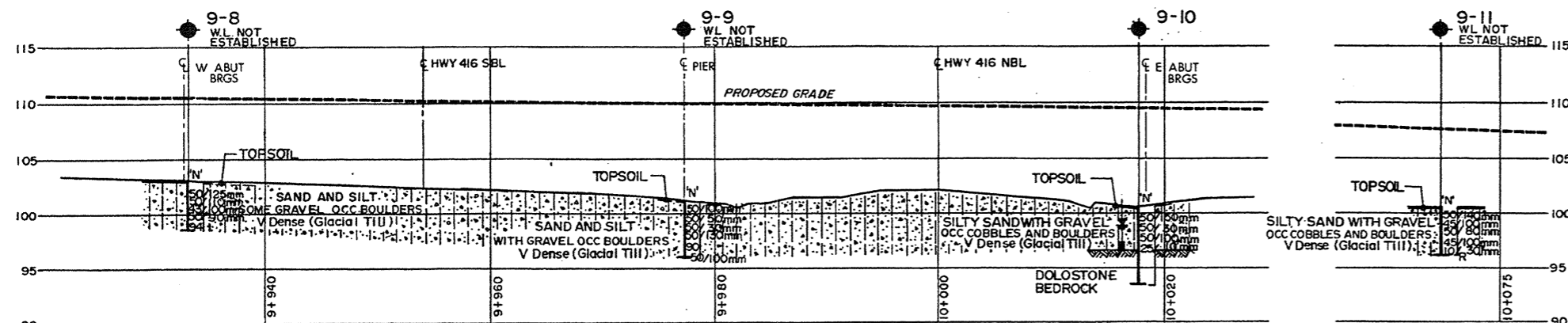
REVISIONS	DATE	BY	DESCRIPTION

DESIGN L NG CHK WYC CODE OHBDC-91 LOAD CLASS A DATE MARCH 1997
DRAWN DW CHK L NG SITE 16-316 STRUCT. SCHEME DWG. 1

FILE: H:\G12211\BEACH-04
JOB No: 15355 AS 03/97
DATE: APR 11 1997 2:00 J.MILSON



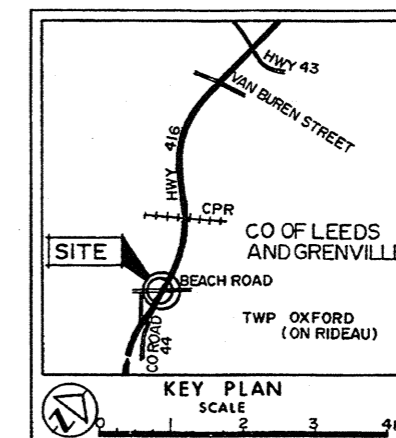
PLAN

SCALE
10 5 0 10 METERS

PROFILE BEACH RD

SCALE
10 5 0 10 METERS**METRIC**DIMENSIONS ARE IN METRES
AND/OR MILLIMETRES UNLESS
OTHERWISE SHOWN. STATIONS
IN KILOMETRES - METRES.CONT No 97-19
WP No 372-89-03HIGHWAY 416 UNDERPASS
(AT BEACH RD)
BORE HOLE LOCATIONS & SOIL STRATASHEET
287

GEOCON (1991) INC



KEY PLAN

SCALE
1 2 3 4 Km

LEGEND

- Bore Hole
- ⊕ Dynamic Cone Penetration Test (Cone)
- ⊕ Bore Hole & Cone
- N Blows/0.3m (Std Pen Test, 475 J/blow)
- CONE Blows/0.3m (60° Cone, 475 J/blow)
- W L at time of investigation
- Piezometer

No	ELEVATION	CO-ORDINATES	
		NORTH	EAST
9-1	105.0	4983464.8	374825.9
9-2	103.8	4983477.1	374851.3
9-3	103.6	4983484.4	374851.1
9-4	102.9	4983499.0	374880.4
9-5	101.7	4983516.7	374918.2
9-6	101.6	4983524.5	374917.6
9-7	102.2	4983544.8	374955.9
9-8	103.1	4983499.8	374848.7
9-9	101.3	4983530.0	374879.5
9-10	100.4	4983557.5	374910.9
9-11	100.3	4983594.3	374950.7

NOTE

The boundaries between soil strata have been established only at Bore Hole locations. Between Bore Holes the boundaries are assumed from geological evidence.

NOTE: The complete foundation investigation and design report for this project and other related documents may be examined at the Engineering Materials Office, Downsview. Information contained in this report and related documents is specifically excluded in accordance with the conditions of Section GC 2.01 of OPS Gen. Cond.

REV	DATE	BY	DESCRIPTION
1			
Geocres No 318-65			
HWY No 416			DIST 9
SUBARD NK [CHECKED NK] DATE 1991 10 23			SITE 16-316
DRAWN MZ [CHECKED RB] APPROVED			DWG 2

REF No E-53-416-3; 1991 05 29