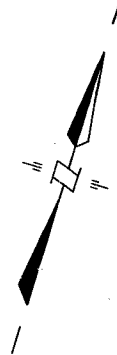


W.O. 57-F-32A

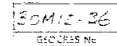
HWY. 401

TWP. OF CLARKE

30MIS-36



F 3130
401 F-43
E 3276 - 1
7 - 26



F 3130-1
401 F-50

DEPARTMENT OF HIGHWAYS - ONTARIO MATERIALS & RESEARCH SECTION - DOWNSVIEW		
GRAVEL ROAD PROPOSED CROSSING WEST LIMITS OF NEWCASTLE SHOWING POSITION & ELEVATION OF HOLES		
HWY. NO. 40 CO. DURHAM TWP. CLARKE	W.P. 83 - 57 LOT. 30 & 31	DIV. NO. 7 CON. I
SCALE AS SHOWN DRAWN BY R.E.F.	SUBMITTED BY APPROVED BY	DATE 10 OCT. 1957 DRAWING NO. F-57-32A

DEPARTMENT OF HIGHWAYS - ONTARIO
MATERIALS & RESEARCH BRANCH - FOUNDATIONS SECTION - DOWNSVIEW
OFFICE REPORT ON SOIL EXPLORATION

30M15-36
GEOCRES No.

DRILL RIG 52-2 OPERATION ROD & PENET V. JOB F-57-J2 WP 83-57 BORING 1 STA 809+85 (426.27)
CASING 2 1/2" (standard samplers to fit unless noted) DATUM GEO DETIC DATE REPORT SEPT. 1967
SAMPLER HAMMER WT. 250 LBS. DROP 22 INCHES COMPILED BY HJ CHECKED BY AL DATE BORING 5 AUG. 1967

ABBREVIATIONS

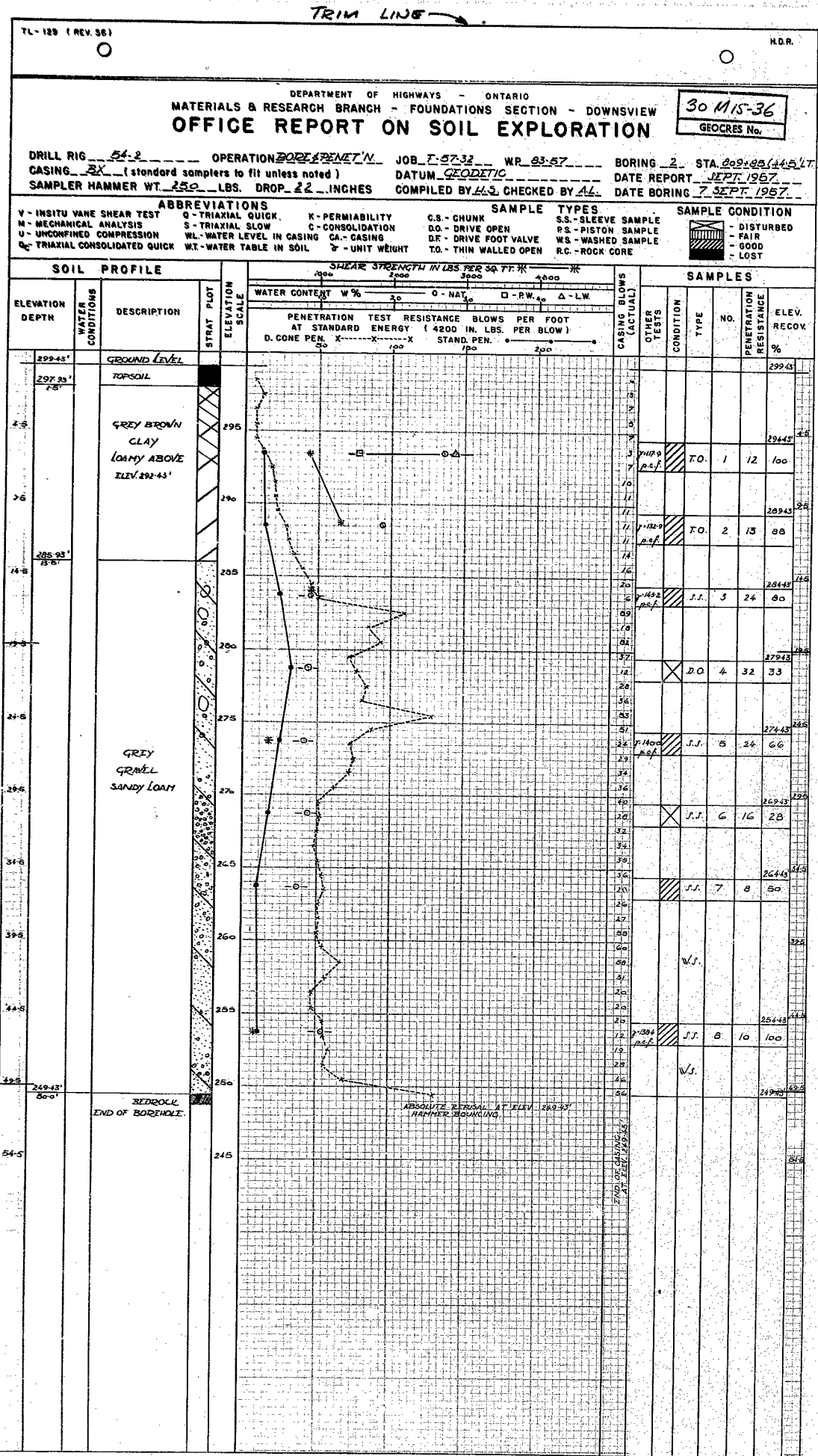
ABBREVIATIONS				SAMPLE TYPES	
V - INSITU VANE SHEAR TEST	Q - TRIAXIAL QUICK	K - PERMIABILITY	C.S. - CHUNK	S.S. - SLEEVE SAMPLE	
M - MECHANICAL ANALYSIS	S - TRIAXIAL SLOW	C - CONSOLIDATION	D.O. - DRIVE OPEN	P.S. - PISTON SAMPLE	
U - UNCONFINED COMPRESSION	WL - WATER LEVEL IN CASING	CA - CASING	D.F. - DRIVE FOOT VALVE	WS - WASHED SAMPLE	
QC - TRIAXIAL CONSOLIDATED QUICK	WT - WATER TABLE IN SOIL	γ - UNIT WEIGHT	T.O. - THIN WALLED OPEN	R.C. - ROCK CORE	

SAMPLE CONDITION

- DISTURBED
- FAIR
- GOOD
- LOST

SOIL PROFILE

[illegible]




DEPARTMENT OF HIGHWAYS - ONTARIO
MATERIALS & RESEARCH BRANCH - FOUNDATIONS SECTION - DOWNSVIEW
OFFICE REPORT ON SOIL EXPLORATION

30 M15-36
GEOCRE No.

DRILL RIG 54-2 OPERATION BORE & PENETIN JOB F-57-32 WP 03-67 BORING 3 STA. 909+54 (16' LT)
CASING 3X (standard samplers to fit unless noted) DATUM GEOIDIC DATE REPORT JEPT 1957
SAMPLER HAMMER WT. 250 LBS. DROP 22 INCHES COMPILED BY AL CHECKED BY AL DATE BORING 10 JEPT 1957

ABBREVIATIONS

ABBREVIATIONS			SAMPLE	TYPES	SAMPLE CONDITION
V - INSITU VANE SHEAR TEST	S - TRIAXIAL QUICK	K - PERMIABILITY	C.S. - CHUNK	S.S. - SLEEVE SAMPLE	 - DISTURBED - FAIR - GOOD - LOST
M - MECHANICAL ANALYSIS	S - TRIAXIAL SLOW	G - CONSOLIDATION	D.D. - DRIVE OPEN	P.S. - PISTON SAMPLE	
U - UNCONFINED COMPRESSION	WL - WATER LEVEL IN CASING	Ca - CASING	D.F. - DRIVE FOOT VALVE	WS - WASHED SAMPLE	
Qc TRIAXIAL CONSOLIDATED QUICK	WT - WATER TABLE IN SOIL	α - UNIT WEIGHT	T. - THIN WALLED OPEN	RC - ROCK CORE	

SOIL PROFILE

[illegible]

TL-129 (REV. 56)

TRIM LINE

H.D.R.

DEPARTMENT OF HIGHWAYS - ONTARIO
MATERIALS & RESEARCH BRANCH - FOUNDATIONS SECTION - DOWNSVIEW

30M15-36
GEOCRE No.

DRILL RIG S-2 OPERATION PENETIN JOB F-97-32 WP 83-57 BORING 4 STA. 809+63(4127)
CASING 3X (standard samplers to fit unless noted) DATUM GEODETIC DATE REPORT SEPT. 1997
SAMPLER HAMMER WT. 150 LBS. DROP 22 INCHES COMPILED BY HL CHECKED BY AL DATE BORING 12 SEPT. 1997

ABBREVIATIONS
V - INSITU VANE SHEAR TEST Q - TRIAXIAL QUICK K - PERMIABILITY C.S. - CHUNK S.S. - SLEEVE SAMPLE
M - MECHANICAL ANALYSIS S - TRIAXIAL SLOW C - CONSOLIDATION D.O. - DRIVE OPEN P.S. - PISTON SAMPLE
U - UNCONFINED COMPRESSION WL - WATER LEVEL IN CASING CA - CASING D.F. - DRIVE FOOT VALVE WS - WASHED SAMPLE
Qc - TRIAXIAL CONSOLIDATED QUICK WT - WATER TABLE IN SOIL G - UNIT WEIGHT T.O. - THIN WALLED OPEN R.C. - ROCK CORE

SAMPLE CONDITION
- DISTURBED
- FAIR
- GOOD
- LOST

SOIL PROFILE

ELEVATION DEPTH	WATER CONDITIONS	DESCRIPTION	STRAT PLOT	ELEVATION SCALE	WATER CONTENT W % O - NAT. □ - P.W. △ - L.W. PENETRATION TEST RESISTANCE BLOWS PER FOOT AT STANDARD ENERGY (4200 IN. LBS. PER BLOW) D. CONE PEN. X-----X-----X STAND. PEN. •-----•-----•	CASING BLOWS (ACTUAL)	OTHER TESTS	CONDITION	TYPE	NO.	PENETRATION RESISTANCE %	ELEV. RECOV.
297.69		GROUND LEVEL										
295												
290												
285												
280												
275												
270												
265												
260												
255												
250												
245												

EXPUGAL AT ELEV. 248.99