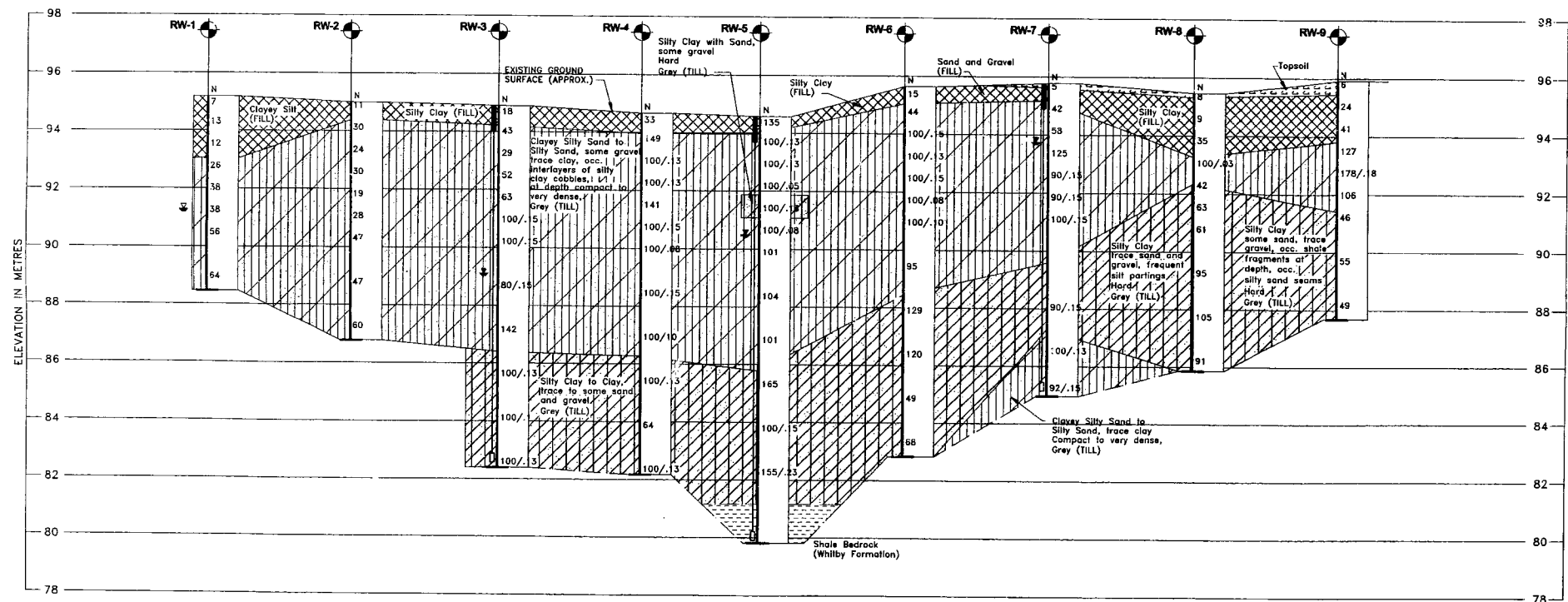
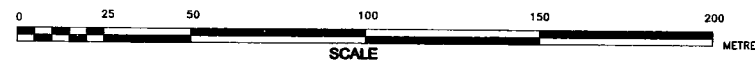


PLAN



SECTION ALONG Q OF RETAINING WALL



METRIC
DIMENSIONS ARE IN METRES
AND/OR MILLIMETRES
UNLESS OTHERWISE SHOWN

DIST 6 HWY 401
CONT. No.
WP No. 242-86-00



HIGHWAY 401 - RAMP AREA
BOREHOLE LOCATIONS & SOIL STRATA

SHEET



Golder Associates Ltd.
MISSISSAUGA, ONTARIO, CANADA



KEY PLAN

LEGEND

- Borehole
- Seal
- Piezometer
- N Standard Penetration Test value
- 16 Blows/0.3m unless otherwise stated (Std. Pen. Test, 475 j/blow)
- 100% Rock Quality Designation (RQD)
- WL in piezometer on Oct. 19, 1999
- WL during drilling

No.	ELEVATION	LOCATION	
		NORTHING	EASTING
G-13	98.32	4857263.0	343953.0
RW-1	95.18	4857069.5	343880.0
RW-2	95.00	4857085.0	343927.5
RW-3	94.90	4857100.0	343976.0
RW-4	94.66	4857115.0	344023.0
RW-5	94.57	4857127.0	344062.0
RW-6	95.64	4857142.0	344109.5
RW-7	95.78	4857157.5	344157.0
RW-8	95.47	4857172.5	344205.0
RW-9	95.92	4857187.5	344252.5
ST-1	96.95	4857159.5	343995.5
ST-2	96.74	4857171.5	344032.5
ST-3	97.22	4857177.0	343984.0
ST-4	97.40	4857188.2	344021.0
ST-5	97.81	4857194.1	343973.0
ST-6	97.54	4857206.0	344010.0

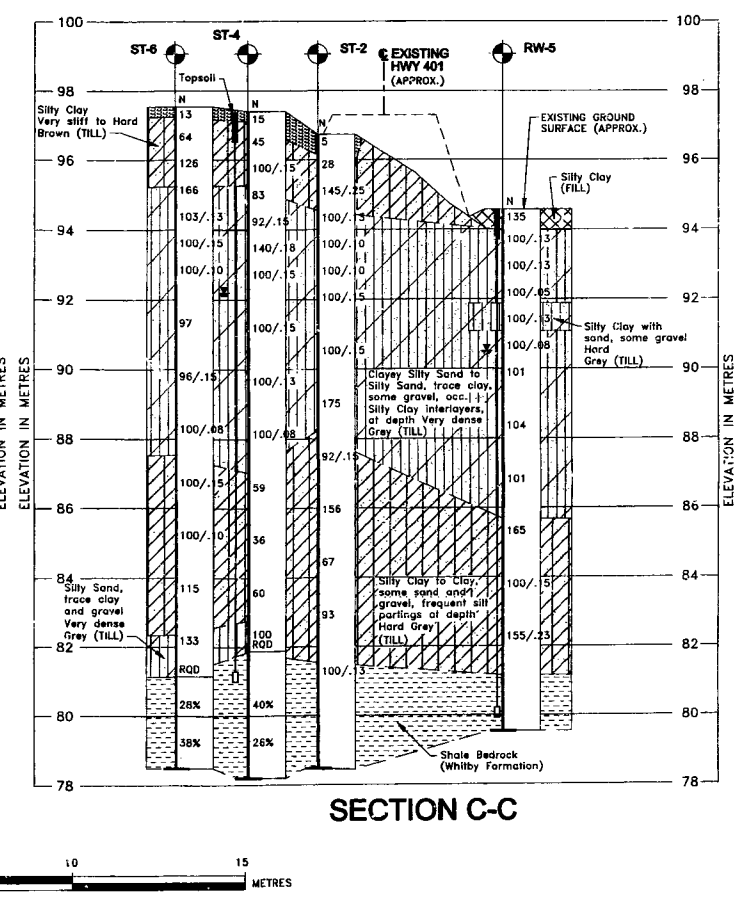
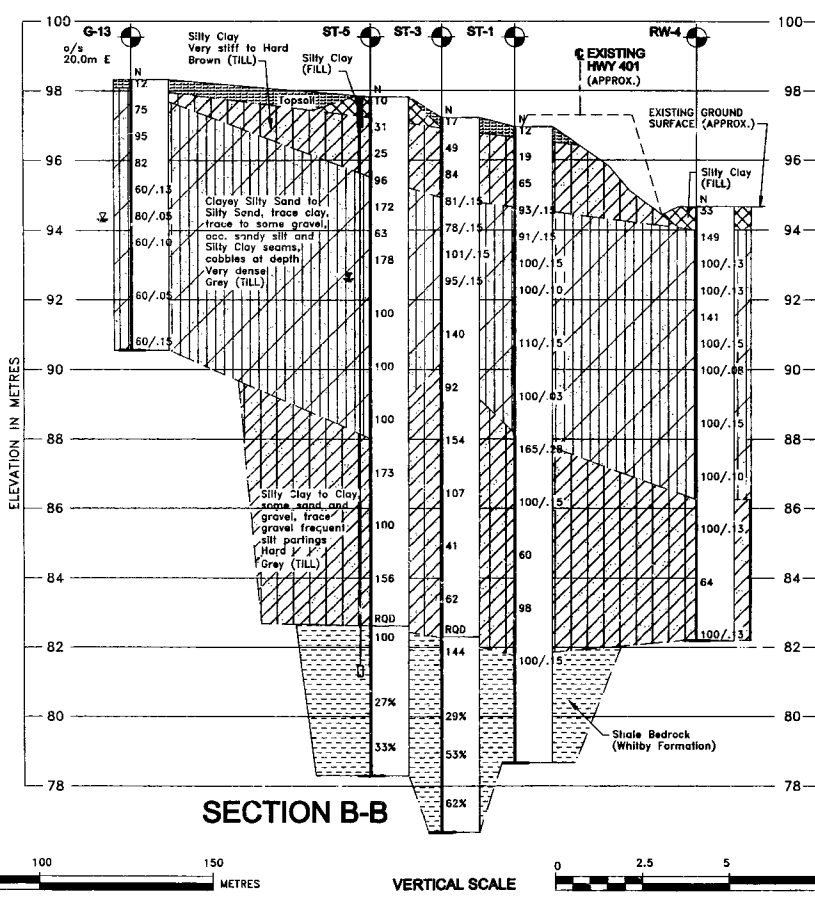
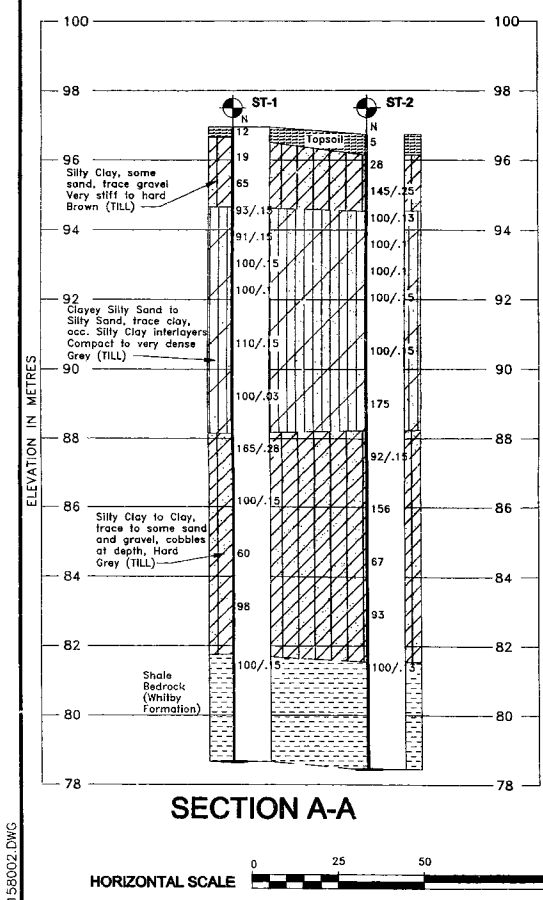
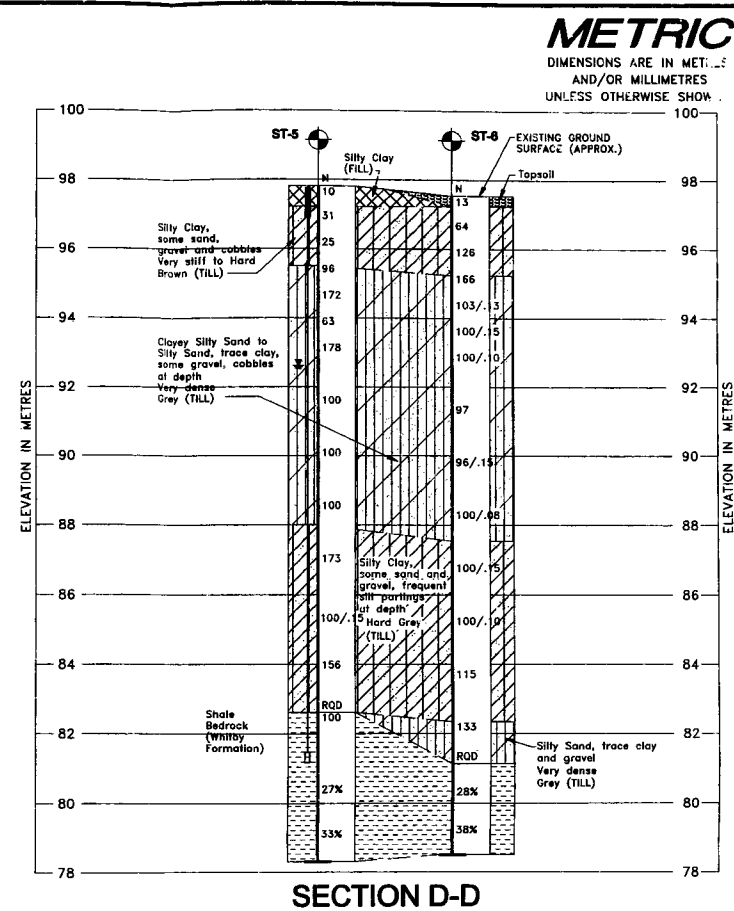
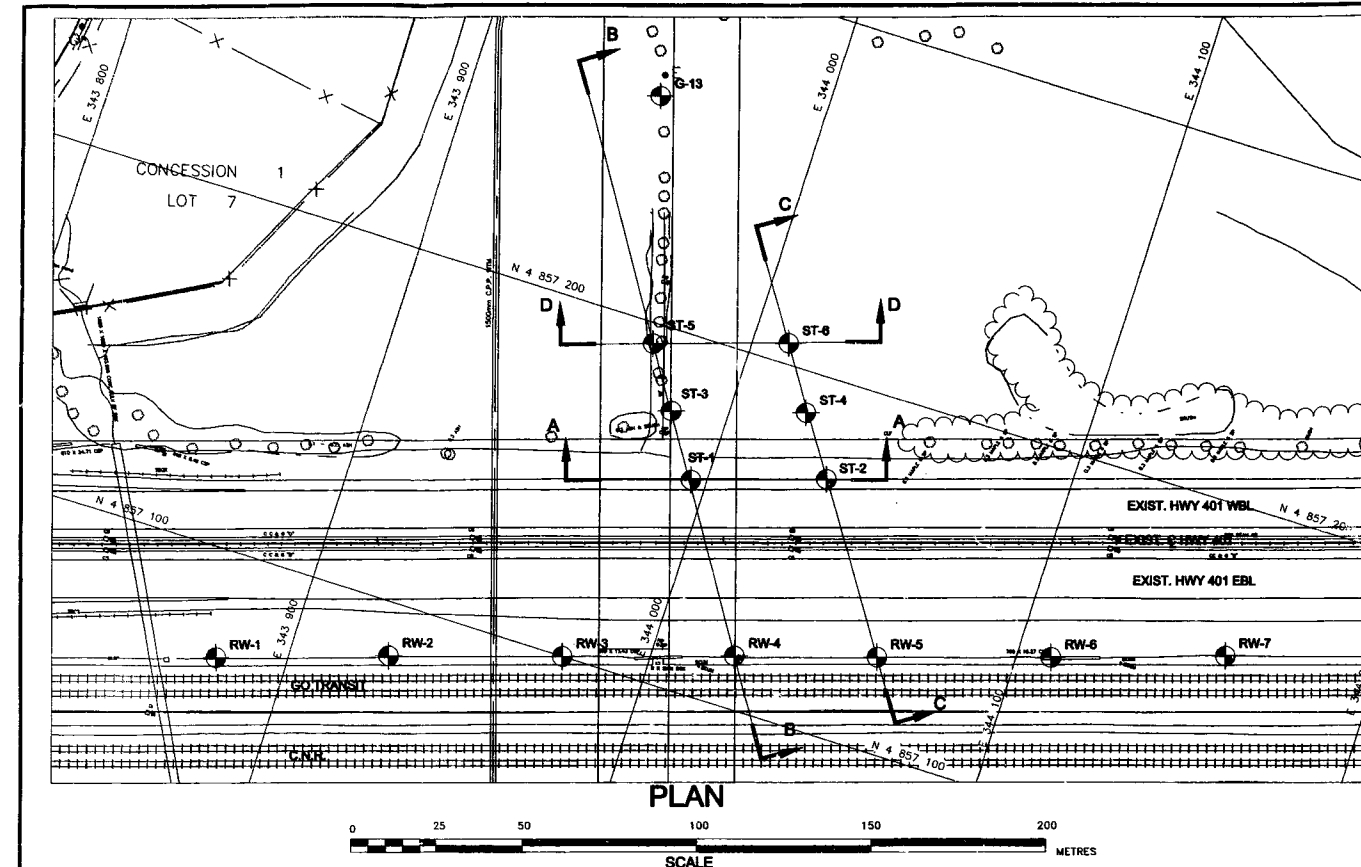
NOTES

The boundaries between soil strata have been established only at Borehole locations. Between Boreholes the boundaries are assumed from geological evidence.

NO.	DATE	BY	REVISION

Geocres No.

HWY. No. 401	PROJECT NO.: 991-1158	DIST. 6
SUBM'D. AMP	CHKD: DATE: 1999 10 07	
DRAWN: JFC	CHKD. AMP	APPD. DWG. 1



DIST 6 HWY 401
CONT. No.
WP No. 242-86-00

HIGHWAY 401
CARRUTHERS CR. DRIVE OVERPASS
BOREHOLE LOCATIONS & SOIL STRATA

Golder Associates
Golder Associates Ltd.
 MISSISSAUGA, ONTARIO, CANADA



KEY PLAN

- LEGEND**
- Borehole
 - Seal
 - Piezometer
 - N Standard Penetration Test value
 - 16 Blows/0.3m unless otherwise stated (Std. Pen. Test, 475 j/blow)
 - 100% Rock Quality Designation (RQD)
 - WL in piezometer on Oct. 19, 1999
 - WL during drilling

No.	ELEVATION	NORTHING	EASTING
G-13	98.32	4857263.0	343953.0
RW-4	94.66	4857115.0	344023.0
RW-5	94.57	4857127.0	344062.0
ST-1	96.95	4857159.5	343995.5
ST-2	96.74	4857171.5	344032.5
ST-3	97.22	4857177.0	343984.0
ST-4	97.40	4857138.2	344021.0
ST-5	97.81	4857194.1	343973.0
ST-6	97.54	4857206.0	344010.0

NOTES
 The boundaries between soil strata have been established only at Borehole locations. Between Boreholes the boundaries are assumed from geological evidence.

NO.	DATE	BY	REVISION

Geocres No.	
HWY. No. 401	PROJECT NO.: 991-1158
SUBM'D. AMP	CHKD: DATE: 1999 10 07
DRAWN: JFC	CHKD. AMP APPD. DWG. 2

1" = 1" imp.

01158002.DWG