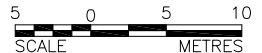
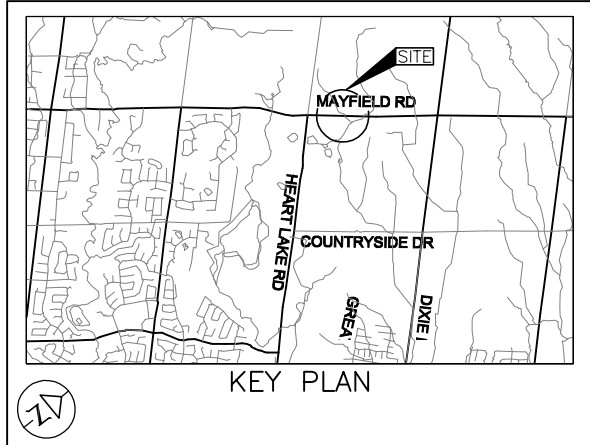


PROFILE ALONG EASTBOUND SHOULDER OF MAYFIELD ROAD



**METRIC**  
DIMENSIONS ARE IN METRES AND/OR  
MILLIMETRES UNLESS OTHERWISE SHOWN



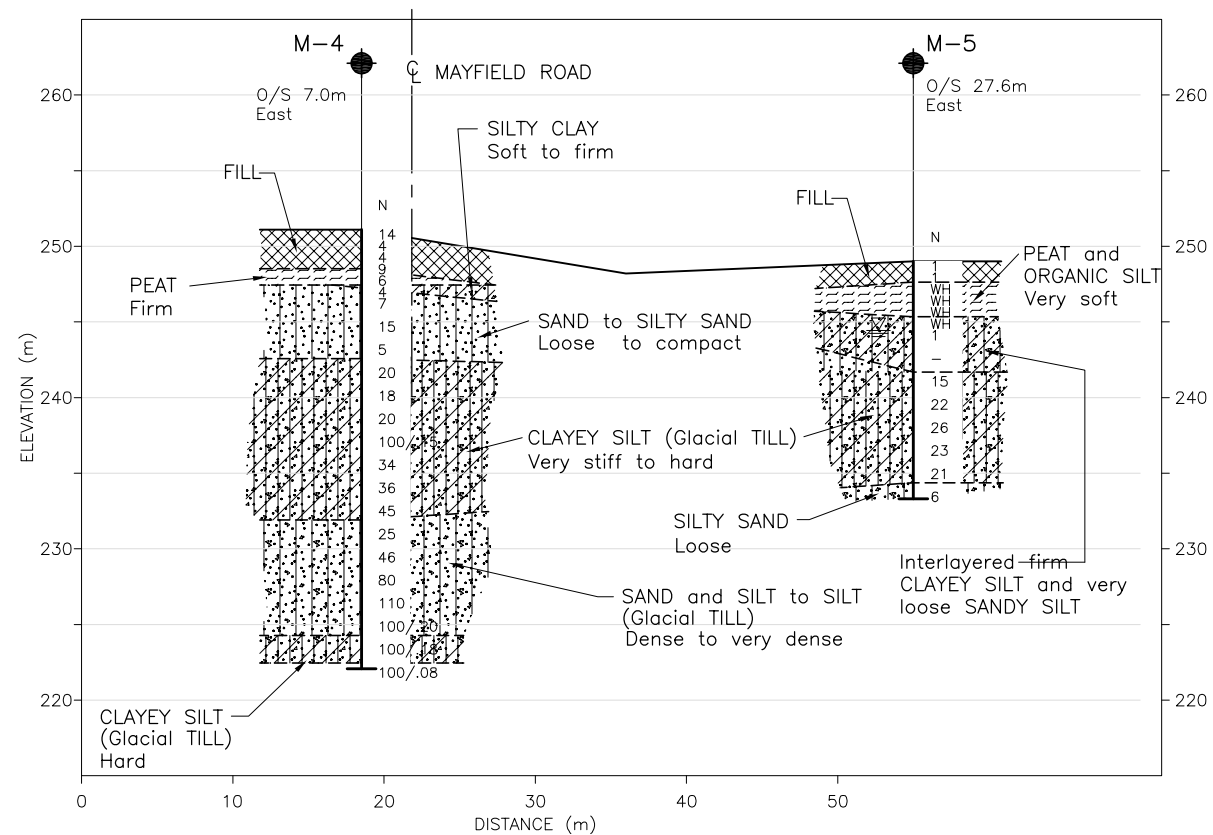
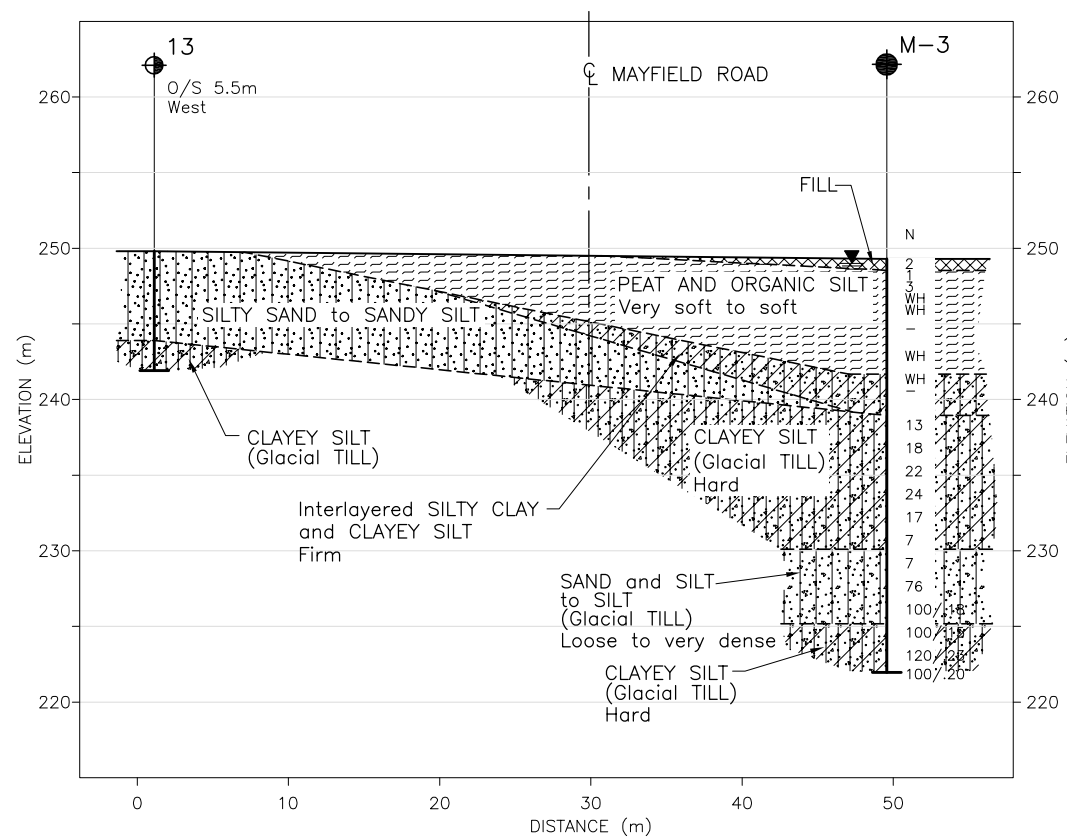
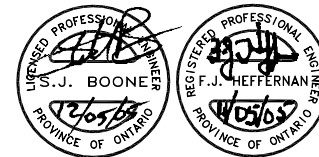
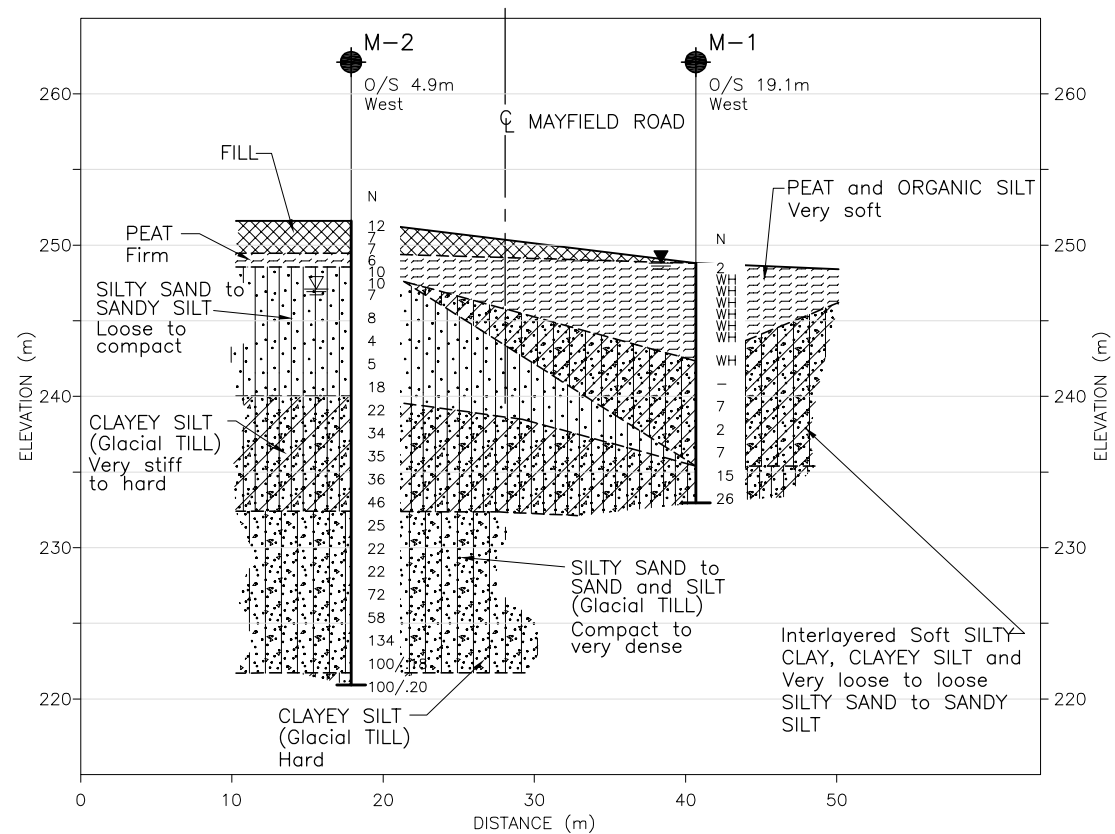
- LEGEND**
- Borehole - Current Investigation
  - Borehole - Previous Investigation
  - Seal
  - Piezometer
  - N Standard Penetration Test Value
  - 16 Blows/0.3m unless otherwise stated (Std. Pen. Test, 475 j/blow)
  - 100% Rock Quality Designation (RQD)
  - WL in piezometer, measured on Dec. 11, 2003
  - WL during drilling

No.	ELEVATION	CO-ORDINATES	
		NORTHING	EASTING
M-1	248.8	4846298.0	280719.0
7	249.8	4846308.0	280731.0
M-2	251.6	4846317.0	280700.0
14	251.0	4846326.0	280685.0
8	248.3	4846328.0	280753.0
C-M4-1-2	249.8	4846328.3	280738.0
M-3	249.3	4846343.1	280753.6
13	249.8	4846348.0	280705.0
C-M4-1-1	249.5	4846354.8	280760.5
9	248.2	4846356.0	280769.0
M-4	251.1	4846386.0	280758.0
M-5	249.0	4846397.0	280798.0

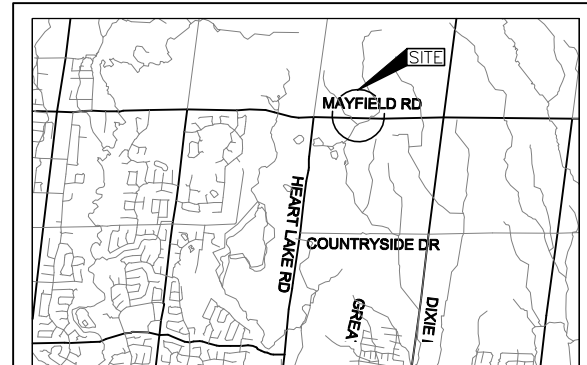
- The boundaries between soil strata have been established only at borehole locations. Between Boreholes the boundaries are assumed from geological evidence.
- The complete foundation investigation and design report for this project and other related documents may be examined at the Materials Engineering and Research Office, Downsview. Information contained in this report and related documents are specifically excluded in accordance with the conditions of Section GC 2.01 of OPS Gen. Cond.

**REFERENCE**  
Base plans provided in digital format by URS CANADA INC.

NO.	DATE	BY	REVISION
Geocres No.			
HWY. 410		PROJECT NO. 001-1159	DIST.
SUBM'D.	CHKD.	DATE: MAY 2005	SITE:
DRAWN: JDR	CHKD.	APPD.	DWG. MFR-2A

CONT No. 2006-2018  
WP No. 101-00-00HIGHWAY 410 UNDERPASS  
MAYFIELD ROAD INTERCHANGE  
SOIL STRATASHEET  
375Golder Associates Ltd.  
MISSISSAUGA, ONTARIO, CANADA

METRIC

DIMENSIONS ARE IN METRES AND/OR  
MILLIMETRES UNLESS OTHERWISE SHOWN

KEY PLAN

## LEGEND

- Borehole - Current Investigation
- Borehole - Previous Investigation
- Seal
- Piezometer
- N Standard Penetration Test Value
- 16 Blows/0.3m unless otherwise stated (Std. Pen. Test, 475 j/blow)
- 100% Rock Quality Designation (RQD)
- WL in piezometer, measured on Dec. 11, 2003
- WL during drilling

No.	ELEVATION	CO-ORDINATES	
		NORTHING	EASTING
M-1	248.8	4846298.0	280719.0
7	249.8	4846308.0	280731.0
M-2	251.6	4846317.0	280700.0
14	251.0	4846326.0	280685.0
8	248.3	4846328.0	280753.0
C-M4-1-2	249.8	4846328.3	280738.0
M-3	249.3	4846343.1	280753.6
13	249.8	4846348.0	280705.0
C-M4-1-1	249.5	4846354.8	280760.5
9	248.2	4846356.0	280769.0
M-4	251.1	4846386.0	280758.0
M-5	249.0	4846397.0	280798.0

## NOTES

- The boundaries between soil strata have been established only at borehole locations. Between Boreholes the boundaries are assumed from geological evidence.
- The complete foundation investigation and design report for this project and other related documents may be examined at the Materials Engineering and Research Office, Downsview. Information contained in this report and related documents are specifically excluded in accordance with the conditions of Section GC 2.01 of OPS Gen. Cond.

## REFERENCE

Base plans provided in digital format by URS CANADA INC.

NO.	DATE	BY	REVISION

Geocres No.		PROJECT NO. 001-1159		DIST.
HWY. 410		DATE: MAY 2005		SITE:
SUBM'D.		CHKD.		APPD.
DRAWN: JDR		CHKD.		DWG. MFR-2B