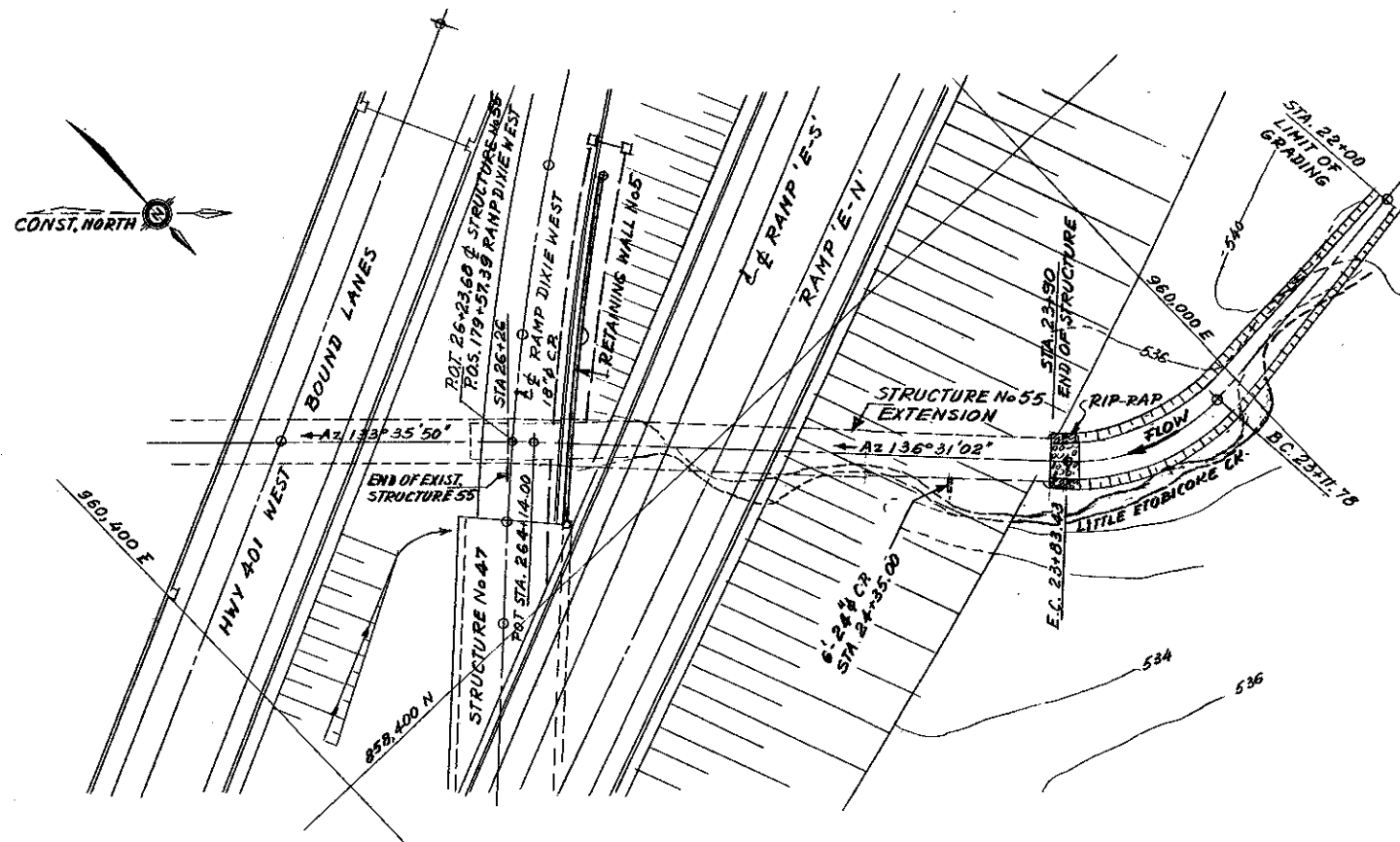
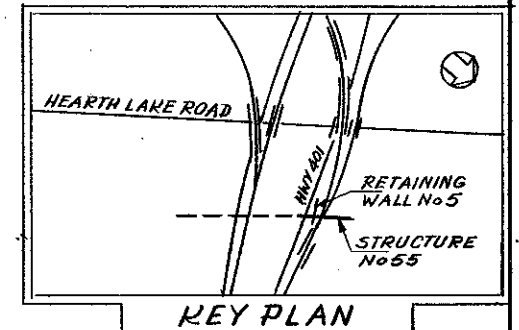


DIST. No 6
CONT No 76-120
WP No 127-66-51

STRUCTURE No 55 EXTENSION
AND RETAINING WALL No 5
GENERAL LAYOUT

SHEET
152

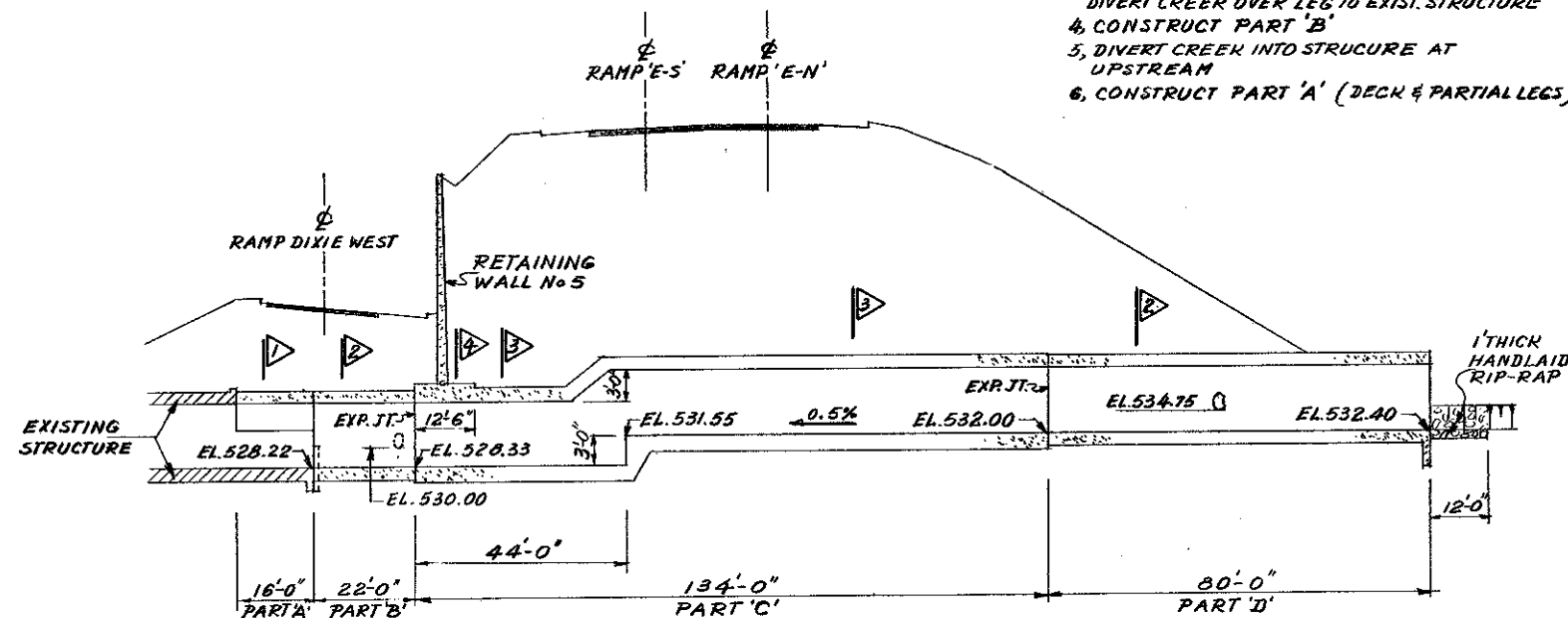


PLAN

SCALE: 1" = 40'-0"

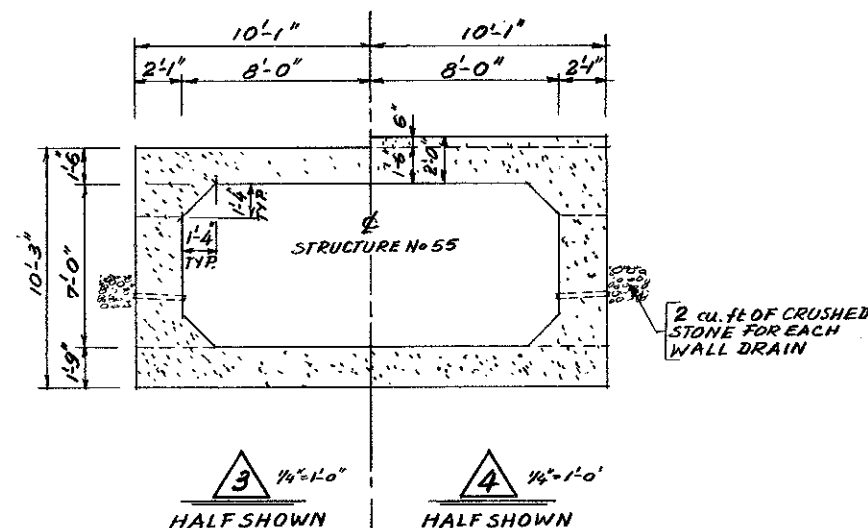
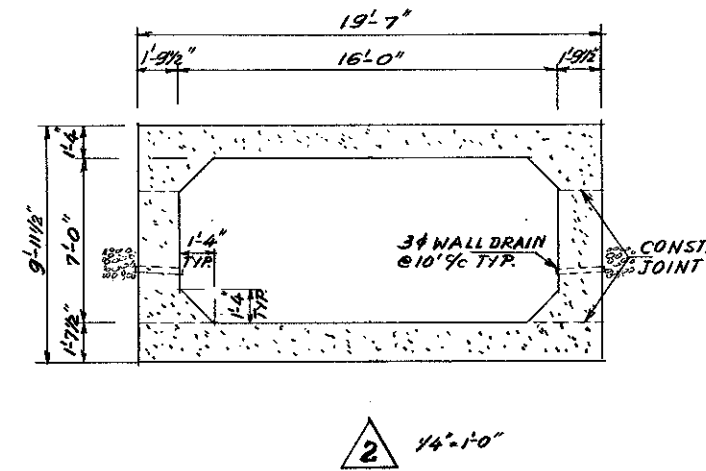
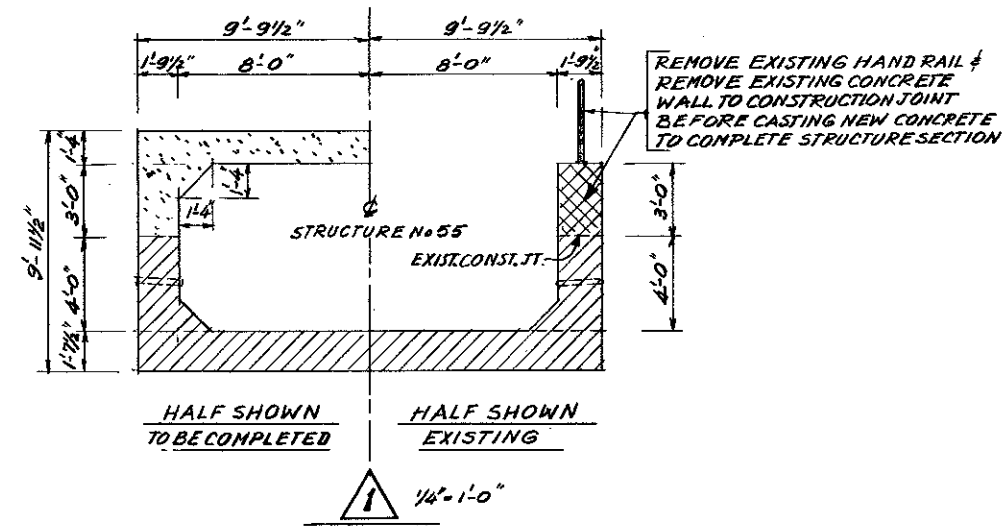
SEQUENCE OF CONSTRUCTION

1. DIVERT CREEK TO CLEAR FOR CONSTRUCTION FOR PART 'C' & 'D'
2. CONSTRUCT PART 'C' & 'D'
3. REMOVE LEGS OF PART 'A' SEE 1 AND DIVERT CREEK OVER LEG TO EXIST. STRUCTURE
4. CONSTRUCT PART 'B'
5. DIVERT CREEK INTO STRUCTURE AT UPSTREAM
6. CONSTRUCT PART 'A' (DECK & PARTIAL LEGS)



SECTION ALONG STRUCTURE No 55

SCALE: HORIZ. 1" = 20'-0"
VERT. 1" = 10'-0"



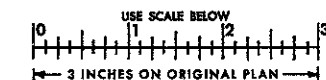
GENERAL NOTES

- CLASS OF CONCRETE 3000 psi
- CLEAR COVER TO REINFORCING STEEL 3" EXCEPT AS NOTED
- ALL EXPOSED CORNERS TO BE CHAMFERED 3/4"
- NO CONCRETE SHALL BE PLACED IN BOTTOM SLABS, UNTIL THE DEPTH OF THE EXCAVATION AND CHARACTER OF THE FOUNDATION MATERIAL HAVE BEEN APPROVED BY THE ENGINEER
- FILL SHALL BE PLACED AT BOTH SIDES OF STRUCTURE SIMULTANEOUSLY, APPLY ALSO TO THE RETAINING WALL UNTIL THE HEIGHT OF FILL REACHES THE GRADING HEIGHT OF RAMP DIXIE WEST
- STRUCTURE AND RETAINING WALL SHALL BE BUILT IN ACCORDANCE WITH MTC FORM 9
- REINFORCING STEEL SHALL BE HARD GRADE (G 50)
- WALL DRAIN OPENINGS TO BE FORMED USING NON-METALIC MATERIAL VERTICAL LOCATION OF WALL DRAINS SHALL BE DETERMINED IN FIELD BY THE ENGINEER
- FOR RETAINING WALL BACKFILL SEE SD-4-58
- FOR STRUCTURE BACKFILL SEE DWG. 24-277-13

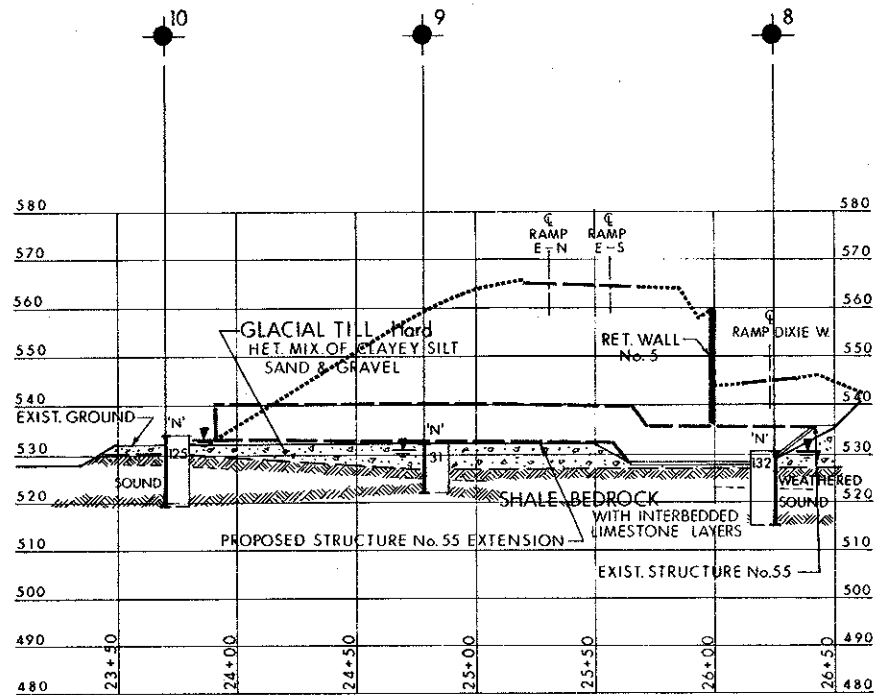
LIST OF DRAWINGS

- 24-277-10 GENERAL LAYOUT
- 24-277-11 BOREHOLE LOCATIONS & SOIL STRATA
- 24-277-12 GEOMETRIC DETAIL
- 24-277-13 DETAIL OF PART 'A', 'B' & 'C'
- 24-277-14 DETAILS OF PART 'D', JOINTS & BACKFILL
- 24-277-15 RETAINING WALL No 55 DETAILS
- 24-277-16 STANDARD DETAILS I
- 17 ELECTRICAL EMBEDDED WORK
- 18 ELECTRICAL CONSTRUCTION STANDARDS

FOR REDUCED PLAN

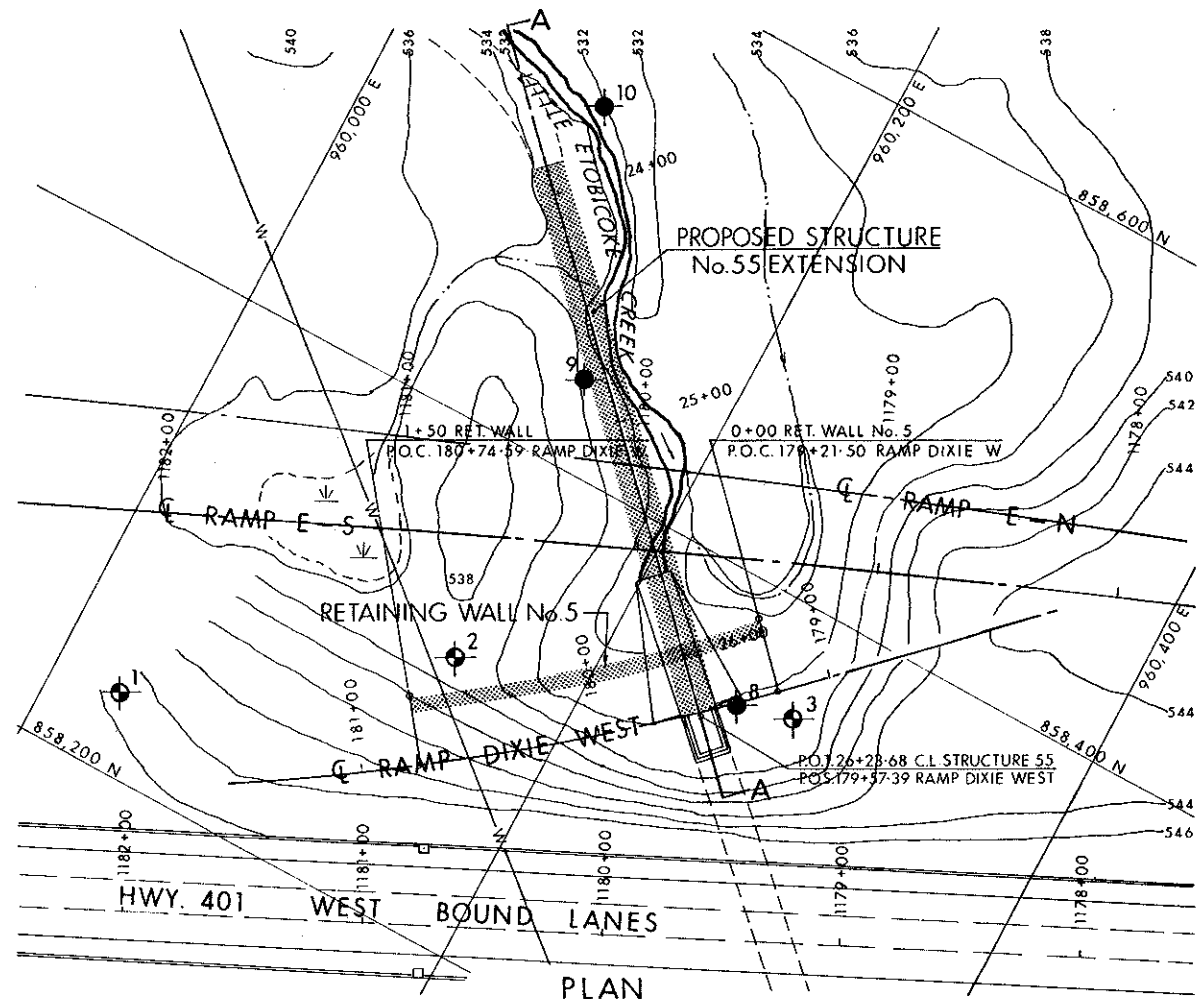


REVISIONS	DATE	BY	DESCRIPTION
1			
2			
3			



SECTION A-A

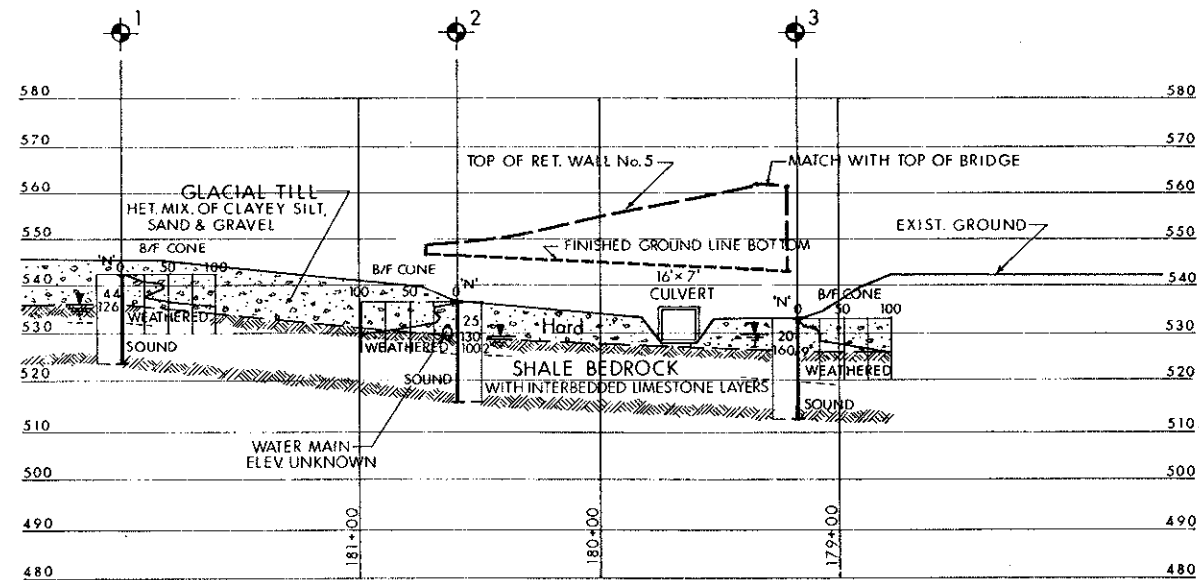
SCALE
HOR. 40 20 0 20 FT.
VERT. 20 10 0 20



PLAN

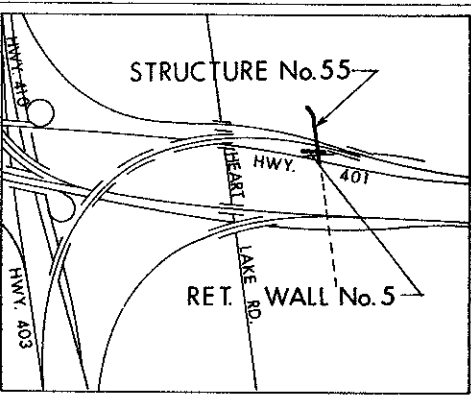
SCALE
40 20 0 40 FT.

NOTE
GROUND CONDITIONS
AS OF MAY 1976



PROFILE

SCALE
HOR. 40 20 0 40 FT.
VERT. 20 10 0 20



KEY PLAN

LEGEND

- Bore Hole
- Dynamic Cone Penetration Test (Cone)
- Bore Hole & Cone
- 'N' Blows/ft (Std Pen Test 350ft lbs energy)
- CONE Blows/ft (60° Cone, 350ft lbs energy)
- WL at time of investigation
B.H. No. 1, 2 & 3 JULY 1973
B.H. No. 8, 9 & 10 APRIL 1973

No	ELEVATION	CO-ORDINATES	
		NORTH	EAST
1	542.8	858,232	960,030
2	536.7	858,310	960,146
3	533.1	858,355	960,283
8	530.6	858,350	960,259
9	532.4	858,438	960,139
10	534.4	858,542	960,092

NOTE
The complete foundation investigation file for this project may be examined at the Geotechnical Office, Downsview. Information contained in this file and any supplementary files is specifically excluded in accordance with the conditions of Section 102-2 of Form 100.

-NOTE-

The boundaries between soil strata have been established only at Bore Hole locations. Between Bore Holes the boundaries are assumed from geological evidence.

REVISIONS	DATE	BY	DESCRIPTION