

G.I.-30 SEPT. 1976

GEOCRES No. 30M5-198DIST. 4 REGION _____

W.P. No. _____

CONT. No. _____

W. O. No. 93-11031

STR. SITE No. _____

HWY. No. 5&6LOCATION Hwy 5&6 - 675mm Sanitary
SewerNo. of PAGES -

=====

OVERSIZE DRAWINGS TO BE INCLUDED WITH THIS REPORT. _____

REMARKS: _____



PLEASE TYPE

DATE 93 05 21

PAGE 1 OF 1

TO: ART JAARSMA PROJECT TECHNICAL COORDINATOR DISTRICT #4 FAX (416) 637-4114	FROM: P. PAYER FOUNDATION DESIGN SECTION DOWNSIDE FAX (416) 235-5240
SUBJECT: SANITARY SEWER HWY. #6, CHAPPELSON CORNER CONT. 93-15	
<p>THE BLASTING OPERATIONS SHOULD BE CARRIED OUT IN ACCORDANCE WITH THE VIBRATION STUDY REPORT ISSUED BY O2A INSPECTIONS LTD.</p> <p>WE DO NOT HAVE ANY OBJECTION TO APPROVE THE PROPOSALS BY THE DISTRICT.</p> <p>HOWEVER, THE CONTRACTOR SHALL INDEMNIFY AND SAVE HARMLESS THE MINISTRY OF TRANSPORTATION FROM AND AGAINST ALL CLAIMS AND DEMANDS ARISING FROM THE BLASTING OPERATION</p> <p style="text-align: right;">P. Payer SENIOR FOUNDATION ENG.</p>	

1-18-92 FRI 16:22

MOUNTAINVIEW

FAX NO. 14166437559

P. 06

MOUNTAINVIEW GEOTECHNICAL LTD.

Auger Sample

SPT (6) Value

Dynamic Cone Test

Shelby T. Be

Field Vane Test

Lab Vane Test



Natural Moisture



Plastic and Liquid Limit



Undrained Triaxial or
Overburden Pressure
% Strain at Failure



Penetrometer



Project Proposed Sewer



Hwy. 5 & Hwy 6



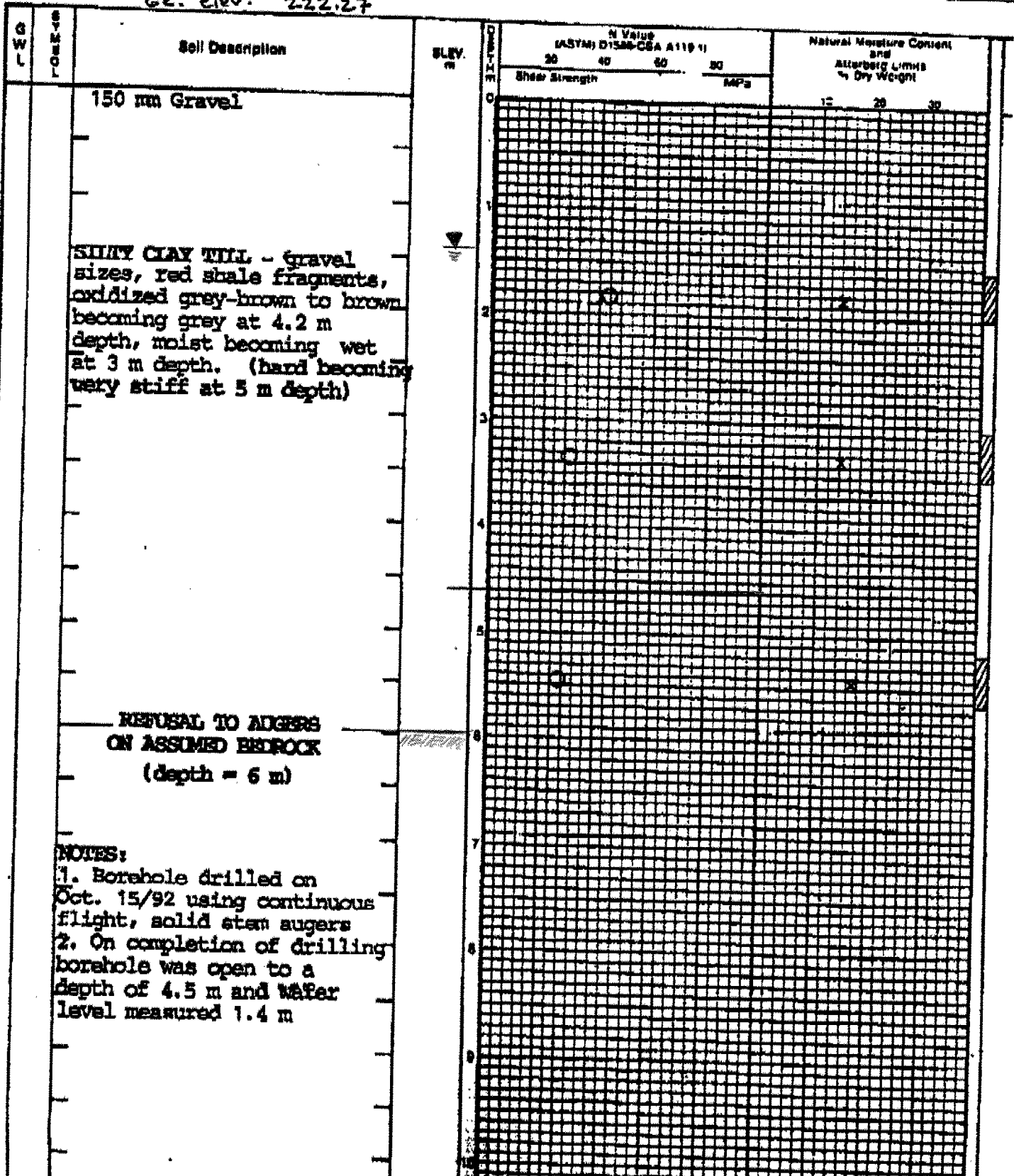
Region of Hamilton-Wentworth

Dwg. No. 3

Borehole No 2

Project No S0329

GE. elev. 222.27

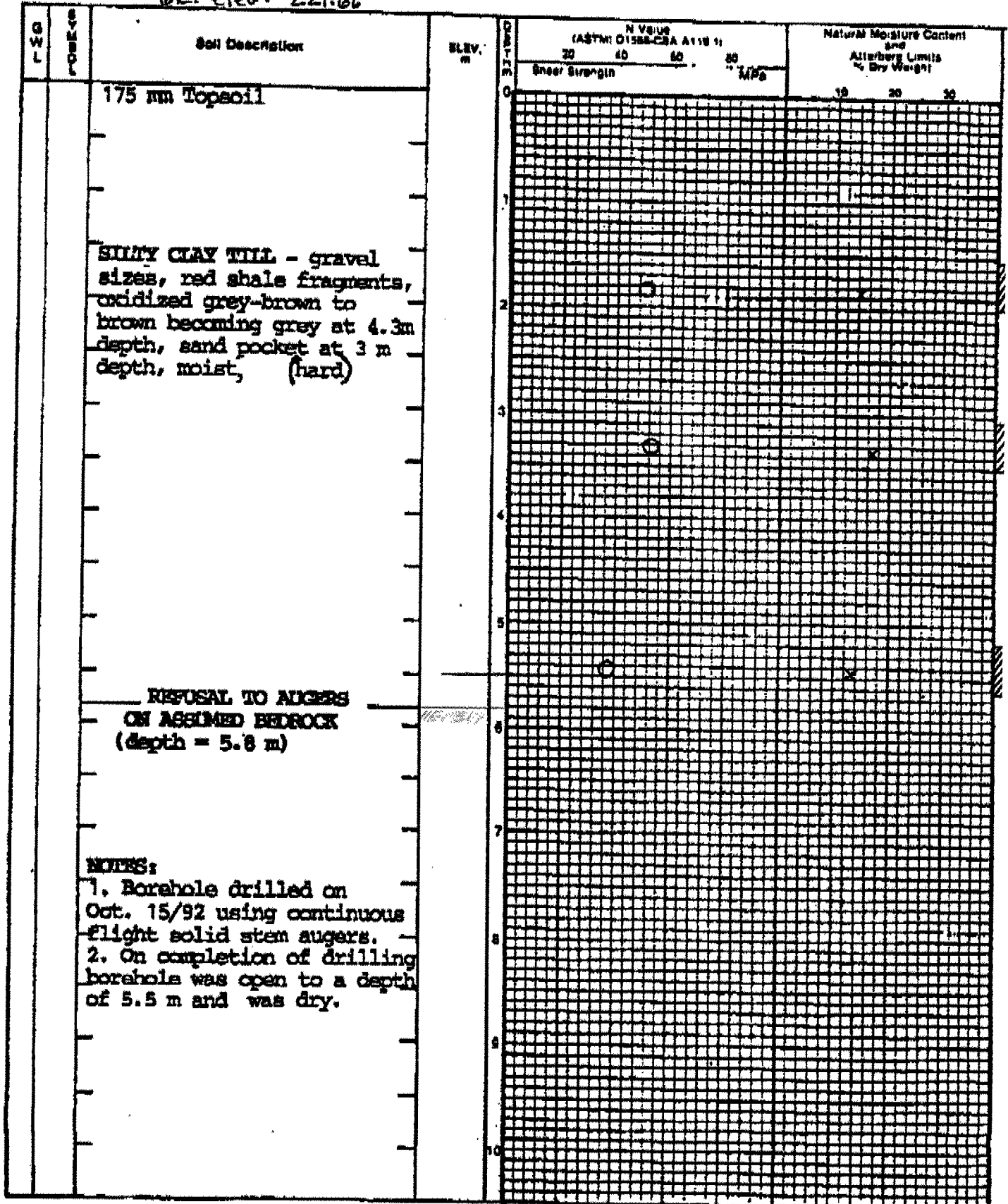


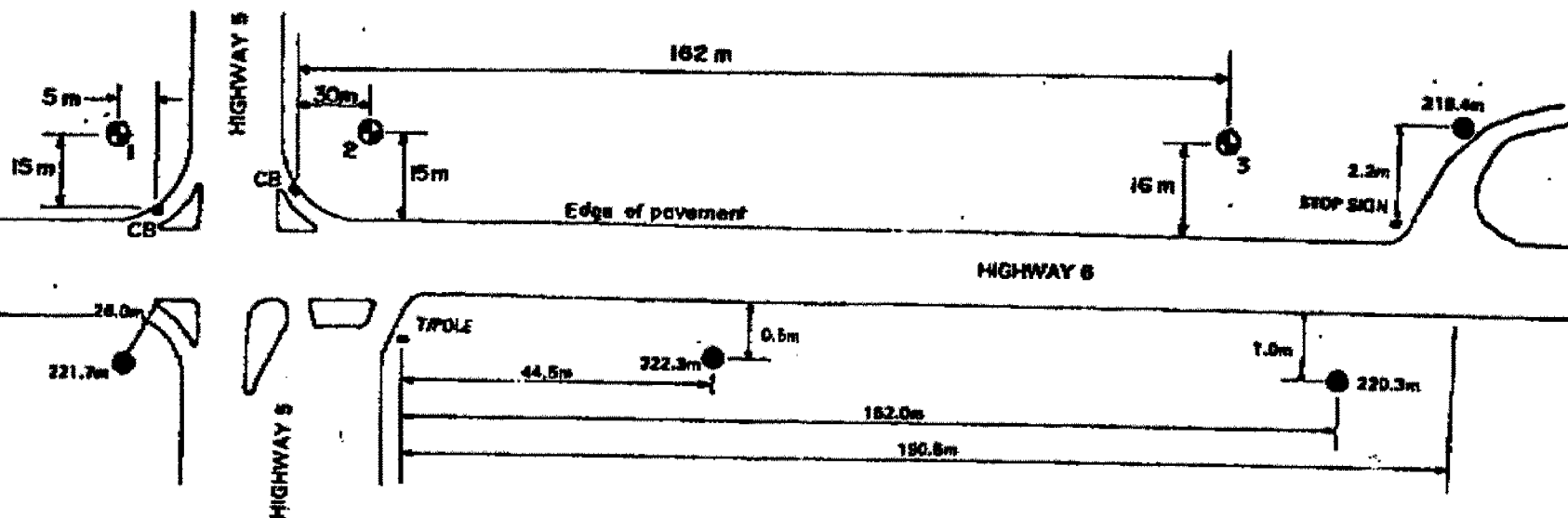
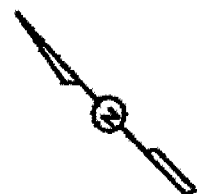
MOUNTAINVIEW GEOTECHNICAL LTD.

Auger Sample ☒ Natural Moisture
SPT/N Value ☐ Plastic and Liquid Limit
Dynamic Cone Test ☐ Undrained Triaxial at
 Shelby Tube ☐ Overburden Pressure
Field Vane Test ☐ % Strain at Failure
Lab Vane Test ☐ Penetration

Project Proposed Sewer Dwg. No. 4
Hwy. 5 & Hwy 6 Borehole No 3
Region of Hamilton-Wentworth Project No. 80329

62. elev. 221.66



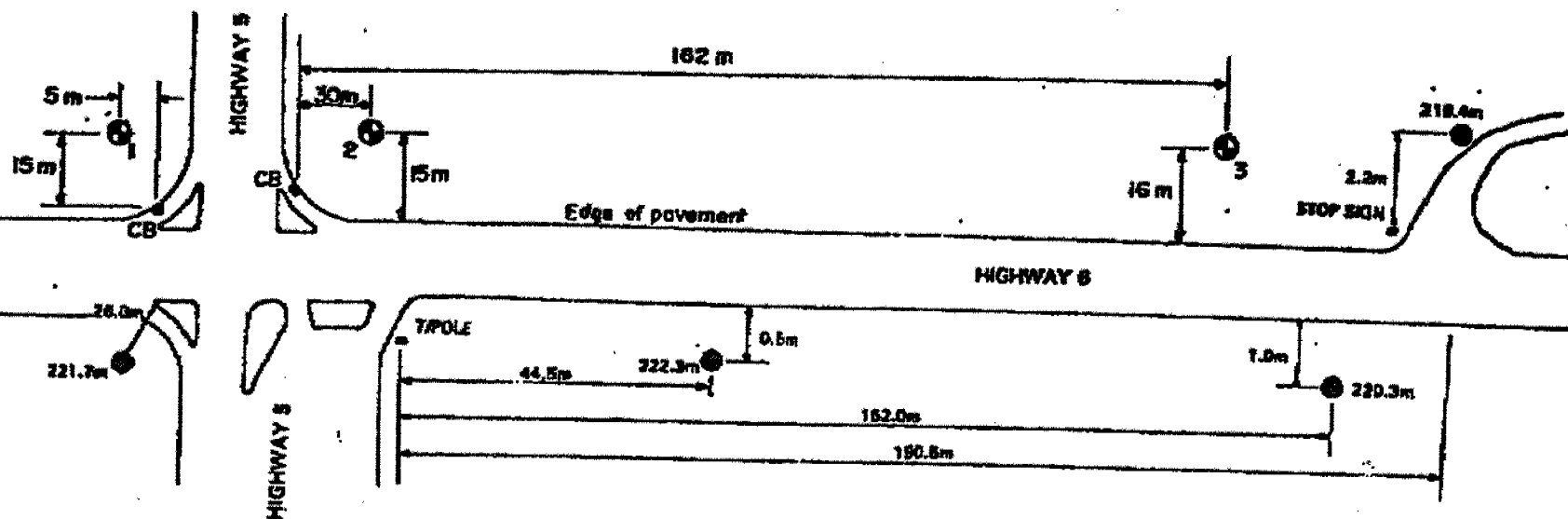
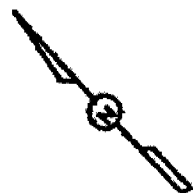


NOTE: 1) BOREHOLE LOCATIONS DETERMINED BY MOUNTAINVIEW GEOTECHNICAL LTD.
2) ELEVATIONS OF BOREHOLES PROVIDED BY THE REGIONAL MUNICIPALITY OF HAMILTON WENTWORTH ENGINEERING DEPARTMENT.

LEGEND

- BOREHOLE LOCATION (drilled on April 28, 1992, by Mountainview Geo. Ltd.)
- ⊙ BOREHOLES DRILLED ON OCTOBER 15, 1992.

MOUNTAINVIEW GEOTECHNICAL LTD. CONSULTING ENGINEERS	
DATE: OCT. 16, 1992	DRAWN BY: SVF, RDC
SCALE: NTS	
PROJECT NAME: GEOTECHNICAL INVESTIGATION HIGHWAY 5 AT HIGHWAY 8 FLAMBOROUGH	
DRAWING TITLE: BOREHOLE LOCATION PLAN	
PROJECT NO.: S0329	DRAWING NO.: 1



- NOTE:
- 1 BOREHOLE LOCATIONS DETERMINED BY MOUNTAINVIEW GEOTECHNICAL LTD.
 - 2 ELEVATIONS OF BOREHOLES PROVIDED BY THE REGIONAL MUNICIPALITY OF HAMILTON WENTWORTH ENGINEERING DEPARTMENT.

LEGEND

- BOREHOLE LOCATION (drilled on April 28, 1992, by Mountainview Geo. Ltd.)
- ① BOREHOLES DRILLED ON OCTOBER 15, 1992.

MOUNTAINVIEW GEOTECHNICAL LTD. CONSULTING ENGINEERS	
DATE: OCT. 16, 1992	DESIGNED BY: SVP, ROC
SCALE: NTS	
PROJECT NAME: GEOTECHNICAL INVESTIGATION HIGHWAY 5 AT HIGHWAY 8 FLAMBOROUGH	
DRAWING TITLE: BOREHOLE LOCATION PLAN	
PROJECT NO.: S0325	DRAWING NO.: 1

PROP 62m. - 675mm. DIA. SAN. SEW. @ 0-20%

PROP. 64m. - 675mm. DIA. SAN. SEW. @ 0-20%

71.88m
EXIST 200m.m.Ø
WATER SERVICE

BOREHOLE #1

PROP MH 6

FUT 450mm DIA
@ 0-20%

EX. 530mm Ø
M. SEW.

EX. 460mm Ø STM. SEW.

EX. 460mm Ø STM. SEW.

EX. 600mm Ø STM. SEW.

EX. 600mm Ø STM. SEW.

17.75
FUT. PAV.
INCL. PAVED
SHOULDER

BOREHOLE #3 DITCH

H.P.

120°

SOD

PROP. MH 5

EX 900mm Ø
500m

CAUTION
SIGN
CB

HWY SIGN
RAMP
SPEED

ALUM.
SIGNAL
POLE
81.5

YIELD SIGN

TRAFFIC
CONTROL

NO PARKING
SIGN

ETC. BASE &
SIGN.

A

EX. BLDG

AC

SOD

CONCRETE
WELL.

THE REGION IS IN THE PROCESS OF
NEGOTIATING AN EASEMENT FOR THE
PROPOSED SANITARY SEWER.

PROPOSED 300.M OF TEMPORARY
SNOW FENCE (DURING CONSTRUCTION)

CROSS
SECTIONS

DO
R
TION

