

DOCUMENT MICROFILMING IDENTIFICATION

G.I.-30 SEPT. 1976

GEOCRES No. 30M3-164 A/B

DIST. 4 REGION

W.P. No. 46-74-28/29

CONT. No. 81-72

W. O. No.

STR. SITE No. 19-246 A/B

HWY. No. 406

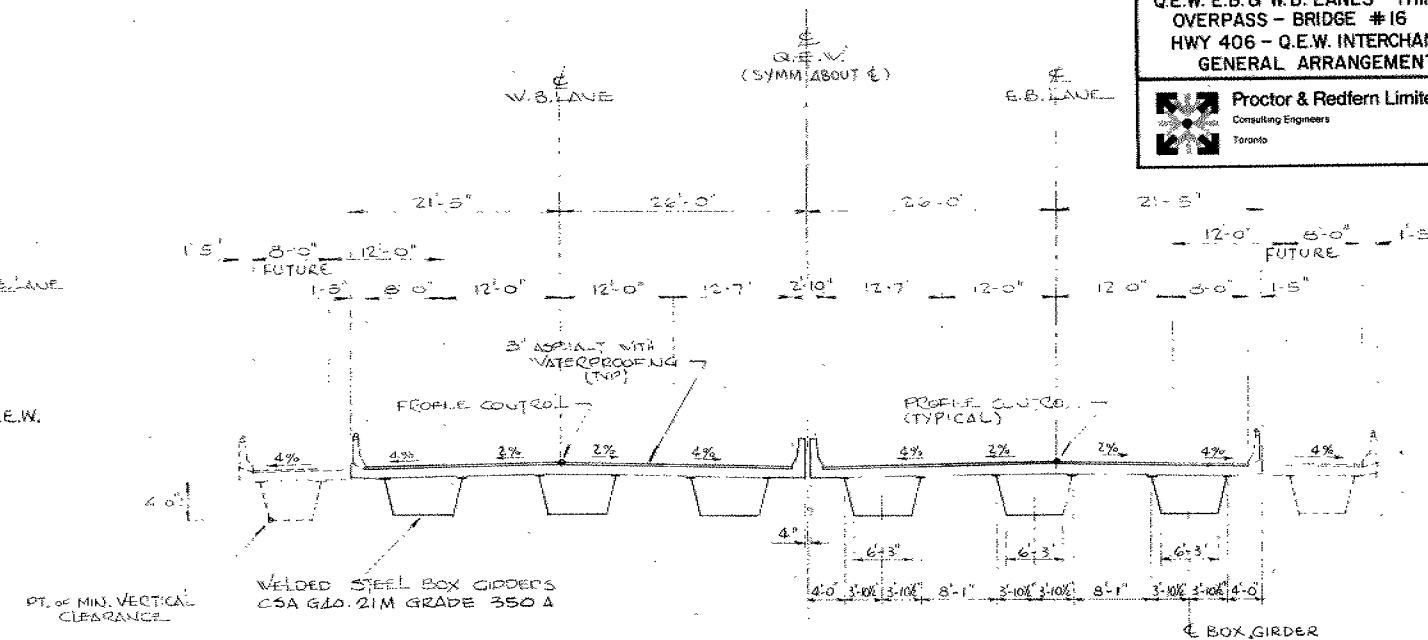
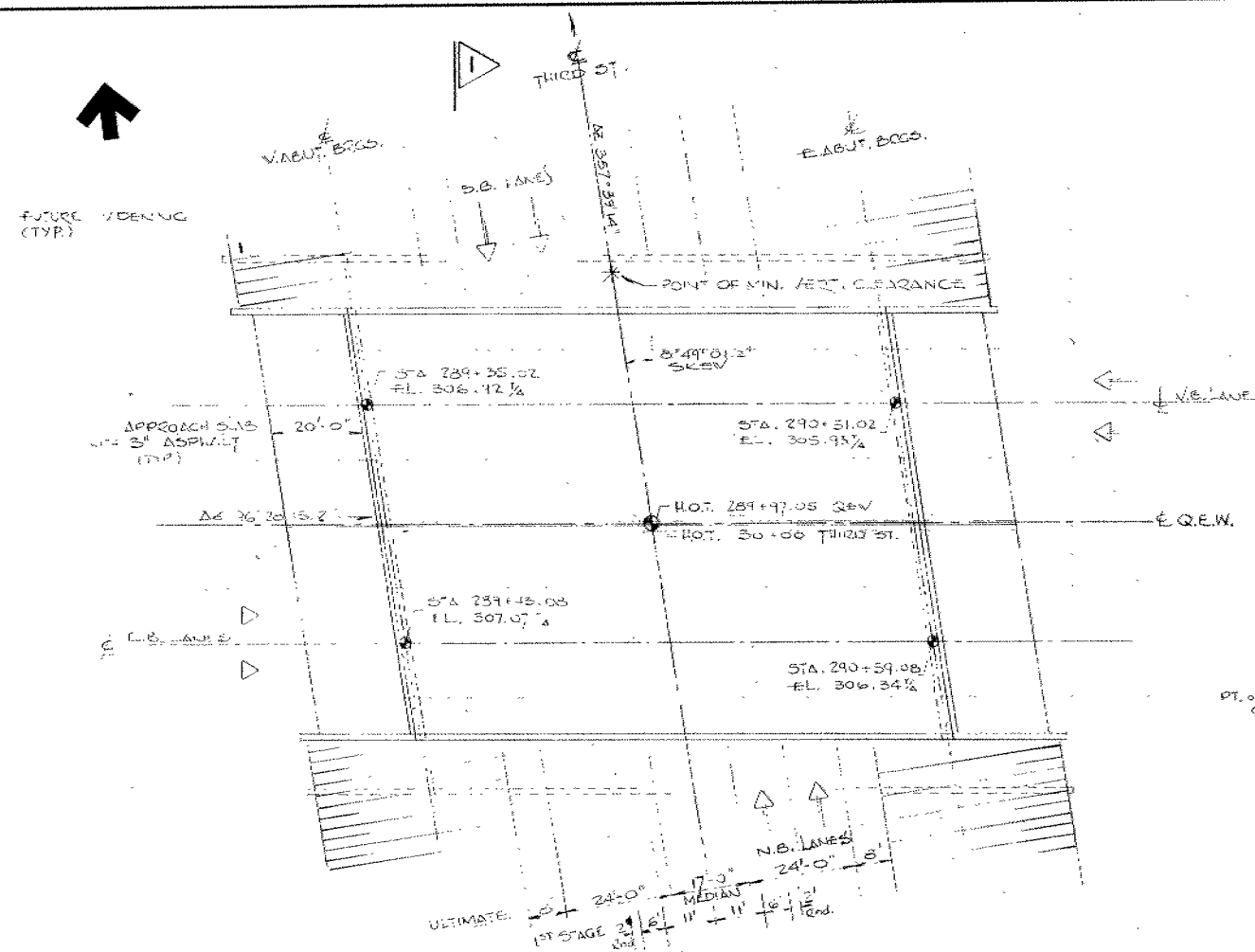
LOCATION WB/EB Lanes Overpass
at Third St.

No of PAGES - Bridges # 16 & 17

=====

OVERSIZE DRAWINGS TO BE INCLUDED WITH THIS REPORT.

REMARKS:



CONCRETE QUANTITIES

CONCRETE QUANTITIES ARE LISTED BELOW FOR THE APPROPRIATE CONCRETE LUMP SUM TENDER ITEMS

1. CONCRETE IN ABUTMENTS & WINGWALLS	409 CU.YDS.
2. CONCRETE IN DECK	287 CU.YDS.
3. CONCRETE IN BARRIER WALLS	50 CU.YDS.
4. CONCRETE IN APPROACH SLABS	116 CU.YDS.
5. CONCRETE IN SLOPE PAVINGS	66 CU.YDS.

STRUCTURAL STEEL QUANTITIES 179 TONS

GENERAL NOTES

Class of Concrete

Abutments, Deck and Barrier Walls 30 MPa
 Remainder 20 MPa

Clear Cover to Reinforcing Steel

Footings and Abutments 3"
 Deck 2" top, 1 1/2" bottom
 Barrier Walls 1 1/2" (except as noted)
 Approach Slabs 2"

To achieve the min. clear cover of 2" specified, the top layer of deck steel shall be placed prior to concreting with a clear cover of 2 1/2" ± 1/2" tolerance.

Reinforcing Steel : Grade 400
 Bar marks with the suffix "c" shall be coated bars.

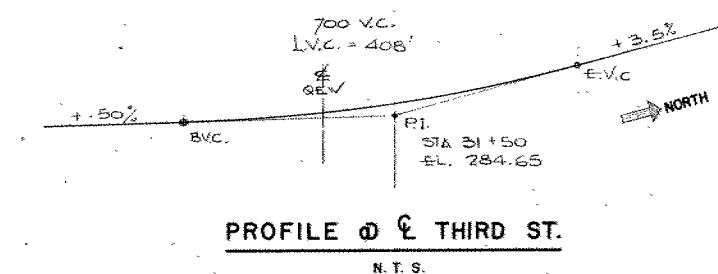
Construction Notes

The Contractor is responsible for finishing the bearing seats dead level to the specified elevations with a tolerance of ± 1/8".

No concrete shall be placed above the abutment bearing seats until the concrete in the deck has been placed.

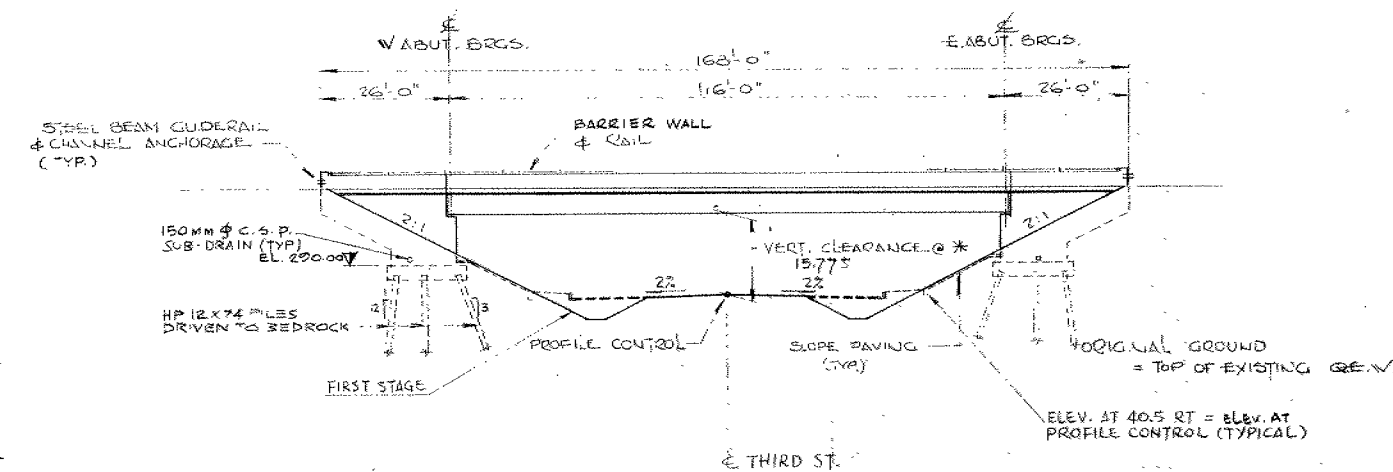
LIST OF DRAWINGS

1. GENERAL ARRANGEMENT
2. BOREHOLE LOCATIONS AND SOIL STRATA
3. FOUNDATION LAYOUT
4. WEST ABUTMENT
5. EAST ABUTMENT
6. WING WALLS
7. STRUCTURAL STEEL
8. DECK REINFORCING
9. DECK LAYOUT AND SCREED ELEVATIONS
10. BARRIER WALL
11. 20 FT. APPROACH SLAB
12. STEEL RAILING (SINGLE TUBE)
13. DETAILS OF CONC. SLOPE PAVING
14. AS CONSTRUCTED ELEV. & DIM.
15. STANDARD DETAILS I
16. STANDARD DETAILS II
17. STANDARD DETAILS III

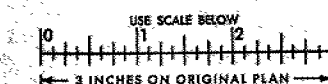


STATION	ELEV. & PROFILE CONTROL	E.B.L.	W.B.L.
289+00	307.16	307.15	
289+25	307.12	306.99	
289+50	307.05	306.83	
289+75	306.96	306.64	
290+00	306.84	306.42	
290+25	306.67	306.19	
290+50	306.43	305.93	
290+75	306.17	305.64	
291+00	305.85	305.24	

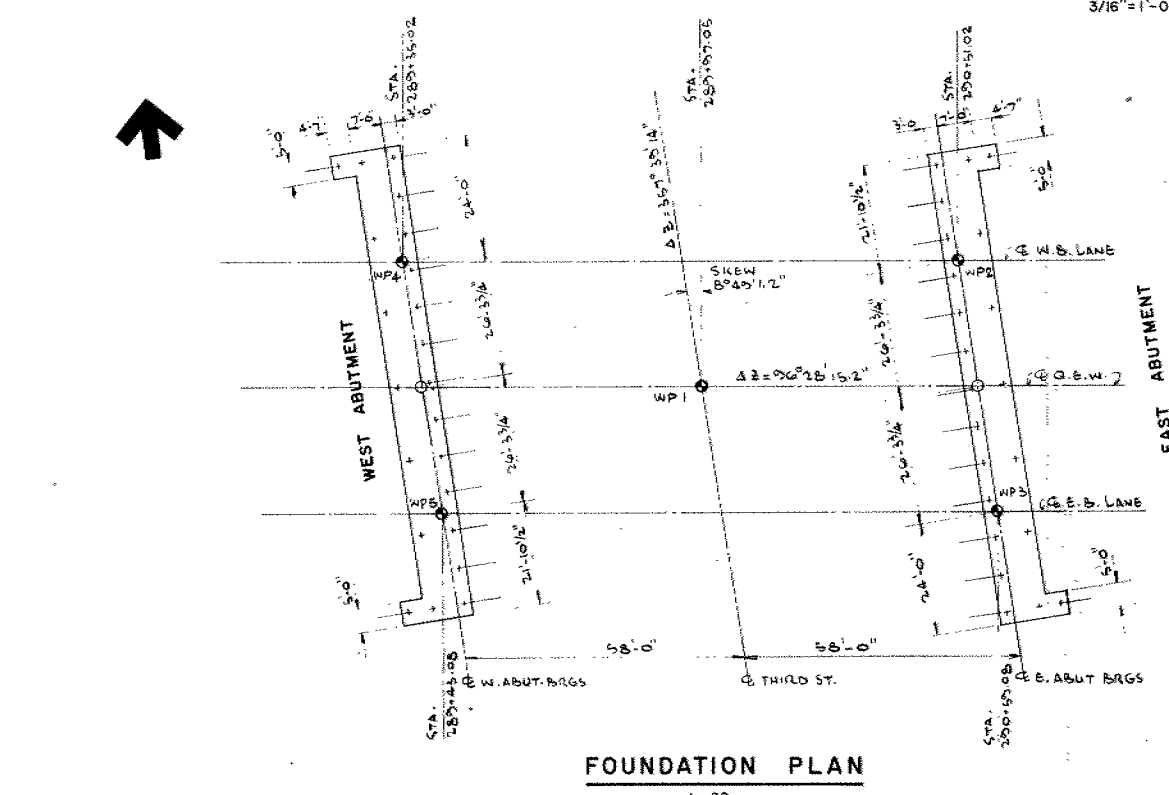
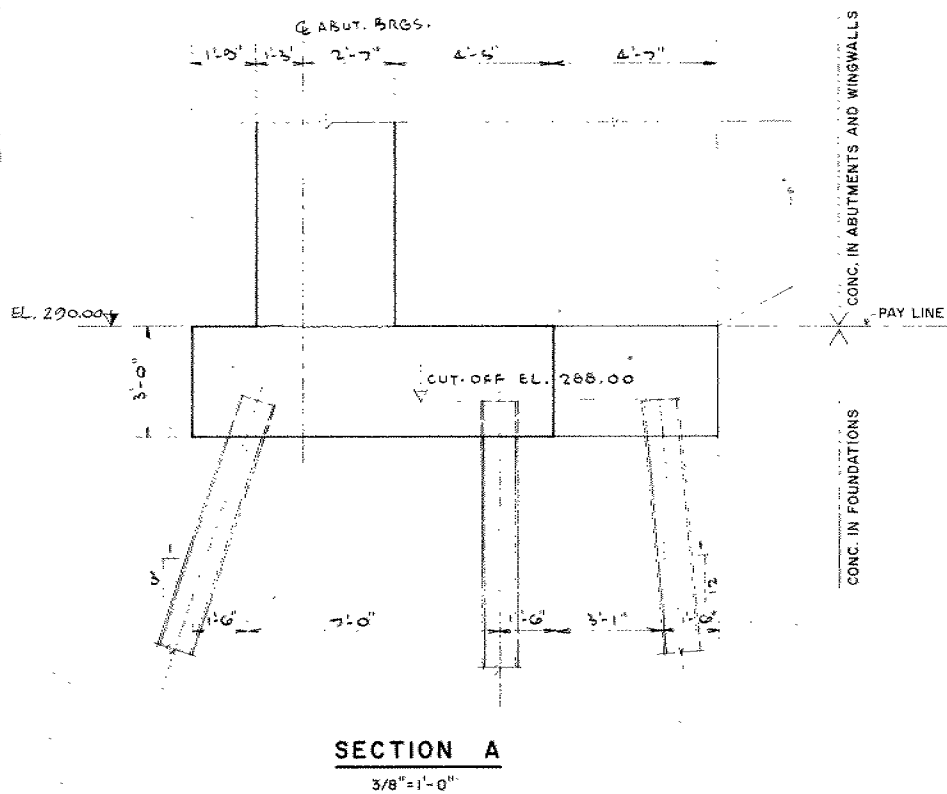
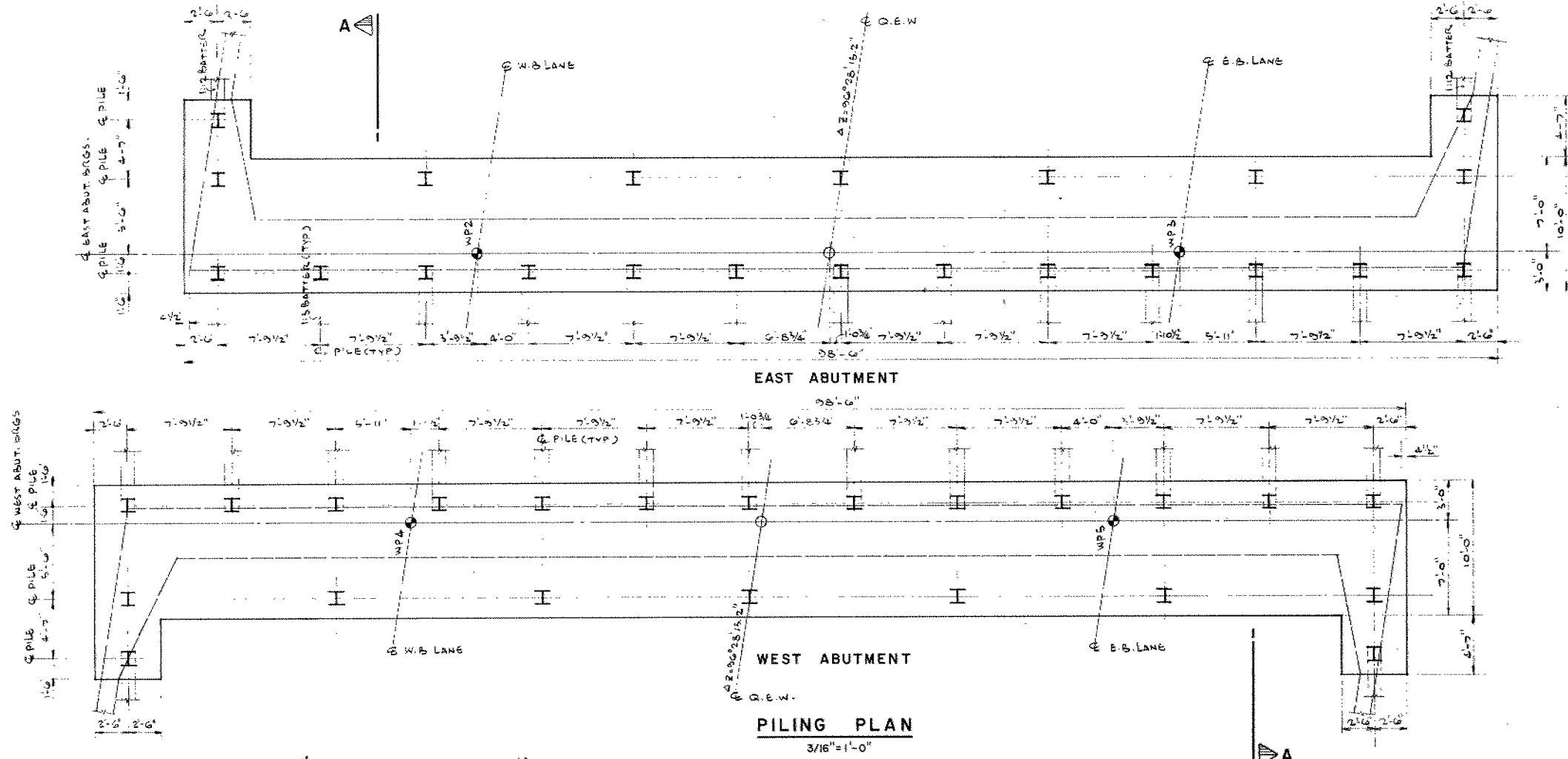
PROFILE OF EXISTING Q.E.W.



FOR REDUCED PLAN



REVISIONS	DATE	BY	DESCRIPTION
DESIGN	CHECK	LOADING HS 20-44	DATE Sept. 77
DRAWING	CHECK	SITE No 18-246	DWG 1



LOCATION OF WORKING POINTS

W. P.	STATION-CONTROL LINE & Q.E.W.	CO-ORDINATES	
		NORTH	EAST
1	289 + 97.05	15688285.467	1056572.686
2	290 + 51.02	15688305.219	1056629.239
3	290 + 59.08	15688252.642	1056631.394
4	289 + 35.02	15688318.642	1056513.978
5	289 + 43.08	15688265.715	1056516.133

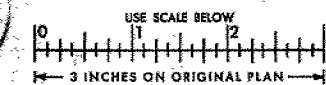
PILE DATA

TYPE	LOCATION	No.	BATTER	LENGTH	CUT-OFF ELEVATION	TIP ELEV.
HP 12 x 74 DESIGN LOAD 120 tons	ABUTMENTS	14	VERT.	68' - 0"	288.00	220.00
		26	1:3	72' - 0"	288.00	220.00
		4	1:12	68' - 0"	288.00	220.00

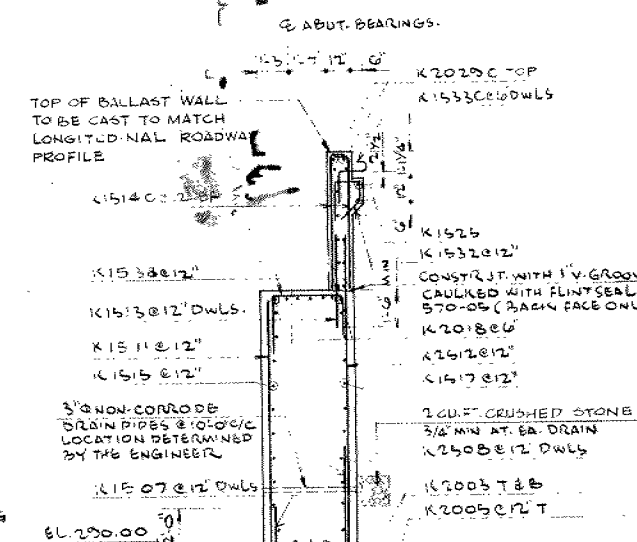
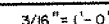
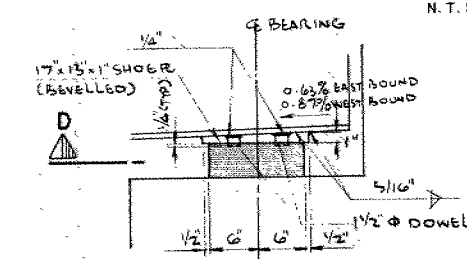
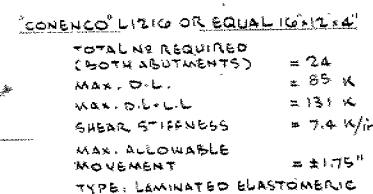
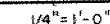
- NOTES:**
1. PILES TO BE DRIVEN TO BEDROCK.
 2. PILE TIPS TO BE REINFORCED ACCORDING TO M.T.C. STANDARD SS3-1
 3. PILE SPACING TO BE MEASURED AT UNDERSIDE OF FOOTING.
 4. PILE LENGTH SHOWN ON THE DRAWING IS THE THEORETICAL LENGTH BELOW CUT-OFF.



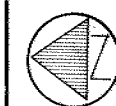
FOR REDUCED PLAN



REVISIONS	DATE	BY	DESCRIPTION
DESIGN	77	CHECK	LOADING HS20-44
DRAWING	11	CHECK PF	SITE No 18-246
			DWG 3


$$3/16'' = (1' - 1)$$


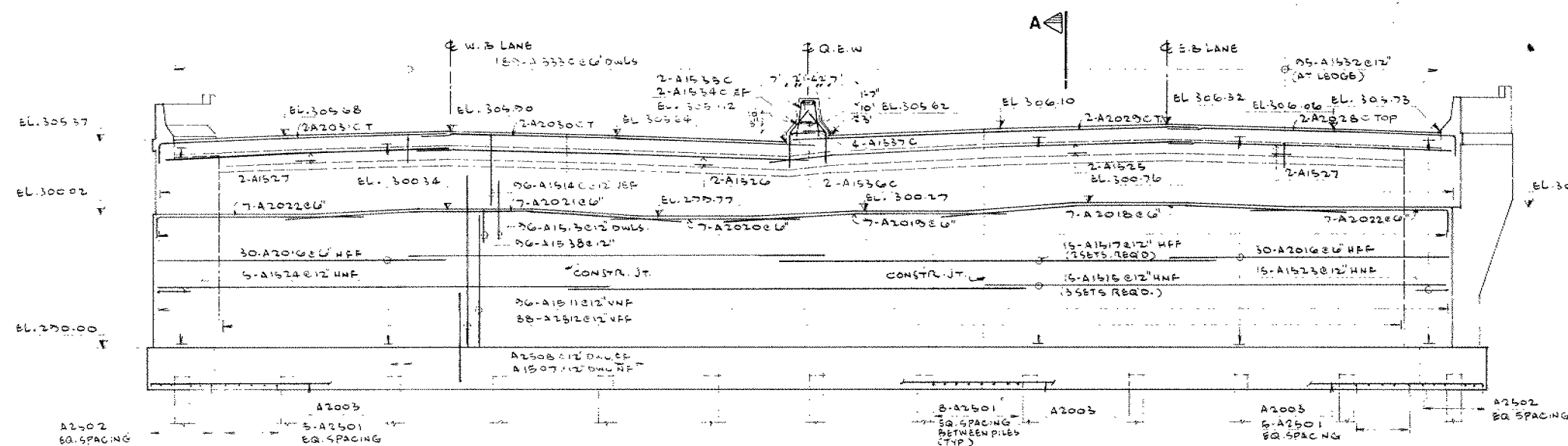
3	REVISIONS							
	DATE	BY	DESCRIPTION					
	DESIGN	FF	CHECK		LOADING	HS20-44	DATES	
	DRAWING	PL	CHECK	FF	SITE	No 18-246	DWG	



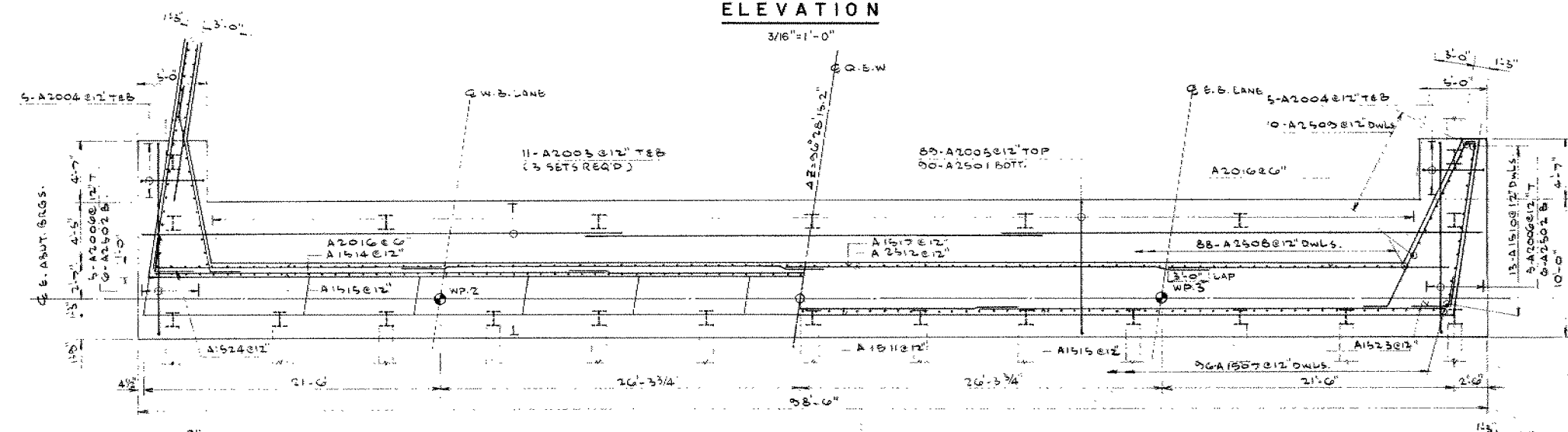
Q.E.W. E.B. & W.B. LANES - THIRD ST.
OVERPASS - BRIDGE #16
HWY 406 - Q.E.W. INTERCHANGE
EAST - ABUTMENT

SHEET

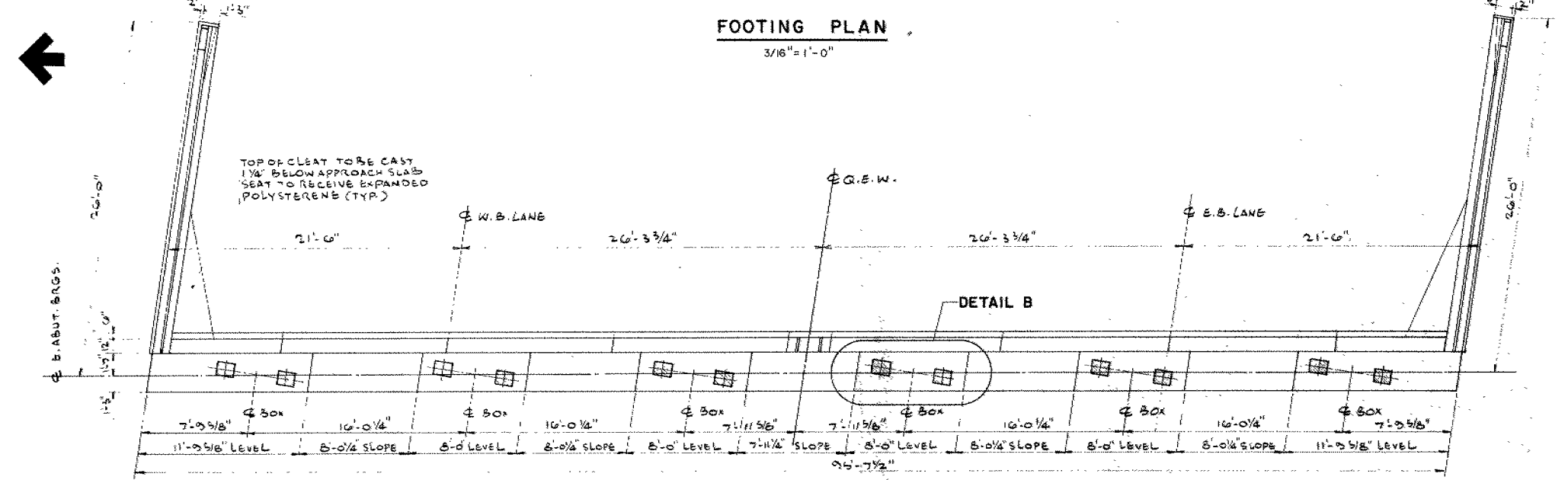
Proctor & Redfern Limited
Consulting Engineers
Toronto
E.O. 79175



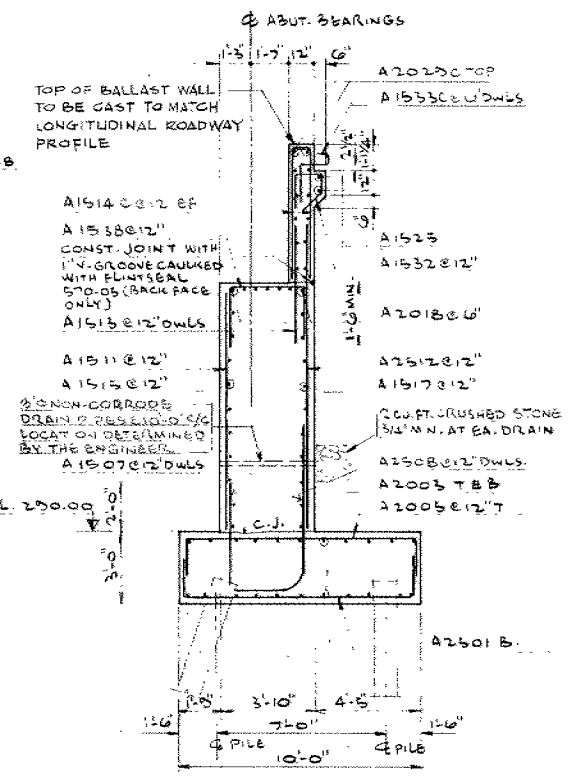
ELEVATION
3/16"=1'-0"



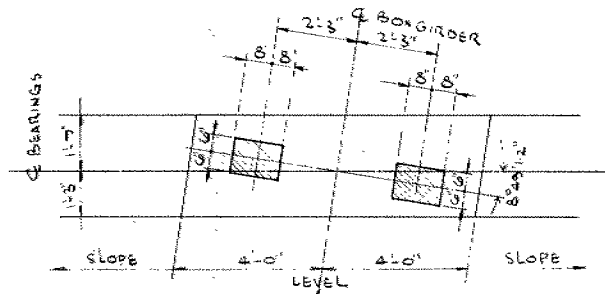
FOOTING PLAN
3/16"=1'-0"



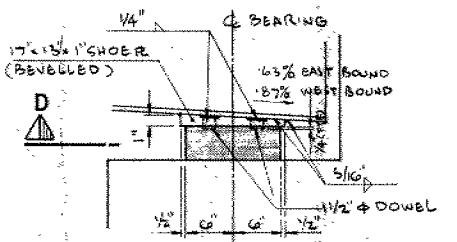
BEARING PLAN
3/16"=1'-0"



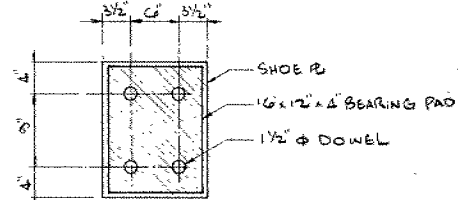
SECTION A
1/4"=1'-0"



SECTION B
N.T.S.



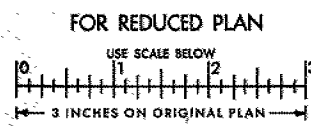
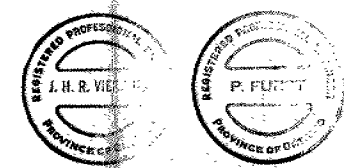
SECTION C
N.T.S.



SECTION D
N.T.S.

NOTE:
N.F. - DENOTES NEAR FACE
F.F. - DENOTES FAR FACE

NOTE:
FOR BEARING DATA SEE
DWG #4



REVISIONS	DATE	BY	DESCRIPTION
1	1974	J. H. R. VIE	DESIGN
2	1974	J. H. R. VIE	CHECK
3	1974	J. H. R. VIE	DRAWING

LOADING HS20-44	DATE Sept. 79
SITE No 18-246	DWG 5