

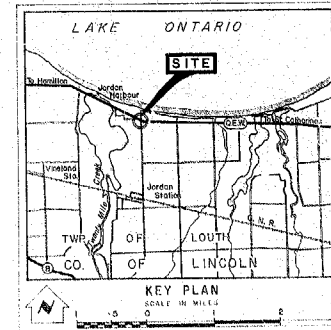
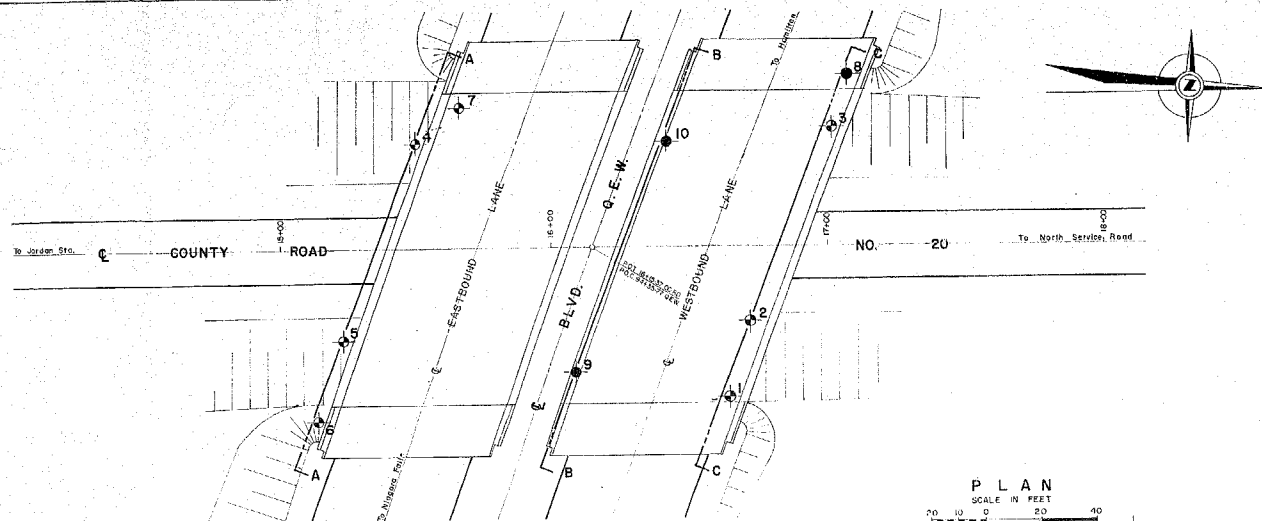
#64-F-13

W.P. # 111-60

G.E.W. i

PROP. CTY. RD. #20

OVERPASS



LEGEND			
	Bore Hole		
	Cone Penetration Hole		
	Bore & Cone Penetration Hole		
	Water Levels established at time of field investigation, (Mar. 1964)		
NO.	ELEVATION	STATION	CHISEL
1	2 6 7.2	16 + 65	24" RL
2	2 6 6.8	16 + 72	27" RL
3	2 6 5.7	17 + 01	13" LT
4	2 6 8.5	15 + 43	38" LT
5	2 6 6.3	15 + 73	33" RL
6	2 6 5.9	15 + 14	62" RL
7	2 6 9.0	15 + 66	81" LT
8	2 6 7.1	17 + 07	82" LT
9	2 6 8.7	16 + 03	45" RL
10	2 6 8.3	16 + 42	38" LT

**NOTE**  
The boundaries between soil strata have been established only at Bore Hole locations. Between Bore Holes the boundaries are assumed from geological evidence and may be subject to considerable error.

NO.	DESCRIPTION
1	
2	
3	
4	
5	
6	
7	
8	
9	
10	

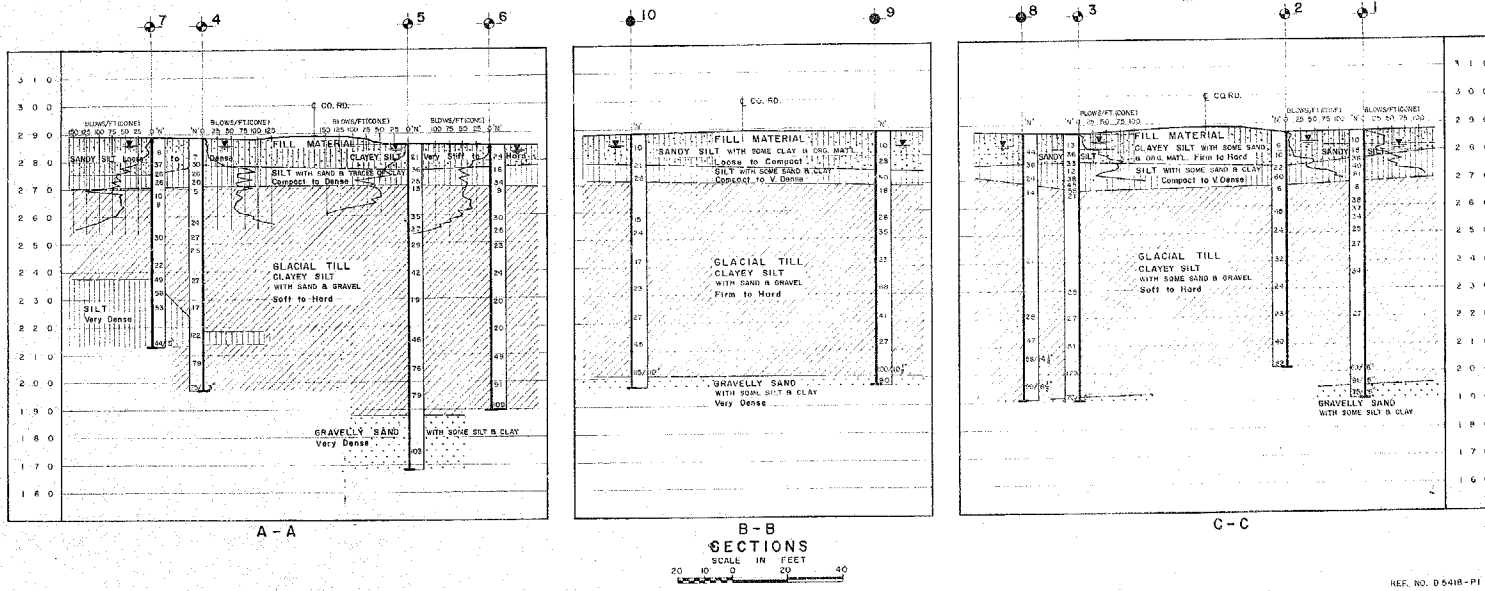
DEPARTMENT OF HIGHWAYS - ONTARIO  
DATABASE & RESEARCH DIVISION - TRANSPORTATION

**COUNTY ROAD NO. 20**

KING'S HIGHWAY NO. Q.E.W. DIST NO. 4  
CO. LINCOLN  
TWP. LOUTH LOT 16 & 17 CON. I & B.F.

**BORE HOLE LOCATIONS & SOIL STRATA**

SEARCHED BY M.H. CHECKED BY M.H. BORE HOLE NO. 64-F-13A  
DESIGNED BY D.M. CHECKED BY D.M. JOB NO. 64-F-13  
DATE 24 APRIL 1964 DATE BY  
APPROVED BY J. B. BROWN



REF. NO. D 5418-P1