

# 66-F-82

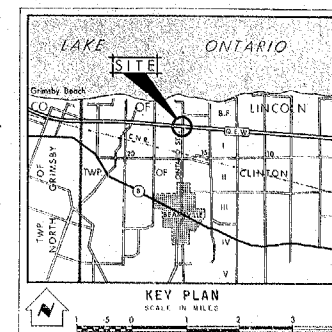
W.P. #221-63

Q.E.W. :

ONTARIO ST.

CTY. RD. #26

BEAMSVILLE



**LEGEND**

- Bore Hole
- Cone Penetration Hole
- Bore & Cone Penetration Hole
- Water Levels established at time of field investigation - SEPT. 1966

NO.	ELEVATION	STATION	OFFSET
1	280.0	31+8.9	4.4' LT.
2	279.4	31+5.3	4.4' RT.
3	278.0	30+8.0	5.0' LT.
4	279.0	30+0.0	3.6' RT.
5	279.1	29+2.3	4.0' LT.
6	279.2	28+8.8	3.0' RT.
7	278.3	26+2.2	4.2' LT.
14	278.5	31+0.3	3.5' LT.

**NOTE**  
The boundaries between soil strata have been established only at Bore Hole locations. Between Bore Holes the boundaries are assumed from geological evidence and may be subject to considerable error.

DATE	BY	DESCRIPTION

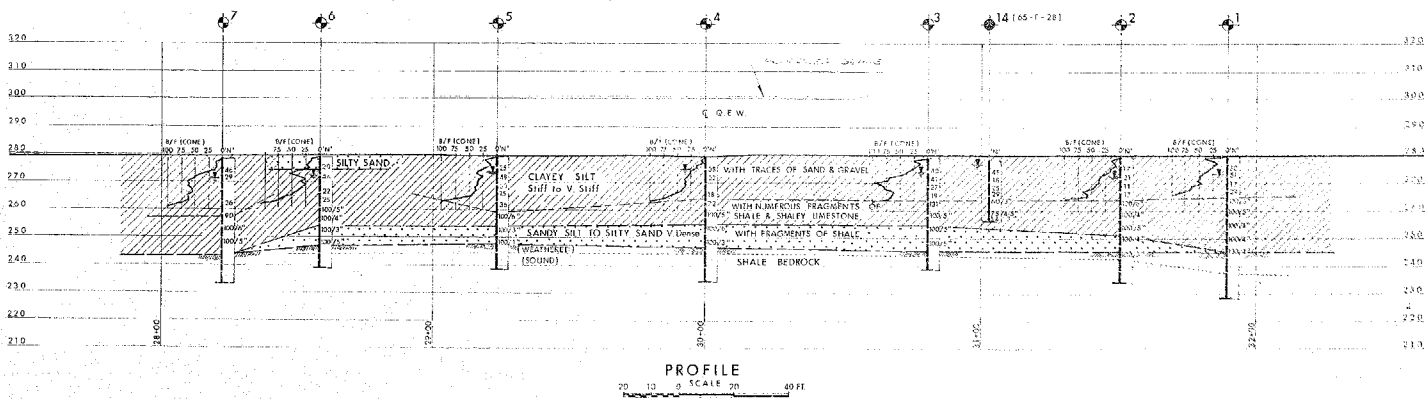
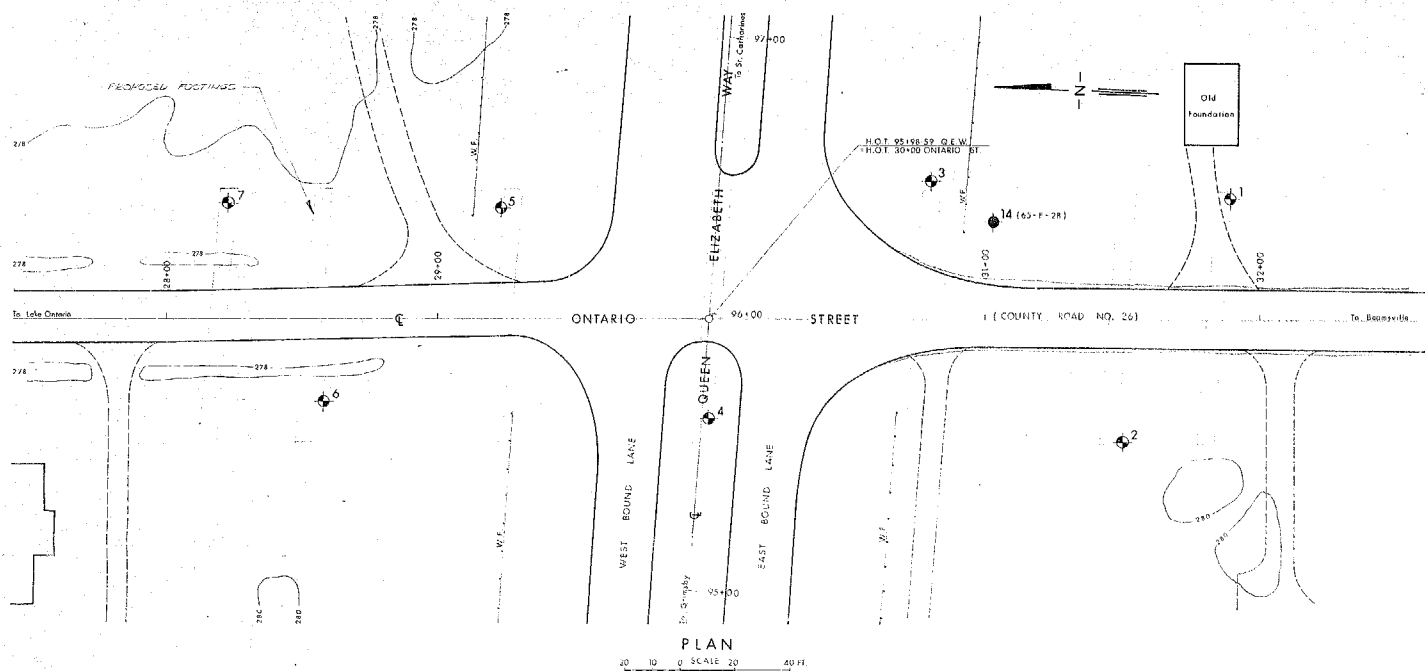
DEPARTMENT OF HIGHWAYS - ONTARIO  
MATERIALS & TESTING DIVISION - FOUNDATION SECTION

**ONTARIO STREET (BEAMSVILLE)**

KING'S HIGHWAY NO. Q.E.W. DIST. NO. 4  
CO. LINCOLN  
TWP. CLINTON LOT 16 & 17 CON. 1 & B.F. 4

**BORE HOLE LOCATIONS & SOIL STRATA**

SUPPLY V.K. CHECKED ☒ W.P. NO. 221-63 H.B.T. DRAWING NO.  
DRAWN S.O. CHECKED ☒ JOB NO. 66-F-82 **66-F-82A**  
DATE 14 NOV. 1966 SITE NO. BRIDGE DRAWING NO.  
APPROVED ☒ J.M. HICKS J.M. HICKS  
PROJECT NO. 66-101-101



PRINT RECORD

NO.	FOR	DATE

REF. NO. E-4747-1