

METRIC
DIMENSIONS ARE IN METRES
AND/OR MILLIMETRES
UNLESS OTHERWISE SHOWN

Parkway
Infrastructure
Engineers

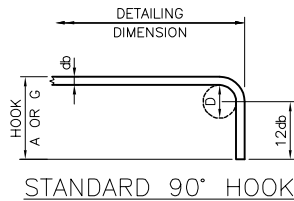


Windsor-Essex
Parkway Project
RFP No. 09-54-1007

NEW CONSTRUCTION
HWY 401
TRAIL BRIDGE OVER CABANA RD.-TODD LN. TB-4
STANDARD DETAILS

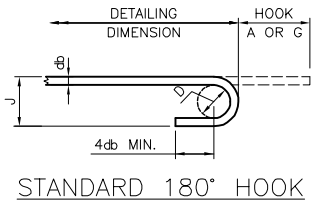


SHEET
S6415
Phase 1
IFC



MINIMUM BENDING PIN DIAMETER,
D, mm

BAR SIZE	STEEL GRADE	
	400R ⁽²⁾	400W
10M	70	60
15M	100	90
20M	120	100
25M	150	150
30M	250	200
35M	300	250
45M	450 ⁽¹⁾	400
55M	600 ⁽¹⁾	550



- (1) SPECIAL FABRICATION IS REQUIRED FOR BENDS EXCEEDING 90° FOR BARS OF THESE SIZES AND GRADE.
(2) FOR STAINLESS STEEL, WITH F_y = 420, USE THE SAME D AS FOR 400R.

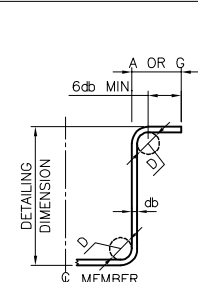
STANDARD HOOK DIMENSIONS

BAR SIZE	90° HOOKS		180° HOOKS			
	A OR G (mm)		A OR G (mm)		J (mm)	
	400R	400W	400R	400W	400R	400W
10M	180	180	140	130	90	80
15M	260	250	180	170	130	120
20M	310	300	220	200	160	140
25M	400	400	280	280	200	200
30M	510	490	400	350	310	260
35M	610	590	480	430	370	320
45M	790	770	680	630	540	490
55M	1030	1010	900	850	710	660

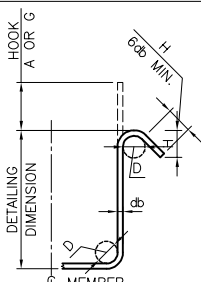
NOTE: ALL HOOK DIMENSIONS ARE ACCORDING TO THE CHBDC-2000.

MINIMUM STIRRUP AND TIE HOOK DIMENSIONS

BAR SIZE	BAR DIAM. ϕ_b (mm)	PIN DIAM. D (mm)	90°		135°
			A OR G (mm)	A OR G (mm)	H (APPROX.) (mm)
10M	11.3	45	100	100	70
15M	16.0	65	140	140	100
20M	19.5	80	180	175	115
25M	25.2	100	230		



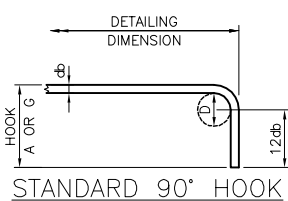
MIN. 90° HOOK



MIN. 135° HOOK

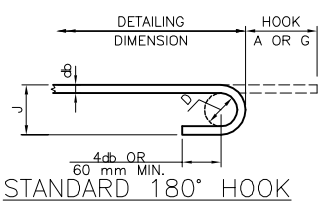
HOOK DIMENSIONS
FOR UNCOATED BARS

Date	JUNE 2002	Rev	
SS12-1			



MINIMUM BENDING PIN DIAMETER, D, mm

BAR SIZE	STEEL GRADE 400
10M	80
15M	120
20M	160
25M	200
30M	240
35M	350
45M	450
55M	550



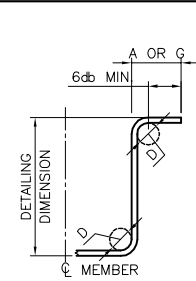
STANDARD HOOK DIMENSIONS

BAR SIZE	90° HOOKS		180° HOOKS
	A OR G (mm)	A OR G (mm)	J (mm)
10M	190	210*	110*
15M	270	260*	160*
20M	330	300*	200
25M	430	330	250
30M	610	460*	300
35M	640	700*	430*
45M	790	850*	540
55M	1010	1050*	680*

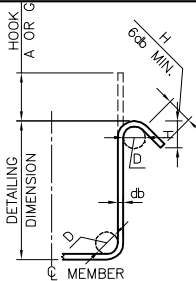
NOTE: TABULATED VALUES FOR STANDARD HOOK DIMENSIONS ARE THE LARGER OF CALCULATED (ACCORDING TO CHBDC-2000) AND REINFORCING STEEL INSTITUTE OF CANADA (RSIC) REQUIREMENTS. VALUE MARKED BY ** INDICATE RSIC RECOMMENDED MINIMUM.

MINIMUM STIRRUP AND TIE HOOK DIMENSIONS

BAR SIZE	BAR DIAM. ϕ_b (mm)	PIN DIAM. D (mm)	90°		135°
			A OR G (mm)	A OR G (mm)	H (APPROX.) (mm)
10M	11.3	90	180	190	120
15M	16.0	130	190	220	130
20M	19.5	160	230	260	150
25M	25.2	200	280		



MIN. 90° HOOK



MIN. 135° HOOK

NOTE: VALUE MARKED BY ** INDICATES RSIC RECOMMENDED MINIMUM, BASED ON THE AVERAGE OF 90° AND 180° HOOKS.

HOOK DIMENSIONS
FOR COATED BARS

Date	JUNE 2002	Rev	
SS12-2			



DRAWING NOT TO BE SCALED
100mm ON ORIGINAL DRAWING

REVISIONS		DATE	REV.	BY	DESCRIPTION
19-JUN-14	0	JL			ISSUED FOR CONSTRUCTION
DESIGN	BM	CHK	JL	CODE CAN/CSA S6-06	LOAD SEE T.A.F. DOC.
DRAWN	RD	CHK	MAS	SITE 6-619	DATE JUN 2013