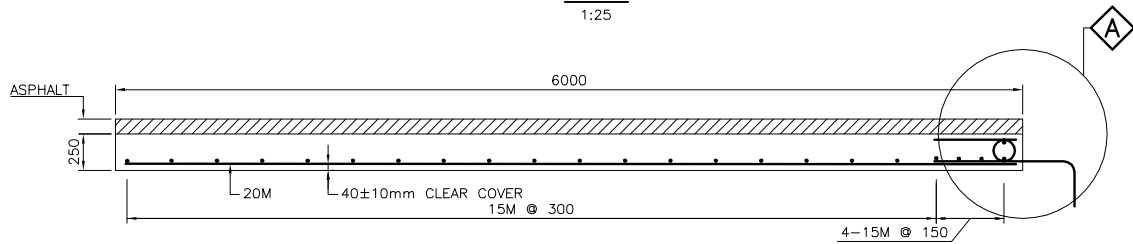
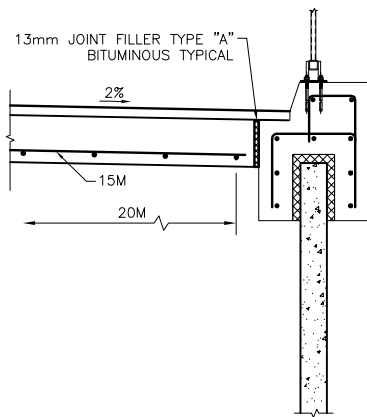
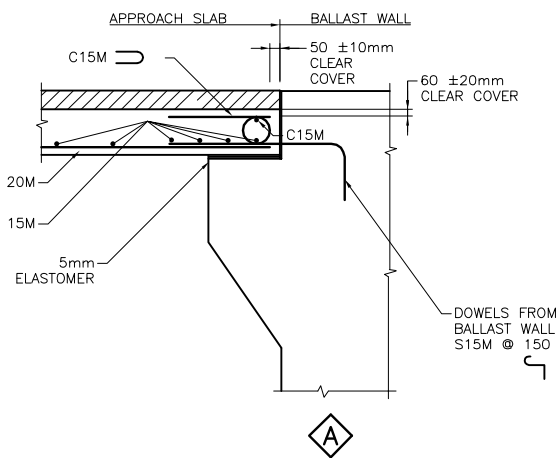


PLAN  
1:25



LONGITUDINAL SECTION  
1:25



SECTION AT RSS WINGWALL

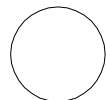
METRIC

DIMENSIONS ARE IN METRES  
AND/OR MILLIMETRES  
UNLESS OTHERWISE SHOWN

Parkway  
Infrastructure  
Engineers



Windsor-Essex  
Parkway Project  
RFP No. 09-54-1007



NEW CONSTRUCTION  
HWY 401  
TRAIL BRIDGE OVER CABANA RD.-TODD LN. TB-4  
6000mm APPROACH SLAB

SHEET  
S6414

Phase 1  
IFC

NOTES

- CLEAR COVER TO REINFORCING STEEL 70 ± 20 mm EXCEPT AS NOTED.
- LAYOUT OF REINFORCING STEEL WILL BE SIMILAR FOR LEFT HAND AND ZERO DEGREE SKEW.
- BARS MARKED WITH PREFIX C DENOTE COATED BARS.
- WATERPROOFING AT JOINT BETWEEN BRIDGE AND APPROACH SLAB TO BE IN ACCORDANCE WITH OPSD-3370.1000.
- WATERPROOFING FOR BRIDGES WITHOUT EXPANSION JOINTS (RIGID FRAMES AND INTEGRAL ABUTMENTS) TO BE IN ACCORDANCE WITH OPSD-3370.1010.

APPLICABLE STANDARD DRAWINGS

- OPSD-3370.100 DECK, WATERPROOFING HOT APPLIED ASPHALT MEMBRANE WITH PROTECTION BOARD
- OPSD-3370.101 DECK, WATERPROOFING HOT APPLIED ASPHALT MEMBRANE AT ACTIVE CRACKS GREATER THAN 2mm WIDE AND CONSTRUCTION JOINTS

TOP OF CONCRETE ELEVATION		
POINT	WEST APPROACH SLAB	EAST APPROACH SLAB
(A)	186.914	186.064
(B)	187.144	186.364
(C)	186.951	186.100
(D)	187.180	186.400
(E)	186.914	186.064
(F)	187.144	186.364



MODIFIED	
STANDARD DRAWING APRIL 2008	SS116-1
6000 mm APPROACH SLAB	



DRAWING NOT TO BE SCALED  
100mm ON ORIGINAL DRAWING

REVISIONS	DATE	REV.	BY	DESCRIPTION
19-JUN-14	0	JL	ISSUED FOR CONSTRUCTION	
DESIGN	BM	CHK	JL	CODE CAN/CSA S6-06 LOAD SEE T.A.F. DOC.
DRAWN	RD	CHK	MAS	SITE 6-619 DATE JUN 2013