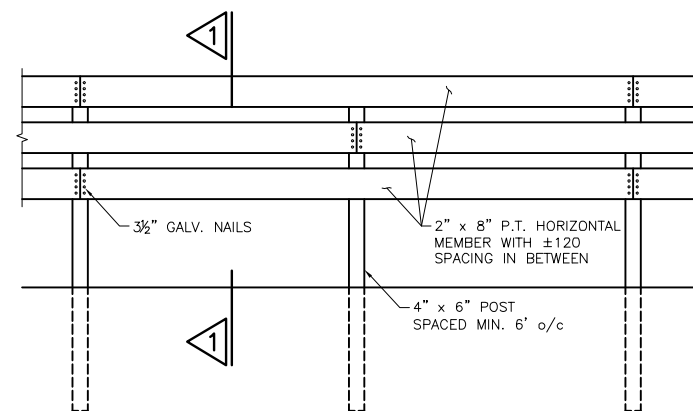
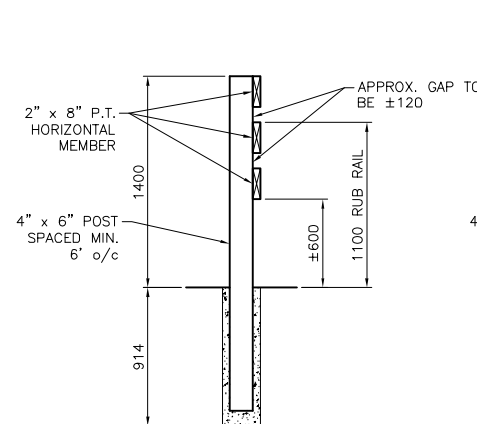


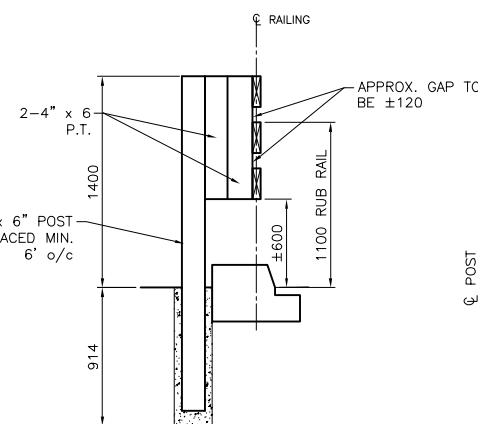
TYPICAL RAILING TRANSITION PLAN  
SCALE 1:20



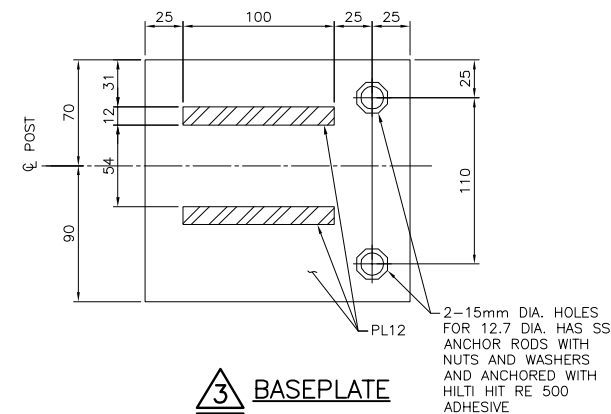
ELEVATION  
SCALE 1:25



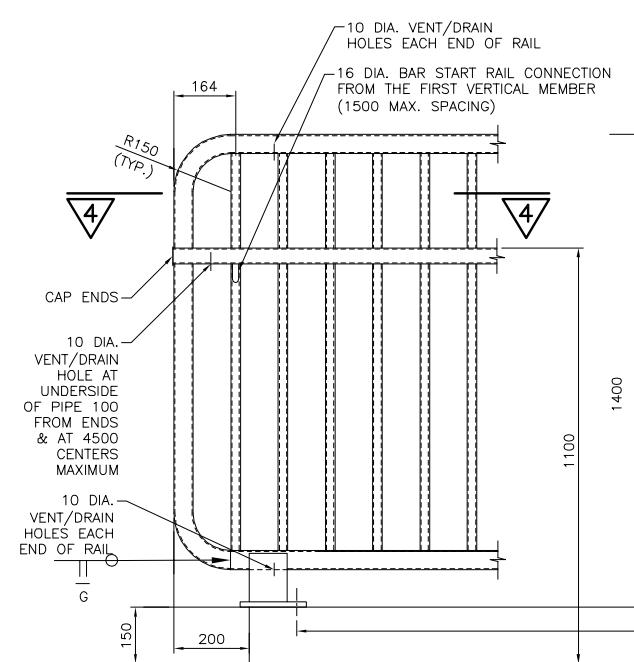
 SECTION  
SCALE 1:25



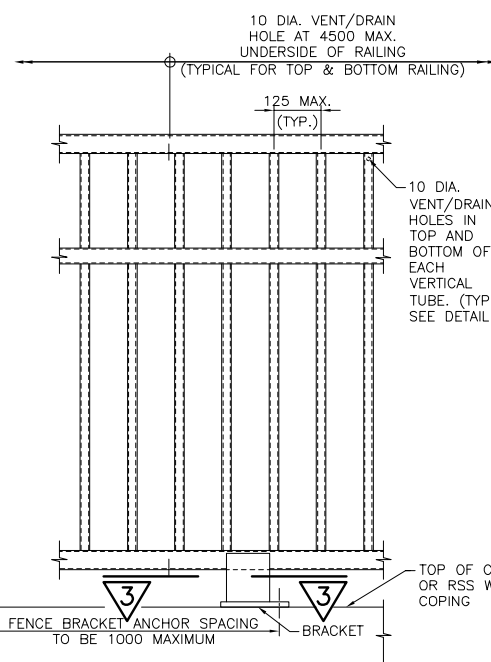
2 SECTION  
SCALE 1:25



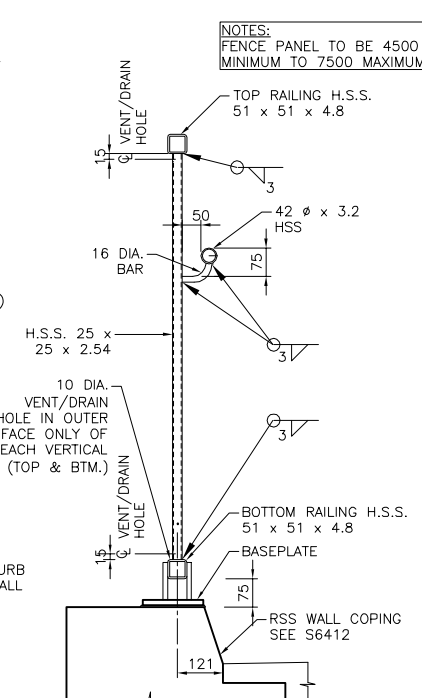
 BASEPLATE  
SCALE 1:2.5



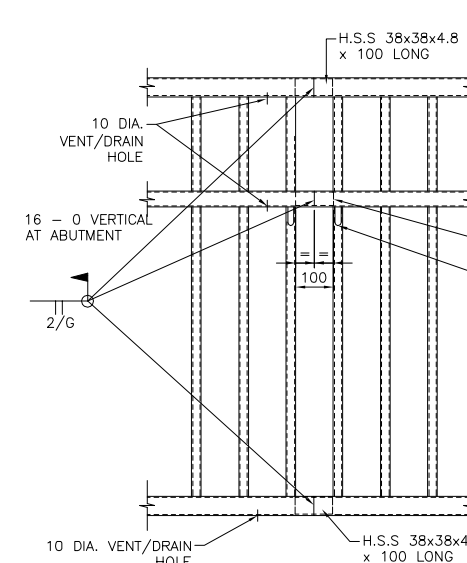
END DETAIL  
SCALE 1:10



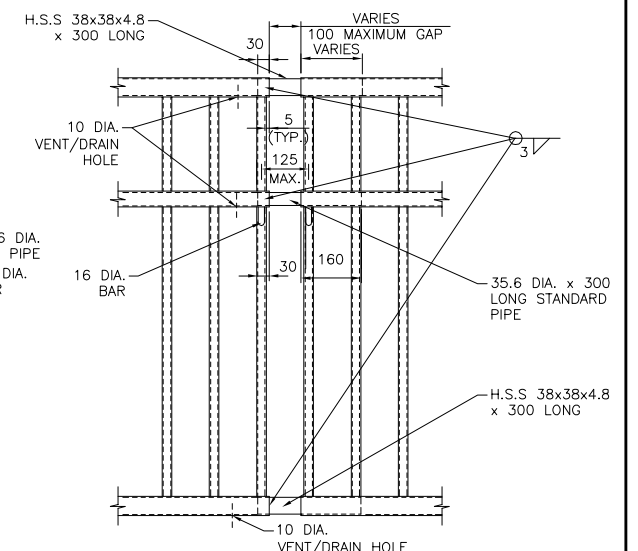
TYPICAL DETAIL  
SCALE 1:10



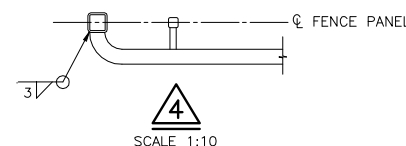
TYPICAL SECTION  
RSS WALL (ALONG TRAIL)  
SCALE 1:10



TYPICAL RAIL SPLICE  
SCALE 1:10



RAIL EXPANSION JOINT  
SCALE 1:10



PEDESTRIAN BARRICADE II DETAILS (ALONG RSS WALL)

**PARKWAY**  
INFRASTRUCTURE CONSTRUCTION

**APPROVED FOR  
CONSTRUCTION**

**JUN 26 2014**

PDDM

METRIC

DIMENSIONS ARE IN METRES  
AND/OR MILLIMETRES  
UNLESS OTHERWISE SHOWN

# Parkway Infrastructure Engineers



Windsor-Essex  
Parkway Project  
RFP No. 09-54-1007

NEW CONSTRUCTION	
HWY 401	
TRAIL BRIDGE OVER CABANA RD.-TODD LN. TB-4	
PEDESTRIAN BARRICADES LAYOUT AND DETAILS	


SHEET
S6413
Phase 1
IFC

BARRICADE 1 NOTES:

1. POSTS SHALL BE SET IN CENTRE OF 254mm(10") x 914mm(36") DEEP CONCRETE FOOTINGS.
2. CONCRETE SHALL HAVE A NOMINAL MINIMUM 28-DAY COMPRESSIVE STRENGTH OF 20MPa.
3. CONSTRUCTION SHALL BE IN ACCORDANCE WITH ONTARIO BUILDING CODE.
4. ALL LUMBER TO BE PRESSURE TREATED.
5. ALL FASTENERS TO BE GALVANIZED.

BARRICADE II NOTES:

1. ANCHORS SHALL BE INSTALLED ACCORDING TO MANUFACTURER'S SPECIFICATIONS.
2. POSTS AND RAILINGS SHALL BE HOT DIP GALVANIZED ACCORDING TO CSA G164 AFTER FABRICATION.
3. POSTS SHALL BE VERTICAL. ALL EXPOSED CORNERS TO BE GROUND SMOOTH.
4. WELDING SHALL BE ACCORDING TO CSA W59.
5. ALL JOINTS SHALL BE SHOP WELDED U.N.O.
6. FIELD WELDS TO BE PAINTED WITH 2 COATS ZINC RICH PAINT.
7. PIPE SHALL BE ACCORDING TO ASTM A53.
8. A DIFFERENCE IN ELEVATION BETWEEN THE ADJACENT GROUND LEVEL AND TOP OF FOOTING SHALL NOT EXCEED 600MM.
9. AN ALTERNATE EXPANSION JOINT DETAIL MUST BE DESIGNED IF THE DECK EXPANSION JOINT GAP EXCEEDS 100mm.
10. RAILING EXPANSION JOINTS TO BE LOCATED AT 30 000 MAXIMUM SPACING AND AT DECK JOINTS.