



THURBER ENGINEERING LTD.

**PRELIMINARY
FOUNDATION INVESTIGATION REPORT
HIDDEN VALLEY CULVERT REHABILITATION
HIGHWAY 403 AND HIGHWAY 6 INTERCHANGE
HAMILTON, ONTARIO
MTO SITE NO. 10-192/C
WO#16-20004
ASSIGNMENT NUMBER 2016-E-0027**

GEOCRES NO. 30M5-360

**Latitude: 43.306631°
Longitude: -79.867081°**

Report

to

AECOM

Date: November 6, 2023
File: 25963



TABLE OF CONTENTS

PART 1: FACTUAL INFORMATION

1.0	INTRODUCTION	1
2.0	SITE AND PROJECT DESCRIPTION	2
3.0	SITE INVESTIGATION AND FIELD TESTING.....	3
4.0	LABORATORY TESTING.....	4
5.0	SUBSURFACE CONDITIONS.....	4
5.1	Pavement Structure.....	5
5.2	Embankment Fill.....	5
5.3	Clayey Silt Till.....	6
5.4	Shale Bedrock.....	6
5.5	Groundwater Conditions.....	8
5.6	Corrosivity and Sulphate Test Results	8
6.0	MISCELLANEOUS	9

Statement of Limitations and Conditions.

APPENDICES

Appendix A	Record of Borehole Sheet (Present Investigation)
Appendix B	Geotechnical and Analytical Laboratory Test Results (Present Investigation)
Appendix C	Record of Borehole Sheets and Borehole Plan (Geocres/Previous investigation)
Appendix D	Rock Core Photographs (Present Investigation)
Appendix E	Borehole Location and Soil Strata Drawing



**PRELIMINARY
FOUNDATION INVESTIGATION REPORT
HIDDEN VALLEY CULVERT REHABILITATION
HIGHWAY 403 AND HIGHWAY 6 INTERCHANGE
HAMILTON, ONTARIO
MTO SITE NO. 10-192/C
WO#16-20004
ASSIGNMENT NUMBER 2016-E-0027**

GEOCRES NO. 30M5-360

1.0 INTRODUCTION

This report presents the factual findings obtained from a preliminary foundation investigation carried out by Thurber Engineering Ltd. (Thurber) for the preliminary design and environmental assessment of the culvert rehabilitation at the crossing of Hidden Valley Road under Highway 403 located in Hamilton, Ontario.

The purpose of this preliminary investigation was to explore the subsurface conditions at a selected location at the site and, based on the data obtained, to provide a borehole location plan, record of borehole, a stratigraphic profile and a written description of the subsurface conditions. This new information is to supplement archive subsurface information available for this site.

Thurber was retained by AECOM to carry out this Phase 2 preliminary foundation investigation under the Ministry of Transportation Ontario (MTO) Assignment Number 2016-E-0027.

This site is a part of the overall Highway 403 and Highway 6 Interchange Improvements project where 14 bridges, 3 structural culverts and 15 retaining walls are planned to be replaced, reconstructed or rehabilitated.

Reference has been made to information on subsurface conditions discussed in a Desktop Study carried out by Thurber as part of the Phase 1 scope of this project. The title of this Desktop Study as well as other references are listed as follows:

- Foundation Desktop Study Report, Preliminary Design and Environmental Assessment, Hidden Valley Culvert Rehabilitation, Highway 403 and Highway 6 Interchange, Hamilton, Ontario, W.O. # 16-20004, Site 10/192C, Geocres No. 30M5-340, prepared by Thurber, dated November 9, 2022 (Reference 1).



- Foundation Investigation Report, Highway Bridge West of Aldershot crossing at Hidden Valley, Report No. S-500-505/55/T-93-1, Geocres No. 30M05-064 prepared by Racey, MacCallum and Associates Limited, dated July 19, 1955. (Reference 2).
- Fill Failure Memorandum, Highway 403 and Hidden Valley Road, Station 231+50 to Station 232+00, District No. 4 (Hamilton), W.J. 68-F-51, W.P. 16-56-1, Geocres No. 30M05-067, dated July 8, 1968. (Reference 3).

It is a condition of this report that Thurber's performance of its professional services is subject to the attached Statement of Limitations and Conditions.

2.0 SITE AND PROJECT DESCRIPTION

The existing culvert is located at the crossing of Hidden Valley Road and Highway 403, approximately 2.5 km east of the Highway 6 and Highway 403 interchange, in the City of Hamilton, Ontario. This arch structure allows vehicular traffic to cross under the highway.

Highway 403 in the vicinity of the site generally runs in an east to west orientation along relatively flat terrain. Hidden Valley Road runs in a north to south direction and passes through the Highway 403 embankment. CN rail tracks run parallel to Highway 403 at approximately 75 m to the south. Grindstone Creek is located about 50 m east of the Hidden Valley culvert centreline. An arch culvert carries the creek under the highway. The lands surrounding the site are generally residential and commercial.

According to the archive drawings, the existing structure is a concrete arch culvert of approximately 96.8 m in length and 16.3 m in width. The culvert is orientated at an approximate 33° skew to the centreline of Highway 403. The maximum height of the opening inside the arch is approximately 6.9 m. Wingwalls are located at each of the four corners of the structure. The lengths of the wingwalls range between 8.7 m and 9.3 m. The heights of the wingwalls are in the order of 3 m above ground surface. The existing culvert footings were designed to have a width of approximately 2.3 m, and minimum embedment depths into "solid" rock in the order 0.9 m to 1.4 m. Based on a preliminary general arrangement (GA) drawing dated April 2022, the Hidden Valley Road grade varies from north to south from approximate Elevations 96.5 to 95.5. The highway embankment is up to the order of 12 m to 13 m in height. The existing arch structure and wingwalls have been designed to be supported on spread footings founded on bedrock.

Selected photographs and observations noted during Thurber's site reconnaissance visit are presented in the Foundation Desktop Study Report (Reference 1).

The project area is situated within the physiographic region known as the Niagara Escarpment, which forms a north-south trending strip, and is a major topographic break in the bedrock between



the carbonate Amabel Formation to the west and the soft sediments of the Queenston Formation to the northeast. At many locations, the Queenston Formation consists of up to 1.2 m of very weathered bedrock (red clay) which grades downward into typical brick-red shale and often with green mottling. Thin to medium beds of grey-green and reddish argillaceous, hard limestone are present in most sections. The Queenston shale is overlain by Halton Till in the area of the site. The Halton Till is a red clay to clayey silt till and is exposed in the form of a till plain extending from Lake Ontario southward to the Niagara escarpment.

3.0 SITE INVESTIGATION AND FIELD TESTING

The current borehole investigation and field testing program for this site was carried out on September 25, 2022, and consisted of drilling and sampling one (1) borehole designated as Borehole HV-01, which was drilled through the Highway 403 eastbound lane (EBL) embankment and terminated at 18.8 m depth (Elevation 88.5). Borehole HV-01 was advanced into shale bedrock by coring 3.6 m. The record of borehole sheet for this borehole is provided in Appendix A.

A foundation investigation was conducted at the site in 1955 (Reference 2) for Hidden Valley Road Culvert and Grindstone Creek Culvert. These sites are located approximately 45 m to 50 m apart. Six boreholes (numbered 1 to 6) were drilled in proximity to the original culvert alignments. The actual locations of these boreholes in relation to the existing culvert cannot be confirmed since a co-ordinate system was not used at the time, and there was no available record of the as-drilled locations of the boreholes and as-built location of the culvert. Record of Borehole Sheets and a borehole location plan from the previous investigations are included in Appendix C.

The approximate locations of all the boreholes (previous and present investigations) are shown on the Borehole Location and Soil Strata drawing in Appendix E.

Thurber surveyed Borehole HV-01 in the field, and obtained the borehole coordinates and ground surface elevation. The coordinates are related to MTM NAD 83 Zone 10. The survey equipment used was a Trimble R10 GNSS system with a horizontal precision of 3 mm and a vertical precision of 3.5 mm. The coordinates and elevation of the borehole are given on the Borehole Location and Soil Strata drawing in Appendix E and on the Record of Borehole Sheet in Appendix A.

Lane closure and traffic control were implemented for drilling the borehole for the current investigation. Prior to commencement of drilling, utility clearances were obtained for the borehole location.

The current borehole was advanced using a truck-mounted drill rig with solid stem augers. Soil samples were obtained at selected depth intervals using a 50 mm outside diameter split-spoon sampler driven in conjunction with the Standard Penetration Test (SPT) which was performed in



accordance with ASTM D1586. HQ rock coring equipment was used to recover core samples of the underlying bedrock in the borehole.

All rock cores were logged, and the Total Core Recovery (TCR), Rock Quality Designation (RQD) and the Fracture Indices (FI) were determined.

The current field investigation was supervised on a full-time basis by a member of Thurber's technical staff who marked the borehole in the field, observed and recorded the drilling, sampling and in-situ testing operations, logged the borehole and processed the recovered soil and rock samples for transport to Thurber's laboratory for further examination and testing.

Groundwater conditions in the open borehole were observed throughout the current drilling operations.

Borehole HV-01 was backfilled upon completion of drilling in general accordance with O.Reg. 903. Asphalt was reinstated in Borehole HV-01 drilled through the highway platform.

4.0 LABORATORY TESTING

The recovered soil samples were subjected to visual identification (VI) and to natural moisture content determination. Selected samples were subjected to grain size distribution analyses (sieve and/or hydrometer) testing. Geotechnical laboratory testing results of the current investigation are summarized on the Record of Borehole sheet included in Appendix A and are presented on the figures included in Appendix B.

Core samples of the shale bedrock were carefully protected to prevent drying during transport to the laboratory. Unconfined compressive strength (UCS) tests and point load tests were carried out on selected samples of intact shale upon arrival at the laboratory to assist in evaluation of the compressive strength of the bedrock. Detailed results of UCS tests and point load tests are included in Appendix B and summarized results are presented on the Record of Borehole sheet in Appendix A. Rock core photos are presented in Appendix D.

For preliminary assessment of potential for sulphate attack on concrete foundations, as well as the potential for metal corrosion associated with the structure, samples of the existing embankment fill were collected and submitted to SGS Canada Inc., a CALA accredited analytical laboratory in Lakefield, Ontario, for analytical testing for corrosivity parameters and sulphate content. The results of the analytical testing are summarized in Section 5.6 and are presented in Appendix B.

5.0 SUBSURFACE CONDITIONS

Details of the encountered subsurface stratigraphy are presented on the Record of Borehole sheet included in Appendix A, and on the Borehole Location and Soil Strata drawing in Appendix E. A



general description of the stratigraphy is given in the following paragraphs. However, the factual data presented in the Record of Borehole Sheet governs any interpretation of the site conditions. It must be recognized and anticipated that soil conditions may vary between and beyond the borehole location.

The soil stratigraphy encountered at the site during the previous investigation, prior to culvert and Highway 403 embankment construction, consists of typically stiff to very stiff, red to occasionally grey-green silty clay. The thickness of the silty clay varied from 0.76 m to 1.3 m. The silty clay was underlain by shale bedrock of the Queenston Formation. The soil conditions, particularly within the upper portion, may have been modified by the culvert construction.

Results of the 1968 investigation for a fill failure (Reference 3), after the culvert construction, indicated that the embankment material consisted of compact to very dense silty sand to sandy silt overlying weathered to sound red shale. Occasional seams of shale or silty clay, up to 300 mm in thickness, were encountered within the fill material.

The subsurface stratigraphy encountered during the present investigation consists of pavement structure overlying sand and silt/silty sand fill which is underlain by clayey silt till. Shale bedrock of the Queenston Formation was encountered below the clayey silt till. Water was used during rock coring and, therefore, the water level at this site during the field work may not represent the actual groundwater level.

More detailed descriptions of the individual stratum are presented below.

5.1 Pavement Structure

Pavement structure consisting of approximately 175 mm of asphalt overlying granular (sand and gravel fill, trace to some silt and clay) road base was encountered in Borehole HV-01. The thickness of the granular fill was 625 mm.

An SPT N-value recorded in the sand and gravel fill was 24 blows per 0.3 m of penetration indicating a compact state. Moisture content in the sand and gravel fill ranged from 4 percent to 10 percent.

5.2 Embankment Fill

Embankment fill was encountered underlying the pavement structure in the borehole. The embankment fill consisted of layers of brown to grey sand and silt and silty sand containing trace gravel and trace clay. Occasional shale fragments were encountered within the embankment fill below about 11 m depth. Layers of clayey silt and silty clays were encountered in the cohesionless fill. A dark brown to black sand layer was encountered within the fill at 7.9 m depth (Elevation 99.4).



A 100 mm thick layer of black sand and gravel was contacted at 12.5 m depth (Elevation 94.8). The combined thickness of the cohesionless fill was 11.7 m.

The depth to the base of the embankment fill was at 12.7 m (Elevation 94.8).

SPT N-values recorded in the sand and silt to silty sand fill ranged from 17 to 65 blows per 0.3 m of penetration indicating a compact to very dense state. Moisture contents measured in the cohesionless fill ranged from 3 percent to 14 percent.

The results of grain size distribution analysis carried out on samples of the sand and silt and silty sand fill are presented on the Record of Borehole Sheets and Figure B1 in Appendix B, and also summarized below:

Soil Particle	Percentage (%)
Gravel	0 to 6
Sand	48 to 70
Silt	20 to 45
Clay	5 to 7

5.3 Clayey Silt Till

A 700 mm thick layer of reddish brown clayey silt till, containing some sand, trace gravel and occasional shale fragments, was contacted below the embankment fill at 12.5 m depth.

The depth to the base of the clayey silt till was 13.3 m (Elevation 94.0).

An SPT N-value recorded in the clayey silt till was 57 blows per 0.3 m of penetration indicating a hard consistency. The moisture content in the clayey silt till was 15 percent.

Glacial tills inherently contain cobbles and boulders.

5.4 Shale Bedrock

The soils described above were found to be underlain by shale bedrock of the Queenston Formation which was contacted at 13.3 m depth (Elevation 94.0) in Borehole HV-01. Bedrock was proved by coring to 18.8 m depth (Elevation 88.5). The shale was described as red with grey and hard limestone interbeds and occasional clay seams. The shale bedrock is highly weathered (augered through prior to coring) transitioning to moderately weathered with depth. The shale contains layers of limestone that is significantly stronger than the shale itself. The distribution, thickness and strength of these layers vary from location to location, and the limestone layers typically exhibit less pronounced weathering than the shale.

Rock core photos are presented in Appendix D.



SPT N-values obtained in the upper, highly weathered, portion of the shale bedrock were 100 blows per 0.2 m and 0.05 m of penetration. A moisture content measured in the shale was 12 percent.

For the purpose of reporting herein, the upper zone of the shale will be referred to as weathered shale and the underlying sound portion will be considered as sound shale bedrock.

Depths and elevations of the top of bedrock encountered in the present and previous investigations are shown in Table 5.1.

Table 5.1 – Approximate Depth and Elevation of Shale Along Hidden Valley Culvert

Approximate location relative to existing culvert	Borehole	Bedrock Depth ⁽²⁾ (m)	Bedrock Elevation ⁽³⁾ (m)	Comments
North side	2 ^(1,2,3)	0.8	94.7	Shale bedrock proven by coring
Middle	1 ^(1,2,3)	1.3	93.8	Shale bedrock proven by coring
	HV-01 ⁽⁴⁾	13.3	94.0	Shale bedrock proven by coring
South side	3 ^(1,2,3)	0.8	93.4	Shale bedrock proven by coring
	4 ^(1,2,3)	0.8	92.9	Shale bedrock proven by coring

⁽¹⁾ The actual locations of these boreholes cannot be confirmed due to incomplete information.

⁽²⁾ All depths were converted from Imperial Units and relative to the ground surface prior to construction of the existing culvert.

⁽³⁾ It is unknown how the elevations are related to the Canadian Geodetic Datum currently in use.

⁽⁴⁾ Borehole drilled during the present investigation (September 2022).

It is noted that the soil and rock conditions reported on the previous boreholes, particularly within the upper portion, may have been modified by the original construction.

During the present investigation, bedrock cores were recovered using HQ sized coring equipment. Total Core Recovery (TCR) in the bedrock ranged from 81 percent to 100 percent

RQD values of 66 and 83 were recorded for Runs 1 to 3 indicating fair to good rock quality. Fracture Index (FI) of the rock, expressed as fractures per 0.3 m of core, ranged from 1 to 7.

Unconfined compressive strengths (UCS) interpreted from point load tests conducted on selected rock cores typically varied from 12 MPa to 41 MPa. The UCS of the rock, determined from two laboratory unconfined compression tests, were 16 MPa and 25 MPa. The combined results indicate a generally weak rock with some medium strong zones.

It must be noted, however, that UCS tests and point load tests were possible only on less weathered shale. Typical weathered shale cores tended to be not suitable for either test. Broken (rubble) zones were observed within the cores at several depths.



5.5 Groundwater Conditions

Water was used for rock coring and, therefore, the water level in the borehole upon completion of drilling is not considered representative of the groundwater level during the present field work.

Groundwater levels measured in the boreholes in Reference 2 are presented in Table 5.2.

Table 5.2 – Groundwater Level Measurements

Approximate location relative to existing culvert ⁽¹⁾	Borehole	Water Level Depth ⁽²⁾ (m)	Water level Elevation ⁽³⁾ (m)
North side	2	1.3	94.2
Middle section	1	1.1	94.0
South side	3	0.9	93.3
	4	1.0	92.7

Note: Refer to the notes under Table 5.1 above.

The surface topography has since been altered and it is anticipated that the drainage pattern at the site has been largely governed by the drainage measures along the existing Highway 403 and Hidden Valley Road.

5.6 Corrosivity and Sulphate Test Results

Selected soil samples were submitted for analytical testing of corrosivity parameters including sulphate content. The results of the analytical tests are shown in Table 5.3. The laboratory certificates of analysis are presented in Appendix B.

Table 5.3 – Analytical Corrosivity Test Results

Sample ID	Depth (m)	Soil Sample Description	Sulphide (percent)	Chloride (µg/g)	Sulphate (µg/g)	pH	Resistivity (ohm.cm)	Redox Potential (mV)	Electrical Conductivity (µS/cm)
HV-01, SS#3	1.7 to 2.3	Sand and silt fill	< 0.04	880	62	9.17	574	266	1,740
HV-01, SS#9	9.1 to 9.8	Silty sand fill	< 0.04	200	28	8.75	2,900	351	345



6.0 MISCELLANEOUS

Thurber marked the borehole location in the field and obtained utility clearances prior to drilling. Thurber surveyed the borehole in the field to obtain the borehole coordinates and ground surface elevation.

Elements GEO of Hamilton, Ontario supplied and operated the drilling and sampling equipment for the field program.

Full time supervision of the field activities was carried out by Mr. Felipe Kozminski of Thurber. Overall supervision of the field program was performed by Mr. Stephane Loranger, C.E.T. and Ms. Rocio Palomeque Reyna, P.Eng., of Thurber.

Interpretation of the field data and preparation of the report were carried out by Rocio Reyna, P,Eng. The report was reviewed by Sydney Pang, P.Eng. and P.K. Chatterji, P.Eng., a Designated Principal Contact for MTO Foundations Projects.



THURBER ENGINEERING LTD.



Rocío Palomeque Reyna, P.Eng.
Senior Geotechnical Engineer



Sydney Pang, P.Eng.
Senior Associate, Senior Foundation Engineer



P.K. Chatterji, P.Eng.
Review Principal, Designated MTO Contact

Client: AECOM

File No. 25963

E file: H:\20000-29999\25000-25999\25963 Hwy 403 & 6 2016-E-0027\Reports & Memos\Phase 2\Hidden Valley Culvert\FINAL\MTO
FINAL Review- Oct 30 2023\25963-Hidden Valley-Site 190-192-FINAL FIR Nov 2023.doc

Date: November 6, 2023

Page: 10 of 10

STATEMENT OF LIMITATIONS AND CONDITIONS

1. STANDARD OF CARE

This Report has been prepared in accordance with generally accepted engineering or environmental consulting practices in the applicable jurisdiction. No other warranty, expressed or implied, is intended or made.

2. COMPLETE REPORT

All documents, records, data and files, whether electronic or otherwise, generated as part of this assignment are a part of the Report, which is of a summary nature and is not intended to stand alone without reference to the instructions given to Thurber by the Client, communications between Thurber and the Client, and any other reports, proposals or documents prepared by Thurber for the Client relative to the specific site described herein, all of which together constitute the Report.

IN ORDER TO PROPERLY UNDERSTAND THE SUGGESTIONS, RECOMMENDATIONS AND OPINIONS EXPRESSED HEREIN, REFERENCE MUST BE MADE TO THE WHOLE OF THE REPORT. THURBER IS NOT RESPONSIBLE FOR USE BY ANY PARTY OF PORTIONS OF THE REPORT WITHOUT REFERENCE TO THE WHOLE REPORT.

3. BASIS OF REPORT

The Report has been prepared for the specific site, development, design objectives and purposes that were described to Thurber by the Client. The applicability and reliability of any of the findings, recommendations, suggestions, or opinions expressed in the Report, subject to the limitations provided herein, are only valid to the extent that the Report expressly addresses proposed development, design objectives and purposes, and then only to the extent that there has been no material alteration to or variation from any of the said descriptions provided to Thurber, unless Thurber is specifically requested by the Client to review and revise the Report in light of such alteration or variation.

4. USE OF THE REPORT

The information and opinions expressed in the Report, or any document forming part of the Report, are for the sole benefit of the Client. NO OTHER PARTY MAY USE OR RELY UPON THE REPORT OR ANY PORTION THEREOF WITHOUT THURBER'S WRITTEN CONSENT AND SUCH USE SHALL BE ON SUCH TERMS AND CONDITIONS AS THURBER MAY EXPRESSLY APPROVE. Ownership in and copyright for the contents of the Report belong to Thurber. Any use which a third party makes of the Report, is the sole responsibility of such third party. Thurber accepts no responsibility whatsoever for damages suffered by any third party resulting from use of the Report without Thurber's express written permission.

5. INTERPRETATION OF THE REPORT

- a) **Nature and Exactness of Soil and Contaminant Description:** Classification and identification of soils, rocks, geological units, contaminant materials and quantities have been based on investigations performed in accordance with the standards set out in Paragraph 1. Classification and identification of these factors are judgmental in nature. Comprehensive sampling and testing programs implemented with the appropriate equipment by experienced personnel may fail to locate some conditions. All investigations utilizing the standards of Paragraph 1 will involve an inherent risk that some conditions will not be detected and all documents or records summarizing such investigations will be based on assumptions of what exists between the actual points sampled. Actual conditions may vary significantly between the points investigated and the Client and all other persons making use of such documents or records with our express written consent should be aware of this risk and the Report is delivered subject to the express condition that such risk is accepted by the Client and such other persons. Some conditions are subject to change over time and those making use of the Report should be aware of this possibility and understand that the Report only presents the conditions at the sampled points at the time of sampling. If special concerns exist, or the Client has special considerations or requirements, the Client should disclose them so that additional or special investigations may be undertaken which would not otherwise be within the scope of investigations made for the purposes of the Report.
- b) **Reliance on Provided Information:** The evaluation and conclusions contained in the Report have been prepared on the basis of conditions in evidence at the time of site inspections and on the basis of information provided to Thurber. Thurber has relied in good faith upon representations, information and instructions provided by the Client and others concerning the site. Accordingly, Thurber does not accept responsibility for any deficiency, misstatement or inaccuracy contained in the Report as a result of misstatements, omissions, misrepresentations, or fraudulent acts of the Client or other persons providing information relied on by Thurber. Thurber is entitled to rely on such representations, information and instructions and is not required to carry out investigations to determine the truth or accuracy of such representations, information and instructions.
- c) **Design Services:** The Report may form part of design and construction documents for information purposes even though it may have been issued prior to final design being completed. Thurber should be retained to review final design, project plans and related documents prior to construction to confirm that they are consistent with the intent of the Report. Any differences that may exist between the Report's recommendations and the final design detailed in the contract documents should be reported to Thurber immediately so that Thurber can address potential conflicts.
- d) **Construction Services:** During construction Thurber should be retained to provide field reviews. Field reviews consist of performing sufficient and timely observations of encountered conditions in order to confirm and document that the site conditions do not materially differ from those interpreted conditions considered in the preparation of the report. Adequate field reviews are necessary for Thurber to provide letters of assurance, in accordance with the requirements of many regulatory authorities.

6. RELEASE OF POLLUTANTS OR HAZARDOUS SUBSTANCES

Geotechnical engineering and environmental consulting projects often have the potential to encounter pollutants or hazardous substances and the potential to cause the escape, release or dispersal of those substances. Thurber shall have no liability to the Client under any circumstances, for the escape, release or dispersal of pollutants or hazardous substances, unless such pollutants or hazardous substances have been specifically and accurately identified to Thurber by the Client prior to the commencement of Thurber's professional services.

7. INDEPENDENT JUDGEMENTS OF CLIENT

The information, interpretations and conclusions in the Report are based on Thurber's interpretation of conditions revealed through limited investigation conducted within a defined scope of services. Thurber does not accept responsibility for independent conclusions, interpretations, interpolations and/or decisions of the Client, or others who may come into possession of the Report, or any part thereof, which may be based on information contained in the Report. This restriction of liability includes but is not limited to decisions made to develop, purchase or sell land.



Appendix A

Record of Borehole Sheet (Present Investigation)

SYMBOLS, ABBREVIATIONS AND TERMS USED ON RECORDS OF BOREHOLES

1. TEXTURAL CLASSIFICATION OF SOILS

CLASSIFICATION	PARTICLE SIZE	VISUAL IDENTIFICATION
Boulders	Greater than 200mm	same
Cobbles	75 to 200mm	same
Gravel	4.75 to 75mm	5 to 75mm
Sand	0.075 to 4.75mm	Not visible particles to 5mm
Silt	0.002 to 0.075mm	Non-plastic particles, not visible to the naked eye
Clay	Less than 0.002mm	Plastic particles, not visible to the naked eye

2. COARSE GRAIN SOIL DESCRIPTION (50% greater than 0.075mm)

TERMINOLOGY	PROPORTION
Trace or Occasional	Less than 10%
Some	10 to 20%
Adjective (e.g. silty or sandy)	20 to 35%
And (e.g. sand and gravel)	35 to 50%

3. TERMS DESCRIBING CONSISTENCY (COHESIVE SOILS ONLY)

DESCRIPTIVE TERM	UNDRAINED SHEAR STRENGTH (kPa)	APPROXIMATE SPT ⁽¹⁾ 'N' VALUE
Very Soft	12 or less	Less than 2
Soft	12 to 25	2 to 4
Firm	25 to 50	4 to 8
Stiff	50 to 100	8 to 15
Very Stiff	100 to 200	15 to 30
Hard	Greater than 200	Greater than 30

NOTE: Hierarchy of Soil Strength Prediction

- 1) Laboratory Triaxial Testing
- 2) Field Insitu Vane Testing
- 3) Laboratory Vane Testing
- 4) SPT value
- 5) Pocket Penetrometer



4. TERMS DESCRIBING DENSITY (COHESIONLESS SOILS ONLY)

DESCRIPTIVE TERM	SPT "N" VALUE
Very Loose	Less than 4
Loose	4 to 10
Compact	10 to 30
Dense	30 to 50
Very Dense	Greater than 50

5. LEGEND FOR RECORDS OF BOREHOLES

SYMBOLS AND ABBREVIATIONS FOR SAMPLE TYPE	SS Split Spoon Sample	WS Wash Sample	AS Auger (Grab) Sample
	TW Thin Wall Shelby Tube Sample	TP Thin Wall Piston Sample	
	PH Sampler Advanced by Hydraulic Pressure	PM Sampler Advanced by Manual Pressure	
	WH Sampler Advanced by Self Static Weight	RC Rock Core	SC Soil Core

$$\text{Sensitivity} = \frac{\text{Undisturbed Shear Strength}}{\text{Remoulded Shear Strength}}$$

 Water Level
 Shear Strength Determination by Pocket Penetrometer

- (1) SPT 'N' Value Standard Penetration Test 'N' Value – refers to the number of blows from a 63.5kg hammer free falling a height of 0.76m to advance a standard 50 mm outside diameter split spoon sampler for 0.3 m depth into undisturbed ground.
- (2) DCPT Dynamic Cone Penetration Test – Continuous penetration of a 50 mm outside diameter, 60° conical steel point attached to "A" size rods driven by a 63.5 kg hammer free falling a height of 0.76 m. The resistance to cone penetration is the number of hammer blows required for each 0.3 m advance of the conical point into undisturbed ground.

UNIFIED SOILS CLASSIFICATION

MAJOR DIVISIONS		GROUP SYMBOL	TYPICAL DESCRIPTION
COARSE GRAINED SOILS	GRAVEL AND GRAVELLY SOILS	GW	Well-graded gravels or gravel-sand mixtures, little or no fines.
		GP	Poorly-graded gravels or gravel-sand mixtures, little or no fines.
		GM	Silty gravels, gravel-sand-silt mixtures.
		GC	Clayey gravels, gravel-sand-clay mixtures.
	SAND AND SANDY SOILS	SW	Well-graded sands or gravelly sands, little or no fines.
		SP	Poorly-graded sands or gravelly sands, little or no fines.
		SM	Silty sands, sand-silt mixtures.
		SC	Clayey sands, sand-clay mixtures.
FINE GRAINED SOILS	SILTS AND CLAYS $W_L < 50\%$	ML	Inorganic silts and very fine sands, rock flour, silty or clayey fine sands or clayey silts with slight plasticity.
		CL	Inorganic clays of low to medium plasticity, gravelly clays, sandy clays, silty clays, lean clays. ($W_L < 30\%$).
		CI	Inorganic clays of medium plasticity, silty clays. ($30\% < W_L < 50\%$).
		OL	Organic silts and organic silty-clays of low plasticity.
	SILTS AND CLAYS $W_L > 50\%$	MH	Inorganic silts, micaceous or diatomaceous fine sandy or silty soils, elastic silts.
		CH	Inorganic clays of high plasticity, fat clays.
		OH	Organic clays of medium to high plasticity, organic silts.
HIGHLY ORGANIC SOILS		Pt	Peat and other highly organic soils.
CLAY SHALE			
SANDSTONE			
SILTSTONE			
CLAYSTONE			
COAL			

EXPLANATION OF ROCK LOGGING TERMS

<u>ROCK WEATHERING CLASSIFICATION</u>		<u>SYMBOLS</u>	
Fresh (FR)	No visible signs of weathering.		
Fresh Jointed (FJ)	Weathering limited to the surface of major discontinuities.		CLAYSTONE
Slightly Weathered (SW)	Penetrative weathering developed on open discontinuity surfaces, but only slight weathering of rock material.		SILTSTONE
Moderately Weathered (MW)	Weathering extends throughout the rock mass, but the rock material is not friable.		SANDSTONE
Highly Weathered (HW)	Weathering extends throughout the rock mass and the rock is partly friable.		COAL
Completely Weathered (CW)	Rock is wholly decomposed and in a friable condition, but the rock texture and structure are preserved.		Bedrock (general)

<u>DISCONTINUITY SPACING</u>		<u>STRENGTH CLASSIFICATION</u>			
Bedding	Bedding Plane Spacing	Rock Strength	Approximate Uniaxial Compressive Strength		Field Estimation of Hardness*
			(MPa)	(psi)	
Very thickly bedded	Greater than 2m	Extremely Strong	Greater than 250	Greater than 36,000	Specimen can only be chipped with a geological hammer
Thickly bedded	0.6 to 2m				
Medium bedded	0.2 to 0.6m	Very Strong	100-250	15,000 to 36,000	Requires many blows of geological hammer to break
Thinly bedded	60mm to 0.2m	Strong	50-100	7,500 to 15,000	Requires more than one blow of geological hammer to break
Very thinly bedded	20 to 60mm				
Laminated	6 to 20mm	Medium Strong	25.0 to 50.0	3,500 to 7,500	Breaks under single blow of geological hammer.
Thinly Laminated	Less than 6mm				

<u>TERMS</u>		Extremely Weak (Rock)	0.25 to 1.0	35 to 150	Indented by thumbnail
Total Core Recovery: (TCR)	Core recovered as a percentage of total core run length.				
Solid Core Recovery: (SCR)	Percent Ratio of solid core of full cylindrical shape recovered. Expressed with respect to the total length of core run.				
Rock Quality Designation: (RQD)	Total length of sound core recovered in pieces 0.1m in length or larger as a percentage of total core run length.				
Uniaxial Compressive Strength (UCS)	Axial stress required to break the specimen				
Fracture Index: (FI)	Frequency of natural fractures per 0.3m of core run.				

RECORD OF BOREHOLE No HV-01

1 OF 2

METRIC

W.P. W.O. 16-20004 LOCATION Hidden Valley Culvert; MTM NAD83-10: N 4 796 352.3 E 275 032.3 ORIGINATED BY FK
 DIST Central HWY 403 BOREHOLE TYPE Solid Stem Augers/HQ Coring COMPILED BY MC
 DATUM Geodetic DATE 2022.09.25 - 2022.09.25 LATITUDE 43.306463 LONGITUDE -79.866929 CHECKED BY RPR

SOIL PROFILE			SAMPLES			GROUND WATER CONDITIONS	ELEVATION SCALE	DYNAMIC CONE PENETRATION RESISTANCE PLOT				UNIT WEIGHT γ kN/m ³	REMARKS & GRAIN SIZE DISTRIBUTION (%)							
ELEV DEPTH	DESCRIPTION	STRAT PLOT	NUMBER	TYPE	"N" VALUES			SHEAR STRENGTH kPa												
107.3	GROUND SURFACE							20	40	60	80	100								
0.0	ASPHALT: (175mm)																			
0.2	SAND and GRAVEL, trace to some silt and clay Compact Grey Moist (FILL)		1	SS	24		107													
106.5																				
0.8																				
	SAND and SILT, trace clay Compact Brown Moist (FILL)		2	SS	22		106													
			3	SS	17															
104.9							105													
2.4	Very Dense		4	SS	65															
			5	SS	60		104													
103.1							103													
4.2																				
	Compact Wet		6	SS	29		102													
			7	SS	26		101													
	Silty clay pockets at 6.7m, occasional cobbles																			
100.1							100													
7.2	Silty SAND, trace gravel, trace clay Dense Brown to Grey Wet (FILL)		8	SS	39															
	Dark brown to black sand layer at 7.9m						99													
			9	SS	35		98													

Continued Next Page

+³, ×³: Numbers refer to
Sensitivity

20
15
10

(%) STRAIN AT FAILURE

METRIC

[illegible]

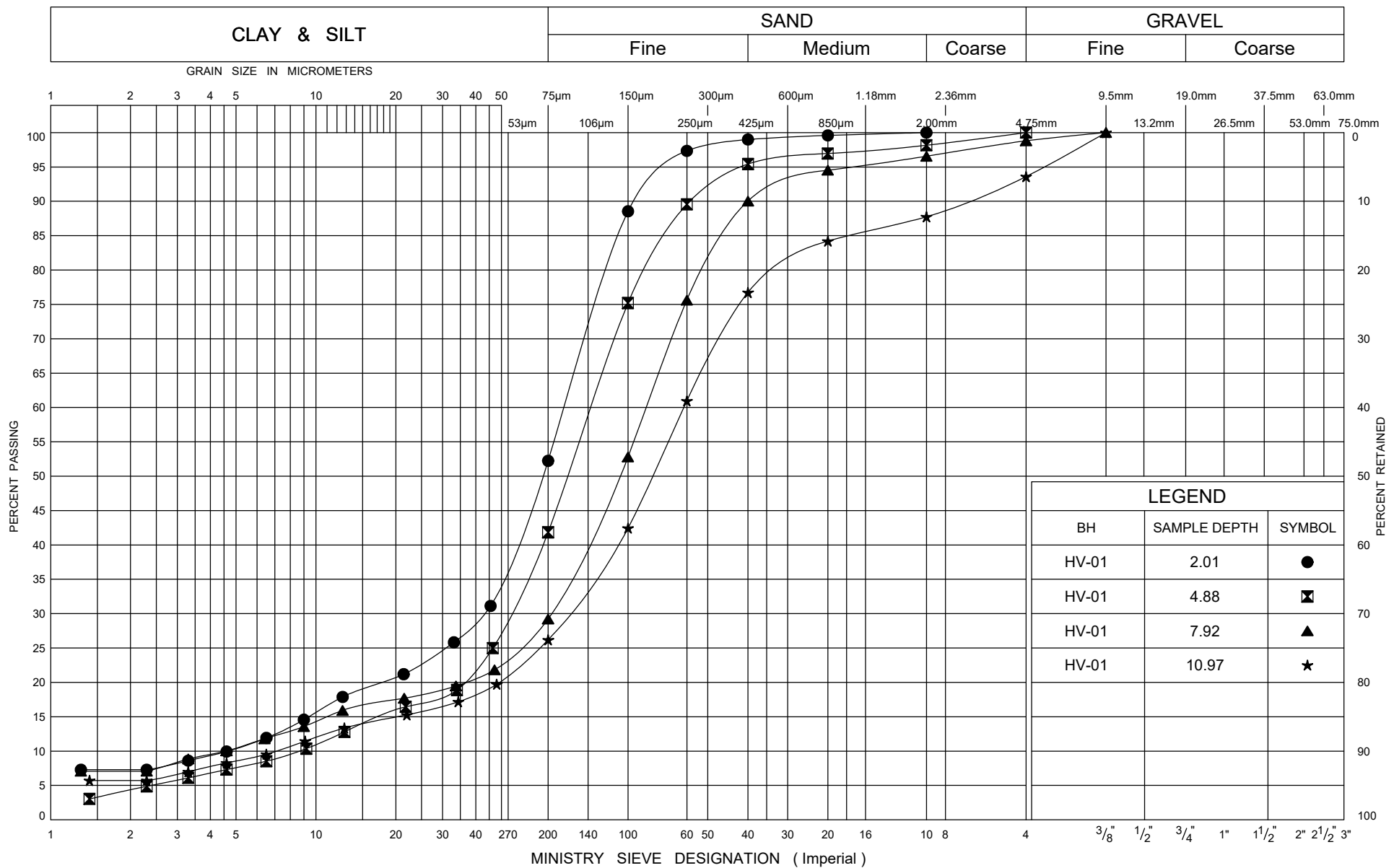
ONTMT4S2 2020LIBRARY(MTO) - COPY.GLB MTO-25963.GPJ 12/19/22

+³, ×³: Numbers refer to Sensitivity



Appendix B

Geotechnical and Analytical Laboratory Test Results (Present Investigation)





THURBER ENGINEERING LTD.

POINT LOAD TEST SHEET
ASTM D5731-08

Job No: 25963 - Phase 2
Project Name: Hwy 403 & Hwy 6 - Hidden Valley
Core Size: HQ BH No : HV-01

Date Drilled: 25-Sep-22
Date Tested: 30-Sep-22
Tester: BS
Client: AECOM

Test No.	Run No.	Depth (m)	Axial or Diametral	Gauge (MPa)	Diameter (mm)	Length (mm)	$I_{s(50)}$ (MPa)	UCS (MPa)	Rock Type	Rock Strength (after Hoek & Brown, 1997)
1	Run 1	15.4	A	3.9	62.7	63.7	0.9	20.5	Shale	Weak
2	Run 1	15.7	A	3.6	62.9	66.5	0.8	18.0	Shale	Weak
3	Run 1	16.4	A	3.2	63.0	66.0	0.7	16.3	Shale	Weak
4	Run 2	16.8	A	2.2	62.7	62.0	0.5	11.6	Shale	Weak
5	Run 2	17.2	A	3.3	63.0	64.8	0.7	17.0	Shale	Weak
6	Run 3	17.6	A	7.3	62.1	65.8	1.6	37.8	Shale	Medium Strong
7	Run 3	18.0	A	7.8	63.1	63.3	1.7	41.1	Shale	Medium Strong
8	Run 3	18.3	A	7.3	63.4	64.8	1.6	37.3	Shale	Medium Strong
9	Run 3	18.7	A	6.7	63.2	63.7	1.5	35.1	Shale	Medium Strong
10										
11										
12										
13										
14										
15										
16										
17										
18										
19										
20										
21										
22										
23										
24										
25										
26										
27										
28										
29										
30										
31										
32										
33										
34										
35										

- * It is ideal to perform axial test on core specimens with D/L ratio of 1.1 ± 0.1
Long pieces of core can be tested diametrically to produce suitable lengths for axial testing
- * Diametral Test should have $0.7 \times D$ on either side of test point.
- * Correlation factor to obtain UCS values is 24.

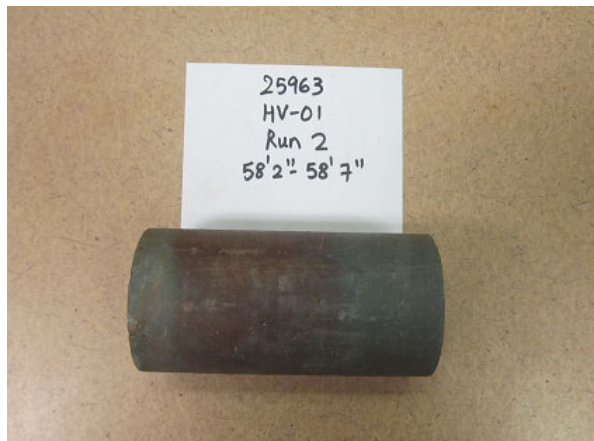
UNCONFINED COMPRESSION TEST REPORT

ASTM D7012-14

CLIENT:	AECOM	FILE NUMBER:	25963
PROJECT NAME:	HWY 403 & 6 2016-E-2017 HIDDEN VALLEY CULVERT	REPORT DATE:	2-Nov-22
BOREHOLE No.:	HV-01	TEST DATE:	28-Oct-22
SAMPLE No.:	Run 2		
SAMPLE DEPTH:	17.73- 17.86 m		
DESCRIPTION:	Shale		

Avg. Height (cm):	12.0	Weight (g):	973.7
Avg. Diameter (cm):	6.3	Wet Density (kg/m ³):	2,603
H. to Dia. Ratio**:	1.9:1	Dry Density (kg/m ³):	2,506
Cross Sectional Area (cm ²):	31.17	Moisture Content* (%):	3.9
Sample Volume (cm ³):	374.07		

ORIGINAL SPECIMEN



FRACTURED SPECIMEN



AVG. RATE OF STRAIN TO FAILURE:	0.250 MPa/s
MAXIMUM COMPRESSIVE LOAD:	49.6 kN
UNCONFINED COMPRESSIVE STRENGTH:	15.9 MPa

Note: * The moisture content was obtained before the test.
 ** Dimensions of Specimen do not conform to ASTM D 4543-04.

TEST DONE BY: GF
 REVIEWED BY: WM

HV-01 Run 2

UNCONFINED COMPRESSION TEST REPORT

ASTM D7012-14

CLIENT:	AECOM	FILE NUMBER:	25963
PROJECT NAME:	HWY 403 & 6 2016-E-2017 HIDDEN VALLEY CULVERT	REPORT DATE:	2-Nov-22
BOREHOLE No.:	HV-01	TEST DATE:	28-Oct-22
SAMPLE No.:	Run 3		
SAMPLE DEPTH:	16.89 17.04 m		
DESCRIPTION:	Shale		

Avg. Height (cm):	12.6	Weight (g):	1036.0
Avg. Diameter (cm):	6.3	Wet Density (kg/m ³):	2,638
H. to Dia. Ratio**:	2:1	Dry Density (kg/m ³):	2,553
Cross Sectional Area (cm ²):	31.17	Moisture Content* (%):	3.3
Sample Volume (cm ³):	392.77		

ORIGINAL SPECIMEN



FRACTURED SPECIMEN



AVG. RATE OF STRAIN TO FAILURE:	0.250 MPa/s
MAXIMUM COMPRESSIVE LOAD:	77.1 kN
UNCONFINED COMPRESSIVE STRENGTH:	24.7 MPa

Note: * The moisture content was obtained before the test.
 ** Dimensions of Specimen conform to ASTM D 4543-04.

TEST DONE BY: GF
 REVIEWED BY: WM

HV-01 Run 3



FINAL REPORT

CA40390-SEP22 R1

25963. Hwy 403 & Hidden Valley Rd., Burlington/Hamilton ON

Prepared for

Thurber Engineering Ltd.

First Page

CLIENT DETAILS

Client Thurber Engineering Ltd.

Address 103, 2010 Winston Park Drive
Oakville, ON
L6H 5R7, Canada

Contact Rocio Reyna

Telephone 905-829-8666 x 263

Facsimile

Email rreyna@thurber.ca

Project 25963. Hwy 403 & Hidden Valley Rd., Burlington/Hamilton ON

Order Number

Samples Soil (2)

LABORATORY DETAILS

Project Specialist Maarit Wolfe, Hon.B.Sc

Laboratory SGS Canada Inc.

Address 185 Concession St., Lakefield ON, K0L 2H0

Telephone 705-652-2000

Facsimile 705-652-6365

Email Maarit.Wolfe@sgs.com

SGS Reference CA40390-SEP22

Received 09/30/2022

Approved 10/21/2022

Report Number CA40390-SEP22 R1

Date Reported 10/21/2022

COMMENTS

Temperature of Sample upon Receipt: 9 degrees C

Cooling Agent Present: Yes

Custody Seal Present: Yes

Chain of Custody Number: n/a

Corrosivity Index is based on the American Water Works Corrosivity Scale according to AWWA C-105. An index greater than 10 indicates the soil matrix may be corrosive to cast iron alloys.

SIGNATORIES

Maarit Wolfe, Hon.B.Sc

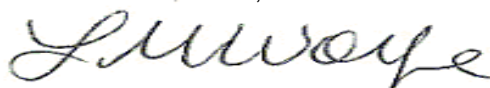




TABLE OF CONTENTS

First Page..... 1

Index..... 2

Results..... 3

QC Summary..... 4-5

Legend..... 6

Annexes..... 7



FINAL REPORT

CA40390-SEP22 R1

Client: Thurber Engineering Ltd.

Project: 25963. Hwy 403 & Hidden Valley Rd., Burlington/Hamilton ON

Project Manager: Rocío Reyna

Samplers: FK

MATRIX: SOIL

Sample Number	5	6
Sample Name	BH HV-01, SS#3, 5.5'-7.5'	BH HV-01, SS#9 30'-32'
Sample Matrix	Soil	Soil
Sample Date	25/09/2022	25/09/2022

Parameter	Units	RL		Result	Result
Corrosivity Index					
Corrosivity Index	none	1		14	4
Soil Redox Potential	mV	no		266	351
Sulphide (Na ₂ CO ₃)	%	0.04		< 0.04	< 0.04
pH	pH Units	0.05		9.17	8.75
Resistivity (calculated)	ohms.cm	-9999		574	2900
General Chemistry					
Conductivity	uS/cm	2		1740	345
Metals and Inorganics					
Moisture Content	%	0.1		9.9	10.4
Sulphate	µg/g	0.4		62	28
Other (ORP)					
Chloride	µg/g	0.4		880	200



FINAL REPORT

CA40390-SEP22 R1

QC SUMMARY

Anions by IC
Method: EPA300/MA300-Ions1.3 | Internal ref.: ME-CA-IENVIIC-LAK-AN-001

Parameter	QC batch Reference	Units	RL	Method Blank	Duplicate		LCS/Spike Blank			Matrix Spike / Ref.		
					RPD	AC (%)	Spike Recovery (%)	Recovery Limits (%)		Spike Recovery (%)	Recovery Limits (%)	
								Low	High		Low	High
Chloride	DIO0055-OCT22	µg/g	0.4	<0.4	1	35	103	80	120	ND	75	125
Sulphate	DIO0055-OCT22	µg/g	0.4	<0.4	0	35	94	80	120	97	75	125

Carbon/Sulphur
Method: ASTM E1915-07A | Internal ref.: ME-CA-IENVIARD-LAK-AN-020

Parameter	QC batch Reference	Units	RL	Method Blank	Duplicate		LCS/Spike Blank			Matrix Spike / Ref.		
					RPD	AC (%)	Spike Recovery (%)	Recovery Limits (%)		Spike Recovery (%)	Recovery Limits (%)	
								Low	High		Low	High
Sulphide (Na2CO3)	ECS0012-OCT22	%	0.04	< 0.04	ND	20	116	80	120			

Conductivity
Method: SM 2510 | Internal ref.: ME-CA-IENVIEWL-LAK-AN-006

Parameter	QC batch Reference	Units	RL	Method Blank	Duplicate		LCS/Spike Blank			Matrix Spike / Ref.		
					RPD	AC (%)	Spike Recovery (%)	Recovery Limits (%)		Spike Recovery (%)	Recovery Limits (%)	
								Low	High		Low	High
Conductivity	EWL0031-OCT22	uS/cm	2	< 2	1	20	101	90	110	NA		



QC SUMMARY

pH
Method: SM 4500 | Internal ref.: ME-CA-|ENVIEWL-LAK-AN-001

Parameter	QC batch Reference	Units	RL	Method Blank	Duplicate		LCS/Spike Blank			Matrix Spike / Ref.		
					RPD	AC (%)	Spike Recovery (%)	Recovery Limits (%)		Spike Recovery (%)	Recovery Limits (%)	
								Low	High		Low	High
pH	EWL0031-OCT22	pH Units	0.05	NA	0		100			NA		

Method Blank: a blank matrix that is carried through the entire analytical procedure. Used to assess laboratory contamination.

Duplicate: Paired analysis of a separate portion of the same sample that is carried through the entire analytical procedure. Used to evaluate measurement precision.

LCS/Spike Blank: Laboratory control sample or spike blank refer to a blank matrix to which a known amount of analyte has been added. Used to evaluate analyte recovery and laboratory accuracy without sample matrix effects.

Matrix Spike: A sample to which a known amount of the analyte of interest has been added. Used to evaluate laboratory accuracy with sample matrix effects.

Reference Material: a material or substance matrix matched to the samples that contains a known amount of the analyte of interest. A reference material may be used in place of a matrix spike.

RL: Reporting limit

RPD: Relative percent difference

AC: Acceptance criteria

Multielement Scan Qualifier: as the number of analytes in a scan increases, so does the chance of a limit exceedance by random chance as opposed to a real method problem. Thus, in multielement scans, for the LCS and matrix spike, up to 10% of the analytes may exceed the quoted limits by up to 10% absolute and the spike is considered acceptable.

Duplicate Qualifier: for duplicates as the measured result approaches the RL, the uncertainty associated with the value increases dramatically, thus duplicate acceptance limits apply only where the average of the two duplicates is greater than five times the RL.

Matrix Spike Qualifier: for matrix spikes, as the concentration of the native analyte increases, the uncertainty of the matrix spike recovery increases. Thus, the matrix spike acceptance limits apply only when the concentration of the matrix spike is greater than or equal to the concentration of the native analyte.

LEGEND

FOOTNOTES

NSS Insufficient sample for analysis.

RL Reporting Limit.

↑ Reporting limit raised.

↓ Reporting limit lowered.

NA The sample was not analysed for this analyte

ND Non Detect

Results relate only to the sample tested.

Data reported represent the sample as submitted to SGS. Solid samples expressed on a dry weight basis.

"Temperature Upon Receipt" is representative of the whole shipment and may not reflect the temperature of individual samples.

Analysis conducted on samples submitted pursuant to or as part of Reg. 153/04, are in accordance to the "Protocol for Analytical Methods Used in the Assessment of Properties under Part XV.1 of the Environmental Protection Act and Excess Soil Quality" published by the Ministry and dated March 9, 2004 as amended.

SGS provides criteria information (such as regulatory or guideline limits and summary of limit exceedances) as a service. Every attempt is made to ensure the criteria information in this report is accurate and current, however, it is not guaranteed. Comparison to the most current criteria is the responsibility of the client and SGS assumes no responsibility for the accuracy of the criteria levels indicated.

SGS Canada Inc. statement of conformity decision rule does not consider uncertainty when analytical results are compared to a specified standard or regulation.

This document is issued, on the Client's behalf, by the Company under its General Conditions of Service available on request and accessible at http://www.sgs.com/terms_and_conditions.htm.

The Client's attention is drawn to the limitation of liability, indemnification and jurisdiction issues defined therein. Any other holder of this document is advised that information contained hereon reflects the Company's findings at the time of its intervention only and within the limits of Client's instructions, if any. The Company's sole responsibility is to its Client and this document does not exonerate parties to a transaction from exercising all their rights and obligations under the transaction documents. Reproduction of this analytical report in full or in part is prohibited.

This report supersedes all previous versions.

-- End of Analytical Report --



Environment, Health & Safety

Request for Laboratory Services and CHAIN OF CUSTODY

- Lakefield: 185 Concession St., Lakefield, ON K0L 2H0 Phone: 705-652-2000 Fax: 705-652-6365 Web: www.sgs.com/environment
- London: 657 Consortium Court, London, ON, N6E 2S8 Phone: 519-672-4500 Toll Free: 877-848-8060 Fax: 519-672-0361

No: _____
Page 1 of 1

Laboratory Information Section - Lab use only

Received By: EO
Received Date (mm/dd/yy): 9/28/22
Received Time: 1530

Received By (signature): [Signature]
Custody Seal Present: ☒
Custody Seal Intact: ☒

Cooling Agent Present: ☒
Temperature Upon Receipt (°C): 25.3

LAB LIMS #: PH40390-8022

REPORT INFORMATION

Company: Thurber Eng.
Contact: Rocio Palomeque Reyna
Address: 103-2010 Winsion Park Drive,
Oakville ON L6H 5R7
Phone: 905-829-8666
Email: treyna@thurber.ca

INVOICE INFORMATION

☒ (same as Report Information)
Company: _____
Contact: _____
Address: _____
Phone: _____
Email: _____

PROJECT INFORMATION

Quotation #: _____ P.O. #: _____
Project #: 25963 Site Location/ID: Hwy 403& Hidden Valley Rd., Burlington/Hamilton, ON
TURNAROUND TIME (TAT) REQUIRED
☒ Regular TAT (5-7days)
TAT's are quoted in business days (exclude statutory holidays & weekends).
Samples received after 6pm or on weekends: TAT begins next business day
RUSH TAT (Additional Charges May Apply): ☐ 1 Day ☐ 2 Days ☐ 3 Days ☐ 4 Days
PLEASE CONFIRM RUSH FEASIBILITY WITH SGS REPRESENTATIVE PRIOR TO SUBMISSION
Specify Due Date: _____ Rush Confirmation ID: _____

REGULATIONS

Regulation 153/04:

Table 1 ☐ R/P/I ☐ Soil Texture: _____
Table 2 ☐ I/C/C ☐ Coarse _____
Table 3 ☐ A/O ☐ Medium _____
Table ☐ Fine _____

Other Regulations:

Reg 347/558 (3 Day min TAT)
P/MO ☐ I/MER ☐
C/CME ☐ Other: _____
MISA ☐

Sewer By-Law:

Sanitary ☐
Storm ☐
Municipality: _____

RECORD OF SITE CONDITION (RSC)

☐ YES ☐ NO

SAMPLE IDENTIFICATION

1	BH HV-01, SS#3, 5.5'-7.5'	9/25/22	1	SOIL
2	BH HV-01, SS#9 30'-32'	9/25/22	1	SOIL
3				
4				
5				
6				
7				
8				
9				
10				
11				
12				

Observations/Comments/Special Instructions

Field Filtered (Y/N)

Metals & Inorganics

PAH ☐ ABN ☐ SVOC(all) ☐

PCB Total ☐ Aroclor ☐

PHC F1-F4 ☐ VOC ☐

BTEX ☐ BTEX/F1 ☐ F2-F4 ☐

VOC ☐ BTEX ☐ THM ☐

Pesticides OC ☐ OP ☐

TCLP M&I ☐ VOC ☐ PCB ☐

B(a)P ☐ ABN ☐ Ignit. ☐

Water Pkg Gen. ☐ Ext. ☐

Sewer Use: _____

ORGANIC CONTENT

CORROSIVITY

ANALYSIS REQUESTED

NOTE: DRINKING (POTABLE) WATER SAMPLES FOR HUMAN CONSUMPTION MUST BE SUBMITTED WITH SGS DRINKING WATER CHAIN OF CUSTODY

COMMENTS:

Sampled By (NAME): FK

Signature: _____

Date: 09/30/22

(mm/dd/yy)

Pink Copy - Client

Relinquished By (NAME):

Signature: _____

Date: _____

(mm/dd/yy)

Yellow & White Copy - SGS

Revision # 1.1

Date of Issue: 04 April, 2018



Appendix C

Record of Borehole Sheets and Borehole Plan (Geocres/Previous investigation)

Order No.: 5-500-505/55/T-93 RACEY, MACCALLUM AND ASSOCIATES

LIMITED

M. CHEVRIER
Driller

Hole Begun 10/6/55

Foundation Engineering Division

Hole Ended 10/6/55

Engineering Data Sheet for Borehole: N^o 1

Helper

Job Name: HIDDEN VALLEY BRIDGE

P.E.M.M.

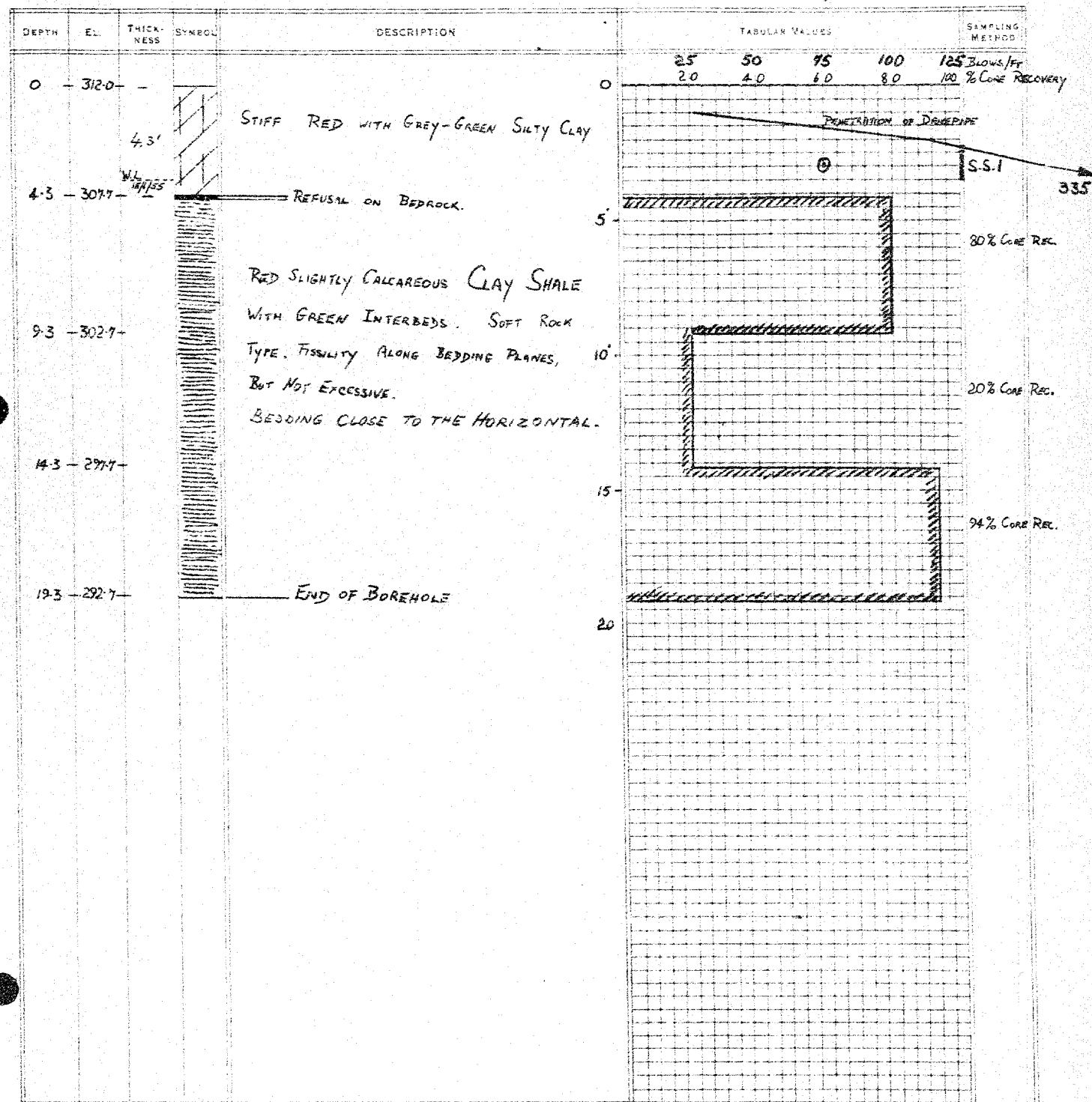
Job Located:

Checked by

Hole Located: AS SHOWN ON ATTACHED SKETCH PLAN.

Hole Elevation: 312.0 Datum:

11 Day 7 Month 55 Year



Order No.: 5502-505/55/T-93 RACEY, MacCALLUM AND ASSOCIATES
LIMITEDM. CHEVRIER
DrillerHole Begun 11/6/55

Foundation Engineering Division

Hole Ended 11/6/55Engineering Data Sheet for Borehole: N° 2

Helper

Job Name:

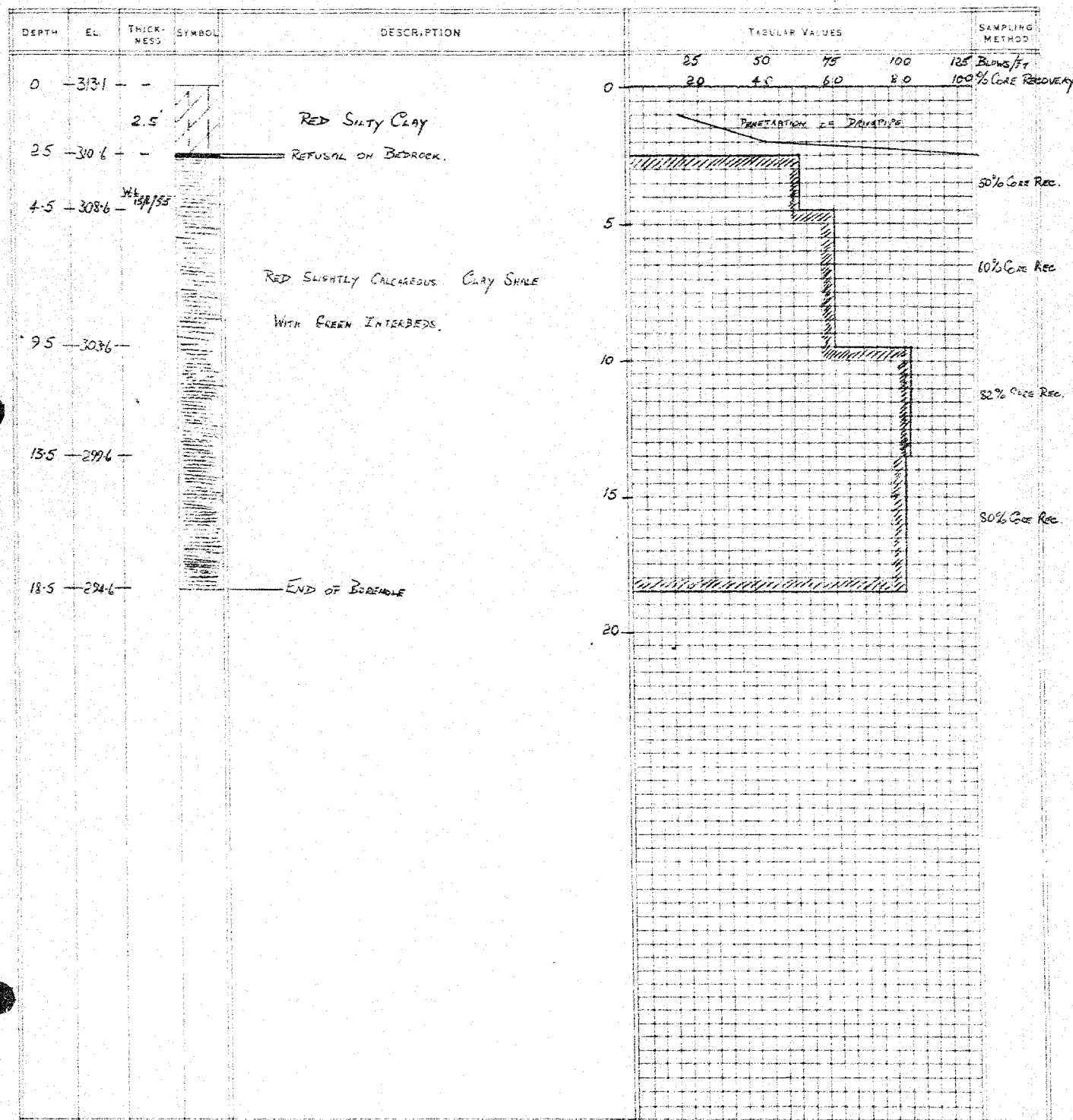
P.E.M.M.

Job Located:

Checked by

Hole Located: AS SHOWN ON ATTACHED SKETCH PLANHole Elevation: 313.1

Datum:

11 7 55
Day Month Year

Order No. 5-500-503/55/T-93 RACEY, MACCALLUM AND ASSOCIATES

LIMITED

M. CHEVRIER
DrillerHole Begun 13/6/55

Foundation Engineering Division

Hole Ended 13/6/55Engineering Data Sheet for Borehole: 1125

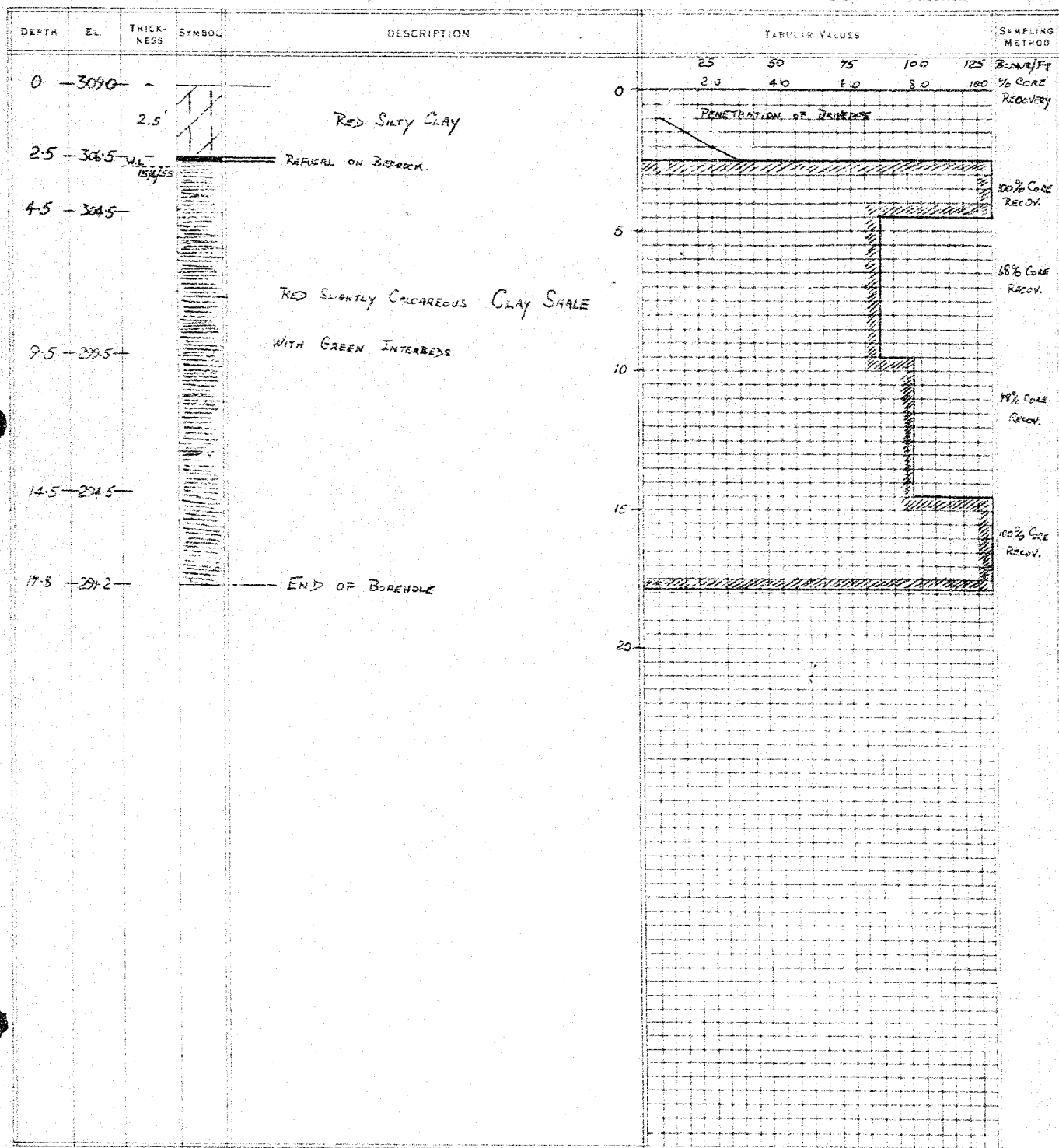
Helper

Job Name:

P.E.M.M.

Job Located:

Checked by

Hole Located: As SHOWN ON ATTACHED SKETCH PLAN.Hole Elevation: 302.0 Datum:11 7 55
Day Month Year

Order No. S-500-505/5/T-93 RACEY, MacCALLUM AND ASSOCIATES
LIMITEDM. CHEVRIER
DrillerHole Begun 13/4/55

Foundation Engineering Division

Hole Ended 14/4/55Engineering Data Sheet for Borehole: N^o 4

Helper

Job Name:

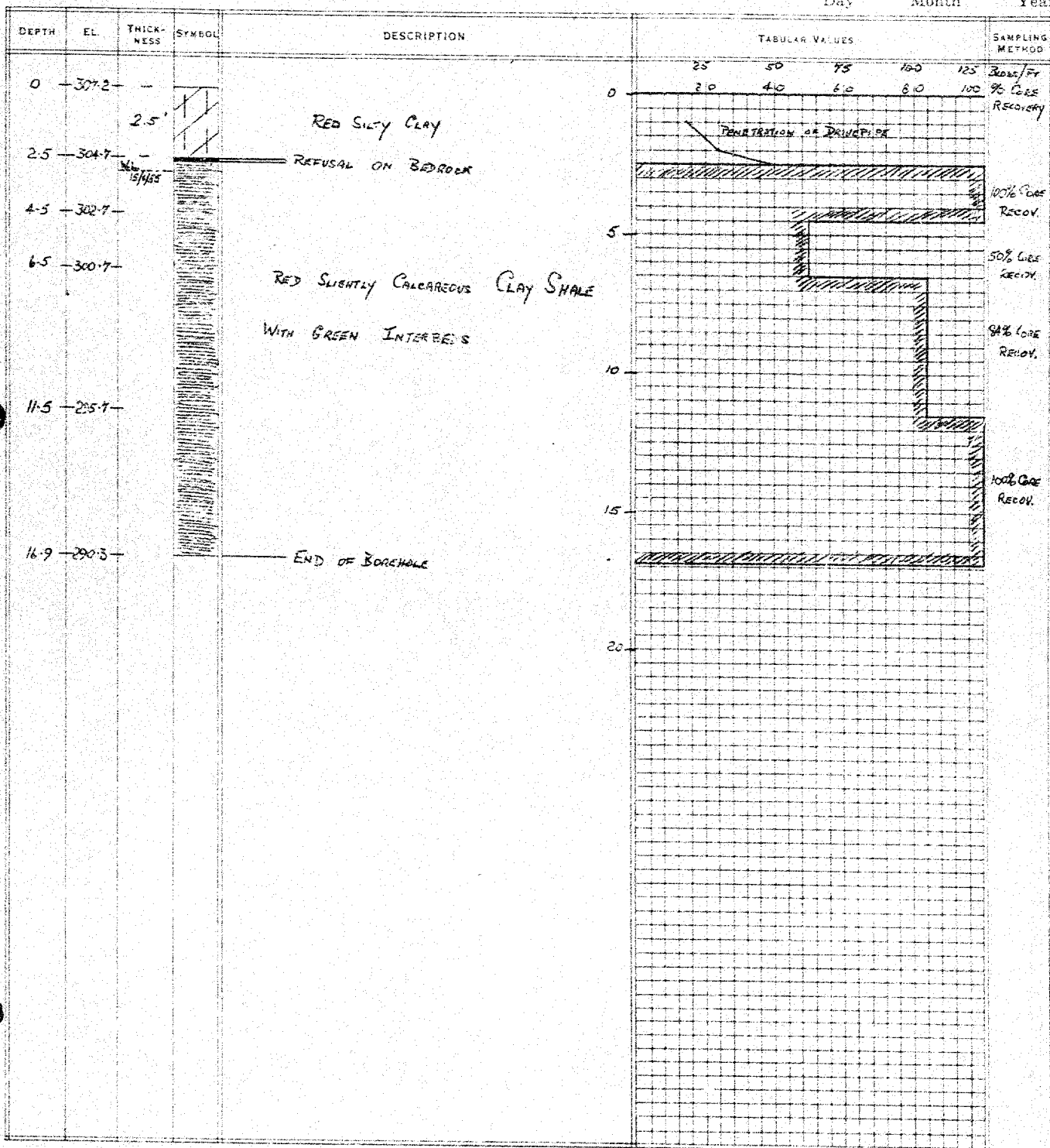
P.E.M.M.

Job Located:

Checked by

Hole Located: As show on ATTACHED SKETCH PLANHole Elevation: 307.2 Datum:

11 Day 7 Month 55 Year



Order No. 5-506-SU/55/T-93 RACEY, MACCALLUM AND ASSOCIATES

LIMITED

M. CHEVRIER
DrillerHole Begun 14/6/55

Foundation Engineering Division

Hole Ended 14/6/55Engineering Data Sheet for Borehole: N° 5

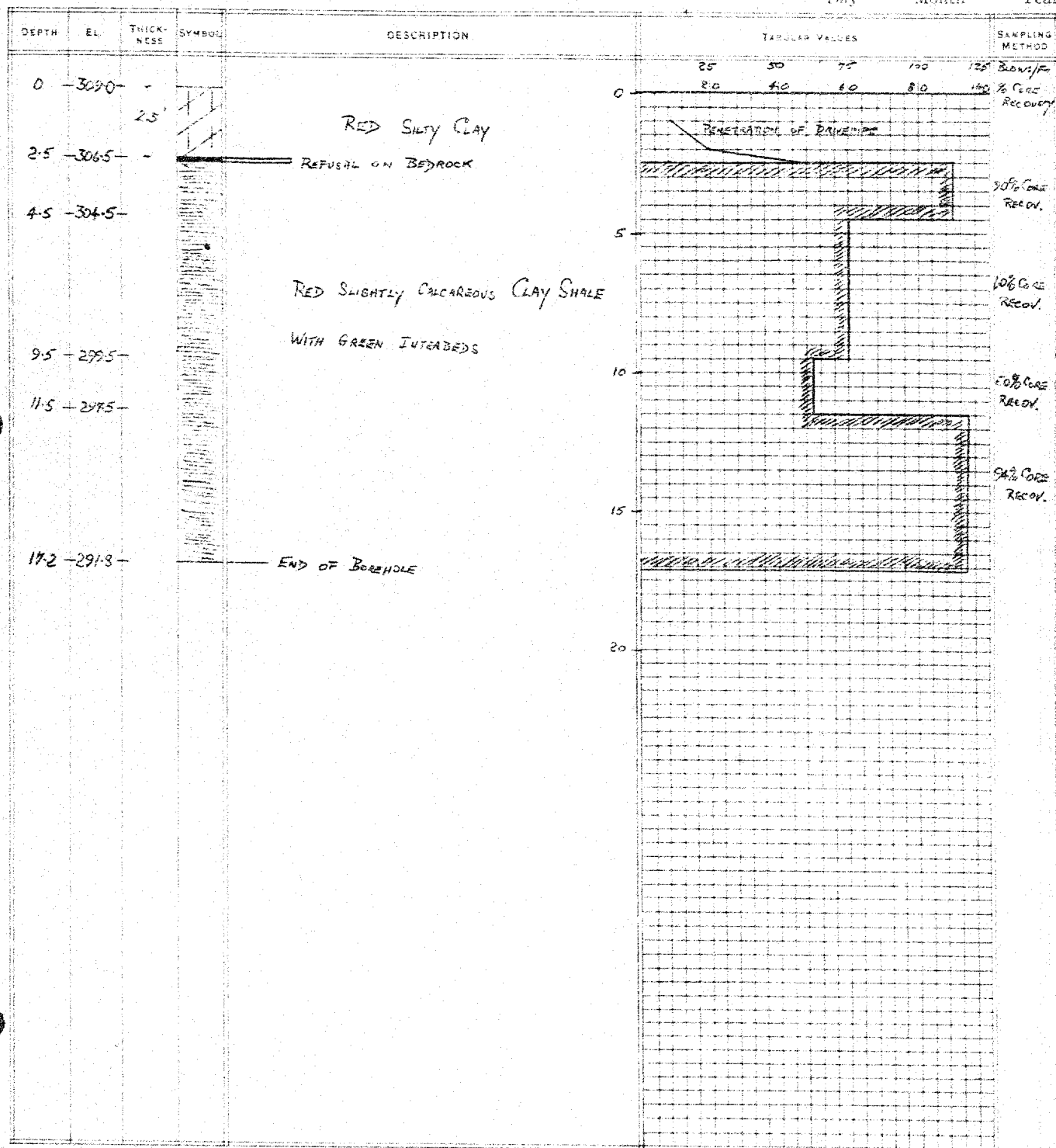
Helper

Job Name:

P.E.M.M.

Job Located:

Checked by

Hole Located: As shown on attached sketch planHole Elevation: 302.0 Datum:12
Day7
Month55
Year

Order No.: S-500-505/55/T-93 RACEY, MACCALLUM AND ASSOCIATES
LIMITEDM. C. NEYRER
DrillerHole Begun 12/4/55

Foundation Engineering Division

Hole Ended 15/4/55Engineering Data Sheet for Borehole: NB 6

Helper

Job Name:

Job Located:

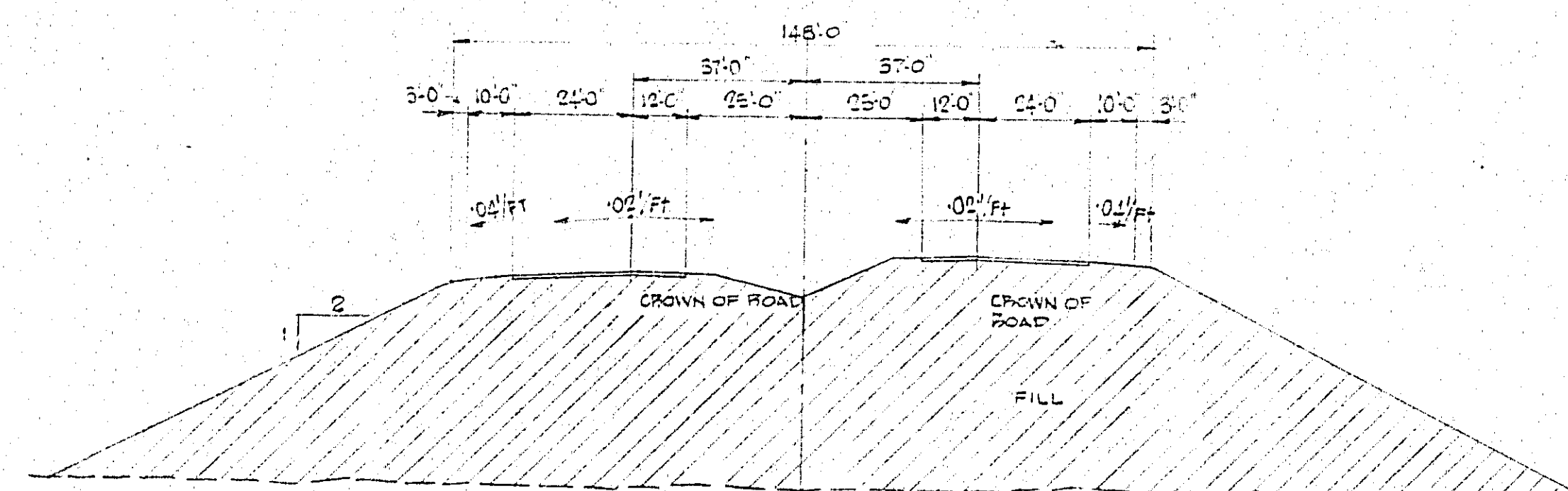
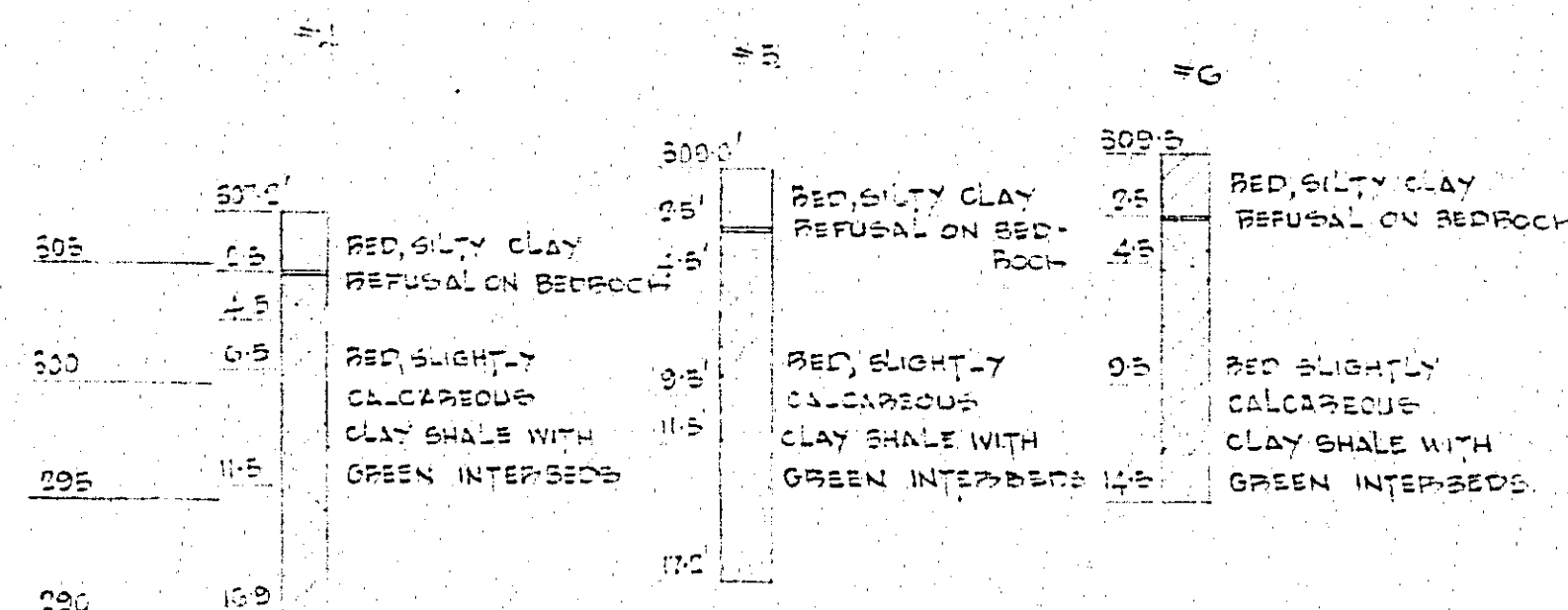
Hole Located: As shown on attached sketch planHole Elevation: 309.5 Datum:P.E.M.M.
Checked by

12 Day 7 Month 55 Year

DEPTH	EL.	THICK- NESS	SYMBOL	DESCRIPTION	TABULAR VALUES	SAMPLING METHOD
0	309.5	-			25 30 75 100	17.5' BRAND/FT
		2.5		RED Silty Clay	20 4.0 1.0 8.0	100% Core Recovered
2.5	307.0	-		REFUSAL OF BED ROCK		
4.5	305.0	-				42% Core RECOV.
				RED SLIGHTLY CALCAREOUS CLAY SHALE		16.5% CORE RECOV.
9.5	300.0	-		WITH GREEN INTERBEDS		40% CORE RECOV.
14.5	296.0	-		END OF BOREHOLE		

ENGINEERS ARE: EAGER, MACGILLIVRAY & ASSOCIATES LTD - JUNE 1988
ENGINEERS ARE FOR GENERAL INFORMATION ONLY, AND ARE NOT
GUARANTEED BY THE DEPARTMENT. THE COMPLETE SOIL INVESTIGATION
REPORT NR BA-42 MAY BE SEEN AT THE BRIDGE OFFICE DOWNSVIEW.
THE DEPARTMENT DOES NOT GUARANTEE THE ACCURACY OF THIS
REPORT NOR THE ABRIDGED VERSION SHOWN HERE.
LEVEL OF EXISTING GROUND & PROFILE OF CONTROLLED ACCESS.
HIGHWAY TAKEN FROM D.H.O. PLAN E-2935-1, DATED AUGUST 5, 1980.
MAXIMUM ALLOWABLE SOIL PRESSURE FOR FOOTINGS = $\frac{1}{4}$ TONS/50 sq. ft.

#1	#2	#3
310	305	3000
305	300	2950
300	295	2900
295	290	2850
290	285	2800
285	280	2750
280	275	2700
275	270	2650
270	265	2600
265	260	2550
260	255	2500
255	250	2450
250	245	2400
245	240	2350
240	235	2300
235	230	2250
230	225	2200
225	220	2150
220	215	2100
215	210	2050
210	205	2000
205	200	1950
200	195	1900
195	190	1850
190	185	1800
185	180	1750
180	175	1700
175	170	1650
170	165	1600
165	160	1550
160	155	1500
155	150	1450
150	145	1400
145	140	1350
140	135	1300
135	130	1250
130	125	1200
125	120	1150
120	115	1100
115	110	1050
110	105	1000
105	100	950
100	95	900
95	90	850
90	85	800
85	80	750
80	75	700
75	70	650
70	65	600
65	60	550
60	55	500
55	50	450
50	45	400
45	40	350
40	35	300
35	30	250
30	25	200
25	20	150
20	15	100
15	10	50
10	5	0



TYPICAL CROSS-SECTION
THROUGH FILL NEAR STRUCTURE
SCALE 30' TO 1"

REINFORCING

D-3636-1 SITE PLAN

D-3636-2 PLAN, SECTION & MISC. DETAILS

D-3636-3 FTG. PLAN, REINFR. & MISC. DETAILS

D-3636-4 PANEL 'A' INTRADOS REINF.

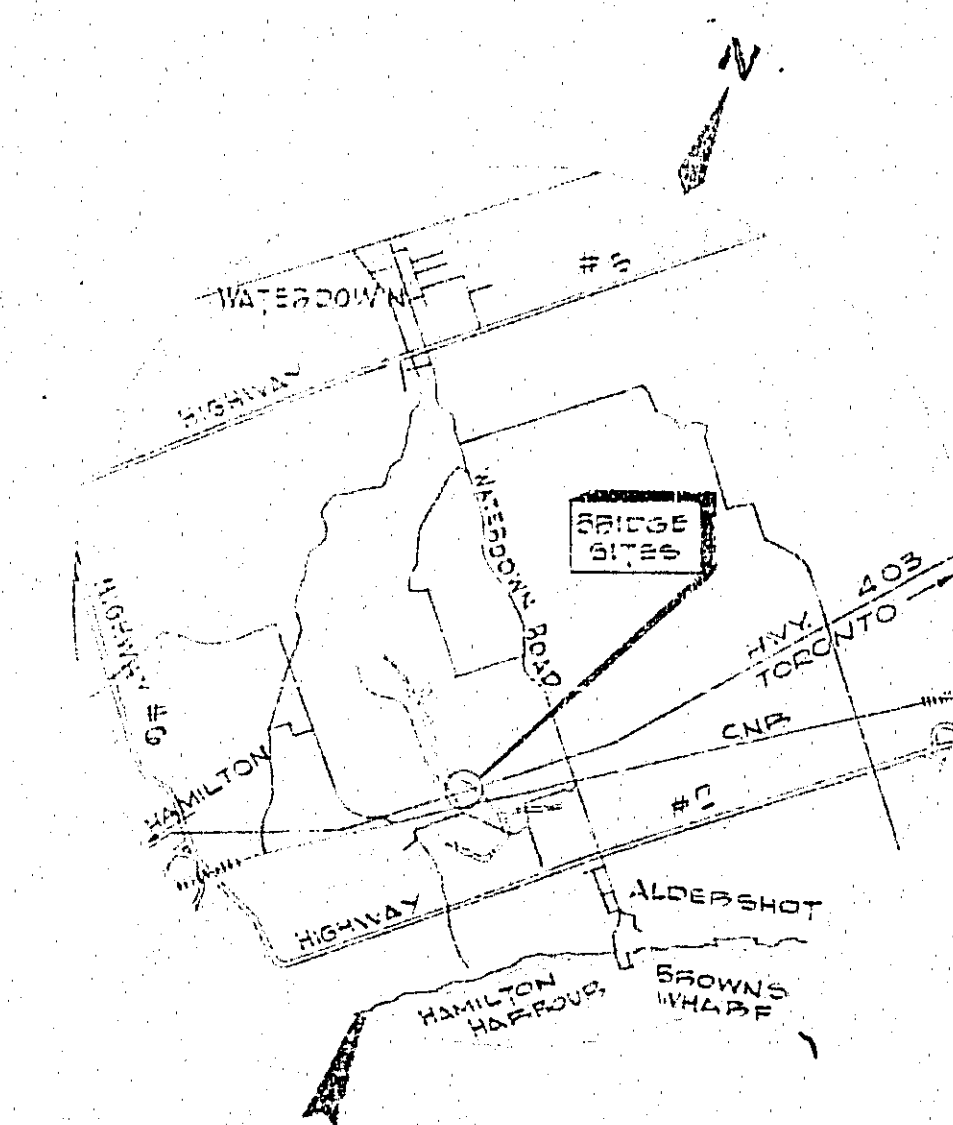
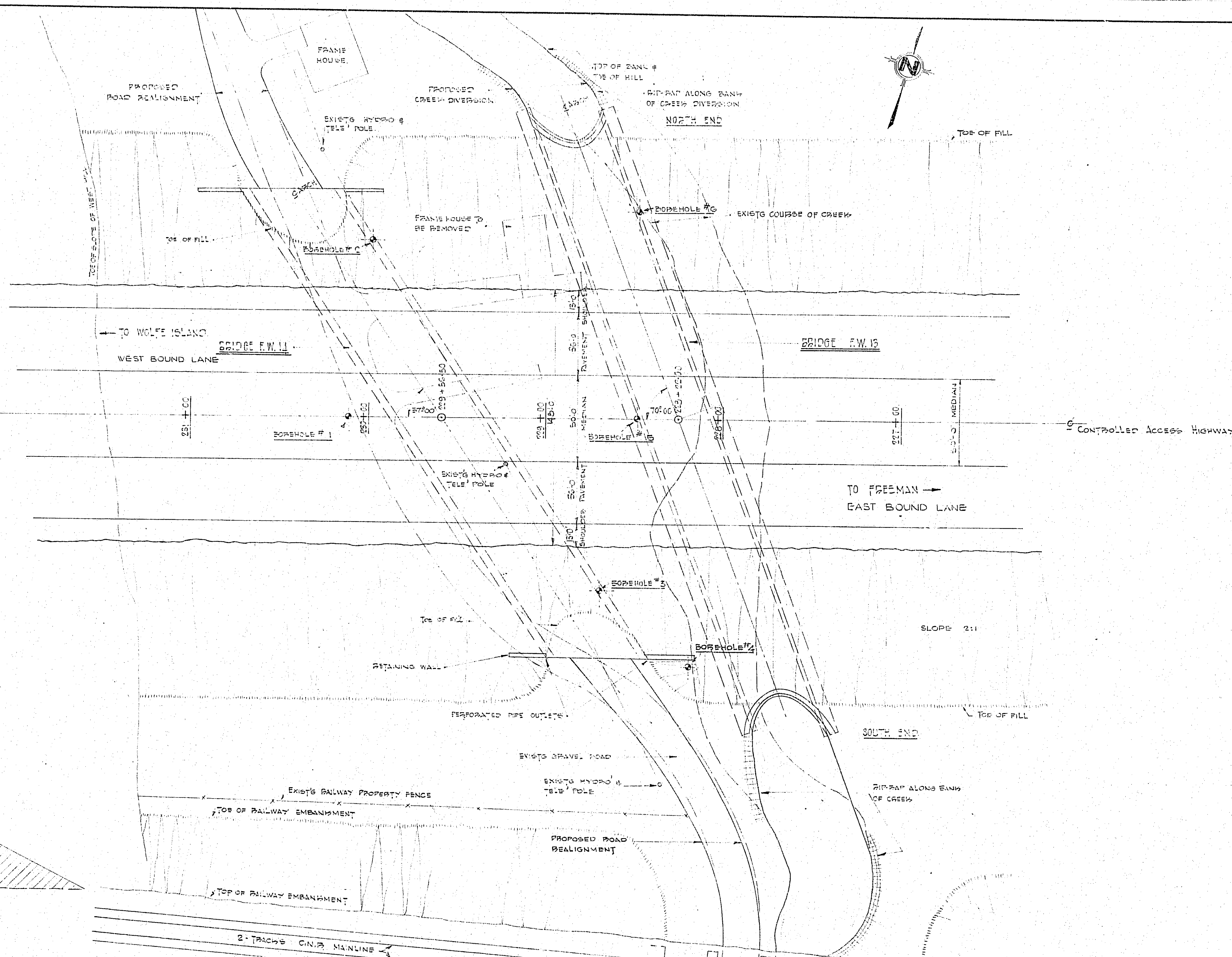
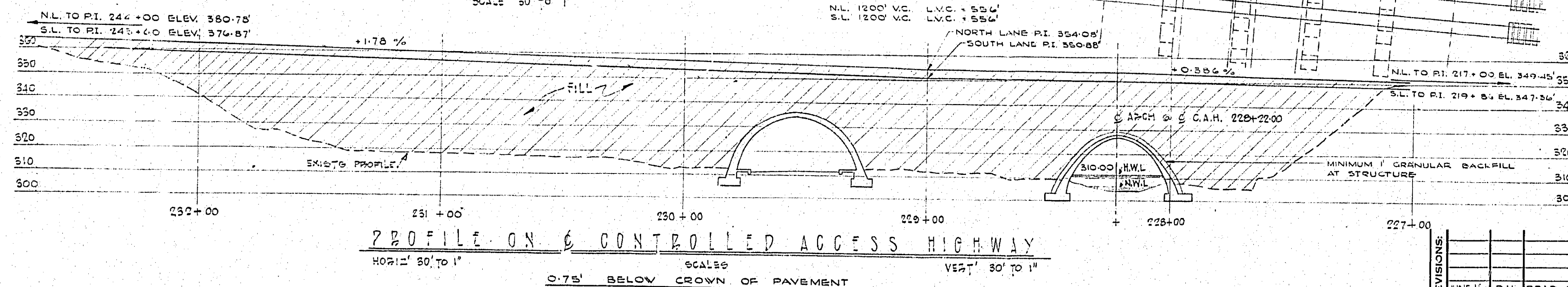
D-3636-5 PANEL 'A' EXTRADOS REINF.-PANEL 'C' EXTRADOS & INTRADOS, REINF.

D-3636-6 REINFORCING STEEL SCHEDULE

D-3636-7 REINFORCING STEEL SCHEDULE.

D-3636-8 REINFORCING STEEL SCHEDULE.

D-3636-9 REINFORCING STEEL SCHEDULE.



KEY PLAN
SCALE: 1 IN. = 10'

NOTE TO DISTRICT ENGINEER - CONCRETE WORK ON THIS STRUCTURE MUST NOT BE COMMENCED UNTIL MONUMENTS TO FIX CONTROL POINTS HAVE BEEN ERECTED & CHECKED BY THE DISTRICT ENGINEER.

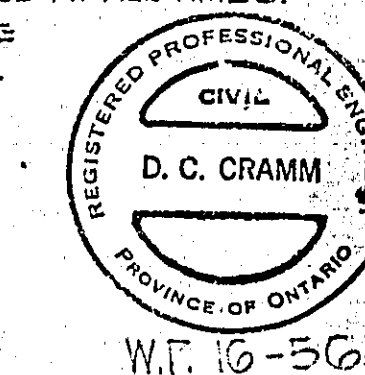
NOTE TO CONTRACTOR - STRUCTURE TO BE BUILT IN ACCORDANCE WITH SPECIFICATIONS FOR STRUCTURES, D.H.O. FORM NO 9, AND THE SPECIAL PROVISIONS, EXTRA COPIES OF WHICH MAY BE OBTAINED FROM THE DISTRICT ENGINEER.

CONCRETE MIX - ALL CONCRETE IN STRUCTURE SHALL HAVE A MINIMUM COMPRESSIVE STRENGTH OF 3000 P.S.I. AT 28 DAYS. APPROVED ADMIXTURE SUPPLIED BY CONTRACTOR AND ADDED TO CONCRETE AS DIRECTED BY ENGINEER.

REINFORCING STEEL - CLEAR COVER IN FOOTINGS - 3" CLEAR COVER IN ALL CONCRETE IN CONTACT WITH EARTH OR ROCK - 3" CLEAR COVER IN ALL REMAINING CONC' IN STRUCTURE - 2" EXCEPT WHERE OTHERWISE NOTED. ALL BAR SPLICES TO BE LAPPED 35 DIAMETERS EXCEPT WHERE OTHERWISE NOTED.

CONSTRUCTION NOTES:

1. FOUNDATIONS: FOOTINGS DESIGNED FOR A MAXIMUM ALLOWABLE SOIL PRESSURE OF TONS PER SQ. FT. EXCAVATIONS FOR FOOTINGS TO BE CUT AS NEARLY AS POSSIBLE AND COMPLETELY FILLED WITH CONCRETE.
2. CONSTRUCTION JOINTS SHALL BE MADE ONLY WHERE LOCATED ON THE DRAWINGS UNLESS OTHERWISE APPROVED BY THE ENGINEER. EACH ARCH SECTION MUST BE PLACED CONTINUOUSLY IN ONE POUR.
3. ARCH CHOKING MUST NOT BE STRUCK UNTIL CONCRETE HAS REACHED ITS DESIGN STRENGTH, AND IN ANY CASE NOT LESS THAN 14 DAYS AFTER CONCRETE HAS BEEN PLACED. THE ENGINEER MUST GIVE WRITTEN PERMISSION BEFORE REMOVAL IS BEGUN.
4. FILL OVER ARCH TO BE PLACED EVENLY & SIMULTANEOUSLY ON BOTH SIDES AND FOR THE FULL LENGTH.
5. FILL AGAINST ARCH SHALL BE COMPACTED IN 6" LAYERS.
6. FALSEWORK AT CENTRE OF ARCH TO BE REMOVED FIRST THEN WORKING EACH WAY FROM THE SIDES. THE REMAINING FALSEWORK SHALL BE REMOVED SO THAT THE ARCH SUPPORT IS EQUALLY BALANCED AT ALL TIMES.
7. PROVISION FOR THE DEFLECTION OF FALSEWORK WILL BE MADE BY THE CONTRACTOR IN ADDITION TO THE D.L. DEFLECTION.



SIN	0.939693
COS	0.342020
TAN	2.747477

SIN	0.838071
COS	0.544639
TAN	1.539805

G.C. PARKER AND ASSOCIATES LIMITED
HAMILTON CONSULTING ENGINEERS ONTARIO

DEPARTMENT OF HIGHWAYS:-ONTARIO-
BRIDGE OFFICE:-TORONTO

GRINDSTONE CREEK
EAST FLAMBOROUGH TOWNSHIP.

AT ALDERSHOT
BRIDGE FW-13

THE KING'S HIGHWAY No. 403 DIST. N.
CO. HALTON

SITE PLAN

APPROVED

<div style="display: flex; justify-content: space-between;"> <div> <i>Edw. Saye</i> BRIDGE ENGINEER </div> <div> DESIGN ENGINEER </div> </div>	
---	--

DESIGN	V. D. A.	CHECK	J. A. S.	CONTRACT NUMBERS			
DRAWING	G. S. Z.	CHECK	J. A. S.				
				LOADING			

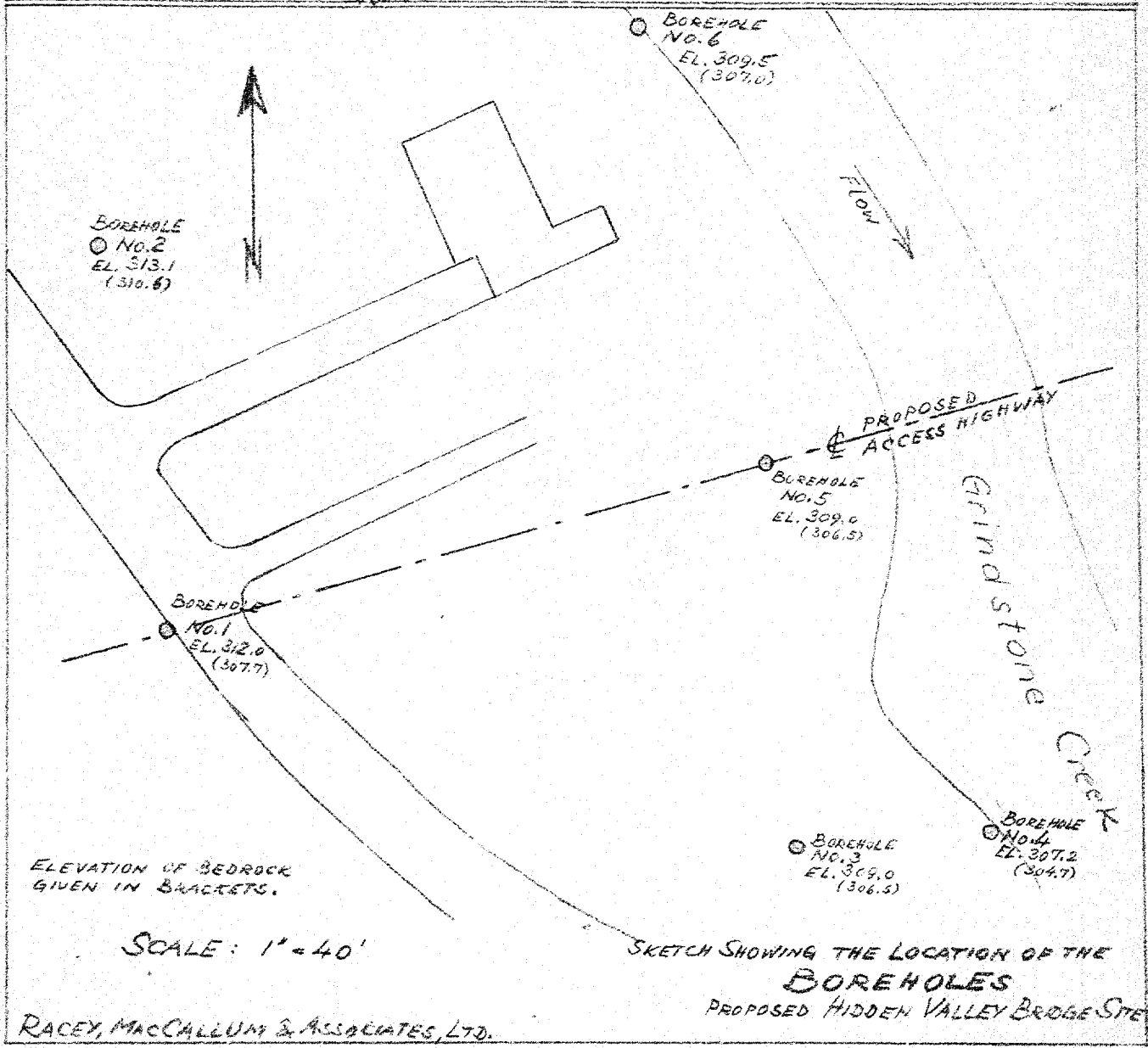
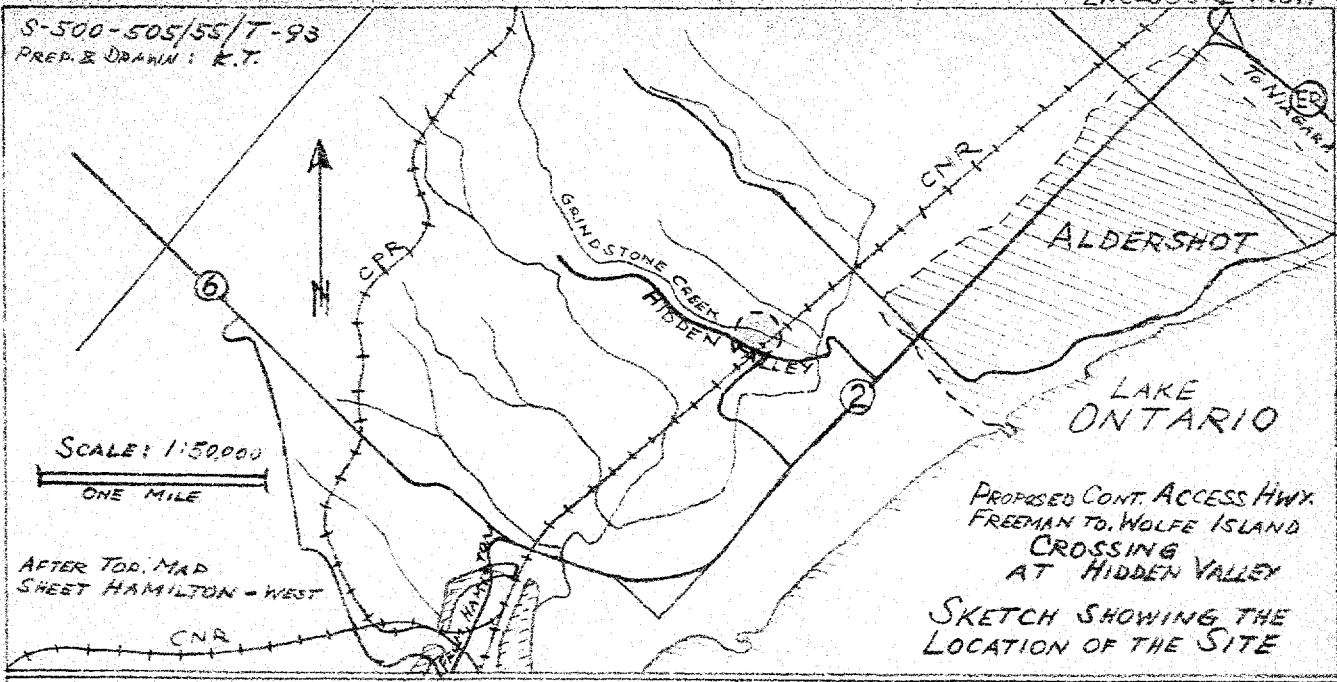
TRACING	S.H.Y.	CHECK	D.C.C.		DRAWING	D - 9553 +
DATE	JUNE 29, 1956			H20-516	NUMBER	

Twp #1337-193-1-A 337-50

~~10-193~~

~~D36,6~~
~~1 to 9~~

S-500-505/55/T-93
PREP. & DRAWN: R.T.





Appendix D

Rock Core Photographs (Present Investigation)

PHOTOGRAPHS OF ROCK CORES - BOREHOLE HV-01

RUNS 1 to 3



TOP

BOTTOM

Date Drilled: September 25, 2022

Run #	Depth (ft)	Depth (m)
1	(50'0" – 54'5")	(15.24 – 16.59)
2	(54'5" – 57'0")	(16.59 – 17.37)
3	(57'0" – 61'10")	(17.37 – 18.85)

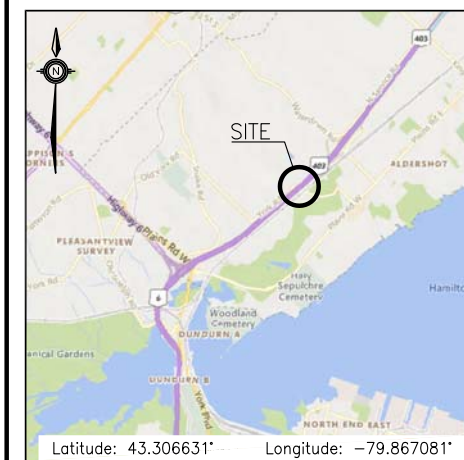


Appendix E

Borehole Location and Soil Strata Drawing








THURBER ENGINEERING LTD.



KEYPLAN

LEGEND

	Borehole
	Borehole (Previous Investigation)
N	Blows /0.3m (Std Pen Test, 475J/blow)
CONE	Blows /0.3m (60° Cone, 475J/blow)
PH	Pressure, Hydraulic
	Water Level
	Head Artesian Water
	Piezometer
90%	Rock Quality Designation (RQD)
A/R	Auger Refusal

NO	ELEVATION	NORTHING	EASTING
1	95.1	4 796 360.5	275 006.3
2	95.4	4 796 385.0	274 988.1
3	94.2	4 796 369.2	275 058.8
4	93.6	4 796 370.4	275 078.8
5	94.2	4 796 394.7	275 042.1
6	94.3	4 796 420.4	275 018.8
GS-01	108.2	4 796 396.1	275 019.9
HV-01	107.3	4 796 352.0	275 027.7

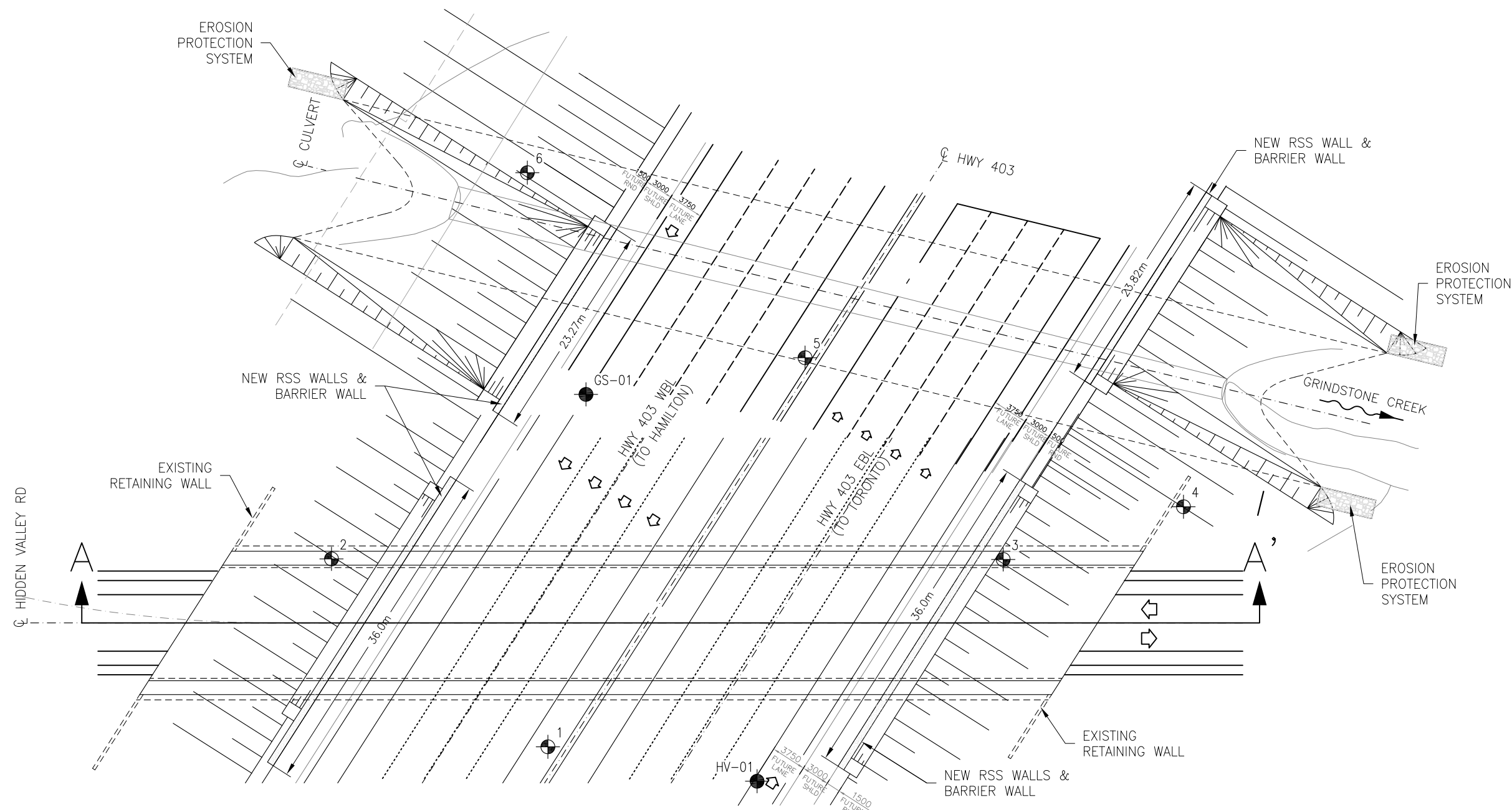
-NOTES-

- 1) The boundaries between soil strata have been established only at Borehole locations. Between Boreholes the boundaries are assumed from geological evidence.
- 2) This drawing is for subsurface information only. Surface details and features are for conceptual illustration.
- 3) Coordinate system is MTM NAD 83 Zone 10.

GEOCRES No. 30M5-360

[illegible]

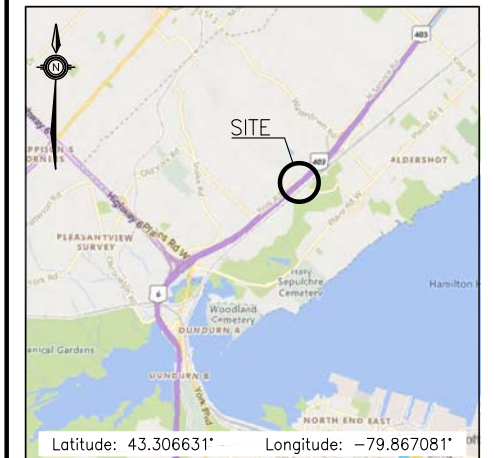
FILENAME: H:\Drafting\25000\25963\TED-25963-PLPR-GS-HV.dwg
DATE: 11/7/2003 9:03 AM



CONT No
WO No 16-20004






HIGHWAY 403
HIDDEN VALLEY ROAD
CULVERT REHABILITATION
BOREHOLE SOIL STRATA

SHEET |



KEYPLAN

LEGEND

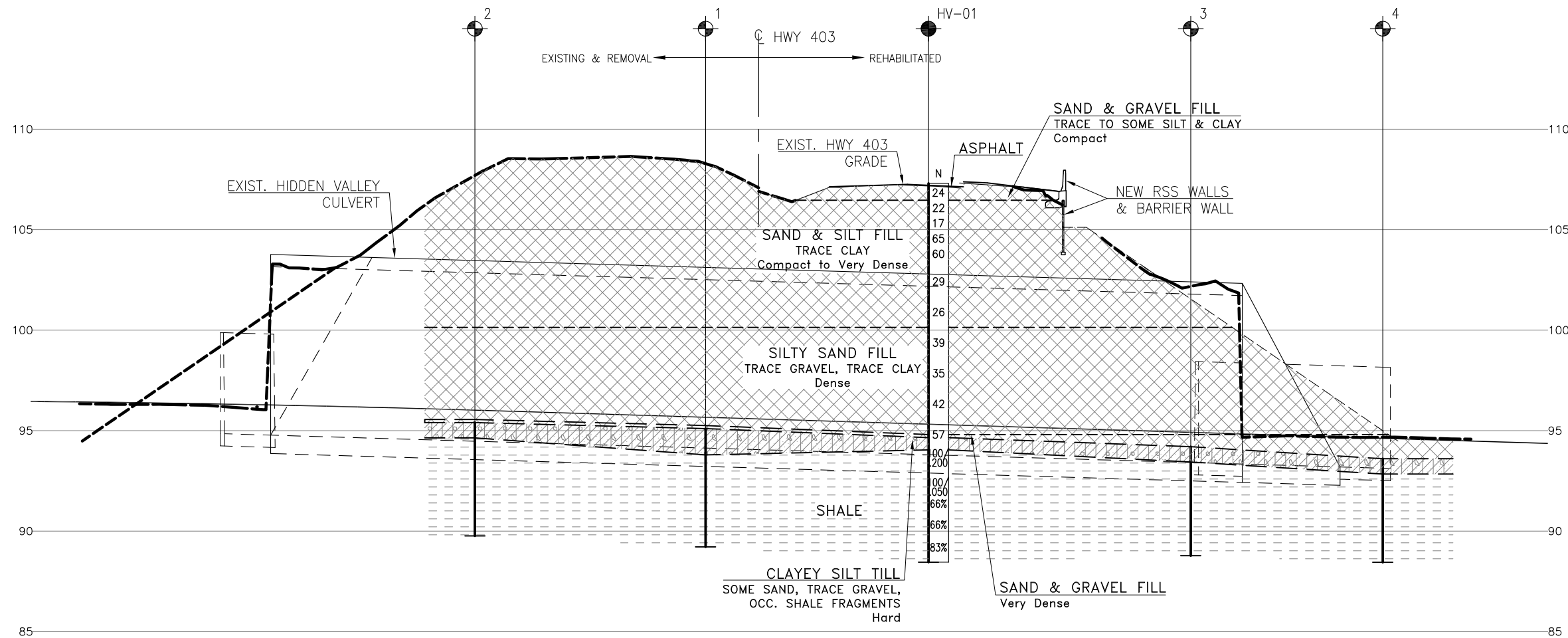
	Borehole
	Borehole (Previous Investigation)
N	Blows /0.3m (Std Pen Test, 475J/blow)
CONE	Blows /0.3m (60' Cone, 475J/blow)
PH	Pressure, Hydraulic
	Water Level
	Head Artesian Water
	Piezometer
90%	Rock Quality Designation (RQD)
A/R	Auger Refusal

[illegible]

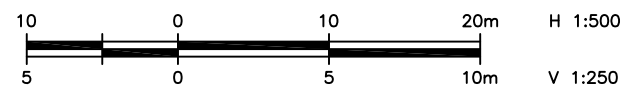
-NOTES-

- 1) The boundaries between soil strata have been established only at Borehole locations. Between Boreholes the boundaries are assumed from geological evidence.
- 2) This drawing is for subsurface information only. Surface details and features are for conceptual illustration.
- 3) Coordinate system is MTM NAD 83 Zone 10.

GEOCRES No. 30M5-360



PROFILE ALONG HIDDEN VALLEY ROAD (A-A')



REVISIONS									
	DATE	BY	DESCRIPTION						
DESIGN	RPR	CHK	SKP	CODE	LOAD	DATE	NOV 2023		
DRAWN	AN	CHK	RPR	SITE	10-192/C/STRUCT	DWG	2		