

METRIC

DIMENSIONS ARE IN METRES
AND/OR MILLIMETRES UNLESS
OTHERWISE SHOWN. STATIONS
ARE IN KILOMETRES + METRES.

CONT No.2007-5179

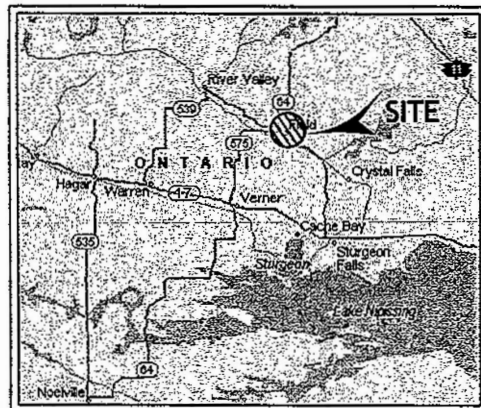
WP No 211-93-01



STURGEON RIVER DETOUR BRIDGE
BORE HOLE CROSS SECTIONS
& SOIL STRATA

SHEET
101

SHAHEEN & PEAKER LIMITED



KEY MAP
N.T.S

LEGEND

- Approx. Borehole Location (THIS INVESTIGATION)
- ⊕ Approx. Borehole Location by OTHERS (2003)
- N Blows/0.3m (Std. Pen. Test, 475 J/blow)
- ⬆ Recorded Water Level at Time of Investigation Nov. , 2005

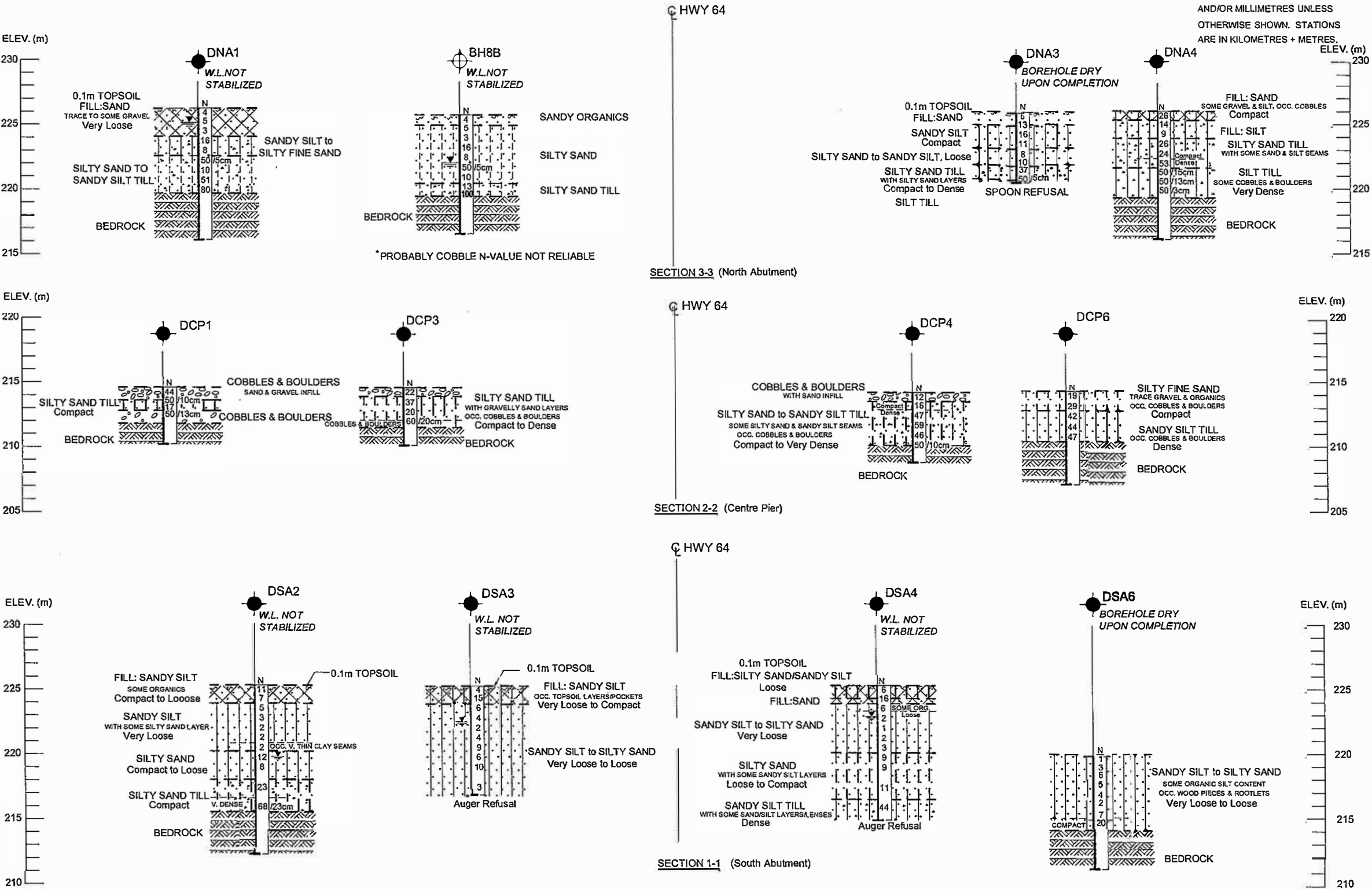
BH No.	ELEV.	CO-ORDINATES	
		NORTH	EAST
DSA2	225.3	5 153 651.5	264 366.4
DSA3	225.3	5 153 647.3	264 368.5
DSA4	225.3	5 153 643.4	264 373.5
DSA6	222.1	5 153 641.9	264 378.0
DCP1	222.0	5 153 683.3	264 392.3
DCP3	222.1	5 153 682.1	264 396.1
DCP4	222.1	5 153 676.6	264 401.7
DCP6	222.1	5 153 674.3	264 402.8
DNA1	225.7	5 153 712.3	264 417.1
DNA3	226.0	5 153 704.8	264 427.2
DNA4	226.0	5 153 704.3	264 429.6
BH8B	225.7	5 153 712.0	264 422.0

NOTE

The boundaries between soil strata have been established only at Bore Hole locations. Between Bore Holes the boundaries are assumed from geological evidence.

REV.	DATE	BY	DESCRIPTION

Geocres No. 411-200 - A			
HWY No. 64	DIST 54		
SUBM'D ZO	CHECKED KSH	DATE Dec, 2005	SITE 43-019
DRAWN JZ	CHECKED	APPROVED	DWG 2



NOTE:

1. THIS DRAWING TO BE READ IN CONJUNCTION WITH ASSOCIATED GEOTECHNICAL INVESTIGATION REPORT.
2. DRAWING NOT TO SCALE. DO NOT SCALE DRAWING.
3. ALL BOREHOLE LOCATIONS ARE APPROXIMATE.
4. FOR DETAILED SUBSURFACE CONDITIONS REFER TO RECORD OF BOREHOLE SHEETS.
5. FOR SECTION LOCATIONS REFER TO DRAWING 1.

