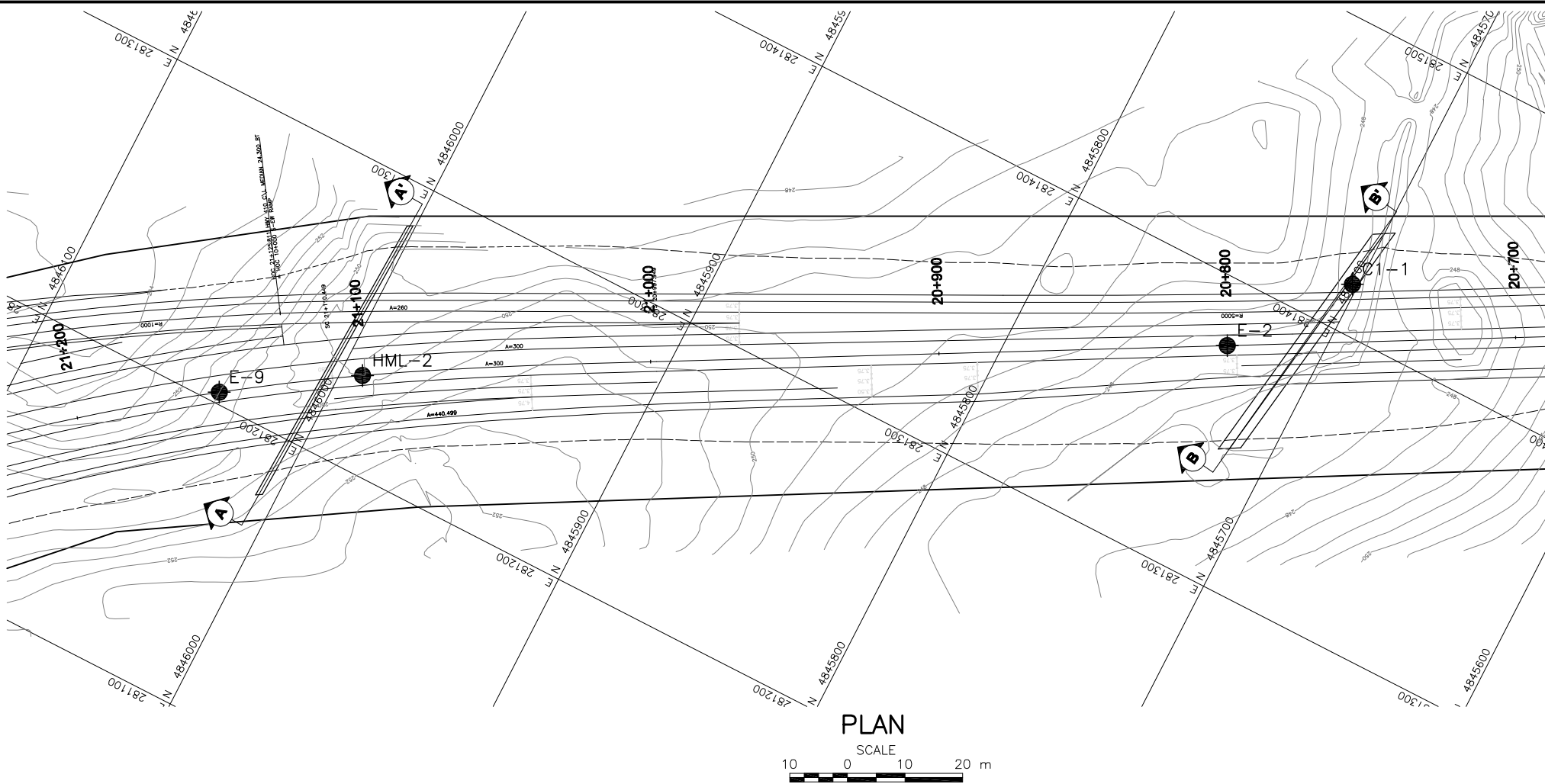
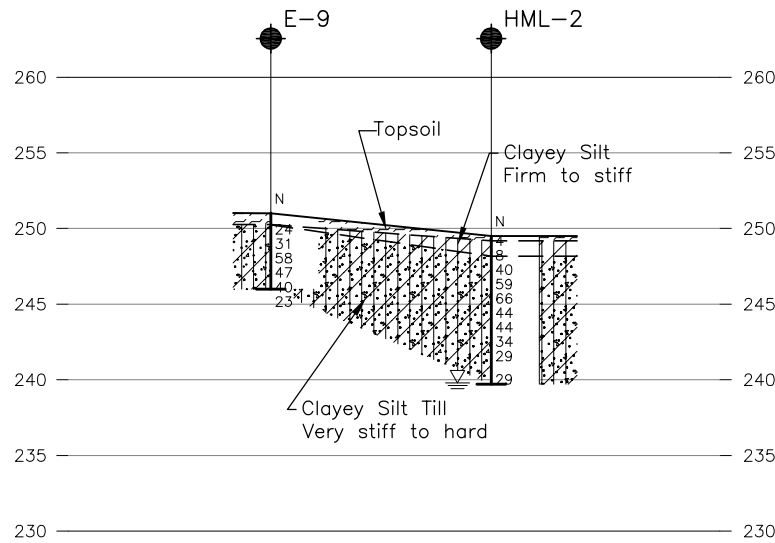
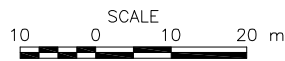


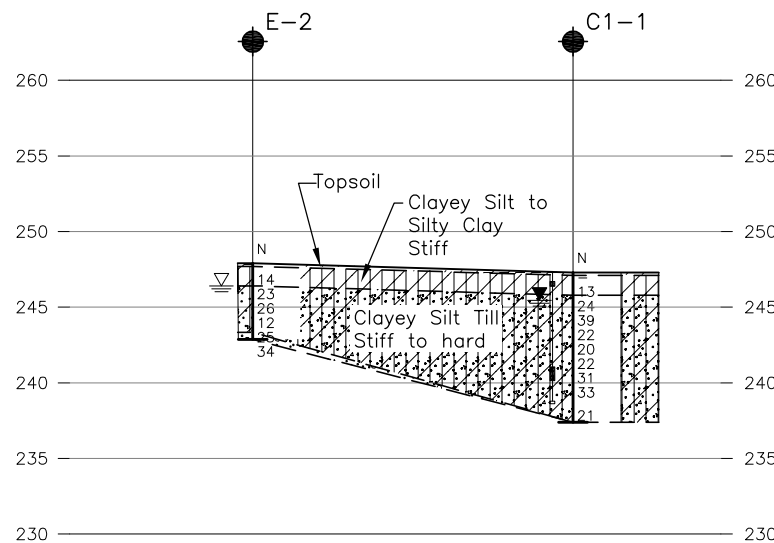
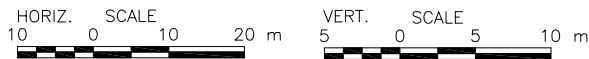
**METRIC**  
DIMENSIONS ARE IN METRES AND/OR  
MILLIMETRES UNLESS OTHERWISE SHOWN.  
STATIONS IN KILOMETRES + METRES.



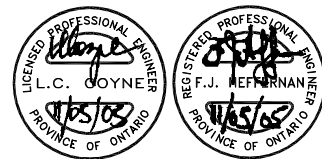
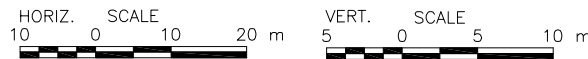
PLAN



**A-A'** CULVERT SECTION  
HIGHWAY 410 STATION 21+110



**B-B'** CULVERT SECTION  
HIGHWAY 410 STATION 20+770



CONT No. 2006-2018  
WP No. 101-00-00



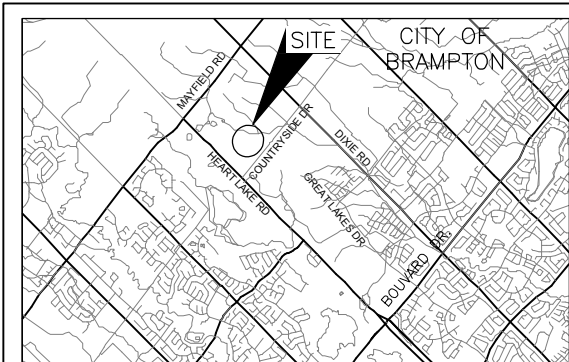
HIGHWAY 410  
CULVERTS AT STATIONS 20+770 AND 21+110

SHEET  
394

BOREHOLE LOCATIONS & SOIL STRATA

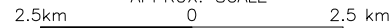


**Golder Associates Ltd.**  
MISSISSAUGA, ONTARIO, CANADA



KEY PLAN

APPROX. SCALE



### LEGEND

- Borehole - Current Investigation
- Seal
- Piezometer
- N Standard Penetration Test Value
- 16 Blows/0.3m unless otherwise stated  
(Std. Pen. Test, 475 j/blow)
- 100% Rock Quality Designation (RQD)
- WL in piezometer
- WL upon completion of drilling

No.	ELEVATION	CO-ORDINATES	
		NORTHING	EASTING
C1-1	247.3	4845701.0	281416.7
E-2	247.9	4845730.8	281378.0
E-9	251.0	4846034.3	281204.0
HML-2	249.5	4845992.8	281231.8

### NOTES

This drawing is for subsurface information only. The proposed works are shown for illustration purposes only and may not be consistent with the final design configuration as shown elsewhere in the Contract Documents.

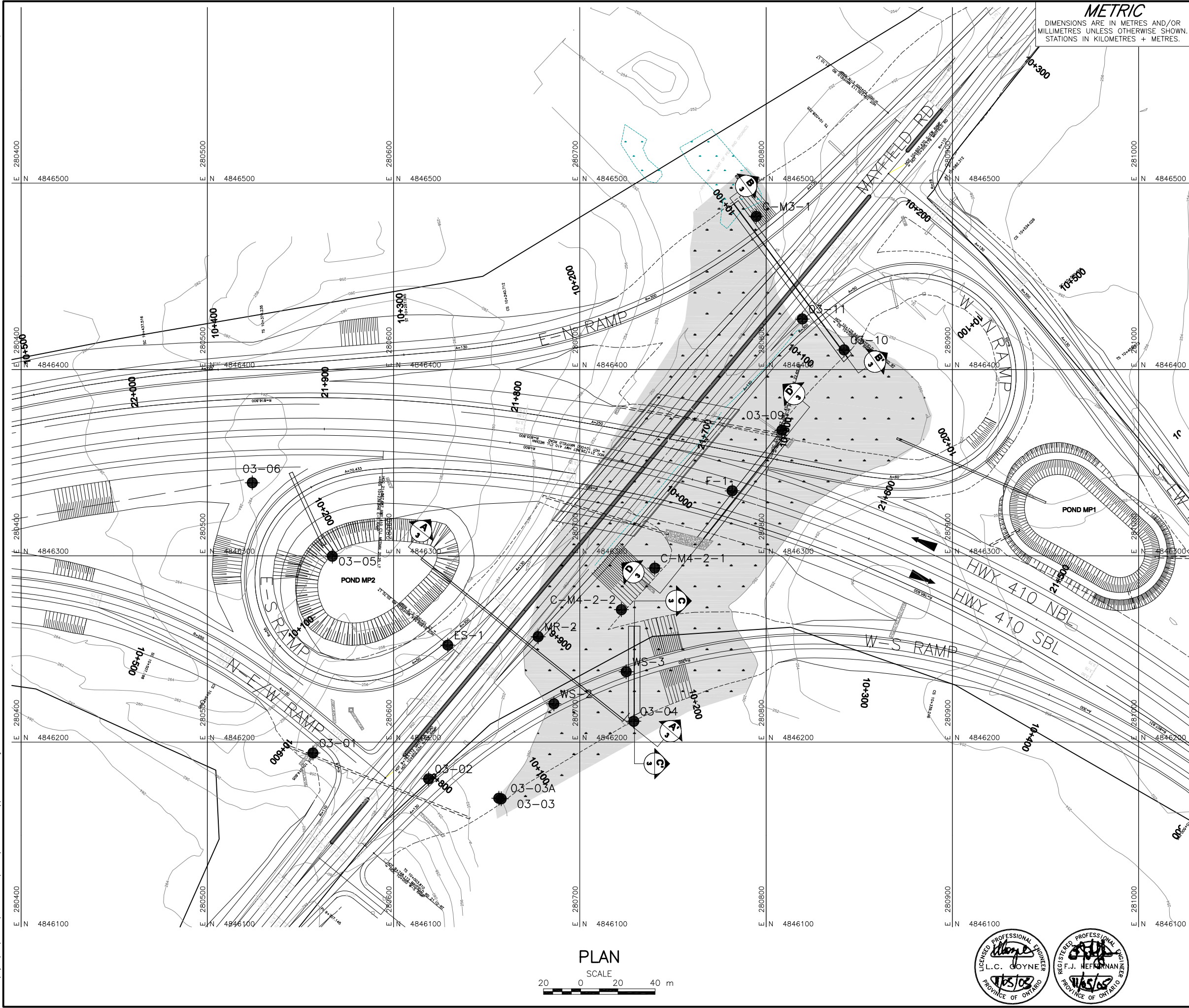
The boundaries between soil strata have been established only at borehole locations. Between Boreholes the boundaries are assumed from geological evidence.

The complete foundation investigation and design report for this project and other related documents may be examined at the Materials Engineering and Research Office, Downsview. Information contained in this report and related documents is specifically excluded in accordance with Section GC 2.01 of OPS General Conditions.

### REFERENCE

Culvert locations received in digital format from URS Canada Inc. (drawing file "01004 Hwy 410 plan-CV.dwg", received March 9, 2005).

NO.	DATE	BY	REVISION
Geocres No.			
HWY. 410		PROJECT NO. 001-1159 (4)	DIST.
SUBM'D. SP	CHKD. LCC	DATE: MAY 2005	SITE:
DRAWN: JFC	CHKD. SP	APPD. LCC	DWG. CUL-2A




**METRIC**  
DIMENSIONS ARE IN METRES AND/OR  
MILLIMETRES UNLESS OTHERWISE SHOWN.  
STATIONS IN KILOMETRES + METRES.

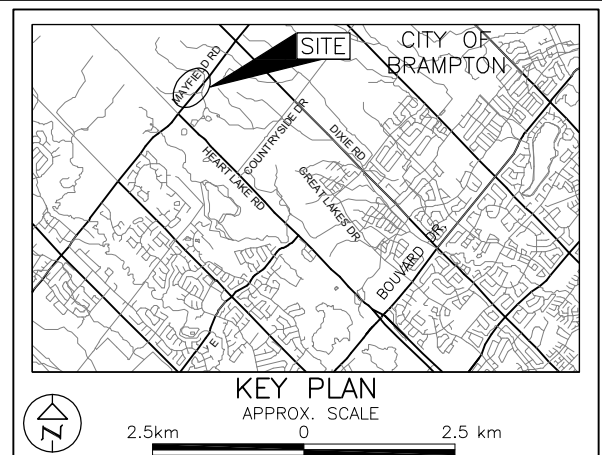
CONT No. 2006-2018  
WP No. 101-00-00


HIGHWAY 410  
CULVERTS AT MAYFIELD ROAD INTERCHANGE

BOREHOLE LOCATIONS

  
SHEET  
395

**Golder Associates Ltd.**  
MISSISSAUGA, ONTARIO, CANADA



LEGEND			
 Borehole - Current Investigation			
No.	ELEVATION	CO-ORDINATES	
		NORTHING	EASTING
03-01	255.1	4846194.2	280556.7
03-02	253.4	4846180.3	280618.8
03-03	248.9	4846169.9	280656.5
03-03A	248.9	4846169.6	280658.5
03-04	249.8	4846211.2	280729.0
03-05	261.8	4846299.8	280567.1
03-06	263.9	4846339.2	280524.1
03-09	248.6	4846367.4	280808.5
03-10	248.9	4846410.5	280841.9
03-11	251.9	4846427.1	280819.5
C1-1	247.3	4845701.9	281416.7
C-M3-1	250.8	4846487.2	280799.1
C-M4-2-1	249.5	4846293.4	280740.2
C-M4-2-2	248.7	4846271.2	280722.3
E-2	247.9	4845730.8	281378.0
ES-1	257.3	4846252.1	280629.1
F-1	248.3	4846335.0	280781.8
MR-2	248.8	4846256.6	280677.6
WS-2	249.3	4846220.6	280686.1
WS-3	248.6	4846237.8	280724.9

**NOTES**

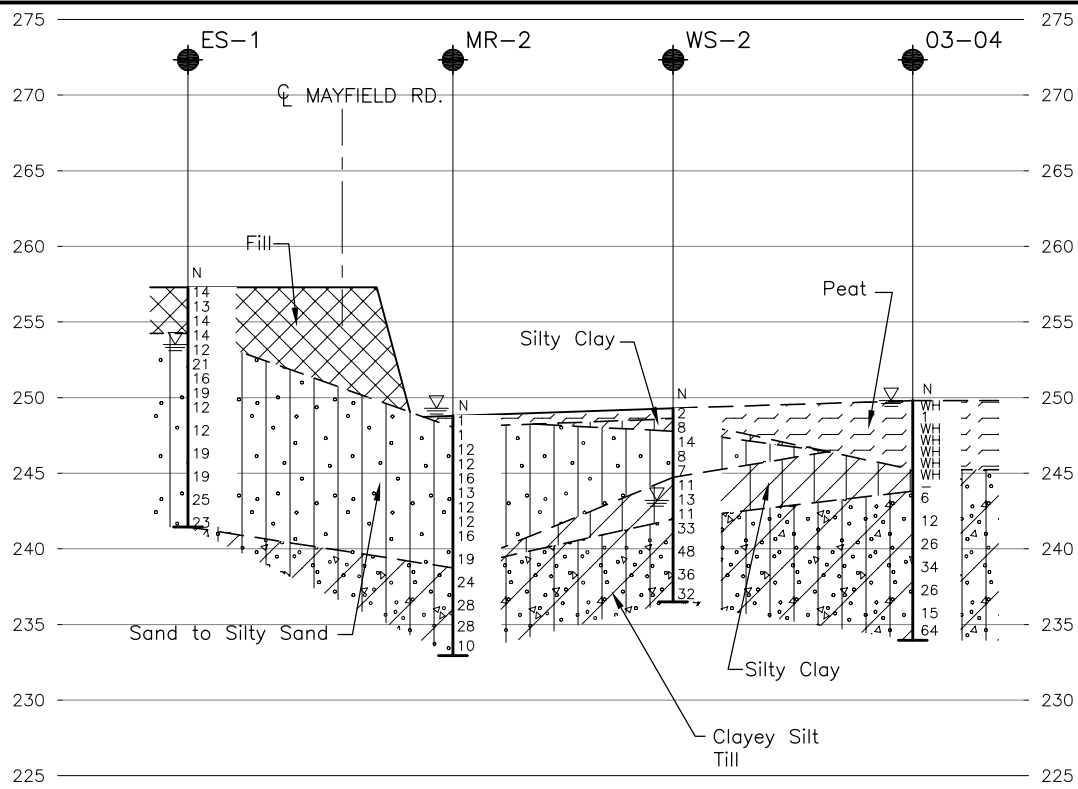
This drawing is for subsurface information only. The proposed works are shown for illustration purposes only and may not be consistent with the final design configuration as shown elsewhere in the Contract Documents.

The complete foundation investigation and design report for this project and other related documents may be examined at the Materials Engineering and Research Office, Downsview. Information contained in this report and related documents is specifically excluded in accordance with Section GC 2.01 of OPS General Conditions.

REFERENCE			
Culvert locations received in digital format from URS Canada Inc. (drawing file "01004 Hwy 410 plan-CV.dwg", received March 9, 2005) and swamp configuration received in digital format from URS Canada Inc. (drawing file "Mayfield_watermain_option.dwg", received March 9, 2005).			
NO.	DATE	BY	REVISION
Geocres No.			
HWY. 410	PROJECT NO. 001-1159-4		DIST.
SUBM'D. SP	CHKD. CUL-2B	DATE: MAY 2005	SITE:
DRAWN: JFC	CHKD. SP	APPD. LCC	DWG. CUL-2B

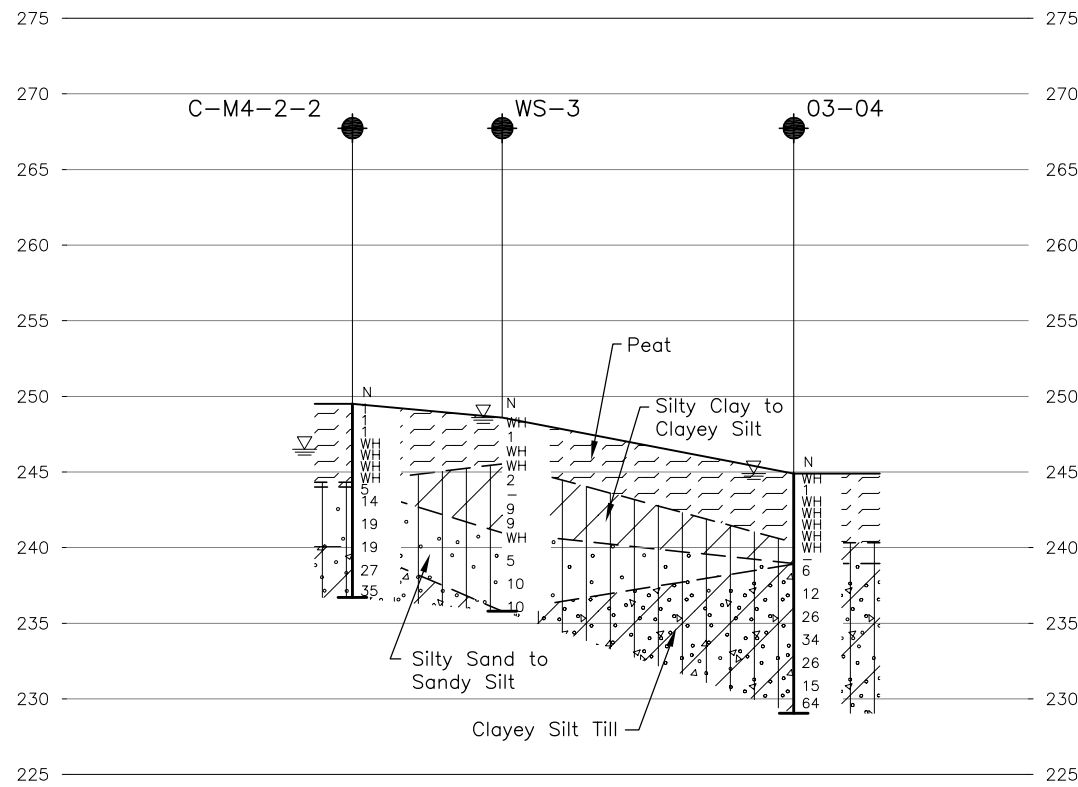






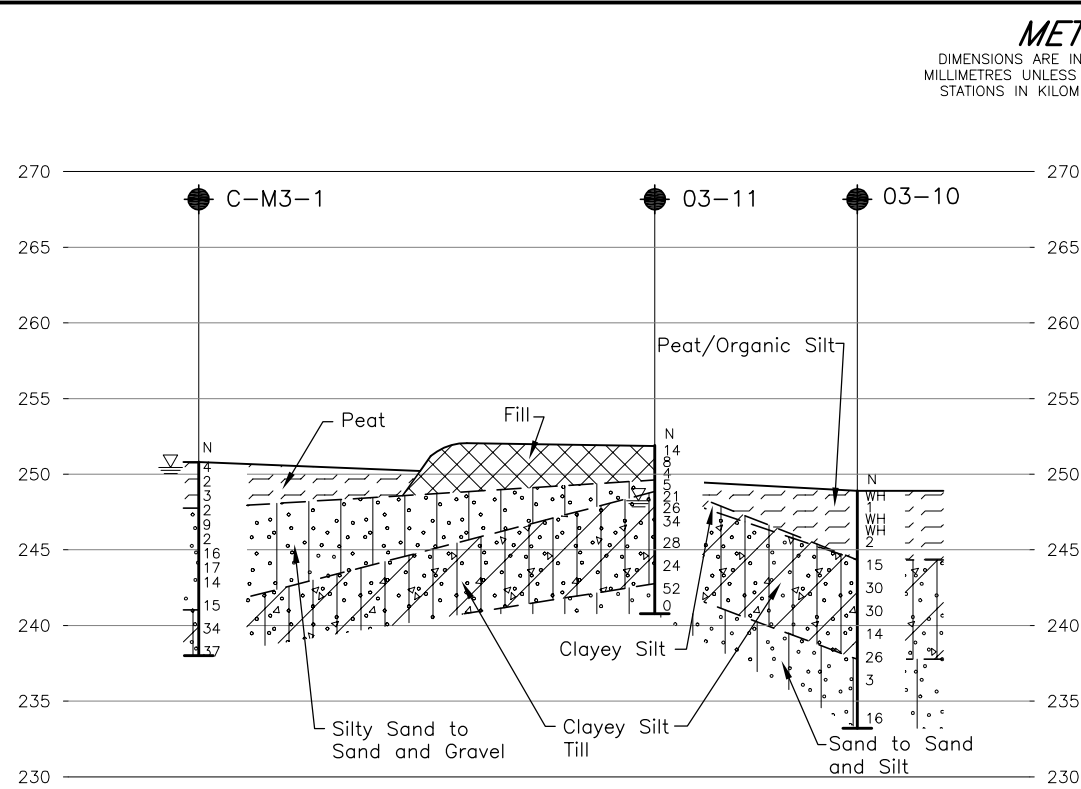
**A-A'**  
**1** CULVERT SECTION  
MAYFIELD ROAD STATION 9+790

HORIZ. SCALE 0 10 20 m  
VERT. SCALE 0 5 10 m



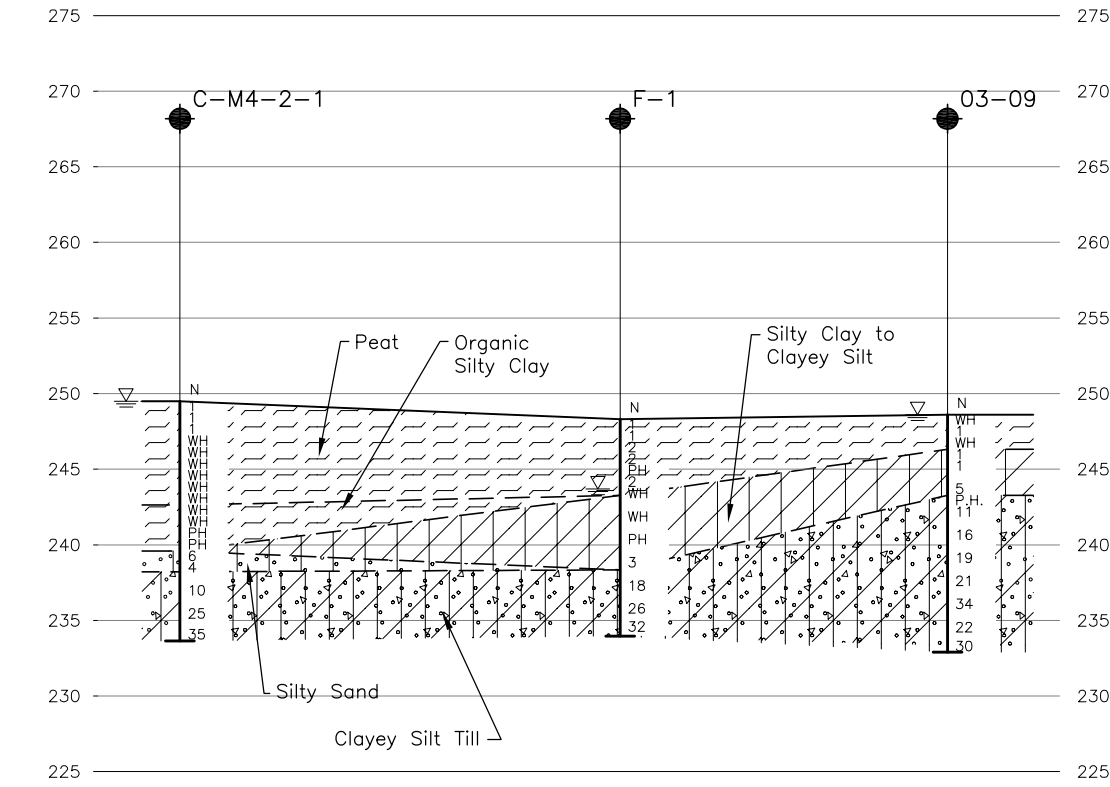
**C-C'**  
**1** CULVERT SECTION  
W-S RAMP STATION 10+145

HORIZ. SCALE 0 10 20 m  
VERT. SCALE 0 5 10 m



**B-B'**  
**1** CULVERT SECTION  
MAYFIELD ROAD STATION 21+680

HORIZ. SCALE 0 10 20 m  
VERT. SCALE 0 5 10 m



**D-D'**  
**1** CULVERT SECTION  
HIGHWAY 410 STATION 21+680

HORIZ. SCALE 0 10 20 m  
VERT. SCALE 0 5 10 m

**METRIC**  
DIMENSIONS ARE IN METRES AND/OR  
MILLIMETRES UNLESS OTHERWISE SHOWN.  
STATIONS IN KILOMETRES + METRES.

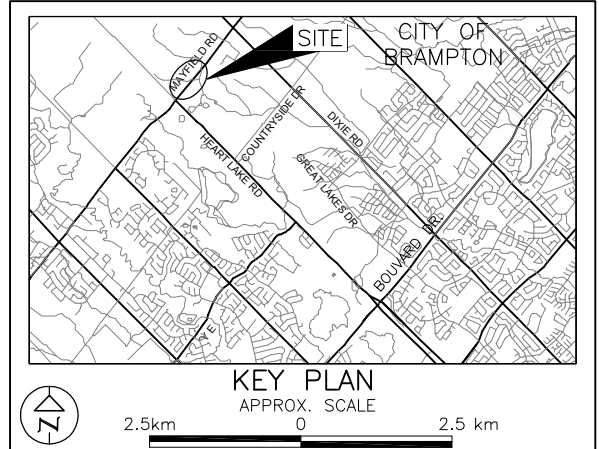
CONT No. 2006-2018  
WP No. 101-00-00

HIGHWAY 410  
CULVERTS AT MAYFIELD ROAD INTERCHANGE  
BOREHOLE SOIL STRATA

SHEET  
396



**Golder Associates Ltd.**  
MISSISSAUGA, ONTARIO, CANADA



LEGEND			
	Borehole - Current Investigation		
	Seal		
	Piezometer		
	Standard Penetration Test Value		
	Blows/0.3m unless otherwise stated (Std. Pen. Test, 475 j/blow)		
	Rock Quality Designation (RQD)		
	WL in piezometer		
	WL upon completion of drilling		

No.	ELEVATION	CO-ORDINATES	
		NORTHING	EASTING
03-04	249.8	4846211.2	280729.0
03-09	248.6	4846367.4	280808.5
03-10	248.9	4846410.5	280841.9
03-11	251.9	4846427.1	280819.5
C1-1	247.3	4845701.9	281416.7
C-M3-1	250.8	4846487.2	280799.1
C-M4-2-1	249.5	4846293.4	280740.2
C-M4-2-2	248.7	4846271.2	280722.3
E-2	247.9	4845730.8	281378.0
ES-1	257.3	4846252.1	280629.1
F-1	248.3	4846335.0	280781.8
MR-2	248.8	4846256.6	280677.6
WS-2	249.3	4846220.6	280686.1
WS-3	248.6	4846237.8	280724.9

**NOTES**

This drawing is for subsurface information only.

The boundaries between soil strata have been established only at borehole locations. Between Boreholes the boundaries are assumed from geological evidence.

The complete foundation investigation and design report for this project and other related documents may be examined at the Materials Engineering and Research Office, Downsview. Information contained in this report and related documents is specifically excluded in accordance with Section GC 2.01 of OPS General Conditions.

**REFERENCE**

Culvert locations received in digital format from URS Canada Inc. (drawing file "01004 Hwy 410 plan-CV.dwg", received March 9, 2005).

NO.	DATE	BY	REVISION
Geocres No.			
HWY. 410		PROJECT NO. 001-1159-4	DIST.
SUBM'D. SP	CHKD. LCC	DATE: MAY 2005	SITE:
DRAWN: JFC	CHKD. SP	APPD.	DWG. CUL-2C

