

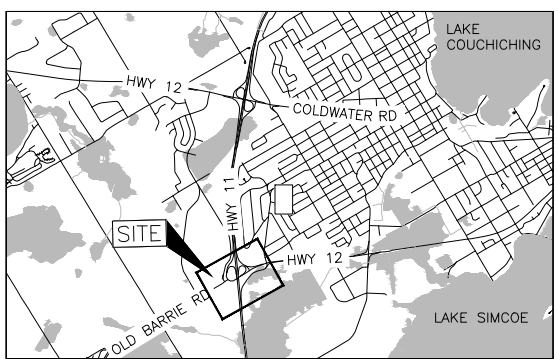
METRIC
DIMENSIONS ARE IN METRES AND/OR
MILLIMETRES UNLESS OTHERWISE SHOWN.
STATIONS IN KILOMETRES + METRES.

CONT No. _____
GWP No. 2129-18-00



HIGHWAY 11/12 INTERCHANGE
HIGH FILLS AND DEEP CUTS
BOREHOLE LOCATION PLAN

SHEET



KEY PLAN
SCALE
1 0 1 2 km

BOREHOLE CO-ORDINATES NAD 83 MTM ZONE 10			
No.	ELEVATION	NORTHING	EASTING
BH15-03	276.9	4938871.2	308899.6
BH15-06	251.1	4938950.1	309452.2
BH15-08	247.8	4938741.0	309182.3
DC-1	278.9	4938953.2	308913.3
DC-2	277.7	4938911.1	308895.1
DC-3	275.5	4938855.5	308883.1
DC-4	272.9	4938926.2	308948.3
DC-5	277.9	4938924.6	308984.1
DC-6A	272.4	4938911.8	309013.5
DC-6B	276.1	4938924.0	308998.5
DC-7A	276.7	4938703.1	308938.5
DC-7B	273.3	4938733.6	308939.4
DC-8A	277.3	4938699.0	308896.4
DC-8B	273.8	4938720.4	308889.6
DC-9	276.4	4938687.2	308842.4
DC-10	274.3	4938663.0	308787.1
DC-11	270.8	4938628.4	308722.0
HF-1	248.5	4938654.3	309160.7
HF-2	248.0	4938698.9	309185.5
HF-3	246.2	4938823.5	309265.8
HF-4	243.0	4938846.8	309303.3
HF-5	241.9	4938867.1	309341.7
HF-6	242.0	4938892.1	309394.1
HF-7	238.7	4938912.0	309454.5
HF-8	240.8	4938948.4	309488.2
HF-9	250.1	4938831.8	309188.3
HF-10	254.9	4938805.6	309214.0
HF-11	253.8	4938734.3	309163.2
HF-12	252.0	4938749.1	309121.4

BOREHOLE CO-ORDINATES NAD 83 MTM ZONE 10			
No.	ELEVATION	NORTHING	EASTING
RW-1	11.3	4938719.5	309189.6
RW-2	14.2	4938764.4	309221.3
RW-3	10.9	4938803.2	309241.3
RW-4	11.1	4938724.7	309219.0
RW-5	11.0	4938774.4	309246.7
RW-6	11.3	4938739.0	309203.6
RW-7	11.3	4938787.1	309227.6

LEGEND

- Borehole - Current Investigation
- Borehole - Previous Investigation (Geocres. No. 31D-647)

REFERENCE

Base plans provided in digital format by McIntosh Perry, drawing file nos. x_197147_BASE.dwg, received May 19, 2021.
General arrangement provided in digital format by McIntosh Perry, drawing file no. 197147-00A_BR02_P03GEN.dwg, received November 5, 2021.

NOTES

This drawing is for subsurface information only. The proposed structure details/works are shown for illustration purposes only and may not be consistent with the final design configuration as shown elsewhere in the Contracts Documents.



PLAN
SCALE
30 0 30 60 m

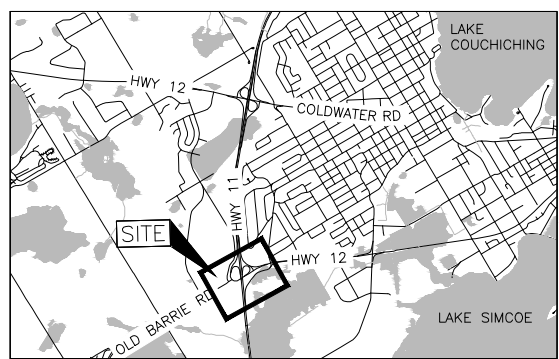
NO. DATE BY REVISION			
Geocres No. 31D11-004			
HWY. 11 AND 12	PROJECT NO. 19135676		DIST. .
SUBM'D. MH	CHKD. MH	DATE: 06/05/2024	SITE:
DRAWN: DD/ZS/SA	CHKD. AMP	APPD. DS	DWG. 1

METRIC
DIMENSIONS ARE IN METRES AND/OR
MILLIMETRES UNLESS OTHERWISE SHOWN.
STATIONS IN KILOMETRES + METRES.

CONT No. .
GWP No. 2129-18-00

HIGHWAY 11/12 INTERCHANGE
HIGH FILLS AND DEEP CUTS

SOIL STRATA



KEY PLAN
SCALE
1 0 1 2 km

LEGEND

- Borehole - Current Investigation
- Borehole - Previous Investigation (GEOCRES 31D-647)
- Seal
- Piezometer
- N Standard Penetration Test Value
- Blows/0.3m unless otherwise stated (Std. Pen. Test, 475 j/blow)
- R Refusal
- WL in piezometer (May 13, 2022)
- WL upon completion of drilling

BOREHOLE CO-ORDINATES NAD 83 MTM ZONE 10

No.	ELEVATION	NORTHING	EASTING
BB05-706	276.9	4938990.2	308990.0
BB05-708	273.0	4938753.0	308993.3
DC-3A	273.3	4938699.0	308896.4
DC-3B	276.6	4938696.0	308889.5
DC-4	276.0	4938620.2	308968.8
DC-6A	273.0	4938886.6	308983.3
DC-6B	272.0	4938827.8	308982.0
DC-6B	272.0	4938822.0	308998.5
HF-7	238.7	4938912.0	309454.5

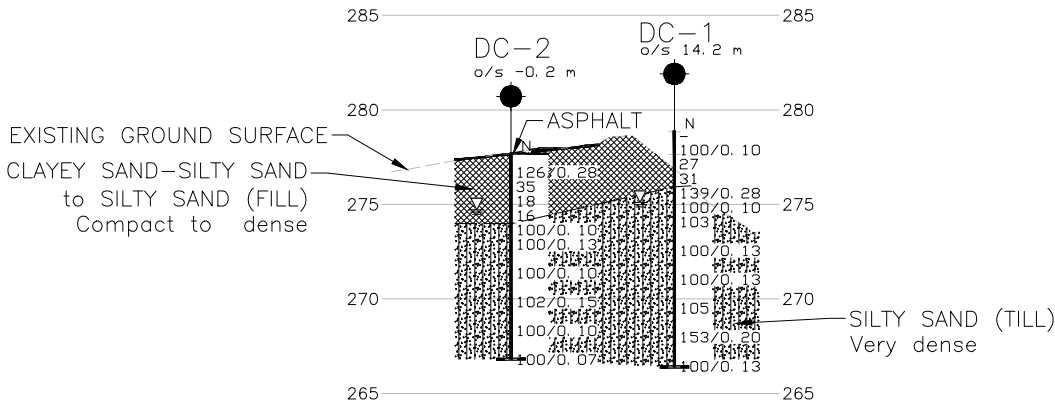
NOTES

This drawing is for subsurface information only. The proposed structure details/works are shown for illustration purposes only and may not be consistent with the final design configuration as shown elsewhere in the Contracts Documents.

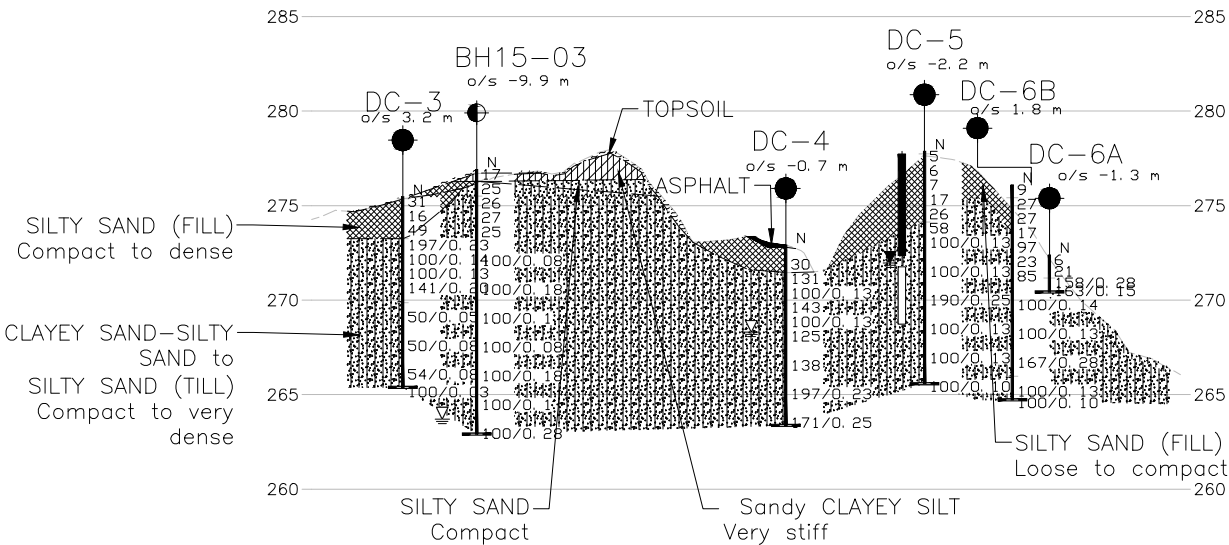
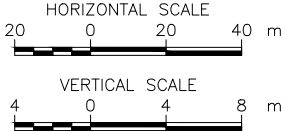
The boundaries between soil strata have been established only at borehole locations. Between boreholes the boundaries are assumed from geological evidence.

REFERENCE

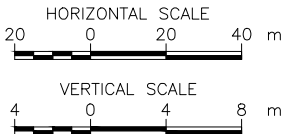
Base plans provided in digital format by McIntosh Perry, drawing file nos. x_197147_BASE.dwg, received May 19, 2021.
General arrangement provided in digital format by McIntosh Perry, drawing file no. 197147-00A_BR02_P03GEN.dwg, received November 5, 2021.



CROSS-SECTION A-A'
DEEP CUT AREA 1



CROSS-SECTION B-B'
DEEP CUT AREA 2



NO.	DATE	BY	REVISION
Geocres No. 31D11-004			
HWY. 11 AND 12		PROJECT NO. 19135676	DIST. .
SUBM'D. MH	CHKD. MH	DATE: 06/05/2024	SITE:
DRAWN: JM/SA	CHKD. DAM	APPD. LCC	DWG. 2

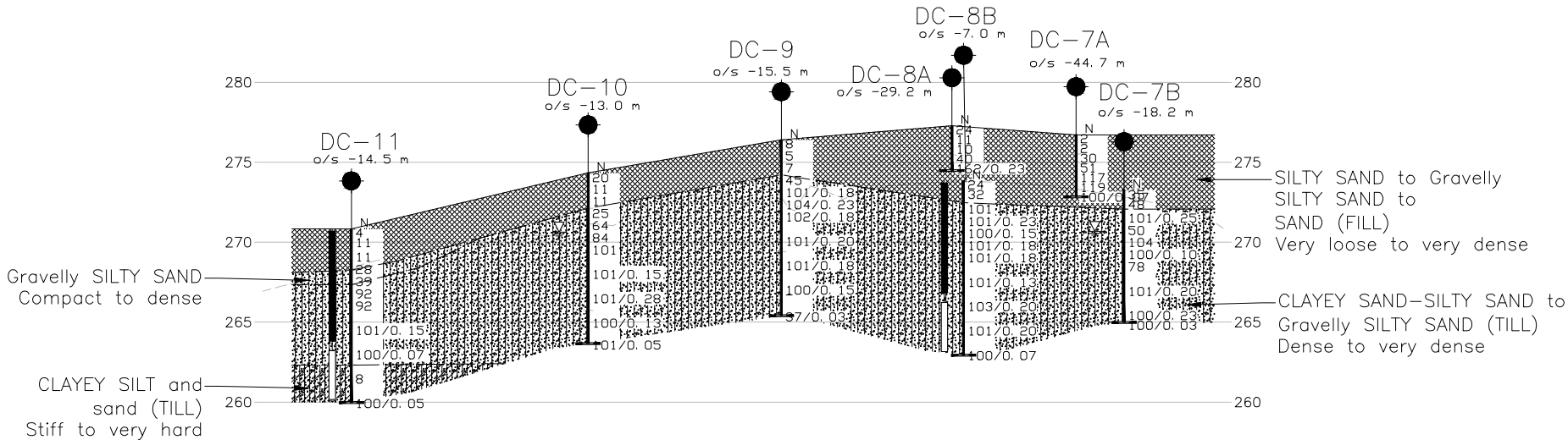
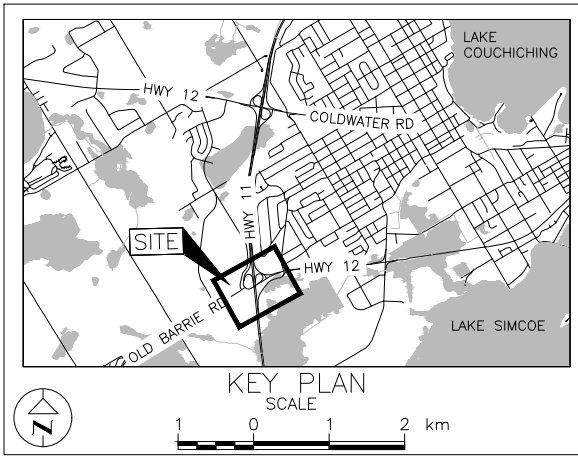
METRIC
DIMENSIONS ARE IN METRES AND/OR
MILLIMETRES UNLESS OTHERWISE SHOWN.
STATIONS IN KILOMETRES + METRES.

CONT No. _____
GWP No. 2129-18-00

HIGHWAY 11/12 INTERCHANGE
HIGH FILLS AND DEEP CUTS

SOIL STRATA

SHEET



LEGEND

- Borehole – Current Investigation
- ⊥ Seal
- ⊏ Piezometer
- N Standard Penetration Test Value
- 16 Blows/0.3m unless otherwise stated (Std. Pen. Test, 475 j/blow)
- R Refusal
- ≡ WL in piezometer (May 13, 2022)
- ≡ WL upon completion of drilling

BOREHOLE CO-ORDINATES NAD 83 MTM ZONE 10			
No.	ELEVATION	NORTHING	EASTING
DC-7A	276.7	4938703.1	308938.5
DC-7B	273.3	4938733.6	308939.4
DC-8A	277.3	4938699.0	308896.4
DC-8B	273.8	4938720.4	308889.6
DC-9	276.4	4938687.2	308842.4
DC-10	274.3	4938663.0	308787.1
DC-11	270.8	4938628.4	308722.0

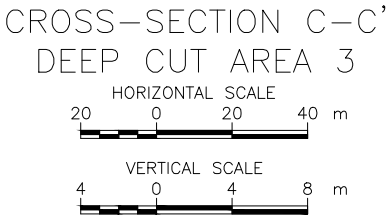
NOTES

This drawing is for subsurface information only. The proposed structure details/works are shown for illustration purposes only and may not be consistent with the final design configuration as shown elsewhere in the Contracts Documents.

The boundaries between soil strata have been established only at borehole locations. Between boreholes the boundaries are assumed from geological evidence.

REFERENCE

Base plans provided in digital format by McIntosh Perry, drawing file nos. x_197147_BASE.dwg, received May 19, 2021.
General arrangement provided in digital format by McIntosh Perry, drawing file no. 197147-00A_BR02_P03GEN.dwg, received November 5, 2021.



NO.	DATE	BY	REVISION
Geocres No. 31D11-004			
HWY. 11 AND 12		PROJECT NO. 19135676	DIST. .
SUBM'D. MH	CHKD. MH	DATE: 06/05/2024	SITE:
DRAWN: JM/SA	CHKD. AMP	APPD. DS	DWG. 3

