

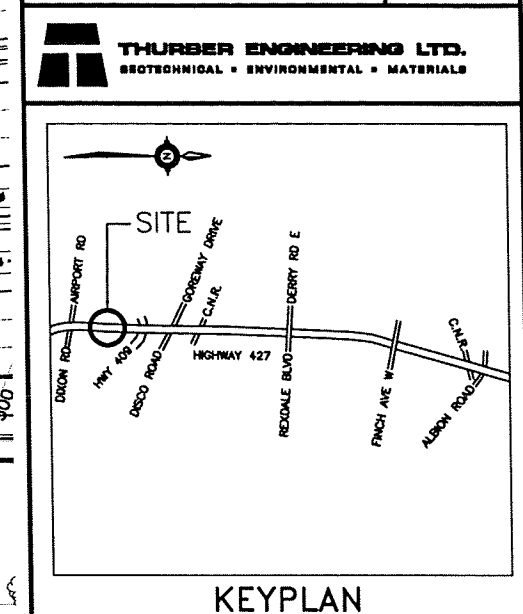
CONT No
GWP No 202-95-00

HIGHWAY 427
INSIDE WIDENING
PROPOSED SEWER PIPE CROSSINGS
BOREHOLE LOCATIONS AND SOIL STRATA

SNC-LAVALIN

THURBER ENGINEERING LTD.
GEOTECHNICAL • ENVIRONMENTAL • MATERIALS

SHEET



**KEYPLAN
LEGEND**

	Borehole
	Borehole and Cone
N	Blows /0.3m (Std Pen Test, 475J/blow)
CONE	Blows /0.3m (60° Cone, 475J/blow)
PH	Pressure, Hydraulic
	Water Level
	Head Artesian Water
	Piezometer
90%	Rock Quality Designation (RQD)
A/R	Auger Refusal

NO	ELEVATION	NORTHING	EASTING
PC-01	167.0	4 839 007.7	296 413.9
PC-02	167.3	4 839 015.8	296 432.7
PC-03	167.3	4 839 093.7	296 419.2
PC-04	167.1	4 839 099.6	296 433.7
PC-05	165.5	4 839 252.0	296 315.0
PC-06	165.8	4 839 260.0	296 340.3

-NOTES-

1) The boundaries between soil strata have been established only at Borehole locations. Between Boreholes the boundaries are assumed from geological evidence.

2) This drawing is for subsurface information only. Surface details and features are for conceptual illustration.

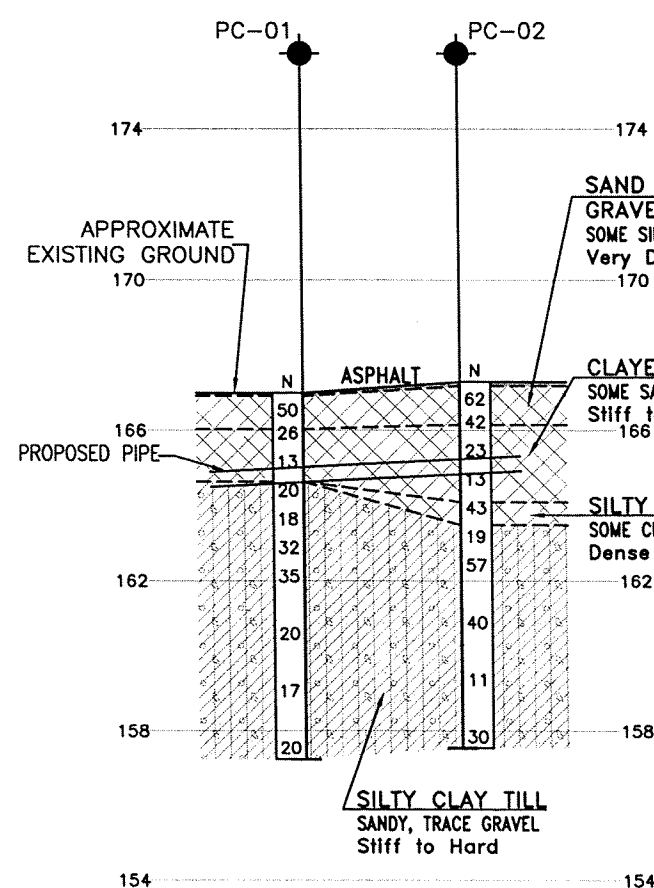
GEORES No. 30M12-292

REVISIONS	DATE	BY	DESCRIPTION

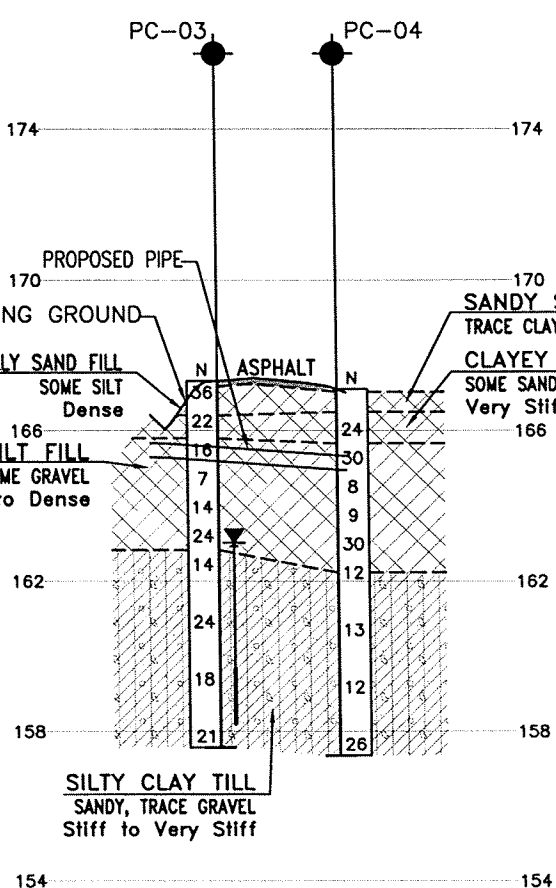
DESIGN MEF CHK PKC CODE
DRAWN MFA CHK PKC SITE

LOAD
STRUCT
DWG 1

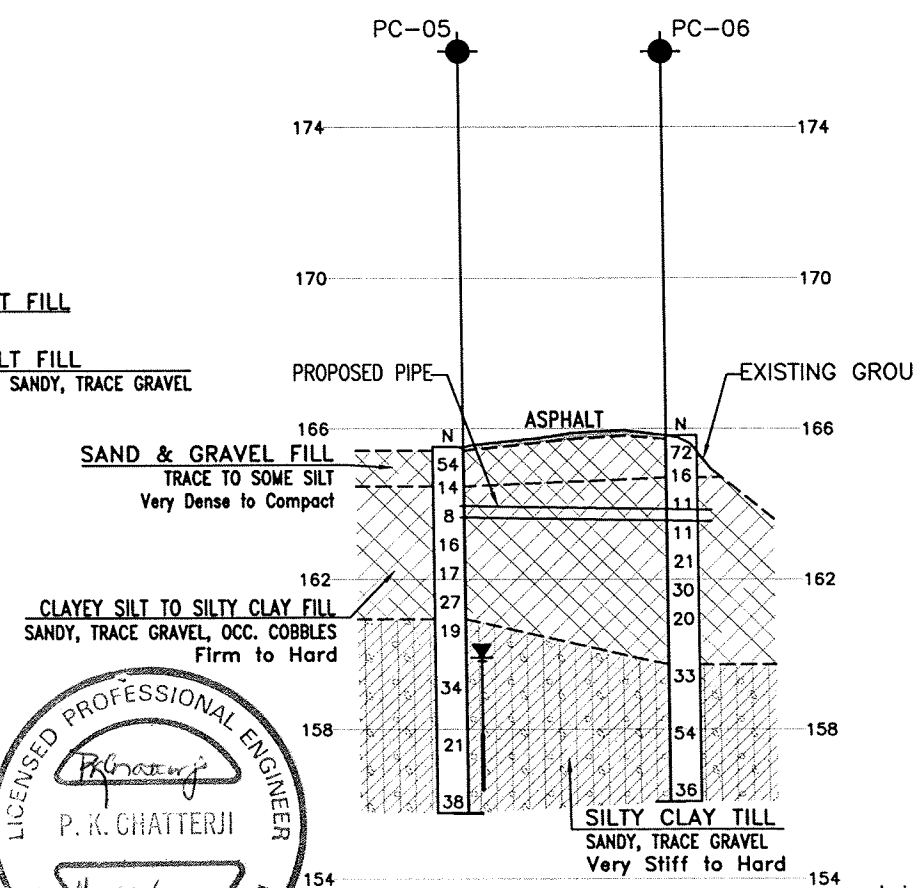
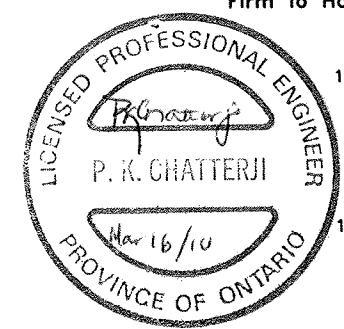
DATE JAN. 2010



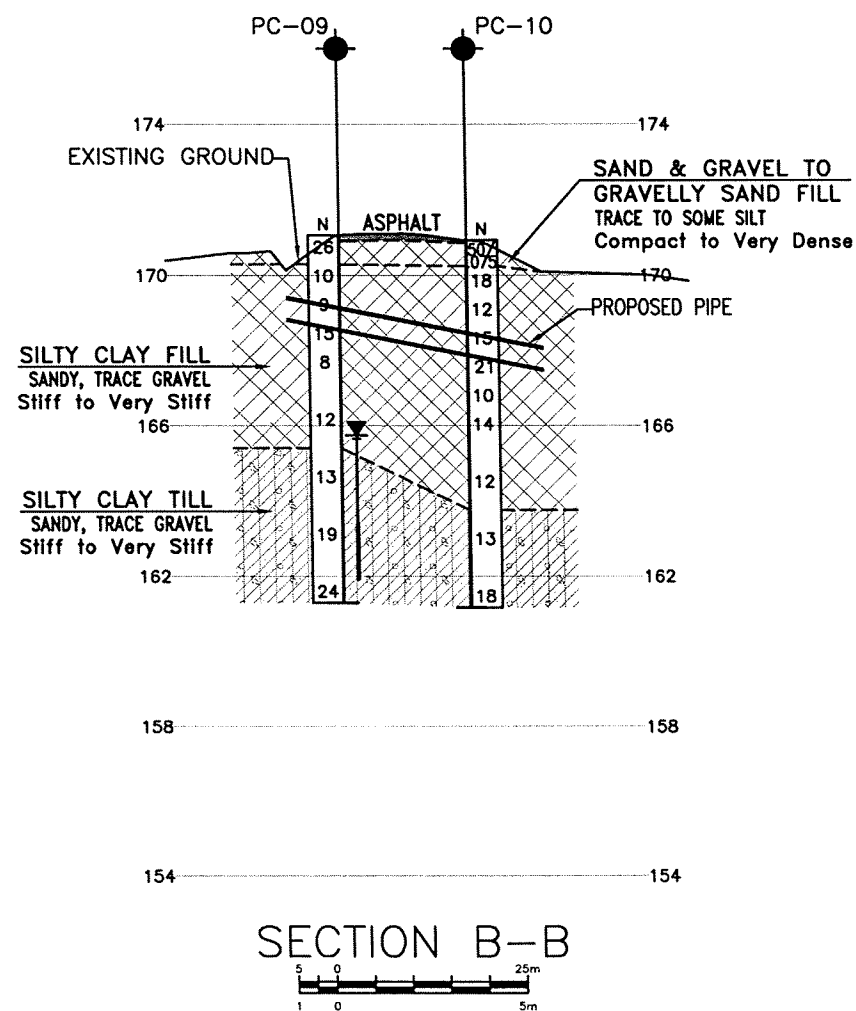
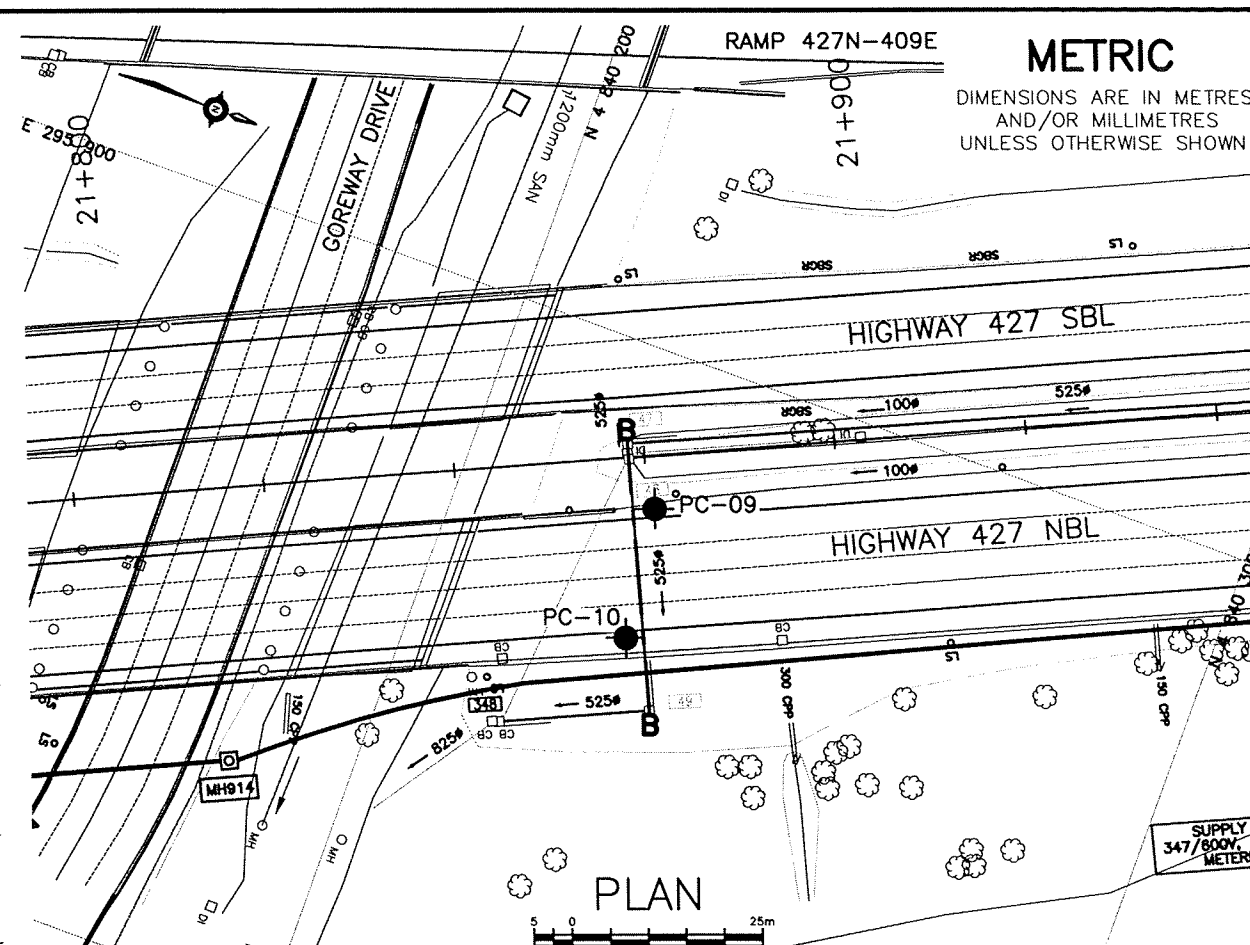
SECTION A-A



SECTION B-B



SECTION C-C

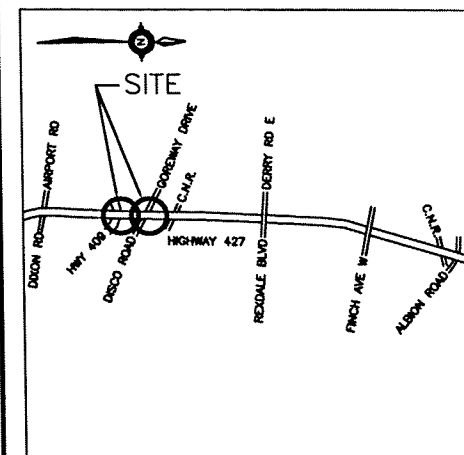


METRIC

DIMENSIONS ARE IN METRES
AND/OR MILLIMETRES
UNLESS OTHERWISE SHOWN






CONT No
GWP No 202-95-00

HIGHWAY 427
INSIDE WIDENING
PROPOSED SEWER PIPE CROSSINGS
BOREHOLE LOCATIONS AND SOIL STRATA



KEYPLAN

LEGEND

	Borehole
	Borehole and Cone
N	Blows /0.3m (Std Pen Test, 475J/blow)
CONE	Blows /0.3m (60° Cone, 475J/blow)
PH	Pressure, Hydraulic
	Water Level
	Head Artesian Water
	Piezometer
90%	Rock Quality Designation (RQD)
A/R	Auger Refusal

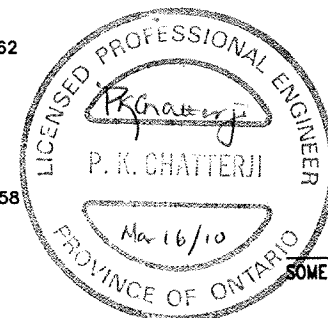
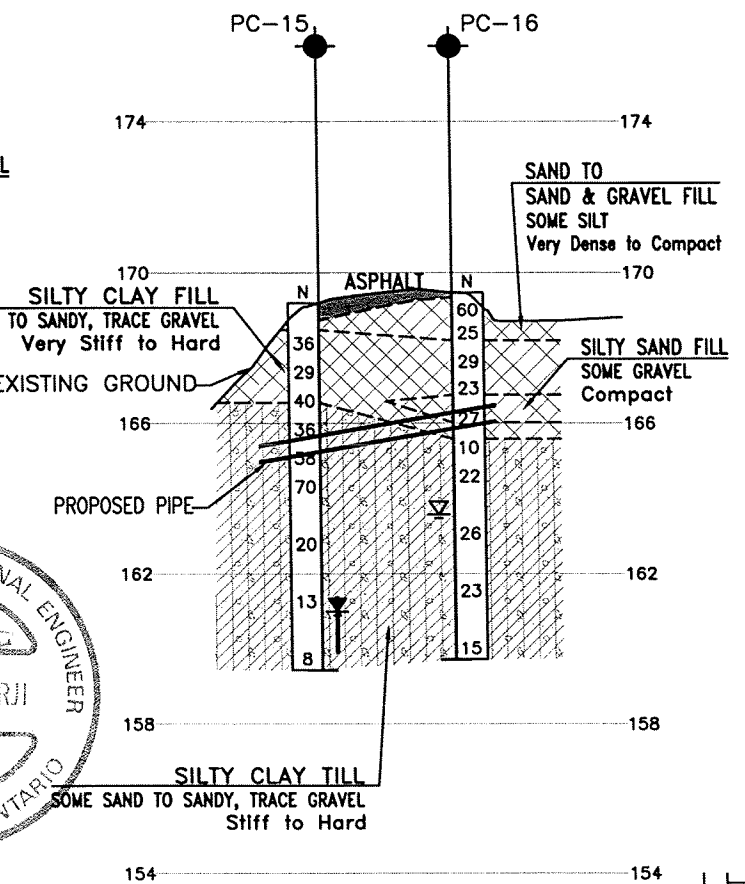
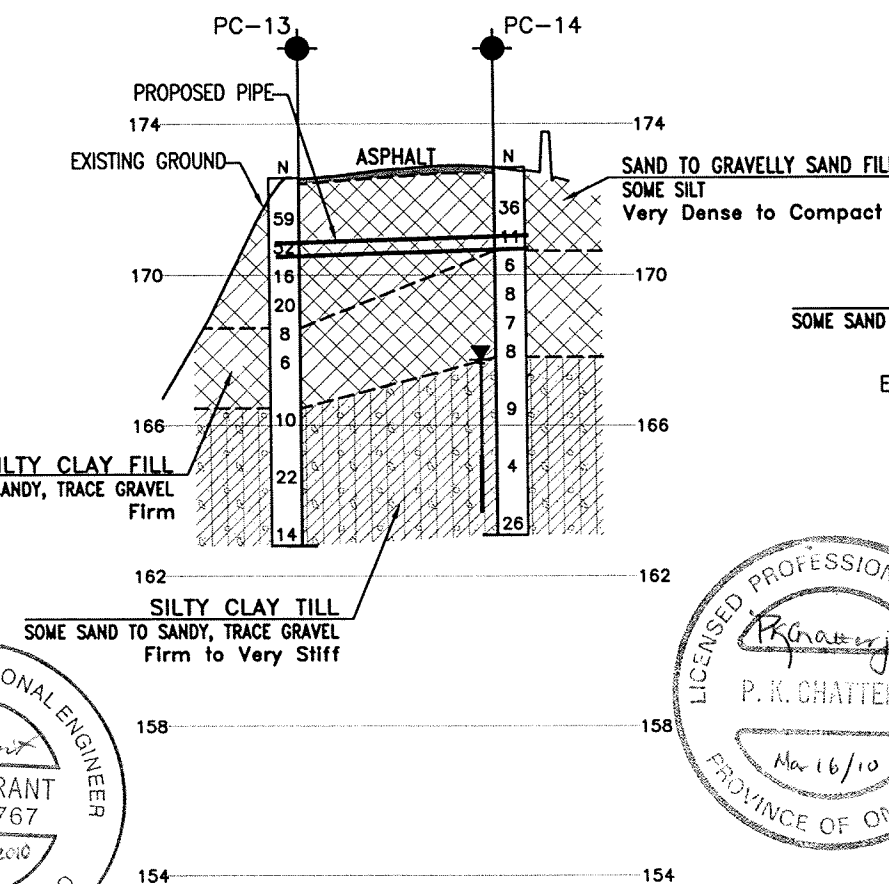
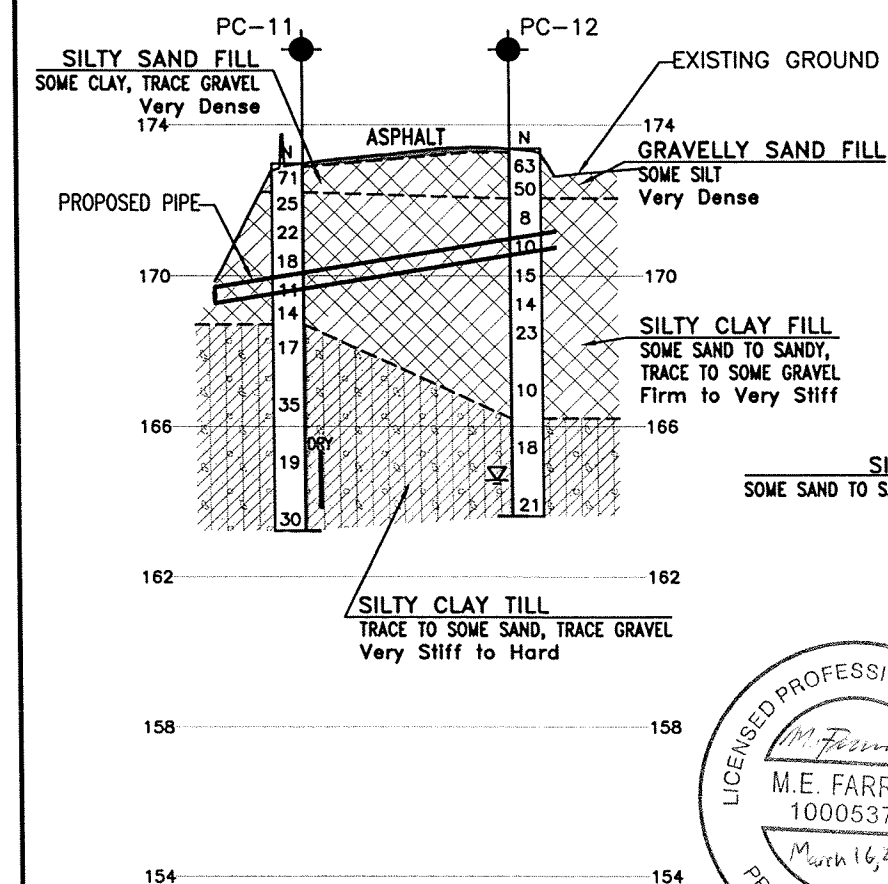
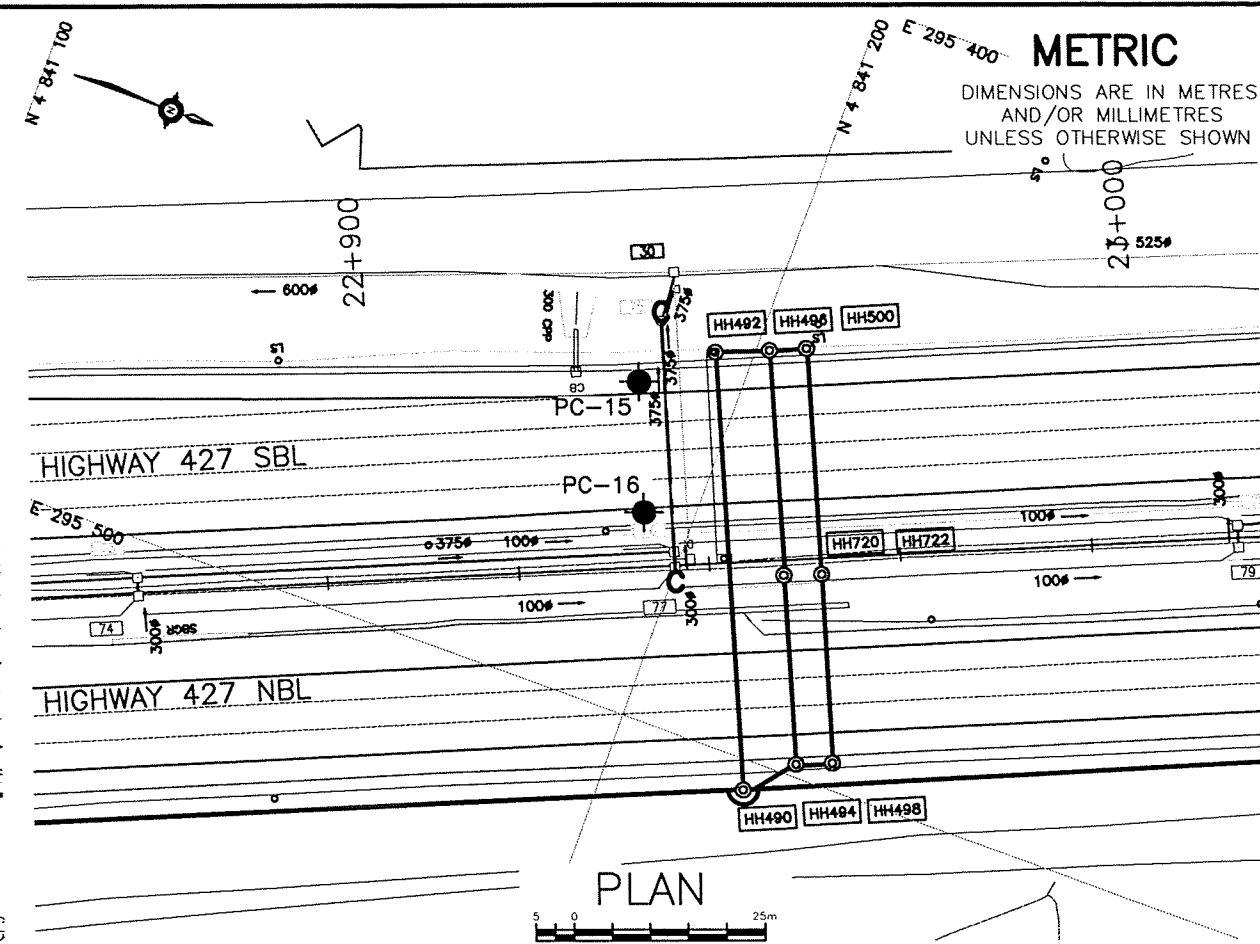
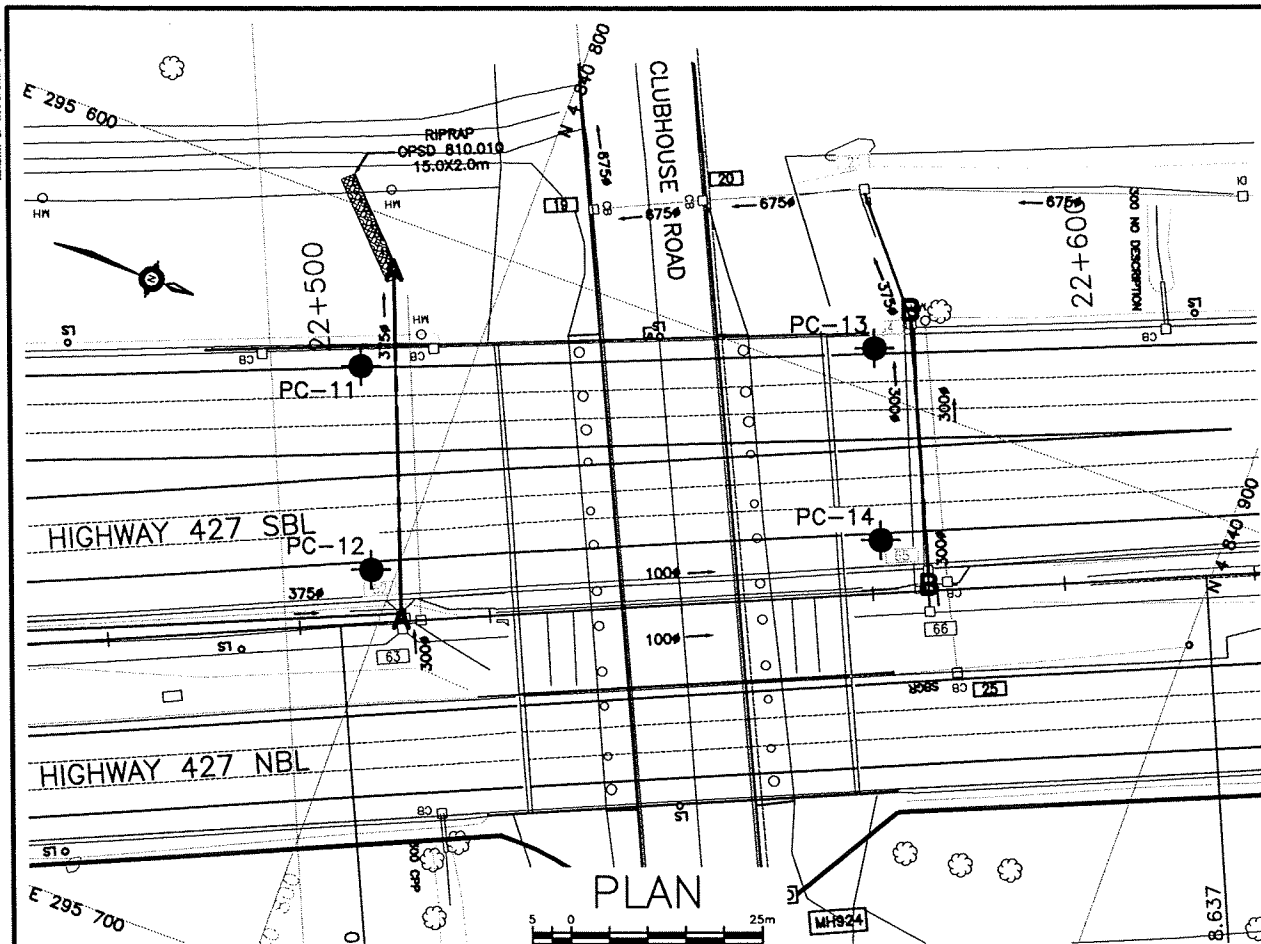
[illegible]

-NOTES-

- 1) The boundaries between soil strata have been established only at Borehole locations. Between Boreholes the boundaries are assumed from geological evidence.
- 2) This drawing is for subsurface information only. Surface details and features are for conceptual illustration.

GEOCRES No. 30M12-292

REVISIONS									
	DATE	BY	DESCRIPTION						
DESIGN	MEF	CHK	PKC	CODE	LOAD	DATE	JAN. 20		
DRAWN	MFA	CHK	PKC	SITE	ISTRUCT	IDWG	2		



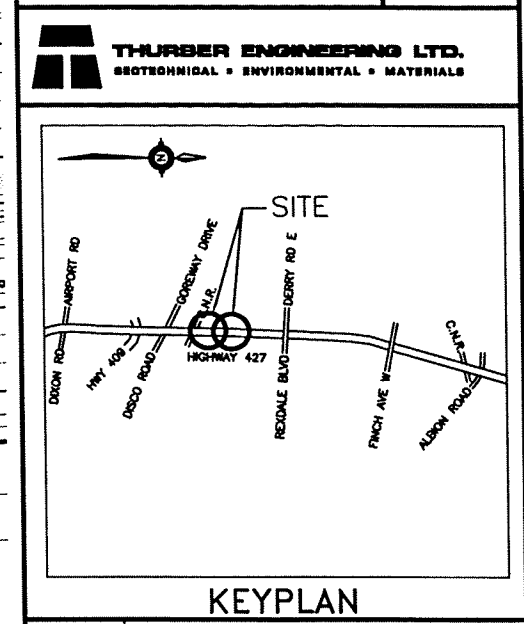
CONT No
GWP No 202-95-00

HIGHWAY 427
INSIDE WIDENING
PROPOSED SEWER PIPE CROSSINGS
BOREHOLE LOCATIONS AND SOIL STRATA

SNC-LAVALIN

THURBER ENGINEERING LTD.
GEOTECHNICAL • ENVIRONMENTAL • MATERIALS

SHEET



LEGEND

◆	Borehole
◆	Borehole and Cone
N	Blows /0.3m (Std Pen Test, 475J/blow)
CONE	Blows /0.3m (60° Cone, 475J/blow)
PH	Pressure, Hydraulic
W	Water Level
HA	Head Artesian Water
P	Piezometer
90%	Rock Quality Designation (RQD)
A/R	Auger Refusal

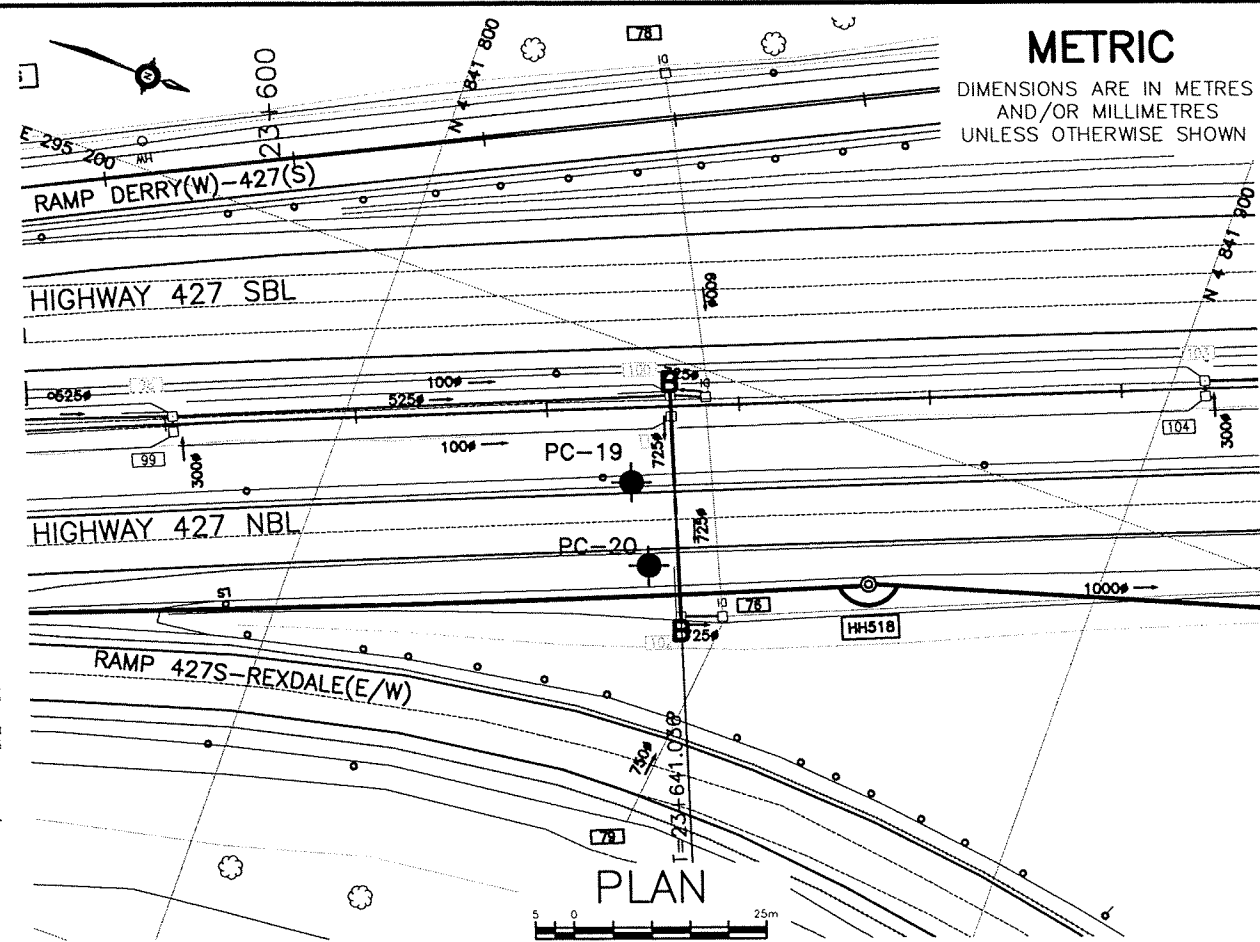
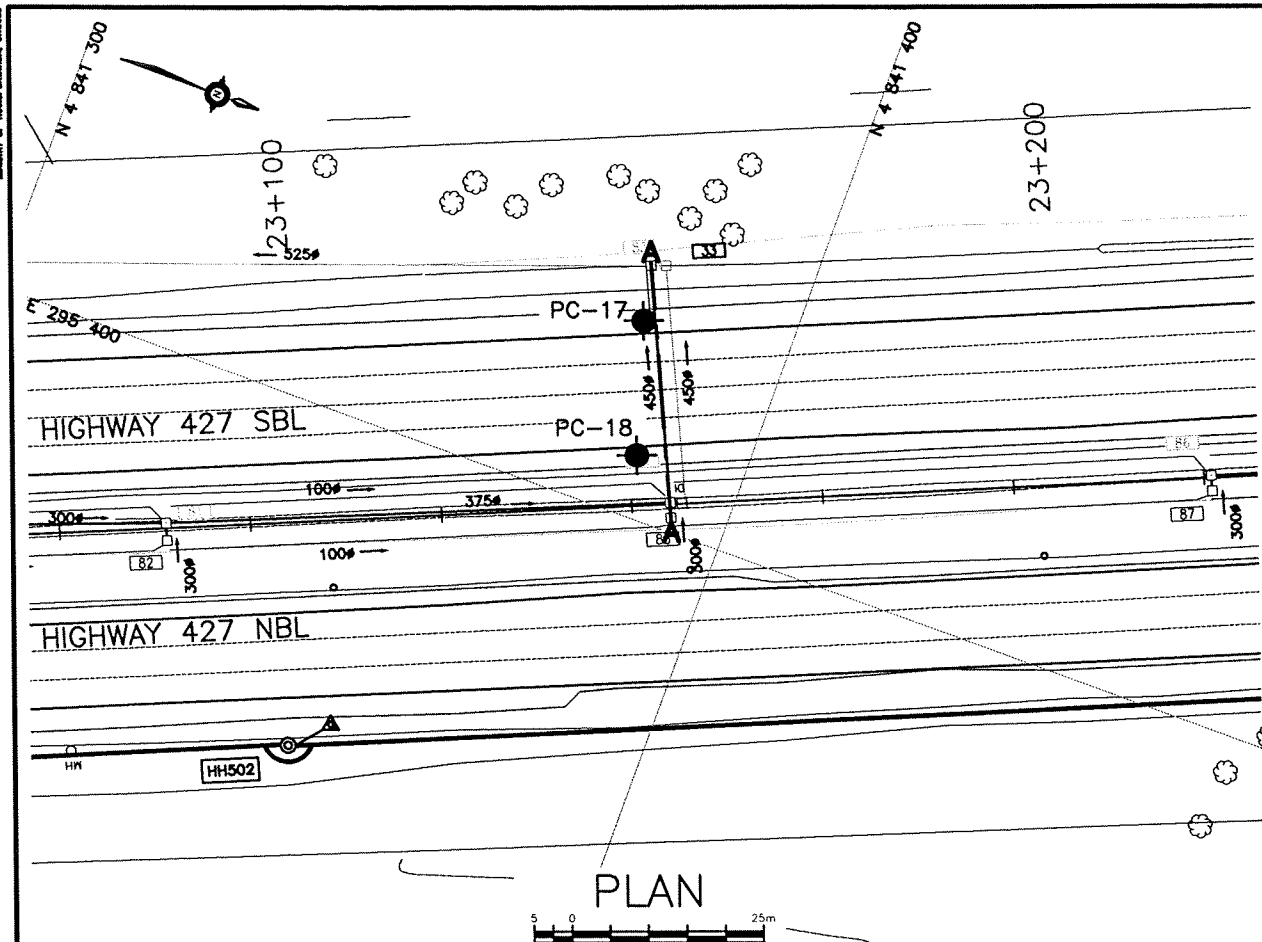
NO	ELEVATION	NORTHING	EASTING
PC-11	173.0	4 840 786.3	295 620.1
PC-12	173.4	4 840 796.8	295 645.0
PC-13	172.6	4 840 848.4	295 594.4
PC-14	172.8	4 840 857.8	295 618.1
PC-15	169.2	4 841 187.1	295 457.6
PC-16	169.5	4 841 193.5	295 473.7

- NOTES-**
- The boundaries between soil strata have been established only at Borehole locations. Between Boreholes the boundaries are assumed from geological evidence.
 - This drawing is for subsurface information only. Surface details and features are for conceptual illustration.

GEOCRES No. 30M12-292

REVISIONS	DATE	BY	DESCRIPTION
DESIGN	MEF	CHK PKC	CODE
DRAWN	MFA	CHK PKC	SITE
		STRUCT	DWG 3

DATE JAN. 2010



METRIC

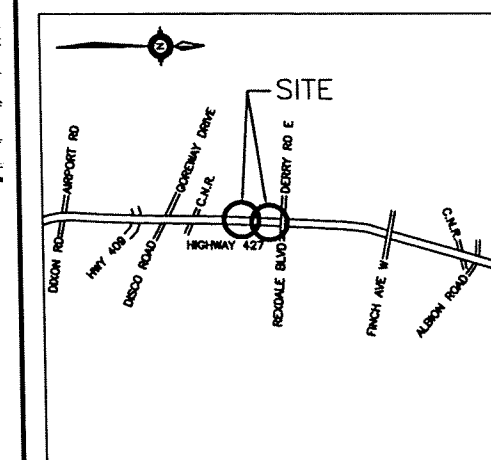
DIMENSIONS ARE IN METRES
AND/OR MILLIMETRES
UNLESS OTHERWISE SHOWN

CONT No
GWP No 202-95-00

HIGHWAY 427
INSIDE WIDENING
PROPOSED SEWER PIPE CROSSINGS
BOREHOLE LOCATIONS AND SOIL STRATA

SNC-LAVALIN

THURBER ENGINEERING LTD.
GEOTECHNICAL • ENVIRONMENTAL • MATERIALS



LEGEND

●	Borehole
⊙	Borehole and Cone
N	Blows /0.3m (Std Pen Test, 475J/blow)
CONE	Blows /0.3m (60° Cone, 475J/blow)
PH	Pressure, Hydraulic
W	Water Level
HA	Head Artesian Water
P	Piezometer
90%	Rock Quality Designation (RQD)
A/R	Auger Refusal

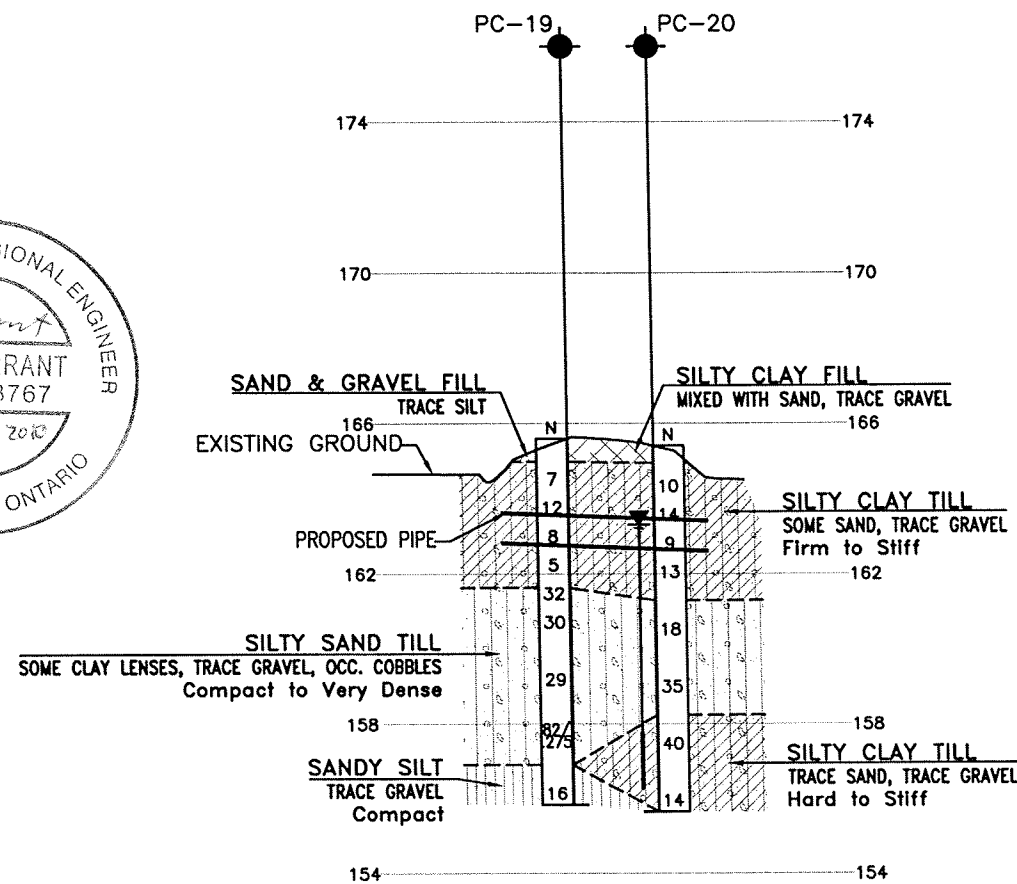
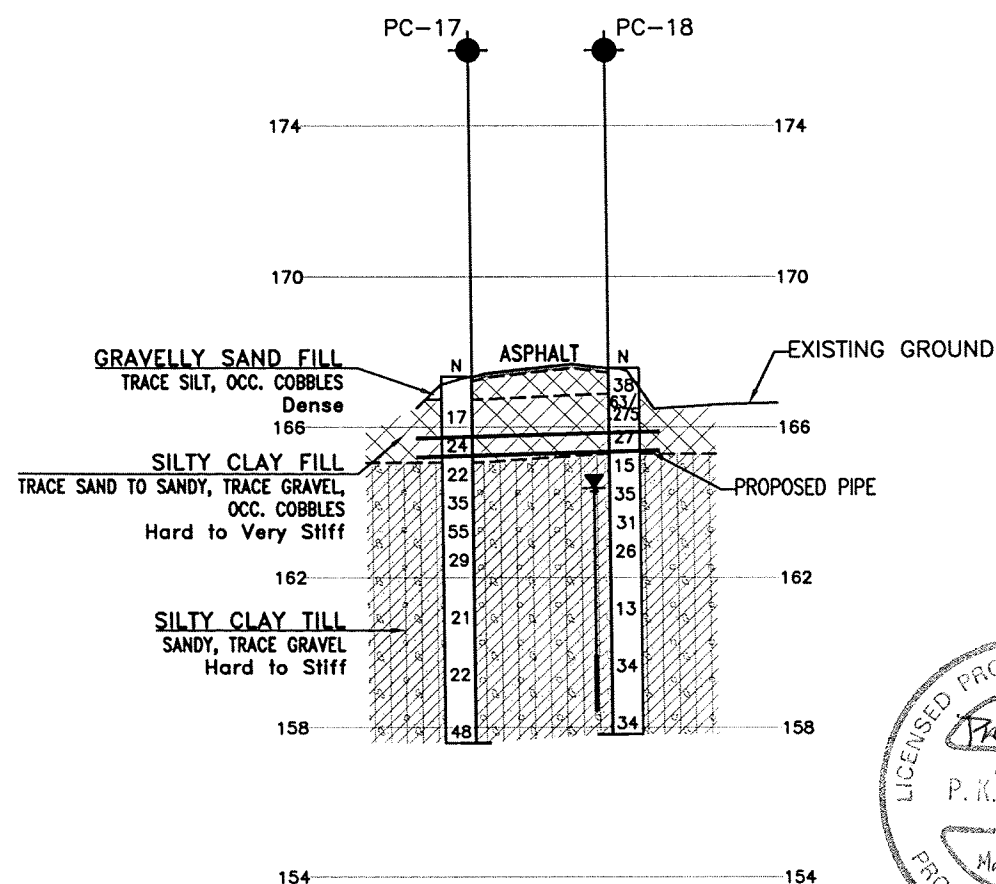
NO	ELEVATION	NORTHING	EASTING
PC-17	167.3	4 841 380.8	295 374.6
PC-18	167.6	4 841 386.0	295 391.8
PC-19	165.6	4 841 838.0	295 217.3
PC-20	165.4	4 841 843.8	295 226.9

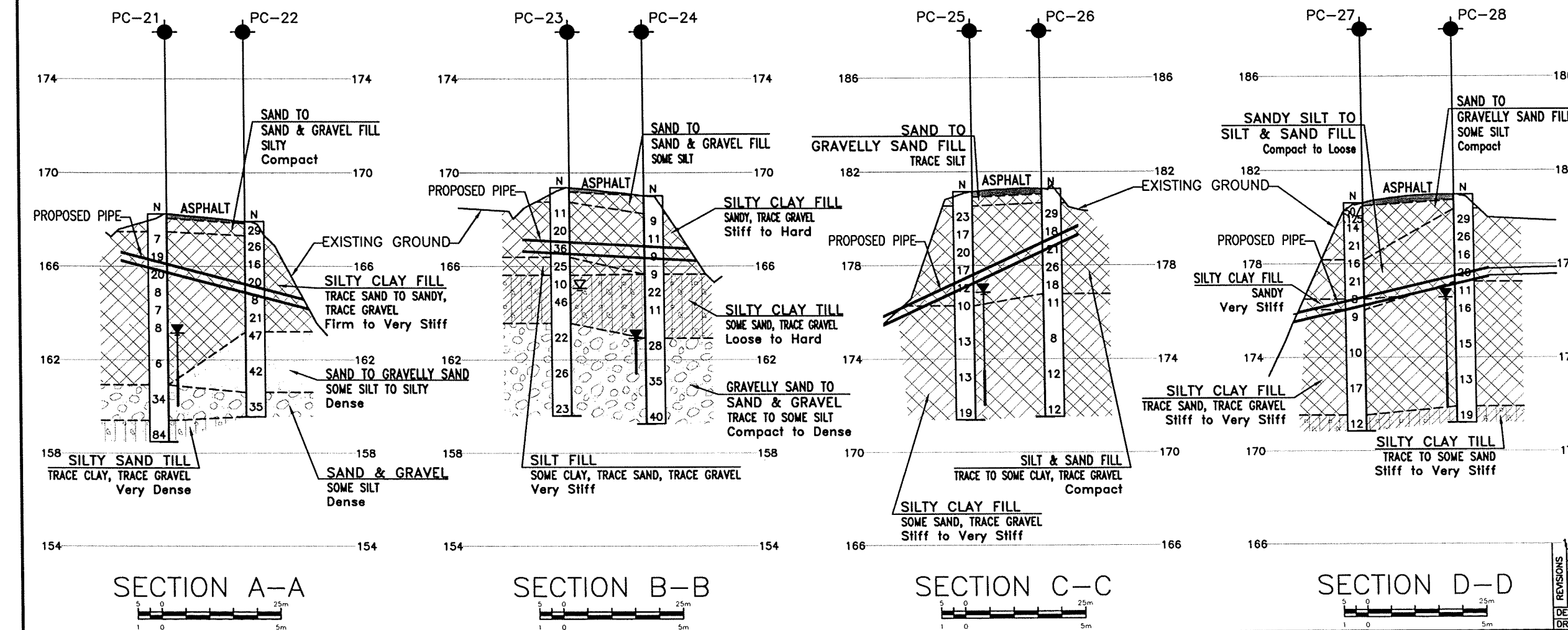
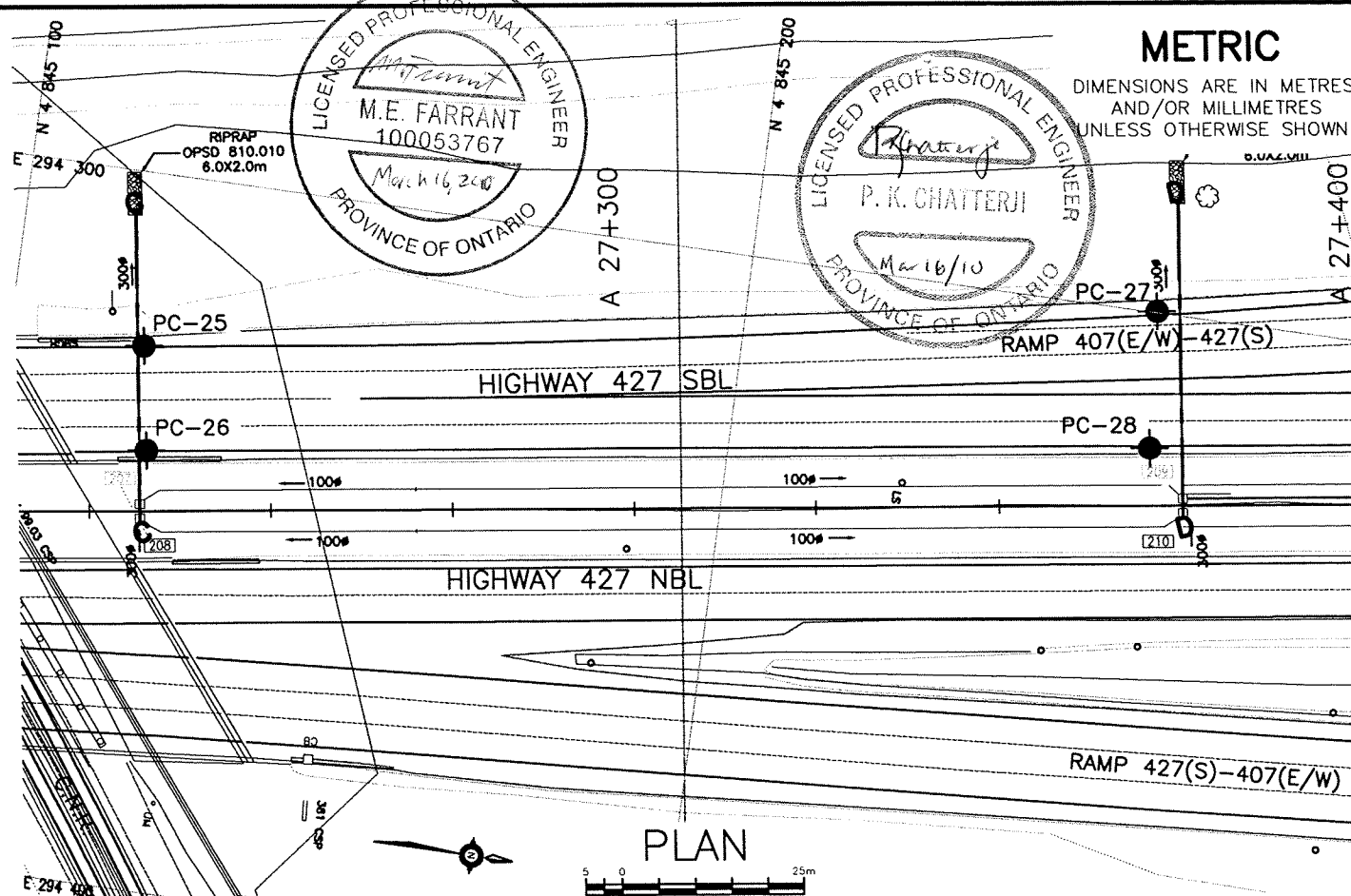
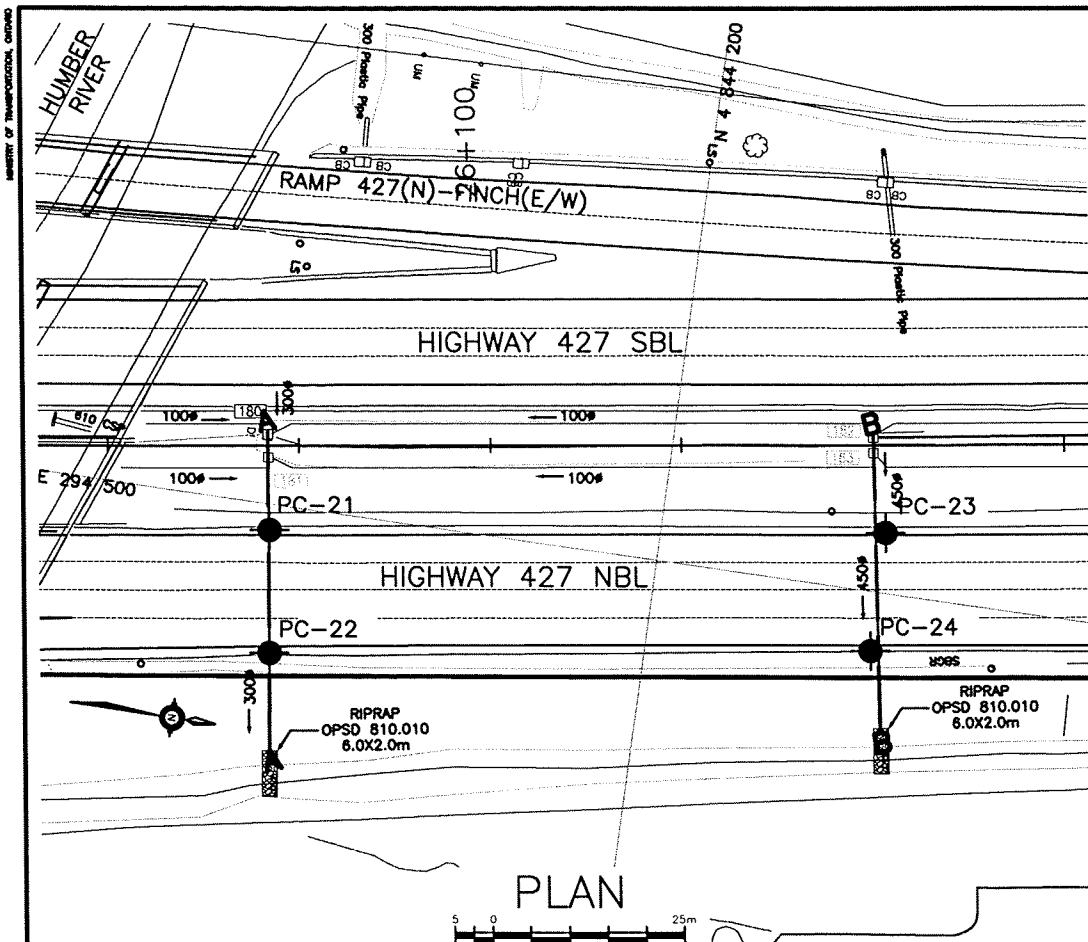
-NOTES-

- The boundaries between soil strata have been established only at Borehole locations. Between Boreholes the boundaries are assumed from geological evidence.
- This drawing is for subsurface information only. Surface details and features are for conceptual illustration.

GEOCRES No. 30M12-292

REVISIONS	DATE	BY	DESCRIPTION
DESIGN	MEF	CHK PKC	CODE
DRAWN	MFA	CHK PKC	SITE
			STRUCT
			DWG 4





CONT No
GWP No 202-95-00

HIGHWAY 427
INSIDE WIDENING
PROPOSED SEWER PIPE CROSSINGS
BOREHOLE LOCATIONS AND SOIL STRATA

SNC-LAVALIN

THURBER ENGINEERING LTD.
GEOTECHNICAL • ENVIRONMENTAL • MATERIALS

LEGEND

- Borehole
- Borehole and Cone
- N
- Blows /0.3m (Std Pen Test, 475J/blow)
- CONE
- Blows /0.3m (60° Cone, 475J/blow)
- PH
- Pressure, Hydraulic
- Water Level
- Head Artesian Water
- Piezometer
- 90%
- Rock Quality Designation (RQD)
- A/R
- Auger Refusal

NO	ELEVATION	NORTHING	EASTING
PC-21	168.2	4 844 149.4	294 503.4
PC-22	167.9	4 844 151.6	294 519.6
PC-23	169.4	4 844 228.9	294 492.0
PC-24	169.0	4 844 229.1	294 507.8
PC-25	181.2	4 845 118.7	294 324.3
PC-26	181.3	4 845 120.9	294 338.7
PC-27	180.6	4 845 255.6	294 299.8
PC-28	181.0	4 845 257.0	294 318.8

-NOTES-

- The boundaries between soil strata have been established only at Borehole locations. Between Boreholes the boundaries are assumed from geological evidence.
- This drawing is for subsurface information only. Surface details and features are for conceptual illustration.

GEOCRES No. 30M12-292

REVISIONS

DATE	BY	DESCRIPTION
DESIGN	MEF	CHK PKC CODE
DRAWN	MFA	CHK PKC SITE

DATE JAN. 2010

DWG 5

