



Subsurface Conditions Baseline Report

Trenchless Sanitary Crossing East of Stanfield Road, QEW Widening from East of Cawthra Road to The East Mall, Cities of Mississauga and Etobicoke, Ministry of Transportation, Ontario, GWP 2102-13-00 & 2432-13-00

Submitted to:

AECOM Canada Ltd.

30 Leek Crescent
Richmond Hill, Ontario
L4B 4N4

Submitted by:

Golder Associates Ltd.

6925 Century Avenue, Suite #100
Mississauga, Ontario
L5N 7K2

+1 905 567 4444

1530382/7000

December 2021

GEOCRES No.: 30M11-318

Distribution List

1 PDF - AECOM Canada Ltd.

1 PDF - Golder

Table of Contents

1.0 INTRODUCTION	1
2.0 SITE AND PROJECT DESCRIPTION	2
3.0 SOURCES OF INFORMATION	2
3.1 Subsurface Data	2
3.2 Geological References	2
3.3 Publications	3
4.0 SITE GEOLOGY AND SUBSURFACE CONDITIONS.....	3
4.1 Regional Geology	3
4.2 Baseline Engineering Characteristics of Soil	4
4.2.1 Pavement	4
4.2.2 Fill (Class A)	5
4.2.3 Native Granular Deposits (Class B)	6
4.2.4 Native Cohesive Deposits (Class C)	7
4.2.5 Glacial Till (Class D)	8
4.2.6 Residual Soil (Class E)	9
4.2.7 Shale	9
4.2.7.1 Hard Layers	10
4.2.7.2 Natural Gas	11
4.3 Groundwater Conditions	12
4.4 Cobbles, Boulders and Other Obstructions	12
5.0 EXISTING UTILITIES.....	13
6.0 CLASSIFICATION OF ANTICIPATED GROUND BEHAVIOUR	14
7.0 CLOSURE	16
REFERENCES	

TABLES

Table 1: Baseline Geotechnical Parameters for Fill (Class A)	5
Table 2: Baseline Geotechnical Parameters for Native Granular Deposits (Class B).....	6
Table 3: Baseline Geotechnical Parameters for Cohesive Deposits (Class C).....	7
Table 4: Baseline Geotechnical Parameters for Glacial Till (Class D)	8
Table 5: Baseline Geotechnical Parameters for Residual Soil (Class E)	9
Table 6: Baseline Parameters for Shale	9
Table 7: Recorded Groundwater Levels in Standpipe Piezometer	12
Table 8: Baseline Boulder Parameters	13
Table 9: Ground Behaviour Classification	14

Tables Following Text of Report

Table A: Description of Engineering Soil Classes

PLATES

Plate 1: Baseline Distribution of the Percentage of Hard Layers	10
Plate 2: Baseline Distribution of the Hard Layer Thicknesses.....	11

FIGURES

Figure 1: Baseline Grain Size Distribution, Fill (Class A)
Figure 2: Baseline Grain Size Distribution, Granular Deposits (Class B)
Figure 3: Baseline Grain Size Distribution, Cohesive Deposits (Class C)
Figure 4: Baseline Plasticity Chart, Cohesive Deposits (Class C)
Figure 5: Baseline Grain Size Distribution, Glacial Till (Class D)
Figure 6: Baseline Plasticity Chart, Glacial Till (Class D)
Figure 7: Baseline Grain Size Distribution, Residual Soil (Class E)
Figure 8: Baseline Plasticity Chart, Residual Soil (Class E)

DRAWINGS

Drawing 1: QEW-Cawthra to East Mall Widening, Sanitary Sewer Relocation, Borehole Locations
Drawing 2: QEW-Cawthra to East Mall Widening, Sanitary Sewer Relocation, Interpreted Baseline Stratigraphic Profile

1.0 INTRODUCTION

Golder Associates Ltd. (Golder) has been retained by AECOM Canada Ltd. (AECOM) on behalf of the Ministry of Transportation, Ontario (MTO) to prepare this Subsurface Conditions Baseline Report (SCBR) for a sanitary sewer installation east of Stanfield Road, associated with the widening of Queen Elizabeth Way (QEW) from Cawthra Road to The East Mall in Mississauga and Etobicoke, in the Regional Municipality of Peel and City of Toronto, Ontario. This report consolidates and summarizes the results of geotechnical explorations and testing carried out at the site. This report is to be read together with the Contract Drawings and Specifications (Contract Documents) prepared by the project designers (AECOM) and the MTO. Bidders shall refer to the Contract Documents for the order of precedence in the event of conflicting information.

The purpose of this report is to describe and summarize the subsurface conditions anticipated at the project site and to establish the baseline subsurface conditions for the Contract. It forms the basis on which to judge whether or not the conditions encountered during construction are materially different from those anticipated at the time of bidding.

This report provides figures that summarize data and presents baseline subsurface conditions and geotechnical engineering parameters. For individual test results, the bidder is to refer to the Foundation Investigation Report for this sanitary sewer installation site, prepared by Golder (GEOCREC No. 30M11-312). Where alignments and stations are shown on the figures or referenced in the text, they are based on the General Arrangement drawings provided by AECOM. The stations referred to in this SCBR are approximate and the Contractor is expected to refer to the Contract Documents for the exact station, coordinates and details of existing and proposed features, structures and buried utilities.

This SCBR is intended to:

- Provide a subsurface conditions baseline for bidding the work;
- Assist the project Owner in reviewing the Contractor's submittals; and,
- Establish a subsurface conditions baseline that will be used to resolve disputes and claims related to subsurface conditions.

This SCBR has been prepared for a Design-Bid-Build construction contract for the installation of the reinforced concrete low pressure rated pipe for the sanitary sewer at the above-noted site and does not provide discussions on the anticipated ground behaviour in relation to specific construction means and methods because the Contractor is responsible for and will select the construction means and methods. This report does describe anticipated natural soil behaviour in the absence of any support or modification provided by the Contractor's means and methods. Therefore, the content of this report departs from typical practice, and this SCBR is not to be considered the equivalent of a Geotechnical Baseline Report, as defined in ASCE (2007).

The provision of baseline conditions in the Contract is not a warranty that the baseline conditions will be encountered; rather, the baseline conditions represent a contractual basis for the Owner and the Contractor to use when interpreting the differing site conditions clause in the General Conditions and Special Conditions of the Contract. The Contractor is to rely on this report for bidding and construction planning purposes related to anticipated ground and groundwater conditions and the Contractor is to plan construction and select equipment to fully address the expected baseline conditions identified in this report.

This SCBR is applicable only to the sanitary sewer installation section that will cross beneath the QEW using tunnelling methods and is not applicable to other elements of the QEW Widening from East of Cawthra Road to the East Mall.

2.0 SITE AND PROJECT DESCRIPTION

Two sanitary sewer crossing installations are proposed under the QEW from the North Service Road, approximately 20 m east of Stanfield Road, to Haig Blvd. in the City of Mississauga, Ontario, as shown on Drawing 1. Residential areas are located to the north and south of QEW right-of-way in the area of the sanitary sewer crossings. The Dixie Outlet Mall is located to the southeast and Applewood Village Plaza is located to the northwest of the proposed crossing. The QEW grade at the site is approximately Elevation 106 m, and the present ground surface on either side of the QEW is at approximate Elevation 105 m.

3.0 SOURCES OF INFORMATION

The documents listed in this section have been used in developing the SCBR, but these are not to be considered part of the SCBR and these publications are referenced herein for information purposes only.

Where precise determination of deposit boundaries or geotechnical engineering parameters are necessary for the safety and stability of the works, or for other construction concerns, or in instances where specialized geotechnical engineering properties of soils or rock are required but are not presented in the SCBR, these boundaries and parameters are to be identified and determined by supplementary investigations and testing by the Contractor prior to construction. This SCBR provides baseline conditions only for the physical subsurface conditions and does not provide baseline conditions for the chemistry of the soil, rock or groundwater.

3.1 Subsurface Data

Subsurface data gathered from multiple sources have been used in development of this report. The principal source of data is the Foundation Investigation Report, referenced below. The subsurface materials as characterized in the Foundation Investigation Report were defined at specific sample locations within the boreholes, and the Contractor is expected to review the specific subsurface data available in the Foundation Investigation Report. However, the interpretation of geotechnical engineering properties and parameters for the deposits and the stratigraphy as interpreted between samples provided in this SCBR are the baselines for this project. In the event of conflict between the Foundation Investigation Report and the SCBR, the SCBR shall be given precedence for the purpose of tendering and evaluating claims related to ground conditions.

- Golder Associates Ltd. "Foundation Investigation Report, Trenchless Sanitary Crossing East of Stanfield Road, QEW Widening from East of Cawthra Road to the East Mall, Cities of Mississauga and Etobicoke, Ministry of Transportation, Ontario, GWP 2102-13-00 & 2432-13-00", dated August 2021, GEOCREs No. 30M11-312.

3.2 Geological References

The geological publications referenced in this document and listed below are for general information purposes only.

- Brennand, T. A. "Urban Geology of Toronto and Surrounding Area" in *Urban Geology of Canadian Cities*. GAC Special Paper 42, pp. 323-352. Karrow, P.F., and White O.L., Editors, Geological Association of Canada Special Paper 42, Geological Association of Canada, Newfoundland, 1998.
- Chapman, L.J. and Putnam, D.F. *The Physiography of Southern Ontario*. 3rd Edition, Ontario Geological Survey, Special Volume 2, 1984. Ontario Ministry of Natural Resources.

3.3 Publications

The publications referenced in this document, as listed below, are for general information purposes only.

- ASCE (2007). *Geotechnical Baseline Reports for Construction: Suggested Guidelines*. The Technical Committee on Geotechnical Reports of the Underground Technology Research Council, R.J. Essex, chairman, ASCE, Reston, VA, 62 pp.
- Boone, S.J., Westland, J., Busbridge, J.R., and Garrod, B. (1998). "Prediction of Boulder Obstructions", In *Tunnels and Metropolises, Proceedings of World Tunnel Congress 1998*, Sao Paulo, Brazil. A. Negro and A. Ferreira, Editors, Balkema, Rotterdam, pp. 817-822.
- Canadian Geotechnical Society (2006). *Canadian Foundation Engineering Manual*, 4th Edition. BiTech Publishers Ltd., Richmond, British Columbia.
- Heuer, R. E. (1974). "Important Ground Parameters in Soft Ground Tunneling", in *Proceedings Specialty Conference on Subsurface Explorations for Underground Excavations and Heavy Construction*, ASCE, Reston, VA., pp. 152-167.
- Kulhawy, F.H. and P.W. Mayne. (1990). *Manual on Estimating Soil Properties for Foundation Design*. Report EPRI-EL6800. Palo Alto, CA, Electric Power Research Institute.
- Ministry of the Environment Ontario (2005). Water Well Information System, Version 2.01. Hydrogeology of Southern Ontario, Second Edition. http://www.ene.gov.on.ca/envision/techdocs/4800e_index.htm
- Poot, S., Boone, S.J., Westland, J., and Pennington, B. (2000). "Predicted Boulder Frequency Compared to Field Observations During Construction", in *Proceedings of the 50th Canadian Geotechnical Conference*, Montreal, pp. 47-54.

4.0 SITE GEOLOGY AND SUBSURFACE CONDITIONS

4.1 Regional Geology

The interpreted and simplified stratigraphic profile shown on Drawing 2 is the baseline stratigraphy for this project and is a simplification of the subsurface conditions encountered at and between the borehole locations.

Although interpreted strata boundaries are illustrated on Drawing 2, it must be understood that the stratigraphic boundaries illustrated on Drawing 2 are inferred from non-continuous sampling, observations of drilling progress and results of Standard Penetration Tests, and therefore represent transitions between soil types rather than exact planes of geological change; actual contacts between deposits will typically be gradational as a result of natural geologic processes. Further, the boundaries shown on Drawing 2 are illustrated for the indicated section line and are based on projection of the subsurface data onto this line. Variations in the deposit boundaries and the boundaries of major intra-deposit zones from those illustrated must be anticipated both along and perpendicular to the profile line. Therefore, the contractor's selection of construction equipment and procedures must be made to accommodate variations in the deposit boundaries as described in this SCBR. Where precise determination of deposit boundaries is necessary for the safety and stability of the works, or for other construction concerns, they are to be verified by supplementary investigations and testing by the Contractor prior to construction.

In summary, the stratigraphy at the borehole locations at this sanitary sewer alignment consists of a layer of asphalt underlying a layer of non-cohesive fill. The fill is underlain by a deposit of silty sand to clayey sand-silty sand, which is in turn underlain by a sandy clayey silt to clayey silt and sand till deposit, followed by a clayey silt residual soil deposit. All boreholes are underlain by shale bedrock.

Within this SCBR, the stratigraphy is defined and described based on the likely geologic origin, grain size distribution, plasticity characteristics and relative elevation. This approach is used to avoid geologic unit classifications based on geologic age or stage of glacial advance. In some instances, geologic nomenclature, although correct in defining the geologic origin and age of a particular layer, does not necessarily convey indications of material type or potential engineering behaviour. Precedence in this SCBR has therefore been given to naming the different soil layers based on relative elevation, grain size distribution and plasticity characteristics.

4.2 Baseline Engineering Characteristics of Soil

This section of the SCBR provides baseline geotechnical engineering parameters to be used for design of temporary works and for selection of equipment and construction methods. The baseline geotechnical engineering parameters presented are those considered relevant for the proposed installation of a sanitary sewer. Baseline values are provided consistent with 10th, 50th, and 90th percentiles, as a means for quantitatively describing the statistical distribution of the parameter values and their natural variability. In some cases, the percentiles are based directly on statistical evaluation of available data and, in other cases, these values are supplemented by judgement based on local and regional experience with these soil and rock types. While the 50th percentile value can be used for some design purposes, the range represented by the 10th to 90th percentiles must also be considered as variability in physical properties is intrinsic to the nature of earth materials and is to be taken into account for estimating quantities, selection of equipment, and selection of construction means and methods.

Engineering Classes A to E, specific to this report and identified with colours on the baseline stratigraphic profile, group soil types in relation to anticipated natural behaviour during construction if exposed and in the absence of support or other modification provided through the Contractor's means and methods. The Engineering Classes used in this report are described in Table A following the text of this SCBR and in subsequent sections of this SCBR.

4.2.1 Pavement

Where boreholes were advanced through the existing pavement structures, an approximately 150 millimetre (mm) to 240 mm thick layer of asphalt pavement was encountered at ground surface in Boreholes NW3-1, NW3-2, 21-9, 21-10 and 21-11. While asphalt pavement materials were encountered within some of the boreholes, this SCBR does not provide baseline characterizations of thicknesses, extents or locations of pavement materials.

4.2.2 Fill (Class A)

An approximately 0.3 m to 2.5 m thick layer of fill was encountered at the ground surface in Borehole 21-8, and underlying the asphalt in Boreholes NW3-1, NW3-2, 21-9, 21-10, and 21-11. The surface of the granular fill was encountered at depths ranging from 0 m to 0.2 m below ground surface (between Elevations 105.7 m and 104.5 m) and extends to depths ranging from 0.5 m to 2.7 m (between Elevations 105.0 m and 102.0 m). The fill is comprised of silty sand to sand and gravel. The fill is considered to be associated with the local road structure, QEW construction, nearby utility trenches and development of the adjacent residential and commercial lands.

A baseline grain size distribution envelope of Fill (Class A) is presented on Figure 1. Baseline classification and engineering parameters for Fill (Class A) are provided in Table 1 below, based on the site-specific data as well as experience with similar native deposits in the project vicinity.

Table 1: Baseline Geotechnical Parameters for Fill (Class A)

Parameter	10 th Percentile ¹	50 th Percentile ¹	90 th Percentile ¹
SPT "N"-Value ²	4	7	20
Water Content, w_n (%)	13	16	20
D_{10} (mm)	0.003	0.017	0.130
D_{60} (mm)	0.120	0.170	4.000
Coefficient of Uniformity, C_u	3	19	96
Wet Unit Weight, kN/m^3	18	19	20
Effective Angle of Internal Friction, ϕ' (degrees)	25	27	30
Estimated Permeability, k (m/s)	1×10^{-6}	1×10^{-5}	5×10^{-5}

- 1) While for any given sample, percentages of gradation categories (e.g., gravel, sand, fines) will add to 100 per cent, percentile values do not necessarily add to 100 per cent because these statistics represent ranges of separate measurement parameters.
- 2) Baseline blow counts are based on SPT "N"-values measured for 0.3 m of penetration; for tests that did not penetrate a full 0.3 m, the blow count values were increased in proportion to the fraction of a standard 0.3 m penetration actually achieved, to a maximum equivalent SPT "N"-value of 150 blows per 0.3 m. Where a value of 150 blows per 0.3 m penetration is indicated within this report, this must also be interpreted that these values represent effective refusal to penetration of SPT equipment.

4.2.3 Native Granular Deposits (Class B)

A 4.1 m to 5.1 m thick layer of Native Granular Deposits consisting of silt to sandy silt to silty sand to sand was encountered underlying the fill in all boreholes. The top of the Native Granular Deposits was encountered between Elevations 105.0 m and 102.0 m. Borehole NW3-2 was terminated within the Native Granular Deposits deposit at Elevation 100.3 m.

A baseline grain size distribution envelope of the Native Granular Deposits (Class B) is presented on Figure 2. Baseline classification and engineering parameters for the Native Granular Deposits Soils (Class B) are provided in Table 2 below, based on the site-specific data as well as experience with similar native deposits in the project vicinity.

Table 2: Baseline Geotechnical Parameters for Native Granular Deposits (Class B)

Parameter	10 th Percentile ¹	50 th Percentile ¹	90 th Percentile ¹
SPT "N"-Value ²	7	22	37
Water Content, w_n (%)	7	15	22
Plastic Limit, PL (%)	Non-plastic	Non-plastic	15
Liquid Limit, LL (%)	Non-plastic	Non-plastic	18
Plasticity Index, PI	Non-plastic	Non-plastic	3
D_{10} (mm)	0.002	0.024	0.090
D_{60} (mm)	0.030	0.115	1.600
Coefficient of Uniformity, C_u	2	7	36
Wet Unit Weight, kN/m^3	18	20	21
Effective Angle of Internal Friction, ϕ' (degrees)	28	32	37
Estimated Permeability, k (m/s)	1×10^{-7}	5×10^{-6}	5×10^{-5}

- 1) While for any given sample, percentages of gradation categories (e.g., gravel, sand, fines) will add to 100 per cent, percentile values do not necessarily add to 100 per cent because these statistics represent ranges of separate measurement parameters.
- 2) Baseline blow counts are based on SPT "N"-values measured for 0.3 m of penetration; for tests that did not penetrate the full 0.3 m, the blow count values were increased in proportion to the fraction of a standard 0.3 m penetration actually achieved to a maximum equivalent SPT "N"-value of 150 blows per 0.3 m. Where a value of 150 blows per 0.3 m penetration is indicated within this report, this must also be interpreted that these values represent effective refusal to penetration of standard penetration testing equipment.

4.2.4 Native Cohesive Deposits (Class C)

A 0.5 m to 1.8 m thick layer of Native Cohesive Deposits consisting of clayey silt was encountered underlying the Native Granular Deposits in Boreholes NW3-1, 21-8, 21-9, 21-10 and 21-11. The Native Cohesive Deposit was encountered between Elevations 100.9 m and 96.4 m.

The baseline grain size distribution envelope for the Native Cohesive Deposits (Class C) is presented on Figure 3. The baseline envelope for Atterberg Limits is presented on Figure 4, which indicates that these materials are generally low plasticity. Baseline values for other geotechnical engineering parameters for the Native Cohesive Deposits are provided in Table 3 below, based on the site-specific data as well as experience with similar deposits in the project vicinity.

Table 3: Baseline Geotechnical Parameters for Cohesive Deposits (Class C)

Parameter	10 th Percentile ¹	50 th Percentile ¹	90 th Percentile ¹
SPT "N"-Value ²	3	4	20
Water Content, w_n (%)	16	19	32
D_{10} (mm)	<0.001	<0.001	<0.001
D_{60} (mm)	0.005	0.010	0.030
Coefficient of Uniformity, C_u	6	10	21
Wet Unit Weight, kN/m^3	20	20	22
Effective Angle of Internal Friction, ϕ' (degrees)	32	34	36
Estimated Permeability, k (m/s)	1×10^{-8}	5×10^{-8}	1×10^{-7}

- 1) While for any given sample, percentages of gradation categories (e.g., gravel, sand, fines) will add to 100 per cent, percentile values do not necessarily add to 100 per cent because these statistics represent ranges of separate measurement parameters.
- 2) Baseline blow counts are based on SPT "N"-values measured for 0.3 m of penetration; for tests that did not penetrate the full 0.3 m, the blow count values were increased in proportion to the fraction of a standard 0.3 m penetration actually achieved to a maximum equivalent SPT "N"-value of 150 blows per 0.3 m. Where a value of 150 blows per 0.3 m penetration is indicated within this report, this must also be interpreted that these values represent effective refusal to penetration of standard penetration testing equipment.

4.2.5 Glacial Till (Class D)

A 1.5 m thick Glacial Till deposit was encountered underlying the Native Cohesive Deposits in Borehole 21-11. The Glacial Till deposit consists of sandy clayey silt with varying proportions of sand and gravel. The surface of the Glacial Till was encountered at Elevation 96.4 m.

The baseline grain size distribution envelope for the Glacial Till (Class C) deposit is presented on Figure 5. The baseline envelope for Atterberg Limits is presented on Figure 6, which indicates that these materials are generally low plasticity. Above the groundwater level, the Glacial Till will be fissured and have a blocky structure when exposed. Baseline values for other geotechnical engineering parameters for the Glacial Till are provided in Table 4 below, based on the site-specific data as well as experience with similar deposits in the project vicinity.

The presence of cobbles and boulders in the Glacial Till has been inferred based on observations during drilling and local knowledge of this geologic layer. Baseline characterization of cobbles and boulders is provided in a later section of this SCBR.

Table 4: Baseline Geotechnical Parameters for Glacial Till (Class D)

Parameter	10 th Percentile ¹	50 th Percentile ¹	90 th Percentile ¹
SPT "N"-Value ²	7	12	53
Water Content, w_n (%)	12	14	17
D_{10} (mm)	<0.001	<0.001	0.002
D_{60} (mm)	0.040	0.065	0.400
Coefficient of Uniformity, C_u	53	65	77
Wet Unit Weight, kN/m^3	19	19	20
Effective Angle of Internal Friction, ϕ' (degrees)	35	35	36
Estimated Permeability, k (m/s)	5×10^{-7}	1×10^{-8}	5×10^{-8}

- 1) While for any given sample, percentages of gradation categories (e.g., gravel, sand, fines) will add to 100 per cent, percentile values do not necessarily add to 100 per cent because these statistics represent ranges of separate measurement parameters.
- 2) Baseline blow counts are based on SPT "N"-values measured for 0.3 m of penetration; for tests that did not penetrate the full 0.3 m, the blow count values were increased in proportion to the fraction of a standard 0.3 m penetration actually achieved to a maximum equivalent SPT "N"-value of 150 blows per 0.3 m. Where a value of 150 blows per 0.3 m penetration is indicated within this report, this must also be interpreted that these values represent effective refusal to penetration of standard penetration testing equipment.

4.2.6 Residual Soil (Class E)

A 0.7 m to 1.1 m thick Residual Soil layer was encountered underlying the Native Cohesive Deposit in Borehole 21-8, 21-9, 21-10 and 21-11. The Residual Soil consists of clayey silt with varying proportions of sand, gravel and shale fragments. The surface of the Residual Soil deposit was encountered between Elevations 97.2 m and 94.9 m.

The baseline grain size distribution envelope of the Residual Soil (Class D) is presented on Figure 4. The baseline envelope for Atterberg Limits is presented on Figure 8 that indicates that these materials are slightly plastic. Baseline classification and engineering parameters for the Residual Soil are provided in Table 4 below, based on the site-specific data as well as experience with similar deposits in the project vicinity.

Table 5: Baseline Geotechnical Parameters for Residual Soil (Class E)

Parameter	10 th Percentile ¹	50 th Percentile ¹	90 th Percentile ¹
SPT "N"-Value ²	15	29	150
Water Content, w_n (%)	8	13	26
D_{10} (mm)	<0.001	0.001	0.018
D_{60} (mm)	0.006	0.050	9.500
Coefficient of Uniformity, C_u	13	36	907
Wet Unit Weight, kN/m^3	18	19	21
Effective Angle of Internal Friction, ϕ' (degrees)	34	34	35
Estimated Permeability, k (m/s)	1×10^{-8}	5×10^{-8}	5×10^{-7}

- 1) While for any given sample, percentages of gradation categories (e.g., gravel, sand, fines) will add to 100 per cent, percentile values do not necessarily add to 100 per cent because these statistics represent ranges of separate measurement parameters.
- 2) Baseline blow counts are based on SPT "N"-values measured for 0.3 m of penetration; for tests that did not penetrate a full 0.3 m, the blow count values were increased in proportion to the fraction of a standard 0.3 m penetration actually achieved, to a maximum equivalent SPT "N"-value of 150 blows per 0.3 m. Where a value of 150 blows per 0.3 m penetration is indicated within this report, this must also be interpreted that these values represent effective refusal to penetration of SPT equipment.

4.2.7 Shale

Shale was encountered and core samples were recovered in Boreholes 21-8, 21-9, and 21-11 between depths of 9.5 m to 10.5 m below ground surface (Elevations 95.9 m to 94.2 m). The Shale is highly weathered to fresh, thinly laminated, fine to very fine-grained, non-porous, very weak to weak and grey with very strong to medium strong limestone interbeds. Baseline values for engineering parameters for the Shale are provided in Table 5 below.

Table 6: Baseline Parameters for Shale

Parameter	10 th Percentile ¹	50 th Percentile ¹	90 th Percentile ¹
Total Core Recovery (TCR), %	45	100	100
Solid Core Recovery (SCR), %	21	100	100
Rock Quality Designation (RQD), %	21	96	100

4.2.7.1 Hard Layers

For baseline purposes the relative proportion of cored shale versus cored harder limestone or siltstone layers referred to as “hard layers” within the bedrock as logged in the drillholes is shown in Plate 1. The frequency is based on the percentage of hard layers in each drill run cored and does not include the completely to moderately weathered shale bedrock that was sampled in split-spoons. The data used for this assessment was based on the information obtained from drillholes 21-8, 21-9, and 21-11 located along the proposed sanitary alignment.

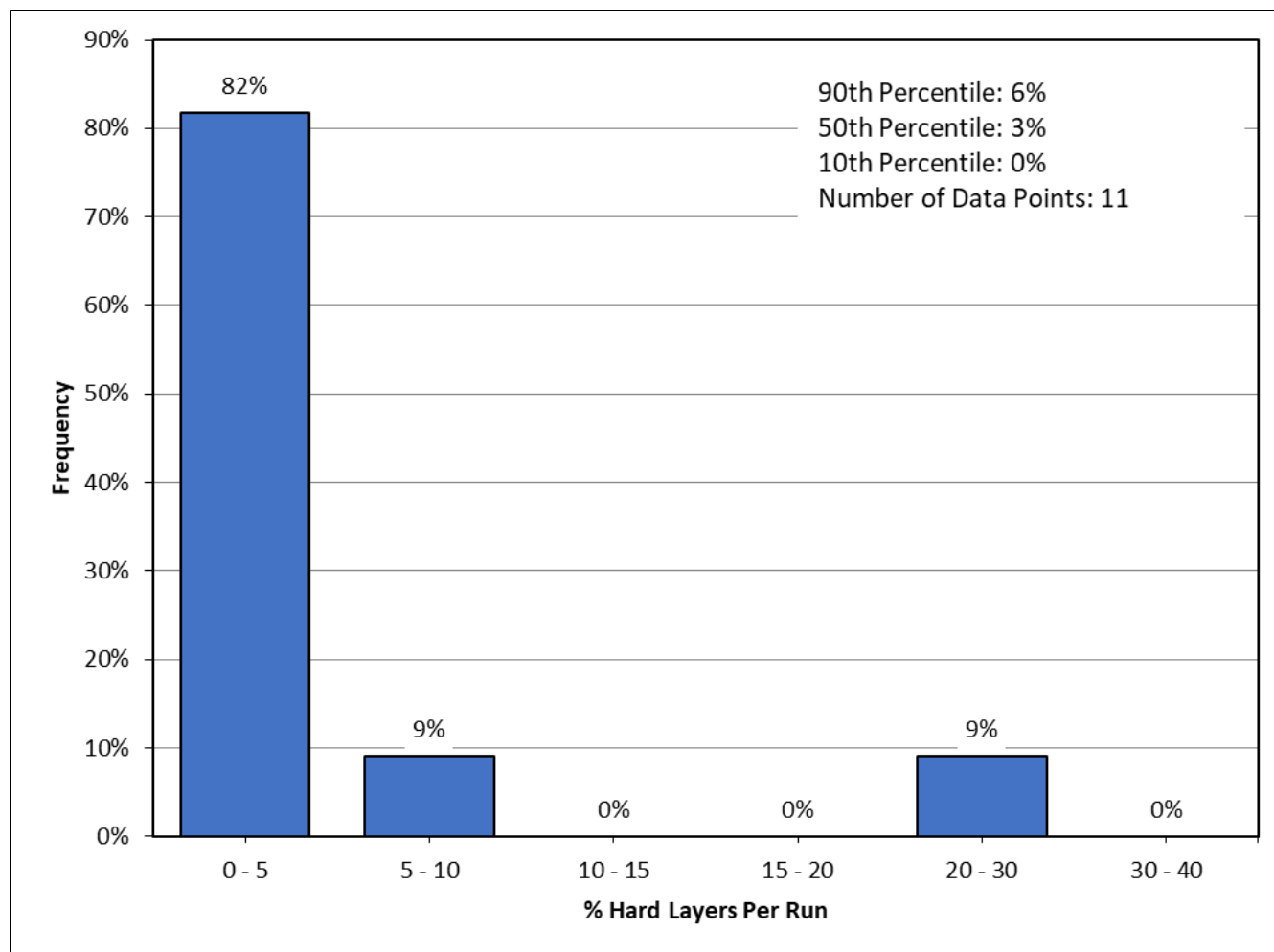


Plate 1: Baseline Distribution of the Percentage of Hard Layers

For the purposes of this baseline, the maximum thickness for these hard layers refers to a discrete interbed of pure limestone or siltstone. For baseline purposes, Plate 2 shows the frequency for the thickness of the “hard layers” that can be expected to be encountered within the bedrock.

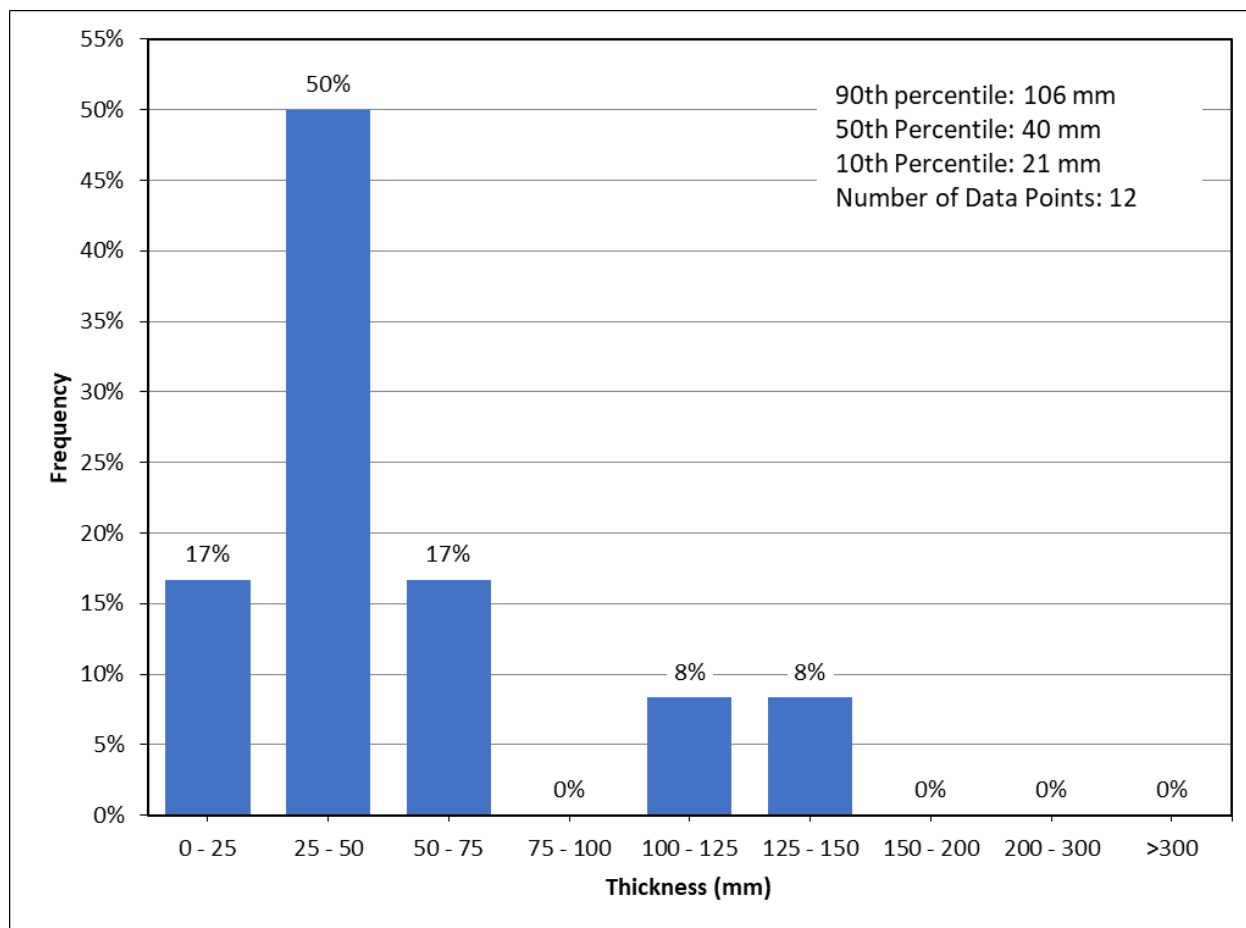


Plate 2: Baseline Distribution of the Hard Layer Thicknesses

4.2.7.2 *Natural Gas*

Methane and hydrogen sulphide are known to be present in the shale bedrock of the Georgian Bay formation and have been encountered in the soils of Southern Ontario, typically in granular layers capped by cohesive tills.

Methane forms an explosive mixture with air and is a potential hazard for excavation and construction work and it should be assumed that it will be encountered in the bedrock and soil at this site. Changes in groundwater pressure which may be caused by dewatering or seepage into excavations/underground spaces can lead to migration/release of gaseous or dissolved methane. Therefore, the absence of methane in a particular area should not be construed to indicate that there is no risk of the presence of methane in the future or in other site areas.

The tunnel should be considered, according to the OSHA Underground Construction (Tunneling) Regulations (29 CFR Part 1926.800, "Tunnels and Shafts.") as "potentially gassy".

For baseline purposes it should be assumed that methane gas could be encountered anywhere along the tunnel alignment or in the shafts. For baseline purposes the Contractor should expect to encounter gas in numerous small pockets that can be vented within 2 hours and up to a total of 4 hours in a 24-hour period.

As a consequence of this designation, the Specifications include specific provisions for gas monitoring and specific requirements for selected underground equipment.

4.3 Groundwater Conditions

Water levels were observed in the open boreholes upon completion of drilling operations or prior to rock coring operations and were between 2.1 m and 3.7 m below ground surface (between Elevations 103.3 m and 101.8 m) in the boreholes. However, the water level observed in the open boreholes during and/or upon completion of drilling does not necessarily represent the longer-term, stabilized groundwater level at the site. Standpipe piezometers were installed in Boreholes 21-8 and 21-11, and the measured groundwater levels in the standpipe piezometers are summarized in the table below:

Table 7: Recorded Groundwater Levels in Standpipe Piezometer

Borehole No.	Depth to Water Level (m)	Groundwater Elevation (m)	Date of Measurement
21-8	2.6	102.8	February 3, 2021
	2.5	102.9	March 30, 2021
	2.6	102.8	May 13, 2021
	2.7	102.7	July 6, 2021
21-11	2.9	101.8	June 15, 2021
	2.9	101.8	June 28, 2021
	3.0	101.7	June 29, 2021

A baseline groundwater level is provided on Drawing 2. For baseline purposes, groundwater levels are to be expected to fluctuate seasonally in response to changes in precipitation and snow melt to as much as 1 m above or below the baseline groundwater level. Any water infiltrating through the roadway and embankment fill is also expected to be inhibited by and therefore perched within the Fill and Native Granular Deposits overlying the Native Cohesive Deposits and Glacial Till.

4.4 Cobbles, Boulders and Other Obstructions

With the exception of processed (crushed and screened) sand and gravel road base, the materials through which construction will be performed are glacially derived and therefore will contain cobbles and boulders. Cobbles are defined as rock fragments that cannot pass through a screen with 75 mm square openings, but that are less than 300 mm in maximum dimension. Boulders are defined as rock fragments with their maximum dimension equal to or greater than 300 mm. Boulders and cobbles were not sampled or cored in the boreholes advanced at the site; however, based on past experience within the Greater Toronto Area, the combined total volume of individual boulders, known as the Boulder Volume Ratio (BVR), within glacial till soils typically ranges between 0.15 percent and 0.3 percent of the excavated volume. Typically, the size distribution of boulders is such that between 5 and 10 boulders of varying sizes are found for every cumulative cubic metre of boulder rock. The number of boulders per cubic metre of cumulative boulder volume encountered is the Boulder Number Ratio (BNR). For baseline purposes, the BVR, BNR and Boulder Maximum Size values are provided in Table 8 below.

Table 8: Baseline Boulder Parameters

Parameter	Granular Deposits (Class B)	Glacial Till and Clayey Silt Residual Soils (Class C and D)
Boulder Volume Ratio (BVR)	0.02%	0.3%
Boulder Number Ratio (BNR)	10	10
Boulder Maximum Size (m ³)	0.5	1.0

For example, using the BVR and BNR provided above for an excavated volume of 100 cubic metres (m³) of Glacial Till (Class C) (by drilling or other excavation equipment), a cumulative 0.3 m³ of boulder rock manifested in approximately 3 boulders will be anticipated. For baseline purposes, where calculations result in a fractional number of boulders, the number is to be rounded up to the nearest integer. The Contractor is to consider penetration, breaking, or removal of cobbles routine requirements of construction and not to be accounted for separately. For baseline purposes, as part of the boulder volumes given in Table 7 above, one boulder with a diameter between 0.8 m and 1.0 m should be expected to be encountered along the tunnel alignment.

For baseline purposes, the cobbles and boulders will be composed of gneissic and dioritic rocks of the Canadian Shield. The uniaxial compressive strength of the rock forming cobbles and boulders will range from about 120 MPa to 200 MPa (10th and 90th percentiles) with a 50th percentile value of about 180 MPa.

The date of construction of the original QEW, North Service Road and South Service Road fill placement is unknown; as well, typical construction practices with regards to clearing and grubbing of the site prior to fill placement at the time of construction are unknown. No records of construction of the highway or local roadways (site records/journals, photographs, as-constructed drawings, etc.) were available at the time of writing this SCBR. For baseline purposes it is to be expected that where construction penetrates fill materials there will be debris consisting of broken concrete, reinforcing bars, logs, stumps and brush from previous clearing and grubbing operations and cobbles and boulders buried in the fill. The contractor must select a construction method that is capable of removing these types of obstructions in fill materials.

5.0 EXISTING UTILITIES

Utilities present along the project alignment, including but not limited to lighting, communications cables, storm sewers, and natural gas pipelines, must be accurately located and either protected or relocated. Depending upon the location, utilities relocated to avoid the trenchless construction could be affected by the settlement trough created by excavations required for trenchless construction. The Contractor is responsible for protecting existing and newly relocated utilities from settlement and horizontal displacement. Protection of utilities, support of excavations, instrumentation and monitoring have been specified elsewhere in the Contract Documents to control, measure and document the amount of displacement at these sites.

6.0 CLASSIFICATION OF ANTICIPATED GROUND BEHAVIOUR

This section of the SCBR describes the Engineering Classes of the various soil types as identified along the proposed primary liner alignment, and their anticipated behaviour if exposed and unsupported. The interpreted baseline stratigraphy and the baseline piezometric level along the sanitary sewer alignment are shown on Drawing 2.

The anticipated ground behaviour presented in this report is described using the Ground Behaviour Classification System provided below in Table 8. The Tunnelman's Ground Classification System (Heuer, 1974), as derived from the original system by Terzaghi (1950), has been used as a basis to describe the anticipated behaviour of the ground. No account is taken in the given classifications of the supporting pressure provided to the face by tunneling equipment and fluids or to the response of the ground to support or modifications that are selected and implemented by the Contractor (e.g., dewatering, shoring, tunneling systems, etc.); the intent of using the Engineering Classes is to describe the behaviour of the material if exposed during excavation and tunneling without provision of support or ground modifications.

Table 9: Ground Behaviour Classification

Classification and Descriptive Terms	Sub-Classification	Behaviour
Firm		Excavation face(s) can be cut without initial support
Ravel, Raveling	Slow raveling	Chunks or flakes of material begin to drop out of the excavation face(s) sometime after the ground has been exposed, due to loosening, overstress, fissures, and "brittle" fracture (ground separates or breaks along distinct surfaces, as opposed to squeezing ground). In fast raveling ground, the process starts within a few minutes; otherwise the ground is slow raveling.
	Fast raveling	
Squeeze, Squeezing		Ground squeezes or extrudes plastically from excavation face(s) without visible fracturing or loss of continuity, without perceptible increase in water content, and exhibits ductile plastic yield and flow.
Run, Running	Cohesive-running	Apparent cohesion in moist sand, silt, or mixtures of these, or weak cementation in any non-cohesive soil, allows the material to stand for a brief period of raveling, before it breaks down and degrades to running or flowing behaviour.
	Running	Dry non-cohesive materials without cohesion are unstable at a slope greater than their angle of repose (approximately 30 to 35 degrees). When exposed at steeper slopes, the soils run like granulated sugar or dune sand until the slope flattens to the angle of repose. Soil exhibiting such behaviour is running.
Flow, Flowing		A mixture of soil and water flows from excavation face(s) like a viscous fluid. The material can flow for great distances, completely filling excavations or tunnels in some cases.

In granular soils, face stability is commonly assessed using groundwater conditions, soil gradation, variability in gradation and in situ density. The “fines content” (combined silt and clay-size fraction of soil) for the Class A through D soils is shown on the Baseline Grain Size Distribution Figures 1, 2, 3, 5 and 7. While the fines content is conventionally useful for assisting with interpretation of soil behaviour, in the Greater Toronto Area granular soils can commonly include a significant “fines” content and yet also run, ravel or flow (depending on water content) contrary to conventional interpretations of likely behaviour because the “fines” can consist primarily of relatively uniformly graded silt. Therefore, the baseline behaviour descriptions and classifications provided in this report have been developed specifically for this project.

Excavation through the Glacial Till (Class C) and Residual Soils (Class D) will also encounter water-bearing granular layers that will flow upon initial exposure where these are below the baseline groundwater level. Excavation difficulties such as lumping, balling and sticking to equipment are to be expected where zones/lenses with higher silt and clay contents are encountered within the Glacial Till (Class C) and Residual Soils (Class D).

7.0 CLOSURE

This Subsurface Conditions Baseline Report was prepared by Golder Associates Ltd., with input and consultation by the project designer, AECOM, on behalf of the Ministry of Transportation, for the proposed realignment of the sanitary sewer located under the QEW from North Service Road, between Westfield Drive and Insley Road, to South Service Road, west of Odgen Avenue, in Mississauga, Ontario. It is intended for use by bidders of G.W.P. 2102-13-00.

Golder Associates Ltd.



Kim Macdonald, P.Eng.
Geotechnical Engineer



William (Bill) Cavers, P.Eng.
MTO Foundations Designated Contact



KM/WBC/hdw

Golder and the G logo are trademarks of Golder Associates Corporation

[https://golderassociates.sharepoint.com/sites/19542g/1 foundations/09 - reports/20 - scbr contract 2 trenchless crossings/2. stanfield rd/final/1530382-r-scbr qew stanfield sanitary sewer crossing final - dec 2021.docx](https://golderassociates.sharepoint.com/sites/19542g/1%20foundations/09%20-%20reports/20%20-%20scbr%20contract%202%20trenchless%20crossings/2.%20stanfield%20rd/final/1530382-r-scbr%20qew%20stanfield%20sanitary%20sewer%20crossing%20final%20-%20dec%202021.docx)

REFERENCES

- ASCE (2007). *Geotechnical Baseline Reports for Construction: Suggested Guidelines*. The Technical Committee on Geotechnical Reports of the Underground Technology Research Council, R.J. Essex, chairman, ASCE, Reston, VA, 62 pp.
- Boone, S.J., Westland, J., Busbridge, J.R., and Garrod, B. (1998). "Prediction of Boulder Obstructions" in *Tunnels and Metropolises, Proceedings of World Tunnel Congress 1998*, Sao Paulo, Brazil, A. Negro and A. Ferreira, editors, Balkema, Rotterdam, pp. 817-822.
- Brennand, T. A. "Urban Geology of Toronto and Surrounding Area" in *Urban Geology of Canadian Cities*. GAC Special Paper 42, pp.323-352. Karrow, P.F., and White O.L., Editors, Geological Association of Canada Special Paper 42, Geological Association of Canada, Newfoundland, 1998.
- Canadian Geotechnical Society (2006). *Canadian Foundation Engineering Manual*, 4th Edition. The Canadian Geotechnical Society c/o BiTech Publishers Ltd. Richmond, British Columbia.
- Chapman, L. J., and Putnam, D.F., 1984. *The Physiography of Southern Ontario*, 3rd Edition. Ontario Geological Survey, Special Volume 2. Ontario Ministry of Natural Resources.
- Golder Associates Ltd. (2018). *Foundation Investigation and Design Report, Sanitary Sewer Relocation, QEW Widening from East of Cawthra Road to the East Mall, Cities of Mississauga and Etobicoke, Ministry of Transportation, Ontario, GWP 2102-13-00&2432-13-00*. GEOCRE No. 30M15-132, dated April 16, 2018.
- Heuer, R. E. (1974). "Important Ground Parameters in Soft Ground Tunneling." *Proceedings Specialty Conference on subsurface Explorations for Underground Excavations and Heavy Construction*, ASCE, Reston, VA., p.152-167.
- Kulhawy, F.H. and P.W. Mayne. (1990). *Manual on Estimating Soil Properties for Foundation Design*. Report EPRI-EL6800. Palo Alto, CA, Electric Power Research Institute
- Ministry of the Environment Ontario (2005). Water Well Information System Version 2.01. *Hydrogeology of Southern Ontario*, Second Edition. http://www.ene.gov.on.ca/envision/techdocs/4800e_index.htm
- Poot, S., Boone, S.J., Westland, J., and Pennington, B. (2000). "Predicted Boulder Frequency Compared to Field Observations During Construction", *Proceedings of the 50th Canadian Geotechnical Conference*, Montreal, pp. 47-54.

Tables

TABLE A – DESCRIPTION OF ENGINEERING SOIL CLASSES

Engineering Soil Class	Colour Code	Soil Type Description ¹	Description of Engineering Class ²	Major Deposits	Behaviour of Engineering Classes
A		<ul style="list-style-type: none"> Silty Sand Fill Sand and Gravel Fill 	<ul style="list-style-type: none"> Near-surface materials placed by man-made processes, with random and broad compositions Fill can include natural and man-made materials related to highway embankment construction, containing varying fractions of gravel silt, sand and clay, along with organic material and other debris. 	Fill	<ul style="list-style-type: none"> Above groundwater levels, these materials would be classified as cohesive running. Below groundwater levels, these materials would be classified as flowing. Groundwater flows from and within coarser layers will decrease following exposure. Rapid support of these materials and groundwater control are required to control the behaviour of these materials. Sand and gravel components of material are abrasive.
B		<ul style="list-style-type: none"> Silt Sandy Silt Silty Sand Sand 	<ul style="list-style-type: none"> Uniformly and poorly graded silty sand, sand, and clayey sand – silty sand containing trace to some clay. Non-plastic. 	Native Granular Deposit	<ul style="list-style-type: none"> Above groundwater levels, slow raveling to fast raveling upon drying. Below groundwater levels, these materials fast raveling to flowing. Rapid support of these materials and groundwater control are required to control the behaviour of these materials. Sand and gravel components of material are abrasive.

Engineering Soil Class	Colour Code	Soil Type Description ¹	Description of Engineering Class ²	Major Deposits	Behaviour of Engineering Classes
C		<ul style="list-style-type: none"> Clayey Silt 	<ul style="list-style-type: none"> Broadly-graded, low plasticity clayey silt, containing trace sand and trace gravel. 	Native Cohesive Deposit	<ul style="list-style-type: none"> Below groundwater levels, these materials would be classified as squeezing. Material behaviour in exposed areas will be sensitive to variation in water content and construction traffic.
D		<ul style="list-style-type: none"> Sandy Clayey Silt Glacial Till 	<ul style="list-style-type: none"> Broadly-graded, low plasticity sandy clayey silt, containing trace gravel. Above groundwater levels, the glacial till is anticipated to be fissured from various weathering processes and have a “blocky” structure when exposed. The material varies in permeability and contains fissures Cobbles and boulders are expected within these soils. 	Glacial Till	<ul style="list-style-type: none"> Above groundwater levels, firm to slow raveling Below groundwater levels, firm to slow raveling. Material behaviour in exposed areas will be sensitive to variation in water content and construction traffic. Sand and gravel components are abrasive.
E		<ul style="list-style-type: none"> Clayey Silt (Residual Soils) 	<ul style="list-style-type: none"> Broadly-graded, low plasticity clayey silt, containing gravel and shale rock fragments. The material varies in permeability and contains shale fragments from sand to boulder-size. Cobbles and boulders are expected within these soils. 	Residual Soils	<ul style="list-style-type: none"> Above groundwater levels, firm to slow raveling Below groundwater levels, firm to slow raveling. Material behaviour in exposed areas will be sensitive to variation in water content and construction traffic. Sand and gravel components are abrasive.

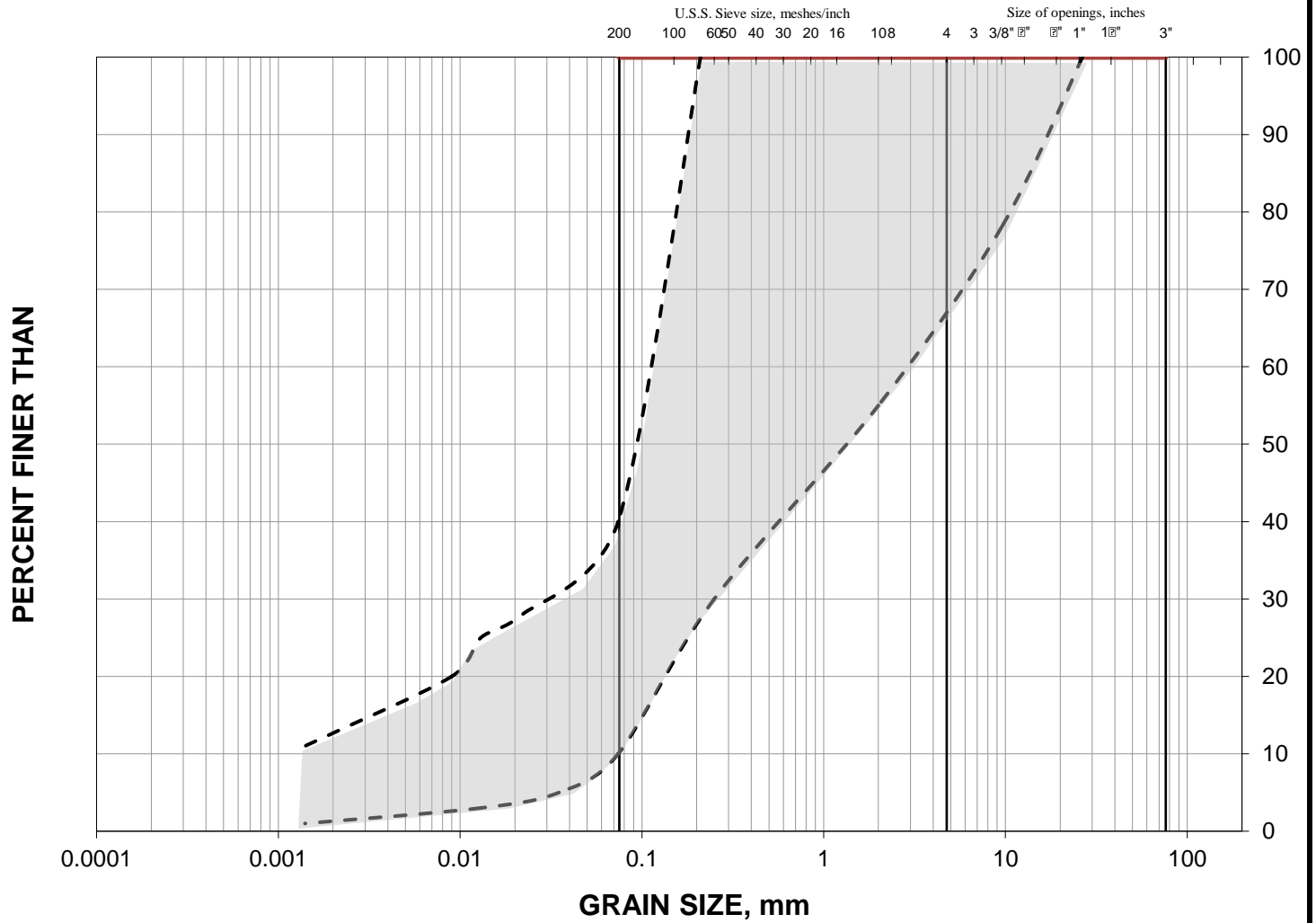
1. Colour shade may vary from those illustrated on the interpreted profiles due to variation in plotting/printer settings.

2. Refer to the Baseline Engineering Characteristics of the Soils section in the Subsurface Condition Baseline Report for further details on the soil type.

Figures

**Baseline Grain Size Distribution
Fill
(Class A)**

FIGURE 1



SILT AND CLAY SIZES		FINE			MEDIUM			COARSE			FINE			COARSE			COBBLE SIZE
FINE GRAINED		SAND SIZE						GRAVEL SIZE									

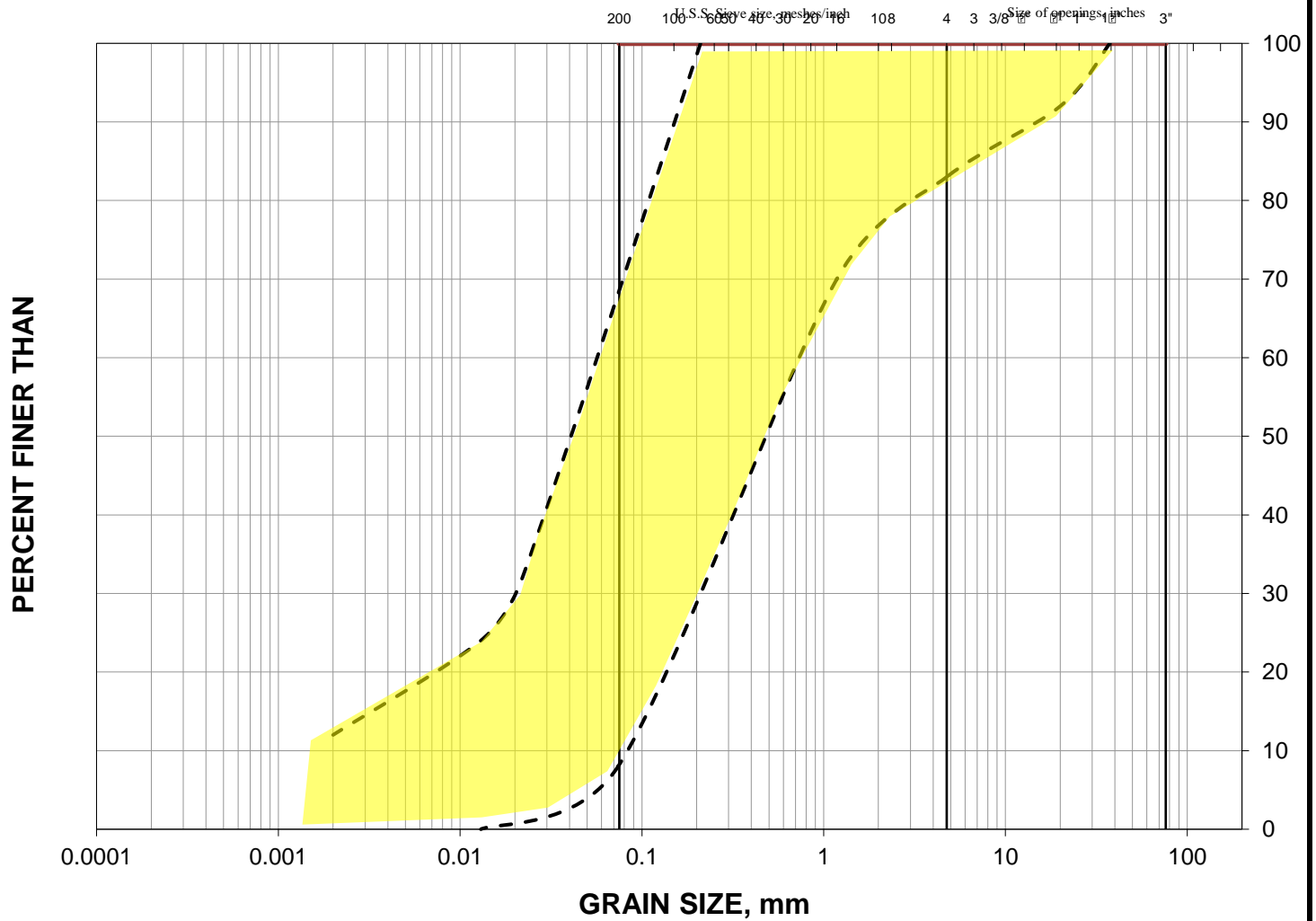
Date: July, 2021
Project: 1530382

Golder Associates

Drawn: KN
Checked: WC

**Baseline Grain Size Distribution
Native Granular Deposits
(Class B)**

FIGURE 2



SILT AND CLAY SIZES							COBBLE SIZE
FINE GRAINED		FINE	MEDIUM	COARSE	FINE	COARSE	
		SAND SIZE			GRAVEL SIZE		

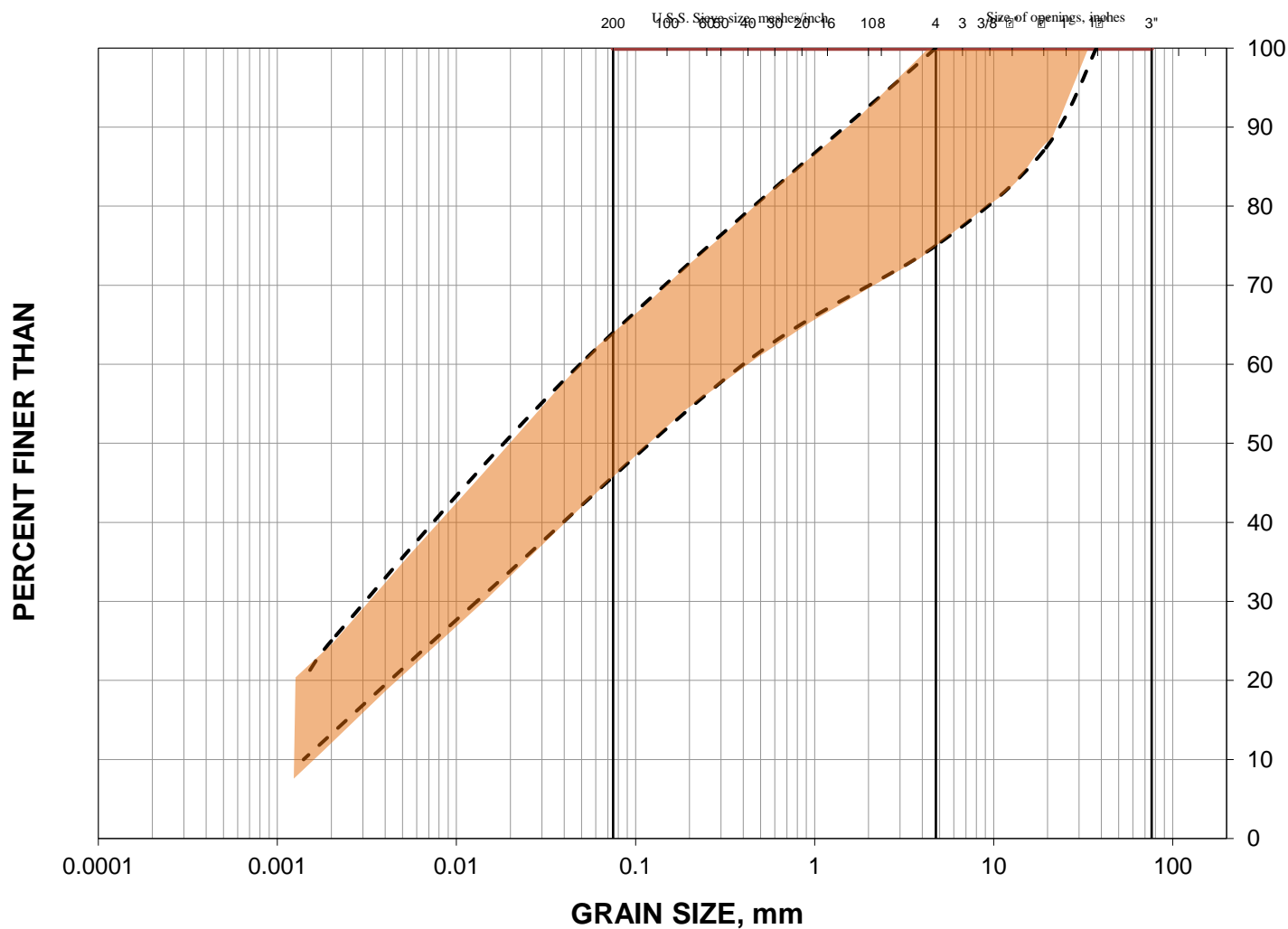
Date: July, 2021
Project: 1530382

Golder Associates

Drawn: KN
Checked: WC

**Baseline Grain Size Distribution
Glacial Till
(Class C)**

FIGURE 3



SILT AND CLAY SIZES			FINE			MEDIUM			COARSE			FINE			COARSE			COBBLE SIZE
FINE GRAINED			SAND SIZE			GRAVEL SIZE												

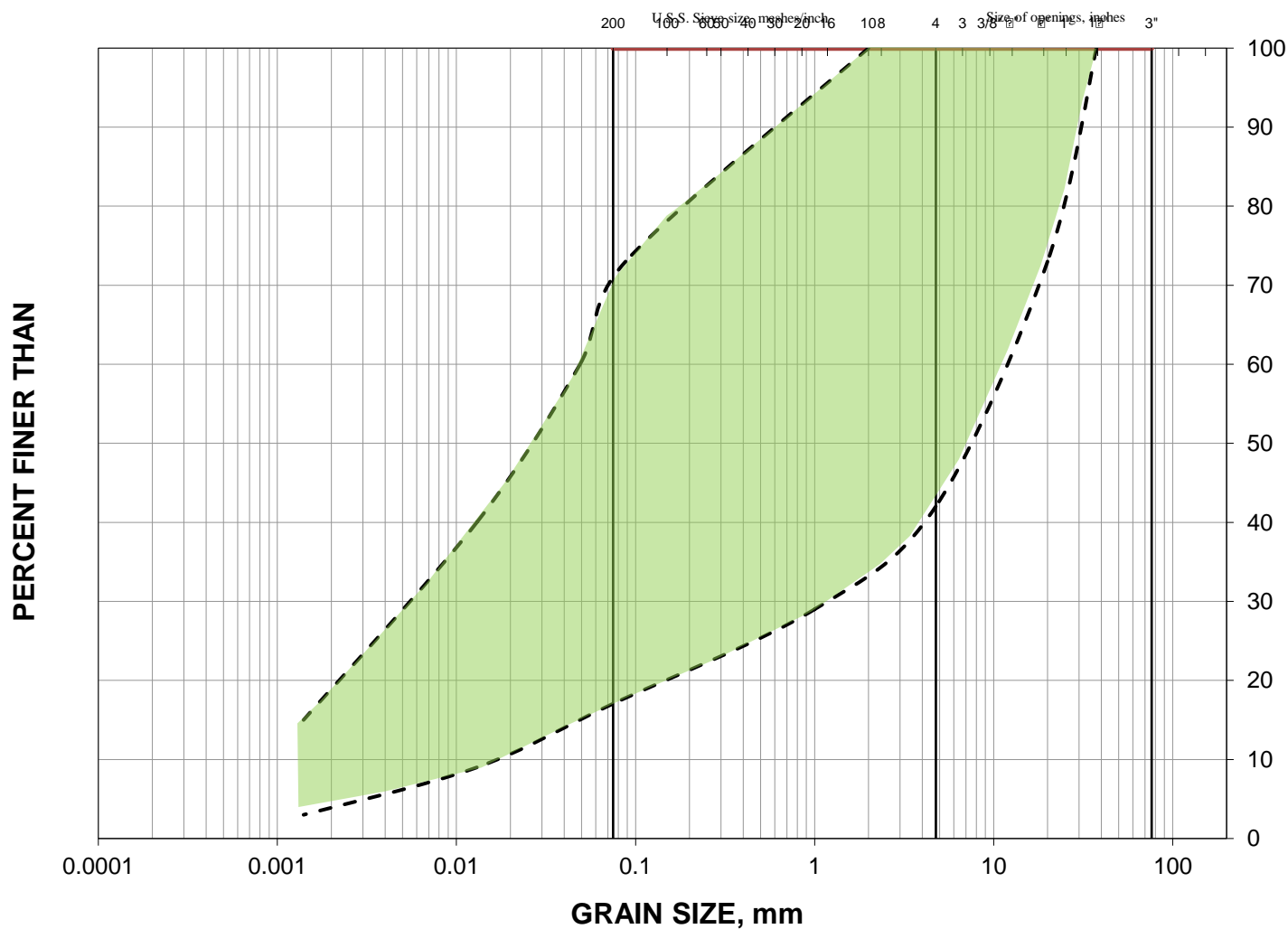
Date: July, 2021
Project: 1530382

Golder Associates

Drawn: KN
Checked: WC

**Baseline Grain Size Distribution
Residual Soil
(Class D)**

FIGURE 5

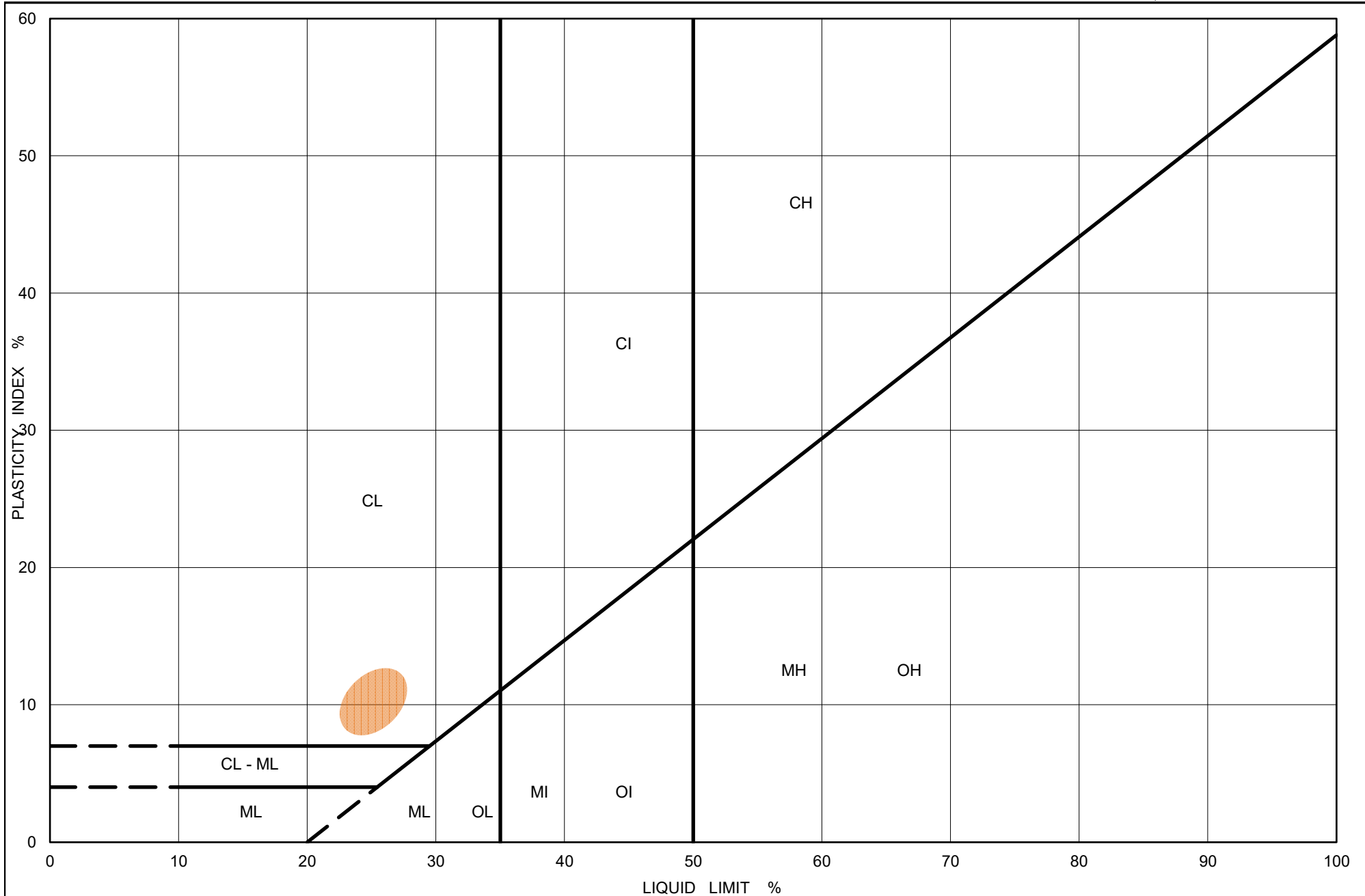


SILT AND CLAY SIZES							COBBLE SIZE
FINE GRAINED		FINE	MEDIUM	COARSE	FINE	COARSE	
		SAND SIZE			GRAVEL SIZE		

Date: July, 2021
Project: 1530382

Golder Associates

Drawn: KN
Checked: WC



Ministry of Transportation

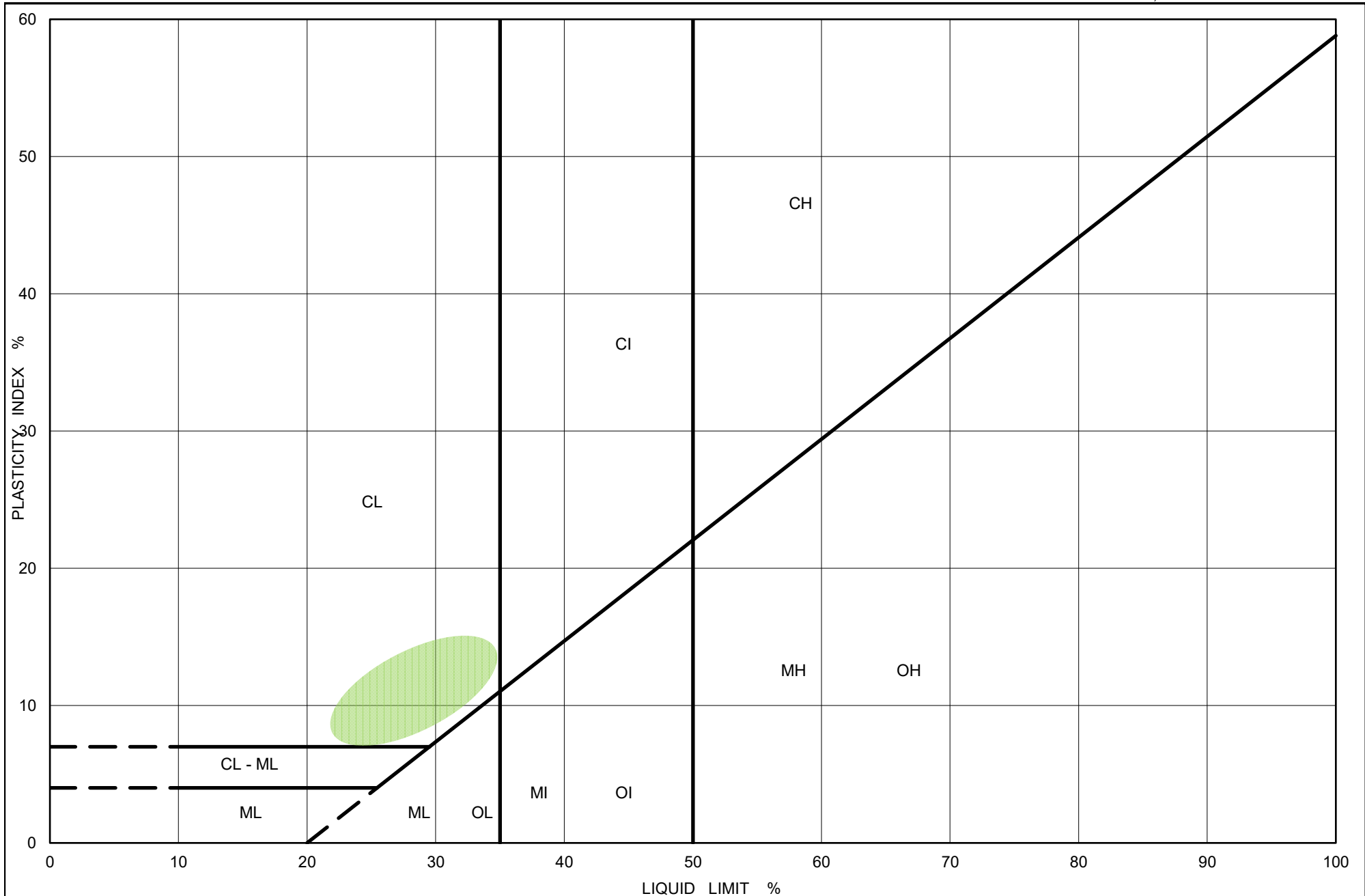
Ontario

PLASTICITY CHART Glacial Till (Class C)

Figure No. 4

Project No. 1530382/7000

Checked By: KNN



Ministry of Transportation

Ontario

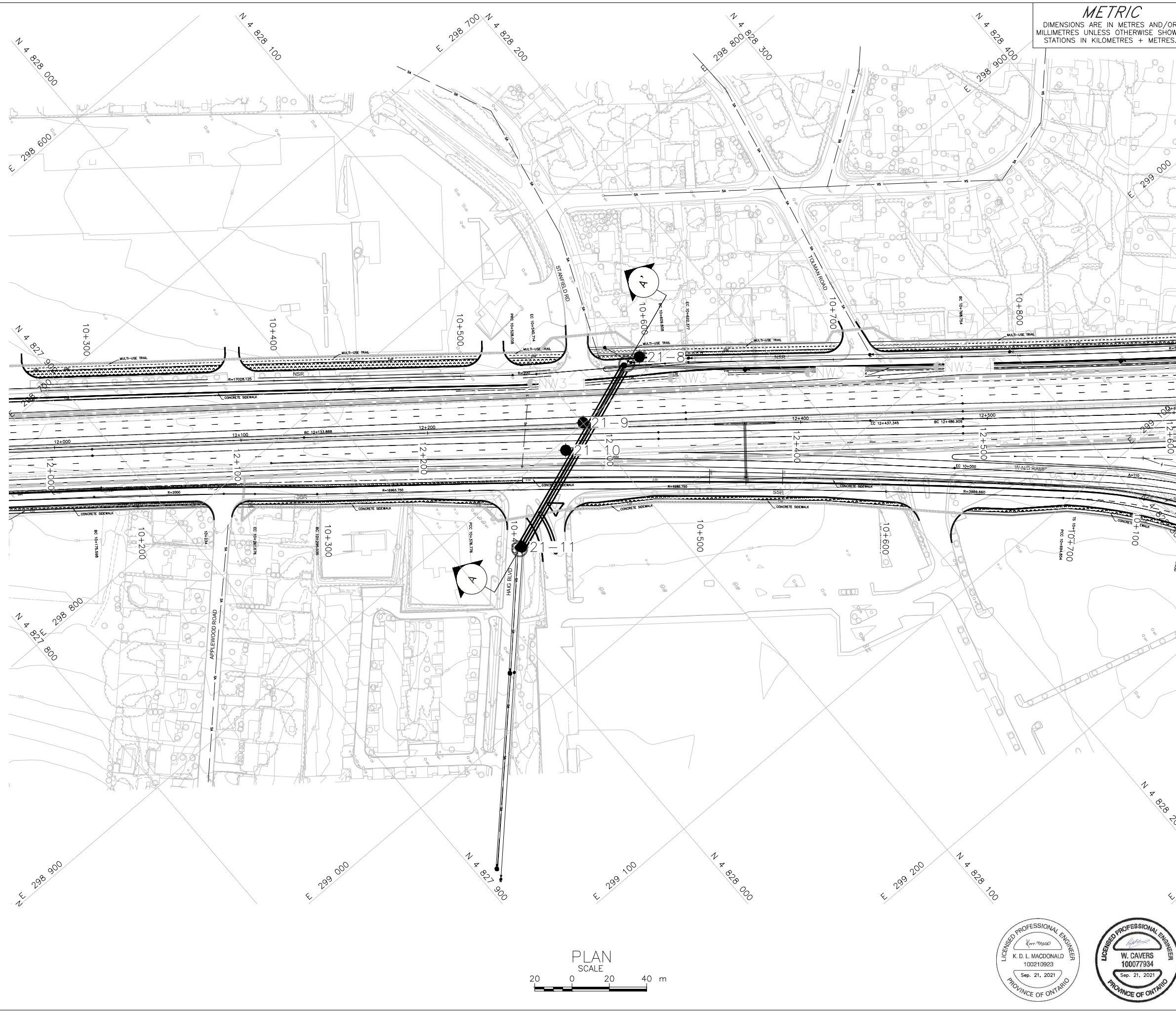
PLASTICITY CHART Residual Soil (Class D)

Figure No. 6

Project No. 1530382/7000

Checked By: KNN

Drawings



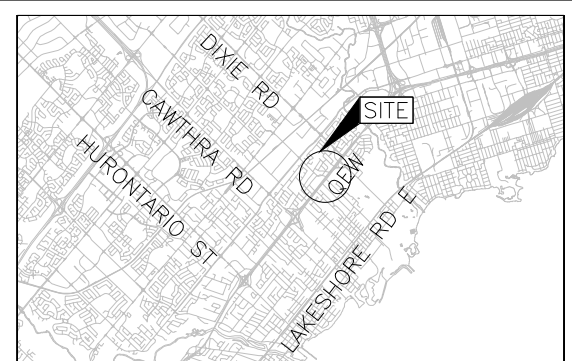
METRIC
DIMENSIONS ARE IN METRES AND/OR
MILLIMETRES UNLESS OTHERWISE SHOWN
STATIONS IN KILOMETRES + METRES

CONT No. 2021-2127
GWP No. 2102-13-00



QEW-CAWTHRA TO EAST MALL WIDENING
TRENCHLESS SANITARY CROSSING EAST OF STANFIELD ROAD

BOREHOLE LOCATIONS





KEY PLAN
SCALE



2 0 2 4 km

LEGEND

-  Borehole – Current Investigation
 Borehole – Previous Investigation

BOREHOLE CO-ORDINATES			
No.	ELEVATION	NORTHING	EASTING
NW3-4	105.0	4828264.1	299000.0
NW3-3	105.4	4828209.8	298957.6
NW3-2	105.5	4828152.0	298912.2
NW3-1	105.5	4828093.0	298865.6
21-11	104.7	4828031.9	298928.7
21-10	105.6	4828083.5	298904.6
21-9	105.9	4828100.2	298899.4
21-8	105.4	4828146.0	298892.2

NOTES

This drawing is for subsurface information only. The proposed structure details/works are shown for illustration purposes only and may not be consistent with the final design configuration as shown elsewhere in the Contracts Documents.

The boundaries between soil strata have been established only at borehole locations. Between boreholes the boundaries are assumed from geological evidence.

REFERENCE

Retaining walls plans provided in digital format by AECOM, drawing file nos. 04_RetainingWall_New24-887W.dwg and 07_RetainingWall_NewPortion24-888W.dwg, received January 18, 2018, R.Wall New 24-88XW .dwg, received April 19, 2018.

Sanitary sewer plan provided in digital format by AECOM, drawing file no. QEW_DixielC_Utl_PROP_SANITARY.dwg, received March 16, 2021.

Base plans provided in digital format by AECOM, drawing file nos. QEW_DixielC_base.dwg and QEW_DixielC_plan.dwg, dated July 20, 2016, received Dec. 06, 2016.

Design plans provided in digital format by AECOM, drawing file nos. QEW_Dixie_Cont1_plan.dwg and QEW_Dixie_Cont2_plan.dwg, received July 21, 2017.

Existing ground contours provided in digital format by AECOM, drawing file no. QEW_DixielC_Contours3D.dwg, received Nov. 08, 2016, contour interval 0.5 m.

Key plan base data – MNRF LIO, obtained 2015.

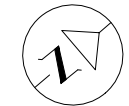
NO.		DATE		BY		REVISION	
Geocres No. 30M11-318							
HWY. QEW				PROJECT NO. 1530382		DIST. Central	
SUBM'D. KN		CHKD. KN		DATE: 12/16/2021		SITE: .	
DRAWN: DD/SA		CHKD. WC		APPD. WC		DWG. 1	

METRIC
DIMENSIONS ARE IN METRES AND/OR
MILLIMETRES UNLESS OTHERWISE SHOWN.
STATIONS IN KILOMETRES + METRES.

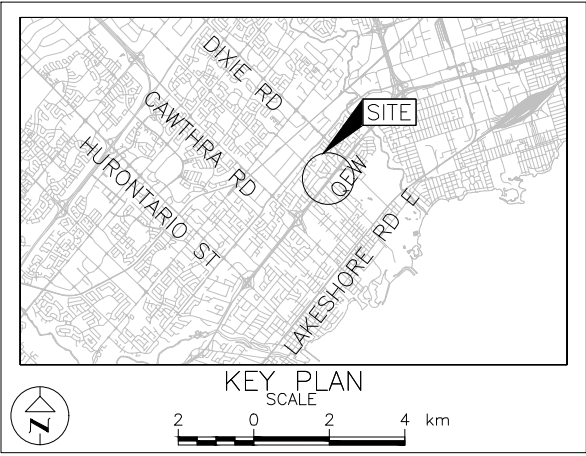
CONT No. 2021-2127
GWP No. 2102-13-00

QEW-CAWTHRA TO EAST MALL WIDENING
TRENCHLESS SANITARY CROSSING EAST OF STANFIELD ROAD

INTERPRETED BASELINE
STRATIGRAPHIC PROFILE



SHEET



LEGEND

- Borehole - Current Investigation
- Borehole - Previous Investigation
- N Standard Penetration Test Value
- 16 Blows/0.3m unless otherwise stated (Std. Pen. Test, 475 j/blow)
- 100% Rock Quality Designation (RQD)
- ≡ WL in piezometer
- ≡ WL upon completion of drilling

BOREHOLE CO-ORDINATES			
No.	ELEVATION	NORTHING	EASTING
NW3-4	105.0	4828264.1	299000.0
NW3-3	105.4	4828209.8	298957.6
NW3-2	105.5	4828152.0	298912.2
NW3-1	105.5	4828093.0	298865.6
21-11	104.7	4828031.9	298928.7
21-10	105.6	4828083.5	298904.6
21-9	105.9	4828100.2	298899.4
21-8	105.4	4828146.0	298892.2

REFERENCE

Retaining walls plans provided in digital format by AECOM, drawing file nos. 04_Retaining Wall_New_24-887W.dwg and 07_Retaining Wall_NewPortion_24-888W.dwg, received January 18, 2018, R.Wall New 24-8XXW.dwg, received April 19, 2018.

Sanitary sewer plan provided in digital format by AECOM, drawing file no. QEW_DixieC_UTL_PROP_SANITARY.dwg, received March 16, 2021.

Base plans provided in digital format by AECOM, drawing file nos. QEW_DixieC_base.dwg and QEW_DixieC_plan.dwg, dated July 20, 2016, received Dec. 06, 2016.

Design plans provided in digital format by AECOM, drawing file nos. QEW_Dixie_Cont1_plan.dwg and QEW_Dixie_Cont2_plan.dwg, received July 21, 2017.

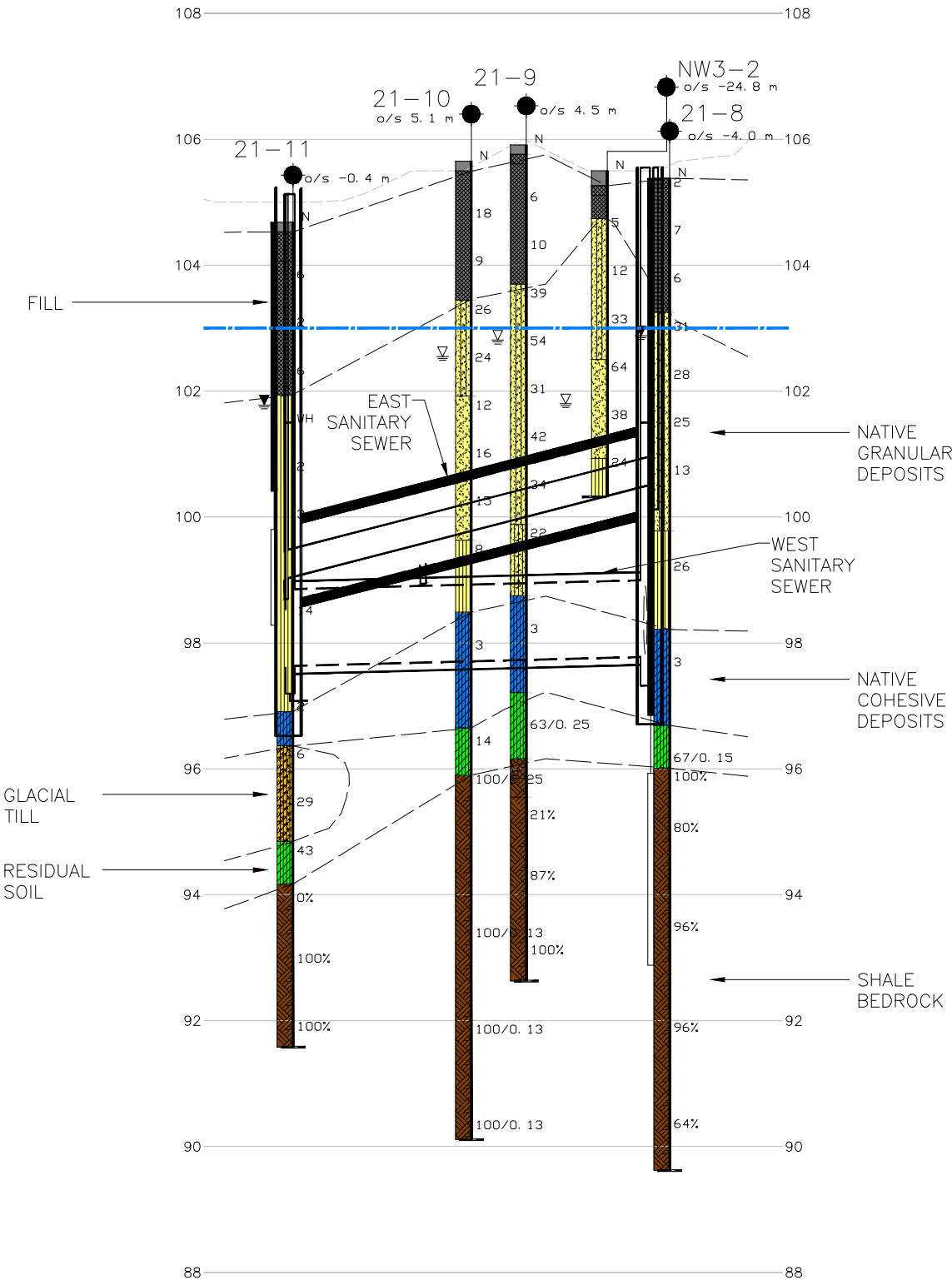
Existing ground contours provided in digital format by AECOM, drawing file no. QEW_DixieC_Contours3D.dwg, received Nov. 08, 2016, contour interval 0.5 m.

Key plan base data - MNRF LIO, obtained 2015.

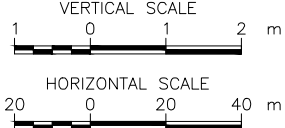
NO.	DATE	BY	REVISION
Geocres No. 30M11-318			
HWY. QEW	PROJECT NO. 1530382		DIST. Central
SUBM'D. KN	CHKD. KN	DATE: 11/25/2021	SITE: .
DRAWN: DD/SA	CHKD. WC	APPD. WC	DWG. 2

LEGEND

Class A	Asphalt
	Fill
Class B	Silt to Sandy Silt to Silty Sand to Sand
Class C	Clayey Silt
Class D	Sandy Clayey Silt (Till)
Class E	Clayey Silt (Residual Soil)
Class F	Shale (Bedrock)
— — —	Baseline Major Soil Deposit or Bedrock Boundary
— — —	Interpreted Piezometric Water Level



PROFILE A-A'



NOTES

This drawing is for subsurface information only. The proposed structure details/works are shown for illustration purposes only and may not be consistent with the final design configuration as shown elsewhere in the Contracts Documents.

The boundaries between soil strata have been established only at borehole locations. Between boreholes the boundaries are assumed from geological evidence.



golder.com